

# WELCOME AT





# **SACRED GROUP OVERVIEW**

1

**80 years** of expertise in elastomer compound and rubber components



The trust of international blue-chip companies : **Stellantis, Renault Nissan, Schneider, Bosch, Nexans,...**



**8 production sites** over **4 continents** to address all its markets everywhere



4 business units: **Auto, Compound industry & soles**



**500+** Employees worldwide



Key values : **Independence, Voluntarism, Commitment, Sustainability & Global/Local balance**

**Sustainability** at the heart of SACRED projects & objectives



2024 Sales Revenues : **67.2M€**



**100+ injection presses & 5 compounds lines** worldwide





Elastomer specialist for both compound and technical parts

- French **leading independent medium-sized company**
- **Technical rubber parts** and **compounds**
- Activity diversity through **4 Business Units** in **8 plants** over **4 continents**
- More than **100 injections molding machines** and **5 compounding lines**
- **Core values: Innovation, quality, and Sustainability** commitments **at the heart of SACRED Culture**

Diversification through 4 Business Units

Sales 2024 : 67.2 M€

	<div></div> <div>AUTOMOTIVE</div> <div>39.3 M€ 58.5%</div>	<div></div> <div>COMPOUND</div> <div>19.6 M€ 29.2%</div>	<div></div> <div>INDUSTRY</div> <div>7.2 M€ 10.7%</div>	<div></div> <div>SOLES</div> <div>1.1 M€ 1.6%</div>
EMEA	24.1 M€	18.5 M€	7.1 M€	1.1 M€
ASIA	3.4 M€		0.1 M€	
NAFTA	11.8 M€	1.1 M€		

International footprint for global presence



Excellence towards Sustainability





France



China



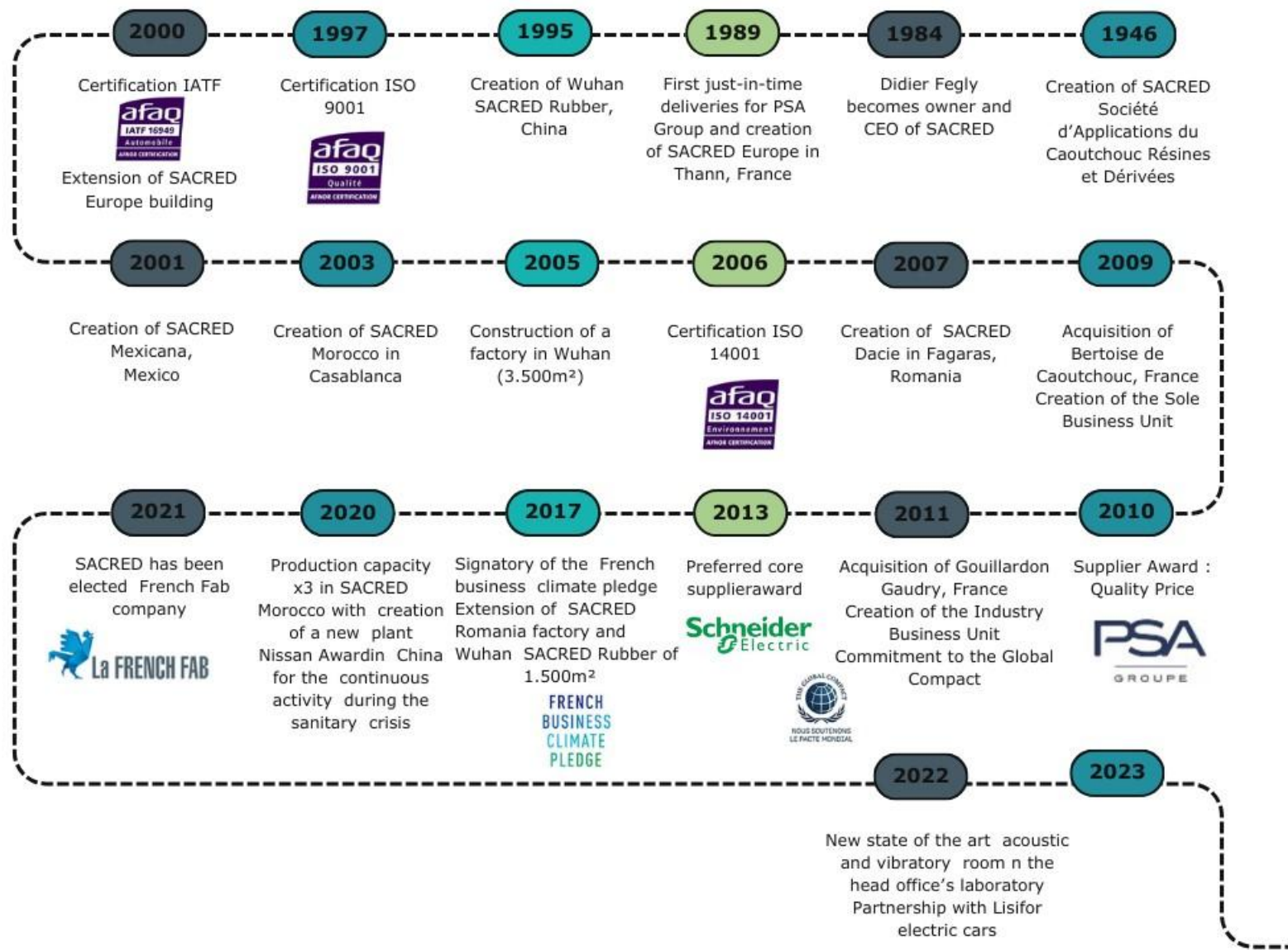
Mexico



Morocco



Romania





# SACRED MEXICANA



2



## Our vision

Be the global reference for elastomer-based solutions in mobility and beyond.

## Our mission

Deliver innovative, sustainable, and high-performance components tailored to the most demanding customer needs.

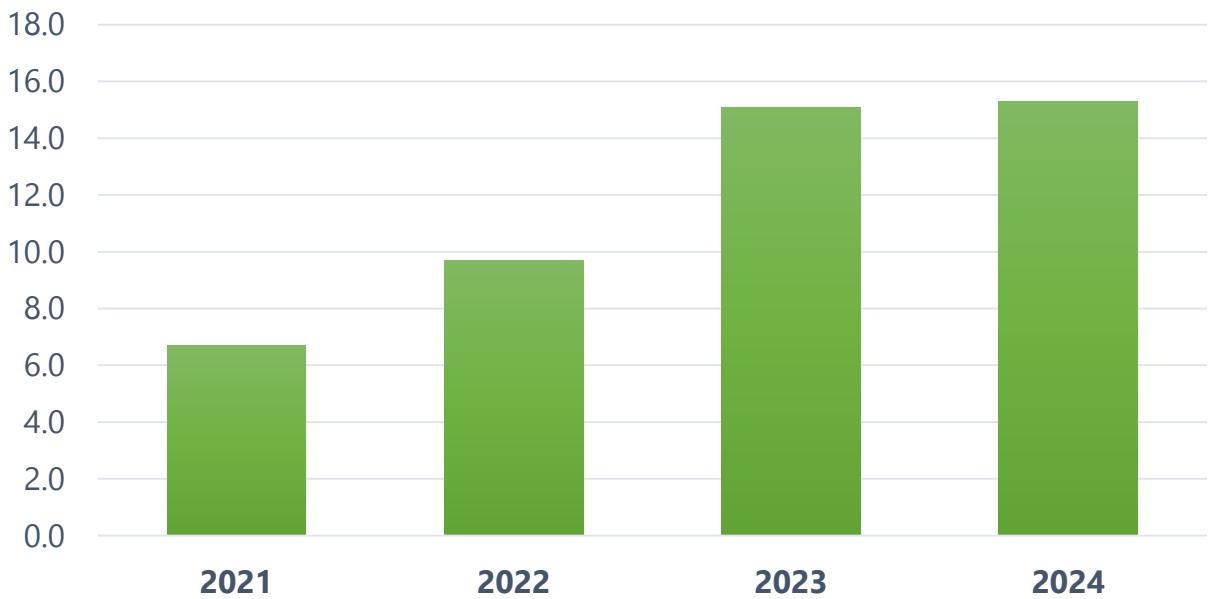
## Our values

Deliver innovative, sustainable, and high-performance components tailored to the most demanding customer needs.

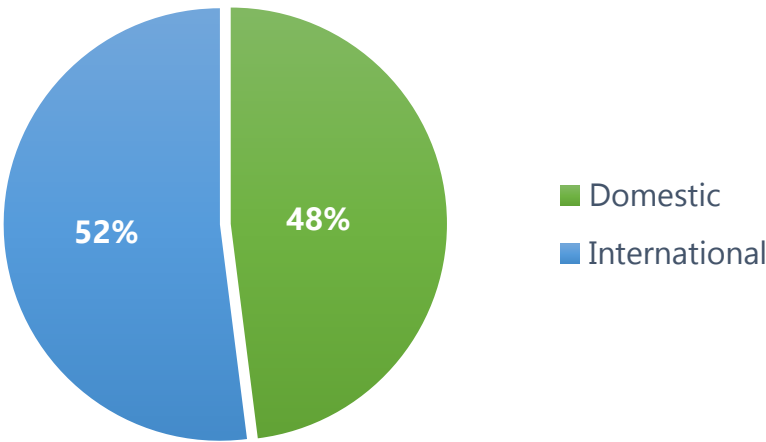




Yearly Sales in M\$



2024 Sales Breakdown



2025 in numbers

- Projected sales: **\$15.5 M**
- Rubber consumption: **600T**
- Employees: **120**
- Building area: **3,500 m²**
- Site area: **11,500 m²**

Privileged plant location





## Elastomer Injection

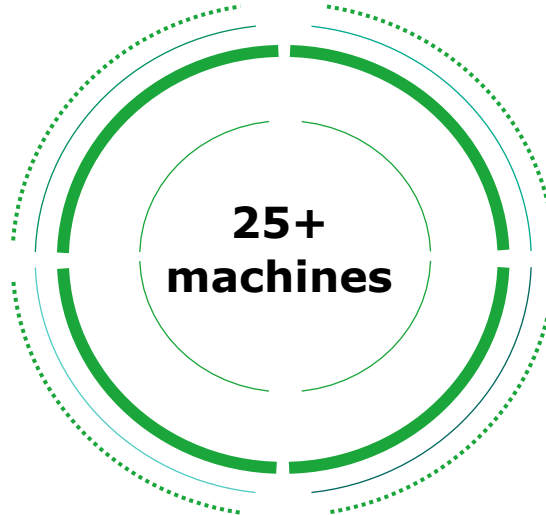


**17**  
Vertical  
presses

## Plastic Injection



**1**  
Horizontal  
press

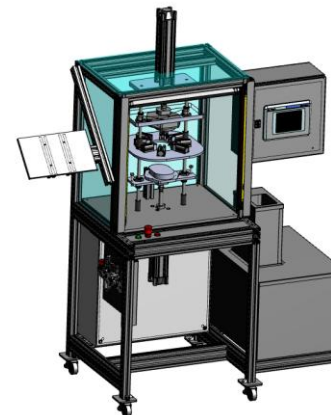


## Rubber mixing



**2**  
Open  
mixers

## Automatic Assembly



**6**  
Assembly  
machines

*\*We can manufacture parts ranging from 10g to over 2kg.*

## Tailored to your needs

We can develop and supply ready-to-use rubber compounds made from all types of elastomers:

- **NR**
- **SBR**
- **BR**
- **IIR**
- **NBR**
- **HNBR**
- **EPDM**
- **CR**
- **CSM**
- **ECO**
- **EVA**
- **AEM**
- **ACM**

With the vulcanization system best suited to your application.





# **EXPERTISE PRODUCTS**

3

## Different functions on the vehicle

SACRED can produce **customized products** to meet the mechanical and architectural specifications and constraints of each customer.

We have the capability to **develop elastomer components** (rubber, silicone, HNBR, etc.) for different types of functions.

## Main customers

**MANN+  
HUMMEL**

**JTEKT**

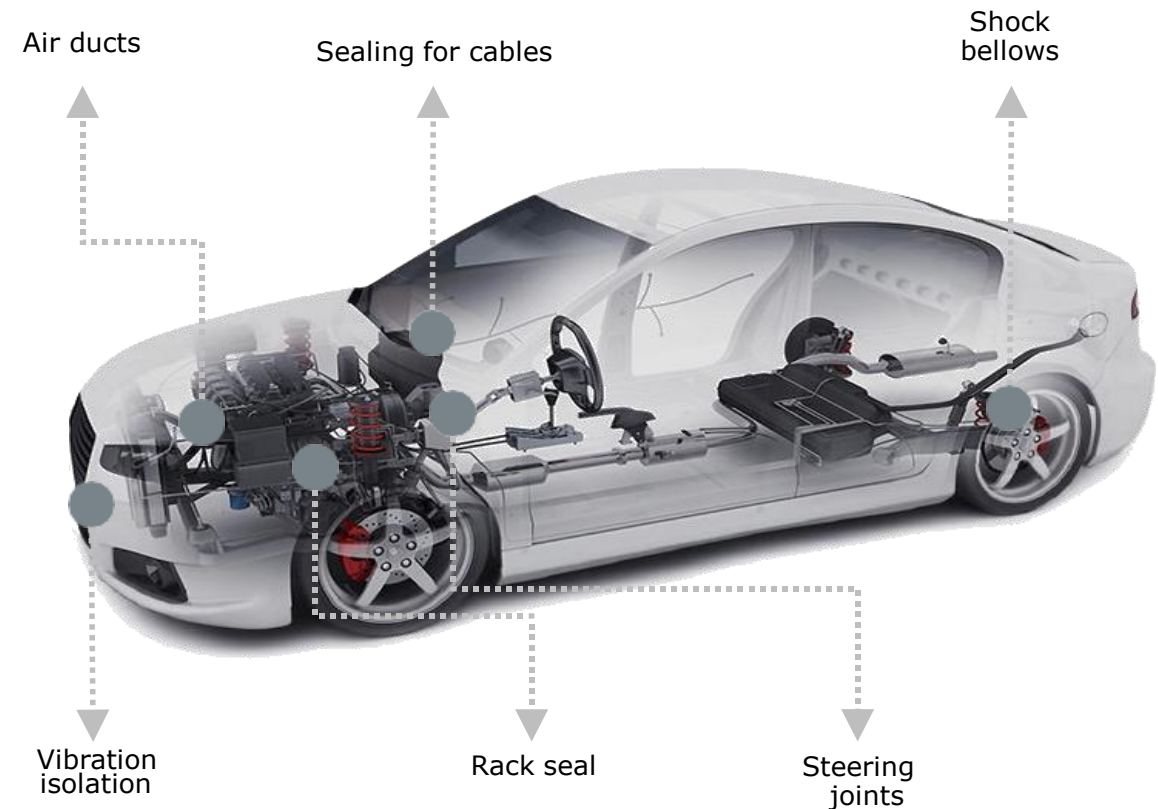
**AKWEL**



thyssenkrupp



**BOSCH**







## Air Ducts

In internal combustion engines, **rubber air ducts** allow **air to flow through the intake system**.

Depending on their position, they direct air:

- Between air intake and air filter
- Between air filter and intake manifold
- Into the turbocharger or supercharger

These parts typically weight **between 80g and over 1kg** and are commonly manufactured using **AEM, EPDM or NBR** compounds.



## Steering Shaft Seals

**Steering column and rack joints** ensure a **reliable seal** between the engine compartment and the cabin.

Key benefits include:

- **Reliable Sealing:** Secure separation between the engine and the cabin.
- **Enhanced Safety:** Protection from engine noise, heat, and fluid exposure.
- **Smooth Operation:** Allows the steering column to move freely despite wheel adjustments or body tolerances.
- **Robust Construction:** Typically made of EPDM combined with plastic elements (either assembled or overmolded)

## Vibration isolation

Vibration isolation components **reduce resonances** generated by vehicle modules. They are engineered to **withstand mechanical stress** and resist external factors like heat, fluids, and road conditions.



## Sealing for cables

**Wiring looms** in vehicles pass through areas which **require them to be protected**. This protection is achieved using different elastomer compounds, depending on the location.



# **DEVELOPMENT & QUALITY**

4



## Multi-disciplinary expertise

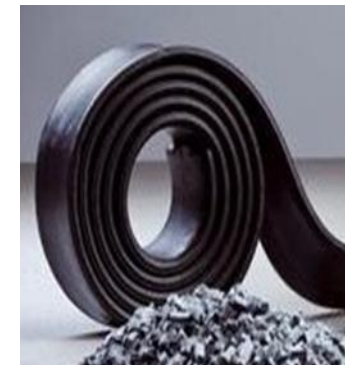
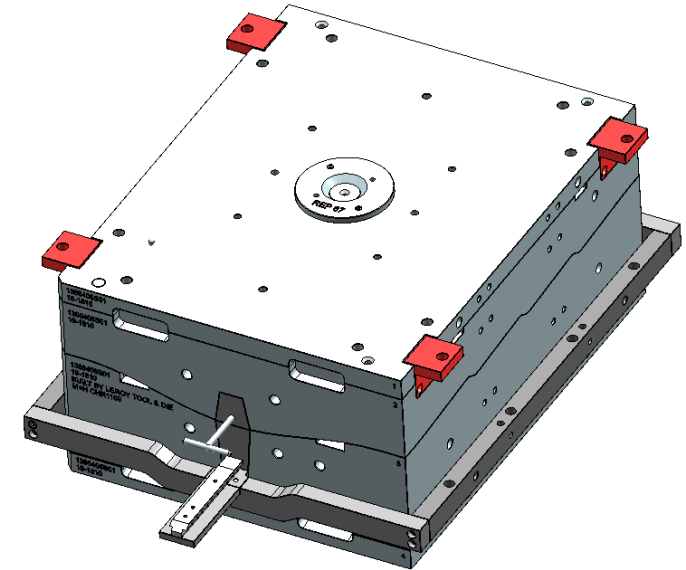
SACRED develops **innovative solutions** tailored to each customer's specifications, while **meeting the highest functional requirements** in acoustics, rotational torque, mounting forces and water-tightness.

This is made possible thanks to our **comprehensive expertise** across the entire development chain:

- Mold design
- Formulation of our own elastomers
- In-house prototype validation
- FEA for digital simulations

## Technical characteristics to be met:

- Elasticity
- Heat resistance
- Abrasion resistance among others

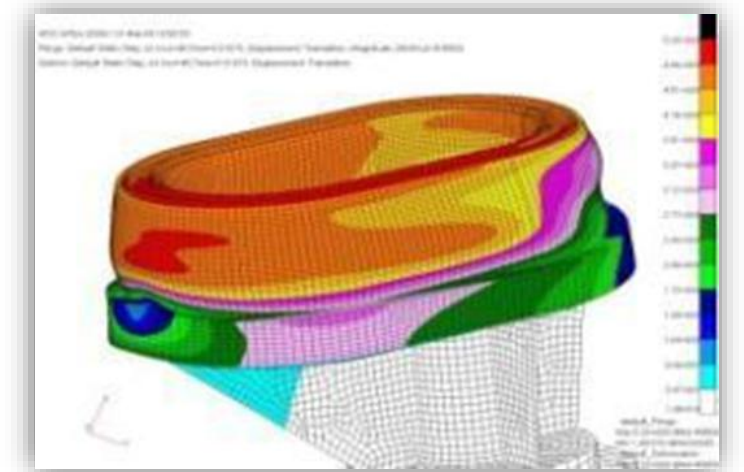
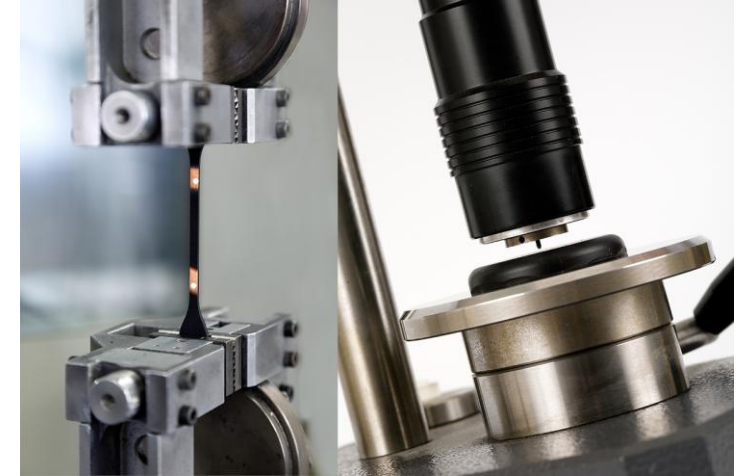


## Parts validation & check

- Dimensional check (Cpk, etc.)
- Functional Test (Specific bench for acoustic, torque, mechanical test, vibration, sealing, ...)

## Tests & measurements

- Rheology
- Moisture content
- Karl Fischer
- Mechanical and chemical properties
- Ageing in high and low temperature
- Fuel and solvent permeability
- Weather resistance
- Ozone





# **WHY CHOOSE SACRED?**

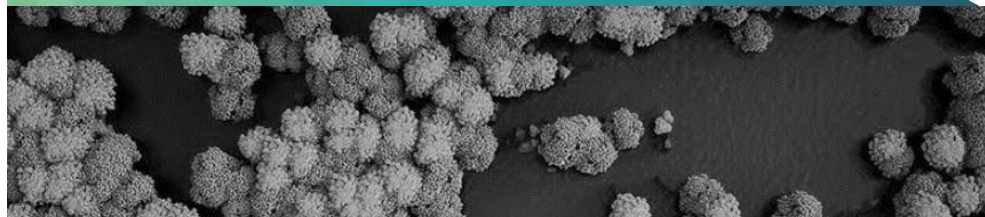
5



**In-house compound formulation and mold design**



**Supplier to leading automotive OEMs and Tier-1 companies**



**01**

**50+ years of expertise in elastomers**

**02**



**03**

**Global footprint with local agility**

**04**



**05**

**Committed to sustainability and innovation**





# CONTACT US

## Address

Av. San Francisco de los Romo Pte 401 - Parque  
Industrial San Francisco de los Romo  
C.P. 20355, San Francisco de los Romo.  
Aguascalientes, Mexico

**Email** [Vmontemayor@sacredgroup.com](mailto:Vmontemayor@sacredgroup.com)

**Phone** +52 (449) 761 9706

[sacredgroup.com](http://sacredgroup.com)



# THANK YOU

