



**Manufacturas Estampadas
S.A. de C.V.**

About us

Founded in 1988 by Belgian Ing. Willy Kerckaert
European-Mexican management

What we offer:

Metal stamping (progressive, semi-progr., transfer)
Process simulations & product development cooperation
Tool & die design and fabrication
Sheet metal fabrications
Tumble-deburr and industrial cleaning
E-coat and powder coating
Welding (MIG, spot, seam – robotic and manual)
Hardware insertions, assembly, tox, tapping,...

Main sectors:

All-Terrain Vehicles
Automotive industry
Lighting industry
Telecom & server technology



bsi.  

Certificate of Registration

QUALITY MANAGEMENT SYSTEM - IATF 16949:2016

This is to certify that: **Manufacturas Estampadas S.A. de C.V.**
Juan Ruiz de Alarcón No, 305
Complejo Industrial Chihuahua
Apartado Postal 1-74, Chihuahua
Chihuahua
CP 31136
Mexico

operates a Quality Management System which complies with the requirements of IATF 16949:2016 for the following scope:

The manufacture of stamped and painted products including progressive dies, secondary operations.

Permitted Exclusions: Product Design

For and on behalf of BSI: 
Carlos Pitango, Chief Operating Officer Assurance – Americas

BSI Certificate Number: 88379
IATF Number: 0440206

Certification Date: 2022-01-06

Page: 1 of 2

...making excellence a habit.™

Latest Issue: 2022-01-06 Expiry Date: 2025-01-05

Main Customers



Diversity of industries management (High-Low volume)
Automotive, recreational vehicles, lighting and electronics.

General Information



- 38 years experience
- 300 employees
- 65 million USD sales (2023)
- 57 million USD sales (2024)
- 63 million USD sales (2025)
- 64 million USD sales (2026 est.)
- 3 plants
(25,000 m2 in total)
- 48 stamping presses
- 4 turrets, 5 press brakes
- 1 laser
- 6 MIG Weld robots.
- 13 spot weld centers
- Tox pressotechnik, tapping and hardware insertion
- Tumble deburr & industrial cleaning
- 2 Paint lines e-coat & powder



Manesa plant 1

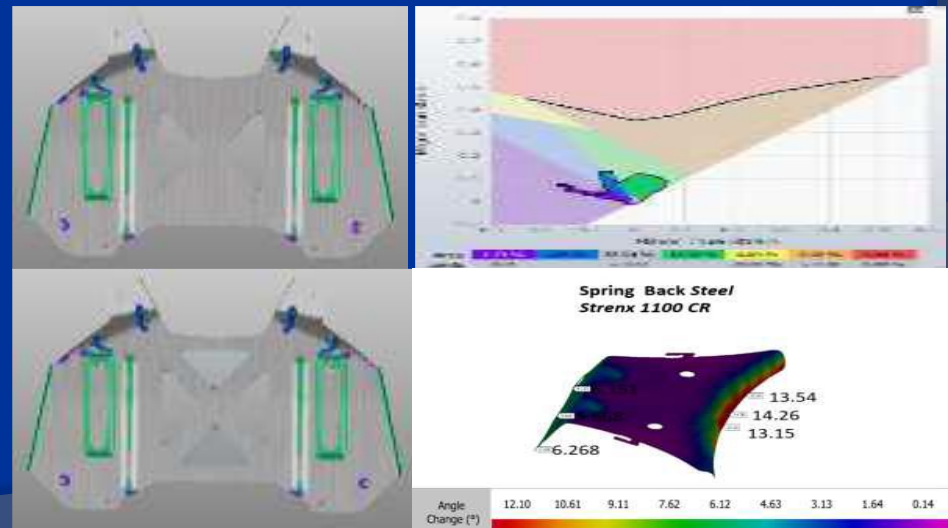


- Started in 1988
- 10,000m²
- Focus on high tons 400T / 600T Progressive and manual die.
- Tool design and process simulations
- Product development in cooperation with customers



TOOL SHOP CAPABILITY

- Design
- Fabrication
- CNCs, W-EDMs
- Transfer existing dies
- Engineering changes
- Preventive maintenance





Tumble-deburr automotive safety parts



Robotic MIG welding (6 units)



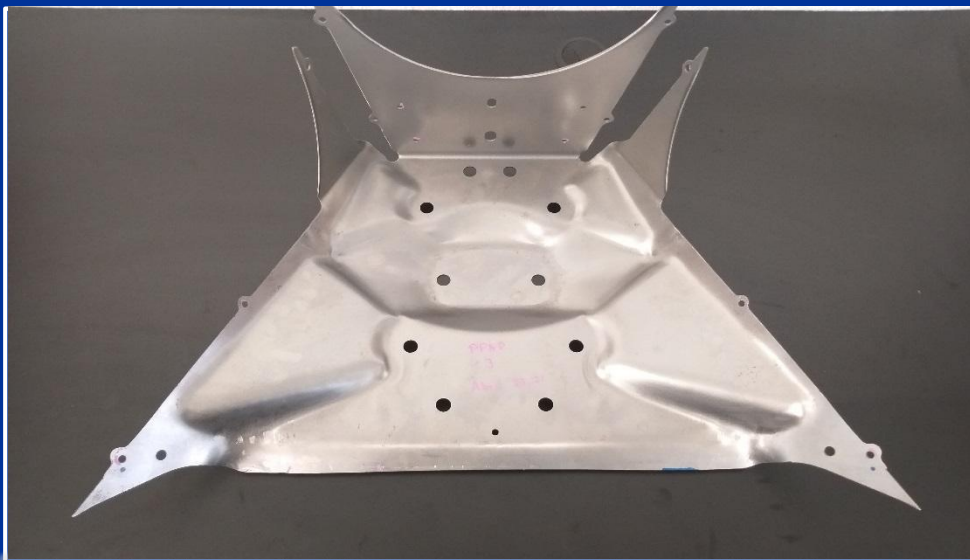
E-coat black and gray
(Ford, GM, Chrysler,...)



Resistance welding
(VW, GM, BRP, Ford,...)



High strength materials, complex forms, assemblies, subassemblies



>60 parts developed with Advanced High Strength Steel - Dual Phase Steel DP980
550 MPa min. yield strength ; 1000 MPa min. ultimate tensile strength

Complex stampings





Complex forming of parts made with HSLAS-F grade 50 steel ASTM A1011





Manesa plant 2

- ◎ Small and medium size stamped parts
- ◎ Started in 2013
- ◎ 7,000m²
- ◎ Stamping presses 100T and 200T



Housings, ballasts, brackets, covers, deep draw cups, heat shields, wiper parts, base plates ; broad variety of metals (CRS, HRS, aluminum, stainless, HSLA, Dual Phase Steel, brass, bronze, copper)

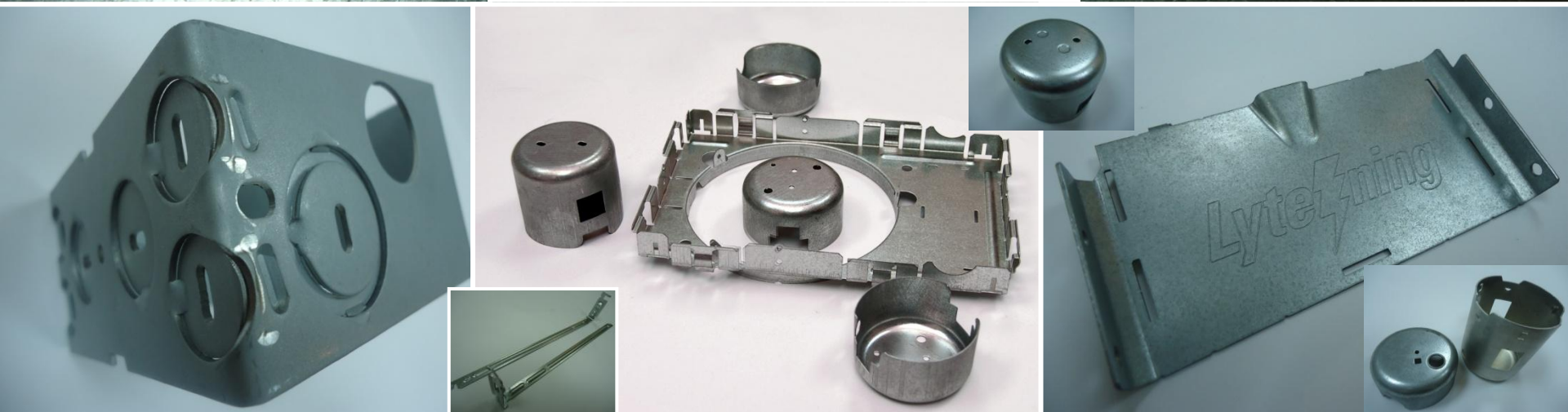
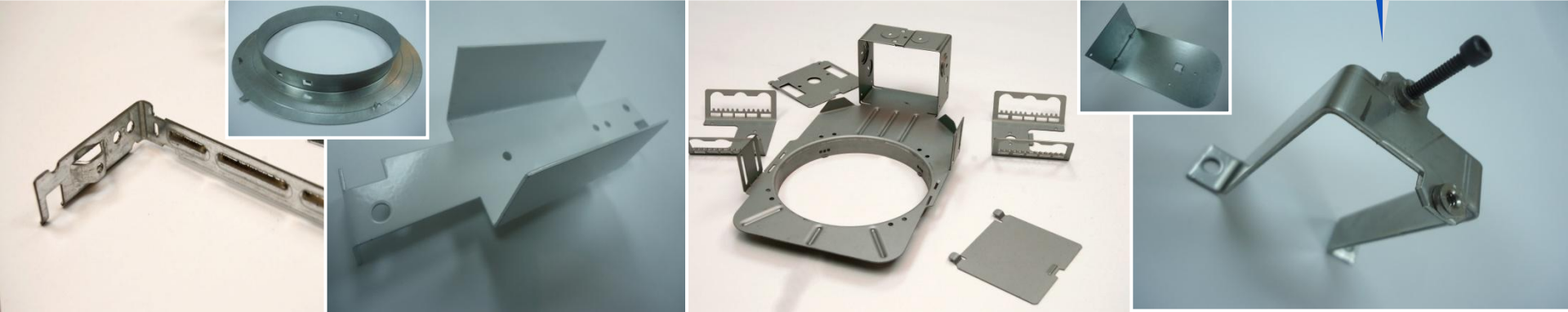
1 high runner
2,000,000 ballasts per month



 **Acuity Brands**TM

signify

> 400 parts



Manesa plant 3



○ Sheet metal fabrications:

Low volume production

- Low cost tool investment
- 4 turret punch presses
- 5 press brakes
- 4 pem serters
- 13 spot weld centers
- Laser cutting (6 kW)
- Short lead times

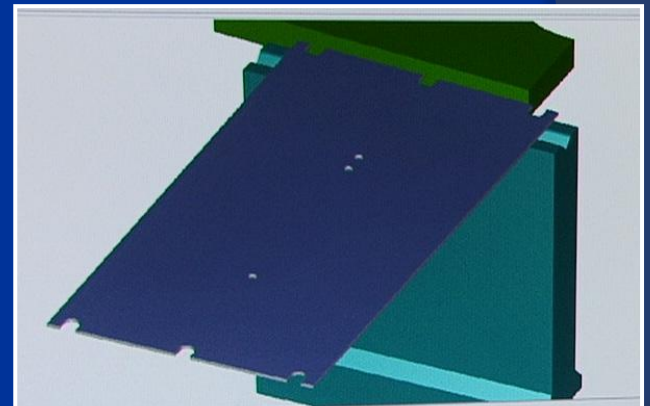
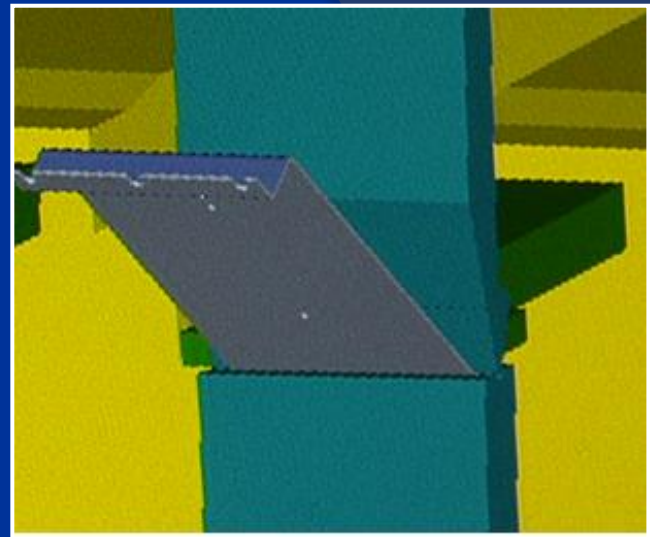
○ 7,000m²

○ Hardware insertion

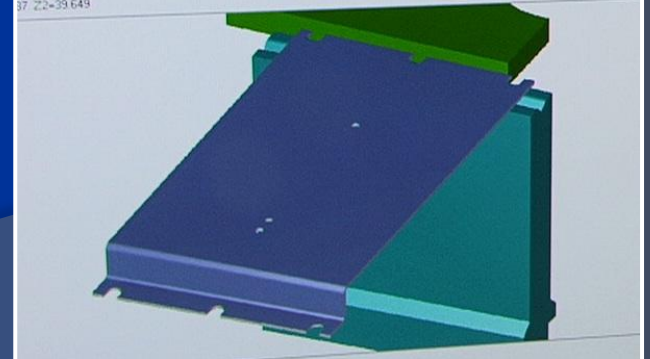
○ Assembly

○ Large area and available capacity for new projects



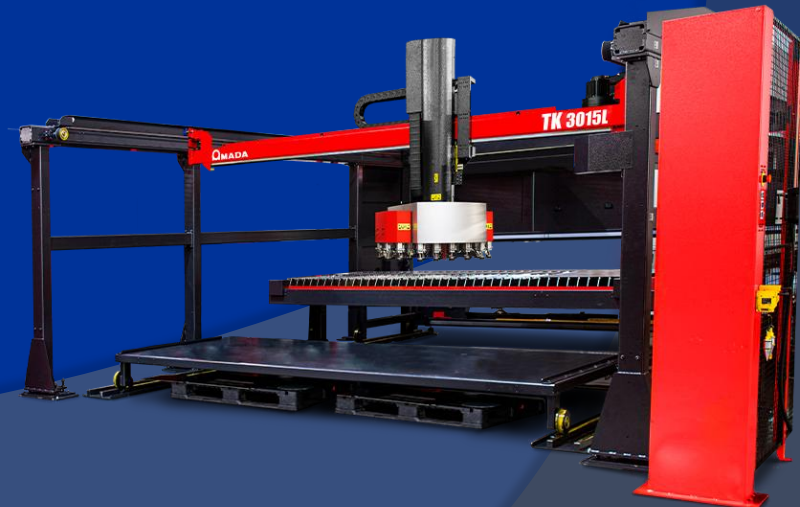
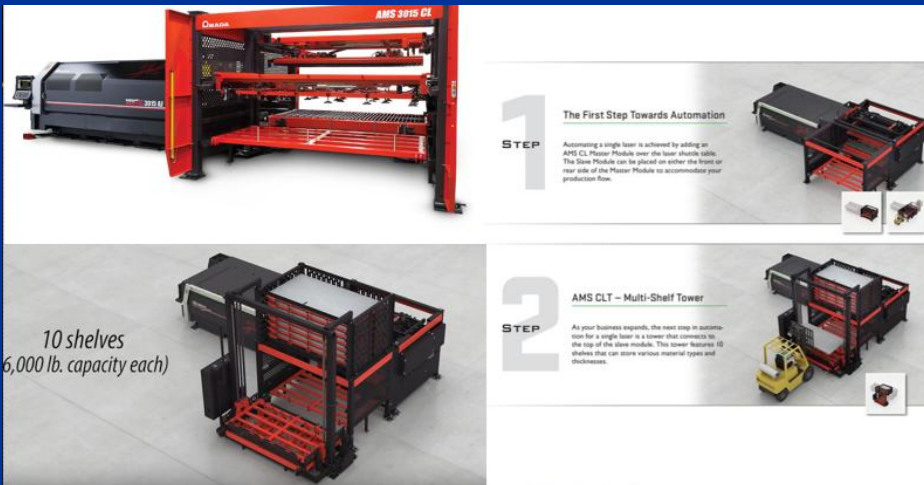


1312
17 21-31.6765
37 22-33.649

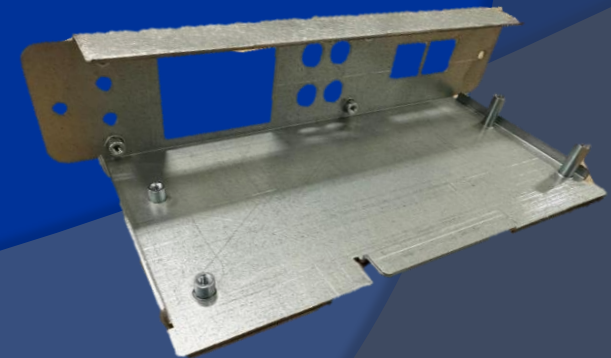
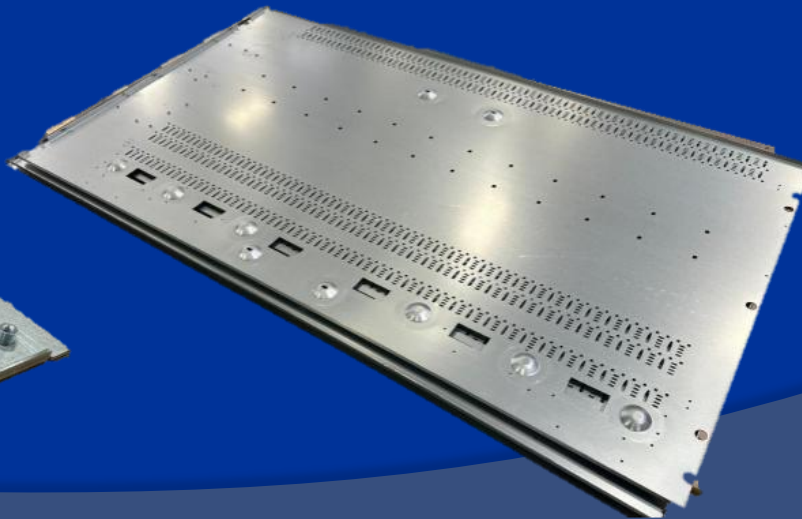
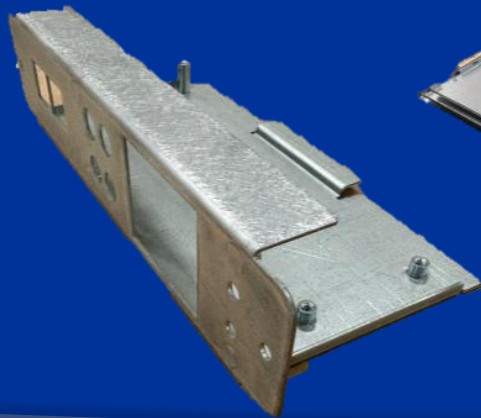
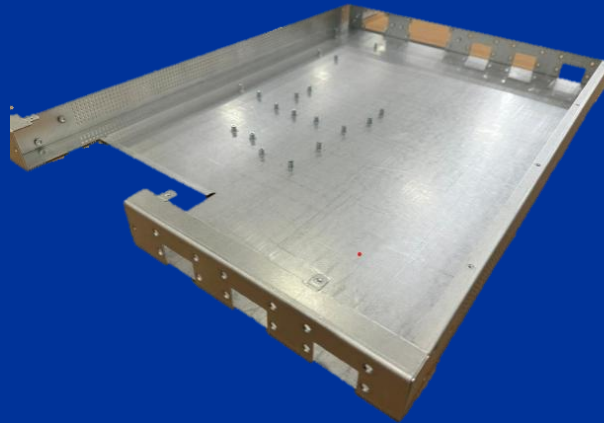
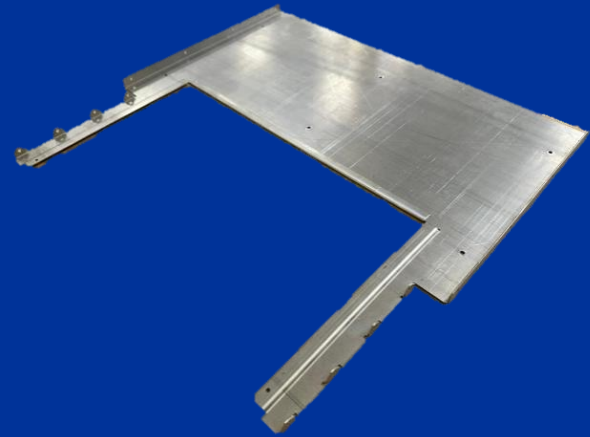


Laser cutting specifications

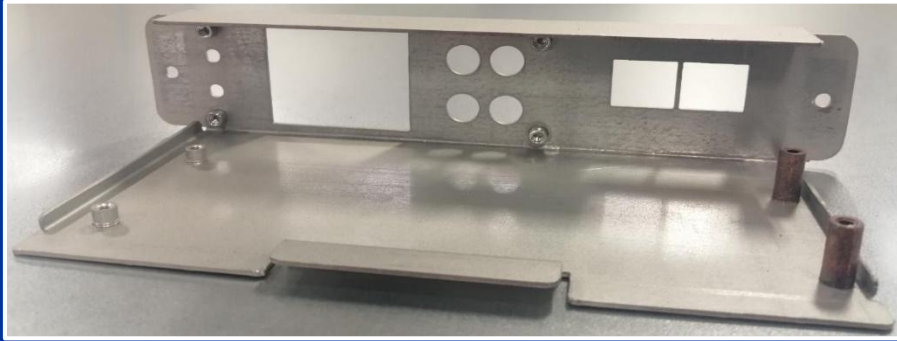
- Model: Amada Ventis 3015 6 KW
- Description: Bend 3 x 1.5 m
- Software: Dr Abe Blank (Driver Laser) Upgrade
- Generator N2 (Keiser): EZMO 1500
- Automated Part Sorting Cell: TK 3015L
- Loading and Unloading System: AMS3015 CL + Tower 10 SHELVES



SHEET METAL PARTS EXAMPLES



Server technology parts



Final customers:



Locally outsourced activities



- Zinc coating
- Phosphate and oil
- Zinc, nickel and tin plating
- Heat treatment
- Component assembly
- Silk screen and pad printing
- **Black oxide**
- Material laboratory tests



Quality & productivity

- Zero Defect Culture
 - *2023 PPM 6
 - *2024 PPM 6
 - *2025 PPM 8
- IATF 16949: 2016 (Plant1)
- ISO 9001:2015 (Plant 3)
- ISO 14001 (Plant 1 & 3)
- CTPAT

- Quality management system including risk assessment

- Lean manufacturing methods; strong focus on continuous improvement

- Acclimatized metrology lab



CMM Wenzel



Optical Comparator

5S implementation

*Actual Die Rack location



*Actual Production floor



* Actual Production floor



*Actual tool kit organization



*Packaging area removed



* PT08



Logistics

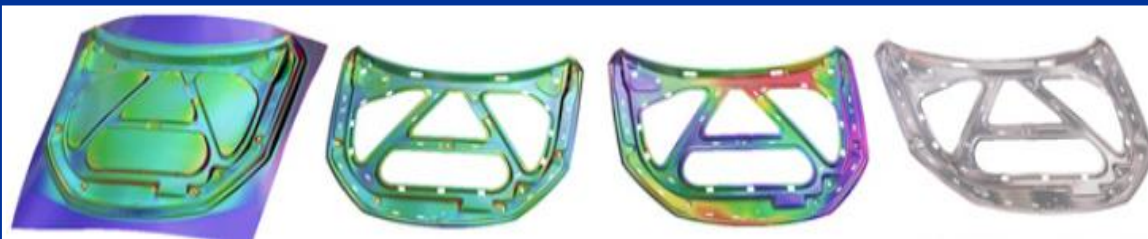
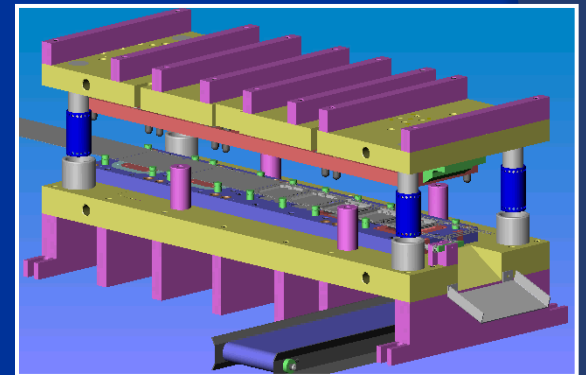


- ⦿ Regular shipments to Ciudad Juárez, El Paso, Reynosa, Bajío,...
- ⦿ Export to USA, Canada, South-America, Europe, Asia.
- ⦿ Warehouse in El Paso
- ⦿ CTPAT
- ⦿ MRP PLEX
- ⦿ IMMEX permit



Why Manesa?

- Competitiveness
- Technology
- Performance
- Supply Chain
- Implementation time
- Speed to response
- Flexibility



Contact

Manufacturas Estampadas s.a. de c.v.

Juan Ruiz de Alarcón 305 Complejo

Industrial Chihuahua 31136

Chihuahua, Mexico

Tel: +52 (614) 481 14 49

info@manesa.com

www.manesa.com

Multilingual support

