

## Global Presence



### • Hong Kong (Headquarter)

5/F, Chai Wan Industrial Centre, 20 Lee Chung Street, Chai Wan, Hong Kong  
Tel: (852) 28975603

### • Dongguan

45 Hongmei Commercial Street, Hongmei Town, Dongguan City, Guangdong Province, PRC  
Tel: (86) 769-86227100

### • R&D Center

9/F, A1, Guangda We Valley, Songshan Lake, Dongguan City, Guangdong Province, PRC  
Tel: (86) 769-84396918

### • Shanghai Office

Room 923, 9th Floor, Building A, No. 1156 South Shenbin Road, Minhang District, Shanghai, PRC

### • Germany Office

Industriestraße 27, 74912 Kirchartd, Germany

### • North America Sales Representative

Querétaro, México  
Tel: (52) 442 788 7926



### Contact

auto@defondetech.com  
www.defondetech.com

## R&D Capability

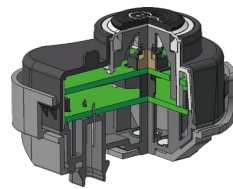
### CAD

#### Mechanical Design

- CATIA / ProE etc.

#### Electronic Design

- Circuit / PCB Design etc.



### Embedded System Engineering

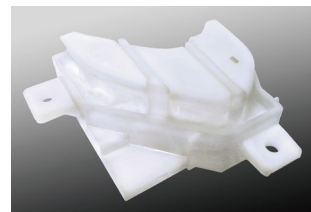
#### Software Development

- Automotive SPICE
- LIN / CAN Development
- Embedded Software Workbench

### Prototyping

#### Fast Prototype

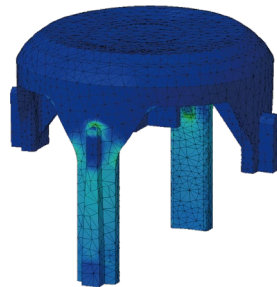
- 3D Printing
- Sampling



### CAE

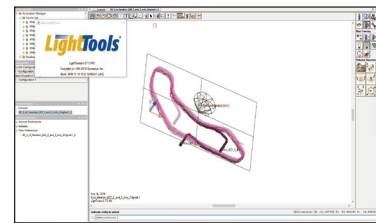
#### Structure Analysis

- Finite Element Analysis



#### Optical Simulation

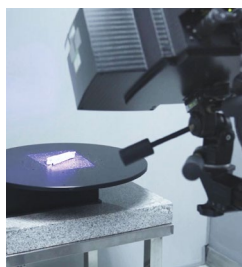
- Luminance
- Homogeneity
- Leakage / Cross-Talk



### Validation

#### Laboratory

- 3D Scanning
- Force-travel Measurement
- Light Illumination Measurement
- Light Spectrum Measurement
- Reliability / Durability Test
- Environmental Test



## Your One-stop Solution From Design to Manufacturing



### Manufacturing

- Industry 4.0
- Digital Manufacturing Automated Plant
- 6 Sigma and Lean Manufacturing Management
- Data Visualization

### R&D

- National Hi-tech Enterprise
- Intelligent Human Machine Interface Solution
- IoT Connectivity Solution
- Product Design and Quick Prototyping
- Software and Firmware Development
- Design for Manufacture and Assembly

### Quality Management

- Third Party Accredited Laboratories
  - CQC-A Class Enterprise
  - UL CTPD / CTF3
  - Interte RTL
  - CNAS
- IATF 16949
- Customer Accredited Laboratory
  - Saic Volkswagen
  - Audi

# BJA Automotive GmbH

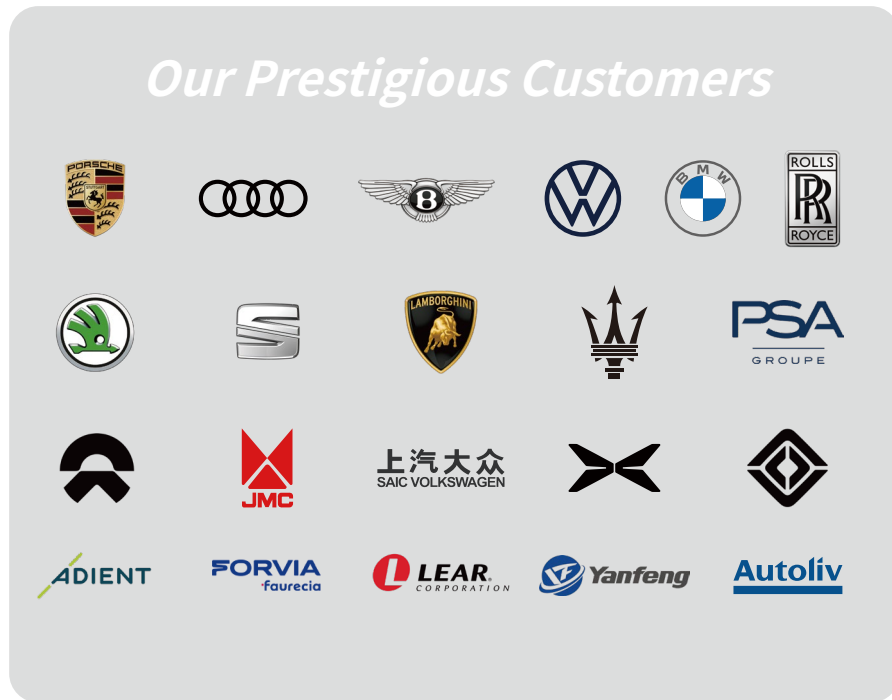




# BJA Automotive GmbH

Founded in Germany, BJ Automotive (BJA) has been producing the highest quality components for the world's top automotive brands since 1971.

Since joining Defond Group in 2006, BJA has been combining innovative design capability with Defond's 40+ years reliable and cost-effective manufacturing experience to help customers in adapting to the fast-changing markets and technologies. With regional offices, technical teams and local representatives throughout Asian and European countries, BJA provides customers with timely, all-round professional services free of language barrier.



- Product Design and Quick Prototyping
- Software and Firmware Development
- Automated Manufacturing and Industry 4.0
- In-house Testing (3D AOI, X-Ray, Salt Spray, Thermal Shock)
- Third Party Accredited Laboratories  
CNAS, CQC-A Class Enterprise, UL CTPD / CTF3, Intertek RTL, Automotive SPICE®
- Quality Management  
IATF 16949, ISO 9001, ISO 17025, ISO 14001, ISO 13485
- Compliances: RoHS, REACH

\*The trademarks on this page are sourced from Internet, copyright is owned by the respective companies.

## 40+ Years of High Quality Manufacturing Experience



BJA's dedicated R&D and manufacturing facilities in Germany and China, global supply chain and sourcing capabilities help customers to turn innovative design concept into mass produced products with superior quality and competitiveness:

- Multi-function Seat Switches
- Door and Window Switches
- LIN CAN Console Switches
- Steering Wheel Switches
- Touch-sensing Switches
- LIN & RGB Ambient Lighting