



Company Profile



Ishimitsu Industry Mexico, S.A. de C.V.



Updated: February 2024

ISHIMITSU INDSTRY CO.,LTD.

Sales department

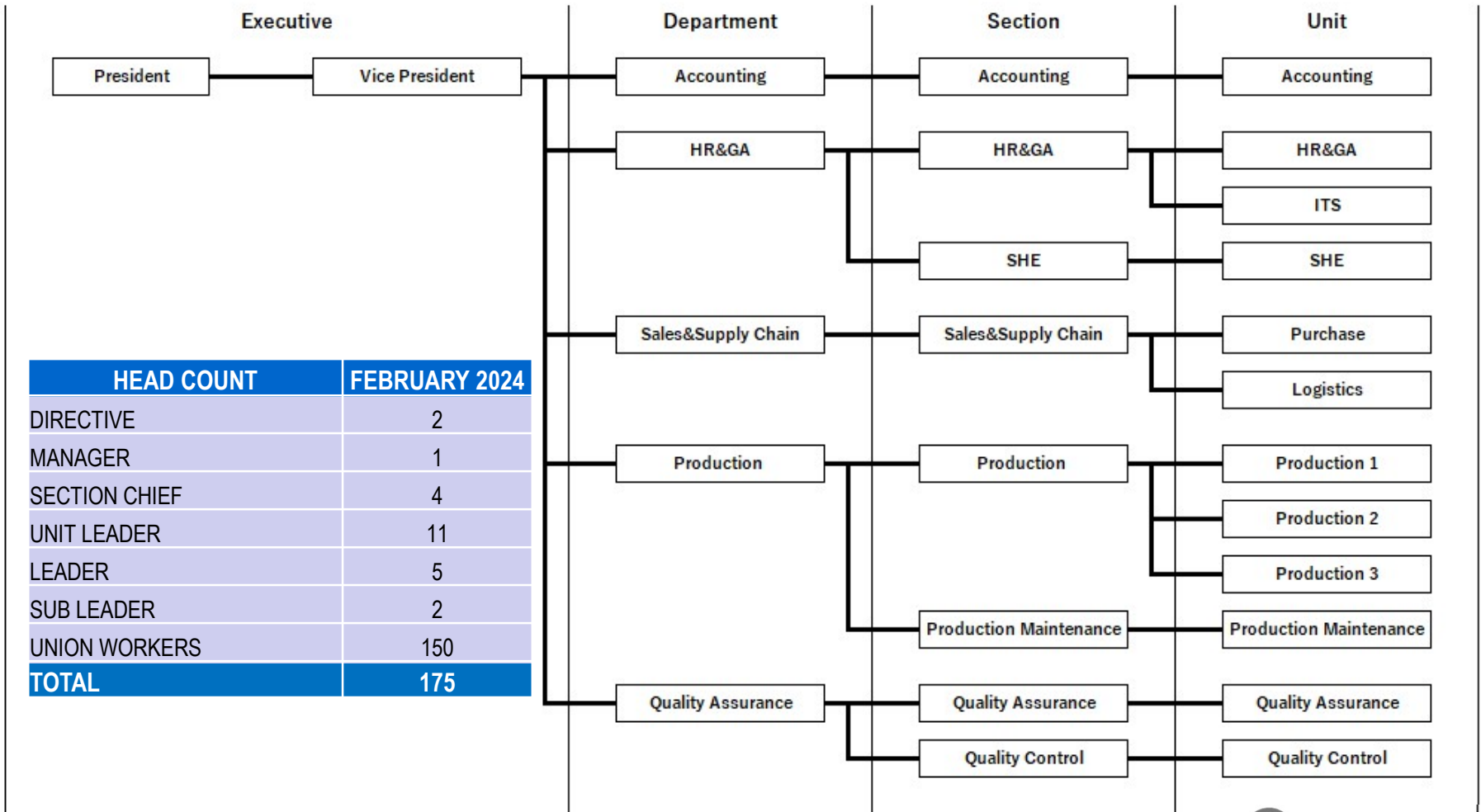


Ishimitsu-MX Company profile

Company Name: 会社名	Ishimitsu Industry Mexico, S.A.de C.V.
Nature of Business: 事業内容	Cutting work
Managing Director: 社長	Yasushi Fukuta (Mr.)
Location: 所在地	Av.Cerrada la Estacada, 470 Parque Industrial Querétaro,Puerto de Aguirre C.P. 76220 Querétaro, Qro. (メキシコ合衆国 ケレタロ州 PIQ工業団地)
Established Date: 設立年月日	March 10th, 2017
Start of Operation: 操業開始	September 1st, 2017
Capital: 資本金	USD 9,700,000 (Include variable capital, Plant to increase)
Shareholder: 出資者	ISHIMITSU INDUSTRY CO.,LTD. (100%) 石光工業(株)
ISO Certifications: ISO取得状況	ISO9001:2015 (Issued on Jan 23, 2020 , updated on Feb 14, 2023)
Land area: 敷地面積	13,481㎡
Factory area: 工場面積	6,444㎡
Customers: 取引先	DENSO Manufacturing Athens Tennessee,Inc DENSO MEXICO, S.A. DE C.V.



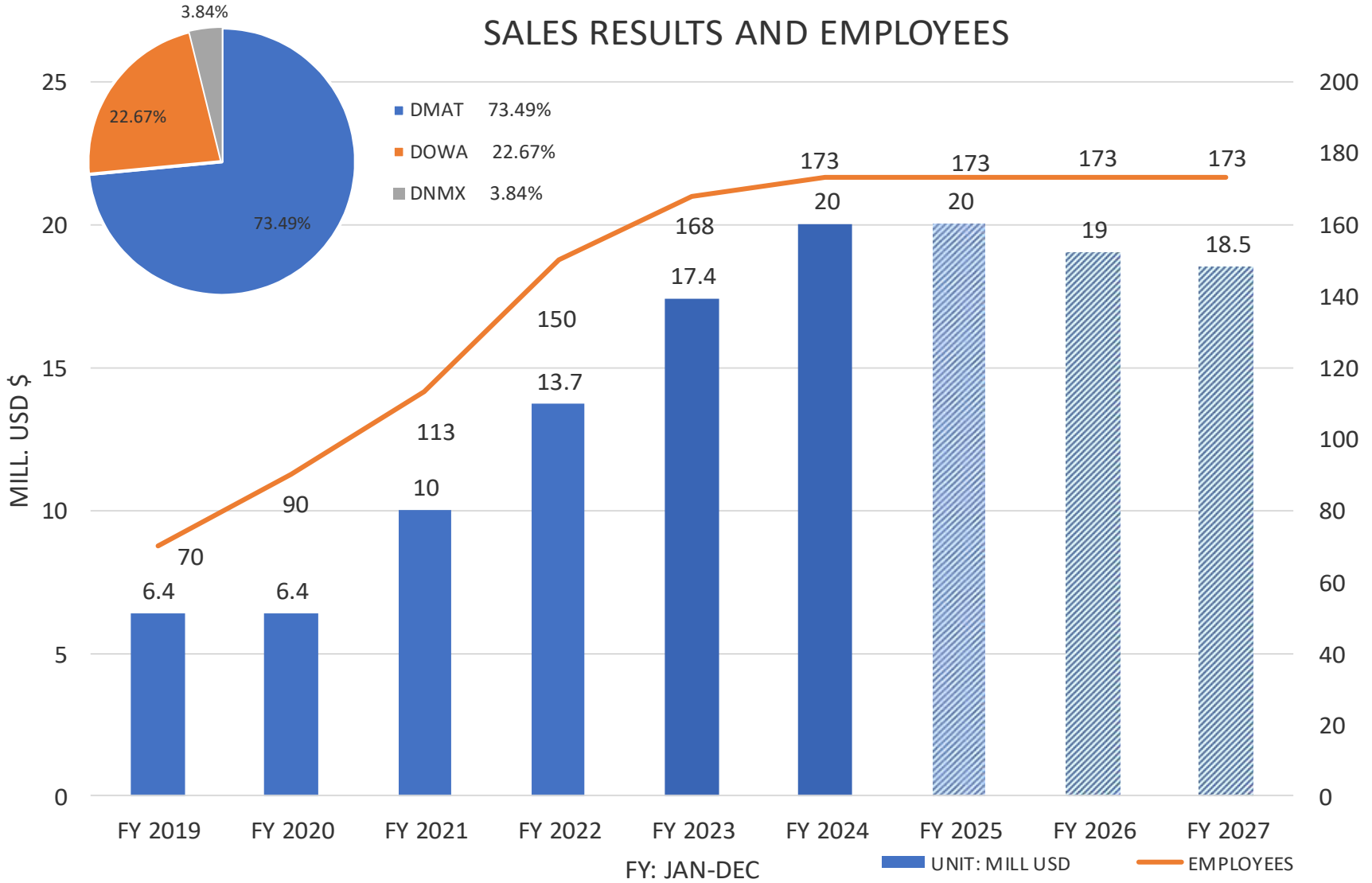
IIM -> Organization chart





Ishimitsu-MX Company profile

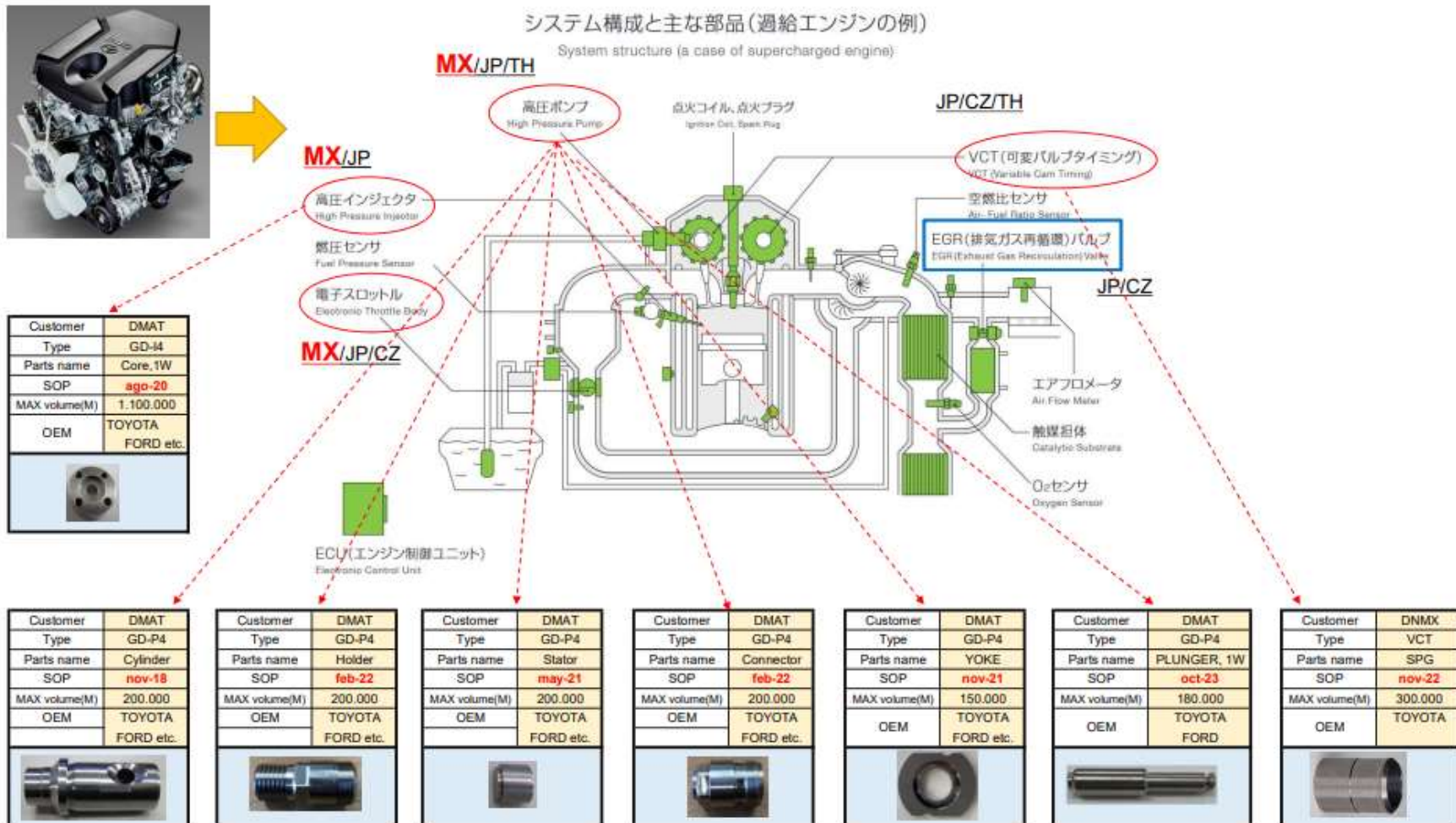
SALES RESULTS AND EMPLOYEES





IIM -> Production Summary

Ishimitsu-MX product summary

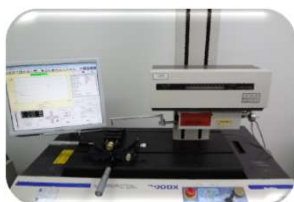




Ishimitsu-MX Company profile

IIM -> Production Facilities (生産設備)

		Unit
Production Equipment	NC	64
	CNC	10
	Machining center	14
	Center less grinding machine	4
	Deburring Machine	3
	Washing machine	2
	Inspection equipmet	1
	Image inspection equipment	2
Total	100	

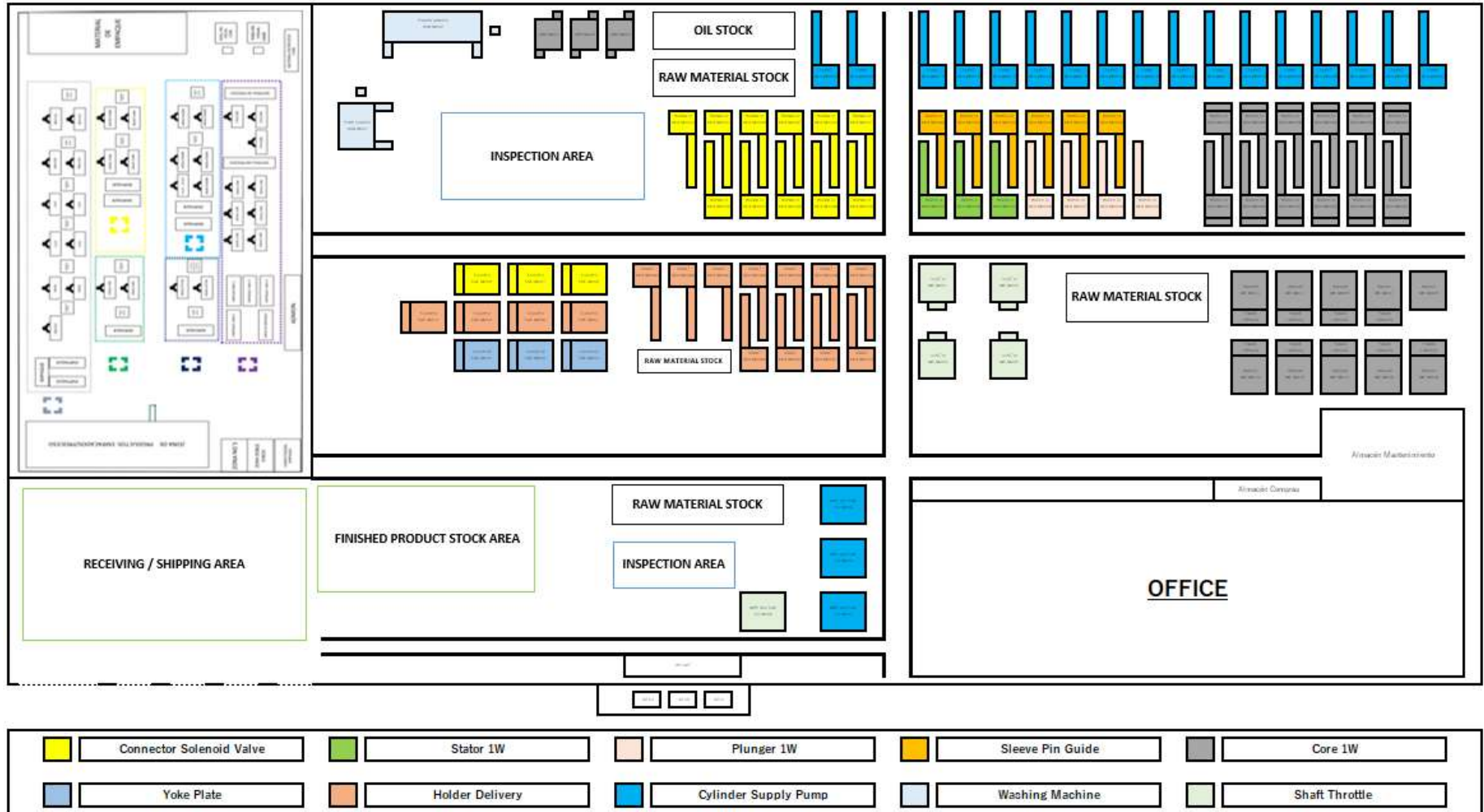


Measurement Equipment	Profile measuring machine	1
	Roundness measuring machine	2
	Roughness & contour measuring machine	1
	Profile Projector	2
	Total	6





Ishimitsu-MX Plant Layout Plan 2024





Ishimitsu Global Map

Ishimitsu Global



ヨーロッパ拠点 (チェコ)



Ishimitsu Manufacturing
Czech s.r.o.

2003 年操業開始



東南アジア拠点 (タイ)



Ishimitsu Industry
(Thailand) Co., Ltd.

2012 年操業開始



日本国内 (9 拠点)



Ishimitsu Industry
Co., Ltd.

1953 年操業開始



北アメリカ拠点 (メキシコ)



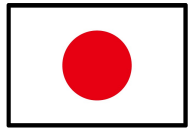
ISHIMITSU INDUSTRY
MEXICO, S.A.DE.C.V.

2018 年操業開始





Gracias



ありがとうございます



Děkuji



ขอบคุณ