

The logo icon consists of three stylized, overlapping shapes: a dark blue 'J' on the left, a green 'M' in the middle, and a dark blue 'S' on the right, all rendered in a bold, blocky font.

# **JMS**

## ***INCORPORATED***

---

**ADDING VALUE TO METAL**

# LOCATED IN HOLLAND, MI USA



Tool Company and  
FG Warehouse



Administrative &  
Production Facility



# GENERAL INFORMATION

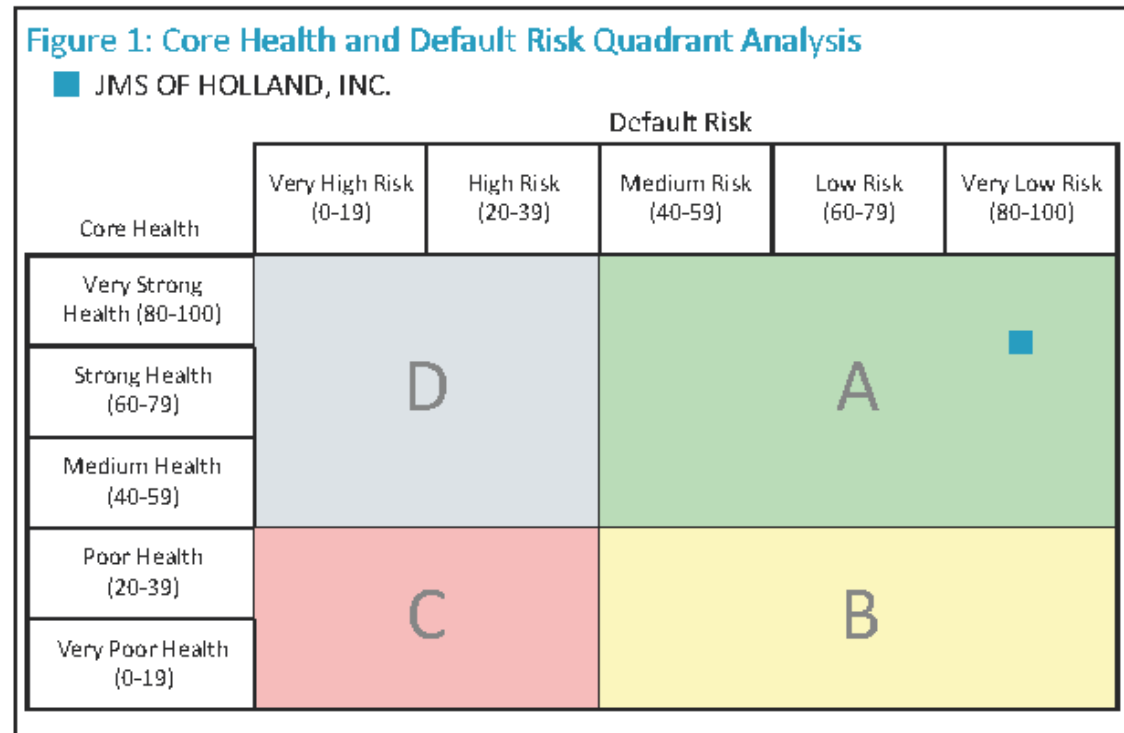
- **High volume supplier of engineered stampings since 1994**
- **Transfer and Progressive die processes: 25 to 600 Tons**
- **Specialist in deep-draw stamping**
- **Experienced provider of assemblies and value-add operations**
- **Full Tool & Die capabilities**
- **In-house design, FEA simulation and prototyping**
- **100 FTE / 3 Shifts of Operation**

# STRONG FINANCIAL HEALTH

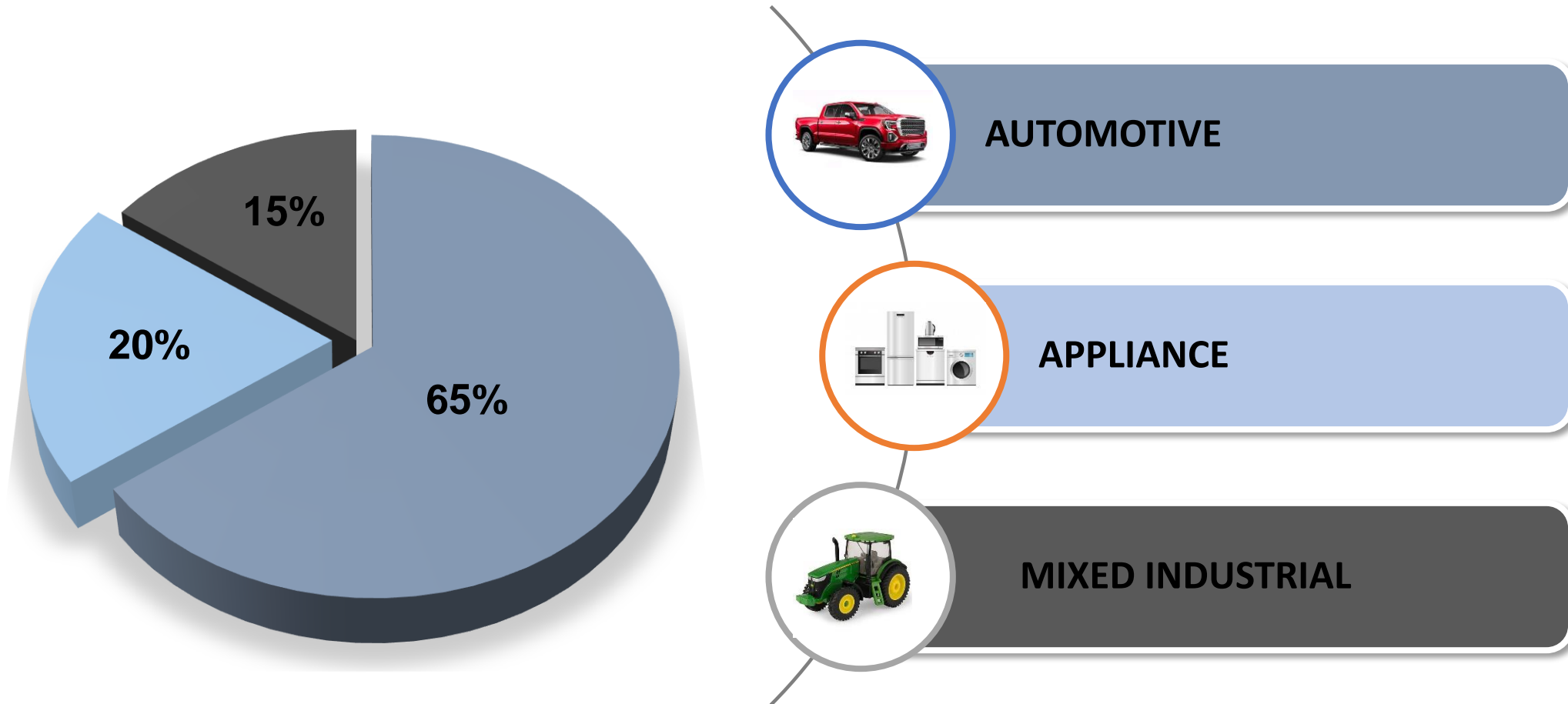


JMS OF HOLLAND, INC.

Very low default risk, with very strong Core Health.



# MARKET DIVERSITY



# SAMPLE CUSTOMERS

OE



Honeywell



Tier 1



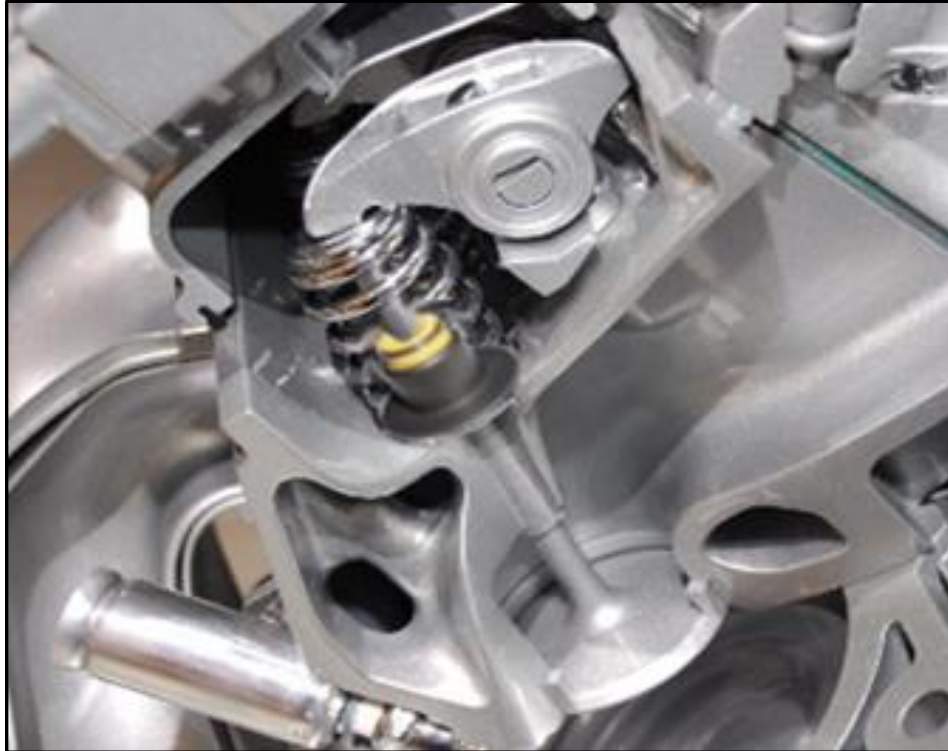
EAT•N



BOSCH



# PRODUCT EXAMPLE



## Valve Seal Retainers

80,000,000 pieces supplied annually

### JMS Tier-2 Supply:

68% of Ford engines

54% of GM engines

15% of Chrysler engines

85% of Cummins engines

99% of Caterpillar engines

99% of John Deere engines



JOHN DEERE

# PRODUCT EXAMPLE



## Assembled Fasteners

100% Tier 2 supply  
Cummins ISX, DSX  
Ford Dragon





# PRODUCT EXAMPLE



## PCV Fitting Assemblies

*Co-designed with GM Powertrain*

100% Tier 2 supply

GM Smallblock V8

GM Performance Car V6



# PRODUCT EXAMPLE



## Gas Valve Stems

35 JMS Part Numbers  
15,000,000 Pieces Annually



# PRODUCT EXAMPLE



JMS Supplies its OE customer with 16 varieties of Stiffeners for use in gas line couplings

Coupling Stiffeners  
Application: Natural Gas Distribution

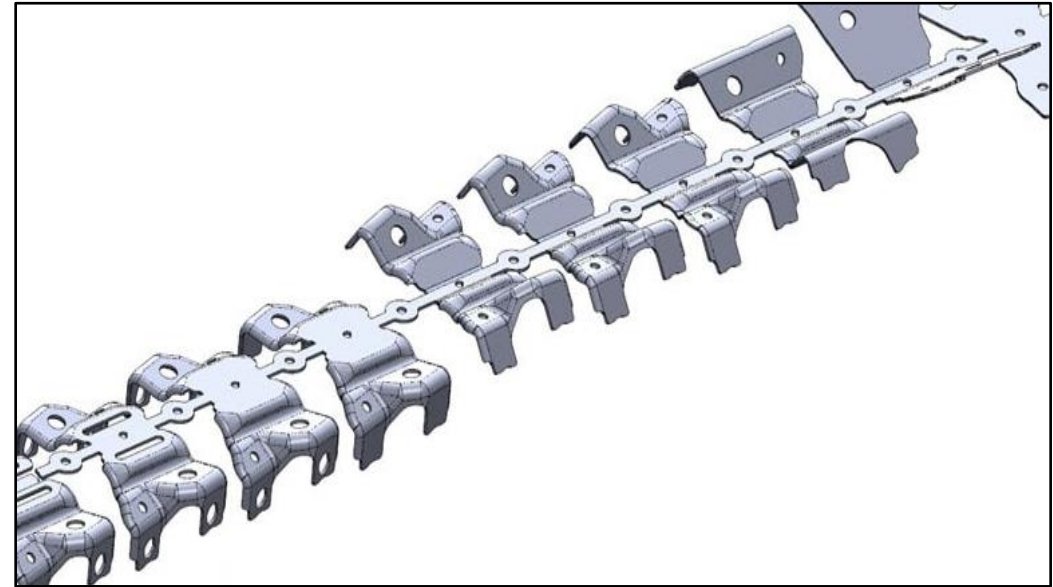


# DUAL EXPERTISE:

## TRANSFER PRESS



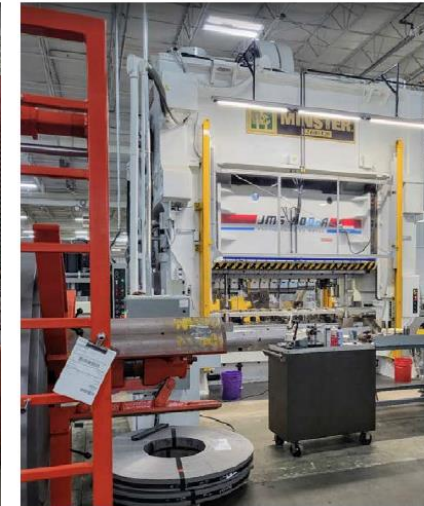
## PROGRESSIVE DIE



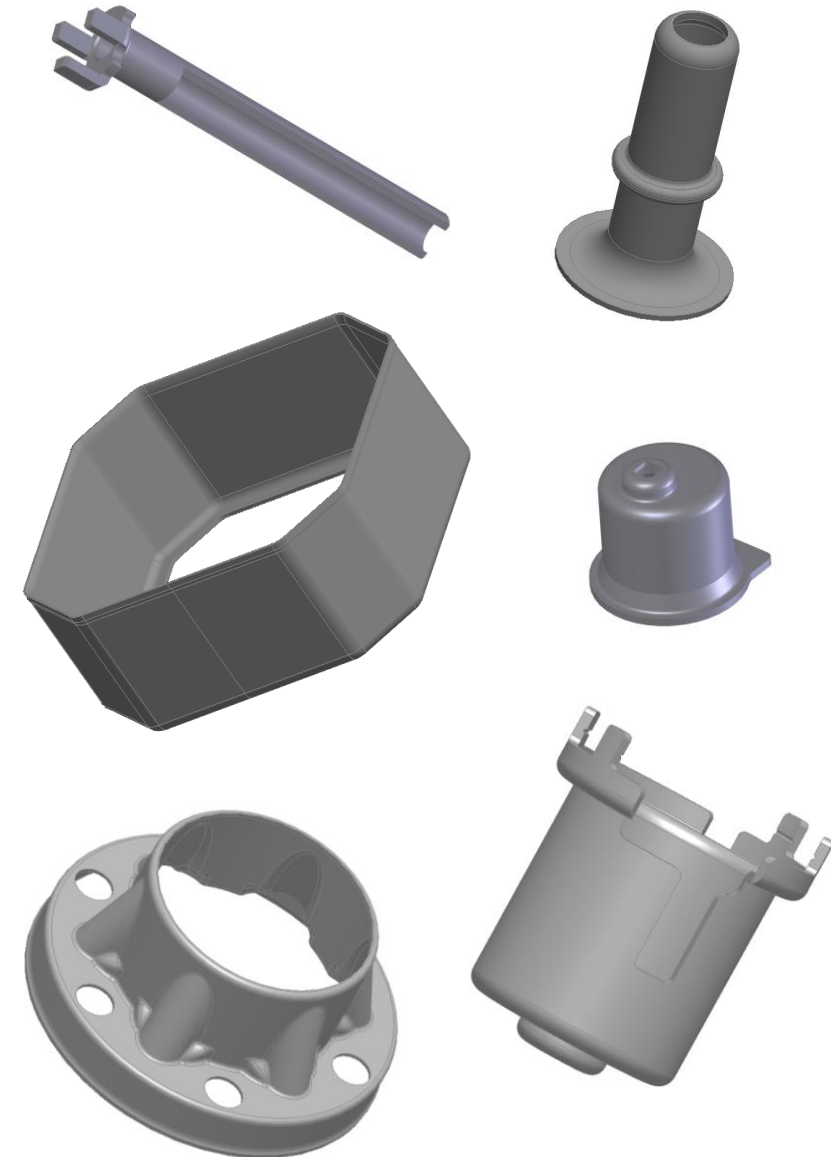


# KEY EQUIPMENT

Size (Tons)	Qty.	Tool Configuration
600	1	Transfer
300	1	Progressive Die
275	2	Transfer
220	1	Progressive Die
200	2	Progressive Die
160	1	Transfer
150	2	Transfer
100	1	Progressive Die
100	1	Transfer
75	1	Transfer
65	1	Transfer
60	1	Transfer
45	12	Transfer
25	6	Transfer

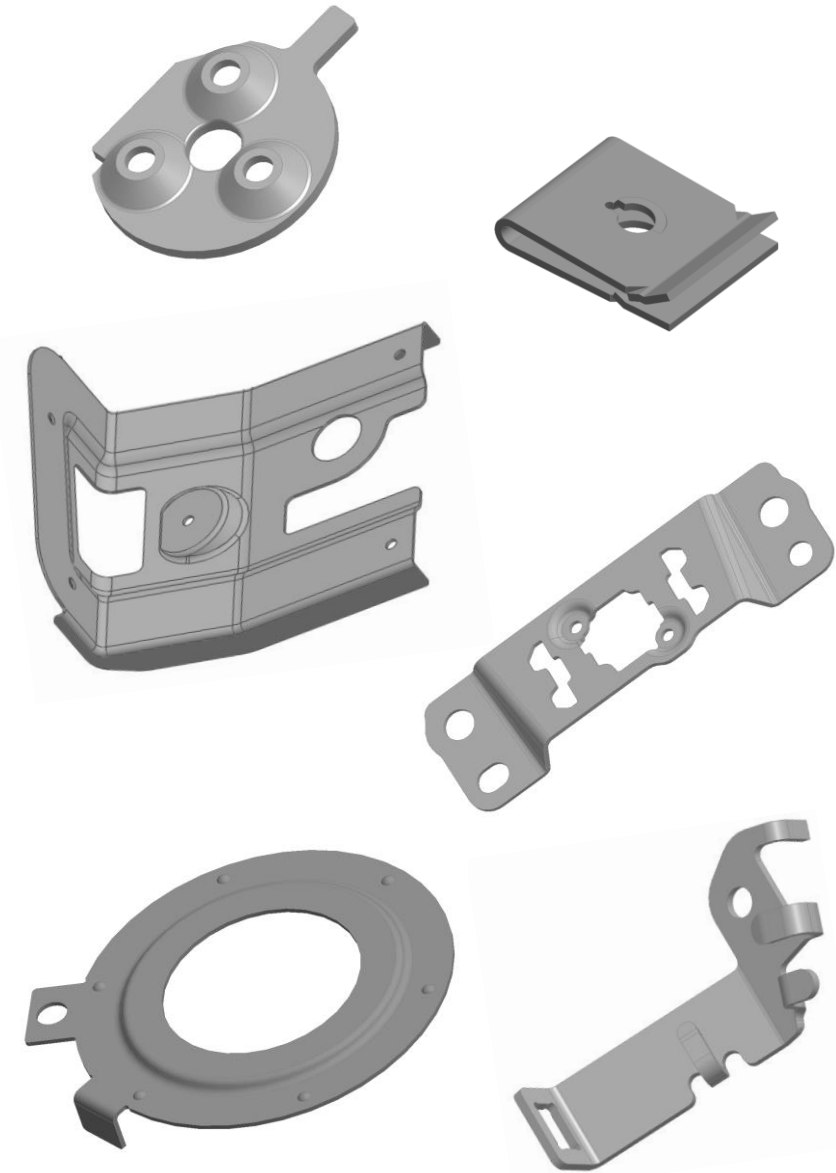


Typical Parameters	JMS Transfer Press Department					
	Small		Medium		Large	
Tonnage	25	65	100	160	275	600
Blank Diameter (mm)	12					240
Part Diameter (mm)	6.5					160
Draw Depth (mm)	7.0					135
Mat'l Thickness (mm)	0.25					4.0
Tool Cost	\$20K	\$40K	\$50K	\$60K	\$80K	\$160K



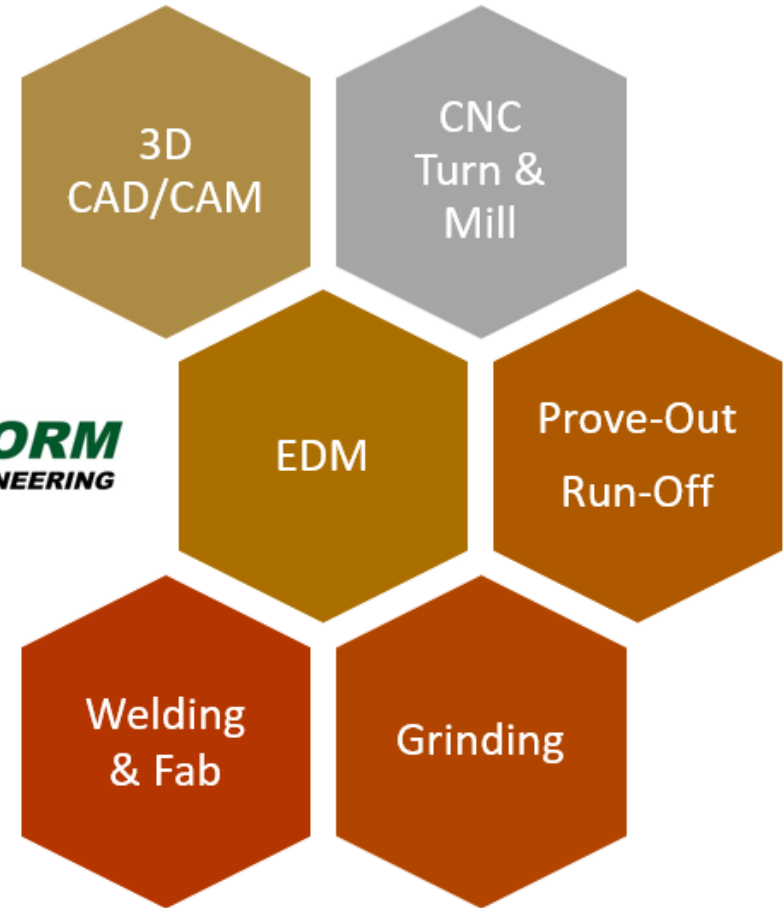
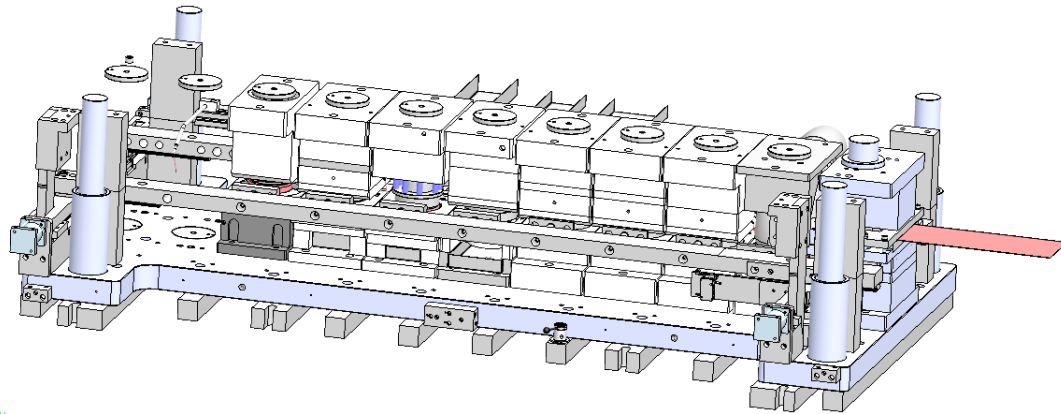


Typical Parameters	JMS Progressive Die Department					
	Small		Medium		Large	
Tonnage	60	100	160	220	200	300
Strip Width (mm)	25	→				300
Draw Depth (mm)	15	→				33
Mat'l Thickness (mm)	0.5	→				4.8
Bed Length	45 In.	→				84 In.
Tool Cost	\$30K	\$40K	\$40K	\$60K	\$60K	\$80K



# TOOL & DIE

Partnership with  
**True Form Tool And Engineering**,  
a co-owned company located on  
our manufacturing campus

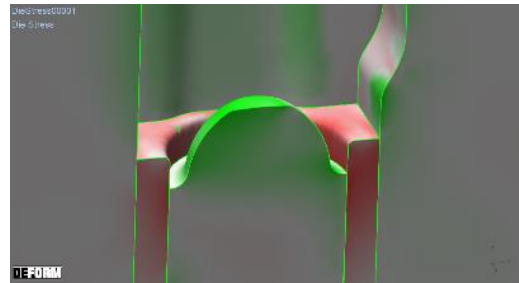


# PRODUCT ENGINEERING

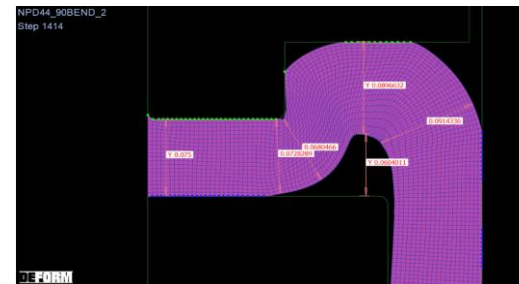
Dedicated resources for  
VAVE, DFM and process  
conversions

FEA simulation software  
for efficient product  
development and  
customer NPI support

## Die stress analysis



## 3D & 2D Simulation



# ADVANCED STAMPING: DEEP DRAW + EXTRUSION

Conversion of machined parts using specialized metal forming techniques



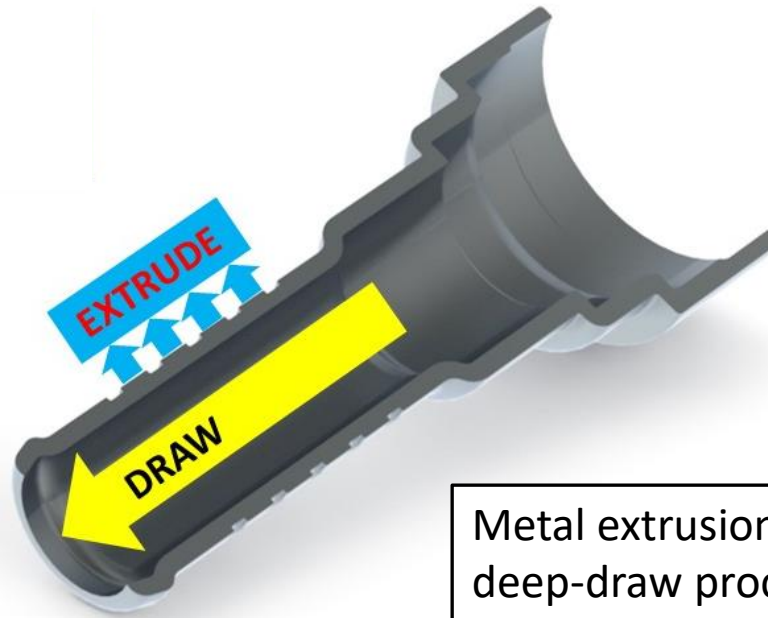
Aluminum Application



CRS Application



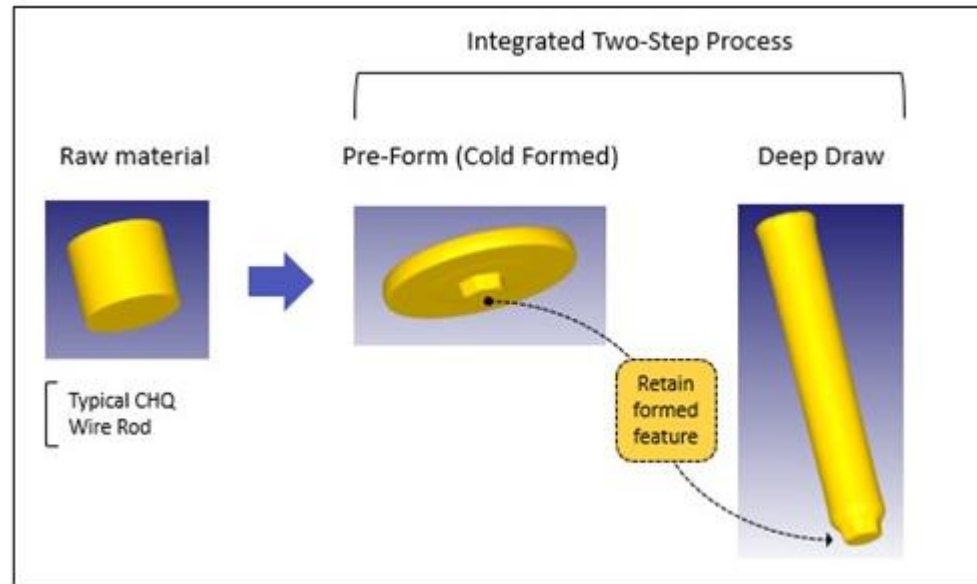
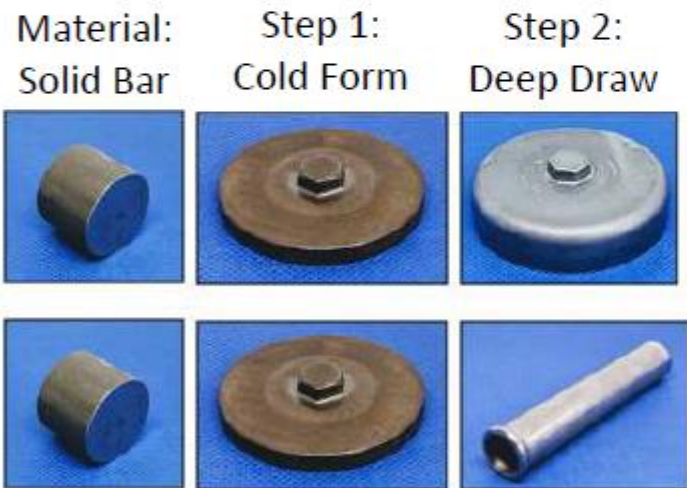
Copper Application



Metal extrusion in deep-draw process

# ADVANCED STAMPING: COLD FORM + DEEP DRAW

Integration of forging to produce bulk features in deep drawn parts

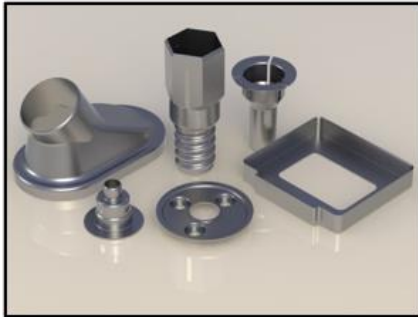


# Contact information

JMS of Holland, Inc.  
1010 Productions Ct.  
Holland, MI 49423  
USA

Tel 1-616-796-2727

<http://www.jmsincorporated.com/>



Matt Shepherd

V.P. Sales

Tel 1-616-377-8090

[m.shepherd@jmsincorporated.com](mailto:m.shepherd@jmsincorporated.com)

Sam Jordan

Account Manager

Tel 1-616-796-2727 Ext. 108

[s.jordan@jmsincorporated.com](mailto:s.jordan@jmsincorporated.com)