



Helping Leading Brands *Lead*



# 4 Global Divisions



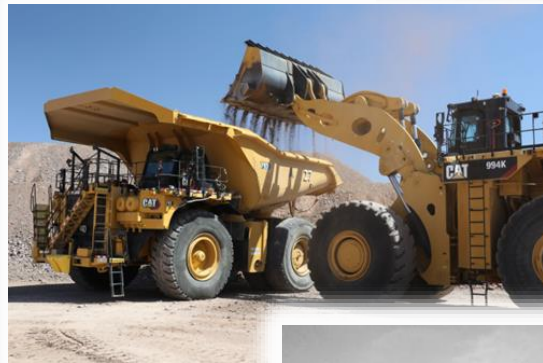
TOILET SEATS



# Bemis Global Markets we serve



- 1) *Agricultural*
- 2) *Power sports / Golf / Recreational vehicles*
- 3) *Construction*
- 4) *Heavy Truck*
- 5) *Lawn & Garden*
- 6) *Industrial Applications*
- 7) *Appliances*
- 8) *& Others*





# Expertise in Insert molding, Overmolding and Welding tanks



- Hydraulic Tanks
- Diesel Tanks
- DEF Tanks
- Coolant Tanks
- Motor Oil
- Industrial Tanks
- 3 Ounces - 30 Gallons

- Air Intake & Manifolds
- Hydraulic Filter Housings
- Air Silencers
- Control Panels
- Media Boxes
- Acoustic Chambers
- Overflow tanks
- Air duct & venting assemblies
- Plastic to Metal

# CERTIFICATIONS



## Contract Molding Solutions & Kelch – Sheboygan Falls Wisconsin

- ISO 9001:2015

## Contract Molding Solutions – Lenoir, North Carolina

- ISO 9001:2015

## Bemis Health Care – Sheboygan Falls Wisconsin

- ISO 13485:2016

## Contract Molding Solutions – Monterrey Mexico

- ISO 9001:2015
- ISO 13485:2016





## NA Facilities locations & Press Tonnage Range

- ✓ Sheboygan Falls, WI
- ✓ Lenoir, NC
- ✓ Monterrey, MX



**BEMIS**  
Contract Group™



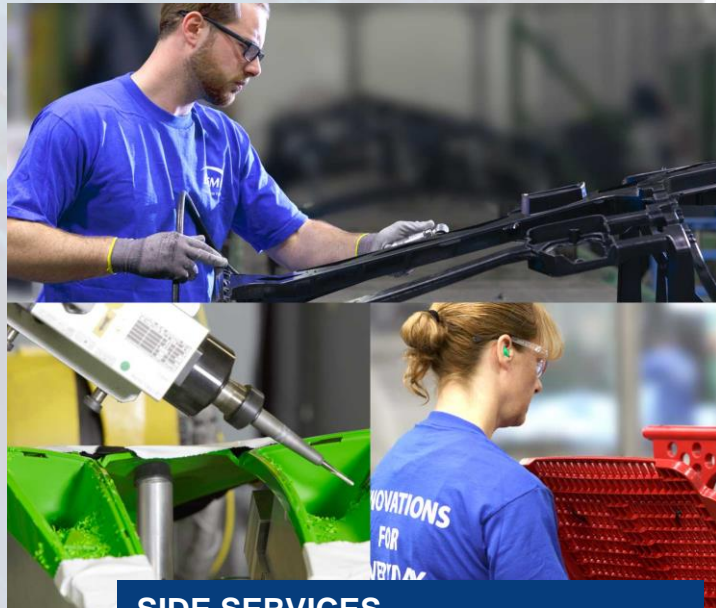
- **160 Ton up to 6600 Ton**

# Technical Capabilities



Helping Leading Brands *Lead*

**MATERIALS EXPERTISE**



**SIDE SERVICES**



**DESIGN & DEVELOPMENT**



# Bemis de Mexico 2024



We have facilities in:

**SHEBOYGAN FALLS, WI - Headquarters**

**LENOIR, NC**

**MONTERREY, NUEVO LEON, MEXICO**



## Bemis de Mexico

❑ Total area 366,000 sqf (34,000 sqm):

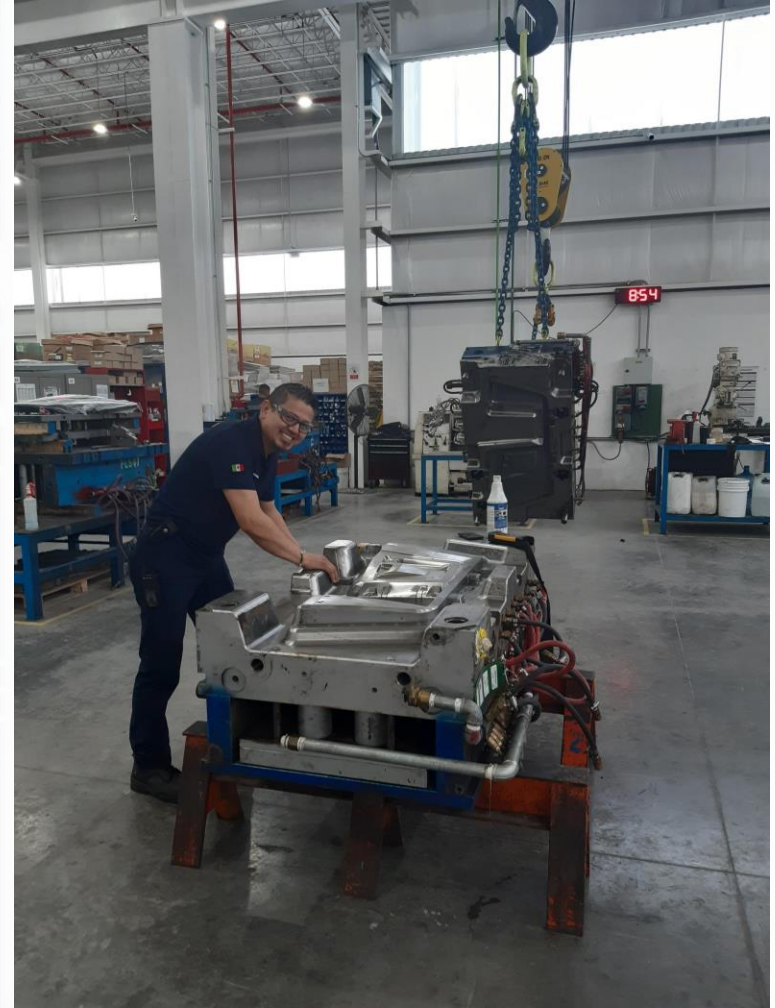
### CERTIFICATIONS

- ISO 9001 Quality Management Systems
- ISO 13485 Management Systems for Medical Devices

- ❑ Area & infrastructure for high tonnage molding presses & Assembly
- ❑ Warehouse
- ❑ Shipping/Receiving Docks



# Bemis de Mexico Technical Capability





# Bemis de Mexico Contract Molding

## Press examples



725-2K Ton

2K or 2 shot molding



950-2K Ton

Helping Leading





# Bemis de Mexico Contract Molding

## Large tonnage molding



3600 Ton



2600 Ton





The logo features a white curved line above the word "BEMIS" in a bold, italicized, white sans-serif font. Below "BEMIS" is the text "Contract Group" in a smaller, italicized, white sans-serif font, followed by a trademark symbol (TM).

***BEMIS***  
*Contract Group*<sup>TM</sup>

The text "Thank you" is written in a white, italicized, sans-serif font. The words "Thank" and "you" are underlined with a dashed red line.

*Thank you*

