



**NEW
CONCEPT**
TECHNOLOGY

Vertically Integrated Turnkey Solutions

ADVANTAGES

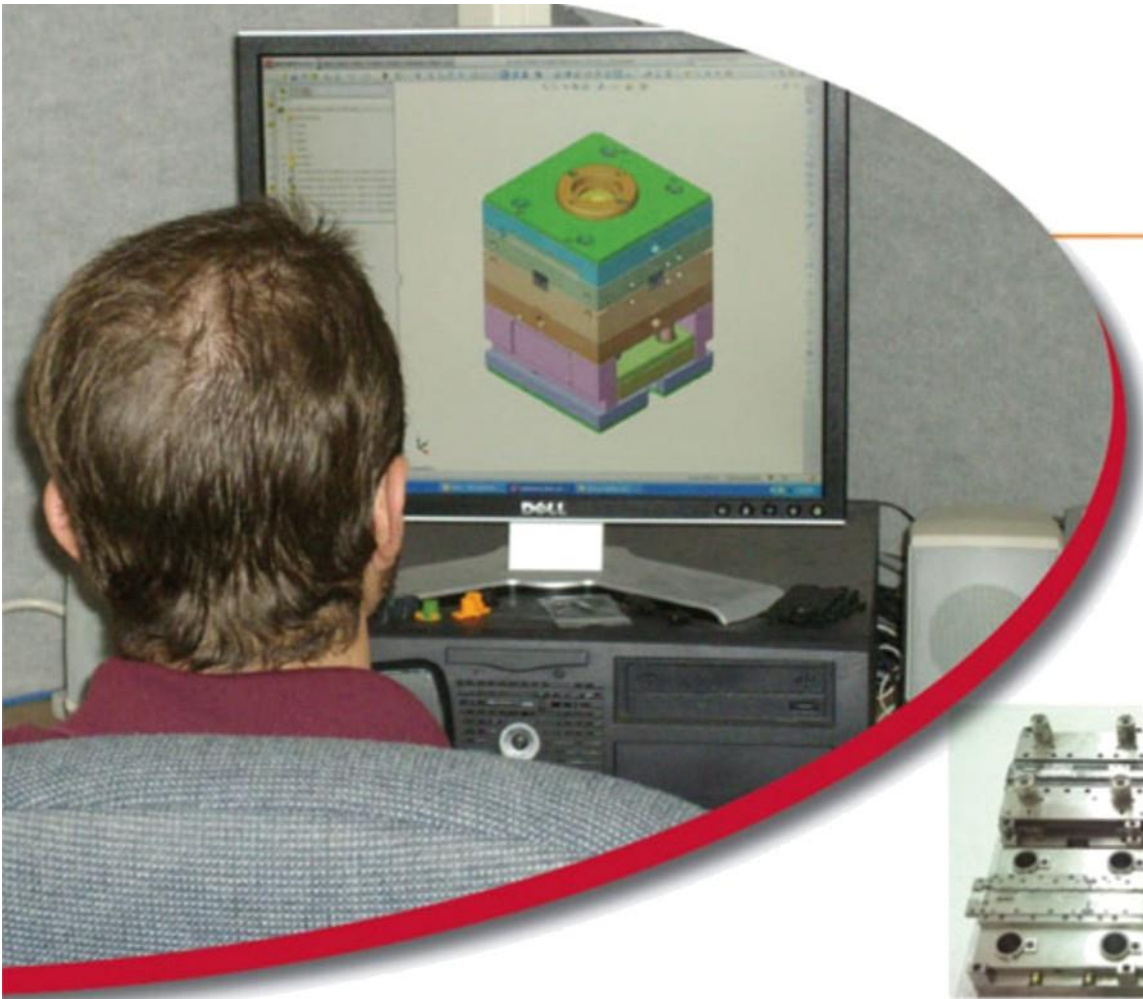
In Business since 1985 providing a single source for custom components applications

WORLD CLASS INTEGRATED SUPPLIER:

- Internal design for molds, dies and automation assembly
- **Tooling fabrication and 24/7 tooling support**
- High speed stamping up to 1600SPM
- Conventional injection molding
- Insert molding-shuttle, rotary & reel-to-reel
- Cable assembly
- Custom assembly-low and high volume, automated and semi-automated
- **Global Manufacturing**

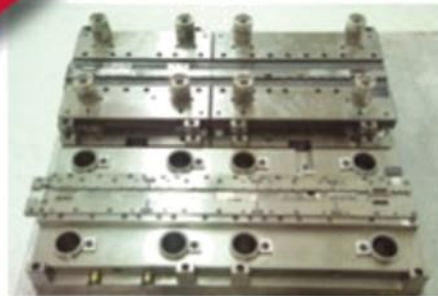
INDUSTRIES SERVED

- ELECTRONICS
 - MEDICAL
 - AUTOMOTIVE
 - INDUSTRIAL AND COMMERCIAL
 - AEROSPACE & DEFENSE
-
- Specializing in collaborative design with customers to optimize component design and manufacturability
 - Employee owned company (ESOP)



IN HOUSE DESIGN

- Tool design engineer with toolmaker certification
- 3D design for progressive dice, molds and assembly machines
- CAD/CAE/CAE
- RJG cavity pressure sensing experience



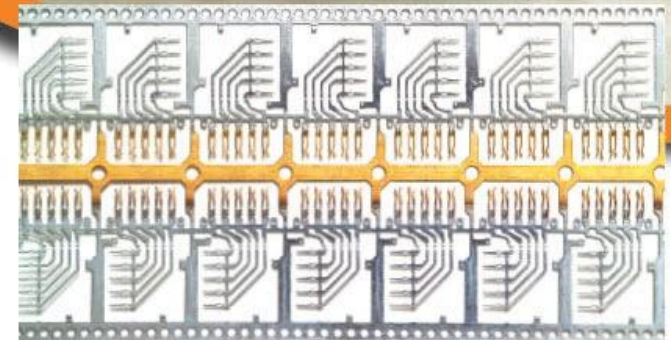
TOOLING FABRICATION

- 45 certified toolmakers / 9 apprentices
- Full compliment of tool building equipment
- 24 hour tooling staffing
- Global tooling supply base



STAMPING

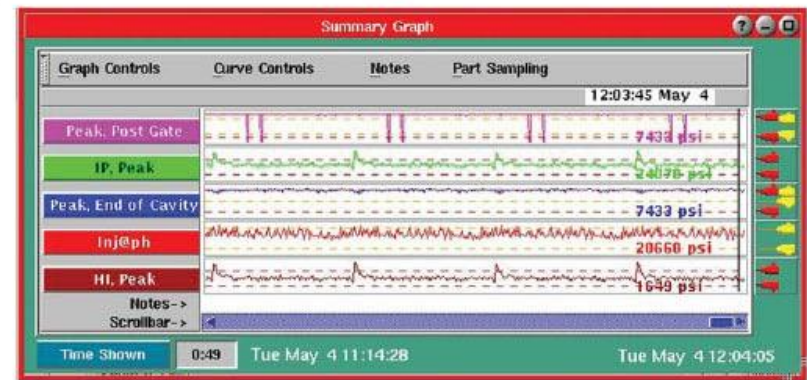
- High speed Bruderer presses
- Thicknesses of 0.0025 – .040"
- Stamp all copper and ferrous alloys as well as inlaid material
- Speeds range upwards of 1600 spm
- **Cost saving modular dies**
- Vacuum slug management for consistent lubrication





CONVENTIONAL MOLDING

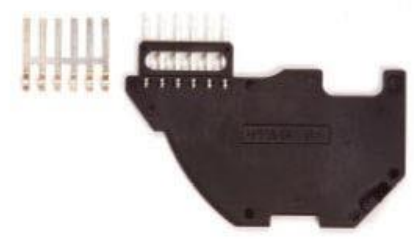
- Routinely mold high density, close tolerance products (0.050 " centerlines, +/- 0.002" true position tolerances)
- Experience with commodity and engineering grade materials such as LCP, PBT, Ryton, Nylon, PEEK, TPE, PEI, TPX, PE, PP
- Mold parts needing multiple side actions
- **Trained in Systematic Molding / Master Molder Level III on staff**
- **Decouple Molding / In Cavity Pressure Sensing**





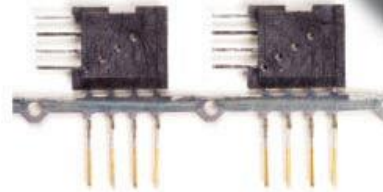
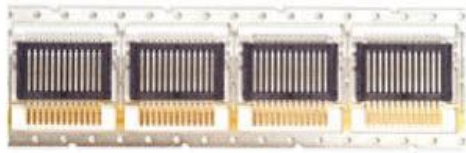
INSERT MOLDING

- We leverage our design and assembly engineering experience to optimize our vertical and horizontal, shuttle and rotary insert molding operations
- We handle very small and very large parts with equal skill and efficiency
- We mold engineering and elastomer grade resins
- **Experience in overmolding wire and cable**



REEL-TO-REEL MOLDING

- Vertical integration including die, mold and automation design as well as tooling fabrication and in house stamping positions us as a leader in reel-to-reel insert molding
- High precision Nissei presses have automated inspection and sensing to assure mold safety and product quality
- SPC monitoring capability exists on all presses
- **PPT camera systems perform 100% inspection of critical dimensions**



Largest Reel-to-Reel molders in the USA!!



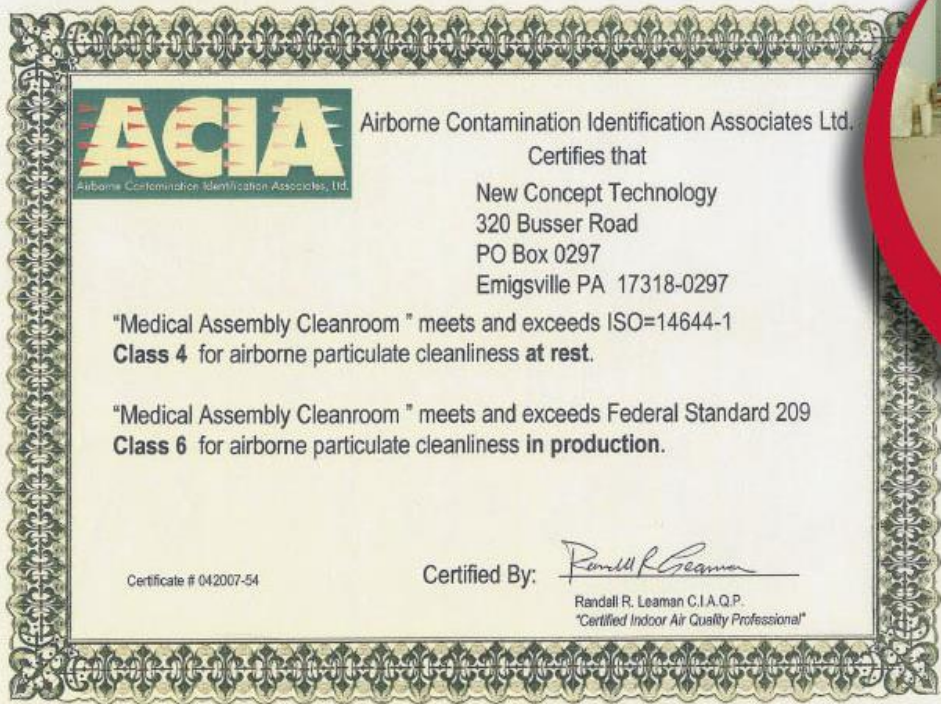
ASSEMBLY

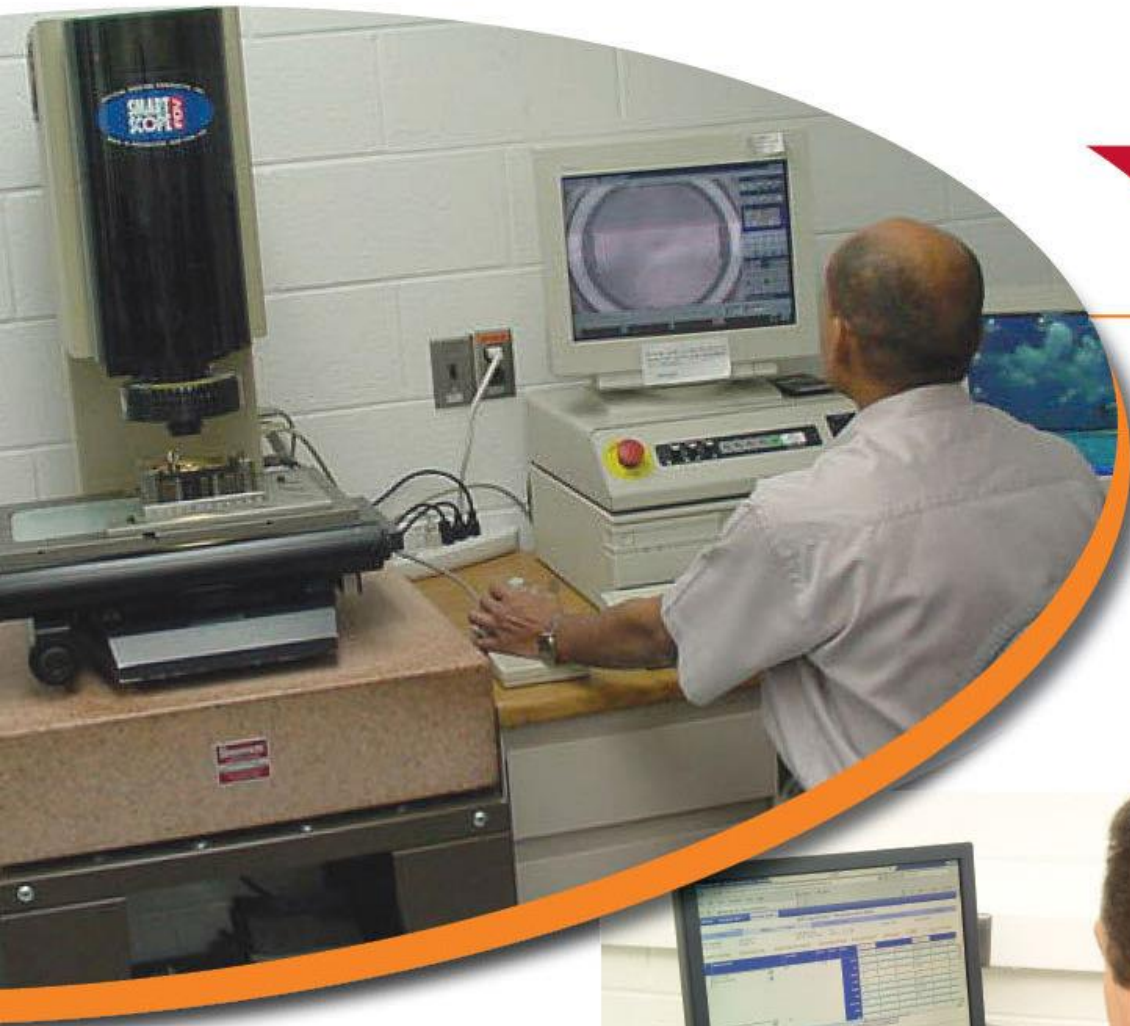
- Semi-automated and automated
- Approved medical assemblies
- Automated fuel delivery component assembly
- Switch assemblies
- Automation design/technician on staff
- Our insert molding expertise allows us to efficiently over mold cables as part of our custom cable assembly operations.
- **Full “Turn Key” Production decreases customer inventory and improves customer cash flow**



MEDICAL CLEAN ROOM

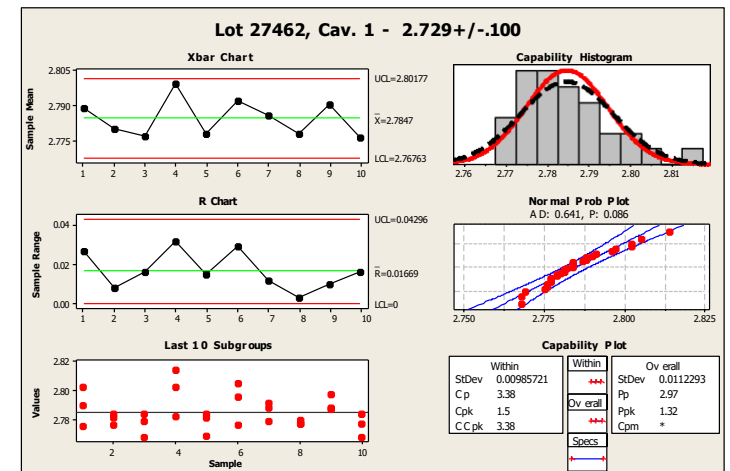
CLASS 6 (10,000) CERTIFIED CLEAN ROOM





QUALITY / METROLOGY

- Approvals and Certifications
 - ISO 9001:2008 Certified
 - UL Approved
 - CSA Approved
 - ETL Approved
- RoHS Compliant for all customers
- PPAP / APQP Experienced
- **Six Sigma Trained Belts**
- **TE Connectivity Web Based Inspection**



FACILITIES

- Company headquarters and manufacturing space housed in 180,000 Sq Ft building
- **Facilities are located on a secure 20 acre tract, C-TPAT compliant**

CONTACT INFORMATION

New Concept Technology
320 Busser Road
P.O. Box 0297
Emigsville , Pa 17318-0297
Phone: 717-741-0840
Fax: 717-741-4301
sales@newconcepttech.com





- **Started operation April 29, 2011**
- **Enclose in:
Dynatech Industrial Park.**
- **50,000 sq. Ft facility**



STRATEGIC ADVANTAGES

- Strategically located in Hermosillo, Sonora, México.
- 4 Hours drive from Nogales AZ USA.
- IMMEX Maquila export program compliant
- IAFT 16949-2016 Certificate
- ISO 9001/2015



AVAILABLE CAPABILITIES

- 70 Operators (110 total staff)

Injection Molding

- 24/7 Molding shift (30% Capacity Open)
- Conventional and Over Molding

Stamping

- 24/5 Stamping (80% Capacity Open)

Assembly

- 24/5 Assembly shift



NCT MX ISO 9001-2015 AND IATF 16949-2016 CERTIFICATE

ABS Quality Evaluations
Certificate Of Conformance
 This is to certify that the Quality Management System of:
New Concept Technology, Inc.
 Necontech de Mexico
 OBRERO MUNDIAL NO. 8 EL LLANO
 Hermosillo, Sonora 83210
 México

has been assessed by ABS Quality Evaluations, Inc. and found to be in conformance with the requirements set forth by:
ISO 9001:2015
 The Quality Management System is applicable to:

MANUFACTURE OF CUSTOM MOLDED COMPONENTS INCLUDING THE ASSEMBLY OF COMPONENTS.

This certificate may be found on the ABS QE Website (www.abs-qe.com). For certificates issued in the People's Republic of China information may also be verified on the CNCA website (www.cnca.gov.cn).

Certificate No: 53293
 Effective Date: 19 August 2021
 Expiration Date: 25 June 2024
 Revision Date: 19 August 2021


 Dominic Townsend, President

Validity of this certificate is based on the successful completion of the periodic surveillance audits of the management system defined by the above scope and is contingent upon prompt written notification to ABS Quality Evaluations, Inc. of significant changes to the management system or components thereof.
 ABS Quality Evaluations, Inc. 1701 Clay Plaza Drive, Spring, TX 77389, U.S.A.
 Validity of this certificate may be confirmed at www.abs-qe.com/cert_validation.
 Copyright 2011-2021 ABS Quality Evaluations, Inc. All rights reserved.

ABS Quality Evaluations
Certificate Of Conformance
 This is to certify that the Quality Management System of:
New Concept Technology, Inc.
 Necontech de Mexico
 OBRERO MUNDIAL NO. 8 EL LLANO
 Hermosillo, Sonora 83210
 México

(WITH ADDITIONAL FACILITIES LISTED ON ATTACHED ANNEX)
 has been assessed by ABS Quality Evaluations, Inc. and found to be in conformance with the requirements set forth by:
IATF 16949:2016
 The Quality Management System is applicable to:

MANUFACTURE OF STAMPED AND CUSTOM MOLDED COMPONENTS AND ASSEMBLIES EXCLUDING PRODUCT DESIGN, IATF 16949:2016 CLAUSE 8.3

Certificate No: 53291.B
 Effective Date: 02 July 2021
 Expiration Date: 01 July 2024
 Revision Date: 02 July 2021
 IATF No: 0408668


 Dominic Townsend, President

Validity of this certificate is based on the successful completion of the periodic surveillance audits of the management system defined by the above scope and is contingent upon prompt written notification to ABS Quality Evaluations, Inc. of significant changes to the management system or components thereof.
 ABS Quality Evaluations, Inc. 1701 Clay Plaza Drive, Spring, TX 77389, U.S.A.
 Validity of this certificate may be confirmed at www.abs-qe.com/cert_validation.
 Copyright 2011-2021 ABS Quality Evaluations, Inc. All rights reserved.

Page 1 of 2

ABS Quality Evaluations
Certificate Of Conformance
 IATF 16949:2016
ANNEX
 Certificate No: 53291.B
 IATF No: 0408668

New Concept Technology, Inc.
 At Below Facilities:

Facility: 320 Bunker Road
 Emporium, PA 17310-0207
 U.S.A.

Activity: Process Design, Purchasing, Sales, Supplier Management, Quality System Management, & Management Review


 Dominic Townsend, President

Validity of this certificate may be confirmed at www.abs-qe.com/cert_validation.
 Copyright 2011-2021 ABS Quality Evaluations, Inc. All rights reserved.

Page 2 of 2



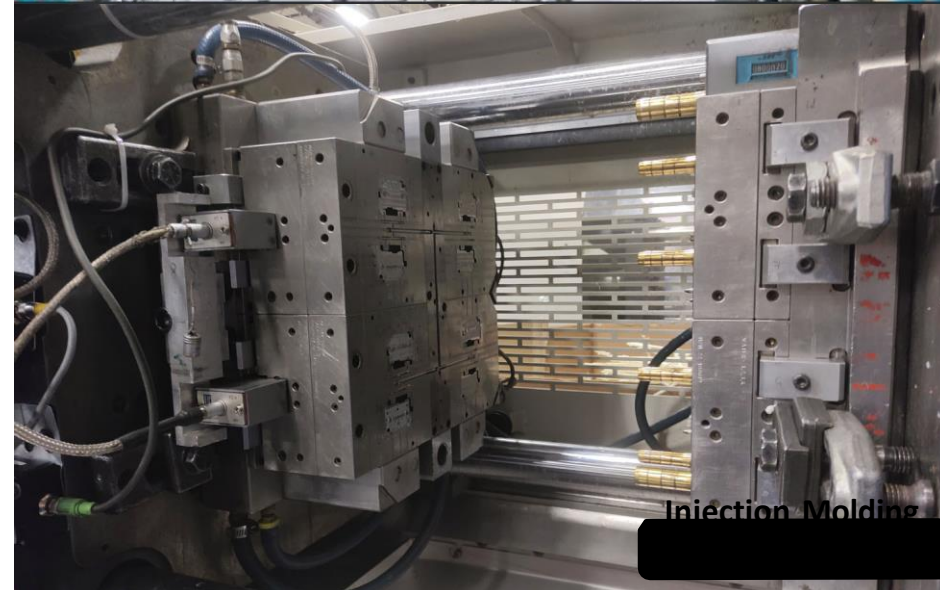
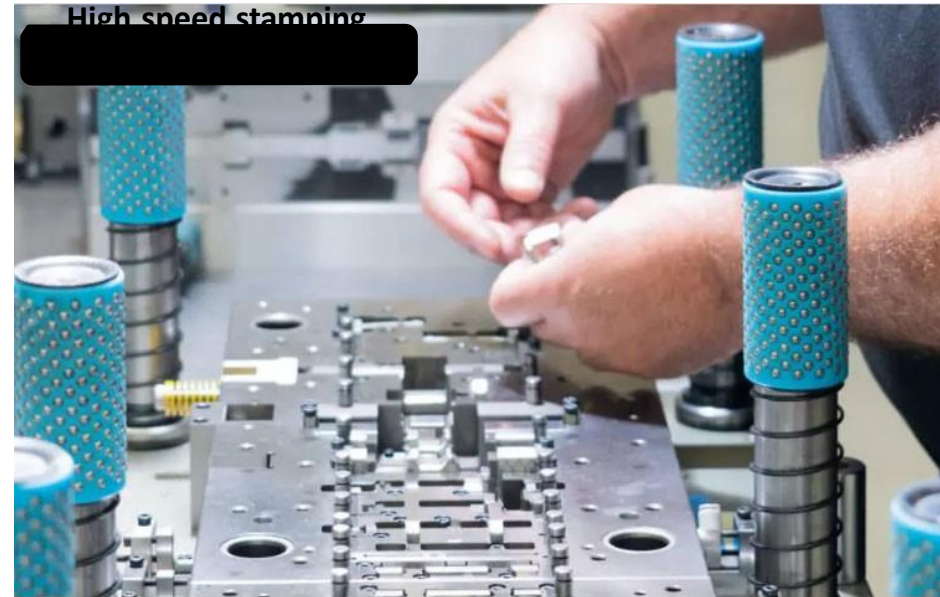
NCT MX INSTALLED CAPABILITIES

High speed Stamping

- Three High speed Stamping Presses 30 ton Bruderer.
- Extended bed stamping press

Injection Molding

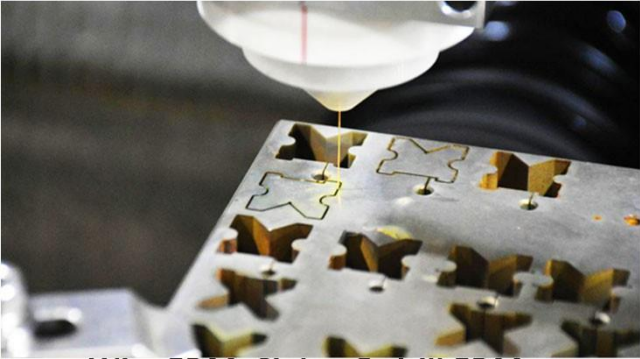
- 22 Molding presses (60-165 Tons)
- 3 Vertical-Verical molding presses (30, 60 & 110 tons)
- Edart RJG cavity sensor system
- Vision system
- 3 Certified Master Molder 1 Engineers



INJECTION MOLDING PRESS-SIDE AUTOMATION



TOOL ROOM CAPABILITIES



Wire EDM, Sinker & drill EDM



Surface grinding



In House Design



Conventional Milling



Graphite CNC Milling



Micro Tig and Laser Welder

METROLOGY CAPABILITIES

- Dimensional studies
- Calibrations

Equipment:

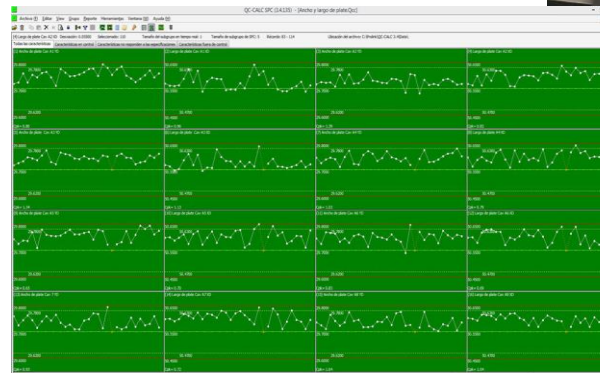
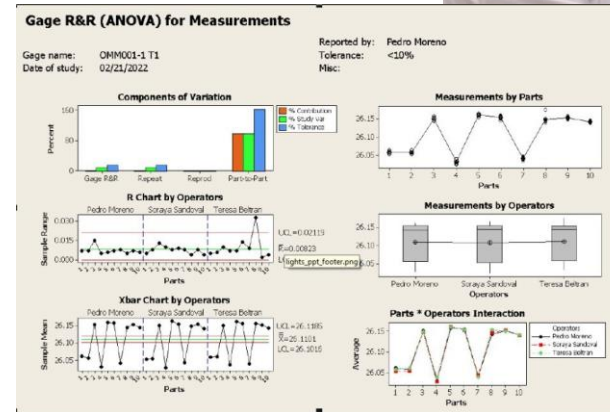
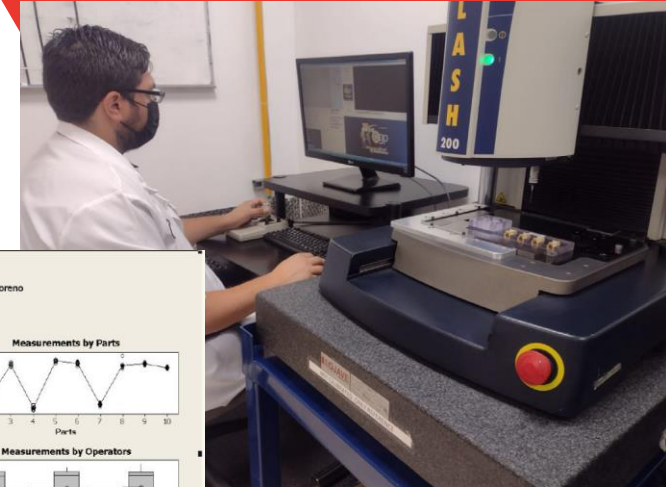
- 2 Smartscope Flash 200 OGP (Touch probe adaptability)
- 1 Image measuring system KEYENCE

Certifications:

- Six Sigma Trained Belts

Software:

- QC-CALC, Statistical Process Control on Real Time
- Minitab (Capability studies, Gage R&R studies)
- Altegra Gage Manager (Gage control & tracking)



SOME OF OUR CUSTOMERS



CONTACT INFO

USA

320 Busser Rd
Emigsville
PA USA17318

717 741 0840 ; 121



DChaisson@newconcepttech.com



MÉXICO

Obrero Mundial #8
Parque industrial Dynatech Col. El Llano
Hermosillo, Sonora, México. C.P. 83210

662 216 4162



customerservice@newconcepttech.com



www.newconcepttech.com/