



**MAN**

**PRECISION**

# ABOUT US

We are a company focused on high precision machining with talents in many industries like aerospace, automotive, heavy machinery, oil and gas, and mining.

Strategically located in Chihuahua, we can provide our services globally with a very competitive cost.



**Aerospace**



**Automotive**



**Heavy  
machinery**



**Oil & Gas**



**Mining**



Vialidad Sacramento #10709  
Complejo COVISA



# SERVICES



**Aerospace  
engineering**



**New  
Capabilities**



**Lean  
Manufacturing**



**Reengineering**



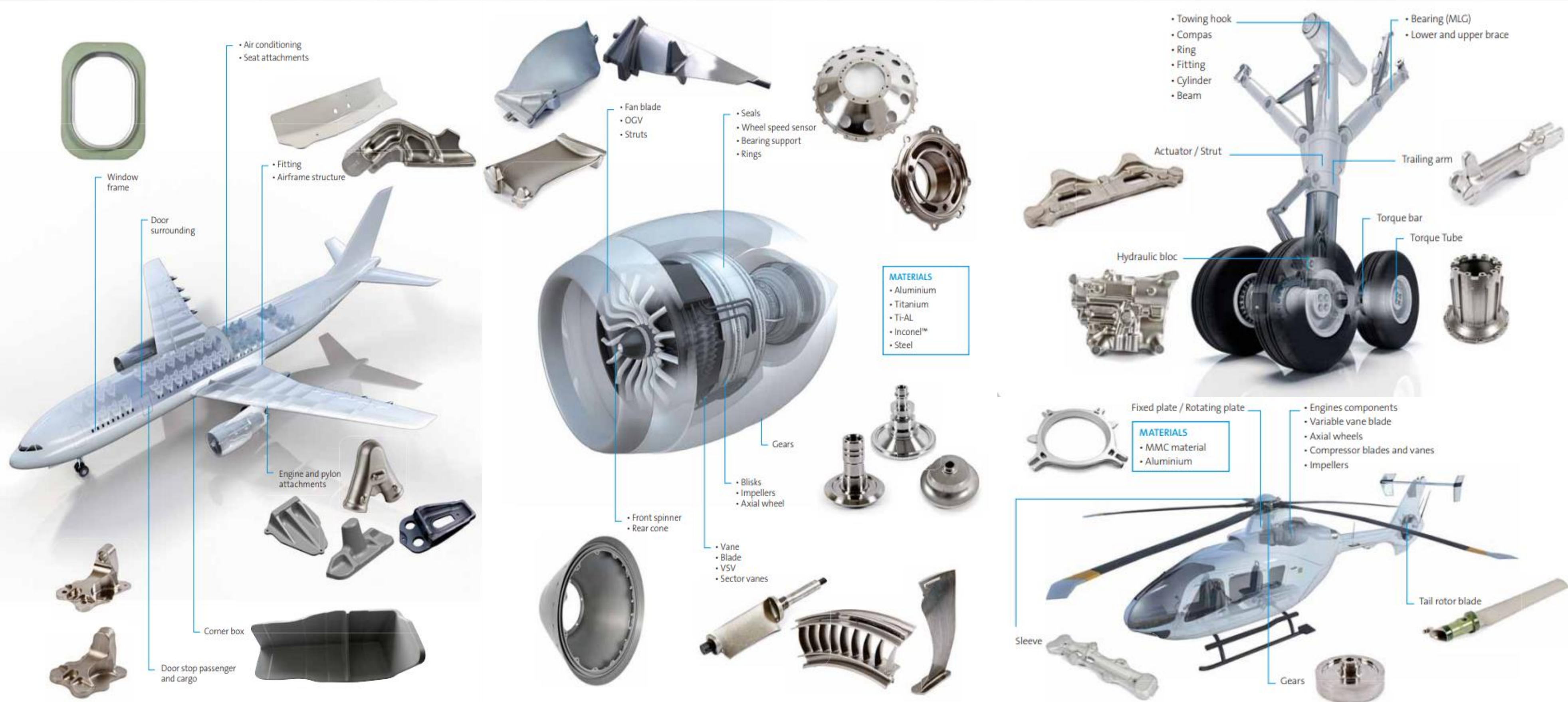
**Quality  
Systems**



**High Precision  
Onboarding**

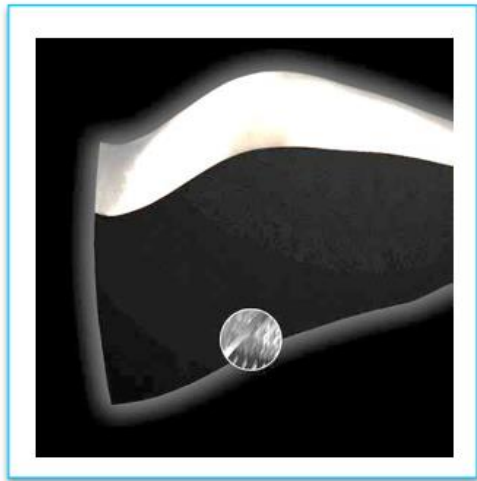
# What can MAN PRECISION manufacture?



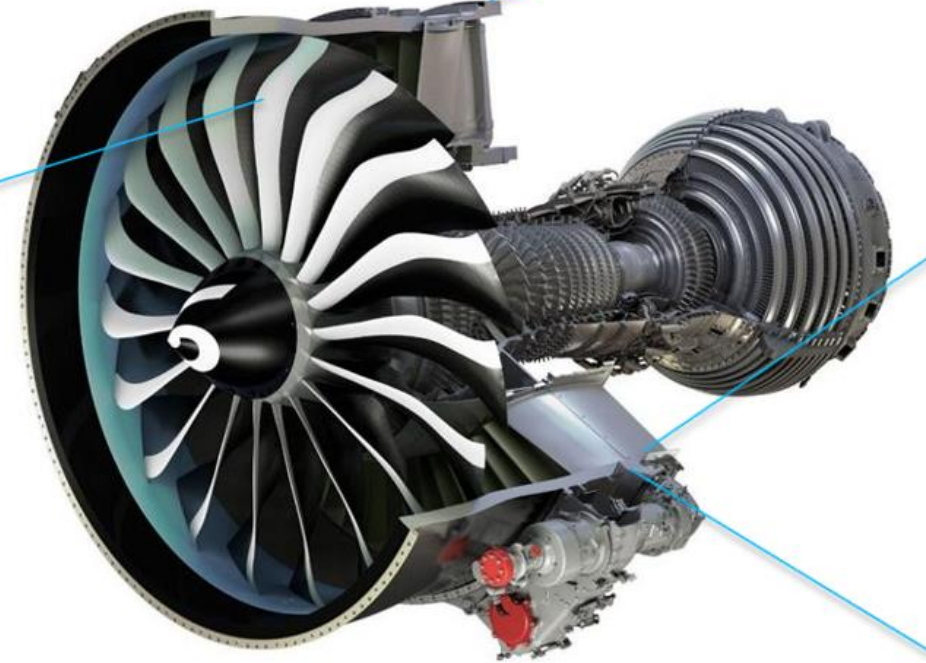


# Aerospace





Metal Leading Edges



YOKE



Mount AGB

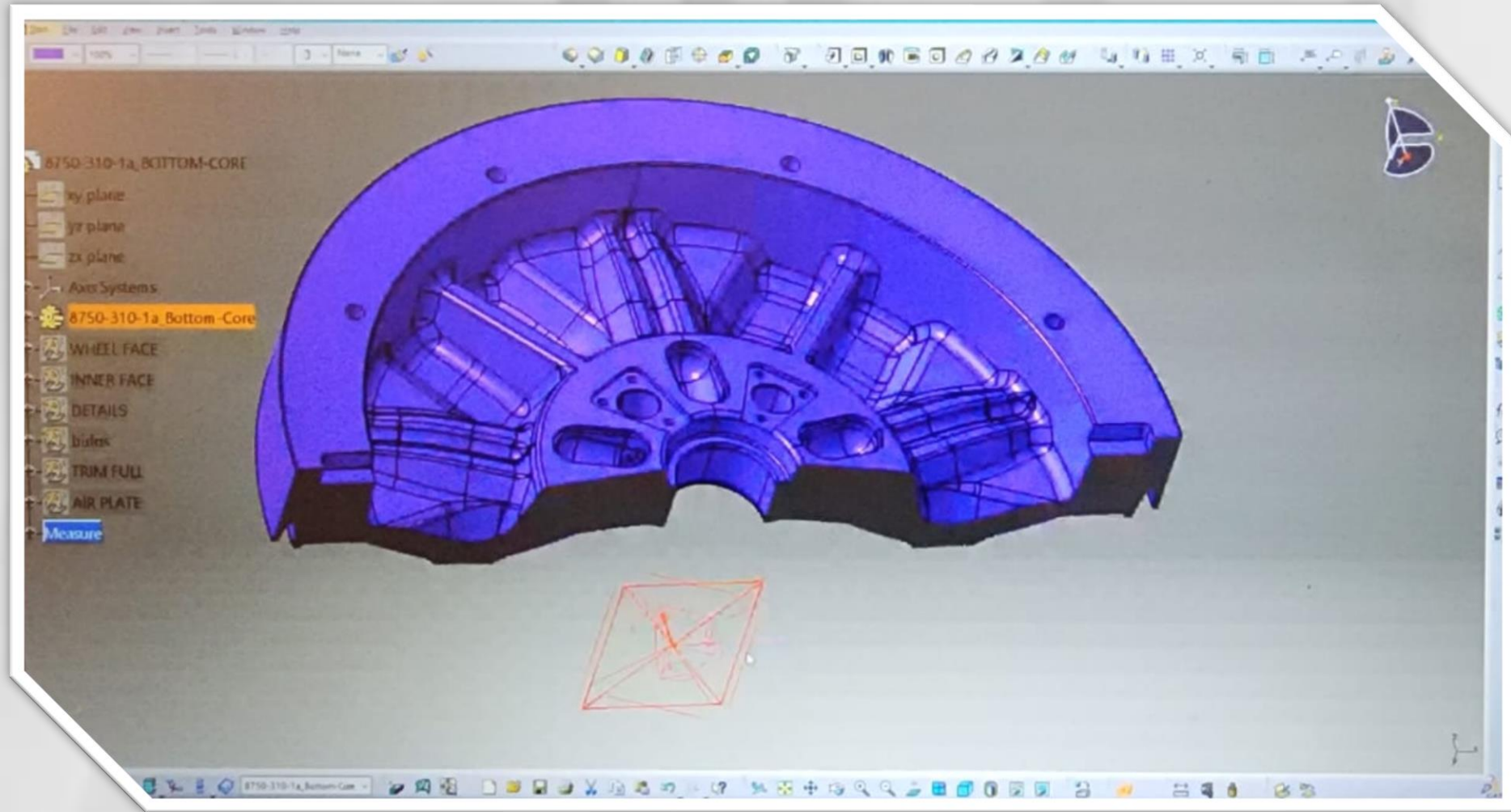


ETGB



# Aerospace

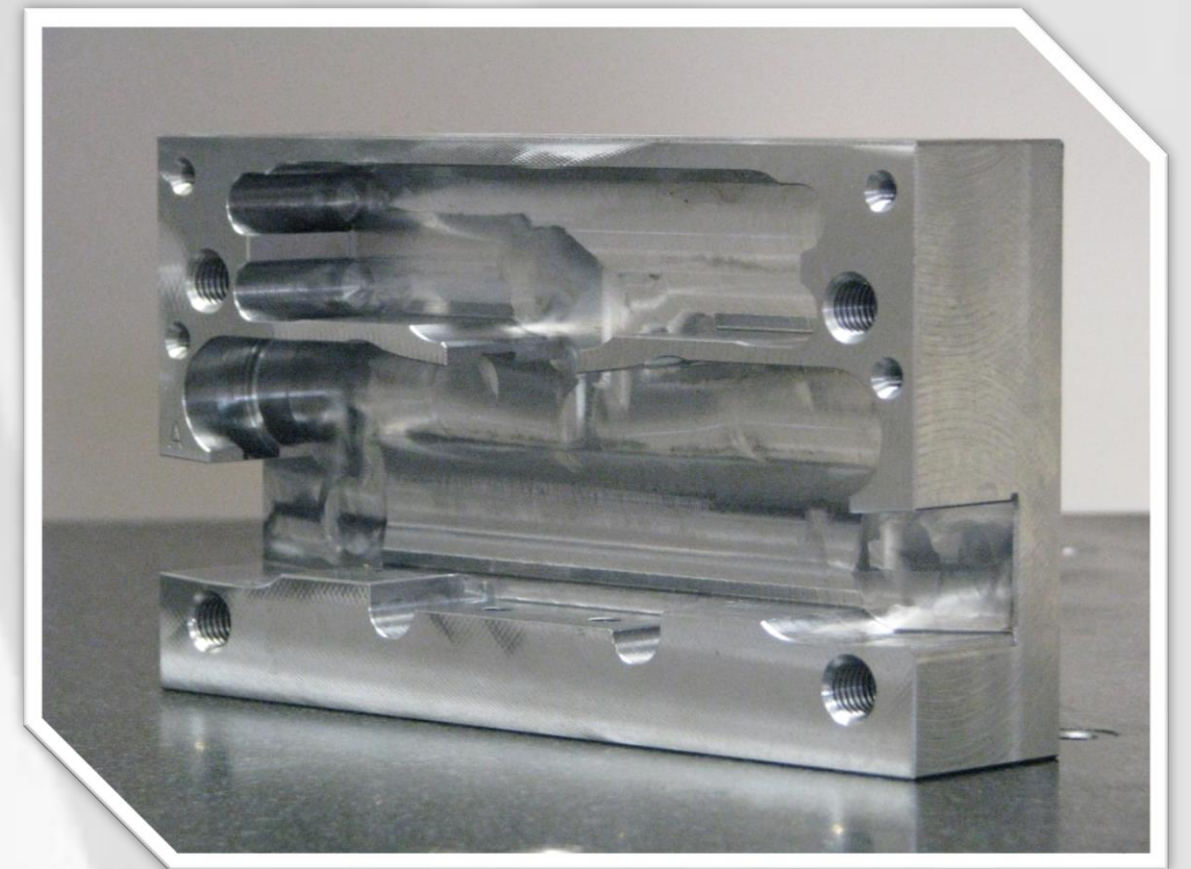
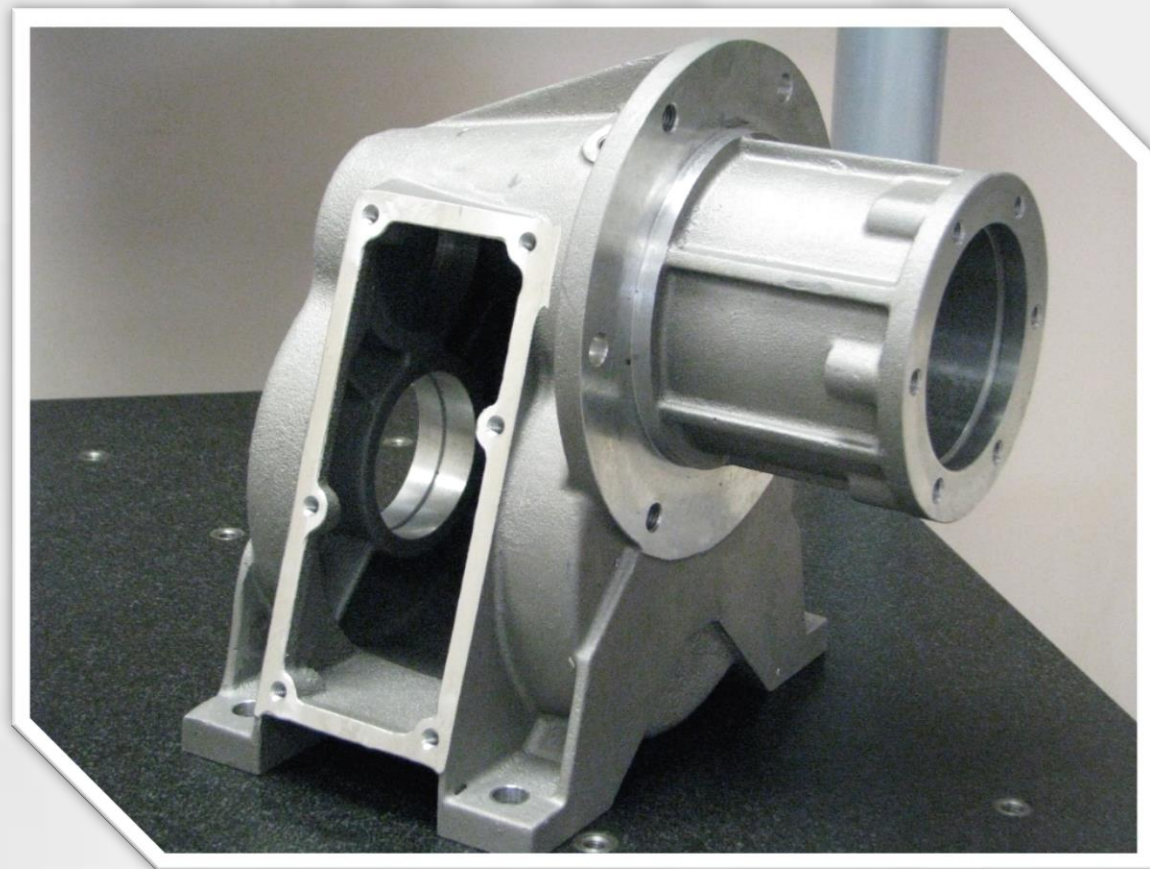
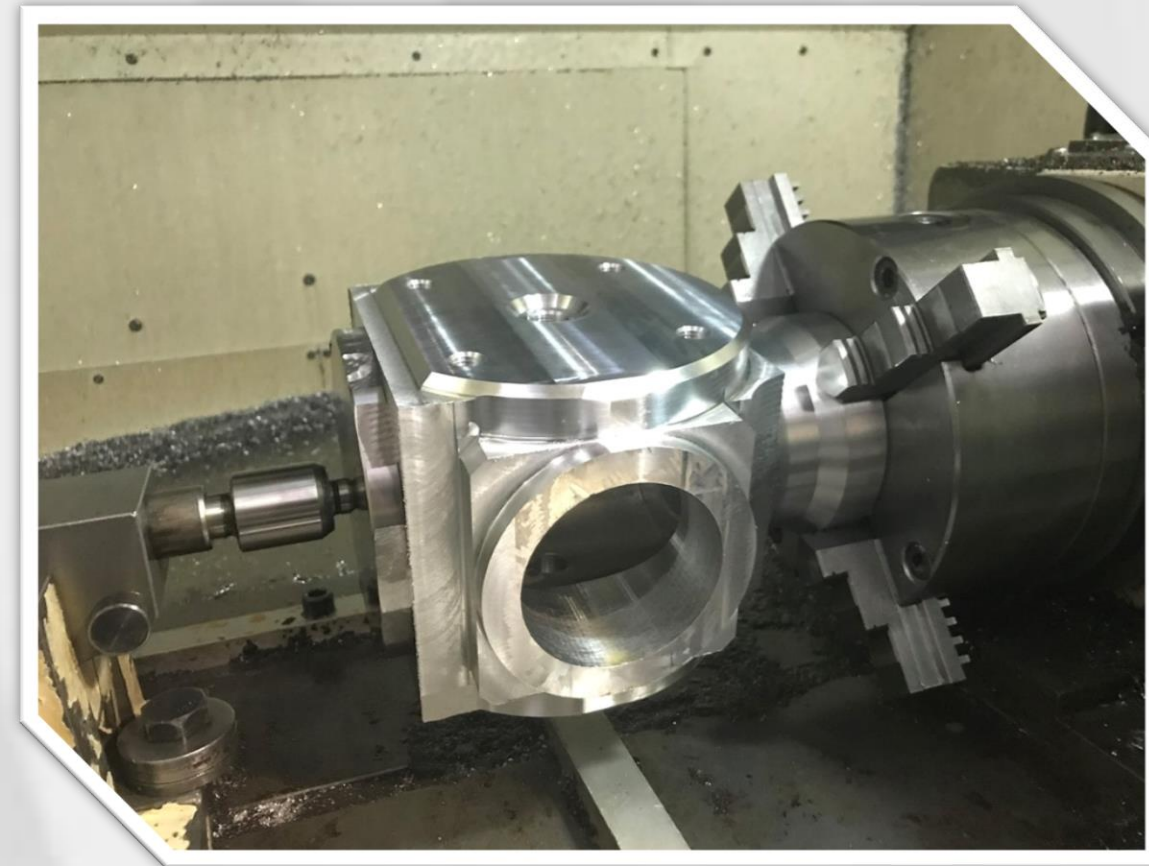




Automotive







Agriculture





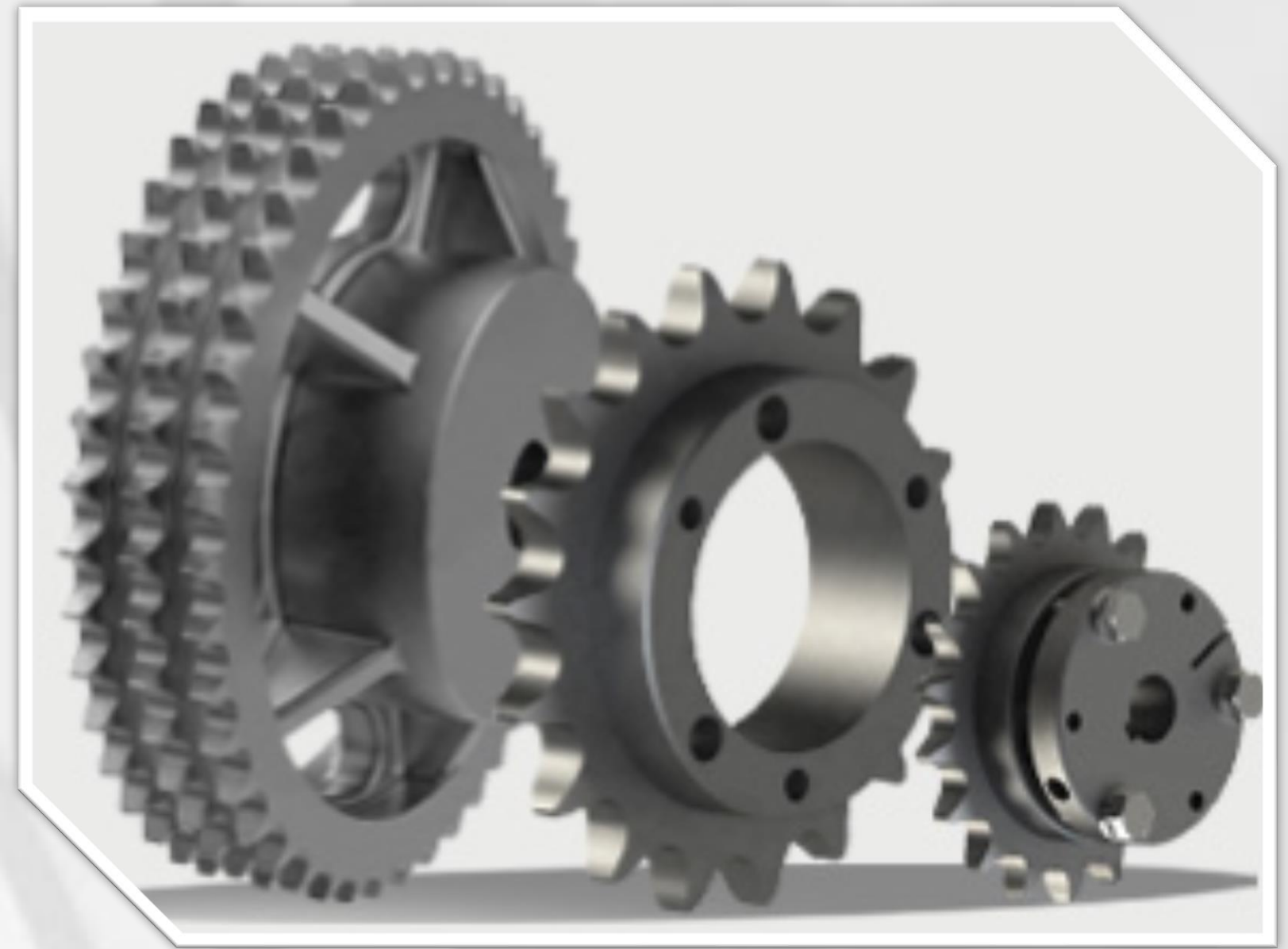
Heavy Machinery





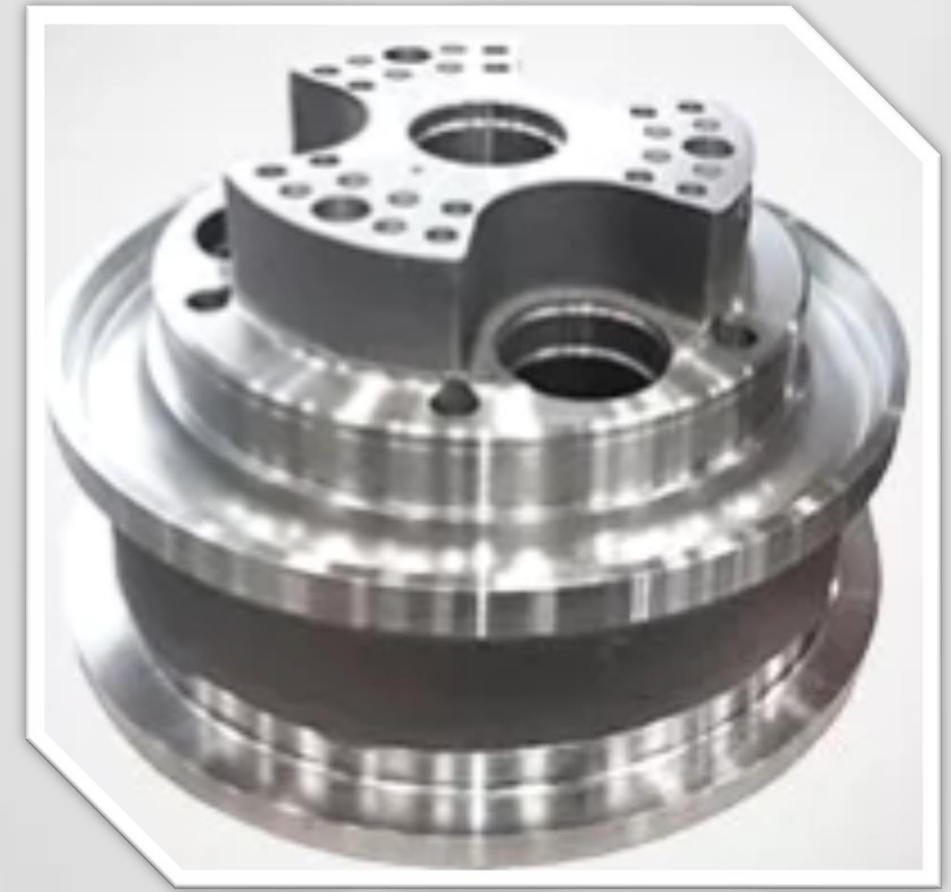
Oil & Gas





Mining





Drill heads



# ASSETS



# TURNING CNC MAZAK SLANT TURN 50N 2 AXIS

- MAZATROL 640T control
- Multi-Part Program Storage
- Heavy Duty 2,200 RPM ATS NCSE 500-155 Hydraulic Chuck 500mm , Chip Conveyor, Thru Turret Coolant, Spindle and axes, Load Monitor
- Capto holding system C5&C6

Mazak	Maching Center	Chuck Size (mm/in)	Swing Diameter	X travel (mm/in)	Z travel (mm/in)
	Mazak ST-50N	φ 500 mm/19"	φ 800 mm/32"	575 mm/ 23"	2032mm / 80"



# MILLING MACHINE CNC OKUMA MU-8000V

## 5 AXIS Continuous

- Okuma OSP300M, Renishaw RMP60 probe,
- Tool setter, Auto tuning for highest kinematic accuracy
- Multi-Part Program Storage, Rigid Tapping
- Heavy Duty 12,000 RPM CAT50 BIG PLUS Spindle
- Tool Changer, Chip Conveyor, Thru Spindle Coolant, Spindle and axes Load Monitor, Collision Avoidance System

Maching Center	Table Size (mm/in)	X travel (mm/in)	Y travel (mm/in)	Z travel (mm/in)
Okuma MU 8000V	φ 800mm/ 31"	914 mm/ 36"	1041 mm/ 41"	584mm / 23"





# ADDITIONAL ACCESSORIES AND EQUIPMENT

- Tool holders
- Cutting Inserts
- Tool tables and cabinets
- Haimer
- Zoller



# MAN Precision certifications

## ISO 9001:2015



## Next: AS9100



# Prospecting Customers

- Crane / Xomox
- John Deere
- Mexion Wheels
- Meins Industries
- Bell Helicopter
- Figeac Aero
- Honeywell Aerospace
- Superior Industries
- Ford
- Daniels
- Emerson – Tecnología de Flujo
- Madisa



Business model: Contract Manufacturing on hard metal parts

Engineering and Design Capability with more than 12 years of experience in CAD / CAM software

KPIS:

- % of On-Time-Delivery: 100%
- Quality Rejection Rate: 2%

Foreign Trade Certification:

- In-Process: IMMEX to ship to the US, Canada, and Europe
- Supplying inside Mexico

Quotation Process:

- Able to quote: (depending on the package size)
  - In-house Machining Services: 3 day
  - Integrated Machining Services: 5 days
  - Integrated Machining + Surface Treatment: 7 days

Commercial Terms:

- Up to 30 days credit
- Incoterms: Defined with the Customer
  - Standards:
    - Domestic: EXW to DAP
    - International: EXW to FCA

# Additional information:



# CONTACT

Javier Barousse

+1 (915) 955-3253

+(52) 614 184-7048

[javier@manprecision.com](mailto:javier@manprecision.com)



Vialidad Sacramento #10709 C.P. 31150

Complejo Vialidad Sacramento

Chihuahua, CHI, MX

Miguel Ramírez Uranga

+(52) 614 161-4018

[miguel@manprecision.com](mailto:miguel@manprecision.com)