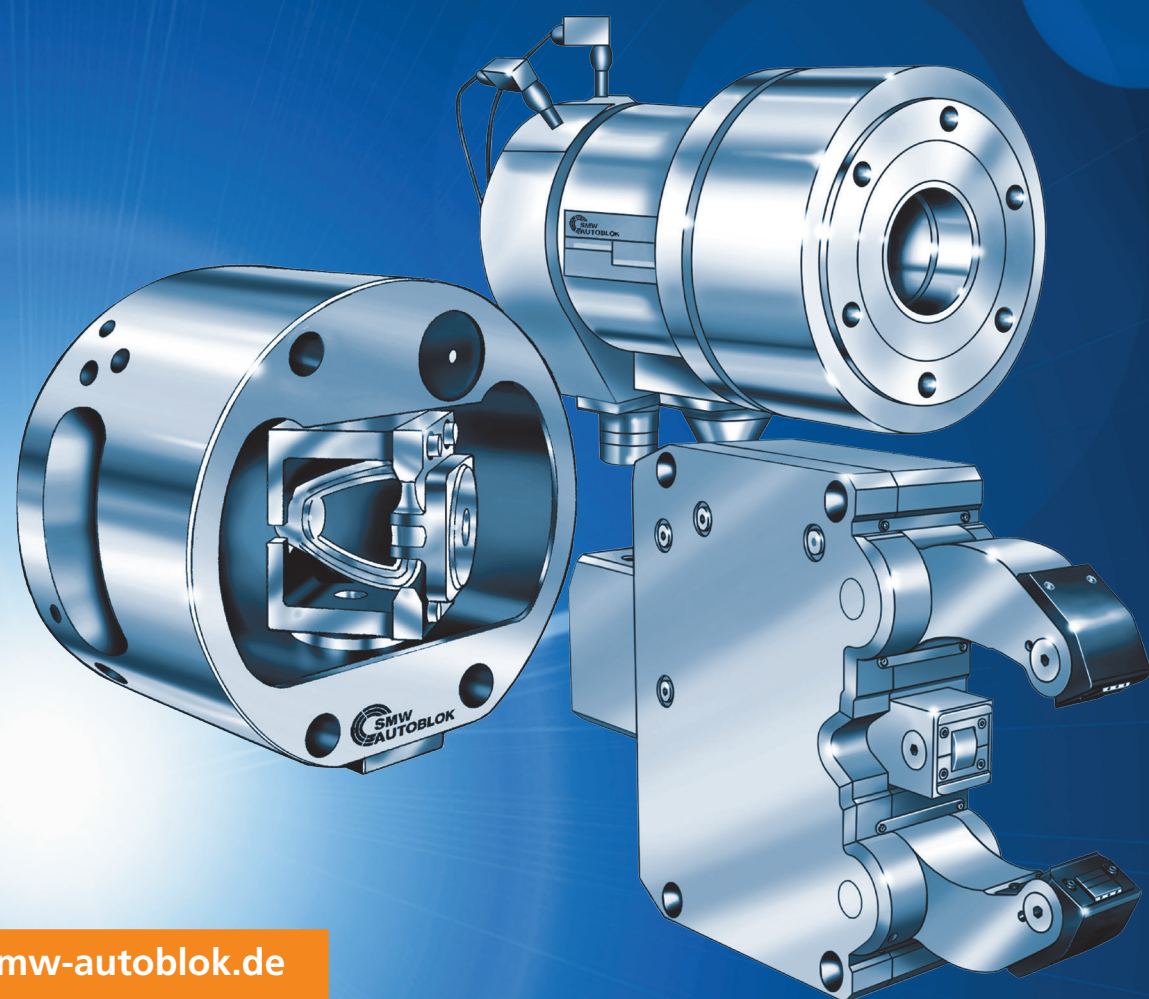


PRODUCT OVERVIEW

Chucks | Steady Rests | Cylinders | Accessories



SMW-AUTOBLOK Spannsysteme GmbH
Postfach 1151 • D-88070 Meckenbeuren
Wiesentalstraße 28 • D-88074 Meckenbeuren
Tel.: +49 (0) 7542 - 405 - 0

Vertrieb Inland: vertrieb@smw-autoblok.de
Fax: +49 (0) 7542 - 3886
Sales International: sales@smw-autoblok.de
Fax: +49 (0) 7542 - 405 - 181



U.S.A.
SMW-AUTOBLOK Corporation
285 Egrid Drive - Wheeling, IL 60090
Tel. +1 847 - 215 - 0591
Fax +1 847 - 215 - 0594
E-mail > autoblok@smwautoblok.com



Japan
SMW-AUTOBLOK Japan Inc.
1-56 Hira, Nishi-Ku
461-Nagoya
Tel. +81 (0) 52 - 504 - 0203
Fax +81 (0) 52 - 504 - 0205
E-mail > japan@smwautoblok.co.jp



China
SMW-AUTOBLOK (Shanghai) Work Holding Co., Ltd.
Building 6, No.72, JinWen Road, KongGang
Industrial Zone, ZhuQiao Town, Pudong District
201323, Shanghai P.R. China
Tel. +86 21 - 5810 - 6396
Fax +86 21 - 5810 - 6395
E-mail > china@smwautoblok.cn



Mexico
SMW-AUTOBLOK Mexico, S.A. de C.V.
Pirineos No. 515-B, Nave 16
Col. Industrial Benito Juarez
Micro Parque Industrial Santiago
Queretaro, Qro. C.P. 76130
Tel. +52 (442) 209 - 5118
Fax +52 (442) 209 - 5121
E-mail > smwmex@smwautoblok.mx



India
SMW-AUTOBLOK Workholding Pvt. Ltd.,
Plot No. 4, Weikfield Industrial Estate,
Gat No. 1251, Sanaswadi, Tal - Shirur,
Dist - Pune. 412 208
Tel. +91 2137 - 616 974
Fax +91 2137 - 616 972
E-mail > info@smwautoblok.in



Brazil
SYSTEC METALÚRGICA LTDA
R. Luiz Brisque, 980
13280-000 - Vinhedo - SP
Tel. +55 (0) 193 886 - 6900
Fax +55 (0) 193 886 - 6970
E-mail > systec@systecmetal.com.br



Argentina
SMW-AUTOBLOK Argentina
Rio Pilcomayo 1121 - Bella Vista
RA - 1661 Bella Vista Buenos Aires
Tel. +54 (0) 1146 - 660 603
Fax +54 (0) 1146 - 660 603
E-mail > autoblok@ciudad.com.ar



AUTOBLOK s.p.a.
Via Duca D'Aosta n.24
Fraz. Novaretto
I-10040 Caprie - Torino
Tel. +39 011 - 9638411
Tel. +39 011 - 9632020
Fax +39 011 - 9632288
E-mail > info@smwautoblok.it



France
SMW-AUTOBLOK
17, Avenue des Frères Montgolfier - Z.I. Mi-Plaine
F-69680 Chassieu
Tel. +33 (0) 4 - 727 - 918 18
Fax +33 (0) 4 - 727 - 918 19
E-mail > autoblok@smwautoblok.fr



Great Britain
SMW-AUTOBLOK Telbrook Ltd.
7 Wilford Industrial Estate
Ruddington Lane, Wilford
GB-Nottingham, NG11 7EP
Tel. +44 (0) 115 - 982 1133
E-mail > info@smw-autoblok-telbrook.co.uk



Spain
SMW-AUTOBLOK IBERICA, S.L.
Ursalto 10 - Nave 2, Pol. 27 - Mateo Gaina
20014 San Sebastián (Guipúzcoa) (Spain)
Tel.: +34 943 - 225 079
Fax: +34 943 - 225 074
E-mail > info@smwautoblok.es



Russia
SMW-AUTOBLOK Russia
B.Tulskaya str., 10, bld.3, off.323,
115191 Moscow (Russia)
Tel. +7 495 -231-1011
Fax +7 495 -231-1011
E-mail > info@smw-autoblok.ru



Taiwan
AUTOBLOK Company Ltd.
NO.6, SHUYI RD., SOUTH DIST.,
TAICHUNG, TAIWAN
Tel. +886 4-226 10826
Fax +886 4-226 12109
E-mail > taiwan@smwautoblok.tw



Czech Republic | Slovakia
SMW-AUTOBLOK s.r.o.
Merhautova 20
CZ - 613 00 BRNO
Tel. +420 513 034 157
Fax +420 513 034 158
E-mail > info@smw-autoblok.cz



Sweden | Norway
SMW-AUTOBLOK Scandinavia AB
Kasernvägen 2
SE - 281 35 Hässleholm
Tel. +46 (0) 761 420 111
E-mail > info@smw-autoblok.se



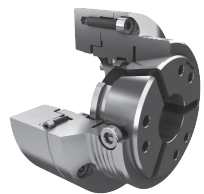
Korea
SMW-AUTOBLOK KOREA CO., LTD.
1108 ho, Baeksang Startower 1st,
65, Digital-ro 9-gil, Geumcheon-gu
Seoul, ROK-08511, Korea
Tel. +82 2 6267 9505
Fax +82 2 6267 9507
E-mail > info-korea@smw-autoblok.net

Subject to typo's, errors and technical changes. 09.2017

www.smw-autoblok.de

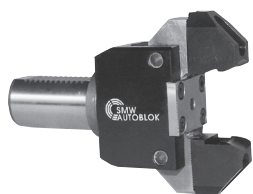
Collet chucks

KSZ-MB,-DZN,-AZN,-NZN,-AZL



- Collet chucks
- Collet quick change
- High gripping force and repeatability
- Pull down effect or axial fixed position clamping
- For high speed
- Air sensing

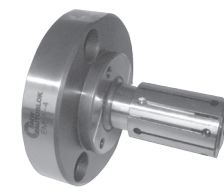
GF 80



- Bar pulling chuck
- Spring actuation
- For stationary outside clamping
- Suitable for workpiece handling

Mandrels

EM-A,-B



- Power or hand operated expanding mandrels
- Clamping range 14,7 - 130 mm
- Large expansibility 0,5 - 2 mm depending on size
- Very rigid design

EM-S



- Power operated expanding mandrels
- Clamping range 18 - 105 mm
- Large expansibility 0,8 - 1,2 mm depending on size
- Hardened and vulcanised sleeves, quick change
- Very rigid design

Rotating cylinders

SIN-S,-HL,-L | CSN



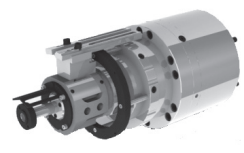
- Rotating hydraulic/pneumatic cylinders
- Central bore for air, coolant or oil
- Linear stroke control/proximity switches
- SIN-HL:** High-low gripping force clamping
- SIN-L:** Long stroke
- CSN:** Pneumatic

VNK-T2 | VSG



- Rotating hydraulic cylinders
- Linear stroke control/proximity switches
- CP-3 unit for rotary union
- VNK-T2:** Through hole up to 127 mm
- VSG:** Extra large through hole up to 204 mm

DCN | DCU | DCR | DCE | ZHVD-SZ



- Double piston, rotating hydraulic cylinders
- Linear stroke control/proximity switches
- Central bore for air, coolant or oil
- DCN, DCU, DCR:** Modular system for different piston strokes
- DCE:** 2 x same piston area
- ZHVD-SZ:** for shaft chucks type W

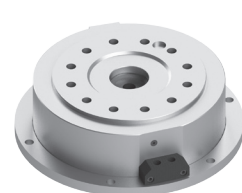
LPS-X | LPS-XS | LPS-NT



- Linear positioning system for clamping cylinders
- Analog or digital output signal
- Measuring range:
LPS-XS, LPS-XS io Link = 16 mm
LPS-X, LPS-X io Link = 50 mm
LPS-NT = 100 mm

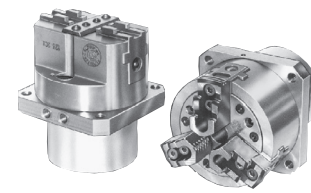
Stationary cylinder | chuck unit

USC



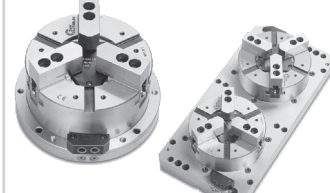
- Pneumatic static cylinder
- Unit with static cylinder
- With stroke control
- Can be equipped with different types of chucks
- Sizes: 140 - 260 mm

US-CL | US-A | US



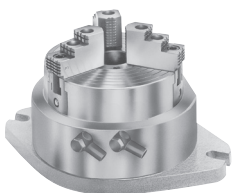
- Hydraulic or pneumatic stationary chucks with integrated cylinder
- With and without through-hole
- 2, 3 or 4 jaws
- US:** large Ø, normal or long stroke
- Sizes: 80 - 800 mm

HB-D,-C | PB(I)-D,-C | M2-PB



- Hydraulic or pneumatic stationary chucks with integrated cylinder
- 2 or 3 jaws
- PB(I)-D,-C:** With manifold for air supply
- M2-PB:** Multiple chucks on fixtures
- Sizes: 130 - 315 mm

STP



- Stationary chuck with built in pneumatic cylinder
- 3 jaws
- With through-hole
- Sizes: 125 - 280 mm

Chuck switching system | Jaws | Gripping force meter | Accessory

CCS



- Chuck switching system for all common chucks
- Automatic coupling of chuck in a single actuation
- Standardized adapters
- Large through hole
- Manual, central actuation

Jaws | Adapters | Grippers



- Standard- and special jaws and T-nuts for all commercial chucks, soft and hard version
- Mounting adapters on short taper spindle noses, direct or indirect mounting
- Exchangeable grippers

GFT-X 4.0



- Gripping force tester multifunctional
- Dynamic or static gripping force measuring
- Speed measuring
- Wireless data transfer via bluetooth
- Assistance systems: Manuals, Jaw Finder, Chuck Finder, Technical calculations

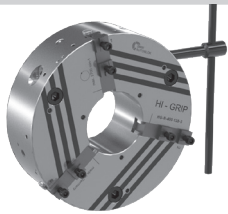
Grease



- Grease for manual and power chucks
- Special grease for sealed chucks included in proofline® series
- Important for safe operation and maintenance

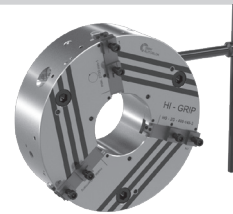
Manual chucks

HG-N | HG-NB



- Wedge bar manual chuck
- Quick jaw change
- 3 jaws
- Jaw system SMW, Straight serration
- HG-NB:** Wide master jaws
- Sizes:** 160 - 1000 mm

HG-2G | HG-B-2G



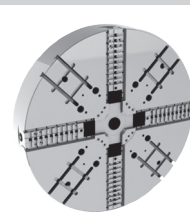
- Wedge bar manual chuck
- Quick jaw change
- 3 jaws
- Jaw system SMW, Straight serration
- Mechanic sealed, low maintenance
- HG-B-2G:** Wide master jaws
- Sizes:** 400 - 1000 mm

HG-F



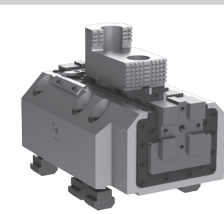
- Wedge bar manual chuck
- Quick jaw change
- 3 jaws
- Jaw system Forkardt, Inclined serration
- Sizes:** 160 - 400 mm

PTF



- 4 jaws manual face plate
- Closed center
- Manual clamping
- Radial setting of jaws
- Sizes:** 1000 - 2000 mm

JBX



- Manual jaw box
- Standard mounting dimensions or with semi-finished body
- Accessory for face plates or chucks
- Internal or external clamping

Closed center power chucks

AN-D,-M | AL-D,-M | AN-C



- Wedge hook chucks closed center
- 2 or 3 jaws (4 jaws only Ø 400)
- AL-D,-M:** Extra long stroke
- Sizes:** 125 - 400 mm

AP-D,-M,-C | APL-D,-M,-C



- Wedge hook chucks closed center
- Proofline: fully sealed | low maintenance
- 3 jaws
- APL-D,-M,-C:** Extra long stroke
- Sizes:** 170 - 1000 mm

NT-D,-M,-C | NTL-D,-M,-C



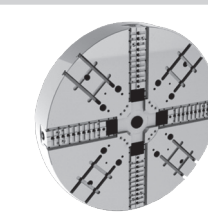
- Wedge hook chucks closed center
- Centrifugal force compensation
- Proofline: fully sealed | low maintenance
- 3 jaws
- NTL-D,-M,-C:** Extra long stroke
- Sizes:** 170 - 1000 mm

IN-D | IN-C | IL-D | IL-C



- Wedge hook chucks closed center
- Sealed against swarf and chips
- 3, 4 or 6 jaws
- IL-D,-C:** Extra long stroke
- Sizes:** 500 - 1600 mm

IR-C



- Wedge hook chucks closed center
- Sealed against swarf and chips
- 3, 4 or 6 jaws
- With individual jaw regulation
- Sizes:** 1000 - 2500 mm

RAN



- Wedge hook chucks closed center
- 3 jaws
- Pull-down effect of inclined master jaw movement
- Sizes:** 160 - 400 mm

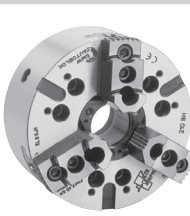
CL-C | CL-D



- Wedge hook chucks closed center
- 2 jaws
- Extra long stroke
- Sizes:** 80 - 315 mm

Open center power chucks

BH-D,-M | BHD(M)-FC



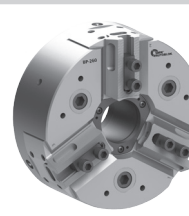
- With large through hole
- Chuck body and internal parts case hardened
- 2, 3 or 4 jaws
- FC:** Centrifugal force compensation
- Sizes:** 130 - 800 mm

AG-2G,-C,-M



- With large through hole
- Proofline: fully sealed | low maintenance
- Centrifugal force compensation
- 3 jaws
- Sizes:** 225 mm

BP-D,-M,-C



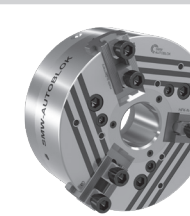
- With large through hole
- Proofline: fully sealed | low maintenance
- 3 jaws
- Sizes:** 220 - 320 mm

BB-D,-M



- With extra large through hole
- Chuck body and internal parts case hardened
- 3 jaws
- Sizes:** 140 - 315 mm

HFKN-D,-M,-C



- Wedge bar chuck with open center
- Chuck body and internal parts case hardened
- 3 jaws
- Sizes:** 110 - 500 mm

Quick jaw change power chucks

KNCS-N | KNCS-NB,-NBX



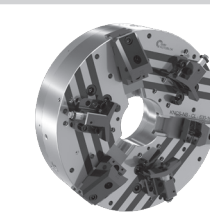
- Large through hole
- Jaw safety interlock
- 2 and 3 jaws
- KNCS-NB:** Wide master jaws
- KNCS-NBX:** Extra large through hole
- Sizes:** 140 - 1000 mm

KNCS-2G



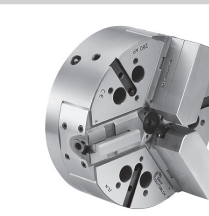
- Large through hole
- Protection against chips and swarf
- Jaw safety interlock
- 3 jaws
- Sizes:** 170 - 630 mm

KNCS-NB-CL



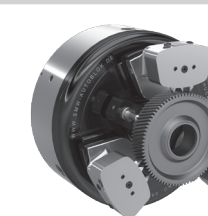
- Large through hole
- Integrated fine adjustment
- Chuck body and internal parts case hardened
- Jaw safety interlock
- 3 jaws
- Sizes:** 630 mm

AP-RC,-RD | NT-RC,-RD



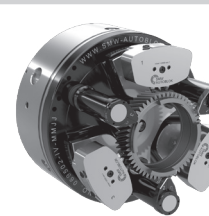
- Quick change | closed center
- Chuck body and internal parts case hardened
- Proofline: fully sealed | low maintenance
- 3 jaws
- NT:** Centrifugal force compensation
- Sizes:** 170 - 400 mm

D | D-Plus



- Quick change
- O.D. or pitch line clamping
- Centrifugal force compensation
- Proofline: fully sealed | low maintenance
- 3 jaws
- D-Plus:** with through hole
- Sizes:** 210 - 315 mm

D-Kombi



- Quick change
- O.D. or pitch line clamping
- Additional axial clamping
- Centrifugal force compensation
- Proofline: fully sealed | low maintenance
- 3 jaws
- Sizes:** 210 - 400 mm

D-Vario



- Modular system
- Fine adjustment of the center line
- Quick positioning of jaws for gears with different number of teeth
- Proofline: fully sealed | low maintenance
- 3 jaws
- Sizes:** 215 mm

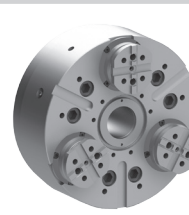
Pull-down chucks | Indexing chucks | Shaft chucks | Compensating chucks | 6 jaw 2+2+2 chucks

TSF-C,-RM,-CP | TSR-C,-RM,-CP



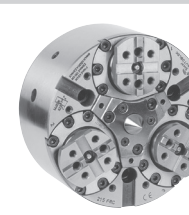
- Pull-down chuck with active pull-down
- Self centering | compensating clamping
- Floating or rigid jaws
- Proofline: fully sealed | low maintenance
- 2 or 3 jaws
- Quick jaw change = pallet system (RM)
- Sizes:** 135 - 650 mm

TSB



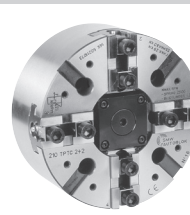
- Pull-down chuck with active pull-down
- With through hole
- Self centering | compensating clamping
- Floating or rigid jaws
- Proofline: fully sealed | low maintenance
- 3 jaws
- Sizes:** 220 - 330 mm

FRC-N | FRS



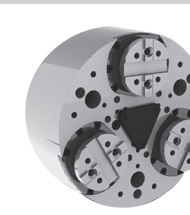
- Pull-down chuck with passive pull-down
- Self centering | compensating clamping
- Rigid jaws
- Proofline: fully sealed | low maintenance
- Highest torsion rigidity
- 3 jaws
- Sizes:** 215 - 365 mm

TPT-C,-RC



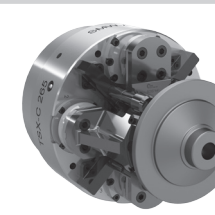
- 2+2 jaw chucks closed center
- Self centering independent
- 2+2 jaw movement
- TPT-RC:** Individual jaw regulation
- Sizes:** 210 - 2000 mm

TX-C | TX-RV



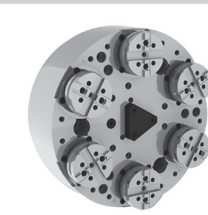
- Pull-down chuck with active pull-down
- Self centering, rigid jaws
- Centrifugal force compensation
- 3 jaws
- Proofline: fully sealed | low maintenance
- TX-RV:** Quick change
- Sizes:** 170 - 530 mm

TSX-C



- 2+2 Pull-down chuck with active pull-down
- 2 independent self-centering jaw drives, thanks to the 2 internal wedges
- Centrifugal force compensation
- Proofline: fully sealed | low maintenance
- Sizes:** 265 - 315 mm

TEF-C



- 2+2+2 Pull-down chuck with active pull-down
- Self centering with floating jaws
- Centrifugal force compensation
- 6 jaws (2+2+2)
- Proofline: fully sealed | low maintenance
- Sizes:** 260 - 850 mm

SJL



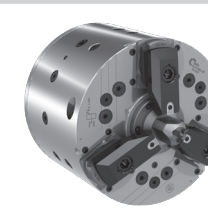
- 2+2+2 equalizing chucks
- Jaws equalising as a pair, mechanism lockable, self centering
- Centrifugal force compensation
- 6 jaws (2+2+2)
- Proofline: fully sealed | low maintenance
- Sizes:** 225 - 400 mm

IEP-D,-C



- 2+2+2 equalizing chucks
- Self centering
- Centrifugal force compensation
- 6 jaws (2+2+2)
- Proofline: fully sealed | low maintenance
- Sizes:** 400 - 1600 mm

W | GSA



- Shaft chucks with face driver
- Retractable jaws
- Proofline: fully sealed | low maintenance
- W:** Self centering or compensating clamping - quick change
- GSA:** Compensating clamping
- Sizes:** 200 - 480 mm

AXN



- Automatic indexing chuck
- Hydraulic clamping and indexing
- Divisions: 4 x 90°/ 8 x 45°/ 3 x 120°/ 6 x 60°
- Proofline: fully sealed | low maintenance
- 2 jaws
- Sizes:** 210 - 1250 mm

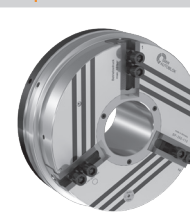
ACS



- Column chucks
- Self centering
- For external or internal clamping
- 3 and 6 jaws
- Sizes:** 110 - 450 mm

Front-end chucks

SP | SP-ES | SP-L



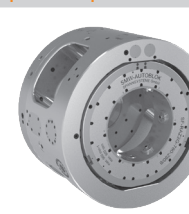
- Pneumatic front-end chucks
- Extra large through hole
- 3 jaws
- SP-ES:** With rapid and clamping stroke
- SP-L:** Long jaw stroke
- Sizes:** 125 - 350 mm

Big Bore | Big Bore 2G



- Extra large through hole - **BIG BORE**
- ES | EXL:** With rapid | clamping stroke
- BB-AZG:** Self centering | compensating
- BB-FAZG:** 6 jaws (3+3)
- BB-SC:** Spring clamp
- Proofline: fully sealed | low maintenance
- Sizes:** 400 - 1020 mm

SF-RZ | SF-RAZ | SF-RAZ 2G



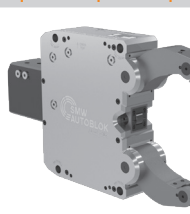
- Hydraulic ring indexing chuck
- 3 or 6 jaws
- Large evacuation windows for easy chip flow
- Fully automatic and controlled indexing
- SF-RAZ2G:** Very compact design
- Sizes:** 400 - 1050 mm

HYND-S | HYDL-S



- Hydraulic front-end chucks
- Hydraulic oil supplied through the machine spindle or tube bundle
- 3 or 4 jaws
- HYDL-S:** Long stroke
- Sizes:** 180 - 800 mm

SLU-X | SLU(B) | SLU-A | SLUB-A



- Basic and Standard Steady rests line
- Stroke control | Safety valve
- Central lubrication
- Port for compressed air
- SLU-X:** Proofline® - steady rest
- SLUB:** With side mounted cylinder
- SLU-A:** Additional pivoting upper arm

SR | SRA



- Premium Steady rests line
- Integrated coolant | air flush chip guard
- Stroke control | Safety valve
- Coated body
- Proofline: fully sealed | low maintenance
- SRA:** Additional pivoting upper arm

SR-CL



- Premium Steady rests line
- Integrated fine adjustment
- Integrated coolant | air flush chip guard
- Stroke control | Safety valve
- Coated body
- Proofline: fully sealed | low maintenance

K | KA



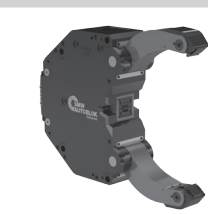
- Premium Steady rests line - Compact
- Integrated coolant | air flush chip guard
- Stroke control | Safety valve
- Coated body
- KA:** Double guided center arm to carry heavy loads
- Proofline: fully sealed | low maintenance

KLU | KLU-A



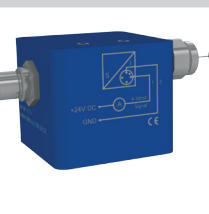
- Premium Steady rests line - Narrow
- Narrow arms for crankshafts
- Integrated coolant | air flush chip guard
- Stroke control | Safety valve
- Coated body
- Proofline: fully sealed | low maintenance

RX



- Premium Steady rests line
- Extra compact design
- Patented double cam system
- Integrated coolant | air flush chip guard
- Stroke control | Safety valve
- Coated body
- Proofline: fully sealed | low maintenance

SCU



- Linear stroke control unit for SMW-AUTOBLOK steady rests
- Avoids collision
- Time saving by only partial opening of the steady rest
- Protection class IP 66
- Output signal 4-20 mA or 0-10 V

SRG | SRG-B



- Grinding steady rest
- Horizontal and vertical fine adjustment
- Retractable steady rest arms
- Port for compressed air
- Monitoring via proximity switches
- Also ideal for follow down grinding

Self-centering Steady Rests for turning and grinding