

WELCOME



TIMS

TEKMART
INTEGRATED
MANUFACTURING
SERVICES

WHERE GREAT PRODUCTS TAKE SHAPE

Overview of Capabilities

WWW.TEKMARTIMS.COM

Company Snapshot

Revenue Growth 2013 to 2023

- Stable growth annually 2013 to 2018
- Weathered challenges in 2019-2020
- Financially stable

Markets Served

- 40% Automotive*
- 30% Appliances
- 30% Recreational (ATV), Electronics

Clients & Programs

- OEMS' and Tier One
- Healthy business distribution
- New 5 year programs 2028

Expansion

- New Plants in TJ and Juarez
- Acquired Power-Sonic Tijuana 2022 & Brenta in 2020 Juarez
- New Facility in Juarez 2024

TIMS NUMBERS

Facilities

3

Produced
parts/month

3.9M

IMM

+120

Active PNs

500 FG

Monthly Resin
Consumption

900K Lbs

RESINS PNs

60

Components +
packaging PNs

400

MOLDS

375

Head count

600

AREA SQF

580K

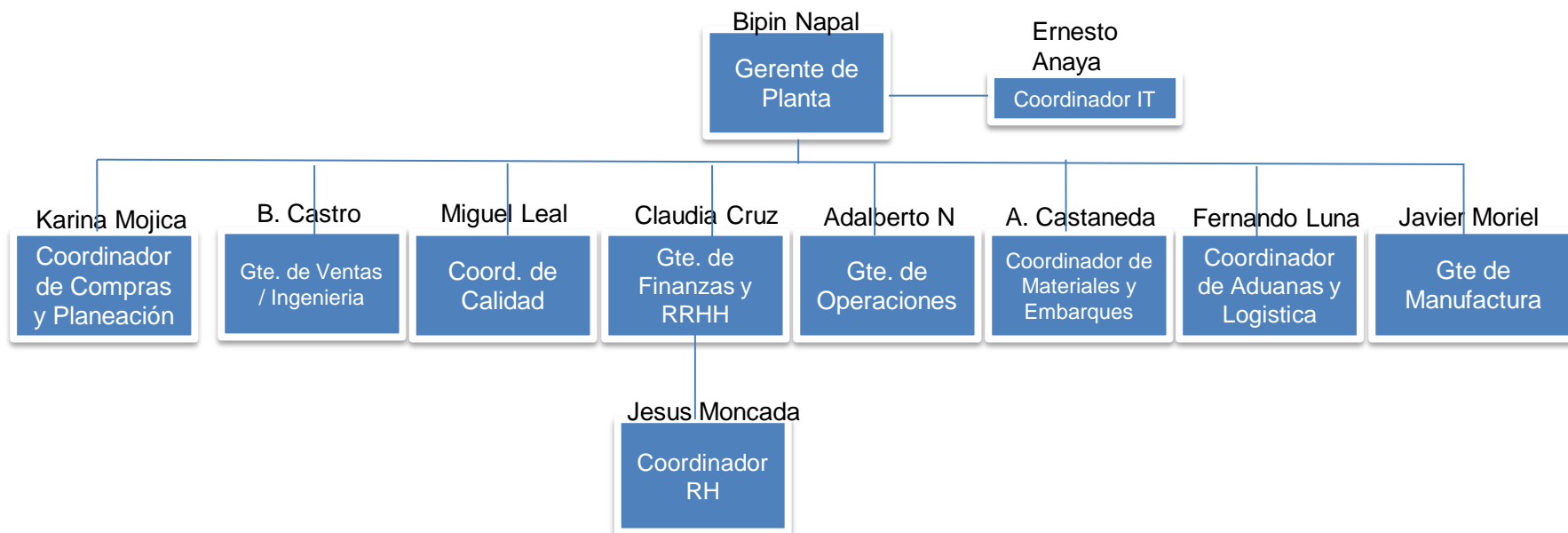
Shifts

3 _{24/5}

Assemblies PNs

45

TIMS CORE TEAM



TIMS Facilities



- Juarez main plant 350,000 Sq. Ft. Texas Border
- Juarez satellite plant 30,000 “ “ Texas Border
- Tijuana plant 60,000 “ “ San Diego border



- +100 Injection machines ranging from 100 to 3000 tons.
- Fully automated material distribution system.
- Silos availability
- Fully automated robot solutions & multiple 30 tons overhead crane.

NEW Plant in JUAREZ Q4 2024

851 Calle Fulton Parque Ind. Antonio J. Bermúdez Ciudad Juarez



- ✓ 40 IMM 100 to 1500 Tons
- ✓ Crane
- ✓ Assembly area
- ✓ Secondary operations

- Building Power: 4,500 kVA
- 200 Ton Central Cooling System
- Central Material Handling
- Silos, Blending & Grinding
- Plant Support Equipment: Forklifts, Loading Docks, Conveyors, etc.
- Tool shop

10 Minutes from El Paso Border
Easy Access for Trucks
Newly Built, Class A Building

TIMS Capabilities Juarez /TJ

Injection Molding And Assembly

- ✓ Large parts
- ✓ Gas assist
- ✓ Insert molding
- ✓ Pad Printing
- ✓ Hot stamping
- ✓ Ultrasonic welding

Tool build design and management

- ✓ In house Design
- ✓ Project Management
- ✓ DFM & MOLD Flow
- ✓ China Eng. Office

Vacuum Metallization

- ✓ AL Coating

Metrology Lab and Very large on site Tool Room

- ✓ CMM
- ✓ Color, Gloss, Harmony measuring
- ✓ Laser scanning
- ✓ Packaging validation
- ✓ Rapid ECR

Certification : IATF16949, ISO9000, CTPAT,

Over 100 Injection molding machines. between 100T to 3000T. *(open capacity)*

Stable workforce and in-depth management expertise

TIMS Injection Machines

➤ Machine availability

<u>Juarez Plant 1 and 3</u>				<u>TJ Plant</u>		
<u>Toonage</u>	<u>Machine Qty</u>	<u>Available Capacity %</u>	<u>Available Capacity (machines)</u>	<u>Machine Qty</u>	<u>Available Capacity %</u>	<u>Available Capacity (machines)</u>
100-165	10	51%	5.1	6	94%	5.6
200-390	14	38%	5.4	8	73%	5.8
400-600	12	50%	6.0	9	69%	6.2
700-1000	10	45%	4.5	2	69%	1.4
1100-1750	10	52%	5.2	2	37%	0.7
2000-3000	3	87%	2.6	2	63%	1.3

<u>NEW Plant 5</u>			
<u>Toonage</u>	<u>Machine Qty</u>	<u>Available Capacity %</u>	<u>Available Capacity (machines)</u>
100-165	6	75%	4.5
200-390	6	75%	4.5
400-600	10	75%	7.5
700-800	11	75%	8.3
900-1000	5	75%	3.8
1100-1600	2	75%	1.5

Vacuum Metallization

- Fully automated production process controlled by a state-of-the-art IPC system.
- Large chamber and optimized for larger parts.
- Coating plastic, metal, glass, and ceramic parts.
- High throughput & quality.



Chamber Size(w/h)
1800mm X 2000M
71"x 79"



Tool Maintenance and ECR

- EDM, CNC, horizontal & vertical milling machines.
- 3 air cranes with capacity up to 30.
- Tig and micro welding.
- Heat treatment and hardness tester.

Daily Preventative - maintenance at machine level, cleaning, visual inspection of inserts, movable parts and venting.

Monthly Preventative –repair and replace mold parts.

Corrective Maintenance - ability to rebuild inserts & change Hot Runner configuration.

Engineering Changes - Ability to analyze & propose ECN for various applications.



Assembly and Secondary operations

Assembly and sub-assembly of component parts:

- Performing inspections
- Fastening
- Functional tests
- Labeling
- Quality control
- Packaging
- Preparation for final use

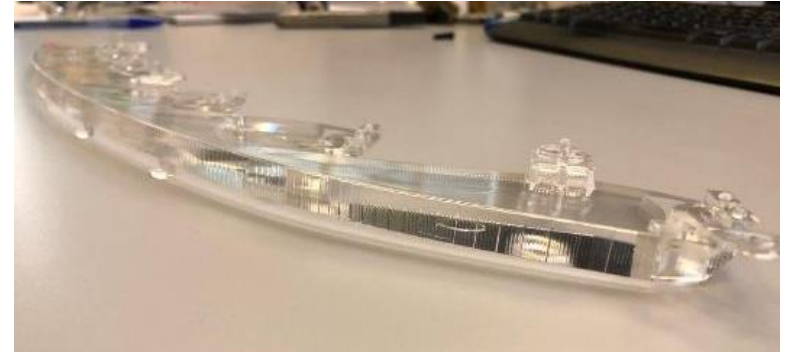
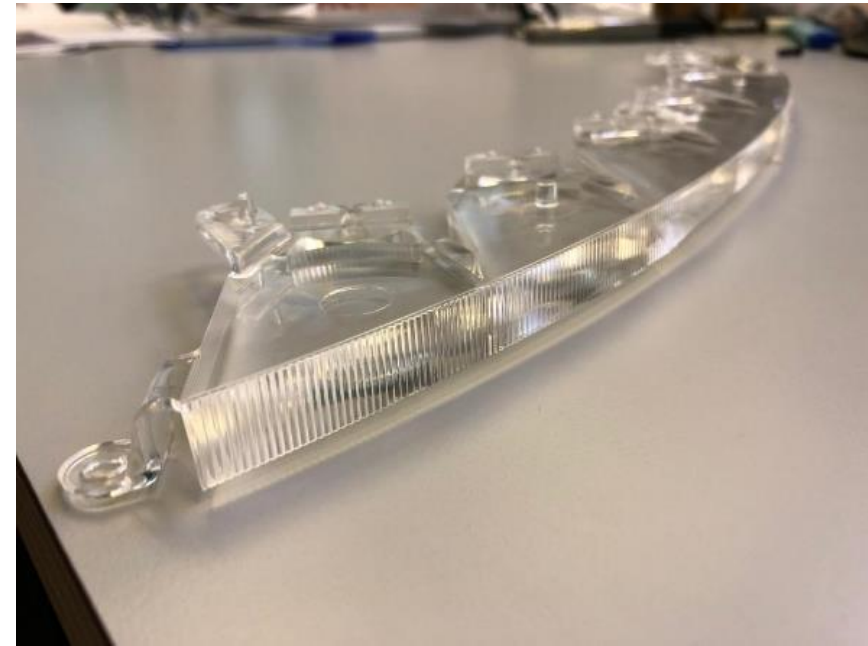
Secondary operations

Pad printing - Heat transfer - Hot stamping

Ultrasonic welding - Vibration welding



Light guides Molding capability



JEEP COMPASS 2021 HL blade – production in TIMS-3



Dedicated Facility for Light guides in Juarez



JEEP COMPASS 2021 HL light guide and inner lenses RL



Quality Systems

Manufacturing, 5'S, Kaizen, PDCA, DMAIC.

World Class

Process Control.

APQP, PPAP, FMEAS, CP, SPC, IQ, OQ,
PQ Validations Protocols for Medical industry.

Document and Data Control.

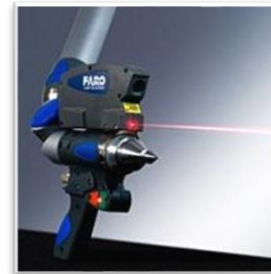
ISO/9000 – ISO/TS 16949 /VDA

Quality and Metrology Lab – Fully equipped

- Heat deflection load (HDT)
- VICAT softening temperature (VSP)
- Melt Flow Index
- Tensile strength
- Resistance Test
- Torsion Test
- Flexion-torsion Test
- Impact Test
- Flammability Test
- Dimensional Metrology
- Roughness surface
- Spectrophotometer (color and appearance)



The deflection temperature



Faro Arm EDGE



Fluorescence Spectrometry



Color Harmony Room

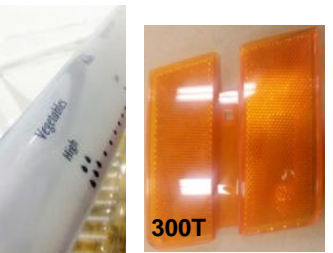


CMM 3D accurate measurements

OGP Smartscope
Fast & accurate measurements
for small parts



Snapshot of TIMS Products



TIMS Automotive Parts 1/2



TIMS Automotive Parts 2/2



TIMS Automotive Parts 2/3



TISM Contact

TIMS Contact Information

Contact us to learn more about manufacturing possibilities.

Thank you

Bernardo Castro /Sales/Engineering Manager

bernardo.castro@tekmartims.com

Ph:+52 656-379-1167

+1 (915) 307-9103

sales@tekmartims.com

<http://www.tekmartims.com/>



@TIMSMEXICO