



**TRANSMECÁNICA
EVEREST**

WE MAKE THE IMPOSSIBLE
POSSIBLE

AUTOMOTIVE MANUFACTURING COMPANY



OUR BUSINESS HISTORY





TRANSMECÁNICA
EVEREST

COMPANY CERTIFIED IN



ISO
9001:2015



IATF
16949:2016

OUR MISSION

SATISFY THE NEEDS OF OUR CUSTOMERS,
INTEGRATING CUTTING-EDGE TECHNOLOGY AND
DEVELOPING OUR HUMAN TALENT.

OUR VISION

TO BE THE BEST OPTION FOR OUR CLIENTS WITH
THE FLEXIBILITY TO FACE THE CHALLENGES OF
THE MARKET.

OURS

VALUES

- PROACTIVE
- LOYALTY
- TEAMWORK

OUR TECHNOLOGY

TRANSMECÁNICA EVEREST HAS STATE-OF-THE-ART MACHINERY TO PERFORM A WIDE VARIETY OF MACHINING, FROM SMALL AND SIMPLE PARTS TO LARGE AND COMPLEX PARTS. AMONG THESE MACHINES WE HAVE MACHINING CENTERS OF 3, 4 AND 5 SIMULTANEOUS AXES, UP TO LARGE CAPACITY BRIDGE-TYPE MACHINING CENTERS.



WITH GREAT PRIDE
TRANSMECÁNICA EVEREST IS A
100% CELAYENSE COMPANY
PROVIDES EMPLOYMENT TO MORE
THAN 110 PEOPLE...



ALWAYS LOOKING FOR THE QUALITY
AND SATISFACTION OF OUR
CUSTOMERS, TO BECOME WHAT WE ARE
NOW...

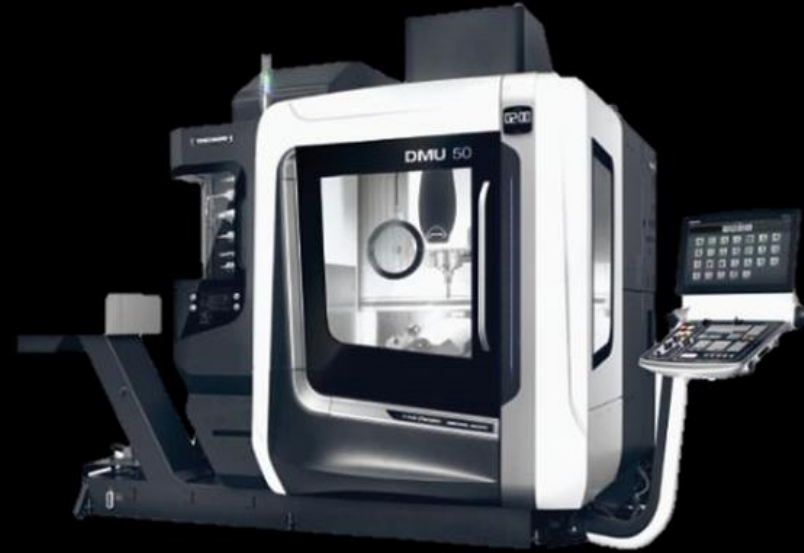


ALWAYS MAKING THE IMPOSSIBLE
POSSIBLE...



**TRANSMECÁNICA
EVEREST**

LINE FOR TOOLINGS



DMG MORI 5 AXIS
2 MACHINES



DMG MORI 5 AXIS
1 MACHINE

MASS PRODUCTION LINE



HAAS
42 MACHINES



DMG MORI
2 MACHINES

CNC MILLING



HAAS 3 AXIS
9 MACHINES



MAXMILL 3 AXIS
1 MACHINE

CNC TURNING



DOOSAN PUMA
4 MACHINES



MAZAK
2 MACHINES



TRANSMECÁNICA
EVEREST

BRIDGE MILL CAPACITY MACHINES

HAITIAN
GLU
23X30



SPECIFICATIONS

X=3,200mm Y=2,200 mm Z=800 MM

HAITIAN
GLU
18X30



SPECIFICATIONS

X=3,200mm Y=2,200 mm Z=1,000 MM

WE HAVE COMPETENT PERSONNEL FOR NEW PRODUCT
DESIGN AND PROCESS DEVELOPMENT.

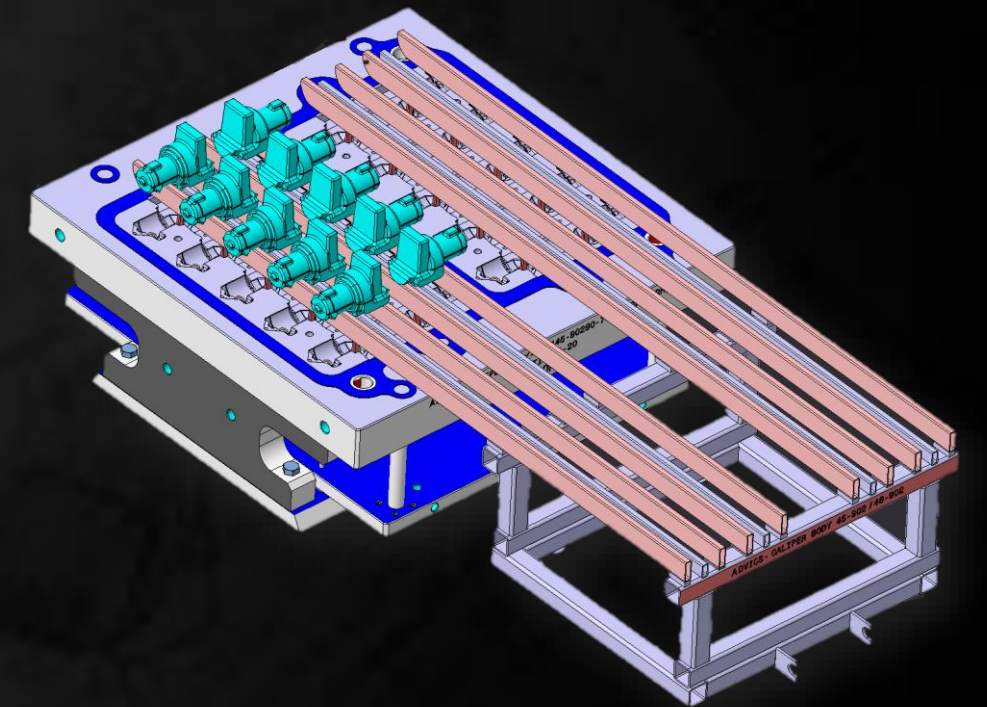
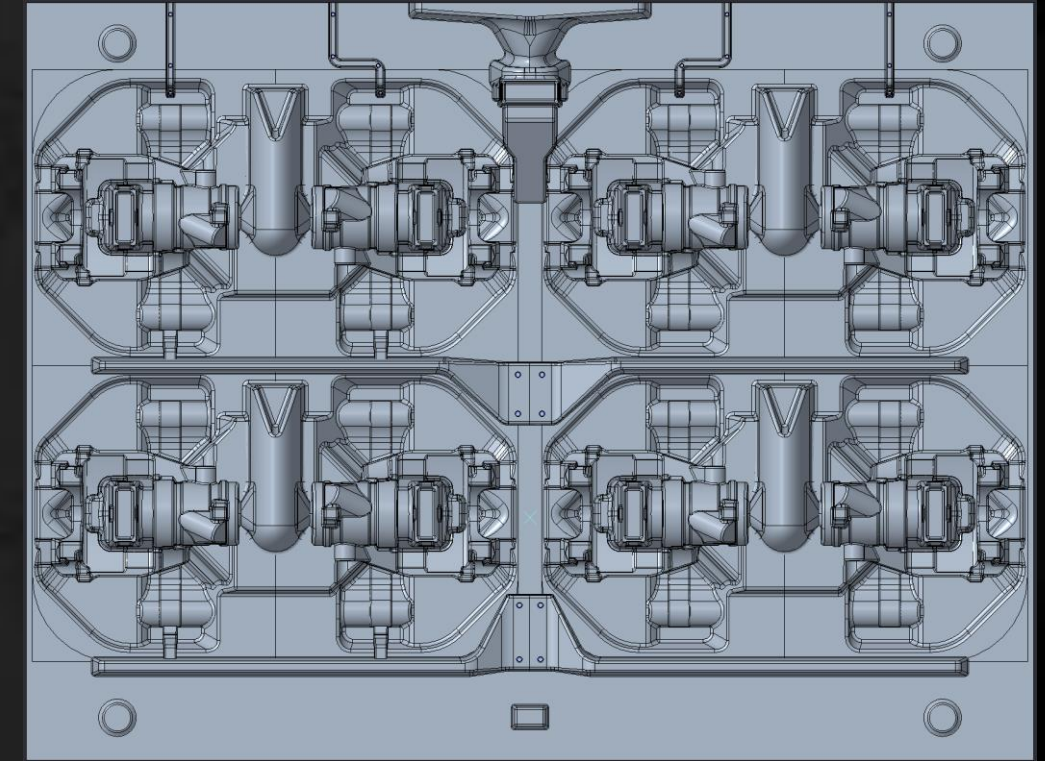


SOLIDWORKS

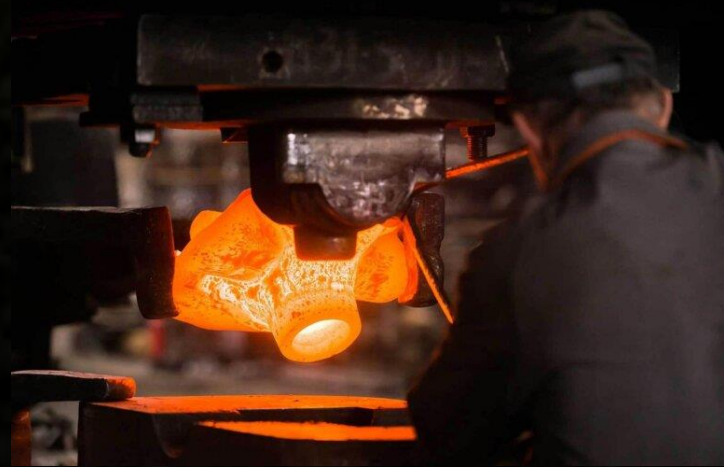
DESIGN + PROGRAMMING



Mastercam[®]



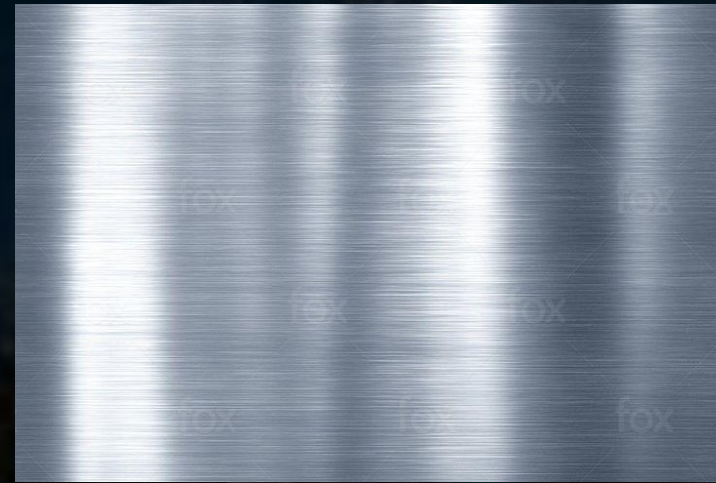
TYPES OF MATERIALS



FORGING



FOUNDRY



STEEL PLATES



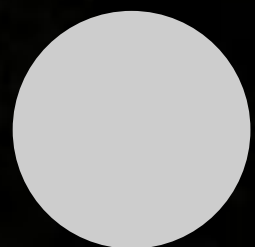
**SINTERIZED
STEEL**



PLASTICS



STEEL BARS



Ø 762 MM
MAXIMUM



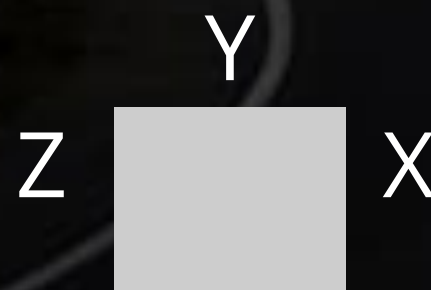
STEEL TUBES



Ø 200 MM
MAXIMUM



GRADE STEEL TOOLING



X: 3,200 MM , Y: 2,200 MM &
Z: 1,000 MM MAXIMUM

STEELS

- ALUMINUM
- BRONZE
- CARBON STEEL
- TOOL GRADE STEELS
- TITANIUM
- LOW CARBAN STEELS
- STAINLESS STEEL
- SINTERIZED

PLASTICS

- NYLAMID
- ACETAL
- RED PATTERN BOARD

FOUNDRY

- ALUMINUM
- STEEL
- STAINLESS
- NODULAR IRON CASTING
- GRAY IRON CASTING

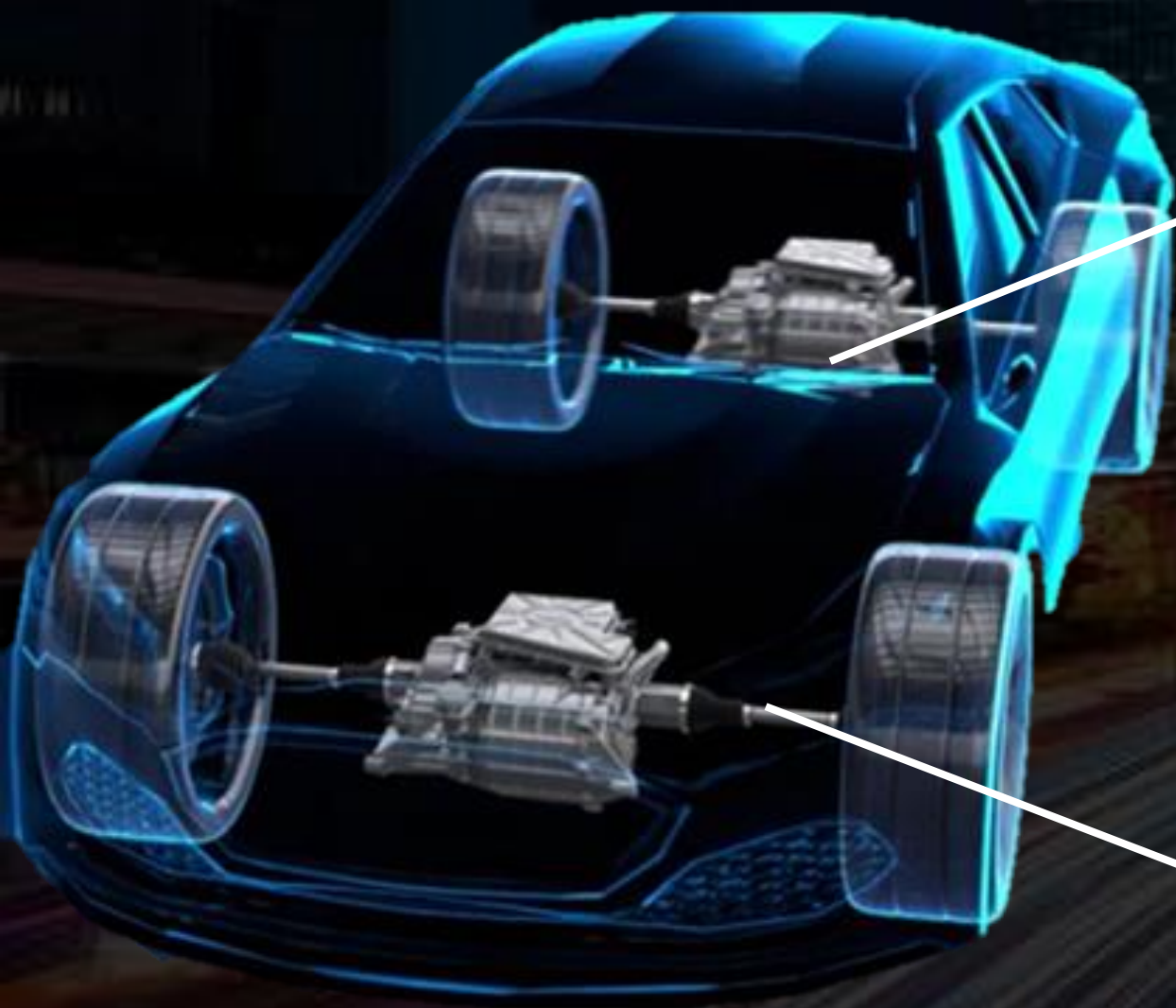
FORGING

- COLD, WARM & HOT
- ALUMINUM
- STEEL
- BRONZE



TRANSMECÁNICA
EVEREST

AUTOMOTIVE COMPONENTS



MORE THAN 6
TYPES OF
MODELS

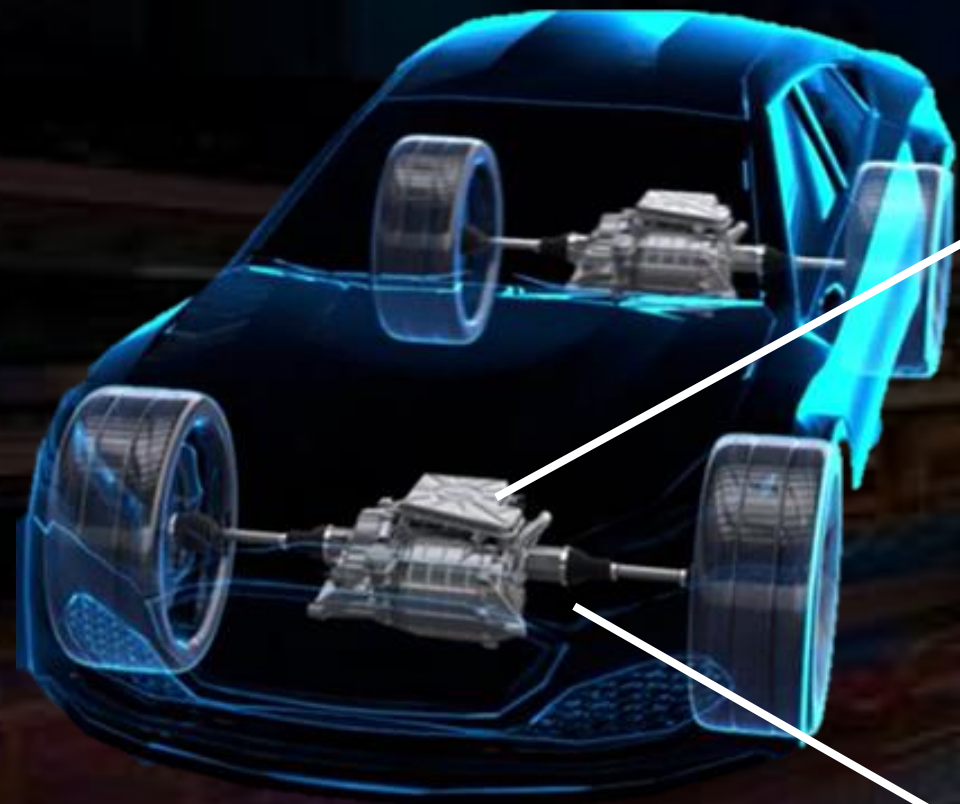


MORE THAN 56
TYPES OF MODELS



TRANSMECÁNICA
EVEREST

AUTOMOTIVE COMPONENTS



MAGNETIC SUPPORT



STABILIZER
BAR
&
METAL RINGS



TRANSMECÁNICA
EVEREST

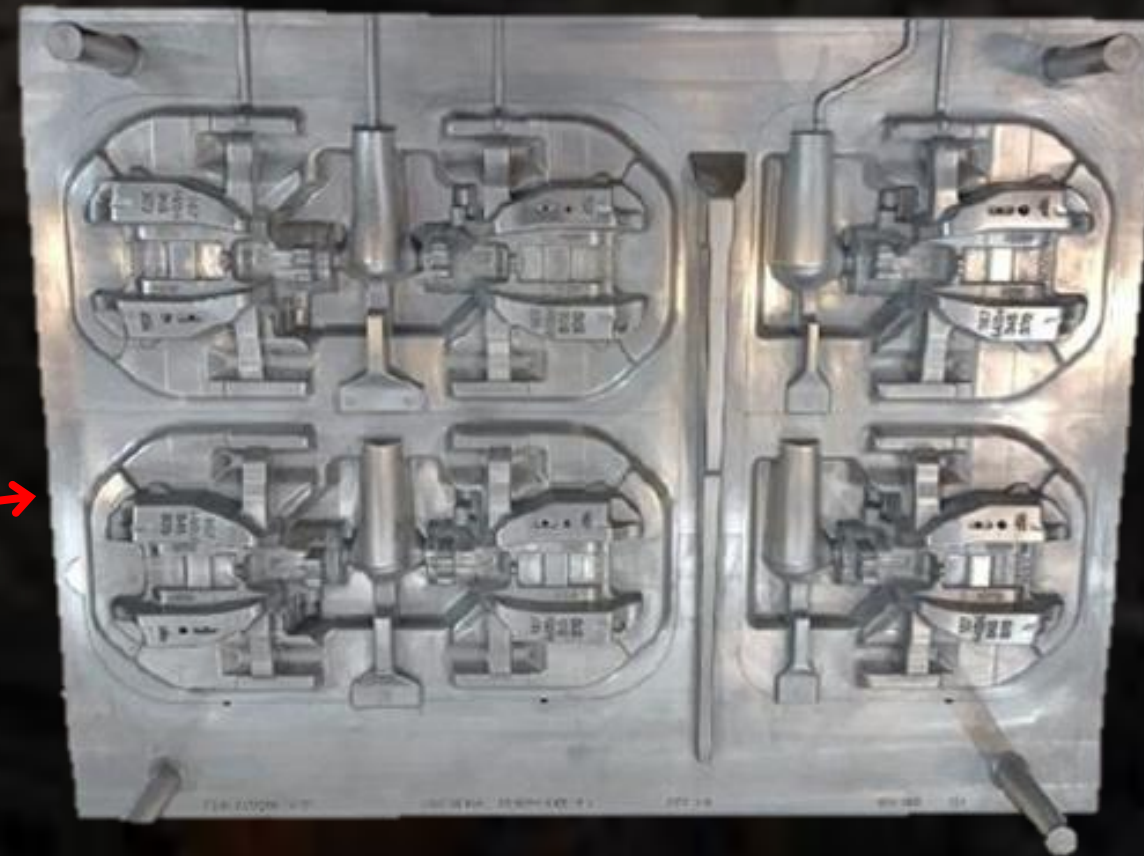
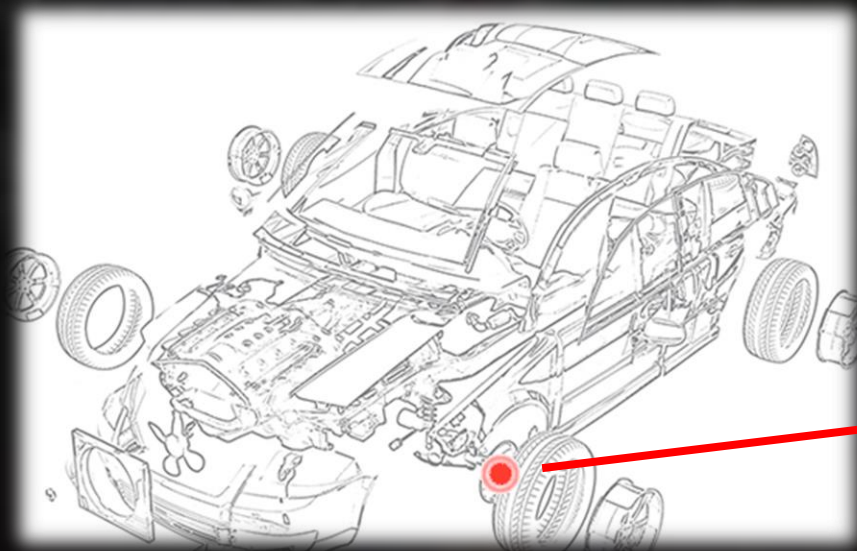
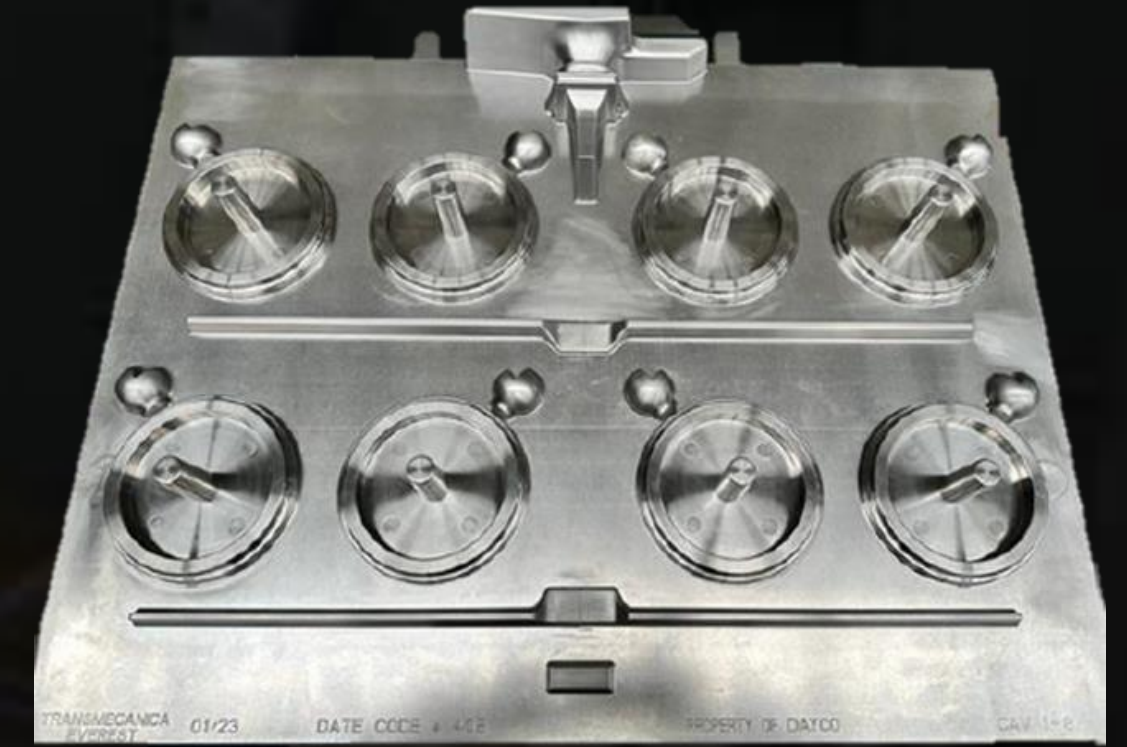
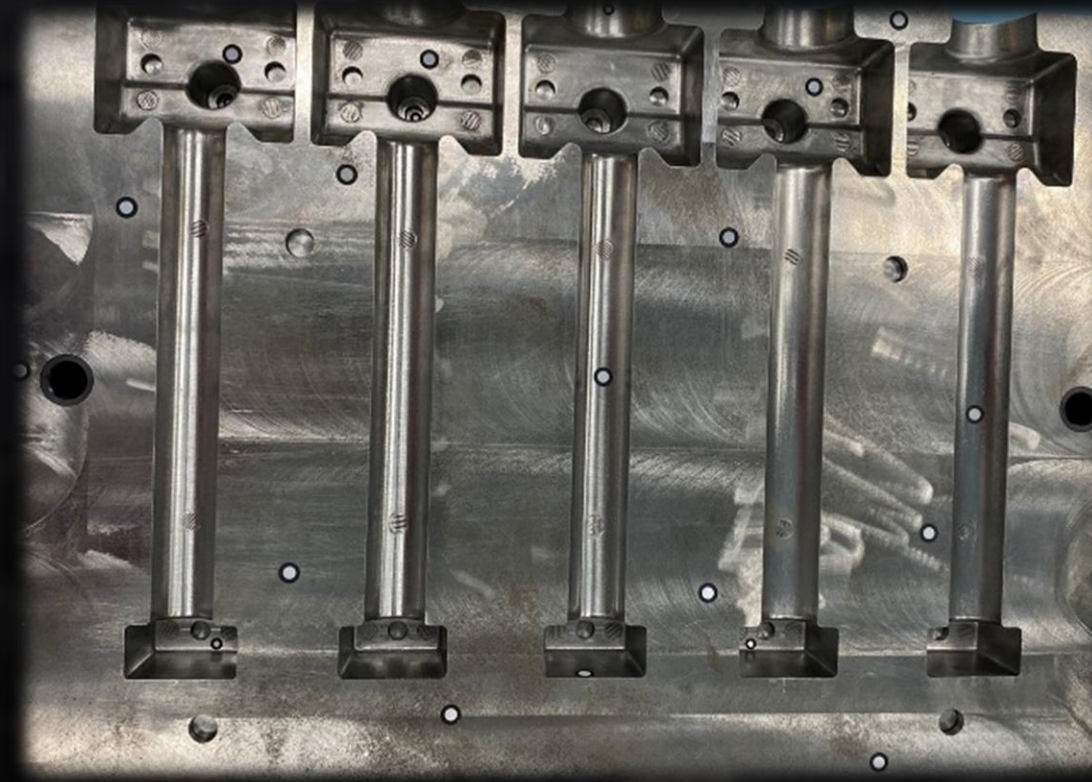
AUTOMOTIVE COMPONENTS

SHOCK ABSORBER
TUBE



SATISFYING WITH THE MOST DEMANDING
REQUIREMENTS OF OUR CUSTOMERS.

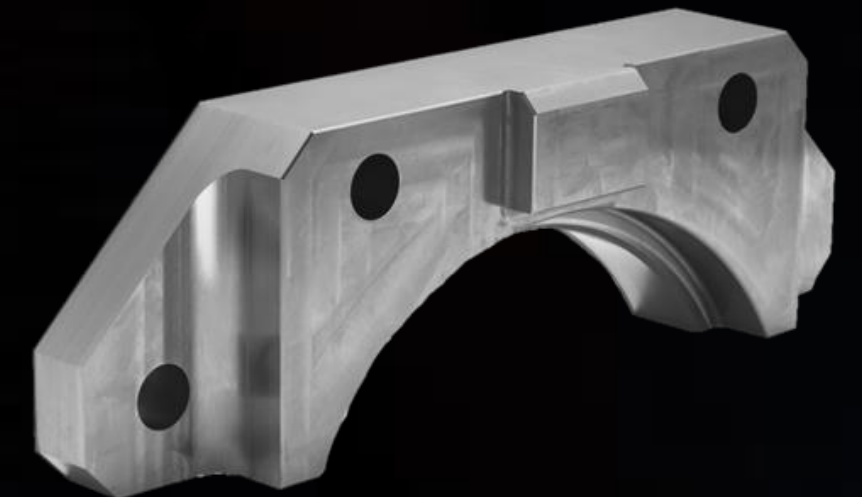
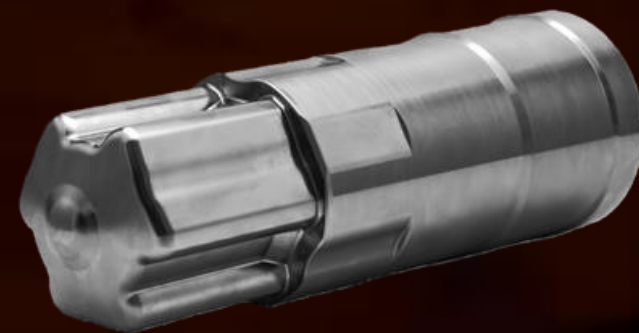
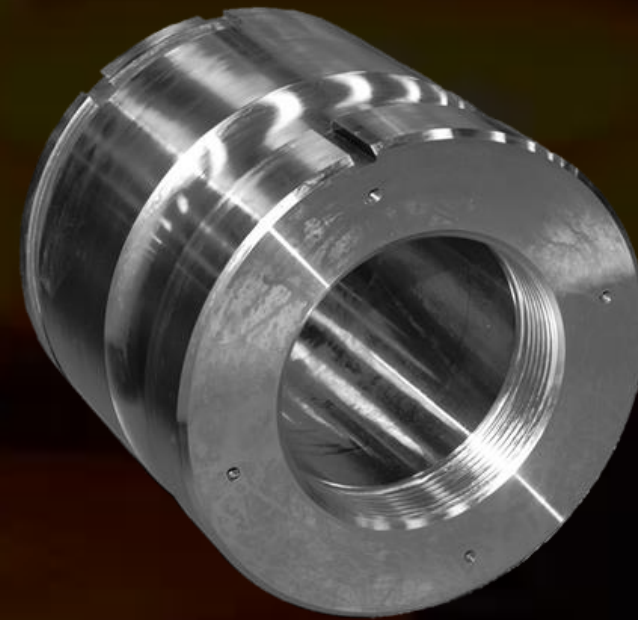
FOUNDRY TOOLINGS FOR MASS PRODUCTION





TRANSMECÁNICA
EVEREST

FORGING TOOLING





TRANSMECÁNICA
EVEREST

QUALITY LABORATORY

OUR INTERNAL LABORATORY TO CERTIFIED
OUR PRODUCTS AND ACHIEVE OUR CLIENTS
SPECIFICATIONS.



WE ALIGN OURSELVES WITH THE
REQUIREMENTS OF ISO/IEC 17025,
REFERENCED TO THE COMPETENCE FOR
TESTING AND CALIBRATION
LABORATORIES.



ALL OF OUR MEASUREMENT EQUIPMENT
AND MANAGEMENT IT'S REFERENCED TO
STATISTICAL TECHNIQUES OF THE MSA
MANUAL (MEASUREMENT SYSTEM
ANALYSIS).



TRANSMECÁNICA
EVEREST

MEASURING EQUIPMENT

CMM COORDINATE MACHINE

Mitutoyo

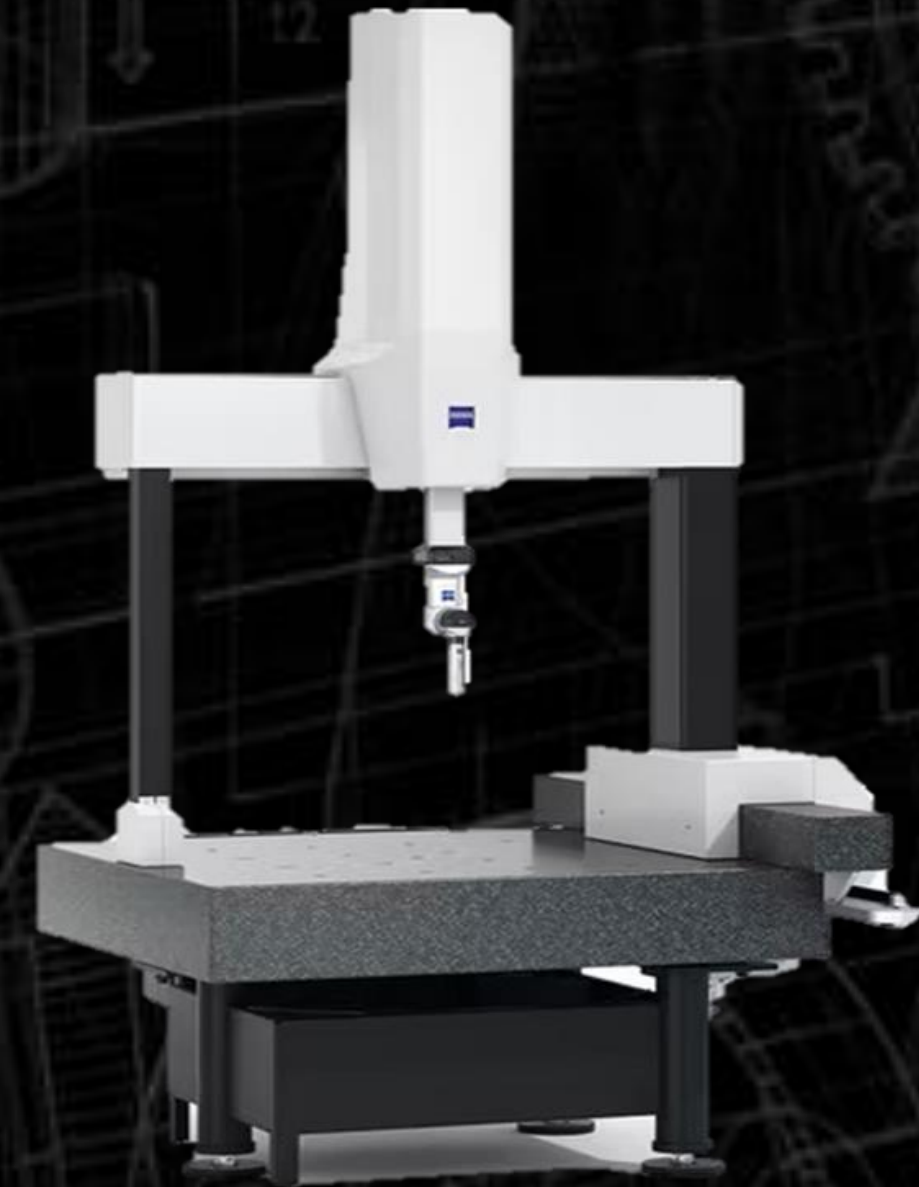


MODELO: CRYSTAL PLUS 776

SPECS: SHAFT (X) 700 MM, AXIS (Y) 700
MM AND AXIS (Z) 600 MM.
RESOLUTION: 0.0001 MM.
SOFTWARE: MCOSMO BASIC
SYSTEM ANALYSIS.

CMM COORDINATE MACHINE

ZEISS



MODEL: SPECTRUM 10/12/6

SPECS: SHAFT (X) 1000 MM, AXIS (Y)
1200 MM AND AXIS (Z) 600 MM.
RESOLUTION: 0.0001 MM.
SOFTWARE: CALYPSO 2021



TRANSMECÁNICA
EVEREST

MEASURING EQUIPMENT

OPTICAL COMPARATOR

Mitutoyo



MODEL: PH-A-14

SPECS: SHAFT (X) 200 MM AND SHAFT (Y) 100 MM
RESOLUTION: 0.0001 MM
MAXIMUM WEIGHT: MAXIMUM PART WEIGHT 45 KG
PROJECTION: 10 PROJECTION LENSES

SCANNING VISION MACHINE



MARPOSS



MODEL: OPTO QUICK M60

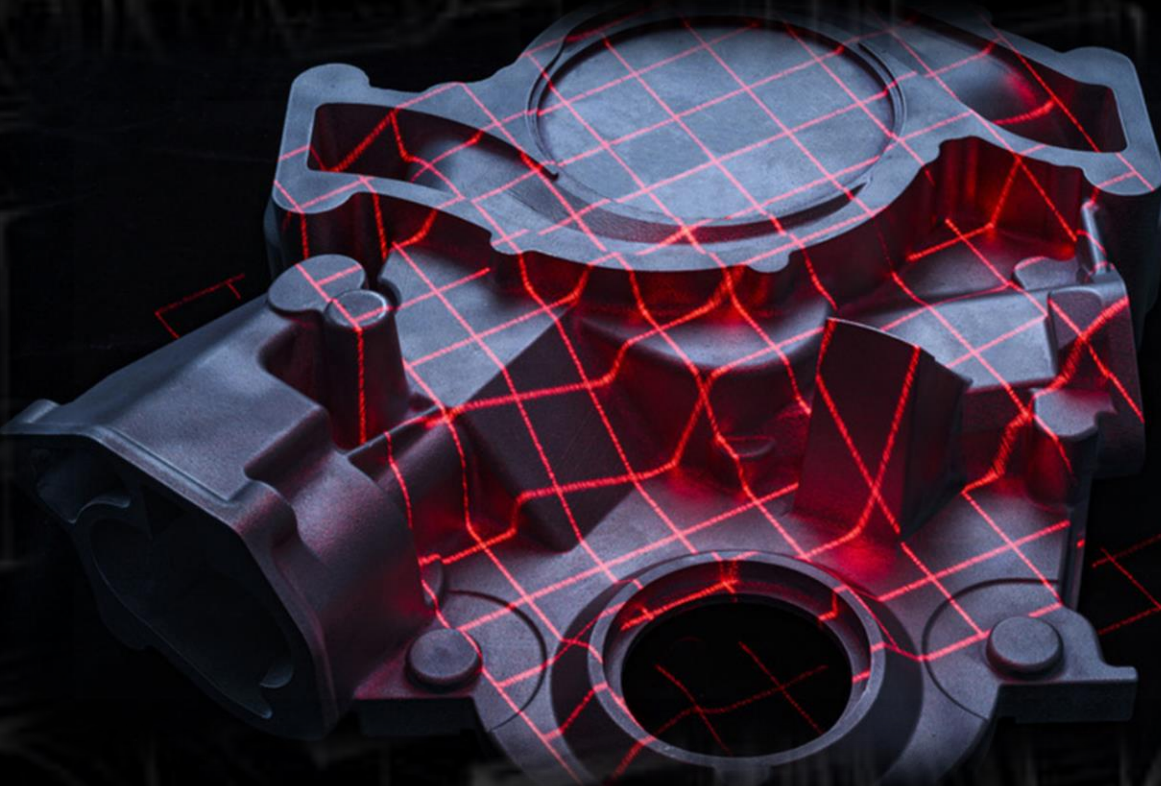
SPECS: LENGTH (0-600 MM)
DIAMETER (140 MM)
RESOLUTION: 0.0001 MM
SOFTWARE: MARPORSS OPTO QUICK 2021



TRANSMECÁNICA
EVEREST

MEASURING EQUIPMENT

 **ZEISS INSPECT**
Optical 3D



T- SCAN HAWK

ZEISS

TRANSMECÁNICA EVEREST INNOVATES IN
MEASUREMENT SYSTEMS PROVIDING SCANNER
MEASUREMENT REPORTS AND REVERSE
ENGINEERING SERVICES.



TRANSMECÁNICA
EVEREST

OURS CLIENTS

 **BILL FORGE**



DRAXTON
Mobility inspired

MTI
MetalTechnologies™
More than metal.


KOLBENSCHMIDT

Continental 

TREMEC

BORGWARNER

 **EVERCAST**

CNH
INDUSTRIAL


HONDA




nacobre®



DANA

Gishner INC

Impro

MAT
FOUNDRY
GROUP LTD


SANNOHASHI

 thyssenkrupp

 CIE Pemsal



**TRANSMECÁNICA
EVEREST**

OUR CAPACITY



TOTAL SURFACE:

20 000 M2

1ST INDUSTRIAL UNIT (4,800 M2): 70% BUSY

2ND INDUSTRIAL UNIT (5,000 M2): 100% FREE



**TRANSMECÁNICA
EVEREST**

CONTACT: CUSTOMER
SERVICE

ENG. JAVIER EFRAÍN HERNÁNDEZ GUTIÉRREZ.
E-MAIL: JAVIER.HERNANDEZ@TRANSMECANICA.MX
PHONE:(461)-266-8847

CONTACT: CUSTOMER
SERVICE

ENG. EDGAR ENRIQUE GARCIA RODRIGUEZ
E-MAIL: EDGAR.GARCIA@TRANSMECANICA.MX
PHONE:(461)-101-1897

THANK YOU!

