

cbq technologies





General Description of the Company

- CBQ Technologies was founded on September of 2004.
- We are an internationally recognized company dedicated to the implementation of high technology to the manufacturing of precision components, fixtures and assembly.
- Our commitment offers a turnkey solution where our customers can find the quality they require, the delivery times they need and the attention in the service they deserve.



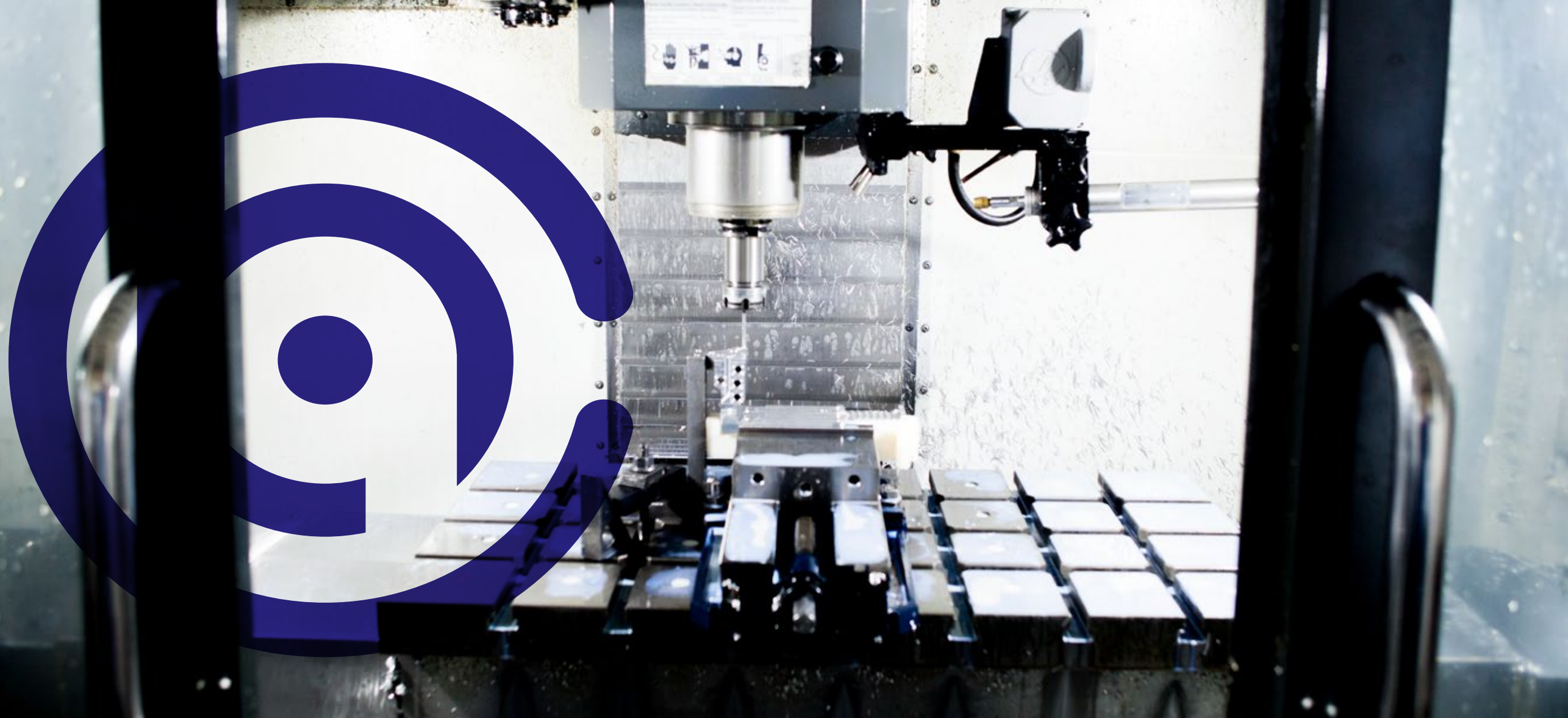
WORK TEAM

The greatest asset we count on is our people;

- We make sure to interact with our work team on a daily basis, always fostering fellowship, respect, and trust. We firmly believe that the personal growth of each member of this team helps us achieve our team goals. Together we represent 50 years of experience.
- In CBQ Technologies, we believe that training is a vital part of our development as a Company.

We have training and induction courses that ensure our employees have the experience and knowledge to develop their skills within the position and assigned area, making the company grow.





Market Needs

We have vertical machines of 3 and 4 axes of Computer Numerical Control with a carousel of 22 tools programmed under a friendly and very reliable CAD-CAM system for our clients; Also machinery that helps us reach strict tolerances of .0001 of an inch.



Our Solution

This technology ensures quality, precision, and repeatability, reducing costs and increasing our customer's production. Likewise, we have available CNC lathes with live tooling.

We have the best location on the border between Mexico and the US, which allows us to be at the forefront of the logistics and delivery times our customers need. We offer various land and air distribution channels, so our customers receive their products just on time.



cbq technologies



Current Service

CBQ Technologies S.A de C.V. is a company dedicated to the following services:

- Specialize in general machining
- Manufacturer of specialized parts
- Precision grinding
- General lathing
- Electrode welding TIG and MIG
- Thermal treatments
- Assembly
- Rework according to the customer requirements
- Mechanical fixtures
- 3D Drawing
- Chemical treatments or process

We are determined to be a source of development for our customers, employees, associates, and community. We have rigorous quality policies and a high commitment to serving our clients.

Team Work

- Customer service, quality of service, sense of urgency, and continuous improvement are the values that, daily, lead us to be a company without borders, to have the recommendation of our clients, to solve their problems in an adequate and anticipated way and to implement the actions that enhance the efficiency and effectiveness of the processes.
- Our processes include the handling of materials such as 5000 Series, 6000 and 7000 Aluminium, 310, 304, 316, 410 Stainless Steel, Special Polymers such as Peek 1000, Nylacero, Delrin, Standard Bronze and Graphite, Machinery grade steels 1045, 4140 and 9840. All of them, to mention some. Our experience is unique, with specialized parts and medium volume.
- Our design team is prepared to receive the client's requirements, under a 2D and 3D structure, with specialized software that allows us to program in CAM, ensuring the manufacture of the parts with respect to the design requested by the client.





COMPETITION AND COMPETITIVE ADVANTAGE

	CBQ Technologies	PAGES	Absolute Automation
Sales Department	YES	YES	NO
Design and Automation Department	YES	NO	YES
Machinery Workshop	YES	YES	YES
Time of Delivery	1 week max.	15 days max.	3 weeks max.
Professional Level	Master's degree	Technical degree	Bachelor's degree



COMPETITIVE ADVANTAGES

- Integration of machining services with design and automation services.
- Competitive price.
- Competitive quality.
- Time of delivery.
- Subsidiary transportation company.

Policies

CBQ Technologies is a leading company with global reach in the elaboration of metalworking products and qualified industrial services that have the knowledge, experience, and commitment to understand and satisfy the needs of our clients and other interested parties through the continuous improvement of the system quality management.

At CBQ Technologies, we create and develop industrial solutions with high quality standards that drive growth and development.



CBQ
Production
and Sales

- Designing machines and efficient equipment for easy application and use.
- Respecting the time of our customers through On-Time deliveries.

- TOTAL CONFIDENTIALITY on the information provided on their design process.
- Fair Prices.
- Mechanical Design(custom-designed-machinery services)
- Costumers Service.

CNC MACHINES

-Vertical machining center -HAAS

- Num.CBQ = 1
- Model = DT-1
- Control = HAAS
- Axes = X, Y, Z
- Max. RPM = 15,000
- Tool capacity = 20
- Work area = 20 "x 16" x 15 "
- NS 1132479



Vertical machining center HAAS

- Num. CBQ= 2
- Model = VF-2ss
- Control = HAAS
- Axes = X, Y, Z
- Max. RPM = 12,000
- Tool capacity = 24
- Work area = 30 "x 16" x 20 "
- NS= 1167225



Vertical machining center FADAL

- Num. CBQ= 3
- Model = VMC 3016FX
- Control = FANUC
- Axes = X, Y, Z
- Max. RPM = 8,000
- Tool capacity = 21
- Work area = 35 "x 15" x 15 "
- NS 012006109252



CNC MACHINES



Vertical machining center
HAAS

Num. CBQ= 4
Model = VF-2ss
Control = HAAS
Axes = X, Y, Z
Max. RPM = 12,000
Tool capacity = 24
Work area = 30 "x 16" x 20 "
NS= 1095483



-Vertical machining center
-HAAS

-Num.CBQ=5
- Model = VM-2
- Control = HAAS
- Axes = X, Y, Z
- Max. RPM = 12,000
- Tool capacity = 24
- Work area = 30 "x 20" x 20 "
-NS 1098281



-Vertical machining center
-HAAS

-Num. CBQ= 6
- Model = VF-4
- Control = HAAS
- Axes = X, Y, Z
- Max. RPM = 10,000
- Tool capacity = 24
- Work area = 50 "x 20" x 25 "
-NS 1154329

CNC MACHINES



Vertical machining center
HAAS

Num. CBQ= 10
Model = VF-2ss
Control = HAAS
Axes = X, Y, Z
Max. RPM = 12,000
Tool capacity = 24
Work area = 30 "x 16" x 20 "
NS= 1167230



Vertical machining center
HAAS

Num. CBQ= 11
Model = VF-2ss
Control = HAAS
Axes = X, Y, Z
Max. RPM = 12,000
Tool capacity = 24
Work area = 30 "x 16" x 20 "
NS= 1167229

CNC MACHINES

-Vertical machining center -HAAS

- Num. CBQ= 12
- Model = VM-3
- Control = HAAS
- Axes = X, Y, Z
- Max. RPM = 12,000
- Tool capacity = 30
- Work area = 40 "x 26" x 25 "
- NS 1167264



-Vertical machining center -HAAS

- Num. CBQ= 13
- Model = VF-4
- Control = HAAS
- Axes = X, Y, Z
- Max. RPM = 10,000
- Tool capacity = 24
- Work area = 50 "x 20" x 25 "
- NS 1167192



SWISS LATHES CNC

SWISS LATHE
Citizen Cincom

Controller = Cincom

Model = L20e-2M8

NS = QF6843

Max RPM = 10000

Tool capacity = 37

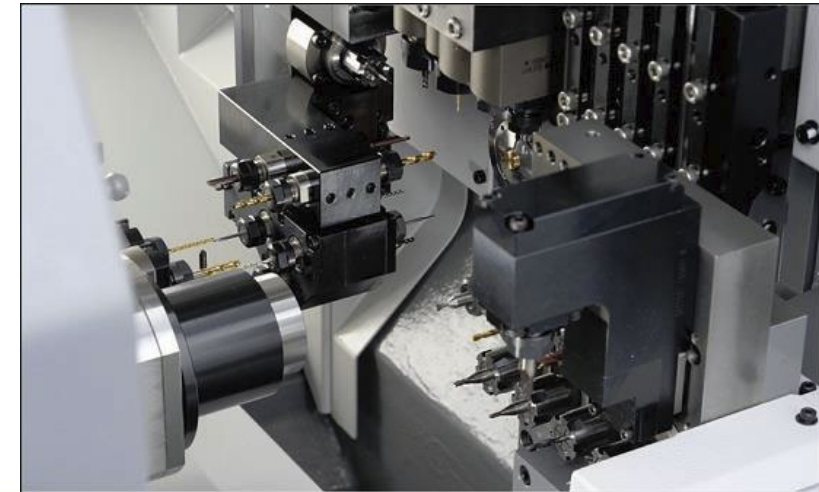
Work area between centers = 7.5 "

Dimensions for pieces of 2.7mm to 25.4mm
in diameter, and with lengths from 9mm
to 203mm with a tolerance of .0005mm

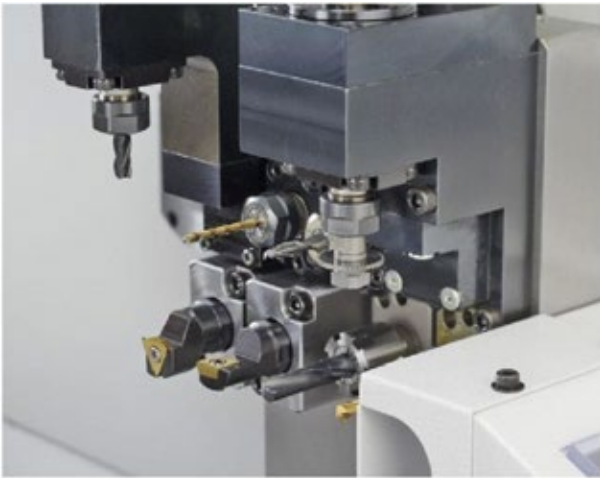
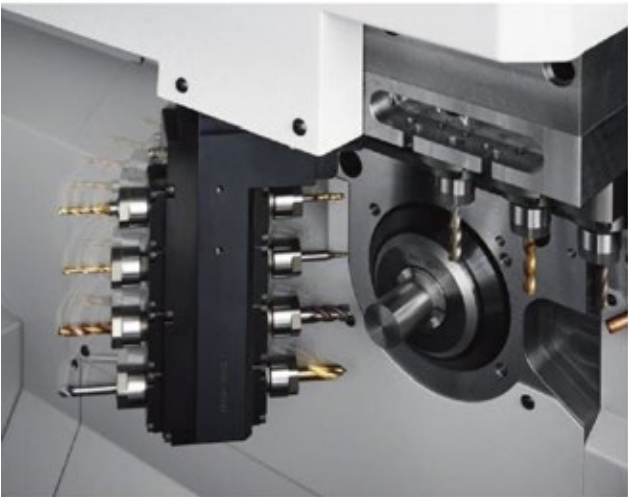
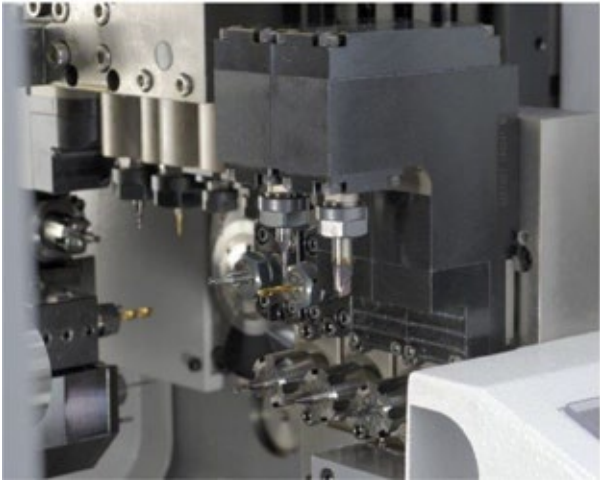
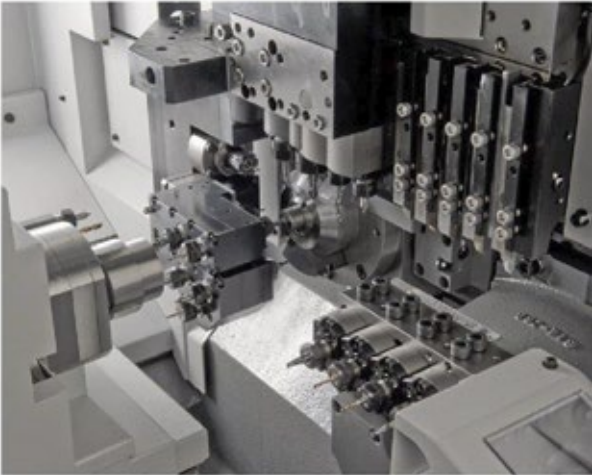


<https://www.youtube.com/watch?v=3iYn0syTf7c>

https://www.youtube.com/watch?v=a6fZjUy0_U0



SWISS LATHES CNC



LATHE CNC

Lathe Hyundai Kia 21LMS

Model F-0I-TC

FANUC control

Axes = X, Z

Max. RPM = 4,000

Tool capacity = 12

Work area 15 "x 7"

NS G3153-0452



CUTTING MACHINES

Horizontal belt saw SHARK

Model = 281
Slow speed = 36 mt/min
Fast speed = 72 mt/min
Jaw Opening = 285mm
Refrigerant = Yes (13 lt)
NS 551293 44CMP



-Vertical band saw -KALAMAZOO

- Model = 24-T-10
- Speed I = 200-1000 mt/min
- Work area = 20 "x 20" x 7 "
-NS 78126



CONVENTIONAL MACHINES

Milling machine
"Republic Lagun"
2 MACHINES

Model = FVT-2
Axes = X, Y,Z
Max. RPM = 3,000
Work area = 33 "x 16" x 18"



Milling machine
"Chevalier"

Model = FM3VK
Axes = X, Y,Z
Max. RPM = 3,300
Work area = 30 "x 14" x 18"
NS KM 96 B303



"JET" lathe

Model = 1430
Flip = 12 "x 26" long
Max. RPM = 1200
NS 8467



"HOMESTRAND" lathe

Model = Homach 1
Flip = 14 "x 50" long
Max. RPM = 1500
NS3142



"TITANIUM" lathe

Model = TL-2680B
Flip = 26 "x 80" long
Max. RPM = 1600
NS 06011242

RECTIFIED, THERMAL TREATMENT and WELDING

Grinding machine KENT

Model = SGS-1020-AHD
Axes = X, Y,Z automatic
Max. RPM = 3,500
Work area = 20 "x 10"



"CRESS" oven

Model = C133
Work area = 7 x 10 x 10
NS 9311



-"Lincoln" Welder

- Model = Mega force 251AC
- Type = Coated Electrode
- Voltage = 110v / 220v
- DC current setting



"Lincoln" Welder

Model = 225
Type = TIG
Range = 5-230 amps
Parameter Self Balance
Cleaning vs. penetration.



LASER MARKER



- KEYENCE MD-X 1500
- HIGH PEAK POWER (200 KW) AND SHORT PULSE WIDTH (25 W)
- 3-AXLE CONTROL WITH AUTOFOCUS
- Laser YVO4, Prodcut Laser Class 4 (IEC60825-1, FDA [CDRH] Part 1040.10)
- MARKING AREA 125 x 125 x 42 mm
-4.92" x 4.92" x 1.65"

<https://www.youtube.com/watch?v=PW40iyPxo9Y>

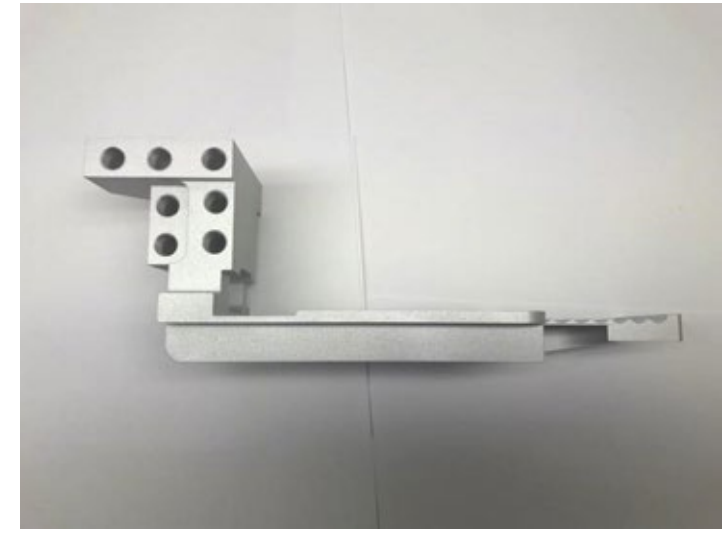
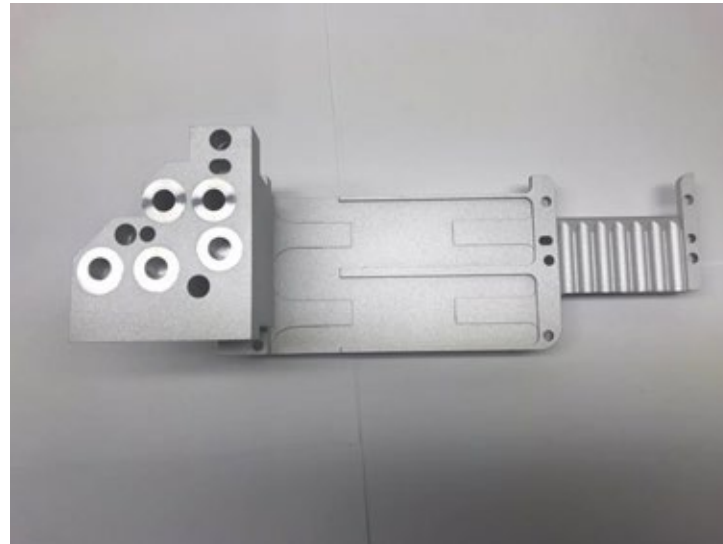


SAND BLAST

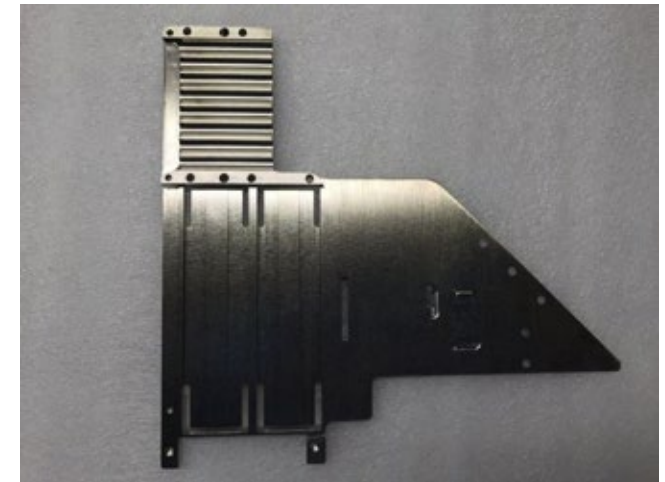
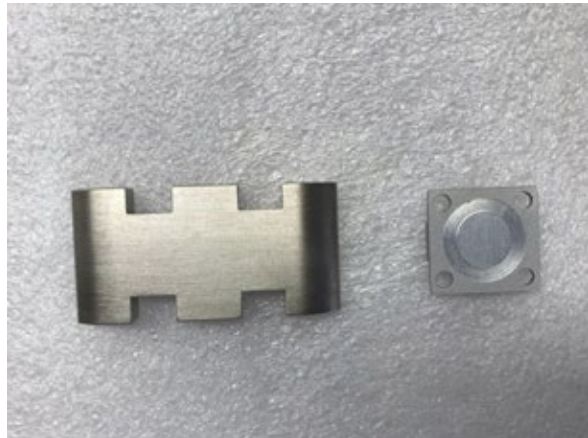
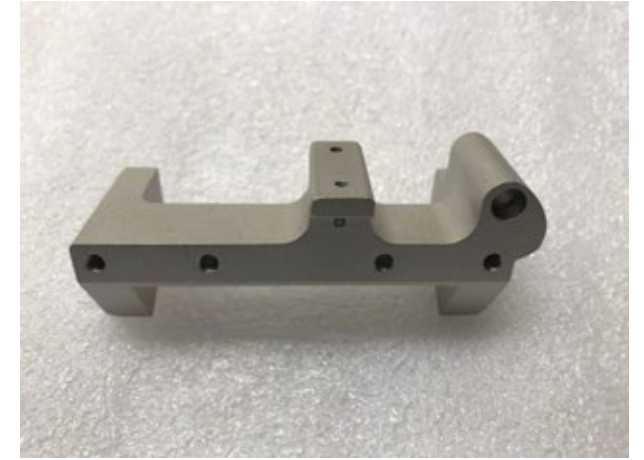
- Blast cabinet
- (2 cabins)
- Model = 60738
- NS = 372801749
- Voltage = 110v



Manufactured Parts at CBQ in Aluminum



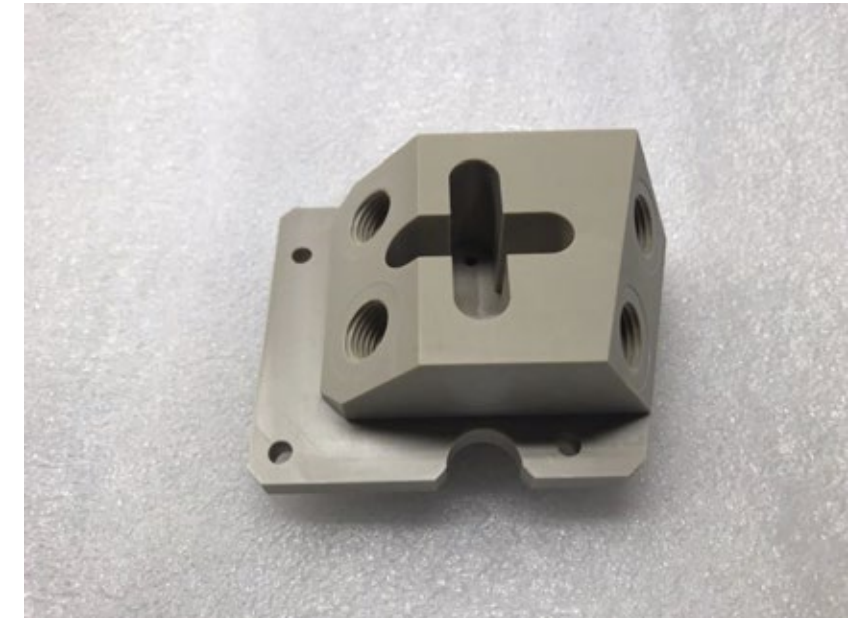
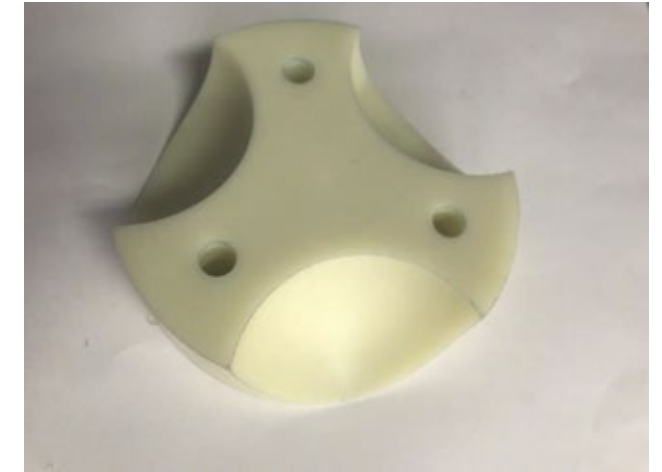
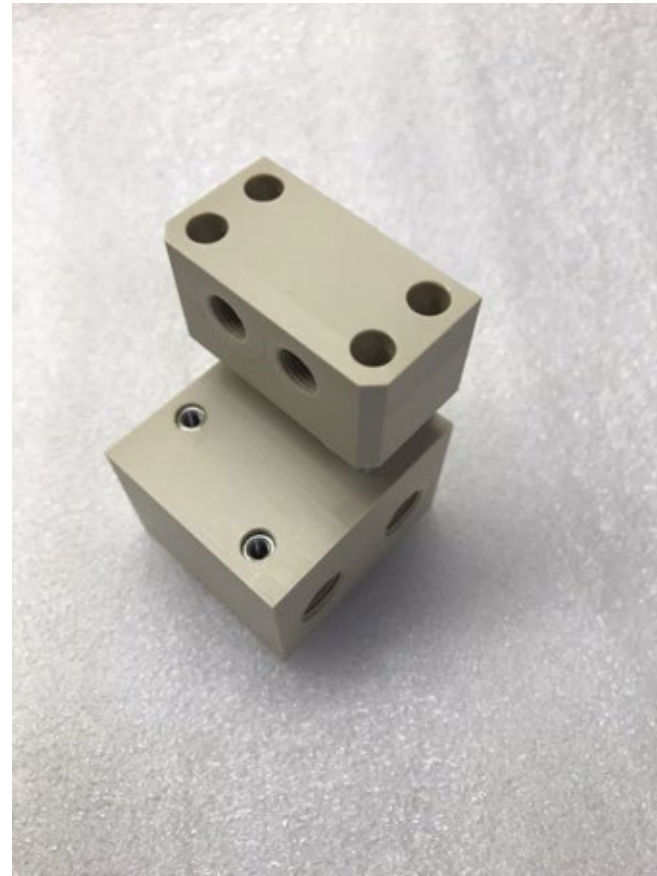
Manufactured Parts at CBQ in Aluminum



Manufactured Parts at CBQ in Steel



Manufactured Parts at CBQ in Polymers



Surface treatments to ferrous and non-ferrous metals for the aeronautical sector

PASSIVATE PER ASTM A967

ELECTROLESS NICKEL ATSM733

ELECTROPOLISHED

ANODIZE PER MIL-A-8625 TY,I,
CL1, NICKEL ACETATE SEAL.

ANODIZE PER MIL-A-8625 TY,II,
CL1, NICKEL ACETATE SEAL.

ANODIZE TYPE III, CLASS 2,
3. 25UM MIN, MIL-A-8625

COLOR: NATURAL, RED AND
BLACK



THICKNESS FOR ALL PARTS ARE VERIFIED WITH POSITECTOR TO GUARANTEE CUSTOMER REQUIREMENTS



Manual de Políticas y Procedimientos
CBQ Technologies SA de CV

Nombre: INSTRUCCIÓN PARA ANODIZADO NATURAL

Responsable:
Tratamiento Químico

REFERENCIA NORMA AS 9100 REV D
CÓDIGO: TQ07/01

REVISIÓN 0
05/06/2019

Página 1 de 10

WE HAVE PROCEDURES AND / OR WORK INSTRUCTIONS FOR EACH PROCESS



OUR PROCESSES CAN BE CERTIFIED BY SALT CHAMBER WITH EXTERNAL SUPPLIER

Building Capacity



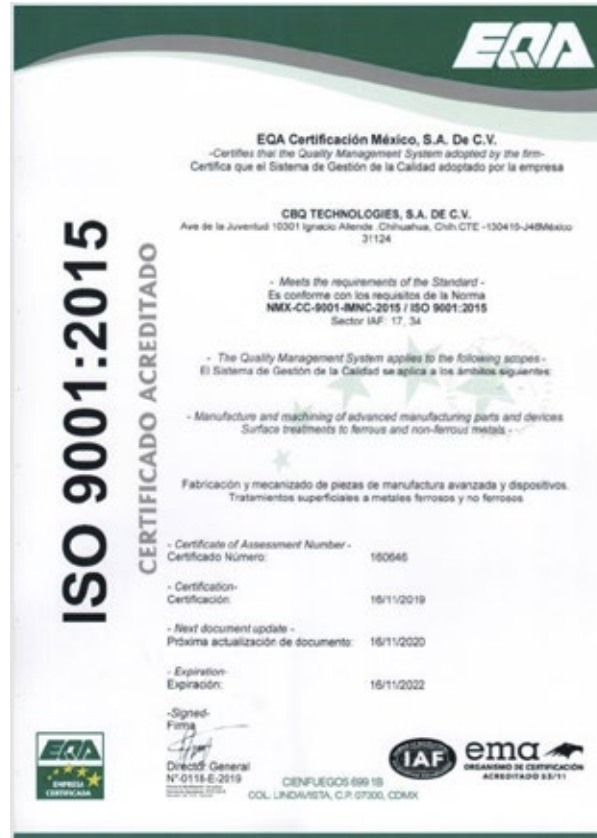
Actual

40902.86 total square feet

30677.14 square feet of offices

Certifications

ISO9001:2015



AS9100D



Our Clients



Aerosystems

