



# Accudyn Business Overview

February 2024

# Accudyn

---

A Summary of our Capabilities & Outlook

# Industry Leading Injection Molding

Custom Injection Molder that Provides Technical, Innovative Solutions to our Customers

Adding Value by Expanding our Manufacturing Capabilities through the Incorporation of New Technologies

Global Presence with Customers and Suppliers



# Accudyn

## A Company of Values



WELL-BEING OF OUR  
PEOPLE



RELATIONSHIP WITH  
OUR CUSTOMERS



SUSTAINABILITY OF  
OUR BUSINESS



ENGAGEMENT IN  
OUR COMMUNITIES

# Accudyn History – Key Milestones



**1998**

Accudyn  
founded in Erie  
PA



**2007**

Established  
Accudyn de  
Mexico in  
Chihuahua,  
Mexico



**2012**

Added Internal  
Tooling  
Capability with  
Acquisition of  
Crusade Tool



**2013 – 2016**

Major Expansion  
at Accudyn Erie

Accudyn de  
Mexico Moves to  
a New Location

Company-Wide  
ERP Transition to  
IQMS



**2017**

Engineering  
Center  
Expansion in Erie



**2018 – 2022**

Added Capacity  
and Assembly  
Capability in  
Chihuahua

Strategic  
Planning

Organizational  
Structure / Key  
Personnel  
Additions

Managing the  
Impact of COVID

Accudyn Mold &  
Engineering



# Accudyn Erie

Location – Erie, PA (86,000 sq. ft.)

Employees – 160+

Presses – 49 (20 to 500 tons)

Quality Certifications:

ISO 9001:2015

ISO 13485:2016

ISO 14001:2015

UL QMMY2 (E476744)





# Accudyn Chihuahua

Location – Chihuahua, MX (56,000 sq. ft.)

Employees – 350+

Presses – 56 (40 to 900 tons)

## Certifications

IATF 16949:2016,

ISO 9001:2015,

UL QMMY2 (E476744)



# Accudyn Mold & Engineering (AME)

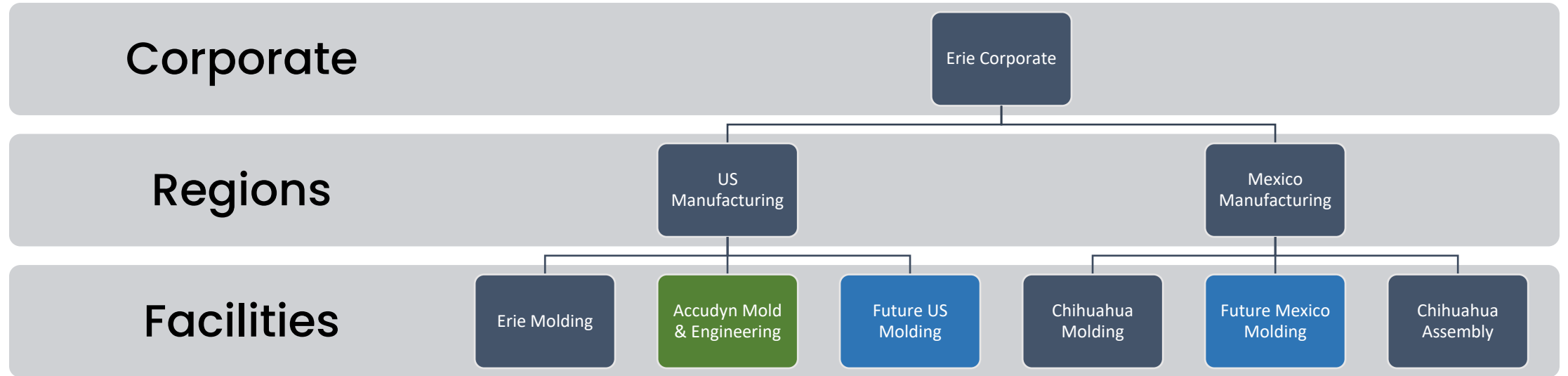
Location – Erie, PA (12,000 sq. ft.)

Employees – 13

AME is a full-service tool shop with world class technology and experienced tool makers that is fully integrated with our engineering and program management teams.







# Organizational Structure

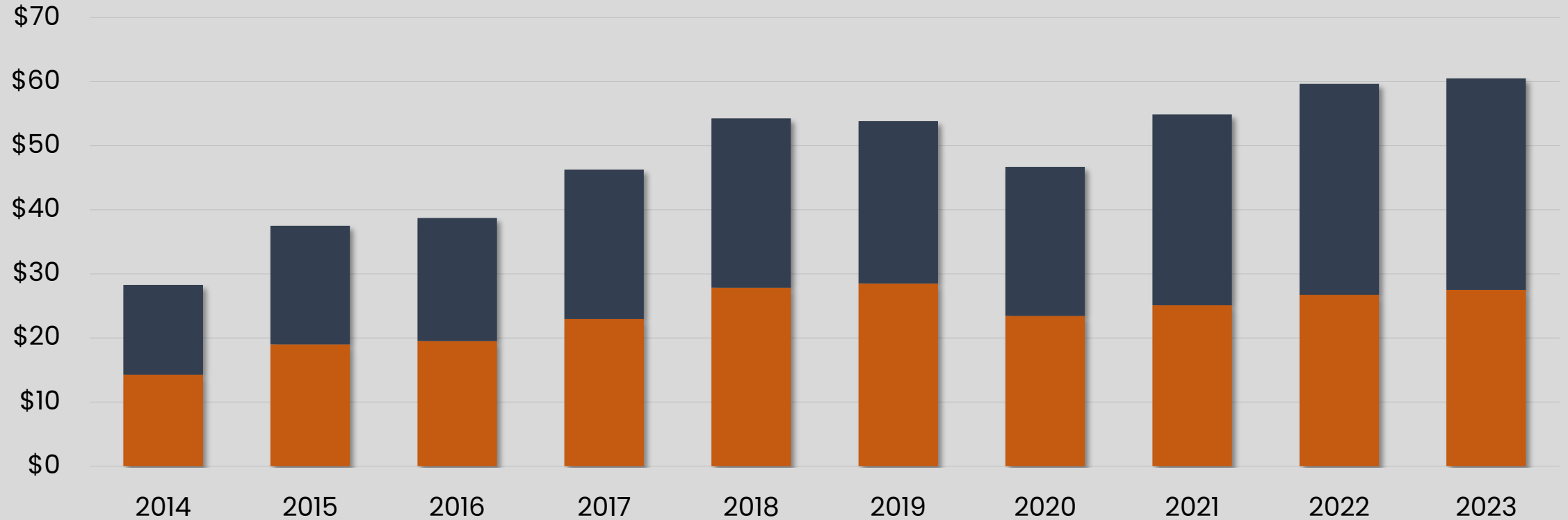
# Sales Review

---

A Review of Performance and Growth

# Accudyn Sales History

Million USD



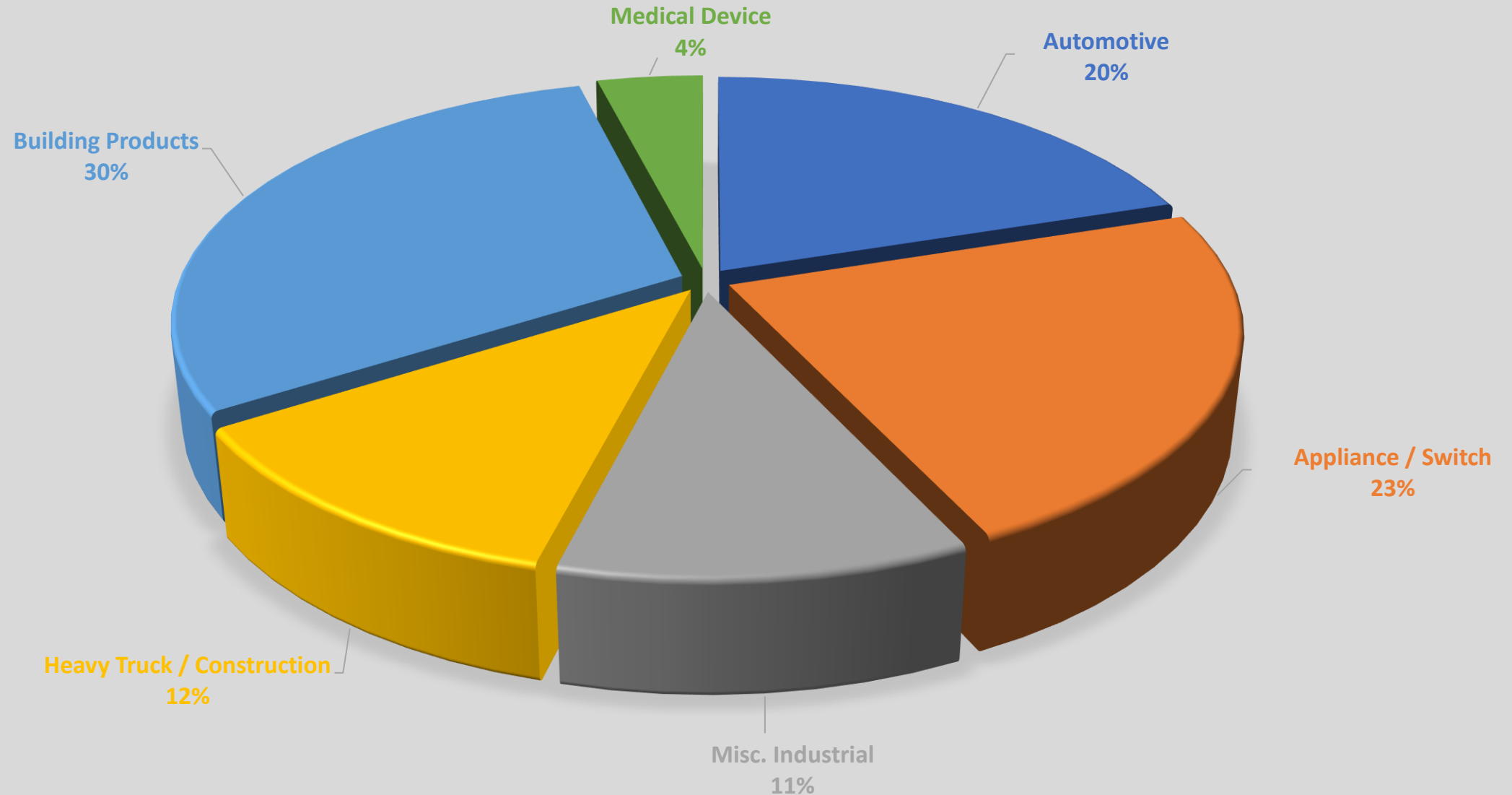
Accudyn Erie



Accudyn Chihuahua



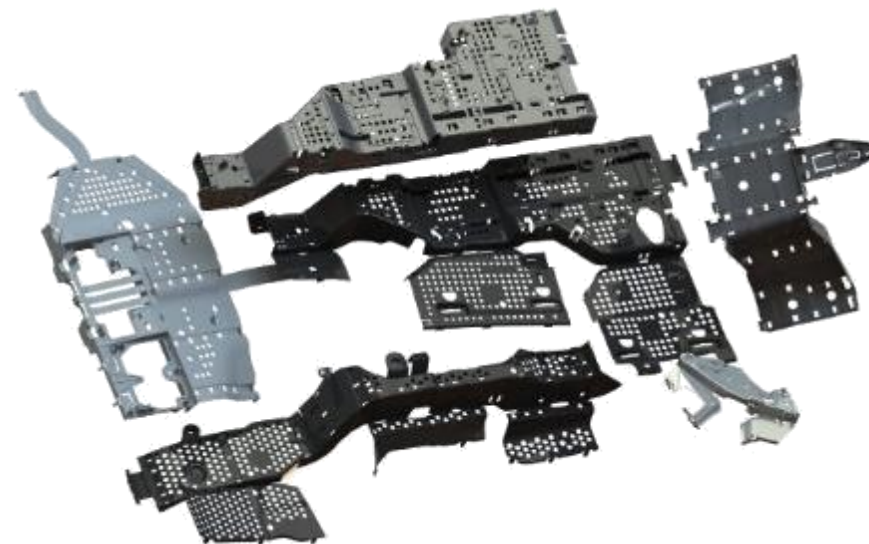
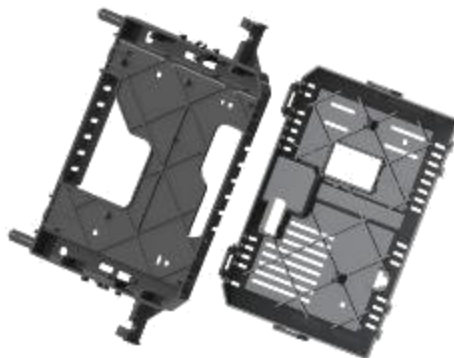
# Market Segment Diversification





Customer Diversification





# Products - Automotive

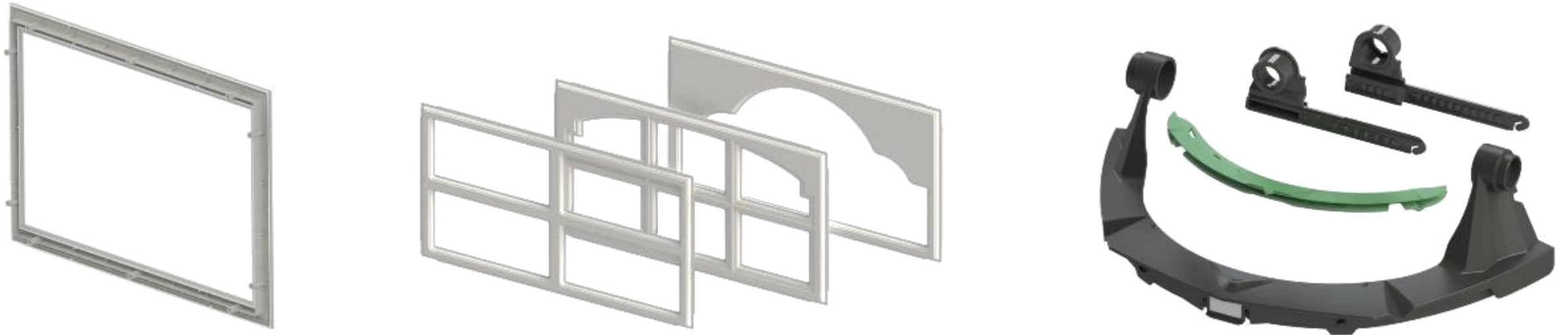








## Products - Misc. / Industrial



# Engineering & Tooling

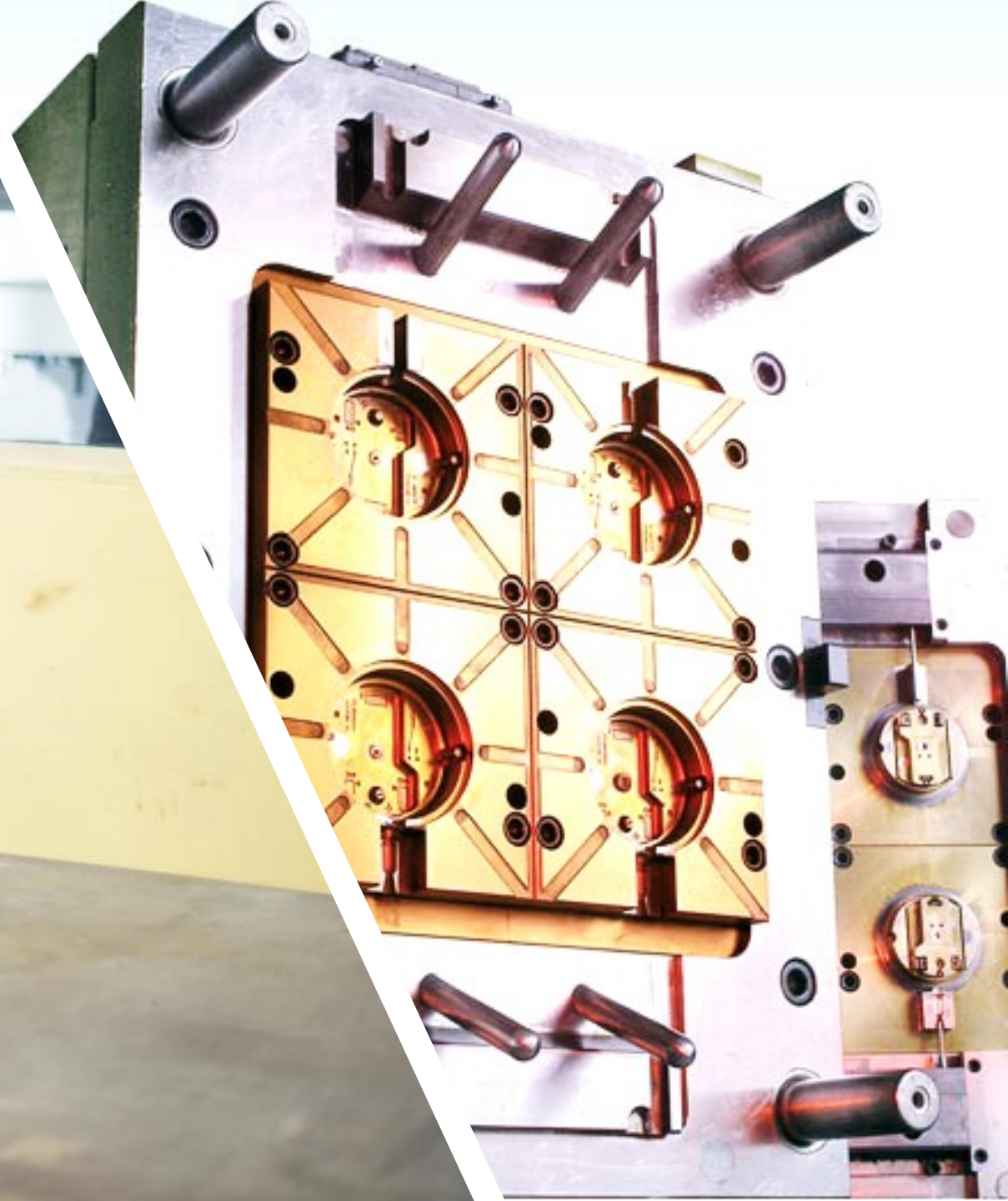
---

Overall Technical Capabilities



## Sophisticated Tooling Solutions to Meet Virtually any Customer Need

- Established Accudyn Mold & Engineering
- Decades of Tooling Expertise
- Preventative Maintenance (PM) for all Customer Tooling
- Global Tooling Partners
  - United States (Internal/External)
  - Eastern Europe
  - Asia



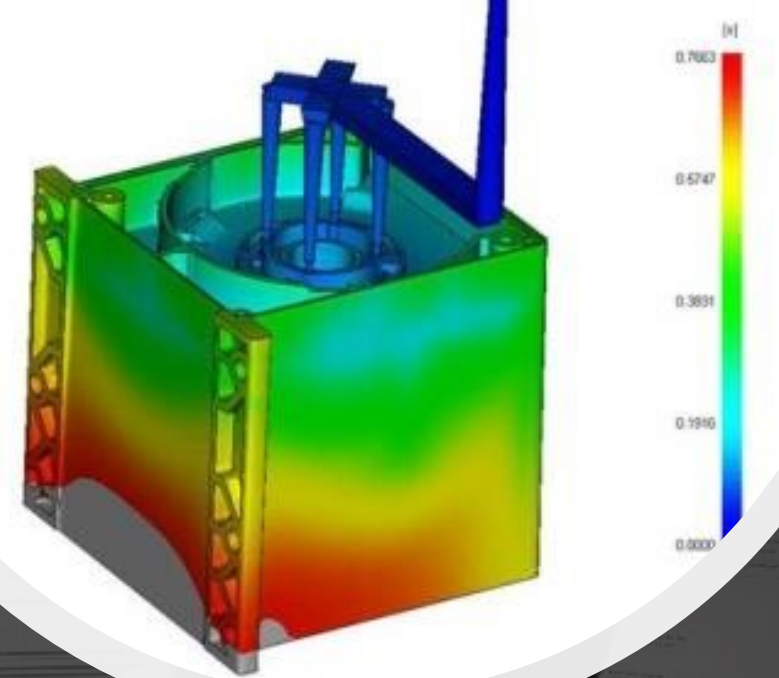
# Engineering Discipline is Integral from Design through Production

Product Development Support and Analysis

- SolidWorks Professional for Design
- Moldflow Insight Software for Flow Simulation and Analysis

Metal-to-Plastic Conversion

Program Management





## Program Management at Accudyn Employs a Systems-driven Approach that Integrates Online Collaboration, Timelines and AIAG/APQP Adherence

Cross-functional Engineering Support

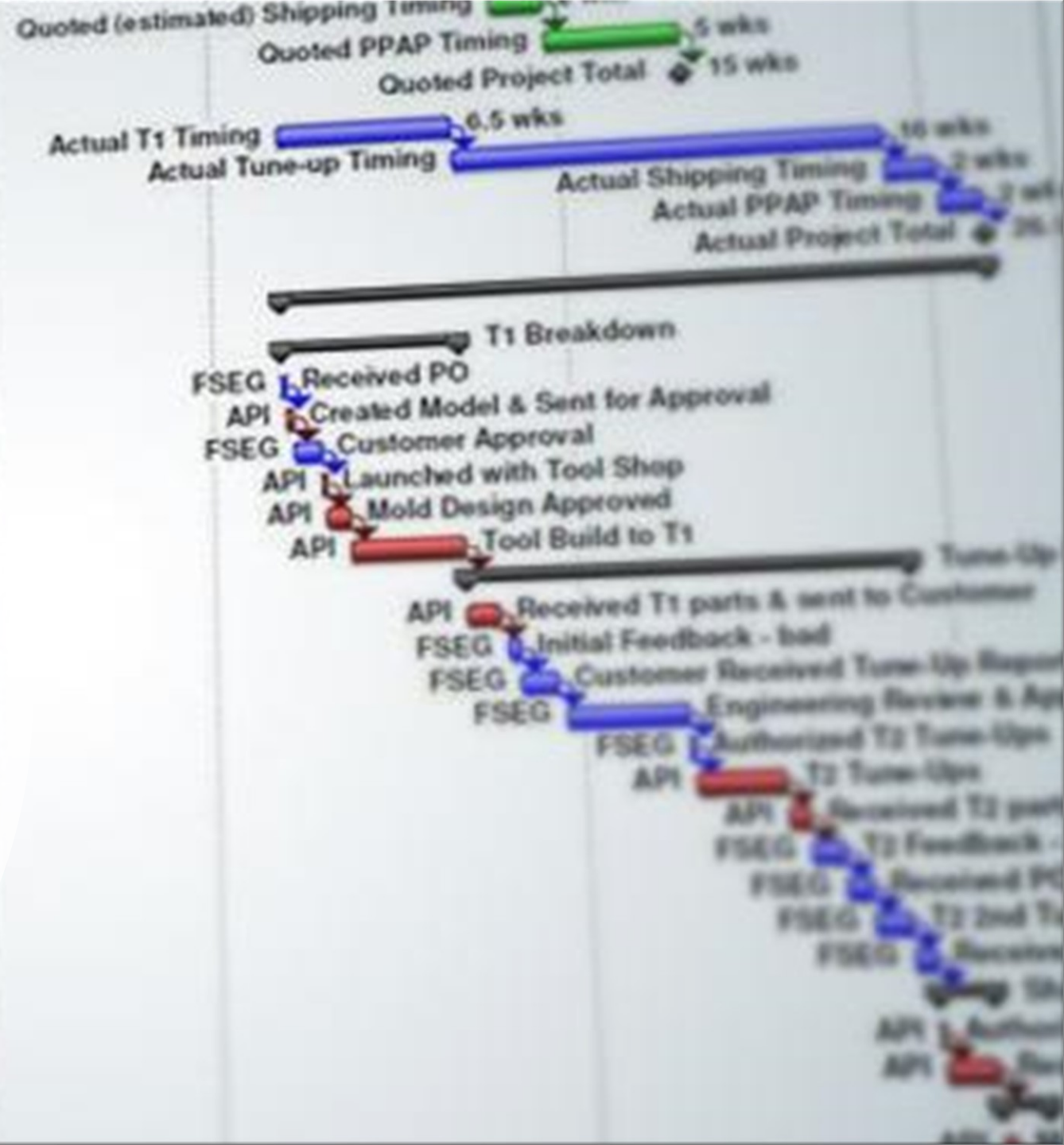
*Microsoft Project Online* Utilized to Manage  
Projects

Weekly Meetings on All Projects

New Tooling Projects Managed Through Erie  
Engineering Group

Close Communication with Plant Engineering  
Teams

PPAP and Production Readiness





# Manufacturing & Quality

---

System Driven Processes



Both Accudyn Molding Facilities Offer:

- Precision Drying Equipment for Each Machine
- Hardened Screw and Barrels for Abrasive Resins
- Scientific Molding Capabilities
- Process Alarms Integrated into Key Machine Controls
- Automation / Robotics for Insert Molding and Part Removal
- Realtime Monitoring Capabilities through IQMS

**Accudyn's System-driven Molding Processes Cover the Exacting Requirements Needed to Mold a Broad Range of Highly Engineered Resins**

# Value Added Operations

- Ultrasonic Welding
- Pad Printing / Laser Printing
- Heat-staking
- Leak Testing
- Manual & Automated Assembly
- Vision System Part Inspection
- Annealing
- Two-shot Molding
- Insert Molding





# Accudyn Quality

## Our Certified Quality Systems are Integral to our Focus on Zero-defect Injection Molding and Flawless Delivery Performance



### Database Driven Quality System

### Fully Equipped Quality Labs

- Bridge-Type Touch CMM – Carl Zeiss Contura G2
- Multi-sensor DDC 4th Axis CMM – Carl Zeiss O-Inspect 543 CNC
- Gear-pro Software – Integrated into Calypso
- OGP SmartScope Flash 1500 – Multisensor Measurement
- Keyence VL500 – 3D Part Scanning (.0004" accuracy)
- Melt Flow, Moisture Analysis, Leak Testing
- Spectrophotometer, Gloss Meter and Roughness Meter
- Full PPAP Capabilities
- IQ / OQ / PQ – Medical validation standards

# Accudyn's Value

---

Why our customers do business with us ...



# Accudyn's Value Proposition



Family Owned / Family  
Oriented Company



Customer Driven /  
Customer Focused



Process Driven  
Manufacturing Systems



Right Manufacturing  
Footprint



Engineering – Materials /  
Analysis / Design Support /  
Process Development



We are Competitive



We are Financially  
Healthy / We are  
Growing



Our Team  
Focused – Engaged –  
Responsive – Enthusiastic



Tooling – Offshore  
Options / Enhanced  
Internal Capabilities

# Future Outlook

---

Accudyn 2025

# Accudyn 2025



## **Business Development**

Expected Growth Across Multiple Market Segments  
Developing a Broader More Diverse Customer Base

## **Technology Development**

Adoption and Use of Industry Leading Technology Across  
the Company

## **Manufacturing Capacity & Capabilities**

Operational Performance, Maximizing Capacity on Current  
Assets, Implementation of New Capabilities

## **People**

Continued Encouragement of a Workforce that is  
Motivated and Understands Their Contribution to  
Accudyn's Success



[www.accudyn.com](http://www.accudyn.com)