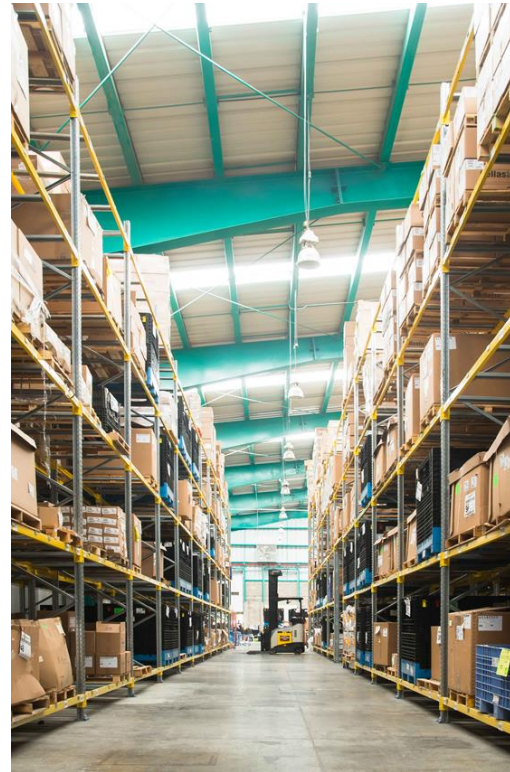


Seeräuber Automotive

An extension of your operations



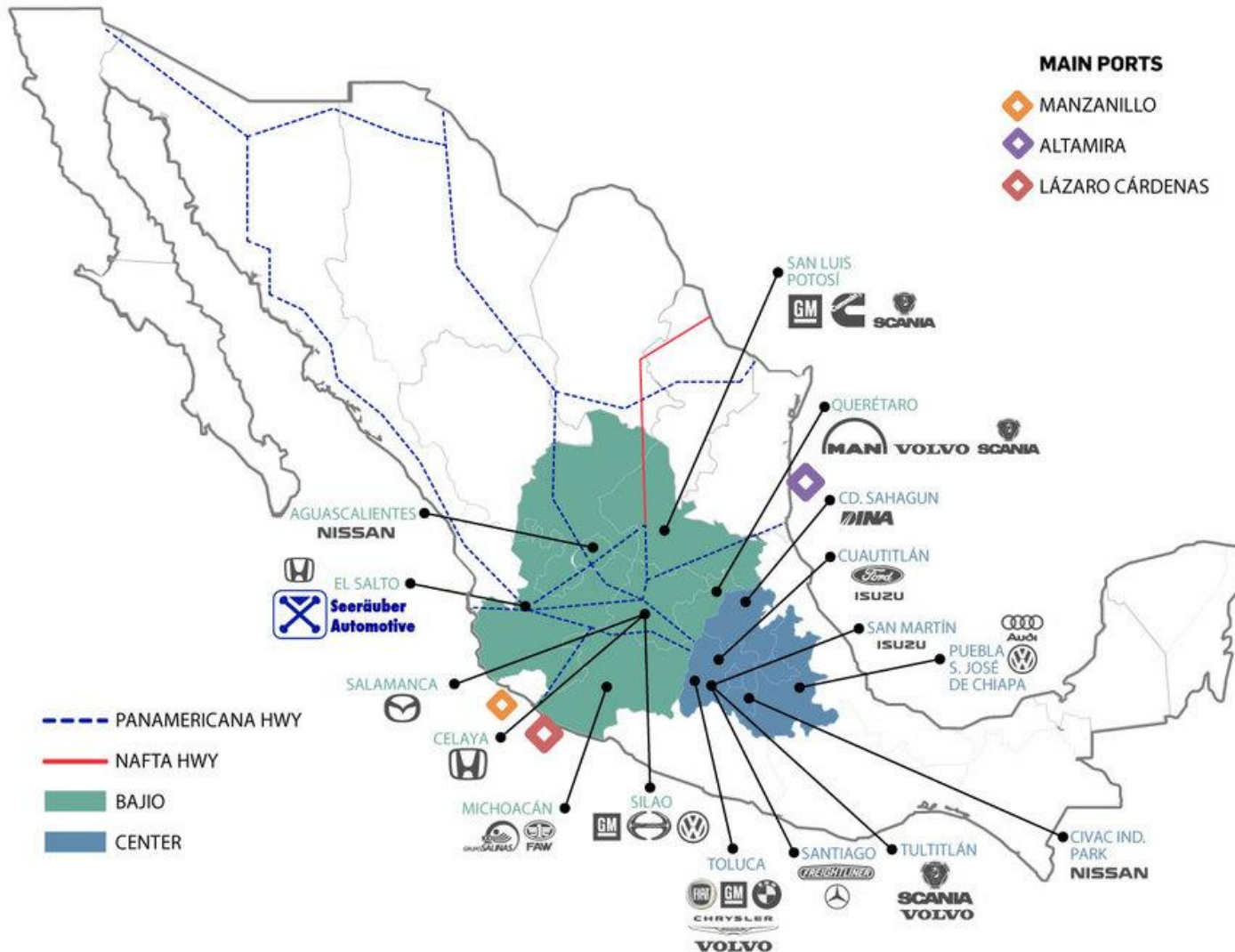
Company Profile



Seeräuber is a Manufacturing and Supply Chain Management Services company, certified in IATF 16949:2016, ISO 9001:2015 and ISO 14001:2015, established in 2014. Focused on the Regulated Industry and located within the biggest industry cluster at the center of Mexico.

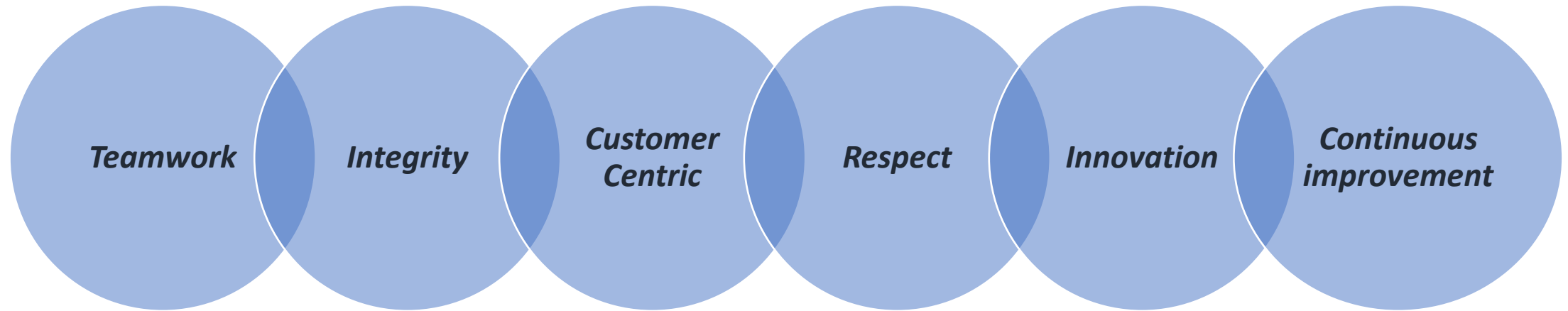
Location

Address: Circuito de la Productividad 120-18 Parque Industrial Guadalajara, Las Pintas, 45690 El Salto, Jalisco



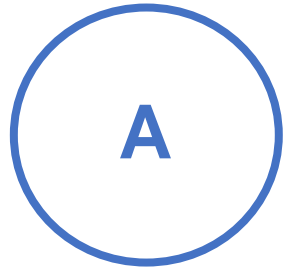
- **Located near Guadalajara International Airport, within the biggest industry cluster in Mexico.**
- **High security industrial park, alongside major companies like Benchmark, Molex and Banco de México.**
- **Proximity to OEMs assembly plants and Tier 1 suppliers.**
- **Choose Seeräuber for your manufacturing needs, benefitting from industry connections, quality, and efficiency.**

Our Mission Statement

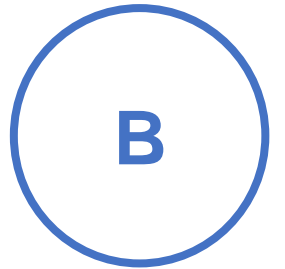


Provide high quality manufacturing, assembly and supply chain management services, which meet or exceed our customer's requirements, in a positive work environment for our people, allowing for their professional development, thus, contributing in a positive way to society and maximizing the benefits of our stockholders.

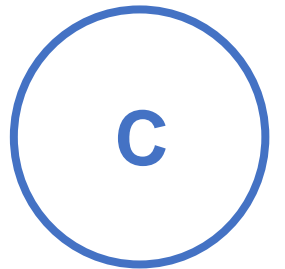
Our Value Proposition



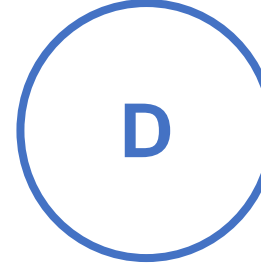
Concentrate on your core capabilities by outsourcing your assembly processes.



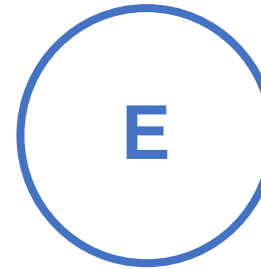
Free up your shop floor by manufacturing in an automotive grade quality certified company.



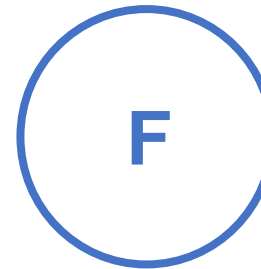
Optimize your manufacturing in a controlled environment (systems, process, quality)



Manage your product life cycle in the manufacturing area from NPI to EOL.



Develop your local supply chain with a highly connected, certified contract manufacturer.



Deal with an American registered and owned company.

Senior Management



Front Page, March 05, 2004

Founder and Chief Executive Officer

Ernesto Sánchez Proal

Previous experience:

- IBM: EA Procurement Manager.
- Jabil Circuit: General Director Mexico
- Own Companies: Design and Manufacturing Companies.
- Jalisco State Government: Minister of Economic Development.

Strengths:

- New Business Development
- Execution Assurance
- Product Realization
- Process and Quality Management
- Business Strategic Planning
- Economic Development Strategy

Achievements:

- National Quality Award 2006
- National Export Award 2002
- National Labor Award 2005
- State Quality Award
- 2003 State Export Award
- 2002 Empresa Incluyente
- 2004 AmCham Innovation Award 201



Quality Management System



- **IATF 16949** is a global Quality Management System Standard for the Automotive industry. IATF 16949:2016 incorporates the structure and requirements of the **ISO 9001:2015** quality management system standard with **additional** automotive customer-specific requirements. It was developed by the International Automotive Task Force (IATF), with support from AIAG.
- **IATF 16949:2016** is an independent QMS standard that is fully aligned with the structure and requirements of **ISO 9001:2015**. Therefore, the IATF 16949 cannot be implemented alone as a stand-alone document but must be implemented as a supplement and in conjunction with ISO 9001:2015.
- **Seeräuber Automotive** currently holds ISO 9001:2015, IATF 16949:2016 and ISO 14001:2015 certificates.



Certification Number: 74 700 1515.



Certification Number: 74 800 1860.



Certification Number: 01 111 1630161.

Certificate IATF Number: 0268467.



CMMISVC/2SM
Exp. 2023-02-27 / Appraisal #6017

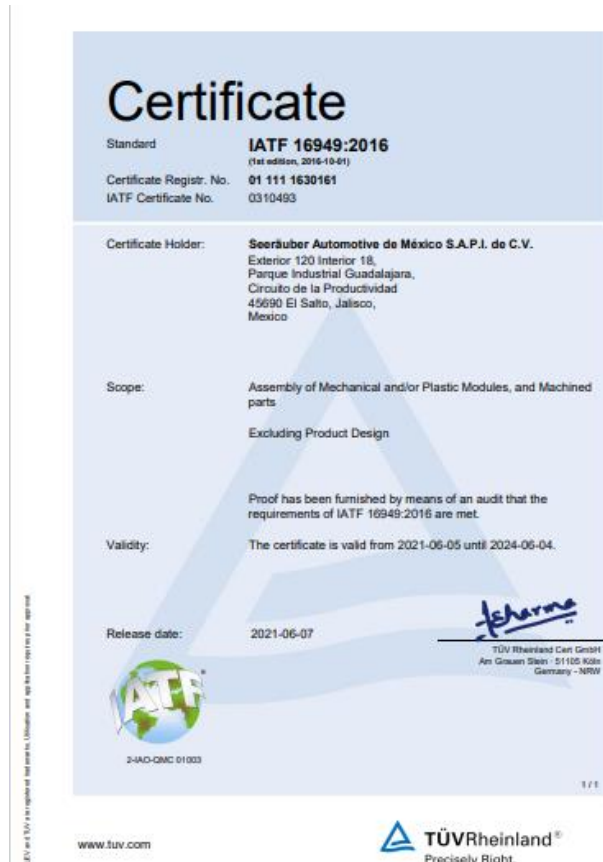


International Automotive Task Force

Certificates



ISO9001 - 2015

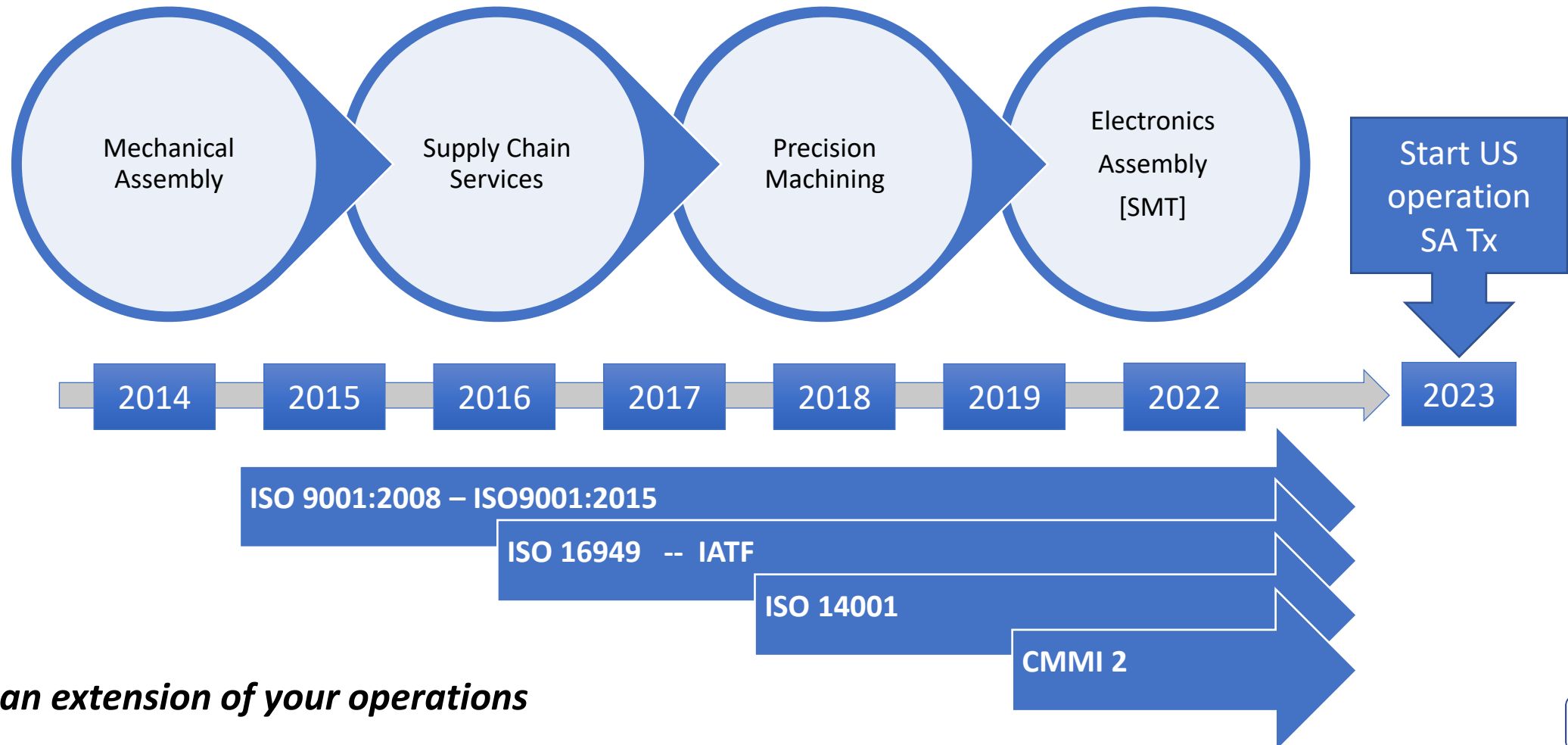


IATF 16949 - 2016



ISO 14001- 2015

Business Development Strategy



We are an extension of your operations

Business Development Strategy

Head Quarters
Marketing, Logistics
and Finance

Seeräuber
Automotive LLC

FUTURE HQ

Currently incorporated and starting operations for new customers

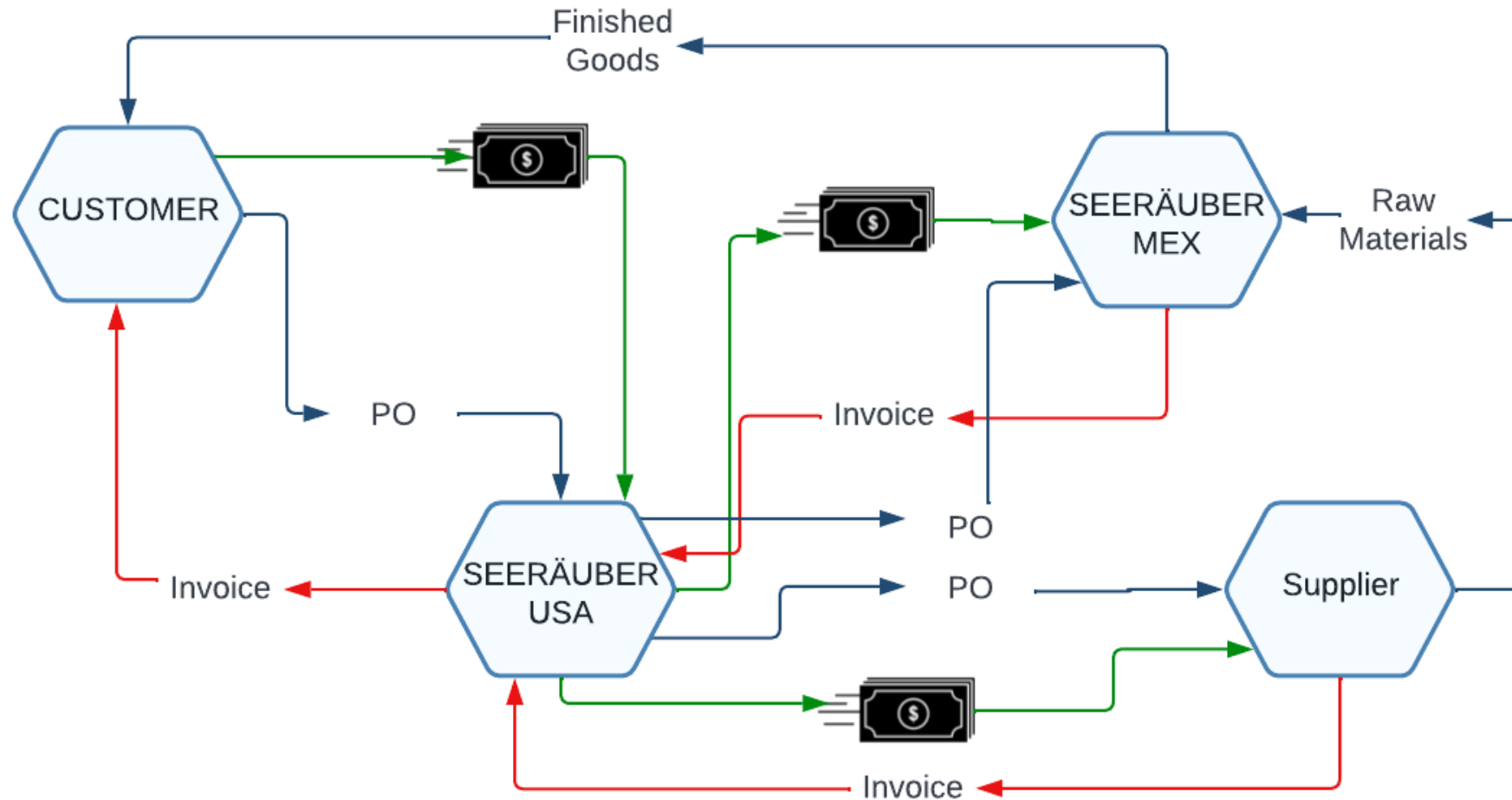
Manage resources for Mexico operations and **future engineering and technology services .**

Manufacturing,
Supply Chain and
Engineering Services.

Seeräuber
Automotive
Mexico

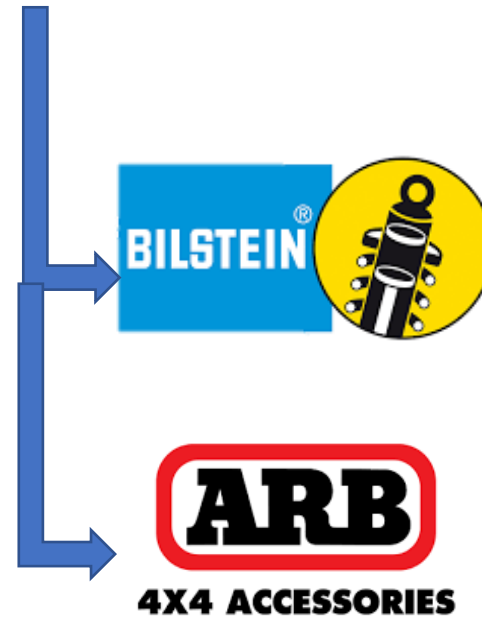
Contract manufacturing and supply chain management services for the corporation

Available Export Scheme

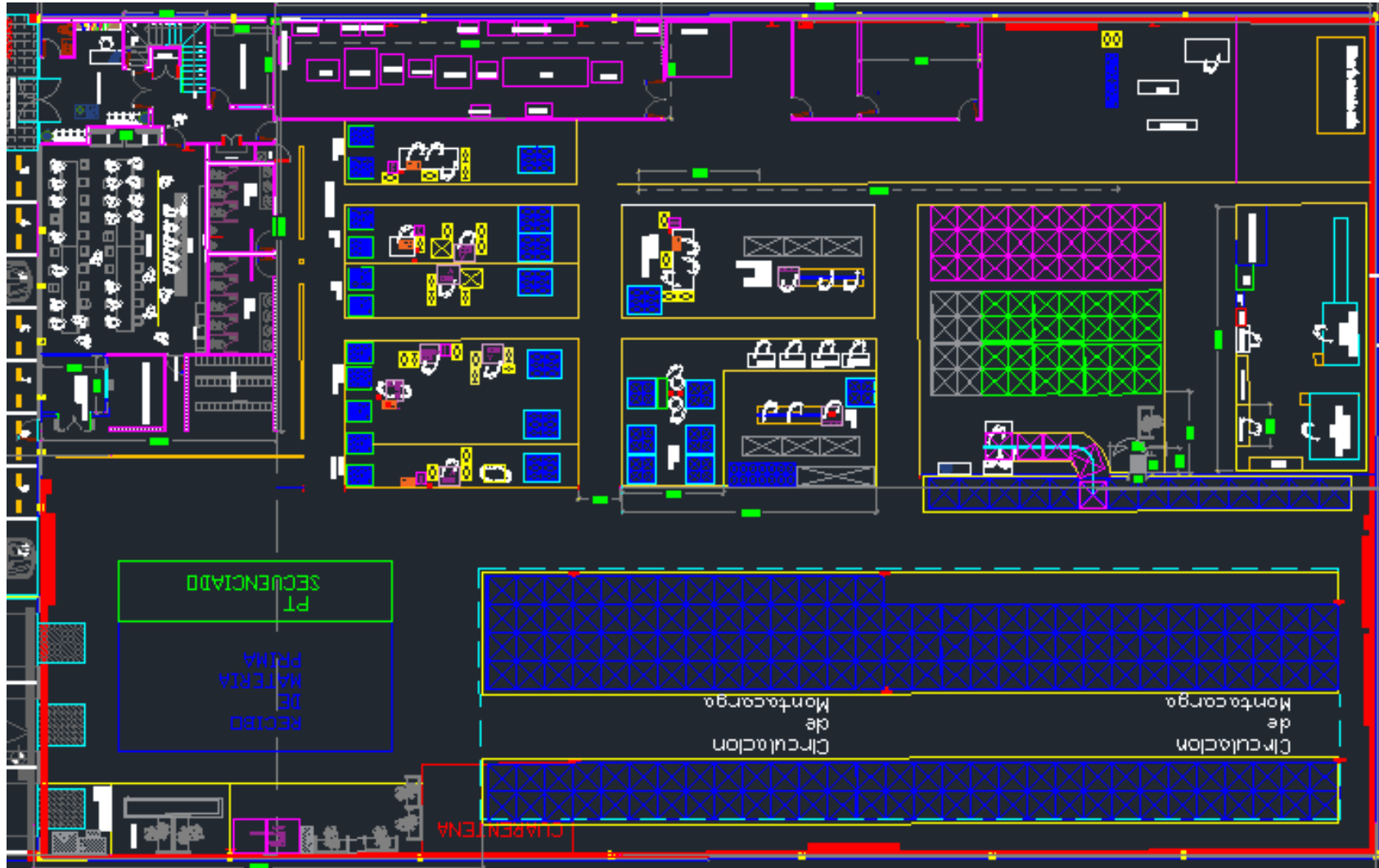


Export scheme currently in use with selected customers.

Our Customers



Plant Layout



- ▶ Production 1200m²
- ▶ Warehouse 750m²
- ▶ Receiving 325m²
- ▶ Office 220m²
- ▶ Docks 3

Mechanical Assembly Capacity

Automotive-grade quality processes and systems
(IATF, ISO 9001)

Process development for mechanical and
electromechanical assembly

Flexibility to assemble and configure parts using
Lean Manufacturing



We are an extension of your operations

Precision Machining Capacity

SWISS TYPE TURNING YAMA SEIKI SW32 *Bar Feeder Equipped*

High precision turned parts for any industry, such as bushings, shafts, bolts, guides among others.

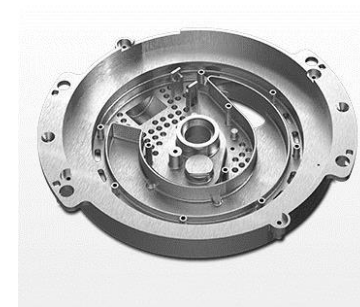


Diameters up to 32 mm.
Lengths up to 315 mm.
Tolerances down to 0.0002 in.



HAAS VF3 CNC MACHINING CENTER

Parts with non-cylindrical shapes such as bases, molds, pieces with irregular finishes, among others.



Lengths up to 1016 mm.
Heights up to 508 mm.
Tolerances down to 0.001 in.



CNC Quality Assurance

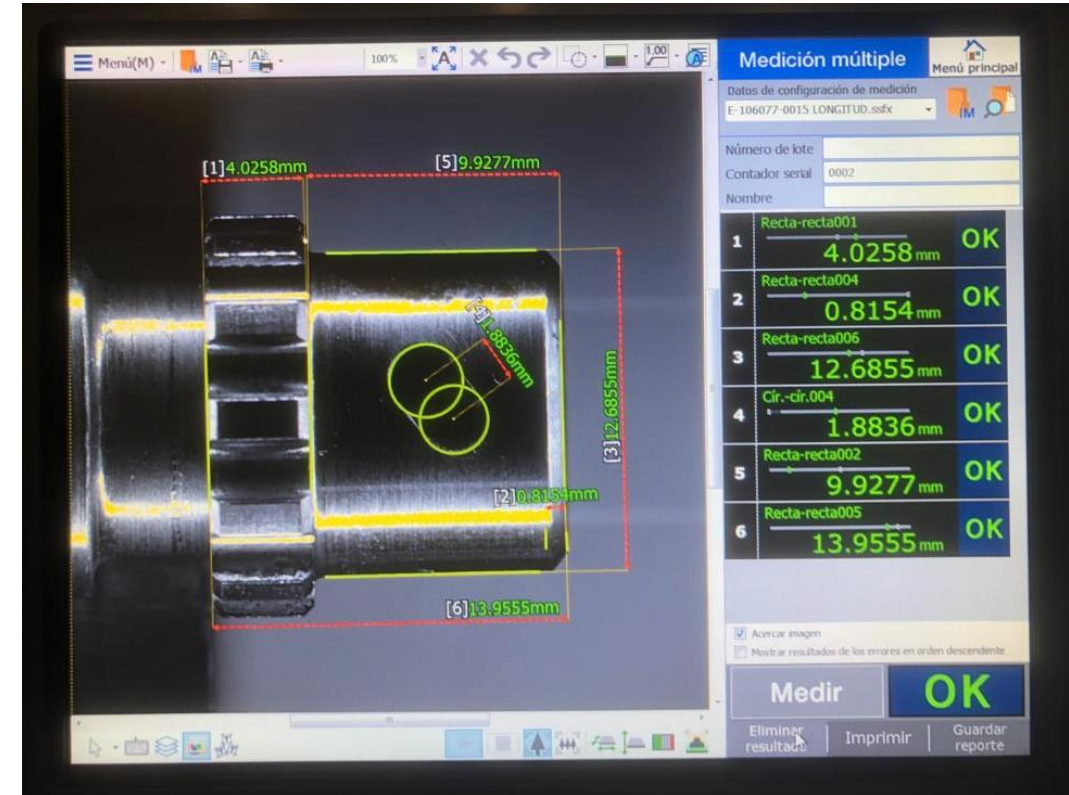
Seeräuber ensures quality and accuracy of CNC machining operations

Key aspects:

- Inspection and Measurement
- First Article Inspection (FAI)
- Statistical Process Control (SPC)
- Documentation and Traceability
- Corrective and Preventive Actions (CAPA)
- Continuous Improvement
- Compliance with Standards

Keyence Optical Comparator:

- Enhances CNC Quality Assurance
- Advanced optical measurement system
- Provides precise dimensional measurements
- Enables quick and accurate comparisons with CAD data
- Non-contact measurement for delicate or sensitive parts
- Enhances inspection efficiency and accuracy
- Integrates with CNC quality processes for streamlined operations



Keyence Optical Comparator

Electronics Assembly Capacity

Fully automated SMT assembly line.

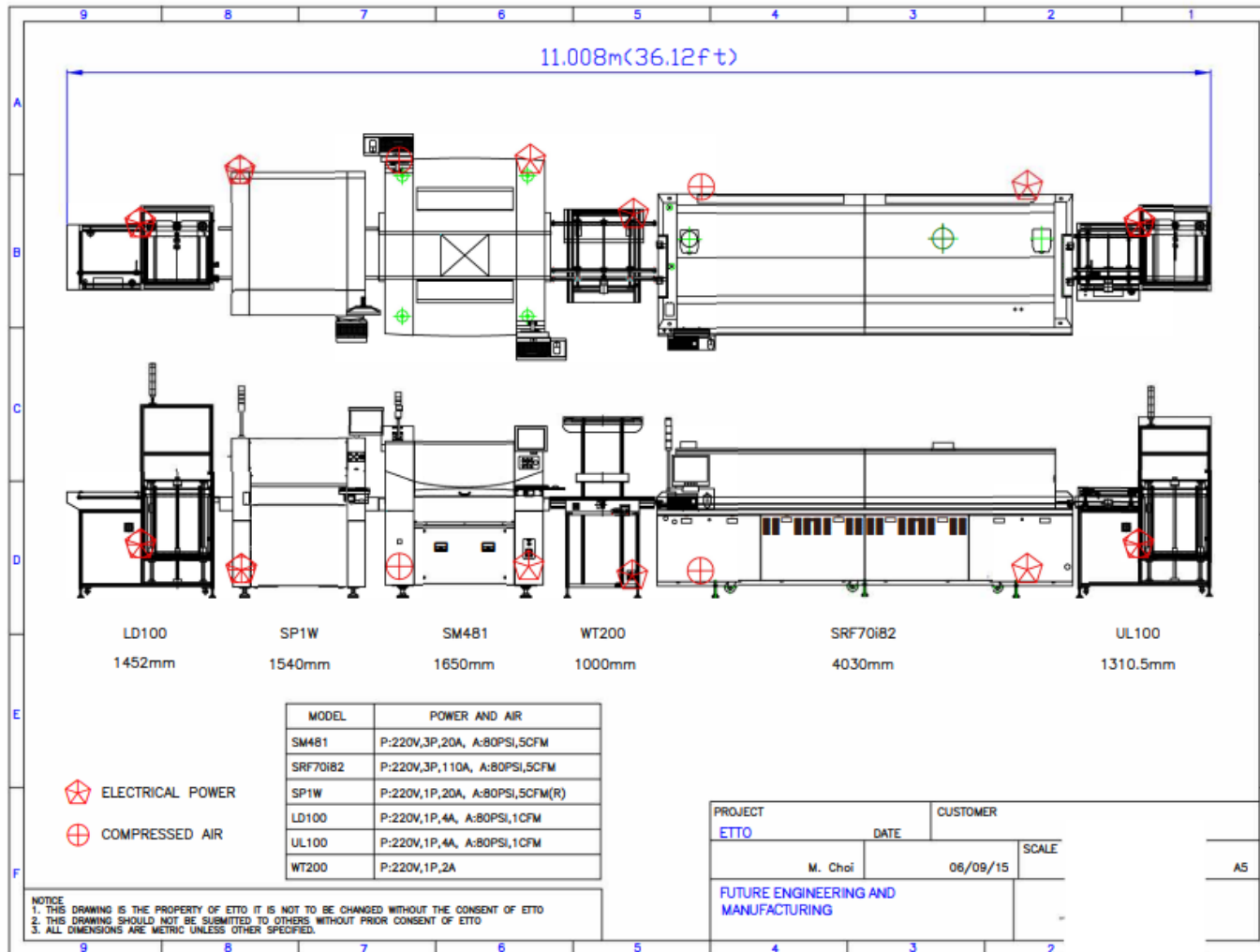
Printing Accuracy: $12.5\mu\text{m}@6\sigma$. Automatic
Stencil Position Setting /
Advanced Software Interface

Up to 38k CPH throughput, wide range of
board sizes. Single/double lane capable.

Complete Board Handling Solution ensuring
touch-free process.



Electronics Assembly Capacity

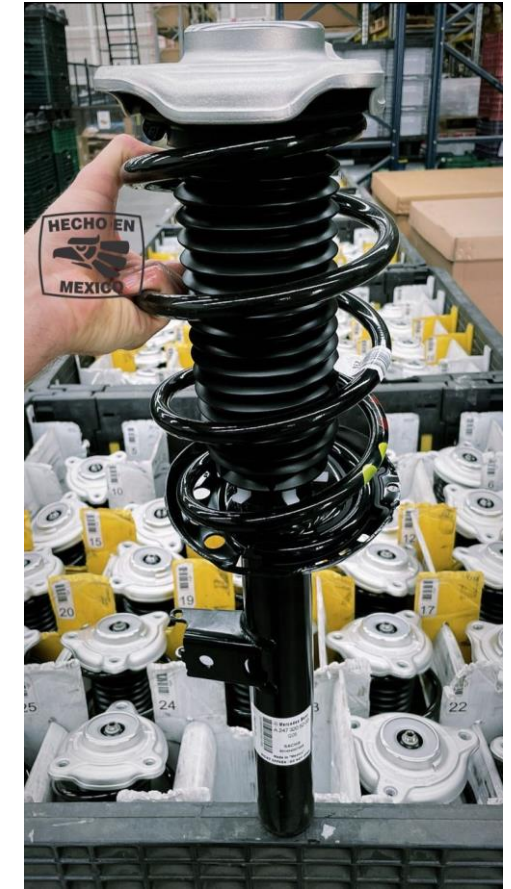


- Pick & Place: **SM481**. *Performs high-speed placement of chips at 38,000 CPH and QFPs at one per 1.1 seconds.*
- Samsung SM481 High Speed Flexible Chip Mounter
- Samsung SRF70i82 Reflow Oven
- PDT Tech NPS510 Screen Printer
- Samsung LD-300E Handling System
- Samsung UL-300E Unloader
- Samsung WT-200XLE Advanced Flexible Chip Mounter
- Ingersoll-Rand SSR-EP30SE Air Compressor

Examples of current products/services



► Modular Assembly



► Sequencing Service

Examples of current products/services



► Precision Machining

Examples of current products/services



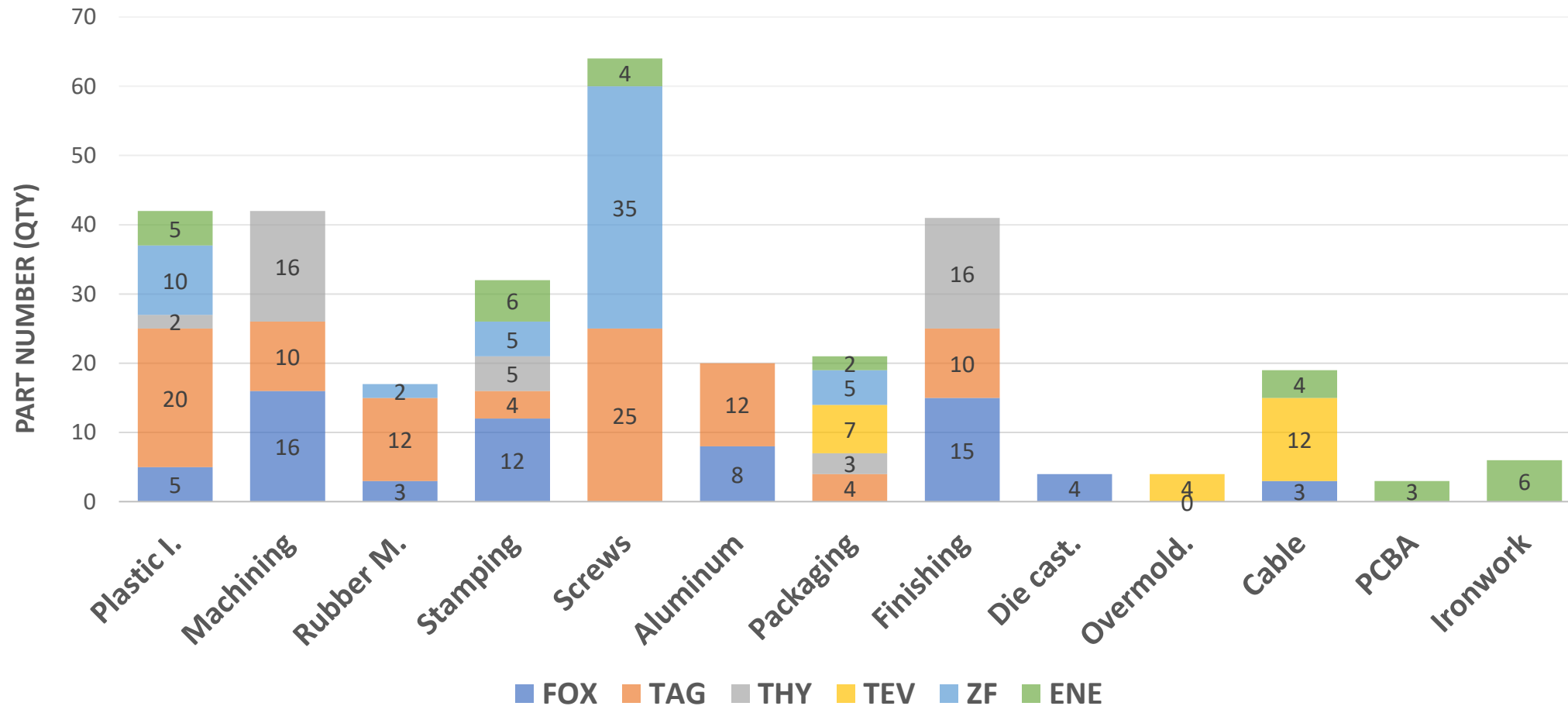
► Precision Machining

Supply Chain Management

- Customer interface: Supply-On (EDI and performance reporting)
- ERP: SAP B1
- Access controlled warehouse for parts and Finished goods
- Supplier Management, Component Acquisition, Logistics,
- **Re-packaging and Kitting.**
- **Sequential delivery.**
- Supply chain development.
- IMMEX program in process.



Supply Chain Development



We are an extension of your operations

Supply Chain Reengineering

Product development and reengineering services

Purpose: ENABLE NEARSHORING

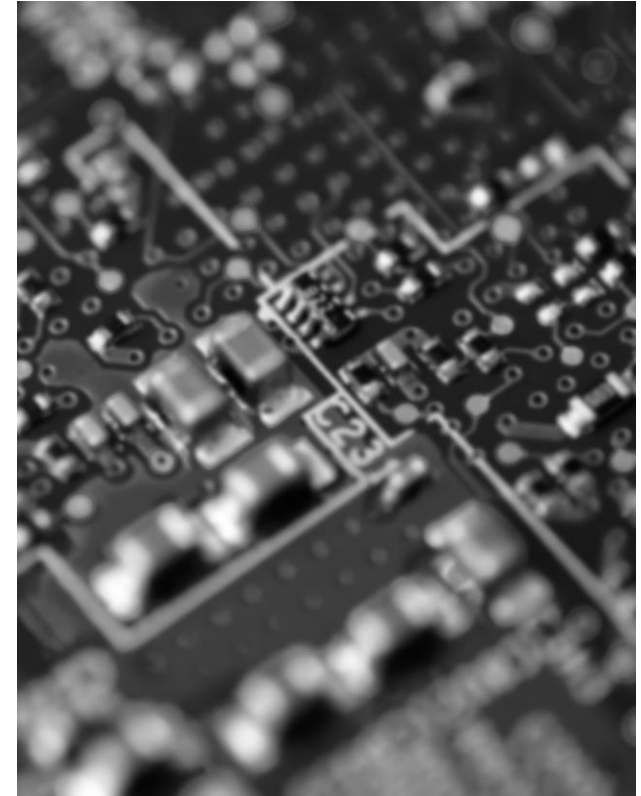
- Complement / create missing data
- Adapt design to North America's supply chain.

Design services scope:

Mechanical

Electronic and electrical

Software design



We are an extension of your operations

TurnKey Finished Projects

- **Tonneau Cover Project:**
- **Relocalization Project from China**, missing documentation.
- **Exported to the USA**, finished product.
- **Process Designed from Scratch.**
- **Turnkey Product Development:** Plastic Injection Molds, Aluminum Extrusion Molds, and all supply chain (Adhesives, FPR Panels, rubbers and others) developed in Mexico



Thank you



An Extension of your Operations

Business Development and Quotations Department

Contact us at: info@seerauber.com

Address: Circuito de la Productividad 120-18 Parque Industrial Guadalajara, Las Pintas, 45690 El Salto, Jalisco, México.

www.seerauber.com