



Mold Makers International Inc.

“Best cost tooling solutions”
Manufacturer of Automotive Plastic
Molds and Fixtures

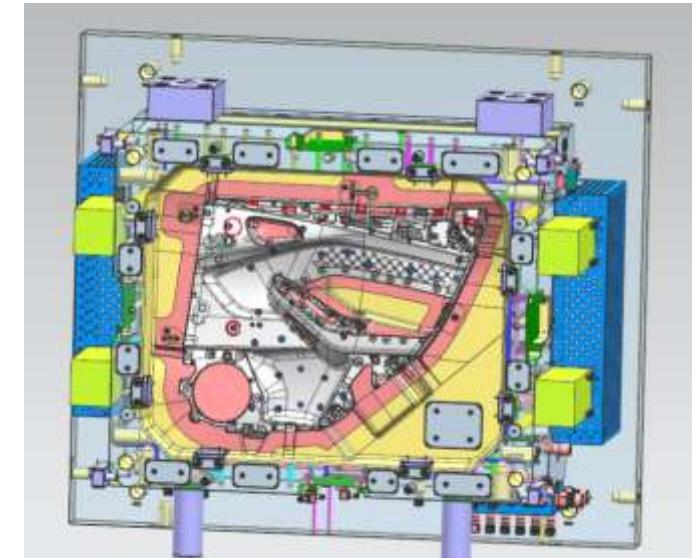
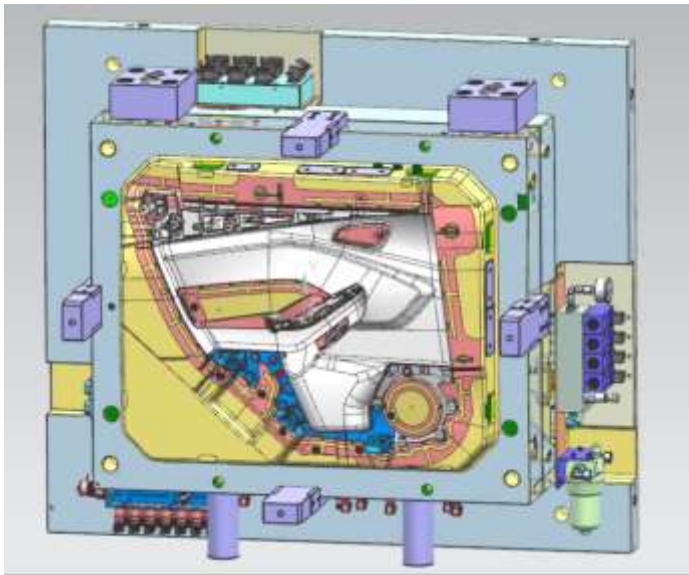


- Turn Key supplier of Best cost tooling
- MMI operations
 - Consist of North American engineering, project management and quality systems
 - Partnerships in China, North America and Europe for tooling and fixture manufacture and service
- Chinese joint venture partnerships for tooling and Fixtures
 - Exclusive representation of Kaihua Automotive Tooling capacities
- MMI partnerships
 - Are Built based on our collective strengths
 - Successful in design, management, manufacture and delivery of best cost tooling and fixture solutions to North American and European Standards



MMI Plastic Injection

- Standalone tooling company which supplies molds and fixtures for the world's major plastic part suppliers.
- VW, GM and Nissan approved tooling source
- MMI is built based on 35 years of experience in Canadian mold manufacturing in Windsor, Ontario.



MMI Plastic Injection

- MMI's approach is the melding of our North American engineering and design experience with the powerful Chinese low cost manufacture
- MMI's North American engineering group improves and develops tooling concepts which result in cost effective and durable solutions for part manufacturing processes



MMI Plastic Injection

- MMI offers a complete tooling and fixture package
- Experienced in managing entire projects from tool feasibility to part approval



DAIMLER TRUCK A-PILLAR



DAIMLER TRUCK B-PILLAR

MMI Plastic Injection

- MMI organization consists of:
 - Experienced NA engineering, design and program management
 - NA quality and management systems
 - Joint venture partner Kaihua with a well trained and managed low cost labor force with state of the art facilities and equipment in China
 - International tryouts and qualification services
 - On site international tooling support services
 - Full time MMI employees in Canada, Mexico and China
 - Engineering changes, repairs and warranty services
 - North American and China molding and assembly
 - Developing European Partnerships





Asian tooling partnership

Supporting Canada, Europe, USA, Mexico and South America

- MMI Joint venture supplier of molds, fixtures, prototype and low volume
- Specializes in molds for interior and exterior trim, bumpers, instrument panels, door panels and under the hood components
- ISO 9001:2008 certified
- 150,000 m2 in 3 facilities
- 2022 sales net \$160M USD
- 2400 molds per year
- 1200 Employees

Antonio S.D.





- Full time program managers employed in China with Canadian training
- Our process technicians travel to China to sign off final tryouts
- The same process technicians will re-trial molds in NA or Europe



Strategy Guide – Core Values

企业核心价值观 Enterprise core values

• 诚实正直	Honesty & Integrity
• 信任和尊重个人	Trust and respect individuals
• 不断创新	Continuous innovation
• 注重业绩	Focus on performance
• 追求卓越	Pursuit of excellence
• 重视态度和细节	Attention to attitudes and details

MMI Plastic Injection

- MMI manages the all aspects of the tooling development
- We manage the joint ventures partners and all logistics
- Our organization has successfully produced best cost tooling for North America, Europe, Mexico and Colombia amongst others
- Engineering support and service for all changes and warranties available at all locations where our molds and fixtures are used



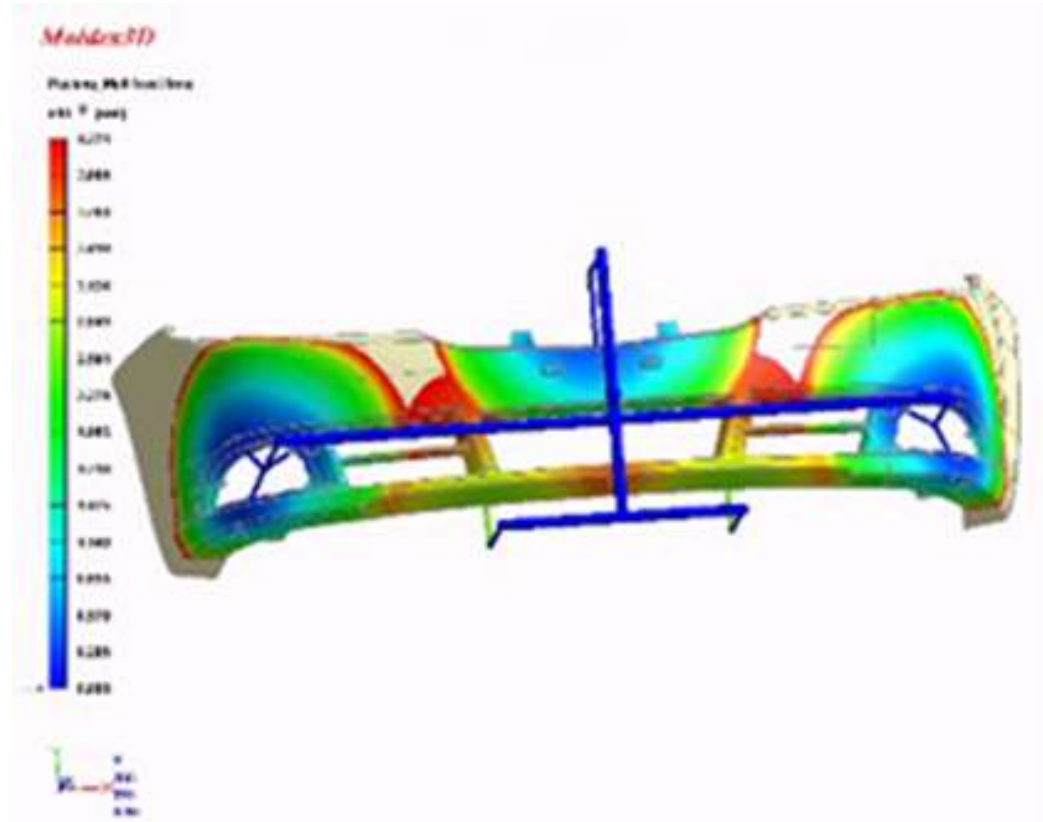
VW TIGUAN SEAT FITTING TRIM



GM K2XX SEAT SIDE SHIELD

MMI Plastic Injection

- Reverse Engineering
- Romer Arm scanning and part inspection
- Mold flow & Part Distortion evaluation
- We offer Part to Print with Windage Implementation



MMI Plastic Injection

- Prototype and low volume molds
- 2 shot and 3 shot multi material molds
- Systematic control of the complete manufacturing cycle
- North American, Asian, European and Mexican tryout services



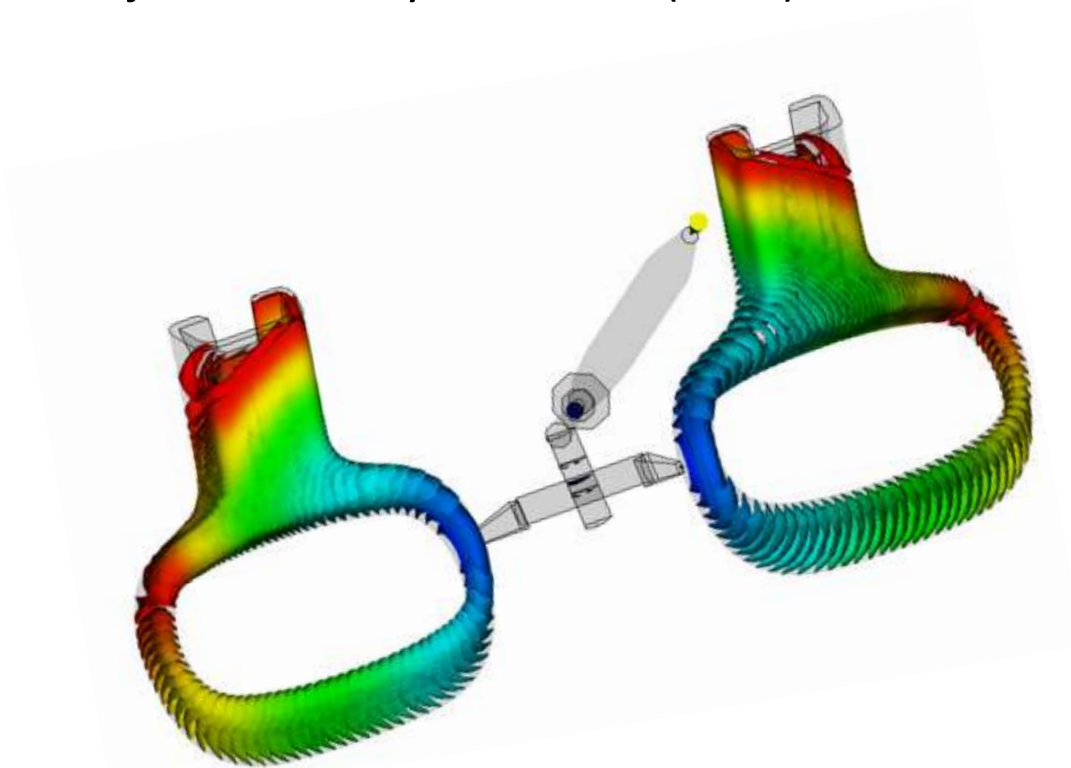
MMI Plastic Injection

- Plastic injection molds from 100tn to 4000tn



MMI Quality assurance

- Mold flow analysis on all molds (20 Autodesk Stations)
- OEM and tier one mold standards review and implementation
- NA and EU brand components and manifolds
- Project feasibility at kick off (DFM)



- 60 UG and 3 Catia Design Platforms
- Quality planning
- Open issue tracking
- MS project timelines
- On time mold and fixture delivery and tracking
- Continuous improvement – Lessons learned
- Portable on site inspection services
- NA or EU plastic shipped for all trials
- Tryout reports with photos and video
- Weekly visits and tracking by MMI employees in China
- Japanese or German steel per customer exact material specifications
- 100% compliance with customer specifications



MMI Plastic Injection



MMI Production Alliance

- PAPP has a Querétaro, Mexico facility
- 300tn to 4000tn press size available
- Part production and mold tryouts
- MMI Mold Service area



MMI Fixtures and Automation

- Best cost high quality fixture development
- Joint venture partner (Taizhou Huangyan Rixing)
- Check fixtures
- Assembly fixtures
- End of arm tooling
- Automation

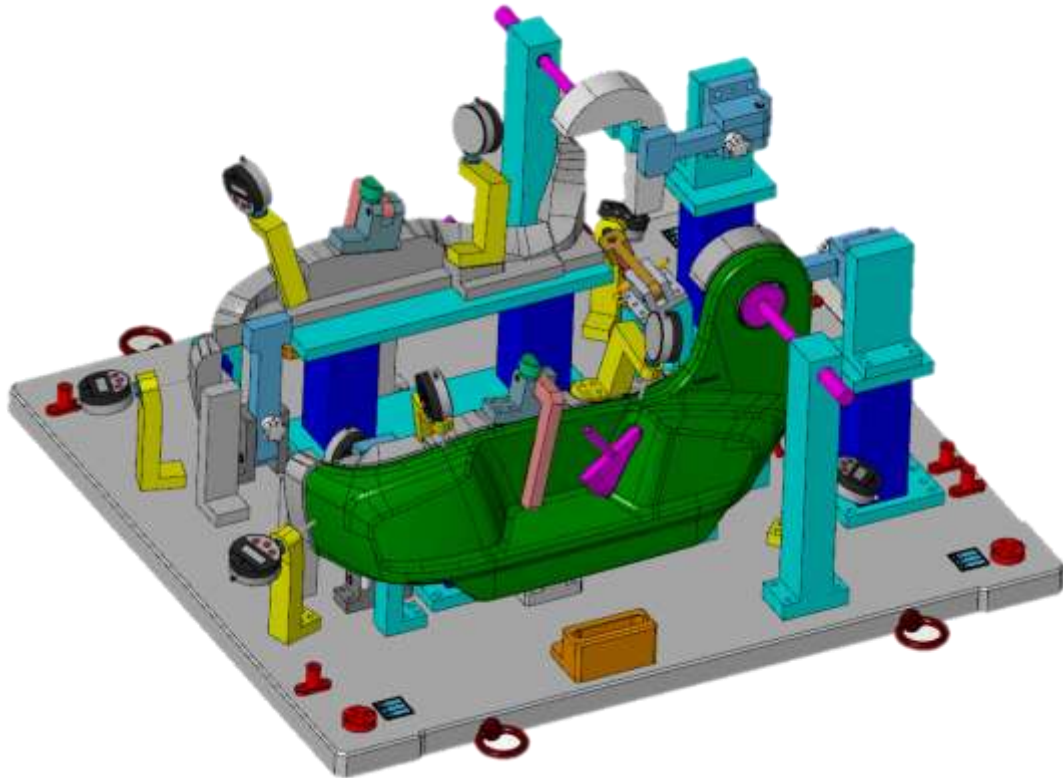


MMI Fixtures and Automation

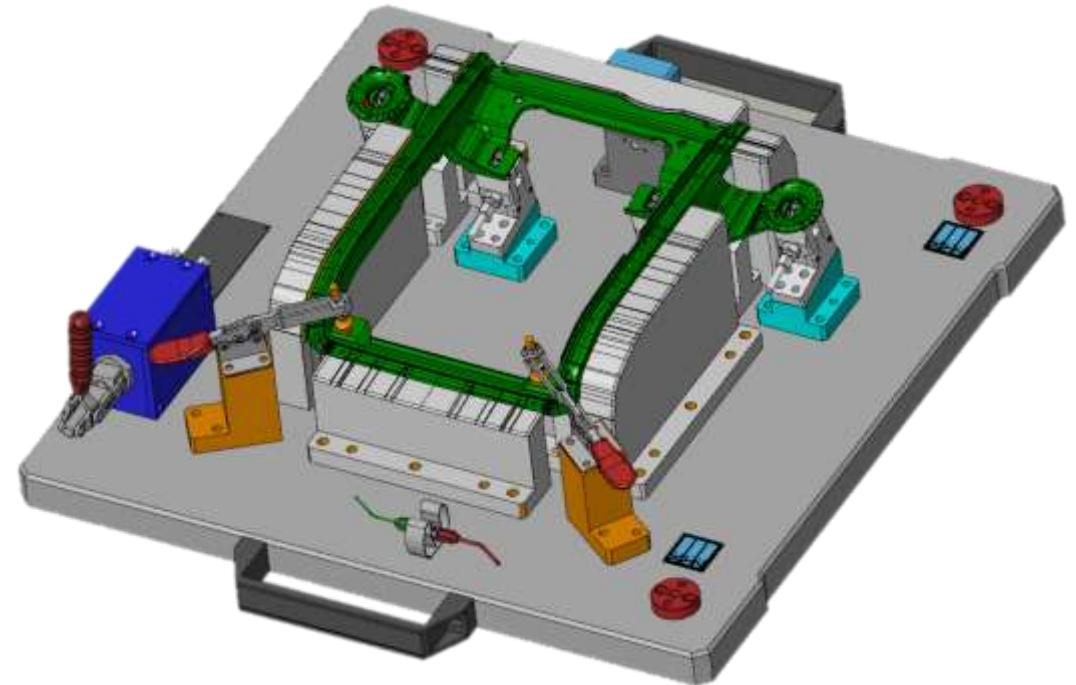


Antonio S.D.





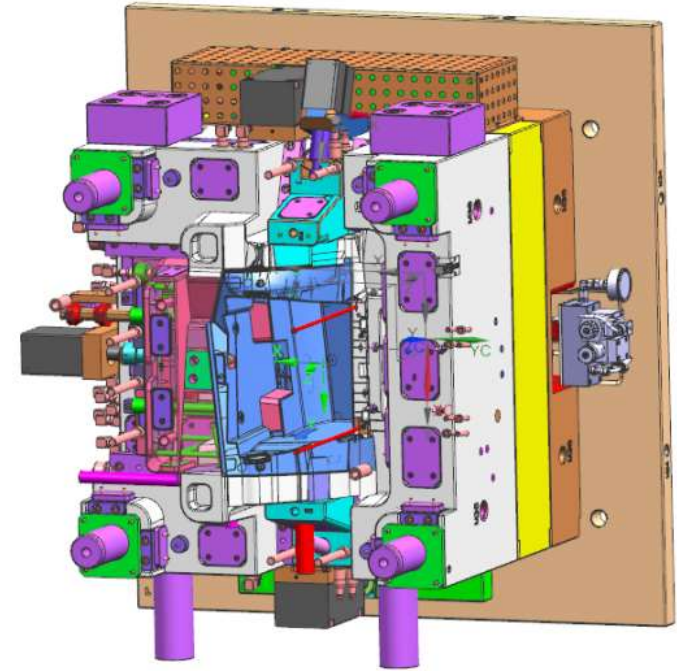
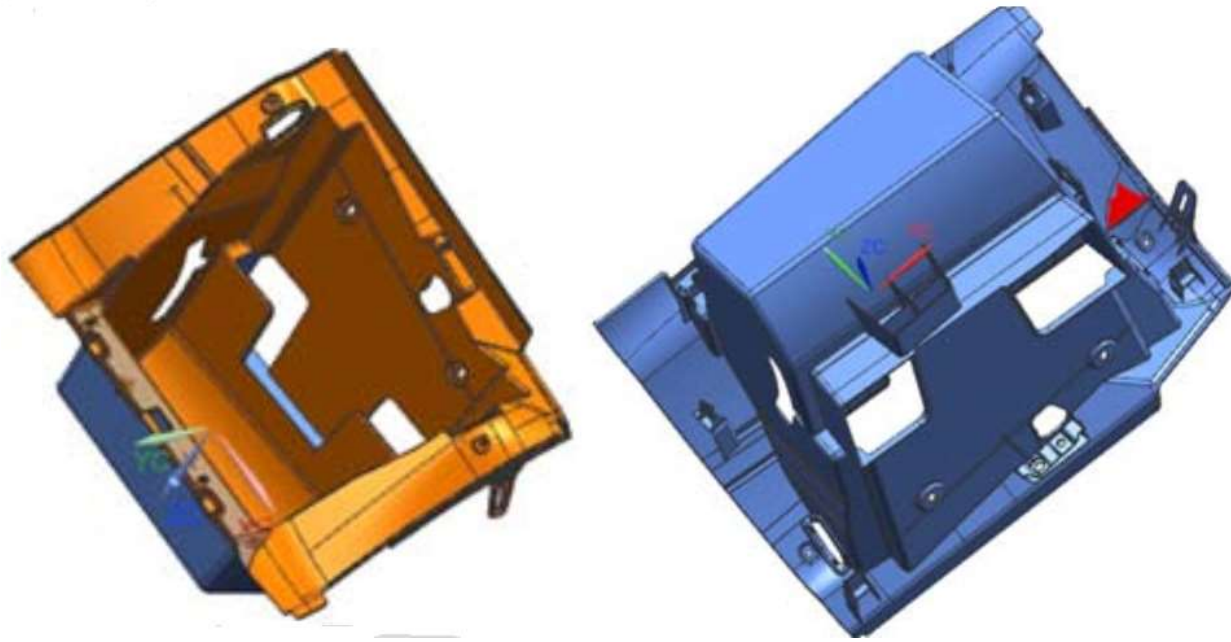
Tiguan Side Shield Fixture



Jetta Console Fixture

Antonio S.D.





MMI Plastic Injection





MMI Plastic Injection



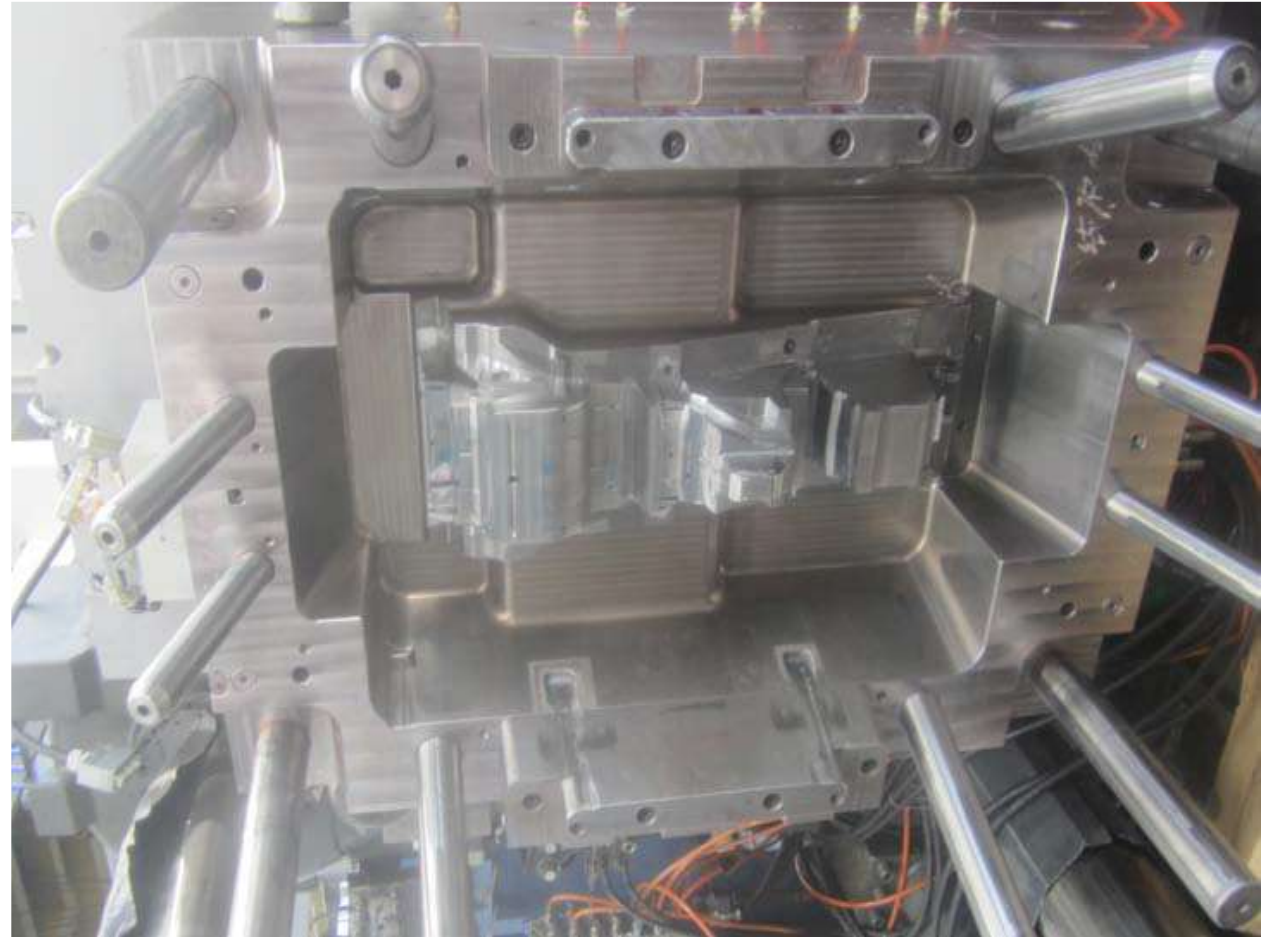
MMI Plastic Injection



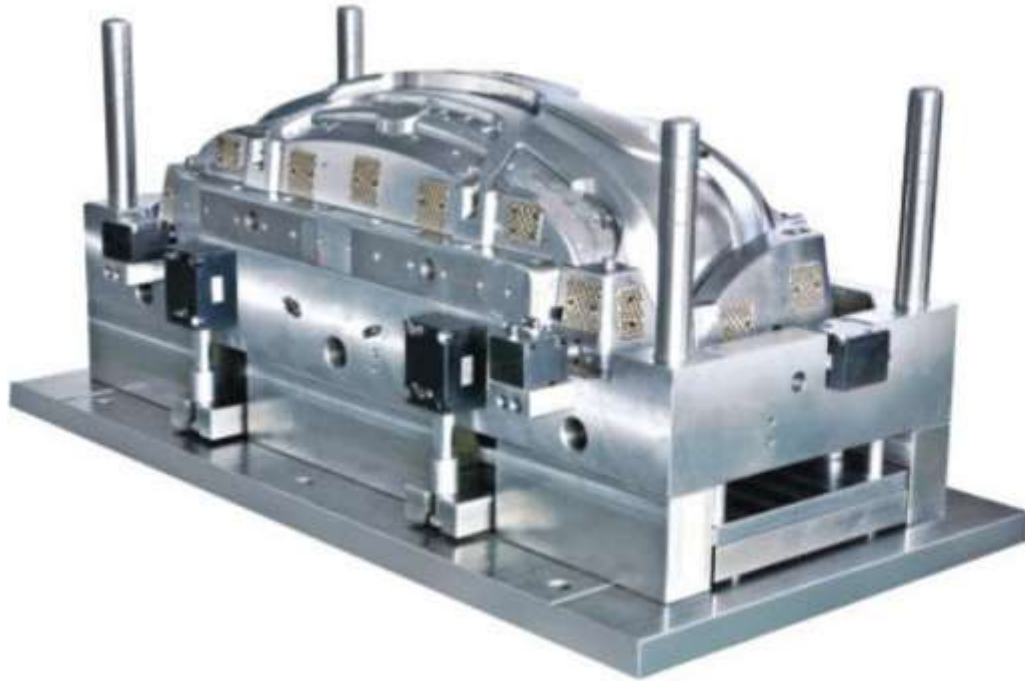
MMI Plastic Injection



MMI Plastic Injection







GM M300 REAR BUMPER



TOYOTA 920 PROTECTOR BED RAILS



VW326 ATLAS DOOR COVERS



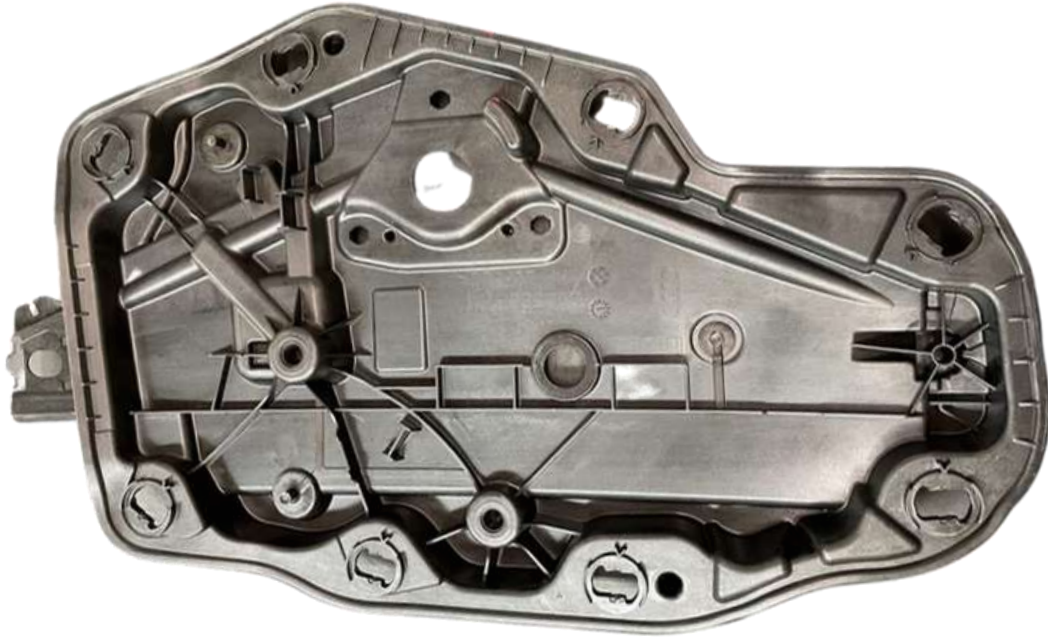
VW326 ATLAS FRONT & REAR DOOR COVERS



VW WHEEL HOUSING LINER FRONT TIGUAN PA



Nissan PO2F Cooling Assembly



VW 316 Door Carrier Front



VW 316 Door Carrier Rear



LUCID FRUNK TRIM COVER 2-MATERIAL



LUCID UNDERBODY DIFFUSER



NISSAN TSURU FENDER PROTECTOR



CHRYSLER DT BRAKE PEDAL SUPPORT

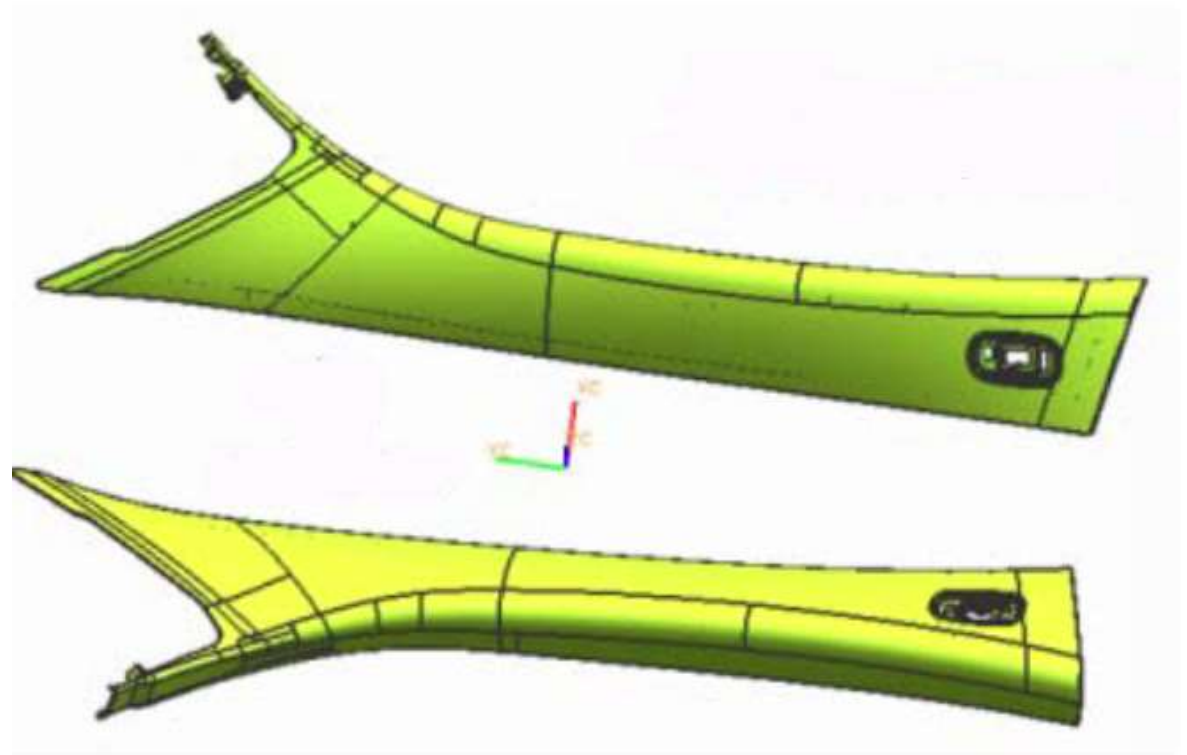
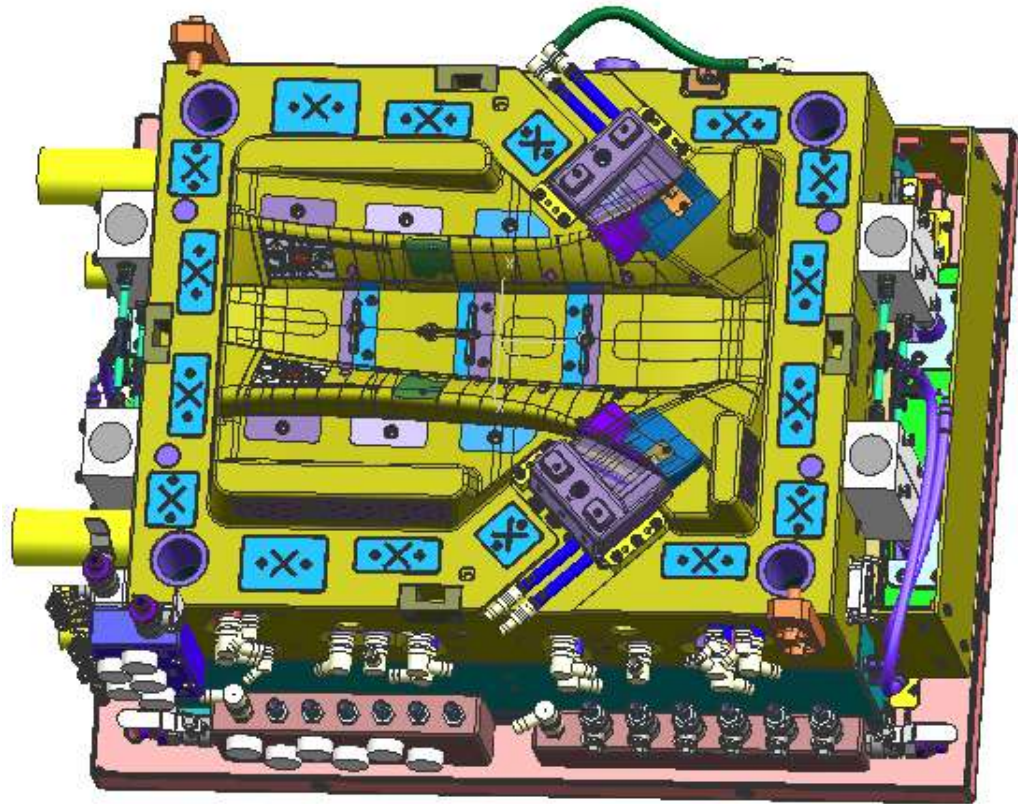


VW TIGUAN SEAT COVER

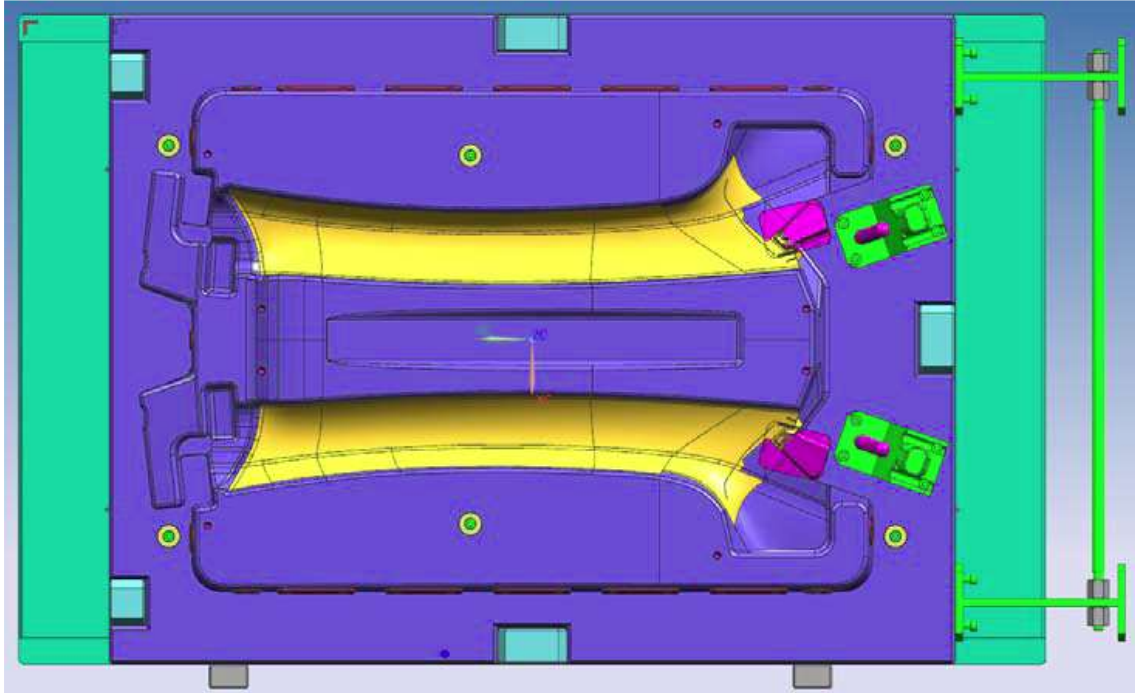


Lucid Frunk Platform

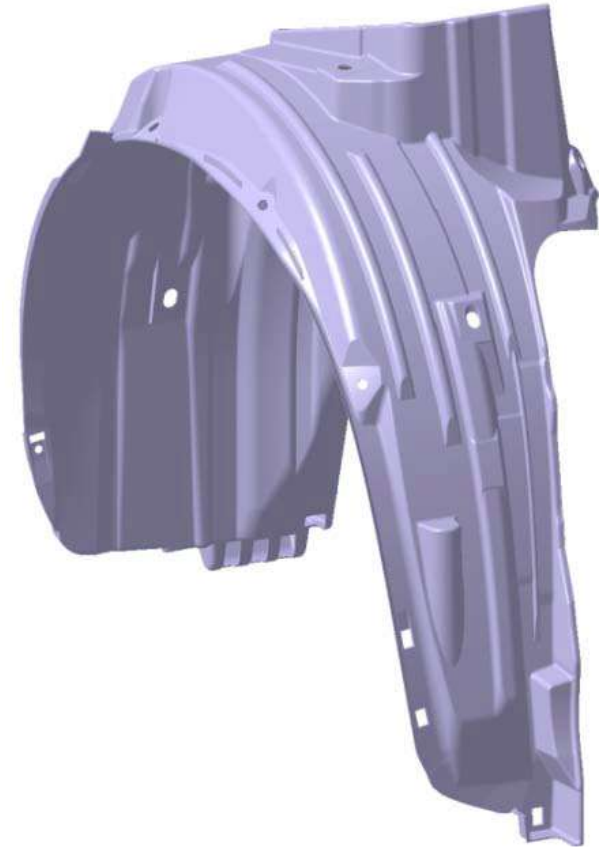
MMI Plastic Injection



MMI Plastic Injection



MMI Plastic Injection



MMI Plastic Injection

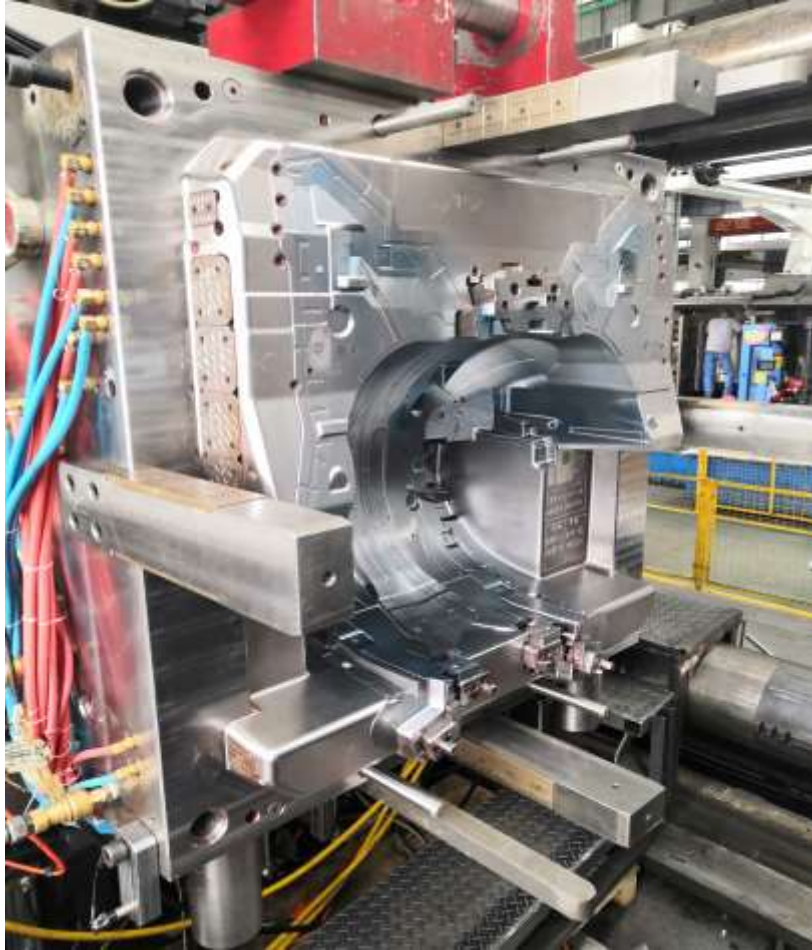




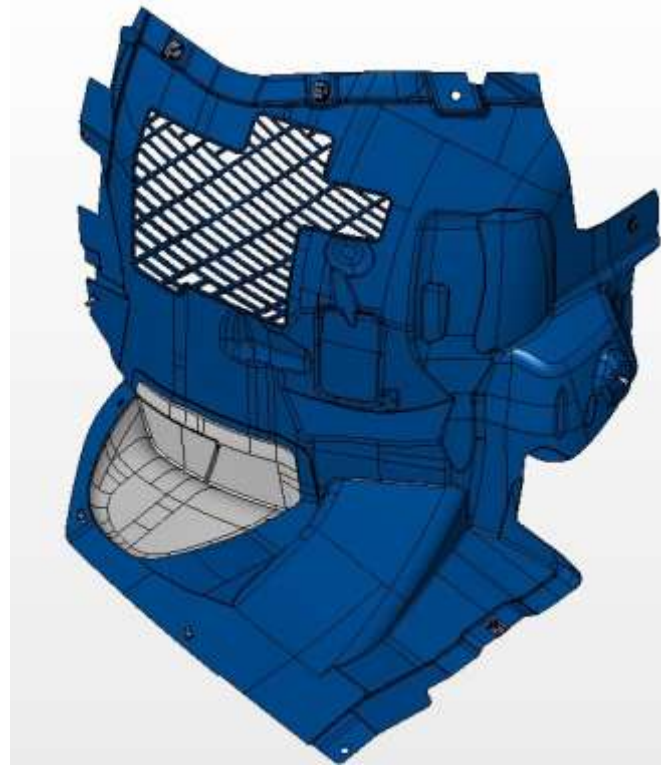
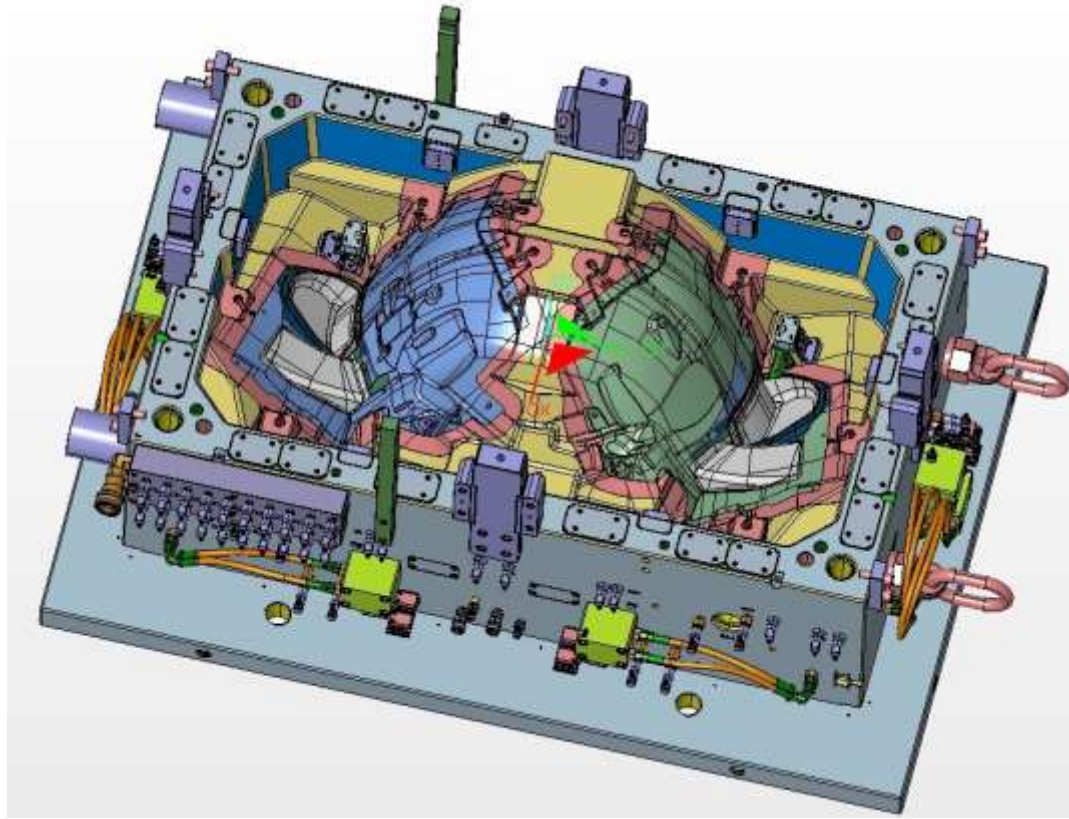
Nissan L21B Fender Protector



2021 Nissan P02F Front Fender Protector



2021 Nissan P02F Front Fender Protector



AUDI 426 2K WHEEL LINER



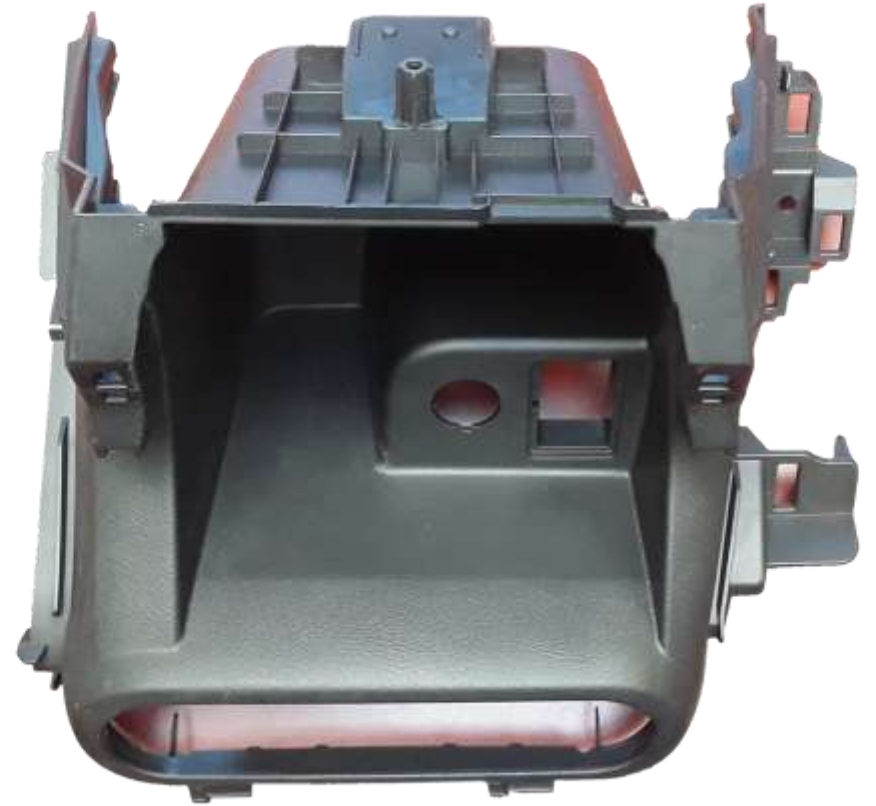
Audi AU426 2K Wheel Liner



Ford P758 Door Carriers



Nissan XM11 Sun visor bracket



Nissan PO2F Center Cover

With offices in Windsor and Mexico City, personnel in Canada, Mexico and China,
MMI offers a flexible cost effective manufacturing process with a systematic
approach for your tooling requirements



THANK YOU !



Mold Makers International Inc.

Kaihua



SPEED AND PASSION

ANNEX 1 - EQUIPMENT



Antonio S.D.



MMI – Kaihua Mold Manufacturing plants



Antonio S.D.



MMI – Kaihua – Injection Trials





Antonio S.D.



MMI – Kaihua plant equipment



Name	Type	Qty	Manufacturer	Specification
CNC Center	HTM-630GA/ HTM-1000G	8	Haitian	1200*630*50 1500*1000*600
	HTM-1500G/ HTM-3225G	3		2000*1500*650 3200*2500*1000
	HTM-3216G/ HTM-2028G	3		3200*1600*1000 3200*2800*1000
5-axis high-speed CNC	D318	2	Italy FIDIA	3000*1000*800
	GTF2214/3500	2	Italy FIDIA	3500*2200*1400
	MCR-B III 25E	1	Japan OKUMA	4000*2500*1200
5-axis CNC	DMU65	1	Germany DMG	3000*2000*1600
High-speed CNC	F5	1	Japan MAKINO	900*500*450
	AV-1612/ AV-1280	1 1	Taiwan QUICK JET	1600*1200*650 1200*800*500
Horizontal CNC Center	AKB-13	1	Japan KURAKI	3000*2000*1600
Graphite high- speed CNC	E33	2	Japan MAKINO	600*400*350
	GD7 GD5	1 1	Taiwan TAKUMI	750*600*400 600*550*300



MMI – Kaihua plant equipment



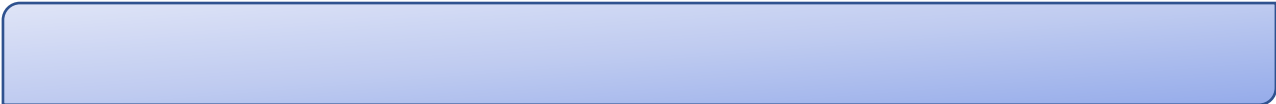
Name	Type	Qty	Manufacturer	Specification
Double head EDM	TURBO 3500CNC	2	DAEHAN EDM	3000*2000*1500
SPARK MACHINE	CUTDM EDM	8	CUTDM CHINA	2500*1000*1000 1250*800*450 1000*600*400 800*500*300 700*400*300
SPARK MACHINE	EDGE3	1	MAKINO JAPAN	600*400*400
WIRE CUTTING MACHINE	CTWG302TB CTWG400TB CTWG500TB CTWG630TC CTWG1000TC	5	CUTDM CHINA	630*440*300 850*500*500 950*600*500 1070*700*1000 1460*960*1000
Slow-feeding wire cut	DUO64	1	JAPAN MAKINO	650*400*420



MMI – Kaihua plant equipment



Name	Type	Qty	Manufacturer	Specification
5-axis gun drill	DHD3015-15RT	1	HK MINGLEE	3000*2000*1500
Gun drill	DHD2515-15S	1	HK MINGLEE	2500*1500*1500



MMI – Kaihua plant injection equipment



Name	Type	Qty	Manufacturer	Specification
Injection Machine	MA3300T/ 15800U	1	Hai Tian	3300T
Injection Machine	MA1600T/ 13700U	1	Hai Tian	1600T
Injection Machine	MA1000T/ 8400U	1	Hai Tian	1000T
Injection Machine	MA600T/ 4000U	1	Hai Tian	600T
Injection Machine	MA470T/ 2250U	1	Hai Tian	470T
Injection Machine	MA250T/	1	Hai Tian	250T



MMI – Kaihua plant inspection equipment



Name	Type	Qty	Manufacturer	Specification
CMM Machine	Alpha Image 25.33.15	1	American Hexagon	2500*3300*1500
CMM Machine	Xorbit87	1	Germany WENZEL	1000*800*700
Balance Machine	TCMDZ92	1	Germany SCHENCK	200-800
Image Measurement	v09060283	1	Taiwan Wanhao	300*150*100
Roughness Measurement	SRM-1	1	China LIANSHENG	
Mirco-hardness	HXS-1000AY	1	Taiwan HAOWEI	
Portable hardness	HT-1000A	1	Taiwan QIANDA	5-1000 HV
Rock Hardness	200HR-150	1	China HUAYING	
Oil/Water pressure testing machine		1	China WUXING	0-20MPa

