



“LESS IS MORE”

“Solutions with innovation”



Huamantla, Tlaxcala

Calle 15 de Agosto Lote 11-A Ciudad Industrial Xicohtencatl II 90500
Huamantla, Tlaxcala Mexico

About Us

We are a company that offer products with premium quality for the automotive & railway industry in all the different brands and market sectors each has

As a Group with plants in Europe, North Africa and North America, we conjugate Italian creativity with local specific competences, adding value to the customer process and products by the mutual collaboration since the idea conception

Our goal is to be the preferred supplier everytime you think on interior components as seats, armrests, headrests and upholstered parts

Mision

Design, produce & commercialize premium class seats systems, components and services to meet the demand and full requirements of the automotive & railway industry

Vision

Hold and reinforce in the long term the position we have acquired on international markets as supplier of premium class products, offering value added to our customers.

Be the most competitive in the global market while we balance our resources that generates the needed benefit guaranteeing the growth of our people and company.

Clerprem Group



7 Plants

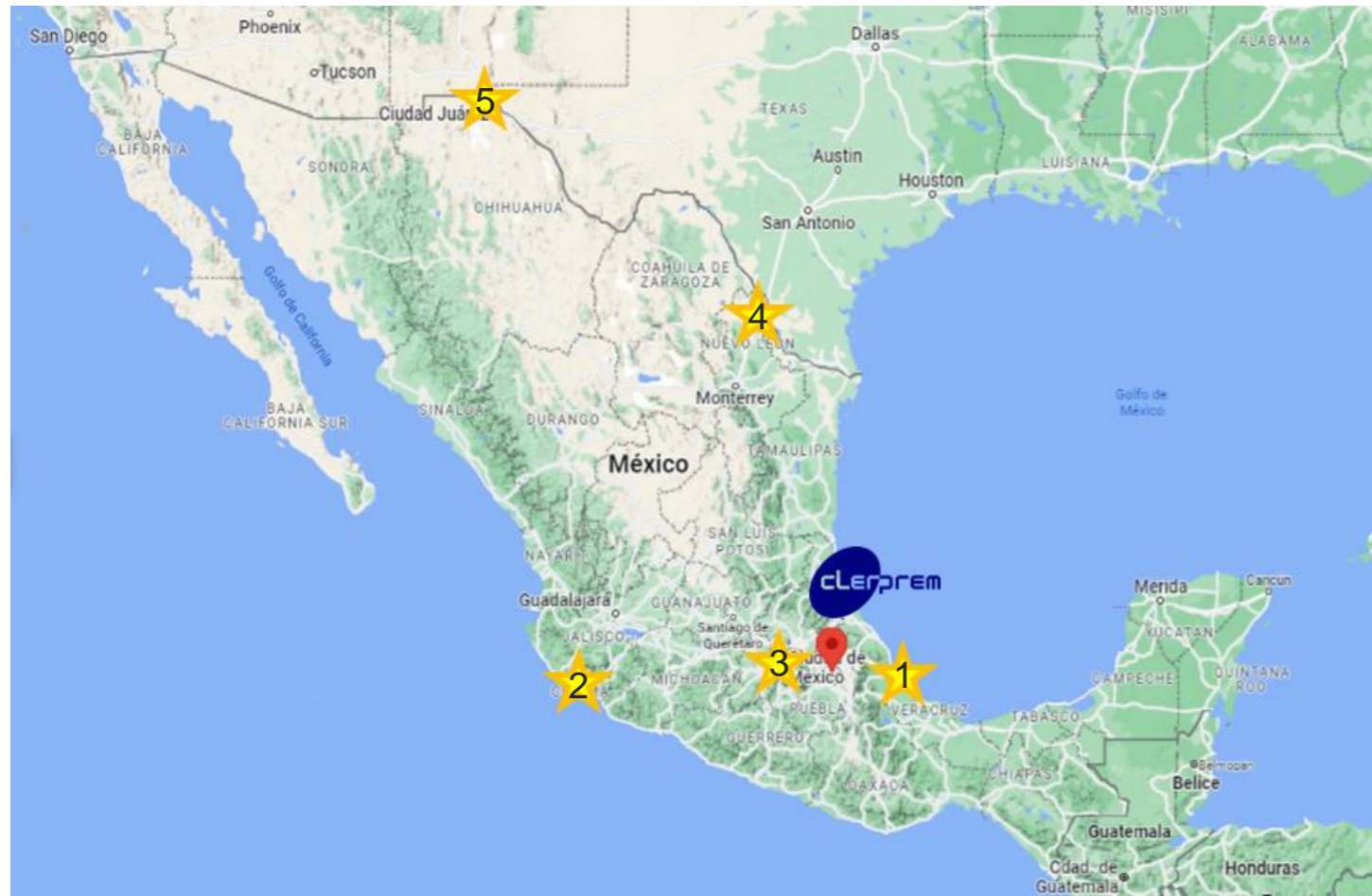


1 800 employees

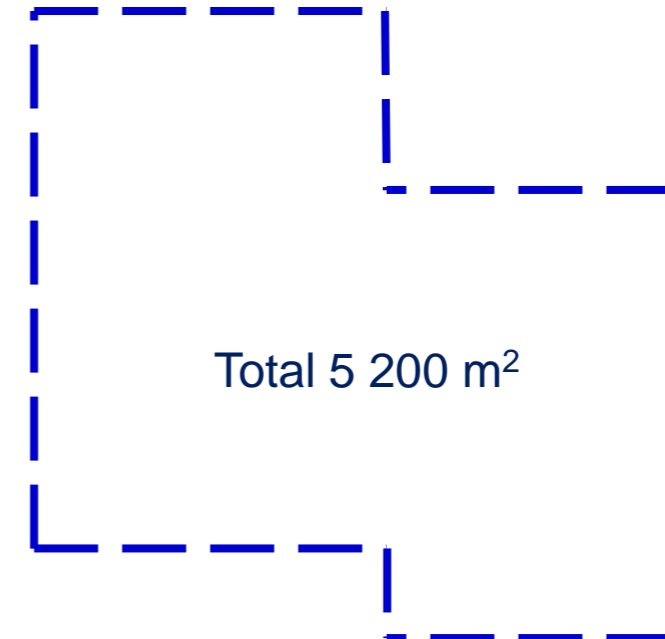


2 Business Sectors

Clerprem Mexico - Facility

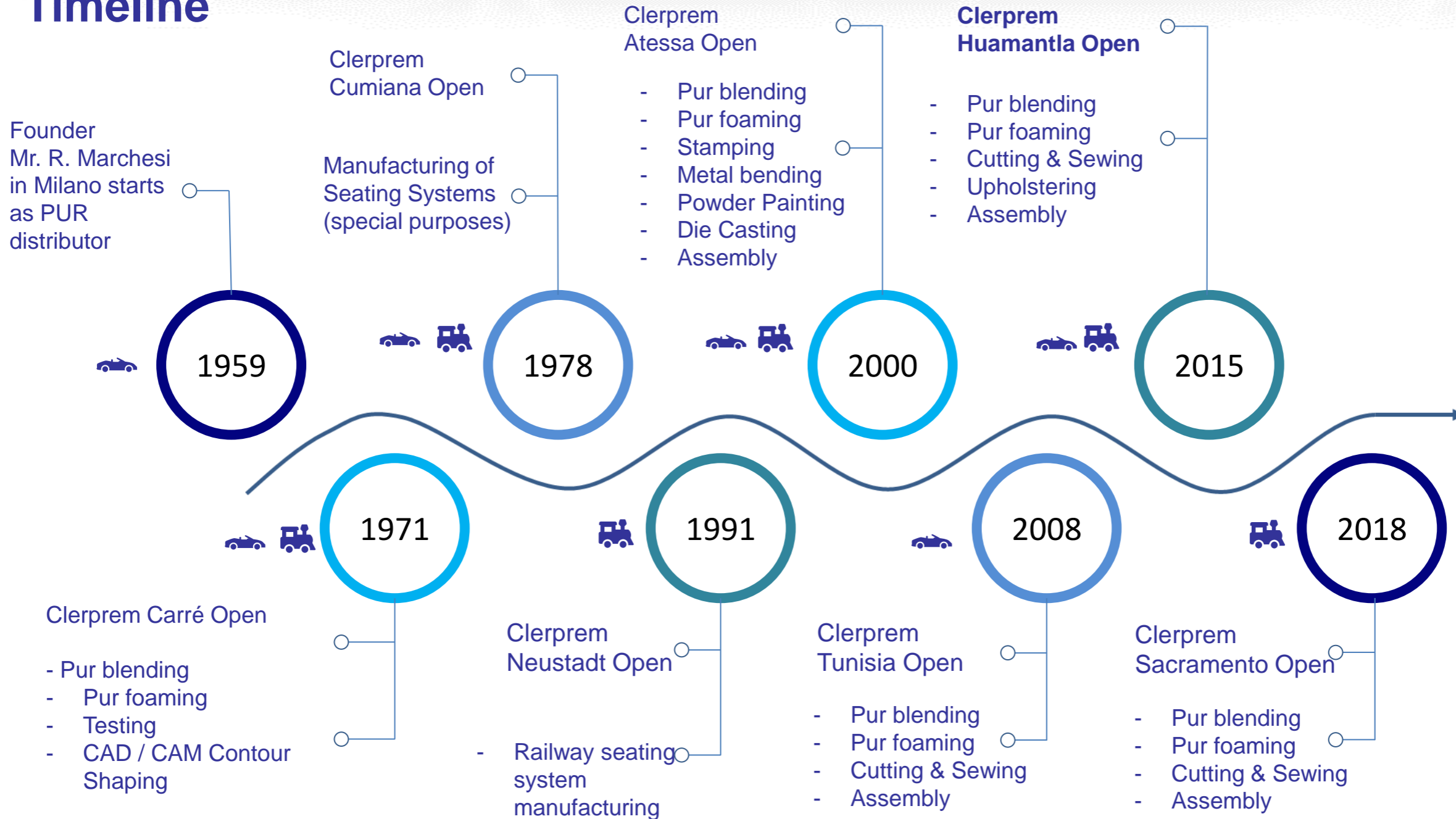


- 1 - 250 km to Veracruz Port
- 2 - 950 Km to Manzanillo Port
- 3 - 150 Km to Mexico City International Airport
- 4 - 1 150 Km to Nuevo Laredo
- 5 - 2 075 Km to CD Juarez -El Paso



Click on the picture to open location on your browser

Timeline



Customers



Automotive



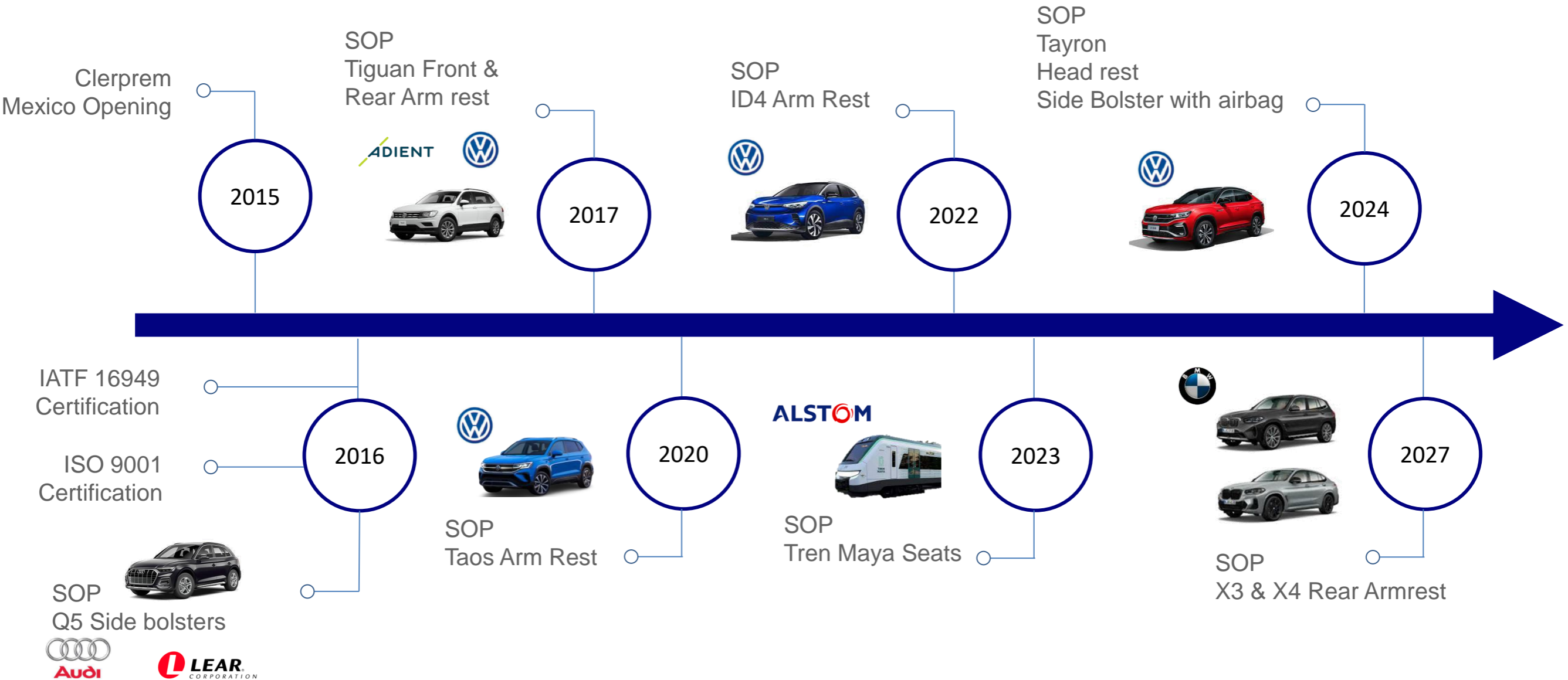
Railway



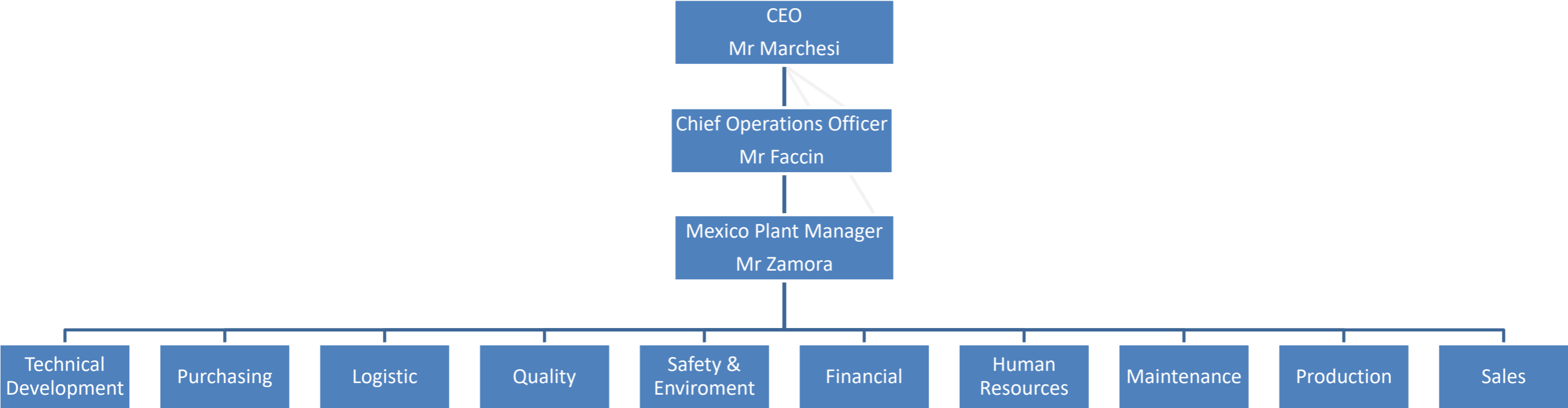
ALSTOM



Clerprem Mexico - Timeline



Clerprem Mexico – Organizational Chart



180 Operational Labor



36 Adminsitratve Labor

Products



- Crafter
- Tiguan
- T-Roc
- Golf
- Taos
- ID.4
- Tayron



Crafter



Tiguan Front and Rear



T - Roc



Golf



Taos



ID.4

Front
Armrest

PREVIEW
2022

Front
Headrest

PREVIEW
2024

Tayron



- A6 – A7
- A8
- E-Tron



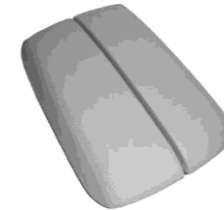
A6 –A7 Front and Rear



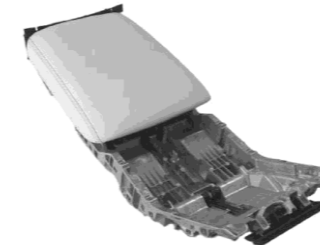
E-Tron Front and Rear



- Q2
- Q3
- Q5
- eQ5
- eQ6
- e6



A8 Front and Rear



Front
Armrest

PREVIEW
2024

Q3 Front



Q2



Q5

Rear side
Bolsters

PREVIEW
2023

eQ5

Rear side
Bolsters

PREVIEW
2023

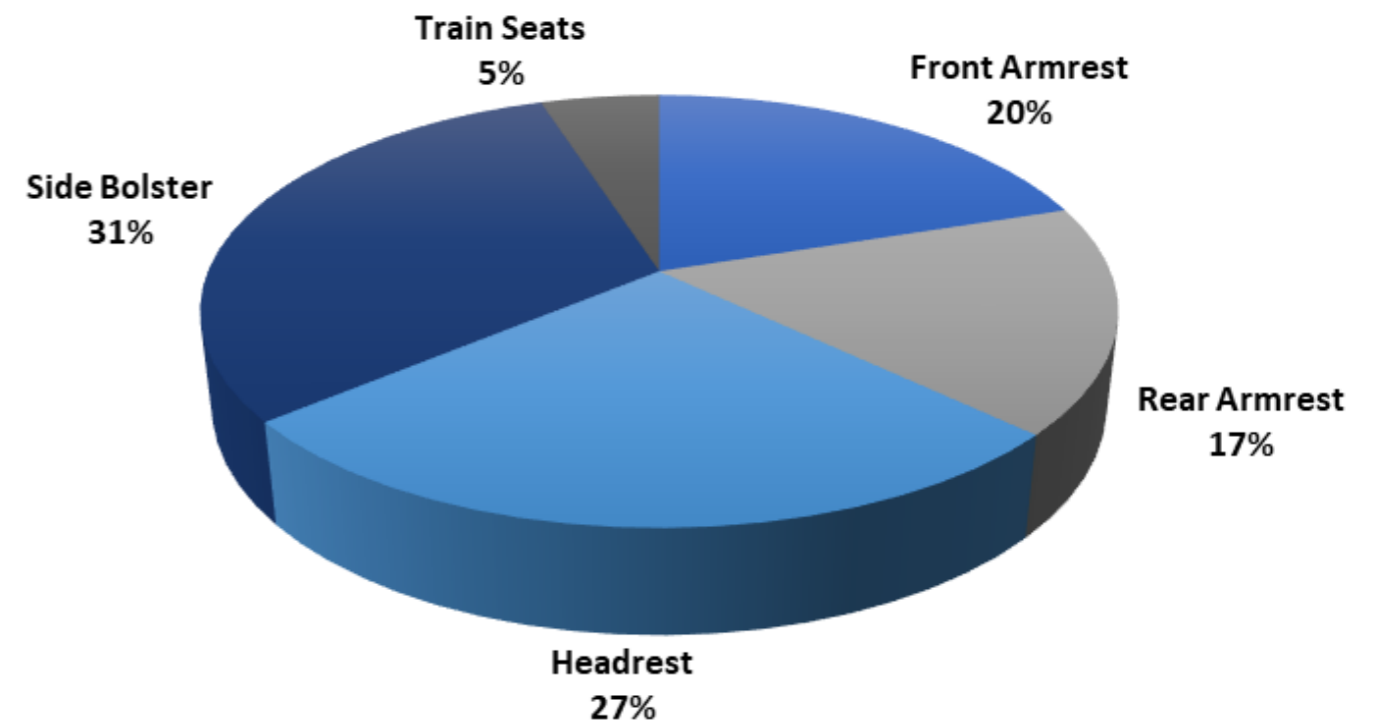
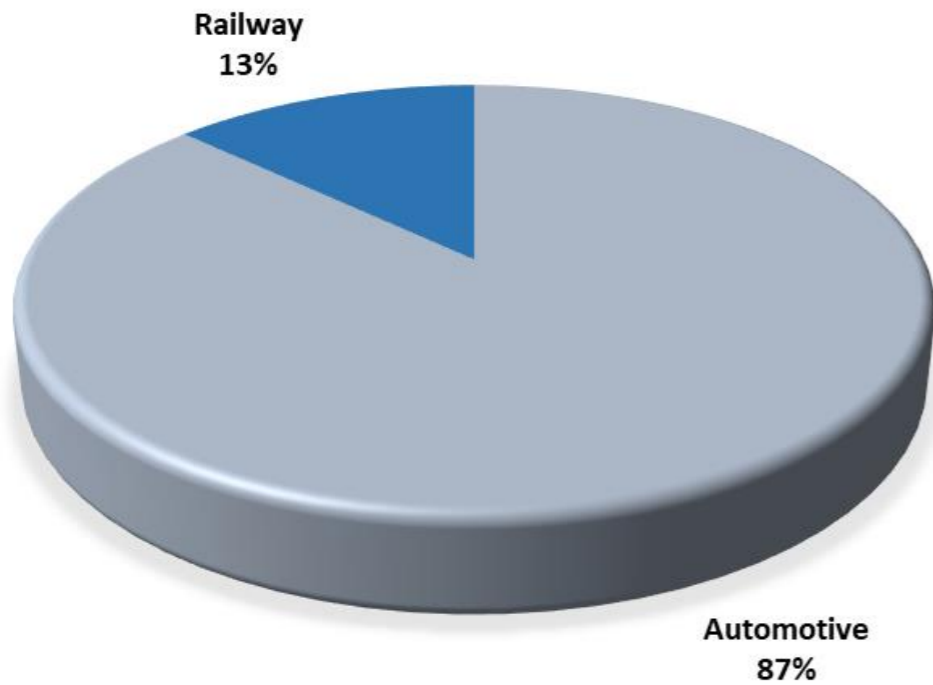
eQ6

Rear side
Bolsters

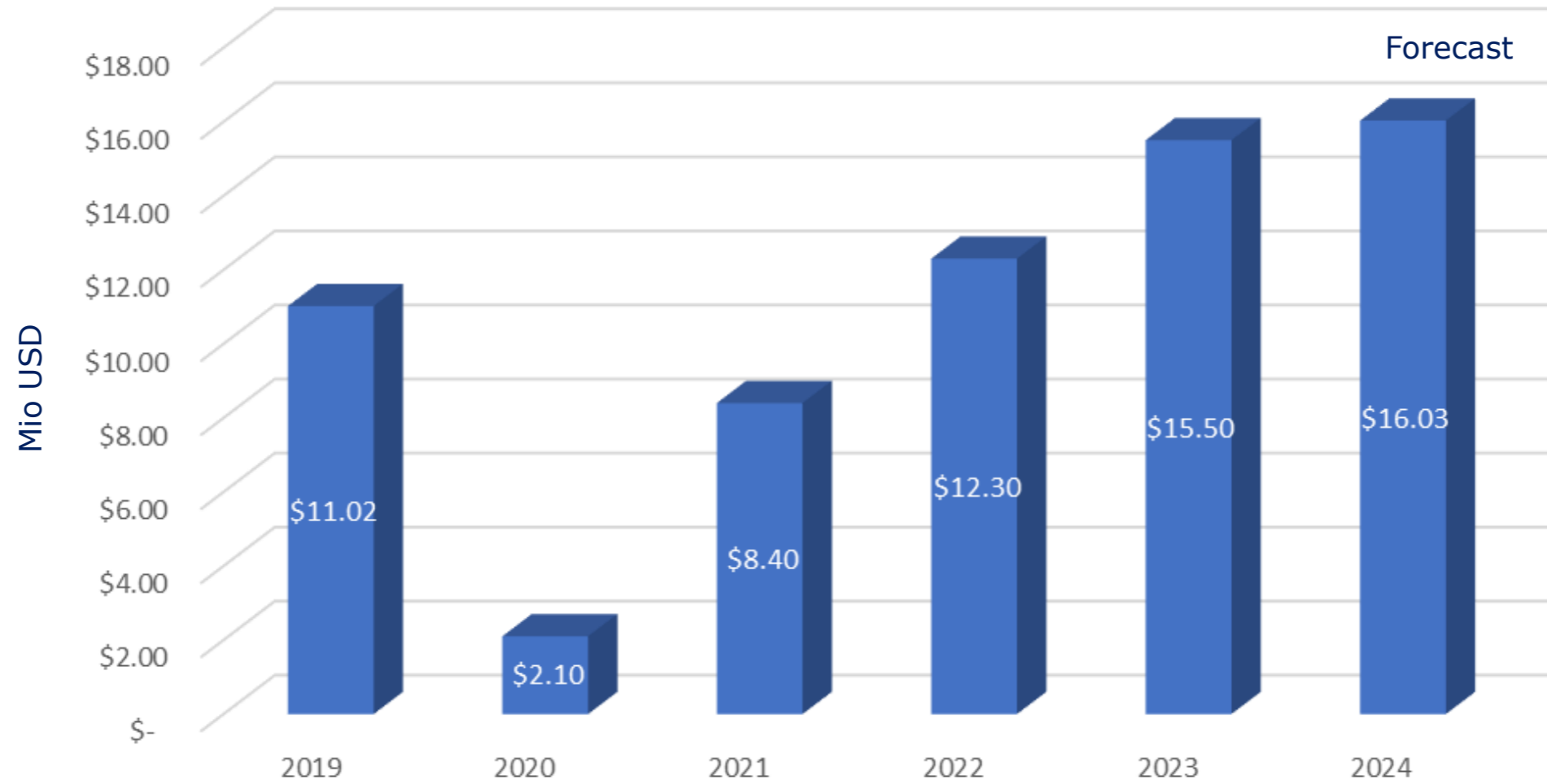
PREVIEW
2024

e6

Operating Markets & % of Product Selling



Invoicing





Seats & Seating systems

Train Seats



ALSTOM



Side bolsters with Airbag



Front Armrest



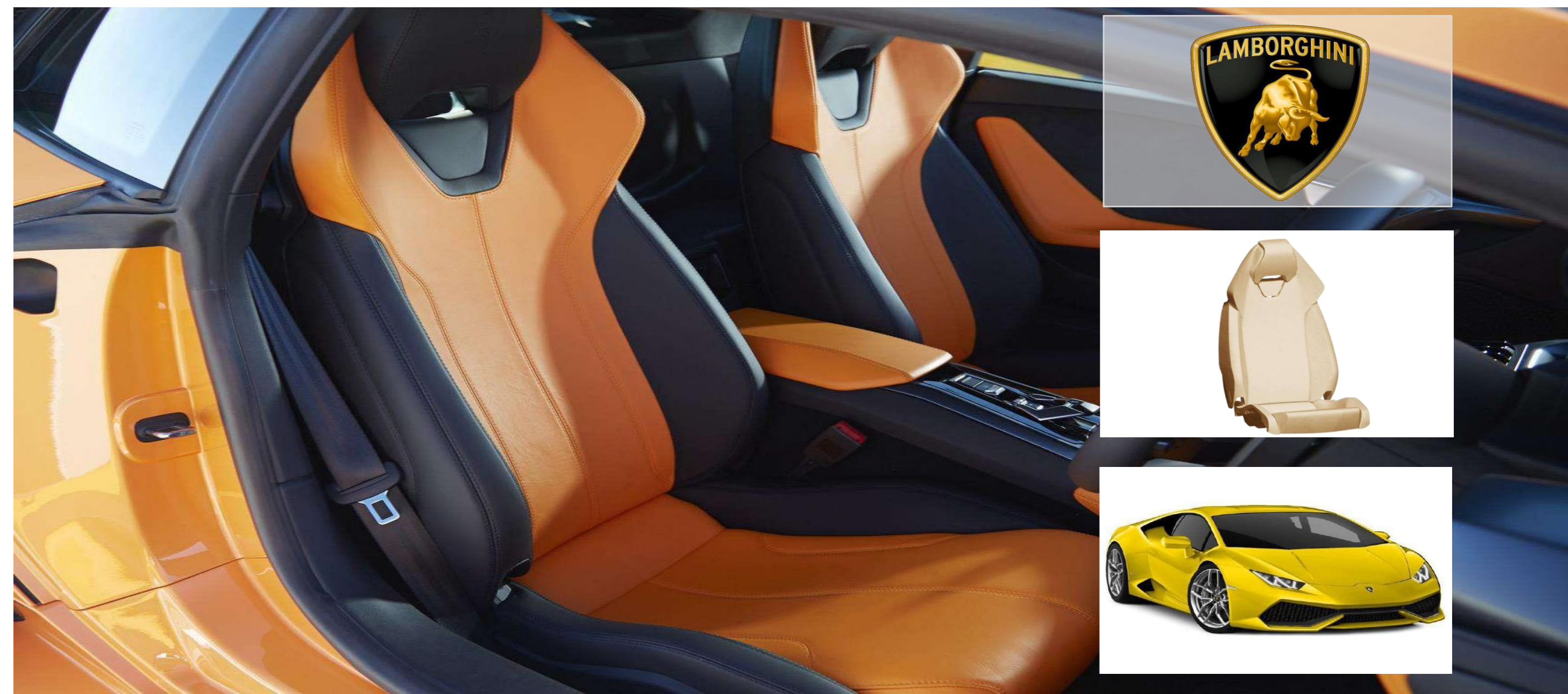
FRONT ARMRESTS - i3



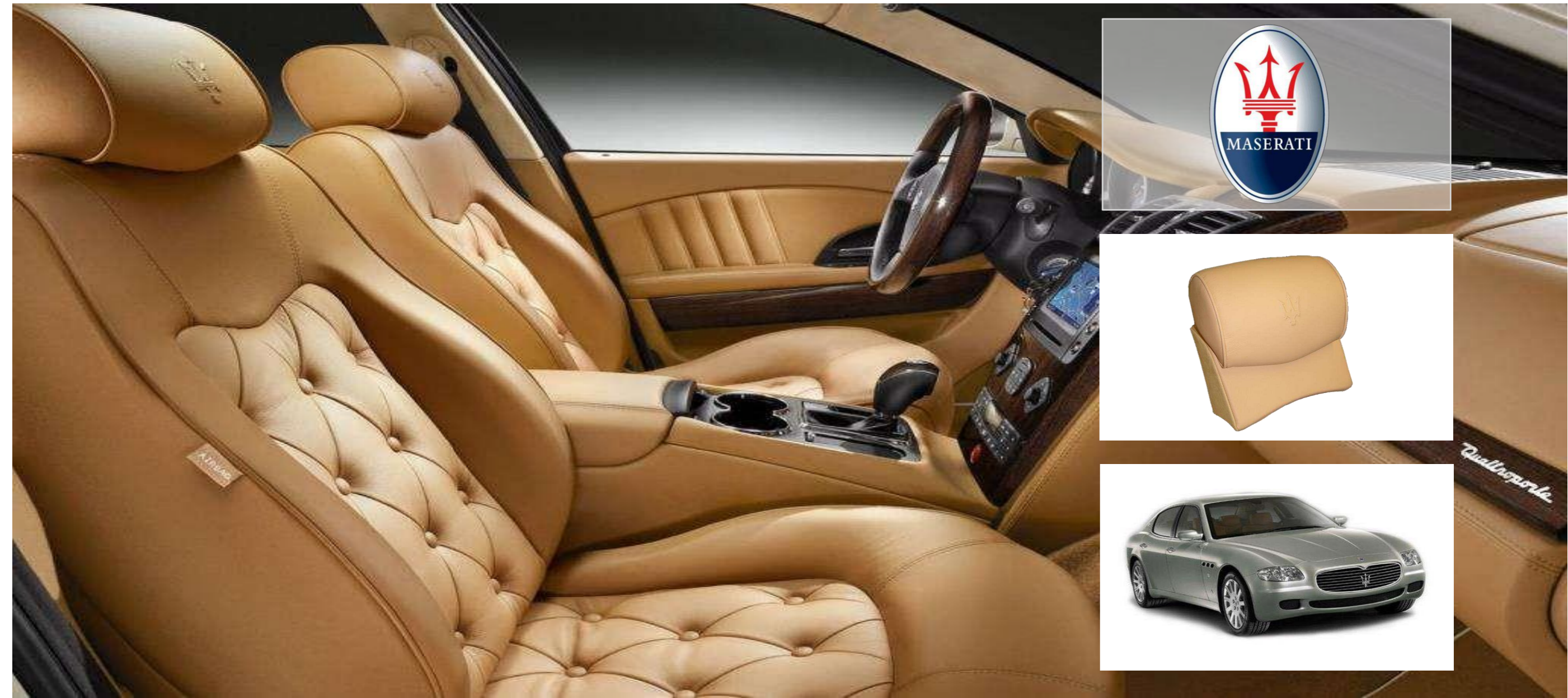
1



PUR Seat Foam



Headrests

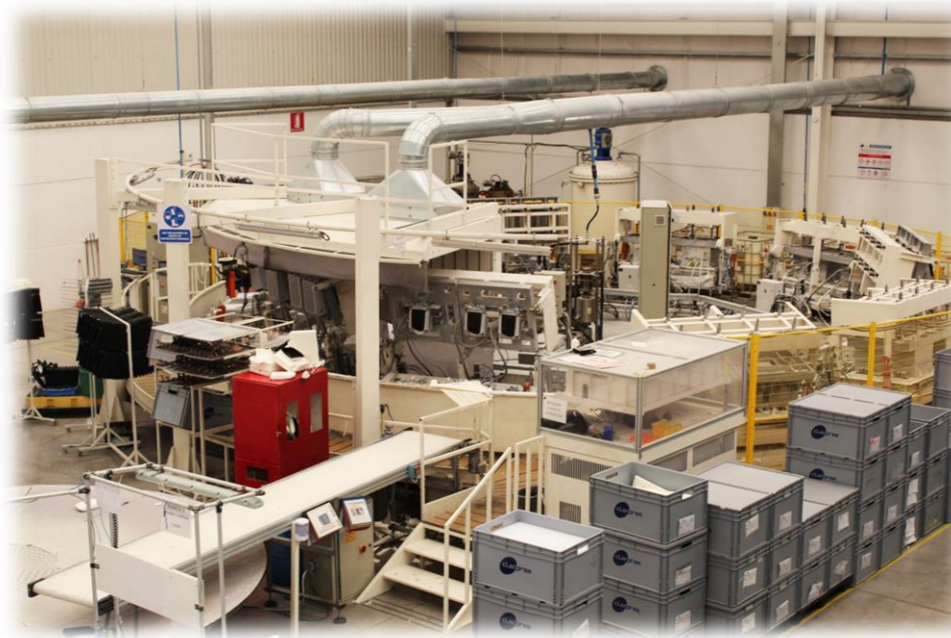


Clerprem Mexico - Processes

Foaming

1 Robot for automatic PUR foam application

1 Rotating machine with 10 presses



Clerprem Mexico - Processes

Cutting & Sewing

2 Automatic cutting machines for leather, fabric & PVC materials

24 Sewing machines



Clerprem Mexico - Processes



Upholstering & Assembly

1 Assembly & Upholstering Line for Train Seats
4 Upholstering Lines

3 Assembly Lines to add:

- Screws
- Springs
- Rivets
- Bushings
- Metallic Frames
- Cup Holders

Clerprem Mexico - Laboratory

Measurement Equipment

- Faro arm
For dimensional
- Identometer
For foaming Hardness



Test Equipment

- Torque Machine
For open & closing force test on arm rest
- Gloss meter
For gloss test
- Spectrophotometer
For color test



Clerprem Headquarter - Laboratory

Test Equipment

- Salt Spray Chamber
- Burning Test
- Climate Chamber
- Aging Chamber
- Universal Machine
- Friction Fabric Test
- Open & close force measure machine (able to run 10 000 cycles)
- Robot to simulate seating cycles on seats or foams (able to run 10 000 cycles)



Clerprem Headquarter Prototype Room

Equipment

- Design Station
- 4 FDM Printer
- 4 SLA Printer



Why Clerprem Mexico?

"We create added value for our customer manufacturing premium quality products"



CREATIVITY

Brainstorming and soft skills are keys in our creative process for shaping customers' ideas by 3D modeling and co-designing



SIMULATION

In the design phase we carry out FMEA analysis, simulate static, dynamic and crash behaviors preventing product failures



OPERATIONS

Lean manufacturing, Kaizen and 5S are applied throughout our production process for combining productivity with quality



PROCESS CONTROL

We monitor compliance of measured values with set processes and product parameters by SPC, instrument calibration and MSA



QUALITY ASSURANCE

We carry out internal audits and KPI measurements for granting the efficiency and certification of our quality system



CUSTOMER ASSISTANCE

Our Customer Service and our Engineer Team provide assistance in every project phase for meeting clients' expectations

Clerprem Mexico - Certifications

IATF 16949 (2016)

ZERTIFIKAT
CERTIFICATE
CERTIFICADO
CERTIFIKAT
認證證書

CERTIFICATE

The Certification Body of TÜV SÜD Management Service GmbH certifies that

CLERPTEM MEXICO S.A.P.I. DE C.V.
Calle 15 De Agosto CD Industrial Xicontencatl II
90500 HUAMANTLA TLAX
Mexico

has established and applies a Quality Management System for

Design and manufacture of armrests, components and moulded parts of flexible polyurethane foam
(with Product Design as per Chapter 8.3).

An audit was performed and has furnished proof that the requirements according to

IATF 16949
First Edition 2016-10-01

are fulfilled.

Issue date: 2021-08-11
Expiry date: 2024-08-10

Certificate Registration No.: 12 111 8750/07 TMS
IATF Certificate No.: 0416642

Part of the certificate is an appendix.

Head of Certification Body
Munich, 2021-08-12

Page 1 of 2

TUV SUD Management Service GmbH

ISO 9001 (2016)

ZERTIFIKAT
CERTIFICATE
CERTIFICADO
CERTIFIKAT
認證證書

CERTIFICATO

Nr. 50 100 13588 Rev.002

SI ATTESTA CHE / THIS IS TO CERTIFY THAT

IL SISTEMA DI GESTIONE PER LA QUALITÀ DI
THE QUALITY MANAGEMENT SYSTEM OF

CLERPTEM MEXICO S.A.P.I. DE C.V.

SEDE LEGALE E OPERATIVA:
REGISTERED OFFICE AND OPERATIONAL SITE:

CALLE 15 DE AGOSTO
CD INDUSTRIAL XICOHTENCATL II
MX - 90500 HUAMANTLA TLAX

È CONFORME AI REQUISITI DELLA NORMA
HAS BEEN FOUND TO COMPLY WITH THE REQUIREMENTS OF

UNI EN ISO 9001:2015

QUESTO CERTIFICATO È VALIDO PER IL SEGUENTE CAMPO DI APPLICAZIONE
THIS CERTIFICATE IS VALID FOR THE FOLLOWING SCOPE OF APPLICATION

Progettazione e fabbricazione di appoggiatesta, componenti e imbottiture in poliuretano flessibile per interni autovetture
(IAF 14)

Design and manufacture of armrests, components and moulded parts of flexible polyurethane foam for car interiors
(IAF 14)

ACCREDIA
SGO N° 049A

Per l'Organismo di Certificazione
For the Certification Body
TÜV Italia S.r.l.

Validità / Validity
Dal / From: 2021-08-11
Al / To: 2024-08-10

Francesco Scarlata
Direttore Divisione Business Assurance
Business Assurance Division Manager

Data emissione / Issuing Date
2021-08-11

PRIMA CERTIFICAZIONE / FIRST CERTIFICATION: 2016-08-30

LA VALIDITÀ DEL PRESENTE CERTIFICATO È SUBORDINATA A SOVRASILIANZA PERIODICA A 12 MESI E AL RISERVA COMPLETO DEL SISTEMA DI GESTIONE AZIENDALE CON PERIODICITÀ TRIENNALE
"THE VALIDITY OF THE PRESENT CERTIFICATE DEPENDS ON THE ANNUAL SURVEILLANCE EVERY 12 MONTHS AND ON THE COMPLETE REVIEW OF COMPANY'S MANAGEMENT SYSTEM AFTER THREE YEARS"

TUV Italia • Gruppo TÜV SÜD • Via Carducci 125, Pal. Z3 • 20099 Sesto San Giovanni (MI) • Italia • www.tuvsud.com/it

Industria Limpia (2023)

GOBIERNO DE MÉXICO
MEDIO AMBIENTE

LA PROCURADURÍA FEDERAL DE PROTECCIÓN AL AMBIENTE OTORGA EL PRESENTE

CERTIFICADO DE

A: CLERPTEM MÉXICO, S.A.P.I. DE C.V.

Blanca Alfoa Mendoza Vera
Procuradora Federal de Protección al Ambiente

PROFEP
PROCURADURÍA FEDERAL DE PROTECCIÓN AL AMBIENTE

NIVEL DE DESEMPEÑO AMBIENTAL
VICENCIA

Abril-2025

Contact Us



Ricardo Rigoni

📞 +39 347 425 29 89

✉️ rrigoni@clerprem.com



Thomas Hoffman

📞 +49 (0)170 / 901 5079

✉️ thofmann@clerprem.com



Luca Brigante

📞 +39 333 693 84 71

✉️ lbrigante@clerprem.com



Abraham De Matias

📞 +52 1 247 100 31 91

✉️ a.dematias@clerprem.com.mx



Angela Dalla Vecchia

📞 +39 044 586 97 55

✉️ adallavecchia@clerprem.com

Clerprem



🌐 www.clerprem.com



Thank you for the kind Attention

LESS IS MORE