



Accudyn Business Overview

July 2023

Accudyn

A Summary of our Capabilities & Outlook

Industry Leading Injection Molding

Custom Injection Molder that Provides Technical, Innovative Solutions to our Customers

Adding Value by Expanding our Manufacturing Capabilities through the Incorporation of New Technologies

Global Presence with Customers and Suppliers



Accudyn

A Company of Values



WELL-BEING OF OUR
PEOPLE



RELATIONSHIP WITH
OUR CUSTOMERS



SUSTAINABILITY OF
OUR BUSINESS



ENGAGEMENT IN
OUR COMMUNITIES

Accudyn History – Key Milestones



1998

Accudyn
founded in Erie
PA



2007

Established
Accudyn de
Mexico in
Chihuahua,
Mexico



2012

Added Internal
Tooling
Capability with
Acquisition of
Crusade Tool



2013 – 2016

Major Expansion
at Accudyn Erie

Accudyn de
Mexico Moves to
a New Location

Company-Wide
ERP Transition to
IQMS



2017

Engineering
Center
Expansion in Erie



2018 – 2022

Added Capacity
and Assembly
Capability in
Chihuahua

Strategic
Planning

Organizational
Structure / Key
Personnel
Additions

Managing the
Impact of COVID

Accudyn Mold &
Engineering

Accudyn Erie

Location – Erie, PA (86,000 sq. ft.)

Employees – 160+

Presses – 46 (20 to 500 tons)

Quality Certifications:

ISO 9001:2015

ISO 13485:2016

UL QMMY2 (E476744)



Accudyn Chihuahua

Location – Chihuahua, MX (56,000 sq. ft.)

Employees – 350+

Presses – 56 (40 to 900 tons)

Certifications

IATF 16949:2016,

ISO 9001:2015,

UL QMMY2 (E476744)



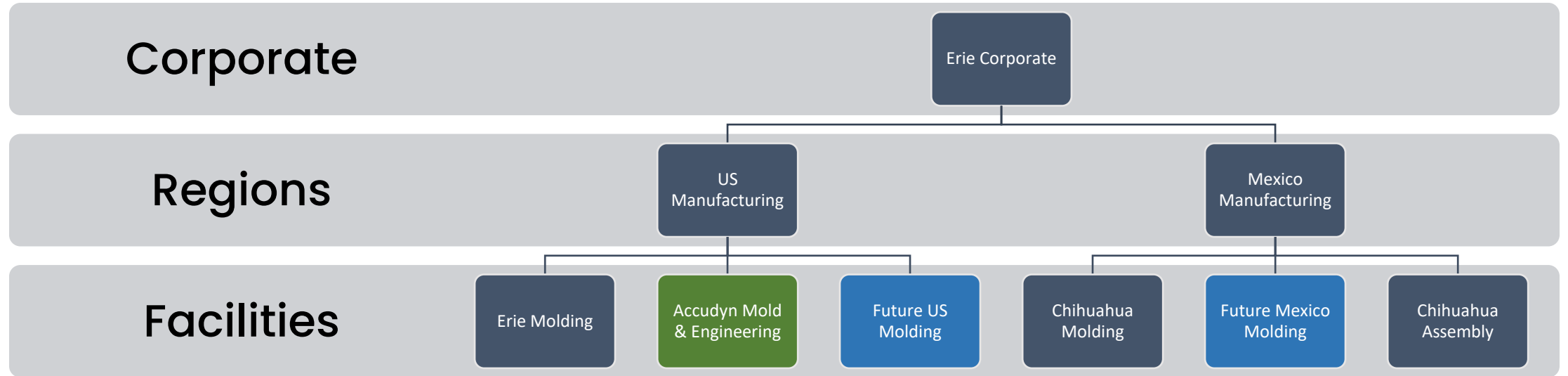
Accudyn Mold & Engineering (AME)

Location – Erie, PA (12,000 sq. ft.)

Employees – 10

AME is a full-service tool shop with world class technology and experienced tool makers that is fully integrated with our engineering and program management teams.





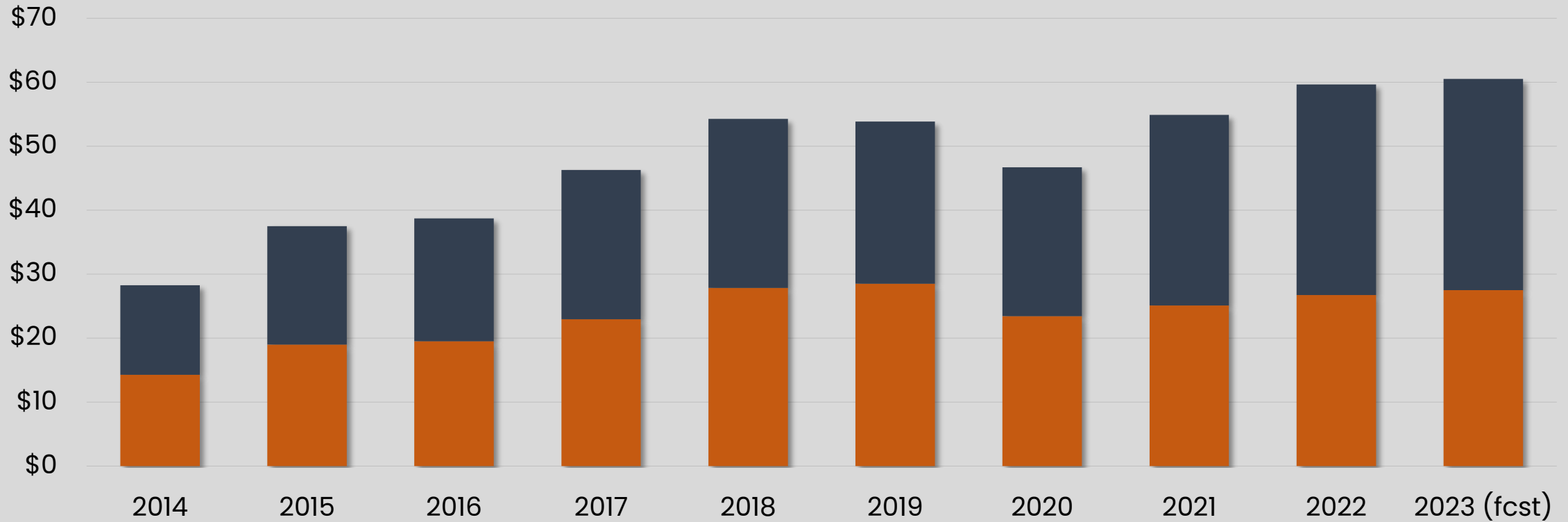
Organizational Structure

Sales Review

A Review of Performance and Growth

Accudyn Sales History

Million USD

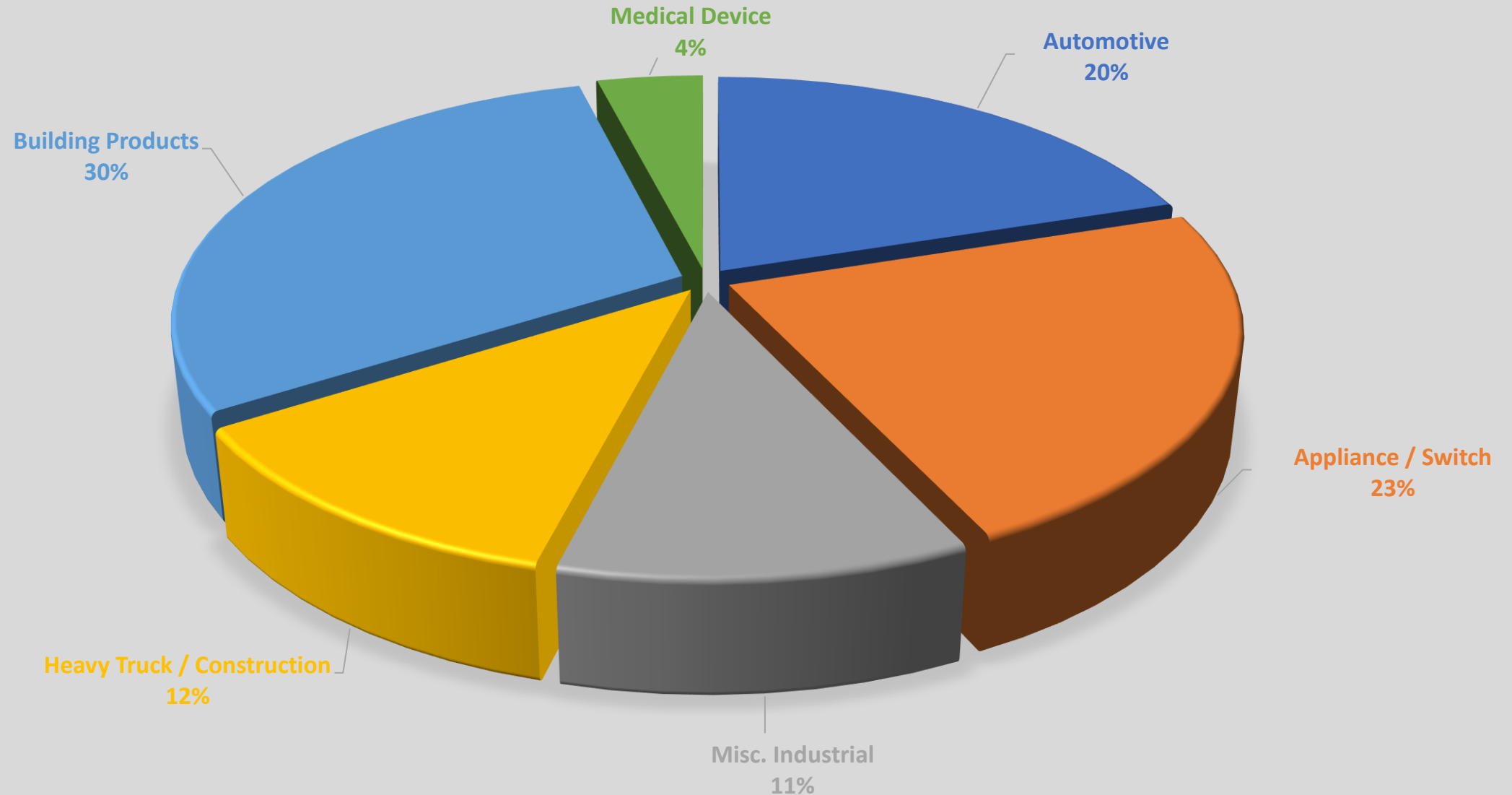


Accudyn Erie



Accudyn Chihuahua

Market Segment Diversification



 **BorgWarner**

 **YAZAKI**

• **A P T I V** •

MAHLE

 **MODINE**

 **TITANX**

LEONI

 **LEAR**
CORPORATION

 **HANON**
SYSTEMS

 **Freudenberg**

Visteon

BOURNS

motherson 

Honeywell

Customer Diversification

COPELAND

 **resideo**

 **SIGMATRON**
INTERNATIONAL

THERMOC  **DISC**

 **Hays**
Cleveland
Div. of UniControl Inc.

 **LUTRON**

 **xylem**
Let's Solve Water

JABIL


Electrical Components
International

 **TECMARK**
CORPORATION

 **Clopay**

 **CONMED**

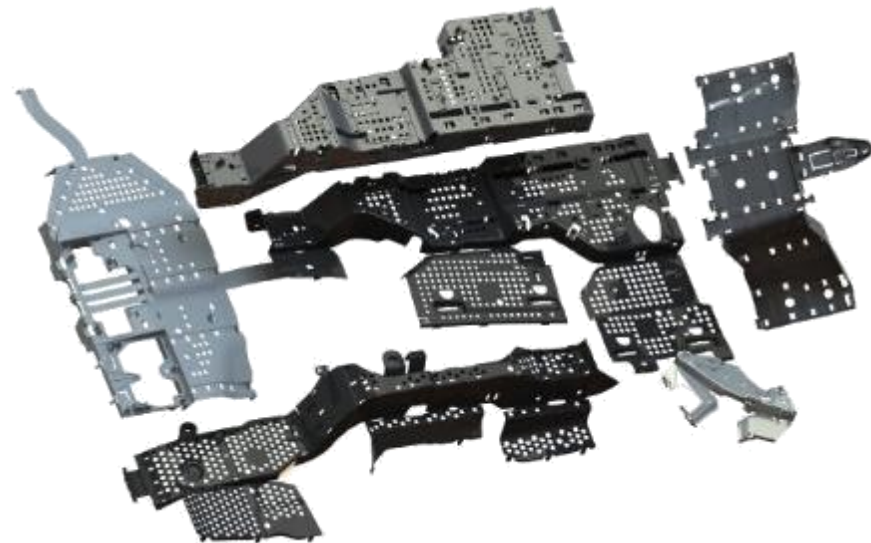
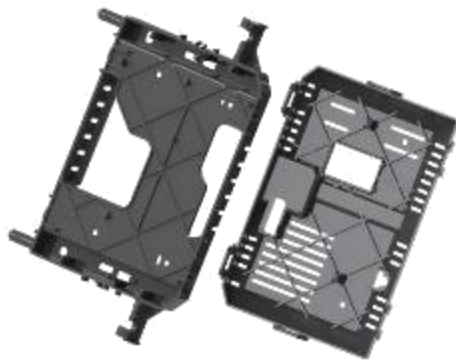
 **signify**

 **MSA**
The Safety Company

 **FLOWSERVE**

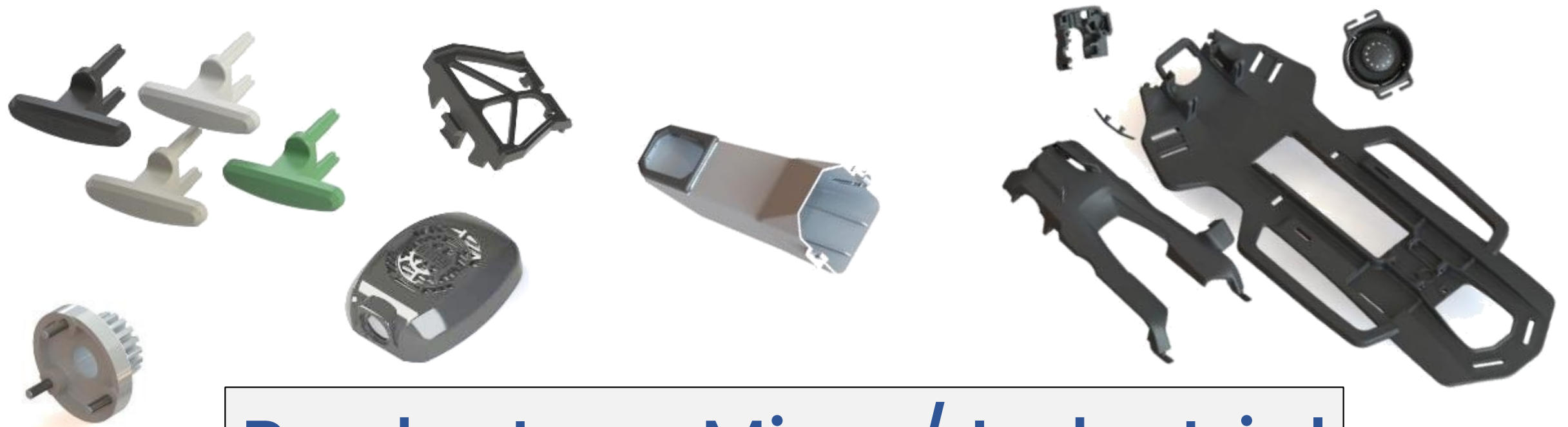
 **CETIKER**
Connecting Technology

 **invisalign**

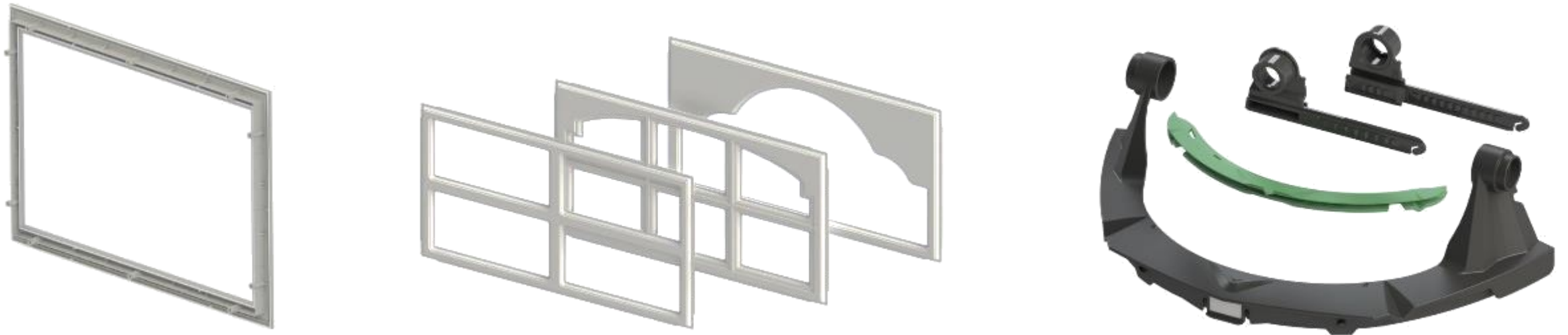


Products - Automotive





Products - Misc. / Industrial

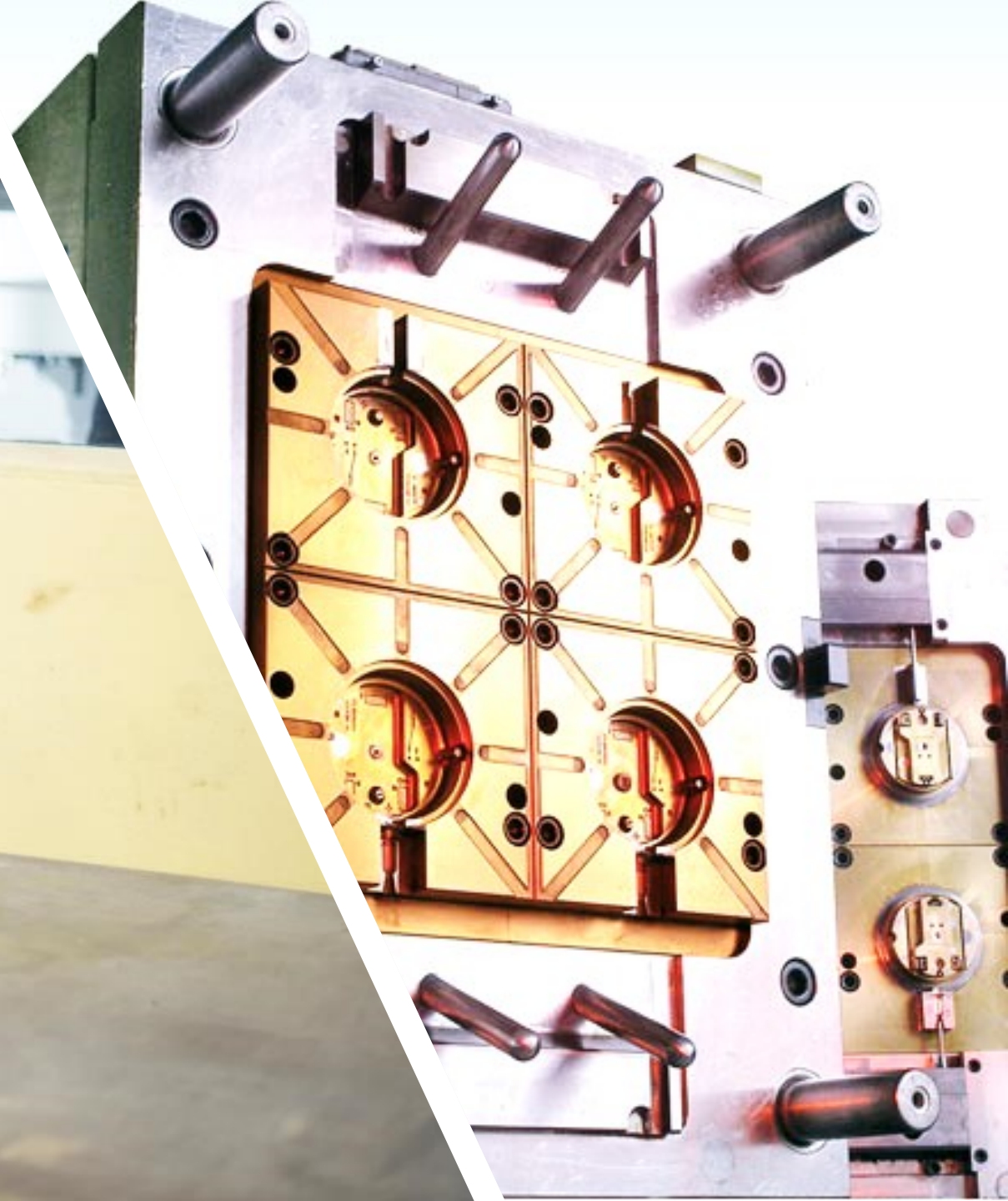


Engineering & Tooling

Overall Technical Capabilities

Sophisticated Tooling Solutions to Meet Virtually any Customer Need

- Established Accudyn Mold & Engineering
- Decades of Tooling Expertise
- Preventative Maintenance (PM) for all Customer Tooling
- Global Tooling Partners
 - United States (Internal/External)
 - Eastern Europe
 - Asia



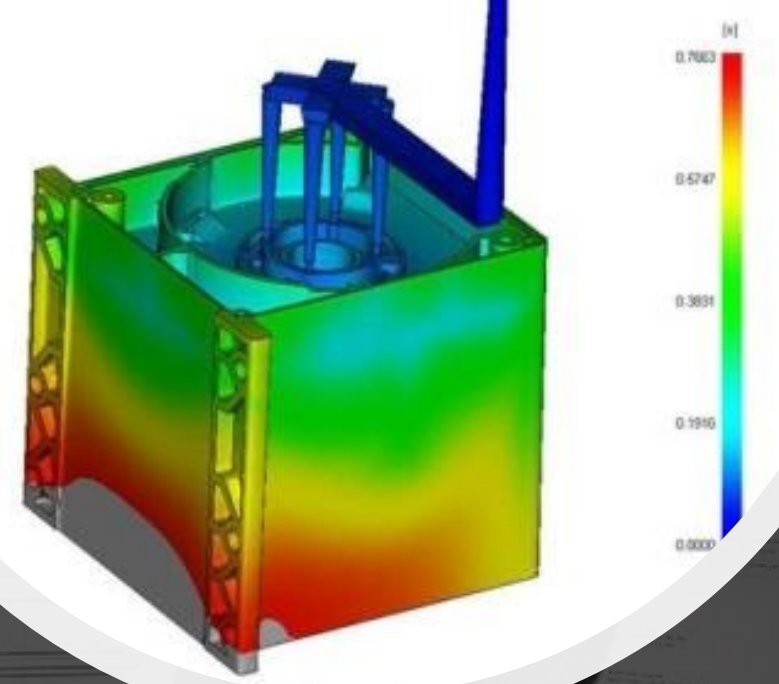
Engineering Discipline is Integral from Design through Production

Product Development Support and Analysis

- SolidWorks Professional for Design
- Moldflow Insight Software for Flow Simulation and Analysis

Metal-to-Plastic Conversion

Program Management



Program Management at Accudyn Employs a Systems-driven Approach that Integrates Online Collaboration, Timelines and AIAG/APQP Adherence

Cross-functional Engineering Support

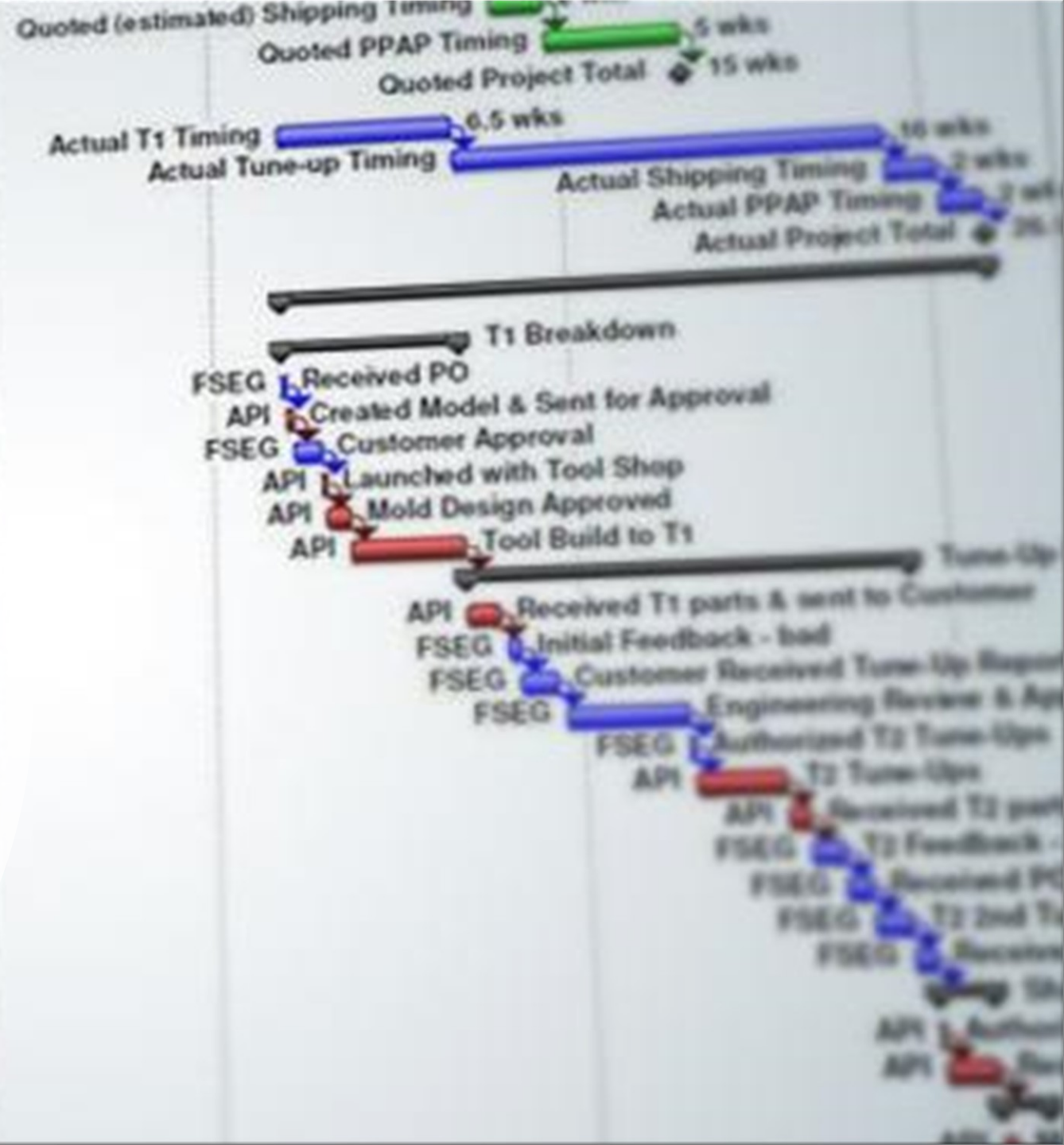
Microsoft Project Online Utilized to Manage
Projects

Weekly Meetings on All Projects

New Tooling Projects Managed Through Erie
Engineering Group

Close Communication with Plant Engineering
Teams

PPAP and Production Readiness



Manufacturing & Quality

System Driven Processes



Both Accudyn Molding Facilities Offer:

- Precision Drying Equipment for Each Machine
- Hardened Screw and Barrels for Abrasive Resins
- Scientific Molding Capabilities
- Process Alarms Integrated into Key Machine Controls
- Automation / Robotics for Insert Molding and Part Removal
- Realtime Monitoring Capabilities through IQMS

Accudyn's System-driven Molding Processes Cover the Exacting Requirements Needed to Mold a Broad Range of Highly Engineered Resins

Value Added Operations

- Ultrasonic Welding
- Pad Printing / Laser Printing
- Heat-staking
- Leak Testing
- Manual & Automated Assembly
- Vision System Part Inspection
- Annealing
- Two-shot Molding
- Insert Molding



Accudyn Quality

Our Certified Quality Systems are Integral to our Focus on Zero-defect Injection Molding and Flawless Delivery Performance



Database Driven Quality System

Fully Equipped Quality Labs

- Bridge-Type Touch CMM – Carl Zeiss Contura G2
- Multi-sensor DDC 4th Axis CMM – Carl Zeiss O-Inspect 543 CNC
- Gear-pro Software – Integrated into Calypso
- OGP SmartScope Flash 1500 – Multisensor Measurement
- Keyence VL500 – 3D Part Scanning (.0004" accuracy)
- Melt Flow, Moisture Analysis, Leak Testing
- Spectrophotometer, Gloss Meter and Roughness Meter
- Full PPAP Capabilities
- IQ / OQ / PQ – Medical validation standards

Accudyn's Value

Why our customers do business with us ...

Accudyn's Value Proposition



Family Owned / Family
Oriented Company



Customer Driven /
Customer Focused



Process Driven
Manufacturing Systems



Right Manufacturing
Footprint



Engineering – Materials /
Analysis / Design Support /
Process Development



We are Competitive



We are Financially
Healthy / We are
Growing



Our Team
Focused – Engaged –
Responsive – Enthusiastic



Tooling – Offshore
Options / Enhanced
Internal Capabilities

Future Outlook

Accudyn 2025

Accudyn 2025



Business Development

Expected Growth Across Multiple Market Segments
Developing a Broader More Diverse Customer Base

Technology Development

Adoption and Use of Industry Leading Technology Across
the Company

Manufacturing Capacity & Capabilities

Operational Performance, Maximizing Capacity on Current
Assets, Implementation of New Capabilities

People

Continued Encouragement of a Workforce that is
Motivated and Understands Their Contribution to
Accudyn's Success



www.accudyn.com