

MAKINOVO

CNC • PRECISION MACHINING

BY  PALOMINO

MAKINOVO

CNC • PRECISION MACHINING

Makinovo offers high precision CNC machined products, tooling and design engineering services to the world's leading industries:

- Aerospace
- Oil and Gas
- Automotive
- Medical
- Electronic

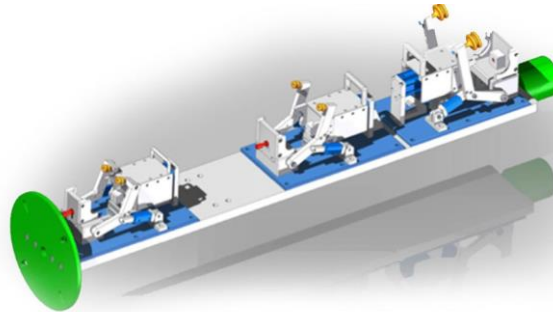


Quality • On-Time Delivery • Excellence

Competitive Advantages

Quality Management System - AS9100D
56 900 18610070 Cert. Registration

Engineering licenced software
Siemens NX – CAD / CAM
ZW CAD



QA Inspection licenced software
Zeiss Calypso - CMM
Geomagic – Reverse engineering

CALYPSO.



CERTIFICATE

TUV USA, Inc.

Accredited under the Aerospace Registration Management Program
and under the ICOP scheme

hereby certifies that



Palomino Makinovo
Luis G. Urbina 11546 Interior 3
Complejo Industrial Chihuahua Norte
Ciudad: Chihuahua, Chih.
C.P. 31136 MEXICO

has established and applies
a quality system for the

High Precision CNC Industrial Machining and Design Engineering
(Certification Structure: Single)

Proof has been furnished that the requirements according to

ISO 9001:2015/AS9100D

are fulfilled.

"The assessment was performed in accordance with AS9104/1:2012-01"

Certificate Registration No.

56 900 18610070

Effective: March 21, 2021

Expires: March 20, 2024

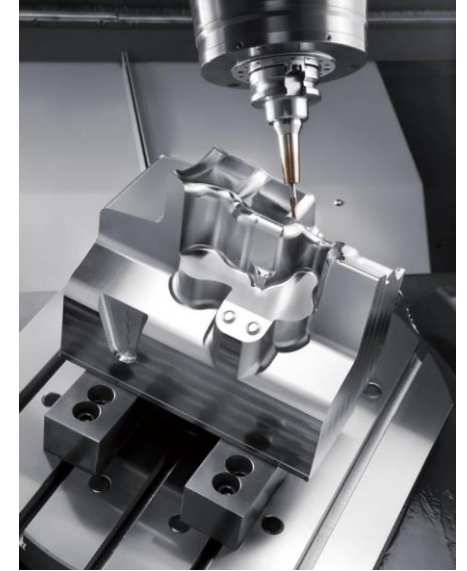
Date of Issue: December 01, 2020

Signature
Quality Systems Division
215 Main Street
Salem, NH 03079 USA



Machined parts applications

- Aircraft Interiors – aluminum brackets:
 - Overhead bins
 - Seat assemblies
 - Galleys / Partitions
- Electrical - Stainless steel connectors
- Aluminum aerostructures
- Fluid meters - Stainless steel components
- Spare parts and aftermarket replacements
- Tooling / Holding fixtures / jigs



Business Partners



Strategic Business Partners - Chihuahua



CNC Machines and Equipment

CNC Milling – 9 machines

- Okuma - 5 Axis
- Makino - High Speed
- Doosan - 3 + 1 Axis Vertical
- Doosan - 3 Axis Vertical

CNC Lathe + Milling – 4 machines

- Okuma / Doosan

CNC Lathe – 5 machines

- Okuma / Doosan

Swiss Type Lathe + bar feeder – 2 machines

- Hanwha

EDM Wire and Sinker – 5 machines

- Sodick



Quality Assurance inspection and Laboratory

CMM and Reverse Engineering

- Zeiss Contura
- Faro Arm

Inspection

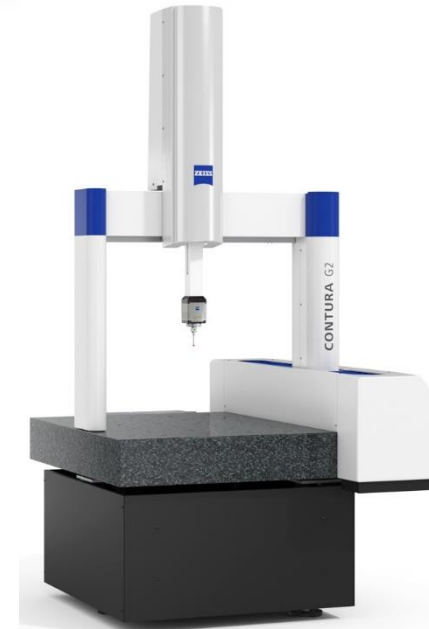
- Starrett Vision System
- Starrett Optical Comparator

Measurement tools

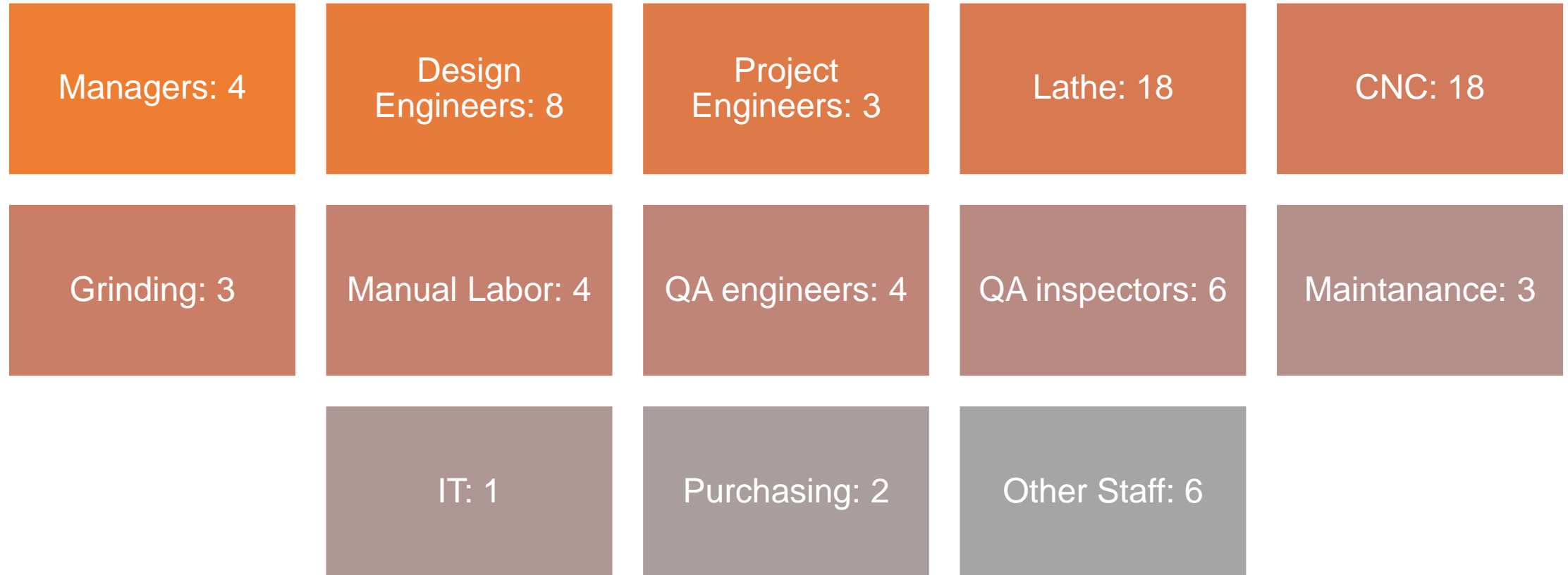
- Mitutoyo
- Roughness Tester
- Hardness Tester

Marking

- Laser
- Engraving



Organization



2 Full staffed shifts
1 Partial shift

Monday – Friday

7:00 – 00:00
00:00 – 7:00

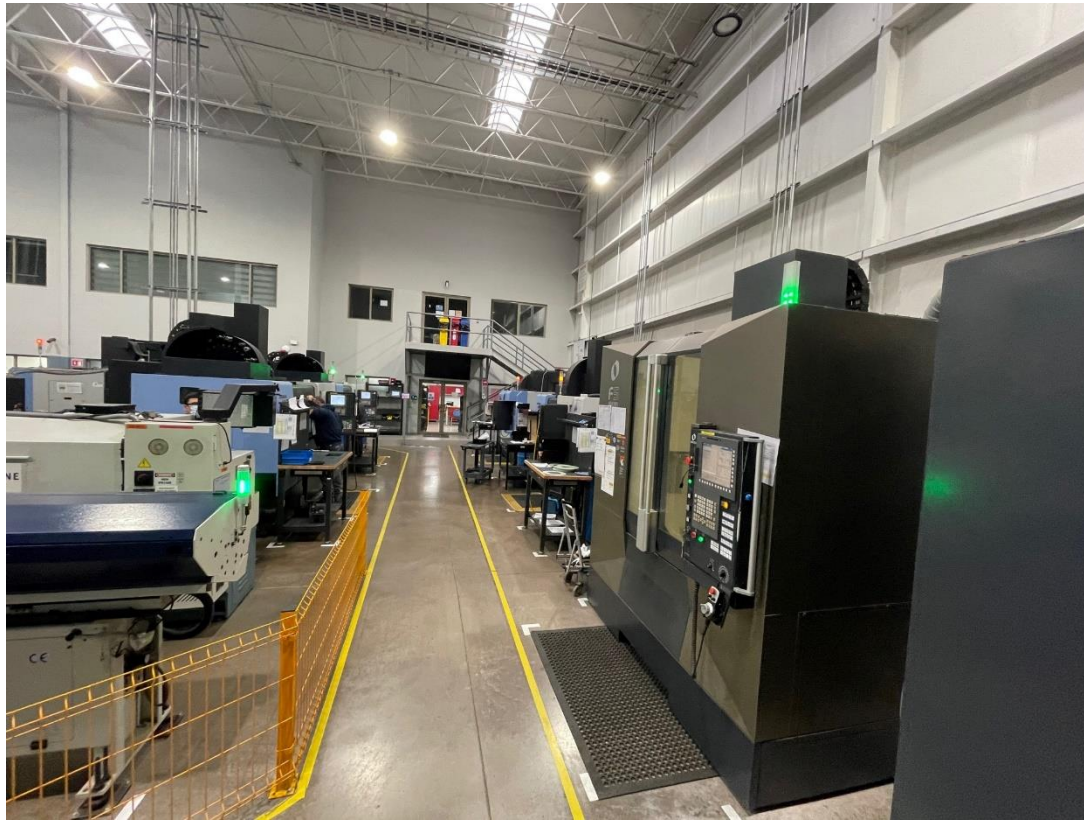
OKUMA 5 axis and Doosan 3+1 axis



CNC Lathes and Swiss type Lathe



CNC High Speed Milling



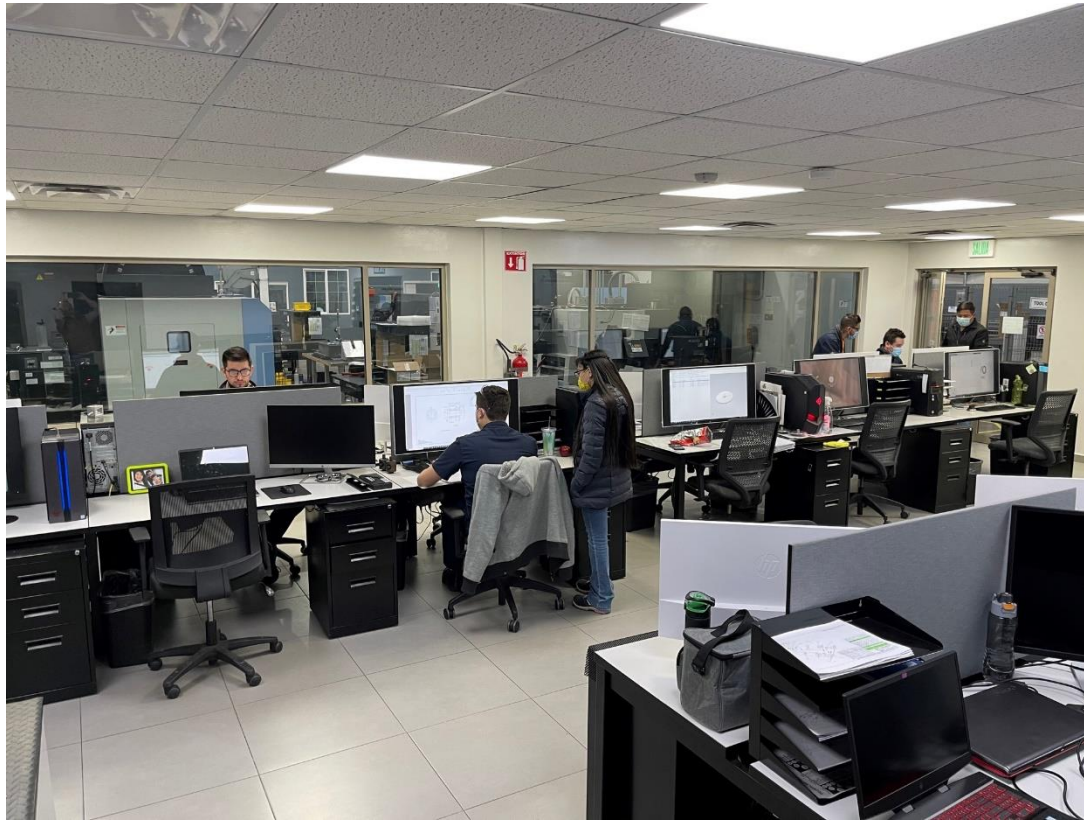
Sodick Wire and Sinker EDMs



CMM and Quality Assurance Laboratory



Design Engineering and Meeting Room



Tool Crib and Materials Warehouse



Expansion Plans



MAKINOVO

CNC • PRECISION MACHINING

BY  PALOMINO

Contact:



(614) 388 6200



(614) 278 0779



sales@makinovo.com