



FOXCONN[©]

B A J A C A L I F O R N I A

An aerial photograph of a large industrial complex, identified as a Foxconn facility in Baja California. The image shows several large, interconnected industrial buildings with flat roofs, some featuring solar panels. A large parking lot filled with cars is visible in the foreground, along with landscaped areas with trees and a small pond. The text "COMPANY OVERVIEW" is overlaid in large, white, sans-serif capital letters across the center of the image. The overall tone is professional and industrial.

COMPANY OVERVIEW

The image shows a large, modern building with a prominent 'FOXCONN' logo on its facade. The building is partially obscured by a dark, geometric, lattice-like structure in the foreground. The scene is set in a desert-like environment with some trees and a paved area in the foreground.

About Us

Foxconn Baja California is located in the city of Tijuana, Baja California, México; being one of the factories with the highest level of integration forming part of the world's largest electronic manufacturer, headquartered in Taiwan under the name of Hon Hai Precision Industry Co. Ltd.



GLOBAL FOOTPRINT (E-GROUP)

(non-China)



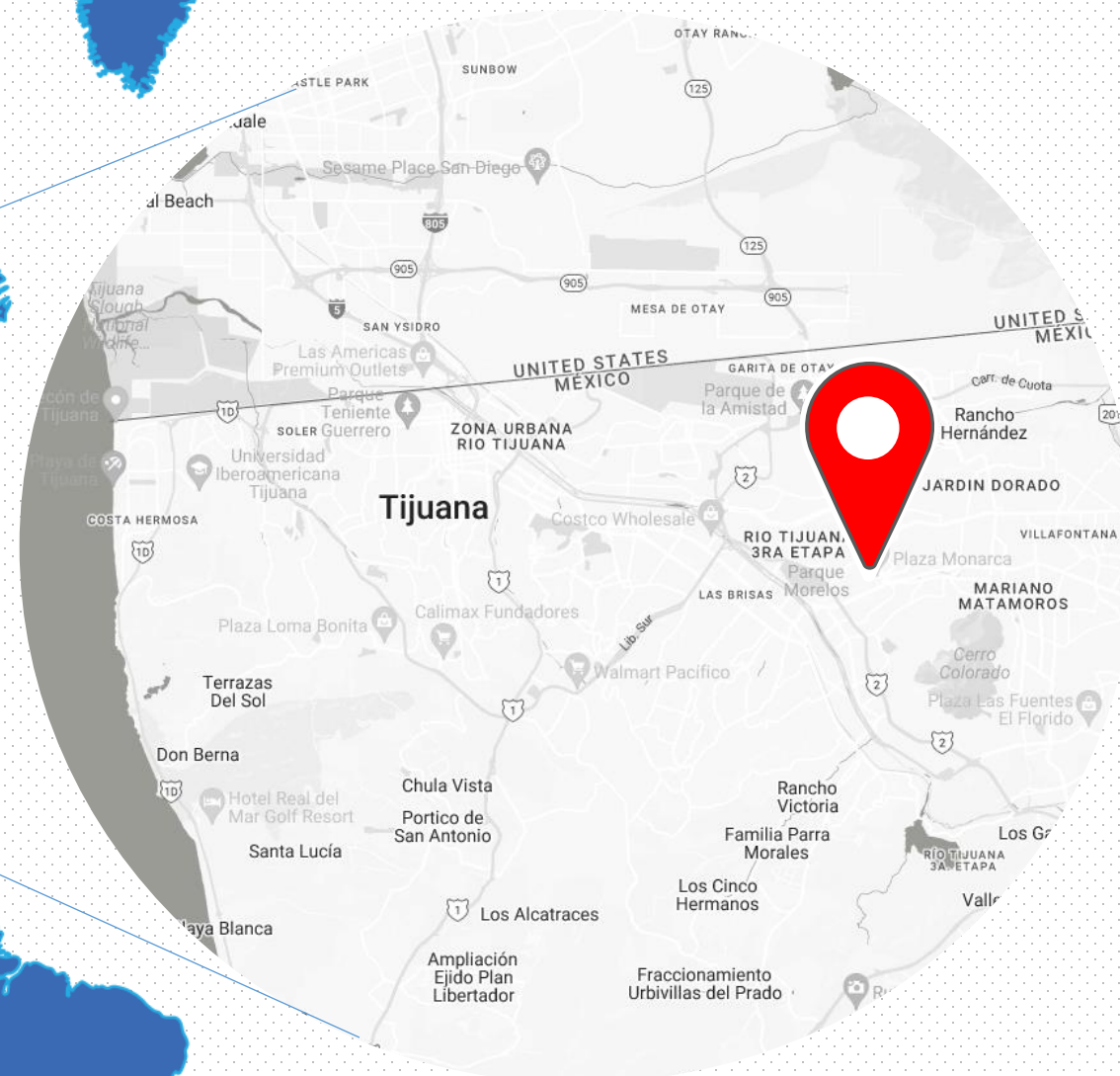
We make solutions to improve people's life

Mission

We contribute to our customer's success by developing cost-effective products and services through our people's determination.

Vision

To become leaders in developing creative, competitive and comprehensive solutions for our customers.



15
minutes
from USA



CURRENT CAMPUS MAIN BUILDINGS

FMC

FLMX

FOXCONN
BAJA CALIFORNIA

VERTICAL INTEGRATION

One of the key strengths of FBC resides in the level of vertical integration implemented and as part of such strategy, it established ESON/Multiwin de Mexico with relevant capabilities in terms of metal stamping and injection molding.



Date of Establishment: OCT 2009
Main Products: Plastics & Metal parts
Employees: 1600



Less than
30MIN
From FBC to ESON

CERTIFICATIONS & PROGRAMS

Foxconn Baja California is committed to its customers with the best quality strengthening the long-term relationship.



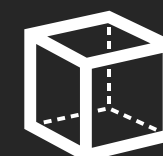
OUR CUSTOMERS



MEDICAL



**CONSUMER
ELECTRONICS**



INDUSTRIAL



AUTOMOTIVE

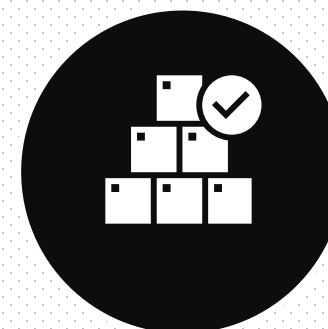


In Foxconn, we dedicate our expertise and experience to help change the world. With our skills and tools, we conceptualize and test your idea.



— OUR VALUE PROPOSITION

We bring your product to life, from conception and prototyping to engineering and advanced manufacturing.



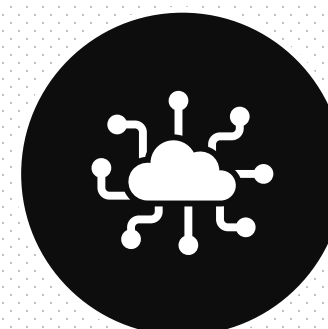
QUALITY

Electronic Traceability & Training Systems, Robust Quality System, Supplier Quality Metrics



CUSTOMER SATISFACTION

Skilled CFT, SME's, Motivated Experience Professional



TECHNOLOGY

Technology Platforms, Real-time Data Management, Systems Integration, Software development



— OUR SOLUTIONS

/01

Research & Development

Our R&D team flexibly support manufacturers in the process of continuous delivery of innovation.

/03

Material Sourcing

We strongly leverage our experience in Asian markets and our global manufacturing footprint. Our economies of scale, as well as our centralized tendering platforms, ensure, we buy at the most competitive prices.

/05

Logistics and Warehousing

Our solutions feature secured storage and control of high-value material, real-time stock visibility, customs brokerage, quality inspections, and screening and sorting services.

/02

Assembly and Product Customization

Our assembly lines are designed with customer flexibility in mind to accommodate changes in line setup & customization when needed.

/04

Manufacturing

Advanced Surface Mount Technology, supplemented with high quality precision mechanical operations.

/06

After Sales

Our experienced technical team executes the repair and fulfillment for both in and out of warranty products.

CAPABILITIES AND SERVICES

A team of Mexican engineers with extensive experience in the following areas: Mechanical, Electrical, Software, and Security Engineering.



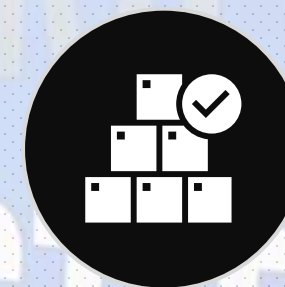
Manufacturing

- PCBA
- Product Assembly Test Solutions
- Real-Time Systems Integration Traceability System
- Quality Management Systems Vertical Integration



Engineering

- Advanced Manufacturing Assembly Technologies NPI
- R&D
- Value Engineering
- Test Laboratory Facilities DFM & DFT
- Intellectual Property Protection Manufacturing 4.0



Quality Systems

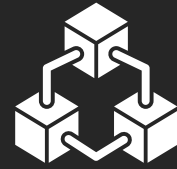
- Quality Engineering Quality Management
- In-process quality inspection points
- Quality Certifications: ISO 13485/ 21 CFR 820, ISO 14000, ISO 9001
- Supplier Quality Metrics



Other Services

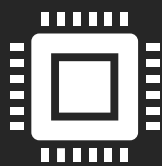
- Supply Chain Management Multi Modal Logistics
- In-house Information Technology Systems
- International Trade and Customs
- In-house Mexican and US Customs brokers
- After Market Services

CAPABILITIES AND SERVICES



SMT

- Is our core technology, 30+ years of experience in this capability, 3D, IOA, coating process, functional test development, and in-circuit test are our areas of expertise.
- In PCA Manufacturing & Operations Foxconn BC, we develop manufacturing solutions, operating procedures, operating structures, qualification of materials, and equipment that are of great benefit



Surface Mount Technology

- Development and assembly of electrical and functional test equipment.
- Low-level Assemblies/High Level Assemblies, Box Building.
- Manufacturing process with essential and product-specific controls. Shop Floor control system
- Traceability (product, parts or components)
- Trials (NPI) in PCBA
- Conformal coating – Applications Process Improvement



SMT CAPACITY



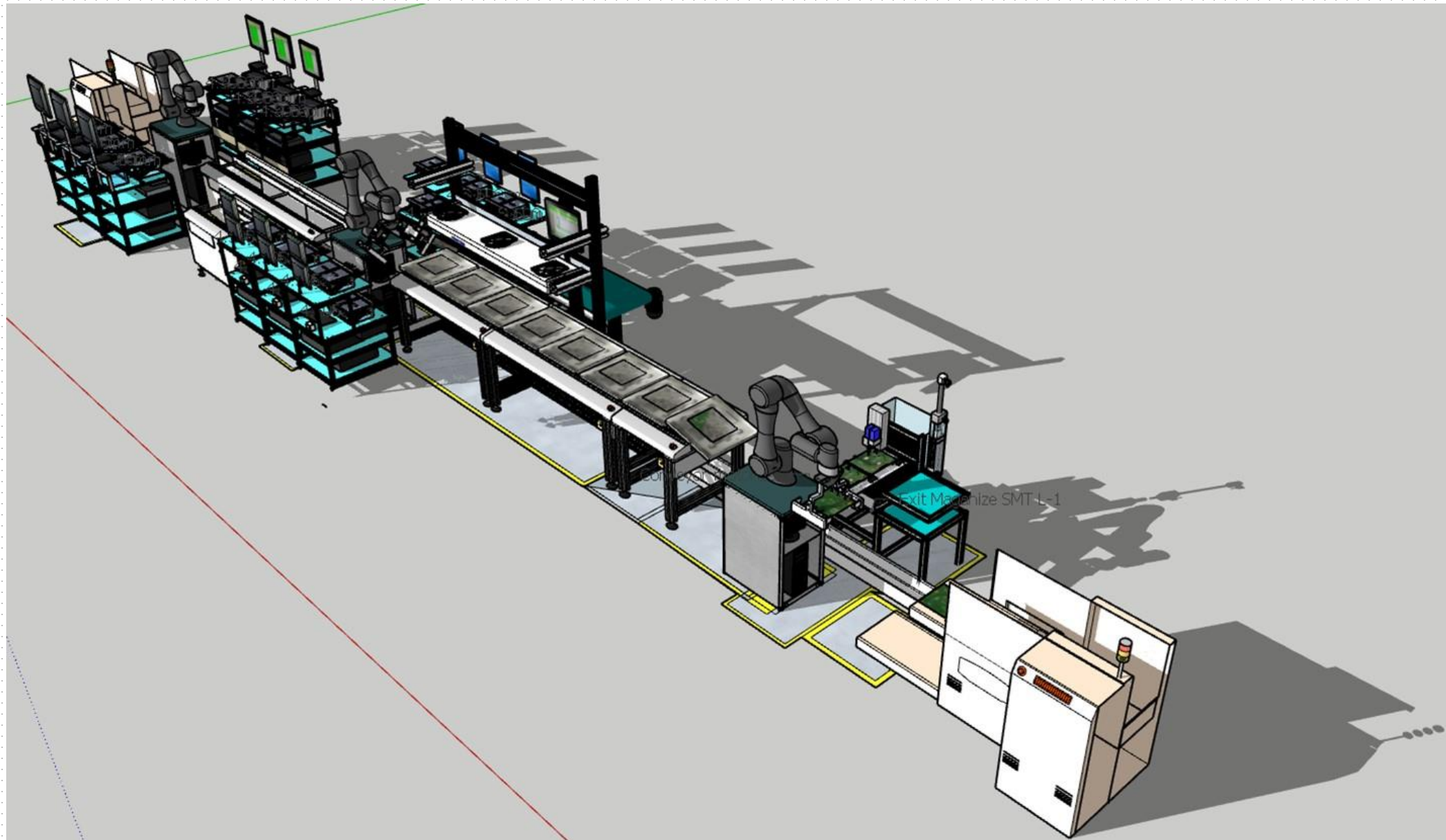
33 SMT Lines

150 SMT Machines
in operation

40 Million
daily shots

TEST EQUIPMENT Engineering

PCBA Testing and Handling Automatic by Robots



Capabilities

Software Development:

LabVIEW NI, Test Stand NI, Vision, .NET programming, C, C++, Linux, Android.

Hardware Development:

PCB Design, Automation, Pneumatic, AutoCAD, SolidWorks, Orcad, etc.

Knowledge

Communication Protocols:

RS232, I2C, SPI, IR, USB, Ethernet, TCP IP, Wi-Fi, Bluetooth, RFID.

Video:

LVDS, V by One, HDMI, 4K, 3D, Colorimeters Analyzers, Uniformity & White Balance ADJ

Audio:

DAQ measurements, THD validation, Spectrum Analysis

Electrical:

Hi-pot Testers, Power Meters, Analogical & Digital Analysis



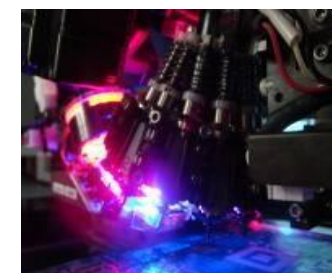
SMT Engineering Capabilities

White Room Environment Creation



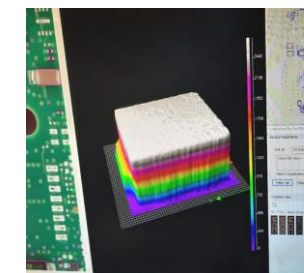
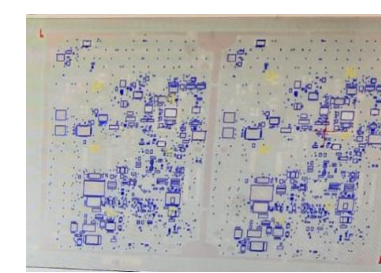
- Dust Elimination
- ESD Safe area
- Humidity & Temperature Control
- Discipline

Engineering Activities



- Machine Maintenance
- Replacement Parts Control
- Key Parameters Standardization

Process Engineering



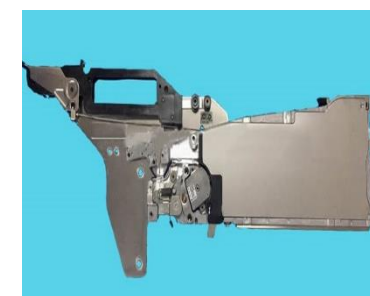
- Printing Parameters Control
- Stencil Design
- Reflow Oven parameter control

Operation Efficiency



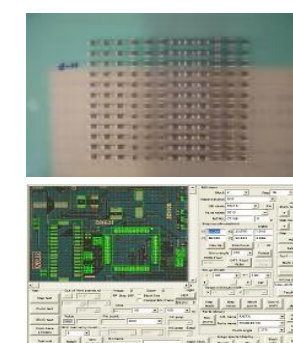
- Roles clear definition
- Process Standardization
- Simple and effective process

Basic Parts Control Nozzles & Feeders



- Nozzle Control and maintenance
- Feeder calibration program

NC Programs and Parts libraries Control

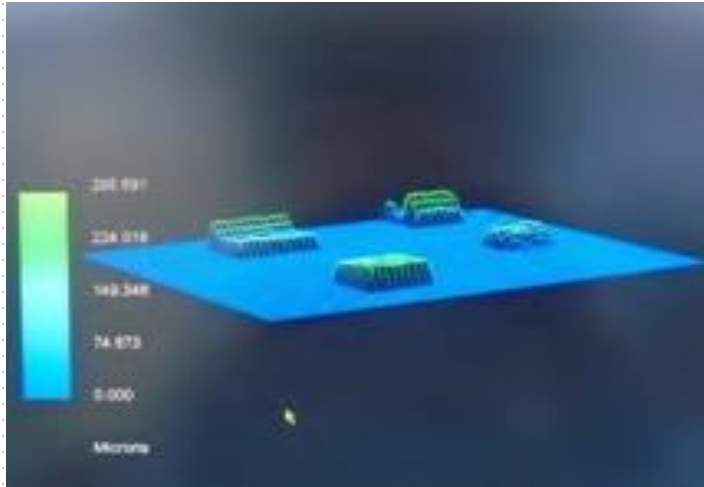


AOI Detection Ratio/False reject
elimination
Mount Rate Real time monitoring system

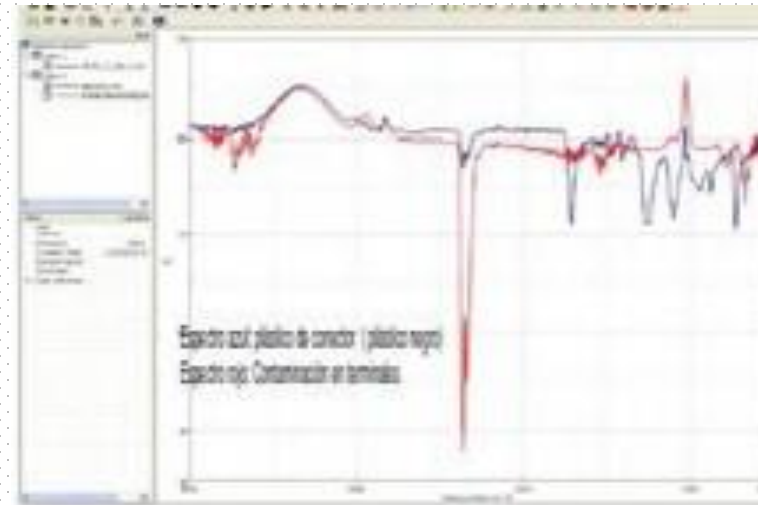


PCBA ENGINEERING Capabilities

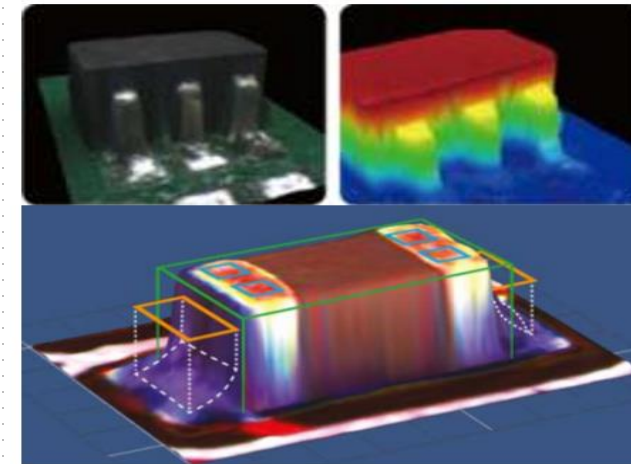
Soldering Evaluation & PWB Reliability Evaluation



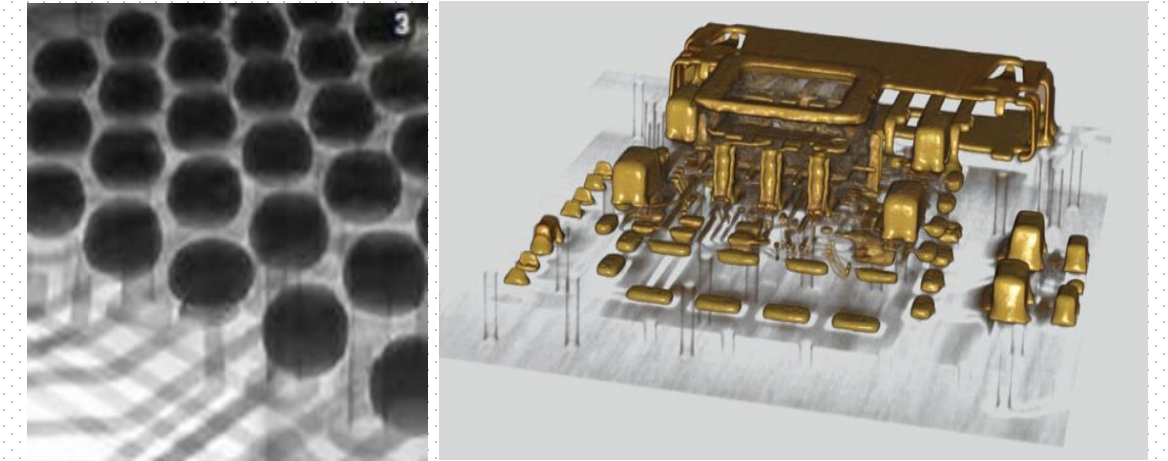
SOLDER PASTE 3D



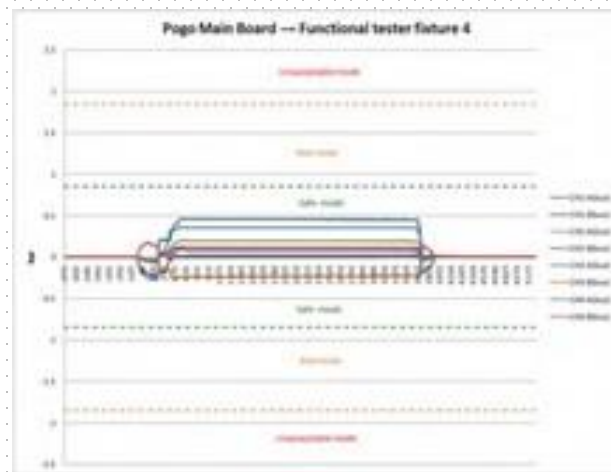
FT IR RESULTS
ORGANIC MATERIALS



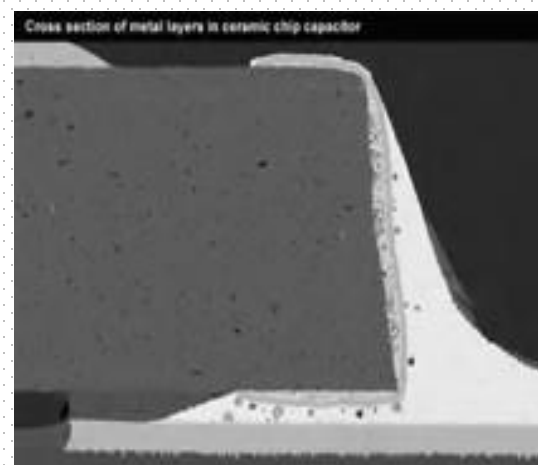
3D X RAY
INSPECTION



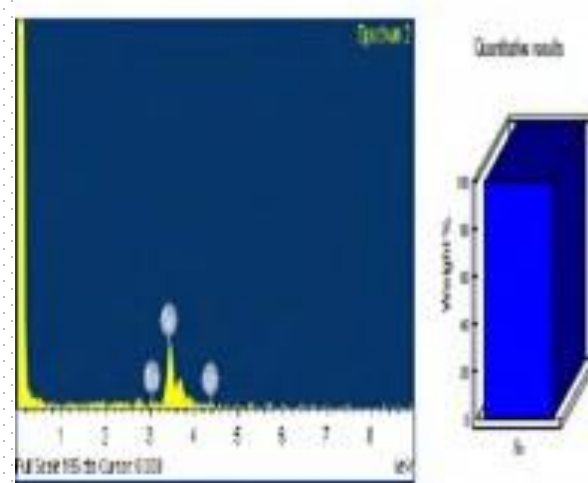
3D X RAY INSPECTION



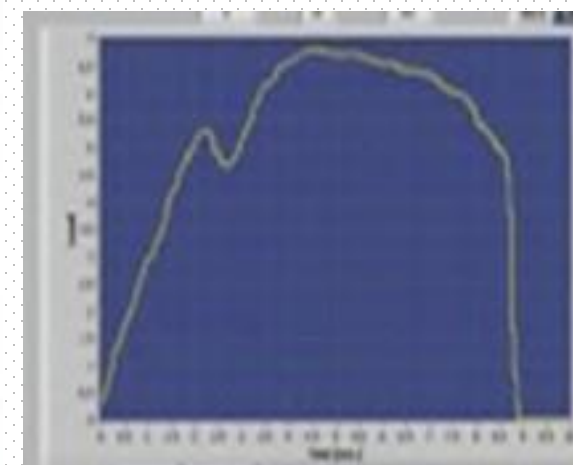
STRAIN GAGES
TEST



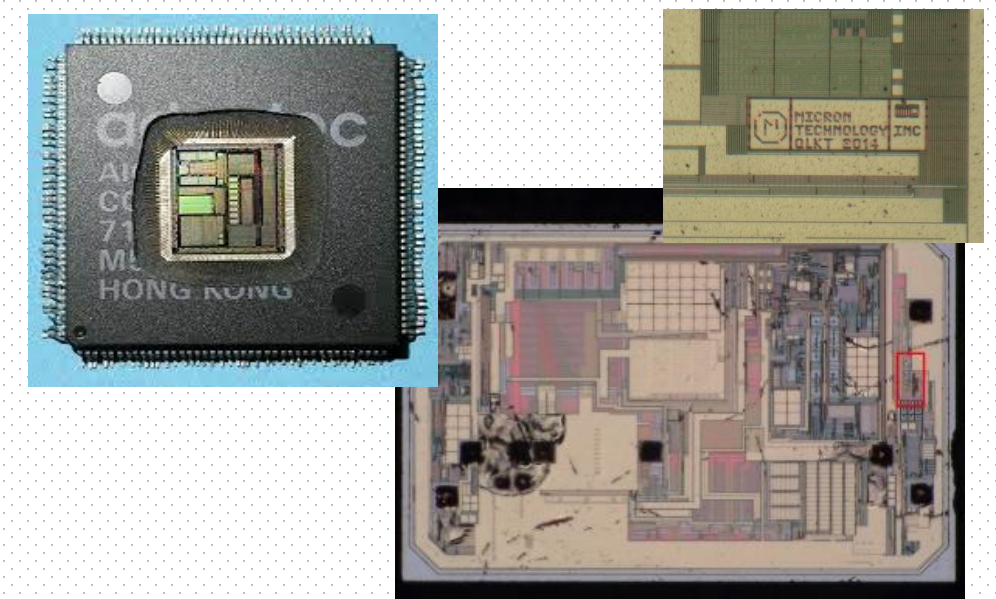
CROSS SECTION
INTERMETALLIC



EDS MATERIALS
ELEMENTS



TENSION FORCE
COMPRESSION &
PULL TEST



DECAPSULATION



PCBA ENGINEERING

Facilities & Functions



Wetting Tester Parts
Wetting Evaluation



Tackiness Tester
Solder paste
thickness



Reflow
Simulation



Cross Section
Cutting / Polish



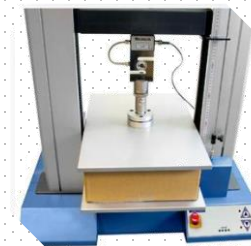
Metallographic
observation



SEM & EDS
Element
Composition



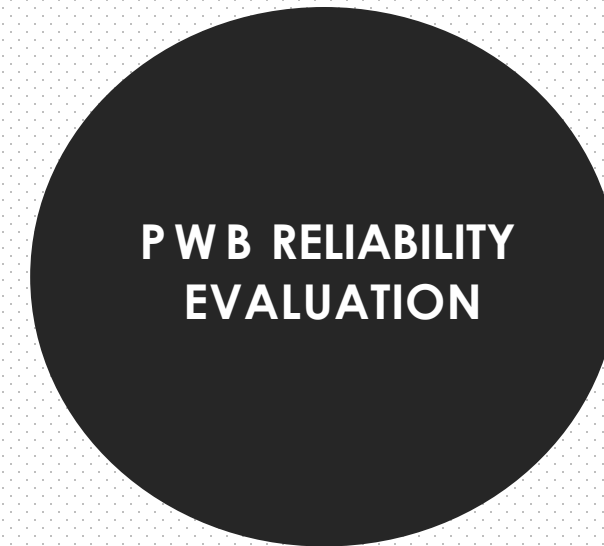
Solder paste
Height



Tensiometer



Humidity
Chamber
Moisture
Soaker



Thermal Shock
High & low temperature
cycle



Stencils
Incoming



Strain
Gages



Superficial
Observation



FT/IR Organic
Elements Wave
form comparison



X ray
Machine



Video
Scope Parts
Accuracy



PCBA ENGINEERING

Facilities & Functions

FOXCONN
BAJA CALIFORNIA

PCBA Process and Equipment



Conformal Coating
Application



PCBA Washer Machine



Ionic Contamination
Tester



PCBA Depanelization
Machine



Device Data Write
(SDRAM)



PCBA ENGINEERING

Facilities & Functions

PCBA Process and Equipment



Conformal Coating
Application



PCBA Washer Machine



Ionic Contamination
Tester



PCBA Depanelization
Machine



Laser Cutter for
Flexible Boards



X-Ray Machine 3D and CT
scan



SUPPLY CHAIN MANAGEMENT



SUPPLY CHAIN SOLUTIONS

For FBC it is very important to have a reliable and efficient supply chain that guarantees the satisfaction of our clients, and that is why we have developed improvement strategies and continuous work in the processes to counteract variations in the global market.

With a global strength in the supply chain, FBC has a team located in the city of Tijuana that joins forces with the centralized purchasing team of the Hon Hai Precision group, located in the city of Yantai, China



FBC strategically selects suppliers depending on the type of product to be manufactured, (PCB, Medical device, or automotive), LT, unit price, MOQ, incoterms, flexibility on the stock operation.

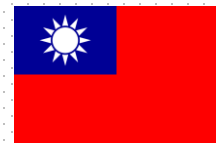


OVERSEAS SUPPLIERS' MATERIAL LOGISTICS



Philippines

- Manila (A)



Taiwan

- Talchung
- Kaohsiung
- Taipei (A)



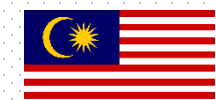
Thailand

- Laem Chabang
- Bangkok (O&A)



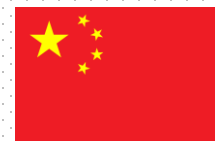
Singapore

- Singapore (O&A)



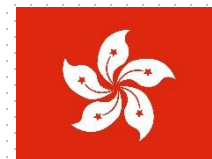
Malaysia

- Penang (O&A)
- Port Klang
- Tanjung Pepelas
- Kuala Lumpur (A)



China

- Yatian
- Shan Port Klang
- Tanjung Pepelas, MY
- Shanghai (O&A)
- Ningbo



Hong Kong

- Hong Kong (O&A)



Japan

- Nagoya
- Kobe
- Yokohama
- Narita (A)
- Tokyo (A)



Korea

- Busan
- Kwangyang, KR
- Incheon (A)



Vietnam

- Hochiminh

Import US: Imported Inbound
(T&E) Clearance, No Duty

PORT USAGE (IMP)

Long Beach -> 10%
Ensenada Port -> 90%



Los Angeles Airport

Long Beach Port



US Warehouse
Otay Yard

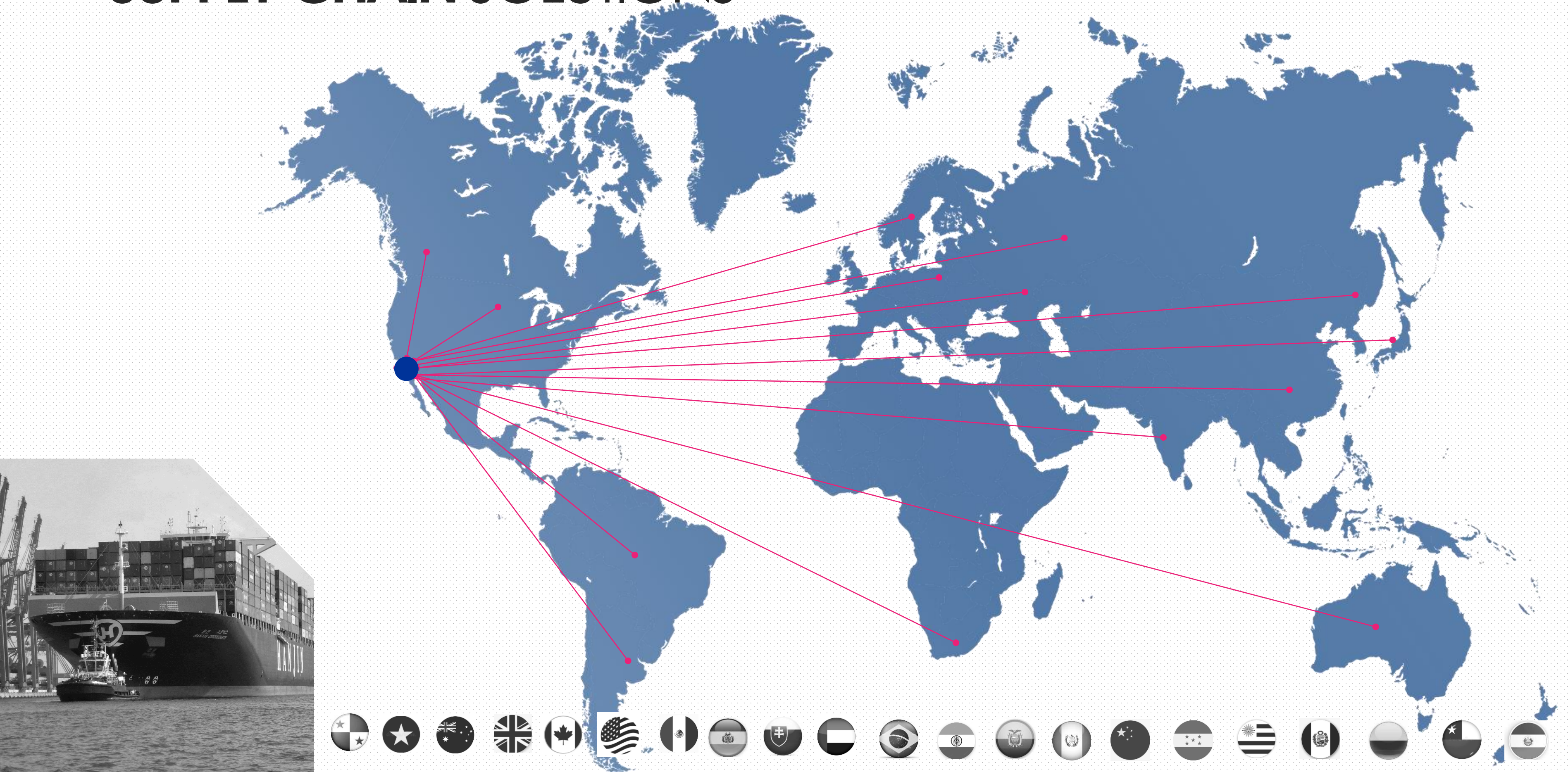


Ensenada Port





SUPPLY CHAIN SOLUTIONS



An aerial photograph of a large industrial complex, identified as a Foxconn facility in Baja California. The image shows several large, interconnected buildings with flat roofs, some featuring solar panels. A large parking lot filled with cars is visible in the foreground. The text "THANK YOU" is overlaid in large, white, sans-serif capital letters across the center of the image. The overall tone is sepia or monochrome, giving it a formal and commemorative feel.

THANK YOU