



Company Profile 2022

CREATIVE CONNECTIVITY

—Challenge, Creativity, Solutions

SMK's Vision

CREATIVE CONNECTIVITY

—Challenge, Creativity, Solutions

Our vision, CREATIVE CONNECTIVITY, highlights our determination to contribute to the creation of a better society and future by connecting people to people, people to products, and products to products creatively to resolve the various challenge before society and customers.

**A company in high demand in society, a company with a culture to develop human resources:
that is what SMK aspires to be.**

Contents

02	Top Message
03-05	Market
06	SMK's Connectivity
07	Division
08-12	Sustainability & CSR
13	Medium-Term Business Plan
14	Innovation
15-20	Company Info

Founding Spirit

Good Parts Create Good Final Products



SMK Philosophy

SMK is committed to the advancement of mankind through development of the information society, by integrating its current technological strengths and creating advanced technology.

SMK Action Guidelines

1. Contribute to society with pride and confidence.
2. Be customer-oriented, with zeal and sincerity.
3. Challenge courageously for higher goals without fear of failure.
4. Trust and respect each other for a brighter working atmosphere.
5. Keep an open mind, and view SMK from a global perspective.

Top Message

Since its foundation in 1925, the SMK group has responded appropriately to the changing market while preserving our founding spirit of “Good Parts Create Good Final Products.” And under the SMK Philosophy, we have always developed pioneering technologies and provided attractive products and services to markets and customers around the globe.

Although the global economy is in the process of seeking to coexist with COVID-19, the future remains uncertain due to factors such as ongoing inflation in many countries, soaring energy and raw material prices, and heightened geopolitical risks including the crisis in Ukraine.

On the other hand, the major transformation of the automotive industry by developments in CASE technologies and the rapid progress in the digitalization of society as a whole due to the full-scale spread of 5G and IoT has expanded the fields in which SMK can contribute.

In this environment, the Company is aggressively introducing new products and making its foray into new markets in order to achieve sustainable growth. We are also working to create new business through collaboration with partners and open innovation. At the same time, we aim to contribute to a sustainable society through efforts towards achieving the SDGs and carbon neutrality, and to strengthen our corporate structure by promoting Digital Transformation (DX).

Under our vision of “CREATIVE CONNECTIVITY—Challenge, Creativity, Solutions,” we will continue to strive to become a company that can contribute to the creation of a better society and a future by providing creativity to generate creative ideas and problem-solving solutions with a challenging spirit to solve various issues faced by society and our customers.



President, CEO and COO
Yasumitsu Ikeda

Information and Communication Technology

ICT

Smartphone	Network Equipment
Tablet	Tracking Device
PC	Electronic Dictionary
Wearable	

Industry/Others

Renewable Energy	ATM
Healthcare	ECR/POS
Lighting Equipment	Industrial Robot
Multi-functional Machine	



Home Appliance

TV	Gaming Console
STB	Sanitary
Smart Speaker	Housing Equipment
Air Conditioner	Home Security

Car Electronics

CASE	Antenna
Car Navigation Equipment	Electrical Device
Display Audio	ECU



In use all around you.

ICT



Terminals for
Small Mobile Devices



USB Type-C®
Receptacles



φ3.5mm Mini Jacks



Board to Board
Connectors



Coaxial FAKRA
Connectors



FPC/FFC Connectors
with Locking Structure



RF Board to Board
Connectors



Capacitive
Touch Switches



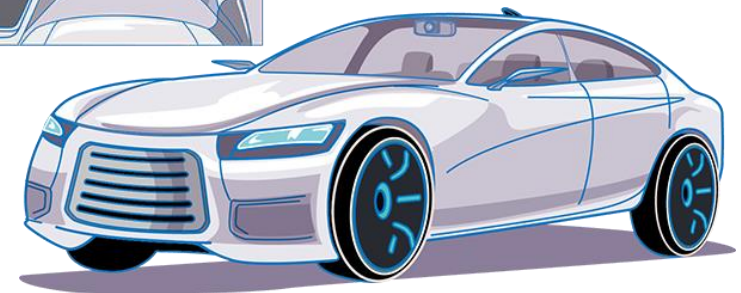
Mini 1-Dome Switches



Resistive Film/Glass
Touch Panels



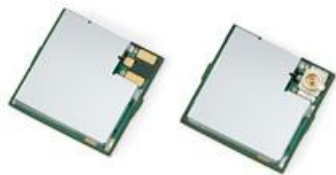
Capacitive Touch Panels
with Large Curved Cover Glass



Home Appliance & Industry/Others



Connectors for Photovoltaic Modules



Sub-GHz RF Modules



RF Remote Control Units



Card-Style Remote Control Units



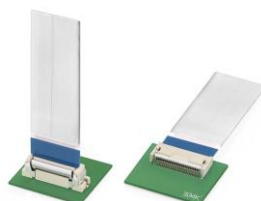
Resistive Touch Panels



Jacks



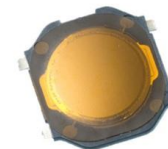
Jog Dial on Touch Panel



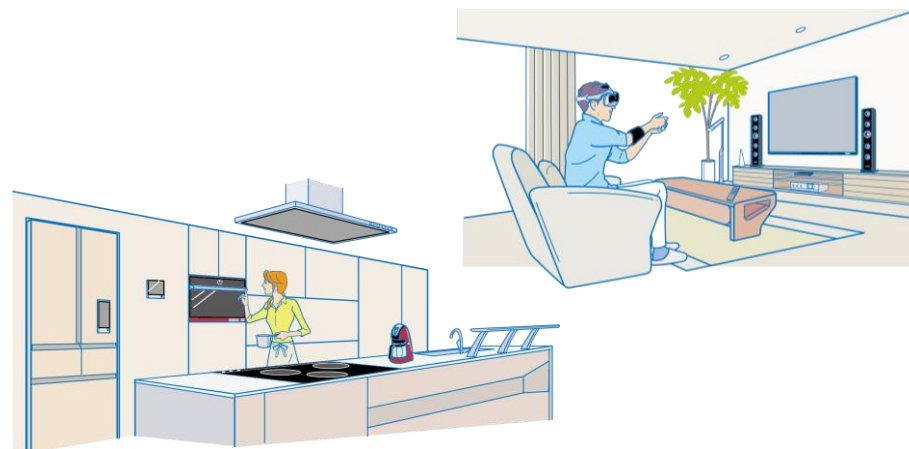
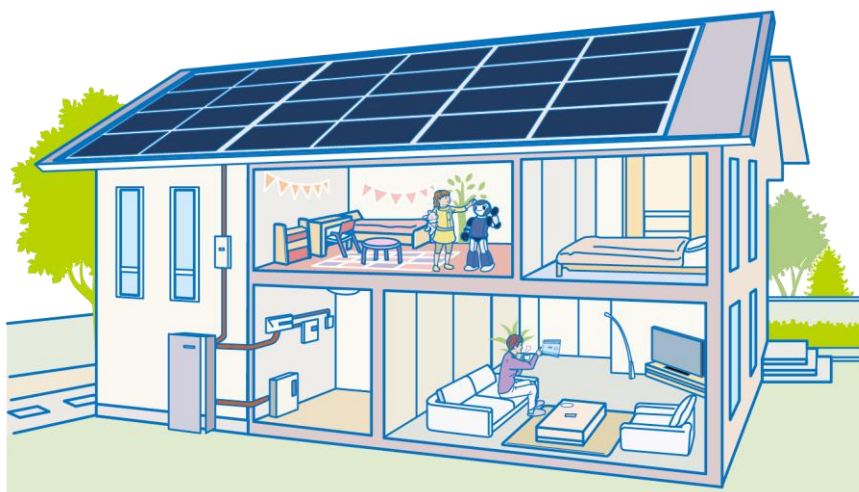
0.5mm Pitch One Action
FPC/FFC Connectors



Capacitive Touch Panels



Top Push Switches





Our marketing and sales collects and analyzes the latest data for a range of markets and expands development proposals for new products and the opening up of new markets. SMK's two product divisions and the Research & Development Center develop and manufacture a wide variety of products for use in various fields. With the pursuit of high-level technology and speedy cost response capabilities as our key words, each department—Production Engineering, which establishes higher-level, efficient product systems; Quality Assurance, which believes in absolute quality and serves as the pivotal point for SMK's quality; and Human Resources, which trains the people who support SMK based on the spirit of "autonomy, self-help, and independence"—is linked transnationally, providing proposals to make society richer and more comfortable.

CS Division

Connectors are the cornerstone of electronics. We contribute to improving added value for customer products, using the techniques for miniaturization, high currents and high speed transmission we have developed over the years to make mobile devices smaller and thinner, to increase current in industrial devices, or to increase the transmission speed of car electronics. We are expanding into a wide range of markets, with uses as diverse as smartphones, tablets, car electronics, and IoT home appliances, as well as wearable devices, the environment and energy, and medical and healthcare areas.

* CS: Connection System



FPC to Board Connectors



USB Type-C® Receptacles



Connectors
for Photovoltaic Modules



φ3.5mm Mini Jacks



SCI Division

In addition to our main products such as remote control units, switches, camera modules, and touch panels, we are working on creating new markets, new business, and new products by accelerating the development of "Sensing" technology supporting the IoT era, "Communication" technology contributing to the advancement of an information society, and "Interface" technology pursuing better operability in automotive and other application.

* SCI: Sensing, Communications and Interface



Bluetooth® low energy-Supported
Voice Remote Control Units



Push Switches



Ambient Sensor Units

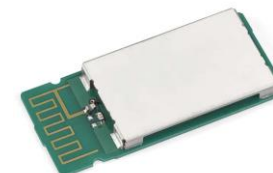


Capacitive Touch Panels



Research & Development Center

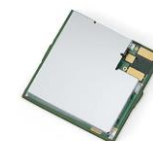
The Research & Development Center independently researches and develops standard items and new technologies. It plays a leading role in developing wireless modules based on high-frequency waves such as Bluetooth® modules and Sub-GHz modules. In addition, it has its eye on fields where growth is expected, such as home networks and healthcare, and carries out research and development into next-generation products.



Dual-Mode Bluetooth®
Modules



Bluetooth® low energy
Modules



Sub-GHz RF Modules



For a Future
Where Everyone
Can Smile

SUSTAINABLE
DEVELOPMENT **GOALS**

Donation of school chairs made from used wooden pallets (Philippines)

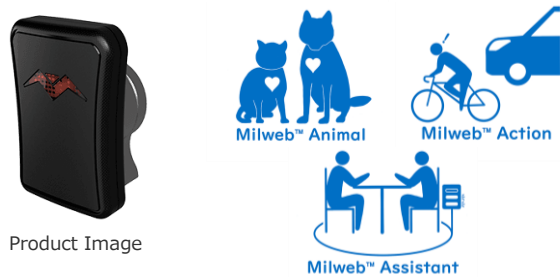


Solving social issues through products and services



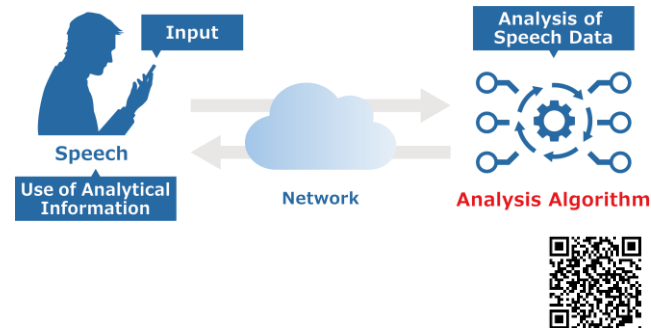
“Milweb™” Millimeter Wave Sensor

SMK has developed the “Milweb™” millimeter wave sensor, which combines a sensor that detects distance, speed, and angle with a proprietary algorithm that processes the gathered data. Three different types of algorithms are available: the “Milweb™ Animal” to monitor animals, the “Milweb™ Assistant” that can detect the number and location of people, and the “Milweb™ Action” which is best suited for avoiding dangers for moving bodies such as bicycles.



Technology to Analyze Illness and Emotions Through Speech

Research and development are being conducted on an algorithm to support the diagnosis of dementia using Japanese speech. Speech data using any phrase about 30 seconds long allows for the analysis of latent brain-related diseases and emotions as well as diagnostic support. (Joint R&D of SMK, National Cerebral and Cardiovascular Center, and Canary Speech, Inc.)



SCPS Bluetooth® Ambient Sensor

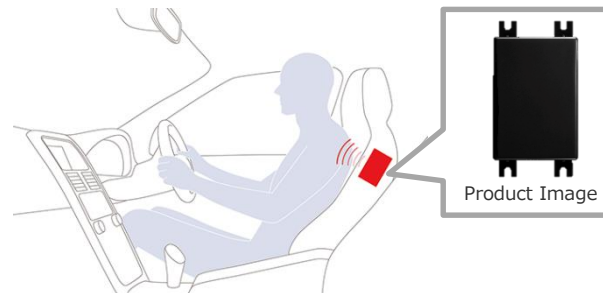
Featuring hybrid power supply system that combines energy harvesting by photovoltaic batteries and far-field wireless power transfer (WPT) technology to convert Sub-GHz microwaves into electricity. No battery replacement is required, resulting in reduced environmental impact, lower running costs, and less need for maintenance.

*SCPS = Self-Contained Power Supply



Radar-Based Vital Sensor (for Automotive Use)

The sensor uses radar-based sensing technology to collect biometric data (heart rate, respiration data, etc.) of drivers and passengers. As a sensor that can detect the driver's condition, it can be applied to alerting the driver in abnormal situations (drowsiness, loss of concentration, and sudden changes in physical condition) and creating a more comfortable car interior.



Environmental Management

Carbon neutral
Reduction of greenhouse gases
Efficient use of resources
Eco-friendly products
(resource and energy saving)
Biodiversity

E

Social Responsibility

Quality assurance
Supply chain
Respect for human rights
and diversity
Human resource
development
Fair trading
CSR procurement
Social contribution

S

G

Corporate Governance

Corporate governance
Compliance
Risk management
Information management

Solving social issues through business activities

Carbon Neutral

At SMK, we set a goal to achieve carbon neutrality by 2045, setting up a Carbon Neutral Taskforce and working across the SMK Group as a whole to achieve this goal.



Responsible Procurement

Under the recognition that “the environment is one of the important matters for corporate management,” we have promoted environmental initiatives in many aspects such as the development of products and in all activities at each of our locations.

At the same time, we have developed Green Procurement Guidelines to help materialize the creation of eco-friendly products and eco-conscious business activities with our business partners.



SMK Group Code of Conduct

The SMK Group Code of Conduct, which outlines conduct to be observed by employees, was established in April 2006. It was revised in accordance with the changes in the environment surrounding CSR, with the fourth edition issued in April 2021.



Quality Assurance

SMK aims to achieve Zero Defect (ZD). We are particularly focused on preventing problems in the manufacturing process from occurring earlier in the product development stage by Front-Loading development and Design Review.



Social Contribution

As a responsible corporation, we have been involved in a range of efforts including social welfare activities and regional contributions. In addition to tree planting activities and local beautification activities, we also have an intern acceptance program, hold manufacturing classes for elementary school students and participate in local festivals, and will continue to conduct these activities in the future.



Public Interest Incorporated Foundation Showa Ikeda Memorial Foundation



Established in 1976 in celebration of the 50th anniversary of the founding of the Company through the personal investment of SMK founder, the late Mr. Heishiro Ikeda and his wife, the late Mrs. Shizuko Ikeda, with partial donations from the Company.

Since its founding, the Foundation has carried out a number of charitable activities such as scholarship programs, social welfare projects and supporting traditional performing arts, and was certified as a public interest incorporated foundation in 2013.



At SMK, we promote activities to save energy and resources as an important management policy to help prevent global warming. We strive to contribute to local communities through various initiatives.

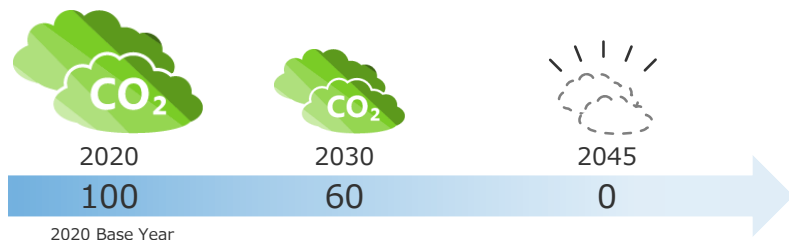
Striving for Carbon Neutrality

SMK has set a medium- to long-term goal of achieving carbon neutrality by 2045. As it is an initiative that will take place over a long period of time, we will ensure that knowledge is passed down across generations to steadily achieve this goal.

Main initiatives

- Expansion of energy-saving equipment
- Expansion of renewable energy power generation facilities

Reduction of CO₂ emissions
per unit of production value (Scope1+2)



SMK Environmental Charter

1. Basic Philosophy

The SMK Group pursues environmental conservation as well as economic development by integrating its current technological strengths and creating advanced technology. As a good corporate citizen, every one of us will contribute to the promotion of sustainable global development.

2. Action Guidelines

- (1) Develop environmentally friendly products
- (2) Reduce waste by using everything to its fullest extent
- (3) Preserve natural resources and saving of energy
- (4) Encourage 3R (reduce, reuse, and recycle)
- (5) Realize waste-free procurement and manufacturing

Learn more



Tackling Quality Improvement

At SMK, we employ an integrated quality management system based on the international standard ISO9001, and the basic concept is Ultimate Quality Management. This involves employees not just from divisions directly involved in production, but throughout the entire company.



Supply Chain Management

To provide products to customers, SMK receive assistance from many business partners and all our powers are added together to make a product. As long as that product is presented to the customer under the SMK name, SMK has an obligation to manage the supply chain, including its business partners. SMK orders from business partners only after a strict qualification, including an on-site process audit for new business partners. Audits are carried out at regular intervals and process line management activities are also checked. In addition, we hold regular quality meetings with business partners and provide recurring feedback on quality trends, while also discussing and sharing information on matters such as technical problem solutions.

Responsible Mineral Procurement

SMK strives to avoid the use of conflict minerals, which is globally considered as a problem. We also monitor whether actions contrary to social responsibilities have been taken by local trade partners and business partners, and provide guidance in such cases. Thus, we ensure transparency of the supply chain in cooperation with our business partners.

Promotion of Women's Participation

SMK has long promoted the building of an organization that respects diversity of human resources, and we employ a diverse range of people regardless of nationality or gender. We believe that the active participation of women is also an important management policy and offer systems to support the balance between work and child-rearing, create an environment where female employees can fulfill their potential, and promote a shift of awareness within the company.

Learn more



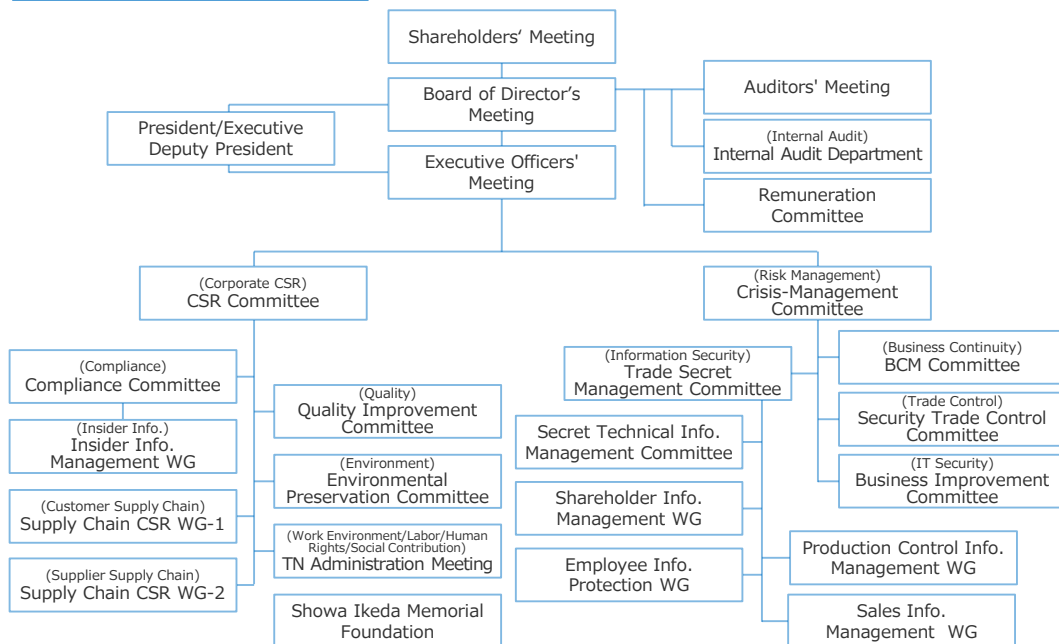
Achieving a sustainable society requires the promotion of CSR (Corporate Social Responsibility) by companies that have a major effect on society. SMK promotes CSR from a range of angles in order to meet our social responsibilities in our business activities both in Japan and overseas.

In 1997, we established the SMK Group Charter for Corporate Behavior as an announcement of our stance on approaches to CSR. In addition, we have adopted the concept of "PSR" (Personal Social Responsibility), which is unique to SMK, and established the SMK Group Code of Conduct in 2006 to request each employee to consider CSR and act responsibly. In line with the establishment of this Code, we have also set up the SMK Ethics Helpline, with contact portals both in the company and outside.

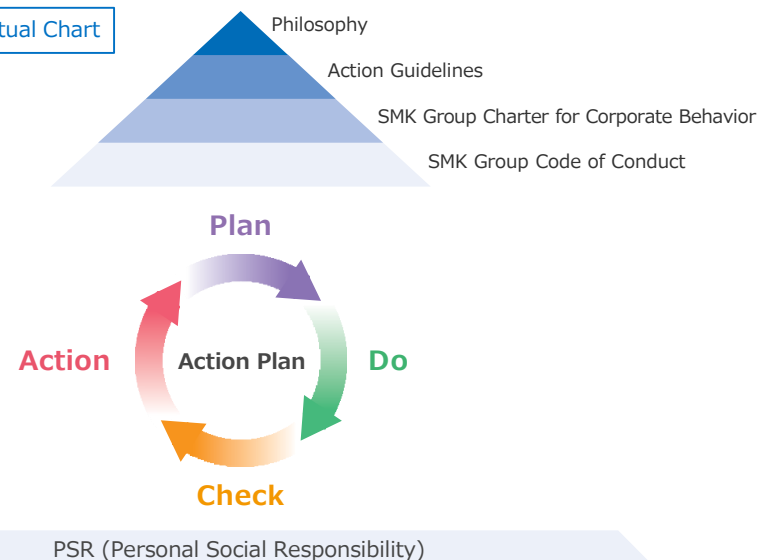
We also carry out regular questionnaires on the extent of compliance within SMK targeted at our business partners and customer satisfaction surveys targeted at our customers, reflecting the valuable feedback in our CSR activities.

In terms of risk management, which we have long been dealing with, we revised and strengthened our group-wide BCM (Business Continuity Management) after the Great East Japan Earthquake in 2011, minimizing the effects of a major disaster or other incident on our business activities, thus working to fulfill our responsibilities towards stakeholders.

Corporate Governance Diagram



SMK CSR Conceptual Chart



SMK Group Charter for Corporate Behavior

1. For customer confidence, we will develop and provide superior goods in terms of quality, cost, and safety through our accumulated advanced technology.
2. To be understood/supported by stakeholders such as customers, business partners, and shareholders, we will engage in fair, transparent, and free competition, under the spirit of independence, self-help, and self-regulation.
3. We will promote communication with society, by fairly disclosing corporate information, as an open enterprise in the advanced information network age. In addition, we will protect and properly manage personal and customer data and other types of information.
4. We will take independent and positive action, fully recognizing the necessity of environment conservation.
5. We will strive to make it possible for employees to lead pleasant and enriched lives, by guaranteeing a comfortable and safe work environment and respecting our employees' dignity and individuality.
6. We will actively engage in social contribution activities as a good corporate citizen.
7. We will stand firm against anti-social forces and organizations that threaten the order and security of civil society.
8. In overseas operations, we will comply with the laws and regulations of the countries and regions, respect human rights and other international norms, and manage ourselves in a manner that contributes to local development.
9. To make the spirit of the Charter a reality, top executives will always listen to the voices within and outside SMK, take the lead in raising awareness of the Charter among all relevant Group members and to bring corporate systems into line with it, and endeavor to cultivate corporate ethics.
10. When the Charter is violated, top executives will take the initiative in resolving the problem, endeavoring to clarify its causes and prevent its recurrence, and take the necessary action. This includes precise explanation to the society and punishment for responsible persons, including themselves.

Learn more



Toward New Growth — Confidence & Transformation

Medium-Term Business Plan FY2021-FY2023

SMK is currently working on our Medium-Term Business Plan for the three-year period of FY2021 to FY2023. We will solidify our business foundation by implementing growth strategies and further strengthening our corporate structure.

Basic Policy

Expand sales and generate stable profits

Reform corporate structure for new growth

[FY2023 Target]

Net sales

60.7 billion yen

Operating profit

3.1 billion yen

Operating profit margin

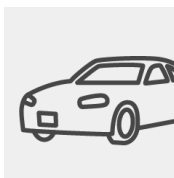
5 %

Return on equity

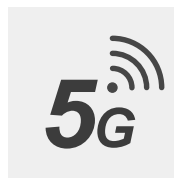
8 %

[Growth Markets to Focus On]

CASE



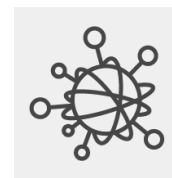
5G



Wearable



IoT



Healthcare



[TRANSFORMATION Toward FY2023]

**Grow Continuously,
Be Competitive,
and
Provide Solutions**

Enhancement of cost competitiveness

Improve quality
Review workflow
Promote automation and smart factories

Focus on value-added products

Review portfolio of business and products
Accelerate open innovation

Diversification of business models

Shift to solution sales that captures market trends and customer needs
Hardware + software + service

[Open Innovation by SMK]

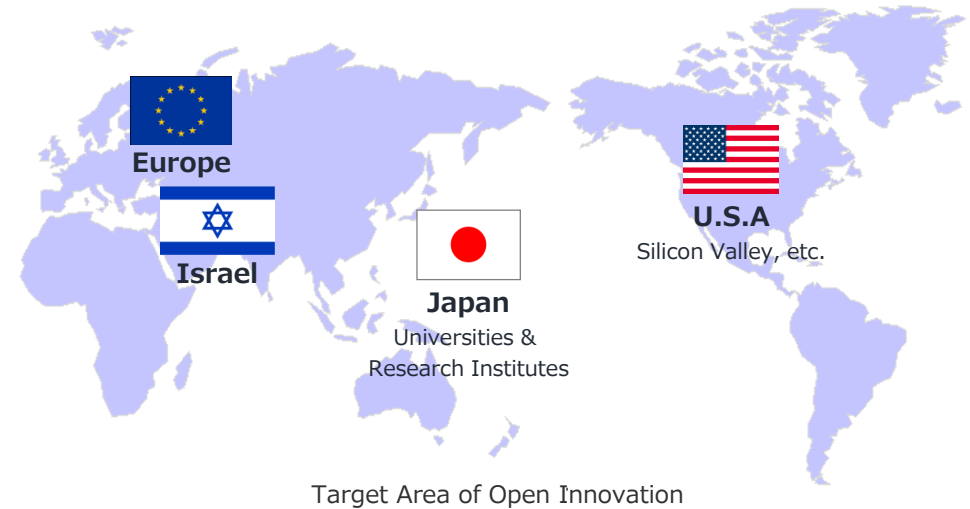
SMK has long worked on open innovation and has gained a great deal of experience and achievements. We search through more than 1,000 companies annually for technologies around the world, mainly from Europe, the United States, and Israel, and have built up a proven record of various technological verifications and PoCs, producing a large number of different businesses working toward mass production. We promote the creation of new solutions and businesses that can be deployed on a global scale by combining cutting-edge algorithms, AI and other technologies of startup companies with SMK's mass production design and manufacturing expertise.



[SMK's Innovation Matching]

SMK's development themes cover a wide range and we conduct technology discovery with many different keywords, such as biometric sensors, malfunction detection, camera technology, car electronics, HMI and predictive algorithms.

As information sources, the Company has many networks at its disposal including venture capital, embassies, universities, and trade shows, and constantly examines the information gathered. SMK's project teams promote business development by innovatively matching the internally assessed technology seeds with customer issues and needs.

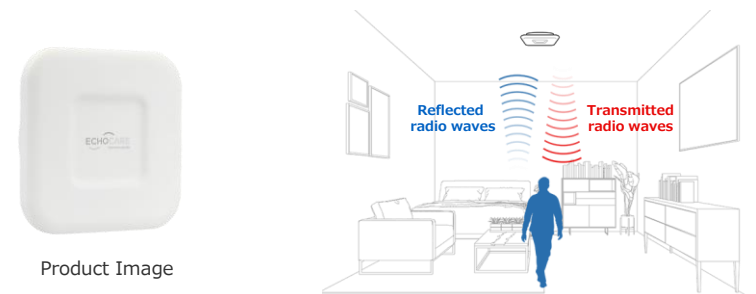


[UWB Type Monitoring Sensor]

A high-functional, non-contact, camera-less radar-based monitoring system. By analyzing the radio waves reflected from the subject, the system detects their location, position, breathing, and intensity of movements.

A proprietary algorithm that uses AI and machine learning analyzes this data, making it possible to detect abnormal conditions such as falls and submersion in bathtubs with high accuracy.

It can be used in a variety of situations to monitor daily life situations safely and securely.





● Company Name	SMK Corporation
● Established	1925
● Capital	7,996 million yen
● Stock Exchange Listing	Tokyo Stock Exchange, Prime Market (Securities Code: 6798)
● Shares	Authorized shares 19,596,127 Issued shares 7,200,000 (as of June 30, 2022)
● Settlement Term	March 31
● Sales	48,243 million yen (Consolidated)
● Employees	4,963 (Consolidated)
● Head Office	5-5, Togoshi 6-chome, Shinagawa-ku, Tokyo 142-8511
● URL	https://www.smk.co.jp/

Directors



President, Chief Executive Officer and Chief Operating Officer
Yasumitsu Ikeda



Director and Executive Deputy President, Chief Technology Officer
Masanobu Ikeo



Director and Executive Vice President
Paul Evans



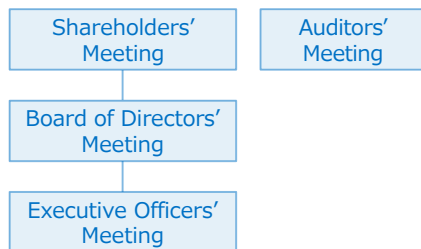
Director and Executive Vice President
Tetsuo Hara



Director (Outside)
Toshio Nakamura



Director (Outside)
Kaoru Ishikawa



Auditors



Full-Time Auditor (Outside)
Morikazu Fukui



Auditor (Outside)
Naru Nakashima



Auditor (Outside)
Fumio Nishimura

Executive Officers



Executive Vice President, Chief Financial Officer
Kohei Ohgaki



Executive Vice President, Chief Information Officer
Hiroshi Usami



Vice President
Mitsuyuki Masubuchi



Vice President
Atsushi Obinata



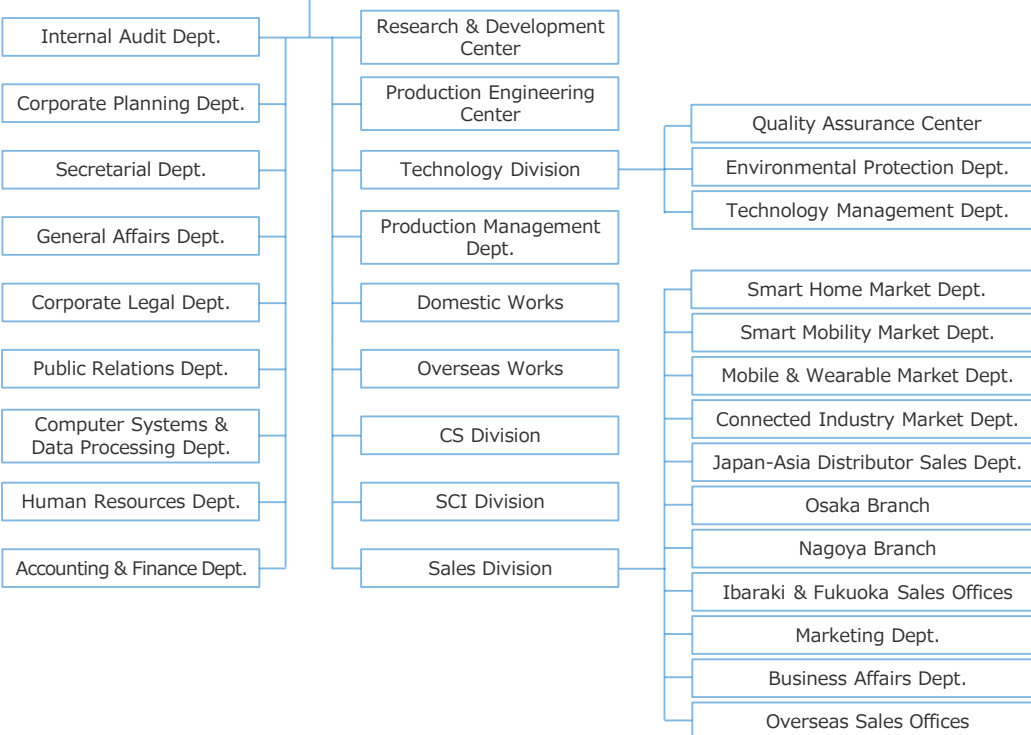
Vice President
Fumikazu Hata



Vice President
Mikio Otsubo



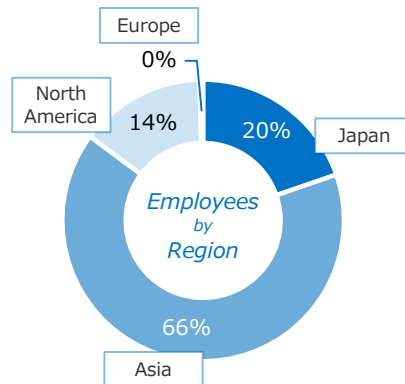
Vice President
Hideo Sugano



Global Network

39 bases in **16** countries/
areas

29 sales offices 9 works 9 R&D locations



Employees (Consolidated)

4,963

Average Years of Employment
(limited to SMK Corporation)

20.9 years



Patents Held

400

CO₂ Emissions vs FY2011

14 % DOWN

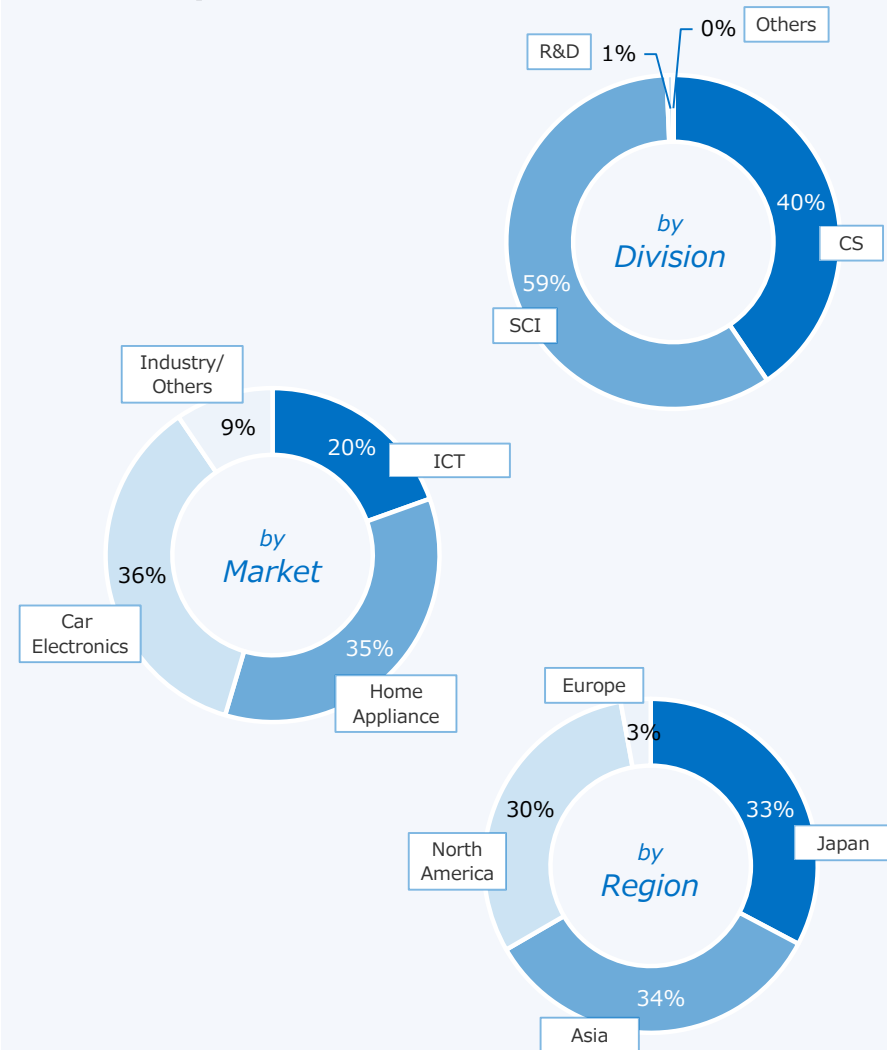


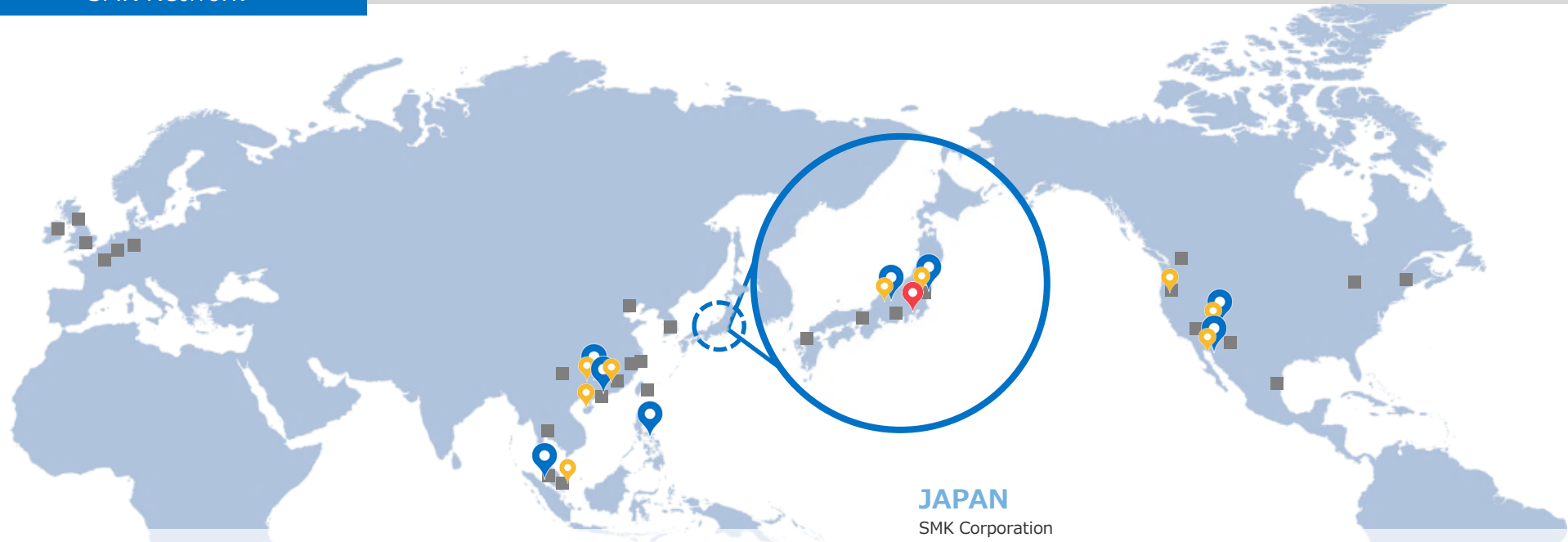
Ratio of Outside Auditors

100 %

FY2021 Net Sales (Consolidated)

48,243 million yen





EUROPE

SMK Electronics (Europe) Limited Dublin H.Q.
 SMK Electronics (Europe) Limited U.K. Branch
 SMK Electronics (Europe) Limited U.K. South Office
 SMK Electronics (Europe) Limited France Office
 SMK Electronics (Europe) Limited Dusseldorf Branch
 SMK Electronics (Europe) Limited Belgium Office

ASEAN

SMK Electronics Singapore Pte. Ltd.
 SMK Electronics Singapore Pte. Ltd. Design Center
 SMK Electronics Singapore Pte. Ltd.
 Thailand Representative Office
 SMK Electronics (Malaysia) Sdn. Bhd.
 SMK Electronics (Phils.) Corporation

ASIA

SMK High-Tech Taiwan Trading Co., Ltd.
 SMK Electronics (H.K.) Ltd.
 SMK Trading (H.K.) Ltd.
 SMK Electronics (Dongguan) Co., Ltd.
 SMK Electronics (Shenzhen) Co., Ltd.
 SMK Electronics Trading (Shenzhen) Co., Ltd.
 SMK Electronics Trading (Shenzhen) Co., Ltd. Chongqing SOHO
 SMK Electronics Technology Development (Shenzhen) Co., Ltd.
 SMK Electronics Trading (Shanghai) Co., Ltd.
 SMK Electronics Int'l. Trading (Shanghai) Co., Ltd.
 SMK Electronics Int'l. Trading (Shanghai) Co., Ltd. Beijing Office
 SMK Korea Co., Ltd.

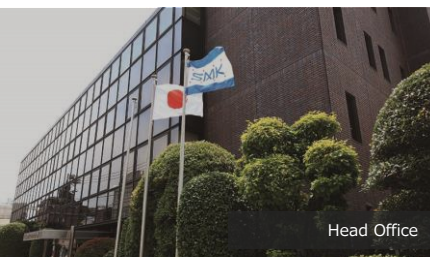
JAPAN

SMK Corporation
 Head Office
 Osaka Branch
 Nagoya Branch
 Ibaraki Sales Office
 Fukuoka Sales Office
 Toyama Works
 Hitachi Works

■ Sales Office 📍 Works 📍 R&D Locations

AMERICA

SMK Electronics Corporation, U.S.A., San Diego H.Q.
 SMK Electronics Corporation, U.S.A., San Jose Office
 SMK Electronics Corporation, U.S.A., New York Office
 SMK Electronics Corporation, U.S.A., Seattle Office
 SMK Electronics Corporation, U.S.A., Detroit Office
 SMK Manufacturing, Inc.
 SMK Electronica S. A. de C.V.
 SMK Mexicana, S. de R. L. de C. V. Tijuana Office
 SMK Mexicana, S. de R. L. de C. V. Mexico City Office



Head Office



SMK Electronics
(Phils.) Corporation



SMK Electronics
(Dongguan) Co., Ltd.



SMK Electronica
S.A. de C.V.



SMK Electronics
(Shenzhen) Co., Ltd.

Japan

Head Office ■ ■ ■
5-5, Togoshi 6-chome, Shinagawa-ku,
Tokyo 142-8511, Japan
Phone: +81-3-3785-1111
Fax: +81-3-3785-1068

Osaka Branch ■
3-11, Shimizu 4-chome, Asahi-ku,
Osaka-shi, Osaka 535-0021, Japan
Phone: +81-6-6953-7222
Fax: +81-6-6953-7221

Nagoya Branch ■
6F, KS Building, 19-13 Noritake 1-chome,
Nakamura-ku, Nagoya-shi, Aichi 453-0014, Japan
Phone: +81-52-453-3011
Fax: +81-52-453-3015

Ibaraki Sales Office ■
20-9 Ishi, Juo-cho, Hitachi-shi,
Ibaraki 319-1301, Japan
Phone: +81-294-20-2144
Fax: +81-294-20-2145

Fukuoka Sales Office ■
6F, Yaoji Building, 25-24, Hakataekimae 3-chome,
Hakata-ku, Fukuoka-shi, Fukuoka 812-0011, Japan
Phone: +81-92-472-7236
Fax: +81-92-475-6943

Toyama Works ■ ■ ■
1-1, Yasuuchi, Yatsuo-machi, Toyama-shi,
Toyama 939-2366, Japan
Phone: +81-76-455-1212
Fax: +81-76-455-1759

Hitachi Works ■ ■ ■
20-9 Ishi, Juo-cho, Hitachi-shi,
Ibaraki 319-1301, Japan
Phone: +81-294-20-2111
Fax: +81-294-20-2135

Asia

SMK High-Tech Taiwan Trading Co., Ltd. ■
12F-2, No.87, Sung Chiang Road, Zhongshan District,
Taipei, 104-86, TAIWAN
Phone: +886-2-2518-3650
Fax: +886-2-2518-4815

SMK Electronics (H.K.) Ltd. ■
SMK Trading (H.K.) Ltd. ■
Unit E, 9/F, No. 15 Wang Chiu Road, Kowloon Bay,
Kowloon, HONG KONG
Phone: +852-2795-4451
Fax: +852-2795-4434

SMK Electronics (Dongguan) Co., Ltd. ■ ■ ■
Second East Turning, Zhenxing Road, Gaobu Town,
Dongguan, Guangdong, 523289, CHINA
Phone: +86-769-8887-3451~3
Fax: +86-769-8887-3450

SMK Electronics (Shenzhen) Co., Ltd. ■
Section 5, Bldg. 23, Baiwangxin Industrial Area,
Songbai Road, Xili Street, Nanshan District, Shenzhen,
Guangdong, 518108, CHINA
Phone: +86-755-8600-0999
Fax: +86-755-8600-1969

SMK Electronics Trading (Shenzhen) Co., Ltd. ■
9th Floor Room F, Tairan Jinsong Building,
26 Tairan 4 Road, Futian District, Shenzhen, Guangdong,
518040, CHINA
Phone: +86-755-8304-0990
Fax: +86-755-8304-0880

SMK Electronics Trading (Shenzhen) Co., Ltd.
Chongqing SOHO ■
Room 14-1, Unit 1 building 10, Guobin Town hilltop Road,
No.18 xingai Avenue, Yubei District, Chongqing, 401147,
CHINA
Phone: +86-186-2364-0714

SMK Electronics Technology Development (Shenzhen) Co., Ltd. ■
New Jianxing Block A 901, Jianxing Science & Technology
Building, ShaHe West Road, Nanshan District, Shenzhen,
Guangdong, 518055, CHINA
Phone: +86-755-8600-7997
Fax: +86-755-8600-7997

SMK Electronics Trading (Shanghai) Co., Ltd. ■
Room C706A, Orient International Plaza No.85
Lou Shan Guan Road, Shanghai, 200336, CHINA
Phone: +86-21-6278-5600
Fax: +86-21-6278-5601

SMK Electronics Int'l. Trading (Shanghai) Co., Ltd. ■
Room C707, Orient International Plaza No.85
Lou Shan Guan Road, Shanghai, 200336, CHINA
Phone: +86-21-6278-5600
Fax: +86-21-6278-5601

SMK Electronics Int'l. Trading (Shanghai) Co., Ltd.
Beijing Office ■
Room 1209, Block B, Lucky Tower, No.3,
Dongsanhuan Beilu, Chaoyang District, Beijing, 100027,
CHINA
Phone: +86-10-6461-4001
Fax: +86-10-6461-8848

SMK Electronics Singapore Pte. Ltd. ■
12 Tannery Road HB Center I #04-02
SINGAPORE 347722
Phone: +65-6745-0951~2
Fax: +65-6746-7838

SMK Electronics Singapore Pte. Ltd. Design Center ■
12 Tannery Road HB Center I #01-03&04
SINGAPORE 347722
Phone: +65-6747-6282

SMK Electronics Singapore Pte. Ltd. Thailand Representative Office ■
2 Jasmine City Building, 17th Floor, Soi Sukhumvit
23 (Prasarn Mit) Sukhumvit Road, Klongtoey Nue,
Wattana, Bangkok, 10110, THAILAND
Phone: +66-2-204-5142
Fax: +66-2-204-5155

Sales Office ■ Works ■ R&D Locations ■

America

SMK Electronics Corporation, U.S.A. San Diego H.Q. ■
1055 Tierra Del Rey
Chula Vista, California 91910 U.S.A.
Phone: +1-619-216-6400
Fax: +1-619-216-6499

SMK Electronics Corporation, U.S.A. San Jose Office ■ ■
2077 Gateway Place, Suite 100
San Jose, California 95110 U.S.A.
Phone: +1-408-436-2206
Fax: +1-408-436-8081

SMK Electronics Corporation, U.S.A. New York Office ■
399 Knollwood Road, Suite #103
White Plains, New York 10603-1900 U.S.A.
Phone: +1-914-328-9150
Fax: +1-914-328-9552

SMK Electronics Corporation, U.S.A. Seattle Office ■
16625 Redmond Way, Suite M PMB 346
Redmond, Washington 98052 U.S.A.
Phone: +1-425-961-0018
Fax: +1-425-484-6275

SMK Electronics Corporation, U.S.A. Detroit Office ■
39209 Six Mile Road
Livonia, Michigan 48152 U.S.A.
Phone: +1-734-452-0545
Fax: +1-734-293-4234

SMK Manufacturing, Inc. ■ ■ ■
1055 Tierra Del Rey
Chula Vista, California 91910 U.S.A.
Phone: +1-619-216-6400
Fax: +1-619-216-6498

SMK Electronica S.A. de C.V. ■ ■ ■
Calle Aguila Azteca No.19308,
Nave No.B Planta 2, Col. Bajamaq El Aguila,
Tijuana B.C., C.P. 22215, MEXICO
Phone: +52-664-625-9680
Fax: +52-664-625-9681

SMK Mexicana S.R.L. de C.V. Tijuana Office ■
Calle Aguila Azteca No.19308, Nave No.B Planta 2, Col.
Bajamaq El Aguila, Tijuana B.C., C.P. 22215, MEXICO
Phone: +52-664-625-9680
Fax: +52-664-625-9681

SMK Mexicana S.R.L. de C.V. Mexico City Office ■
Alfonso Nápoles Gandara 50, 4th Floor
Col. Peña Blanca Santa Fe,
Mexico City 1210, MEXICO
Phone: +52-55-9171-1830
Fax: +52-55-5004-4474

Europe

SMK Electronics (Europe) Limited, Dublin H.Q. ■
203, Digital Office Centre, Balheary Demesne,
Balheary Road, Swords, Co Dublin, IRELAND
Phone: +353-1-253-0530
Fax: +353-1-686-4900

SMK Electronics (Europe) Limited, U.K. Branch ■
Unit 6, Parsons Court, Welbury Way,
Aycliffe Business Park, Newton Aycliffe,
County Durham, DL5 6ZE, U.K.
Phone: +44-1325-300-770

SMK Electronics (Europe) Limited, U.K. South Office ■
Brynglas House, Bryn Road, Coed-y-Mwstwr,
Coychurch, Bridgend, Mid Glamorgan, CF35 6AE, U.K.
Phone: +44-1656-339-174

SMK Electronics (Europe) Limited, France Office ■
35 rue d'Avron,
94170 Le Perreux sur Marne, FRANCE
Phone: +33-950-93-96-29
Fax: +33-955-93-96-29

SMK Electronics (Europe) Limited, Dusseldorf Branch ■
Berliner Allee 67
40212 Dusseldorf, GERMANY
Phone: +49-211-159-63-122

SMK Electronics (Europe) Limited, Belgium Office ■
Vijfstraten 60
3140 Keerbergen, BELGIUM
Phone: +32-49-550-0599



1929

Company reorganized and renamed Showa Musen Kogyo Kabushiki Kaisha.



Part assembly scene in the 1950s



1973

Terutaka Ikeda inaugurated as President and COO.

1978

Listed on the first section of the Tokyo Stock Exchange.

1985

Changed the company name to SMK Corporation.
First SMK technology exposition held.



2012

Yasumitsu Ikeda inaugurated as President and COO.



2016

Fortieth Anniversary of Showa Ikeda Memorial Foundation.



2022

Transition to Tokyo Stock Exchange Prime Market.



1925

The late Heishiro Ikeda established Ikeda Musen Denki Seisakujo.

1937

Olympic 680 model receiver was awarded a prize at the first competitive exhibition held by the Japan Radio Association.



1976

Showa Ikeda Memorial Foundation established.



1984

Completed construction of the current Head Office building.



2002

Tetsuya Nakamura inaugurated as President and COO.

2015

Ninetyth Anniversary. Ninth SMK technology exposition, "SMK TEXPO 2015" held.



2021

First disclosure of the Medium-Term Business Plan.



The power transformers we produced in 1929, when Showa Musen Kogyo Co., Ltd. was founded, were trademarked as "Olympic." "Link the world wirelessly. Foster a company rich in the youth and vitality of the Olympic Games, and in the future, spread our sales routes around the world." These were the ideas behind this trademark. In 1932 we opened our Head Office Factory, and started producing radio receiving equipment for general consumers.

Then in 1937 our "Olympic 680" model dynamic 4-sphere receiver took a prize for excellence at the First Radio Competitive Exhibition, held by the Japan Radio Association, beating out 107 other exhibited devices for the prize. This amazing result was just five years after we started out making receivers. The photo shows this same model, currently housed at SMK.



CREATIVE CONNECTIVITY

—Challenge, Creativity, Solutions

* The Bluetooth® word mark and logos are registered trademarks owned by Bluetooth SIG, Inc. and any use of such marks by SMK Corporation is under license.

* USB Type-C® is a registered trademark of USB Implementers Forum.

* Milweb™ is a trademark of SMK corporation.

* Other products and company names listed in this booklet are the registered trademarks or trademarks of their respective holders.

Published in August 2022

<https://www.smk.co.jp/>

