



QUALITY COMPETITIVENESS INNOVATION



COMPANY PRESENTATION

Content

About Company

1. History
2. Location
3. Costumers

02/ Technology & Manufacturing capabilities

4. EPP
5. Tools and Production Capacity

03/ Products & services

6. Products
7. Services

04/ Acknowledgments & Awards

8. Certificates & awards
9. Quality

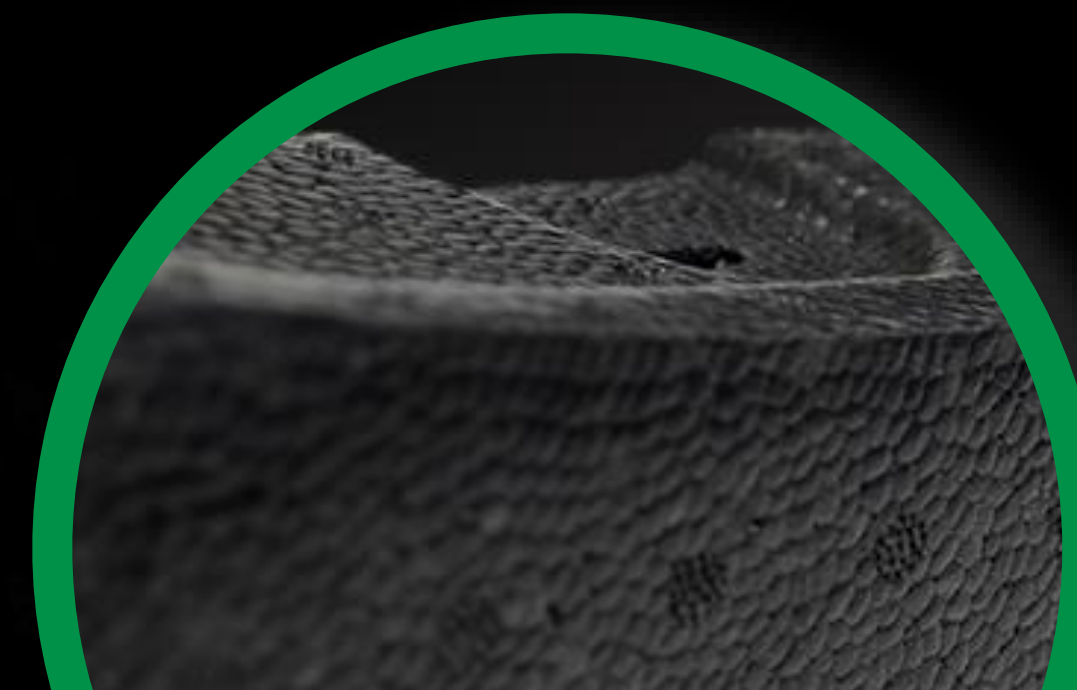
05/ Contact

01 *About the Company*

A brief description of our history, our location and collaborations

HISTORY




- Founded in 1968, Artifibras begins producing coconut fiber products for the automotive industry.
- We supplied coconut fiber products from 1968 to 2004 to the automotive industry and to the agricultural market.
- In 1997 begins the EPP molding process.
- In 2012 the coconut fiber process ends, to make way for a growing EPP products demand.
- The Company has 143 employees, and a total Surface of 13,200 m².



LOCATION

Artifibras is located in Uruapan, Michoacán..

- 411 Km from Mexico City
- 300 Km from Guadalajara
- 420 Km from Aguascalientes
- 440 Km from San Luis Potosí
- 550 Km from Puebla

-  Uruapan
-  Lázaro Cardenas Port
-  Nuevo Laredo (USA border)

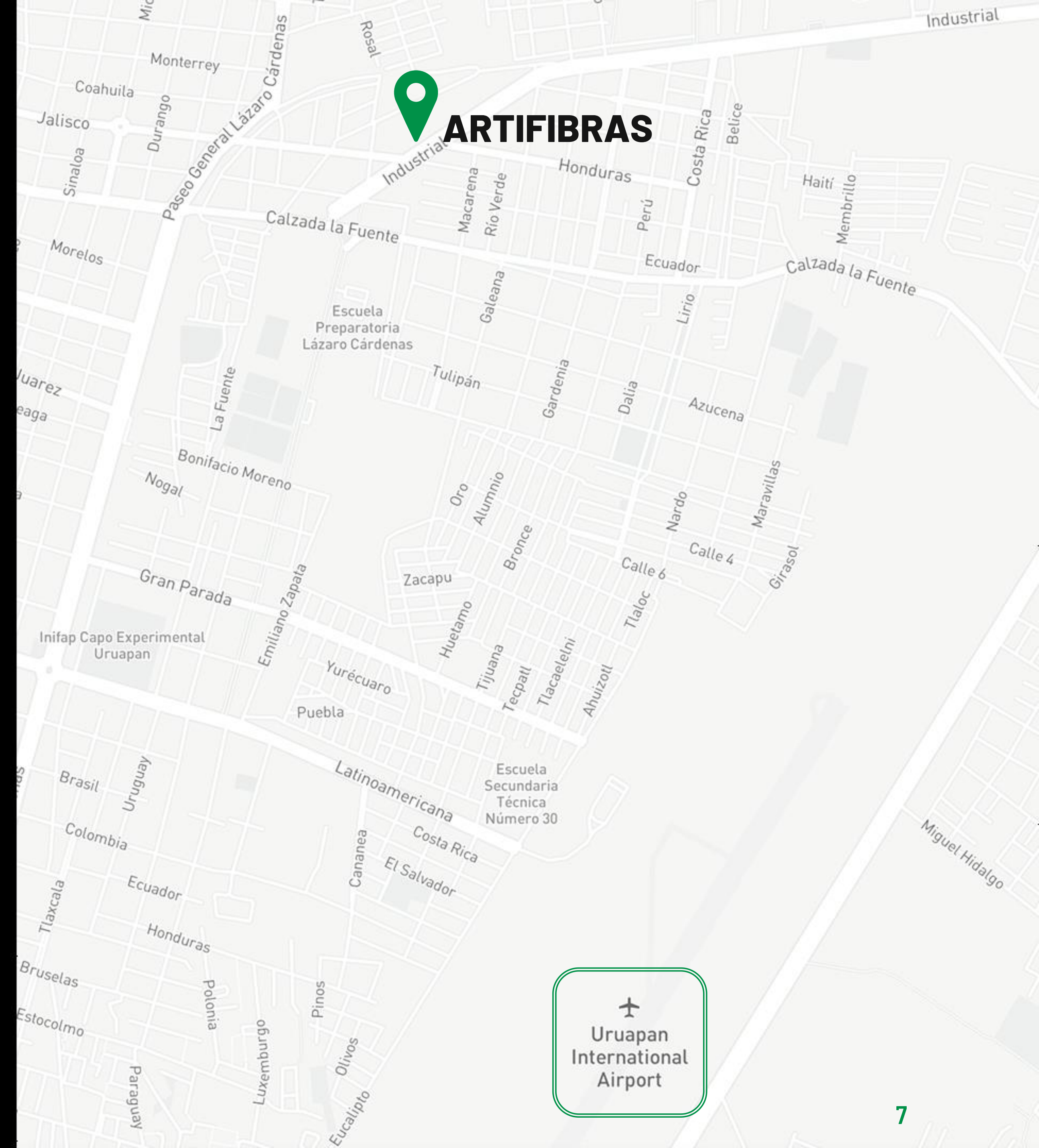
Artifibras

- Quality
- Development
- Central Laboratory
- Prototyping
- Production

01 ABOUT THE COMPANY

LOCATION

Artifibras is 10 minutes from Uruapan International Airport



CUSTOMERS

- **NISSAN** _____ 81% de production
 - Tier 1 93%
 - Tier 2 6%
 - Infinity 1%
- **Audi** _____ 9% of production
 - Tier 2
- **Tesla** _____ 6% of production
 - Tier 2
- **Grupo Volkswagen** __ 3% de production
- (Over 49 years providing high quality parts)
 - Tier 1 33%
 - Tier 2 67%
- **MAZDA** _____ 1%
- **OTHERS** _____
 - Stellantis/Tier 2 (SOP 2023)
 - Ford/Tier2



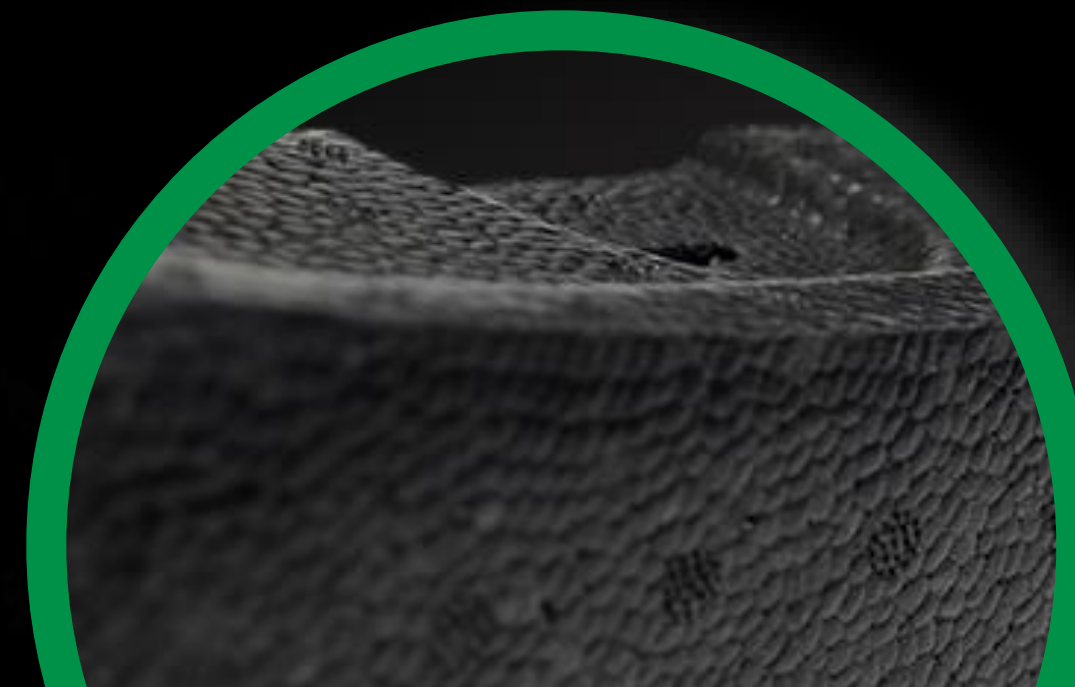
02 *Tech & manufacturing*

Our production capabilities and know-how.

EXPANDED POLYPROPYLENE EPP

Expanded polypropylene is a plastic foam material that is mainly used as an impact absorbent its properties are:

- Energy absorption (impact).
- It can absorb multiple impacts without deforming
- Lightweight, with high structural strength It
- Has thermal and acoustic insulation properties.
- Resilience (mechanical memory).
- Recyclable.
- Resistance to chemicals.
- Low density.



In ecological terms, PPE does not contain elements harmful to the environment and can be reusable and recyclable when its life cycle ends, in Artifibras we can receive the discarded material!

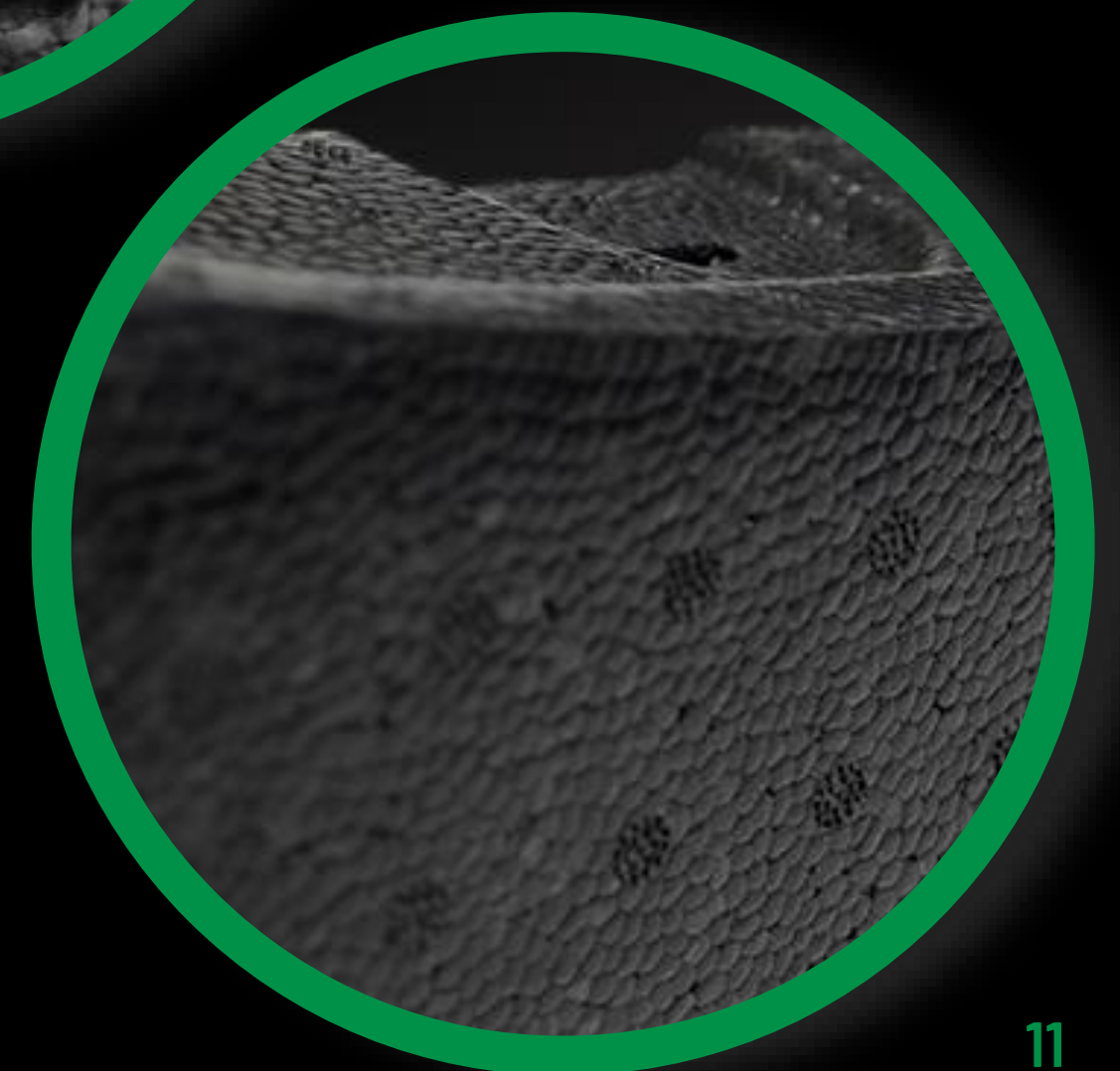
02 TECH & MANUFACTURING

EXPANDED POLYPROPYLENE EPP

Meets the following automotive tests:

- Flamability Testing
- Insertion / Retention
- Bulk Density Determination
- Restricted substances
- Determination of tension-deformation compression
- Vibration
- Chemical substances resistance
- Compression tests
- Thermal cycle tests
- Energy dynamic compression testing.
- Water collition

□ Note: Adaptable according to customer requirements.



MOULDS AND PRODUCTION CAPACITY



KURTZ

- 2 T-Line L
- 1 T-Line M



KURTZ

- 1 Rotofoamer Machine
- 600 HP air compressor
- 700 HP boiler
- 2 cooling towers
- 1 Two-chamber furnace



TEUBERT

- 2 T2x1000
- 3 U85

03 *products & services*

PRODUCTS

AUTOMOTIVE

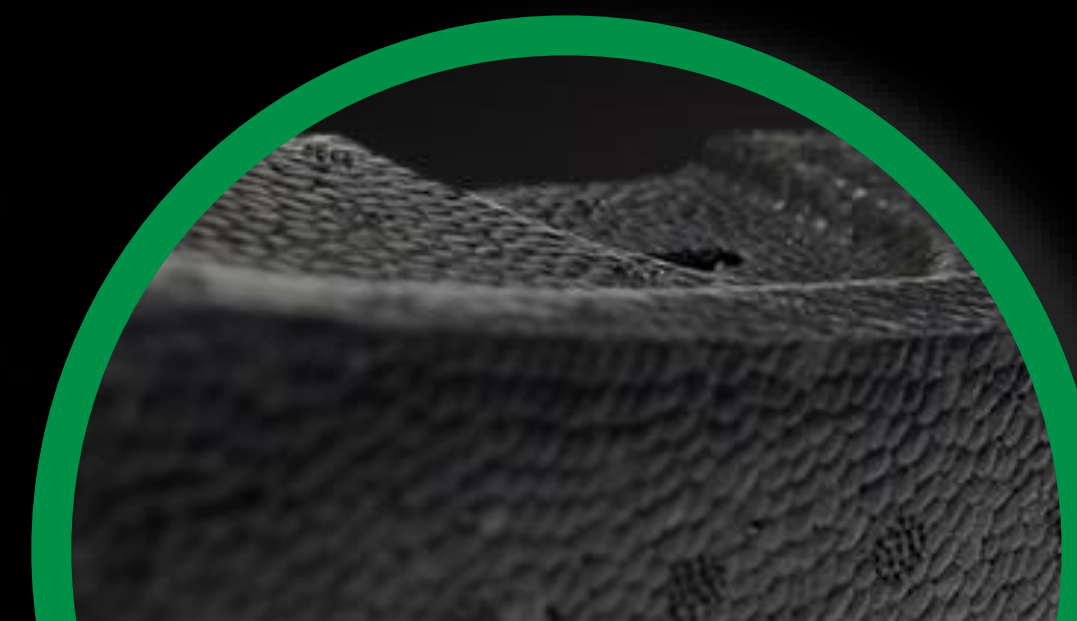
- Tool Kit
- Front/Rear Bumpers
- Energy Absorbers
- Shock Pads
- Upper/Lower Frontal Support
- Door Pads
- Left/Right Rear Bracket
- Spacers
- Head Impact Elements
- Insulating
- Sunvisors

DUNNAGE

- Blocks
- For metal packaging
- For plastic packaging
- Antiestatic packaging
- Fire retardant packaging

ROTOFOAMER TOOLINGS

- Sunvisor (In development)
- Seats (In development)
- Door Panel (In development)



AUTOMOTIVE PRODUCTS

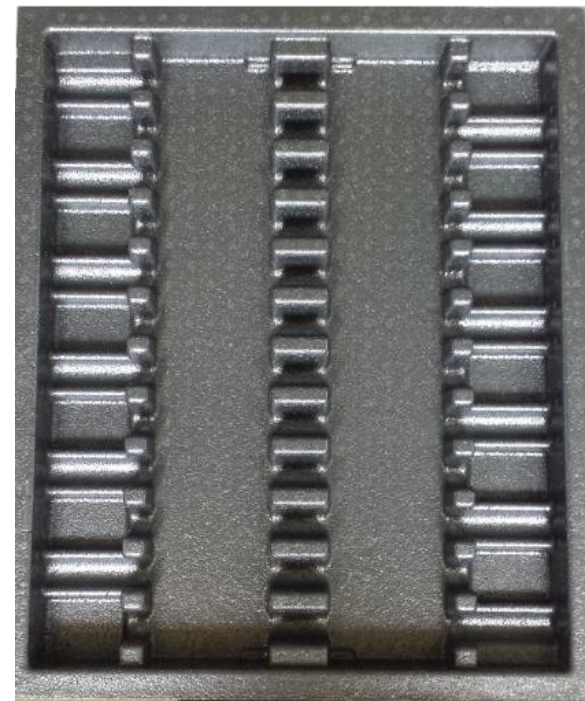


ROTO FOAMER PRODUCTS

Development with metal and plastic components



DUNNAGE AND PACKAGING



www.epp-forum.com/

SERVICES

- 3D Scanning T-Scan CS
- Design capabilities:
- 2D drawings/3D modeling (CATIA, NX)
- KVS Link and Teamcenter (G2B/TCP3).
- Internal and External Prototyping.



04 *Acknowledgment & awards*

04 ACKNOWLEDGMENT & AWARDS

CERTIFICATES



ISO 14001:2015 (SINCE 2016)



PASST 3RD LEVEL (SELF-MANAGEMENT PROGRAM IN HEALTH AND SAFETY AT WORK) (SINCE 2012)

ACKNOWLEDGMENT & AWARDS



2004 VOLKSWAGEN BEST SUPPLIER AWARD



2011 VOLKSWAGEN BEST SUPPLIER AWARD

ACKNOWLEDGMENT & AWARDS



2018 NISSAN BEST SUPPLIER AWARD



2019 KASAI QUALITY ASSURANCE

04 ACKNOWLEDGMENT & AWARDS

QUALITY

- Customer qualification average of 2022.
- Nissan: Quality: 100%
Logistics: 100%
- AUDI: Quality: 100%
Logistics: 100%
- TESLA: Quality: 100%
Logistics: 100%



Nissan Mexicana Planta A2

Aguascalientes, Ags. a Tuesday, June 07, 2022

Team ARTIFIBRAS:

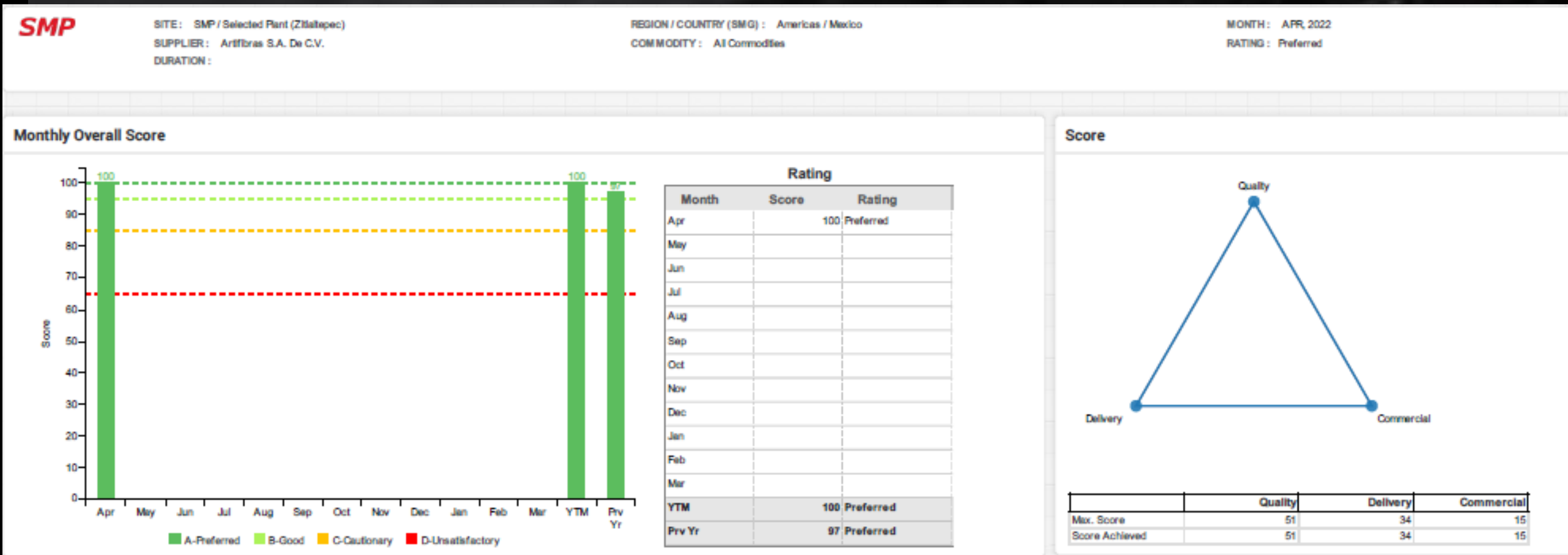
Es nuestro placer informarle sobre el desempeño del envío de materiales del mes de MAYO, en el cual, basado en el monitoreo constante de los requerimientos diarios y el estricto seguimiento por parte de ustedes obtuvieron un resultado de 100%. Dicha evaluación los califica como proveedor con riesgo 1.00 de afectar nuestra línea de producción..

No nos queda más que felicitarlos y exortarlos a que sigan trabajando hacia la mejora continua, tal como Nissan Mexicana lo exige.

Su valor promedio del SERVICE RATE durante el año fiscal es el siguiente:

PROVEEDOR	MAYO	PROMEDIO FY22
ARTIFIBRAS	100.0%	100.0%

Atentamente,
Departamento de Control de Producción,
Control de Inventarios.



04 ACKNOWLEDGMENT & AWARDS

QUALITY

Automotive customer PPM's

- Nissan: 0 PPM
- SMP: 0 PPM
- SMP: 0 PPM
- A&P Solutions : 0 PPM
- Kasai: 0 PPM
- Nitco: 0 PPM



NISSAN

MOTOR CORPORATION

NISSAN NORTH AMERICA

www.nissan-usa.com

Ver. FY22

Supplier name: ARTIFIBRAS SA DE CV

Supplier code: 2K66

Business Unit: AXLES & STAMPING

1-Jun-22

FY22 Apr SSC

NNA&NMEX Regional Supplier Score Card

1. Total score (rolling 12 months); May 2021 - April 2022

Total score	Level*1
100.0	L1

*1: Level is defined by the following table.

L1	Total score ≥90	L3	80 > Total score ≥60
L2	90 > Total score ≥80	L4	60 > Total score

2. Each quality index score and performance (rolling 12 months)

	Pure performance index					Target achievement index				Deduct point			
	SP-3MIS (ipm)	Supplier Ranking (pts)	PPM (ppm)	Supplier Q-Speed		Response (pts)	SP-3MIS Actual/Target	Supplier Ranking Actual/Target	PPM Actual/Target	Supplier Q-Speed (# of NG/Total)	R/S (# of issues)	Production Preparation (# of issues)	ePPM (ppm)
				[R&D]	[MFG]								
Performance	0.0	0.0	0.0	0.0	0.0	10.0	0.0 / 3	0.0 / 3	0.0 / 1.6	0 / 0	0	0	0.0
Score	23.0	23.0	7.0	3.5	3.5	10.0	12.0	12.0	3.0	3.0	0.0	0.0	0.0
Score allocation	23	23	7	3.5	3.5	10	12	12	3	3	(minus)	(minus)	(minus)



Scorecard Breakdown:

Quality Performances

- Parts Per Million
- Occurrences
- Communication & Responses

Results	Points	Performance	Total Points
0.00	25	😊	40
0	10	😊	
0	5	😊	

Quality Department(s) Feedback

Thank you for your attention!

Director of Engineering (Phone Ext. 105)

David Martínez

engineering@artifibras.com.mx

Commercial Manager (Phone Ext. 112)

Oscar Beltran

product@artifibras.com.mx

R+D Director (Phone Ext. 450)

Roberto C. Villegas

invydes@artifibras.com.mx

ARTIFIBRAS S.A. DE C.V.

Boulevard Industrial 445

Col. Eduardo Ruiz

Uruapan, Michoacán

60130 México

Teléfono: +52 (452) 503 3100

