



NOVA

STEEL

NORTH AMERICAN LOCATIONS

+ 11,000
employees

+ 1M Tons
handled per year

+ 23
Strategic locations



*2 x New US Locations
under Construction*

NOVA TUBE & STEEL
Delta, OH

NOVA STEEL USA
Bowling Green, KY



NOVA STEEL
Lasalle, QC (HQ)
Dorval, QC
Woodstock, ON
Stoney Creek, ON
Walker, MI



NOVA TUBE
St Patrick, QC
Baie D'Urfe, QC

CHRISCOTT LOGISTICS
Nova's Truck Fleet Operations



CRESSWELL INDUSTRIES
Granby, QC
ST Hubert, QC
Shawinigan, QC

ATELIER RF
Sherbrooke, QC



*Plant #3
Major Optimization Underway*

NOVA TUBE & COIL DE MEXICO
Ramos Arizpe, Coahuila

3 Plants

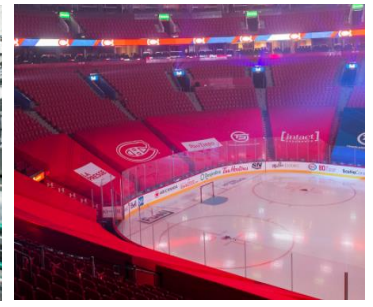
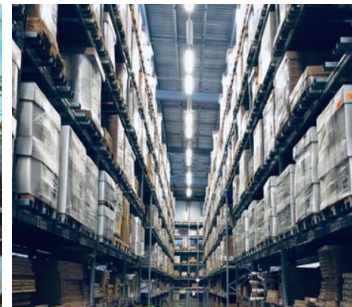


AMERICAN STEEL & ALUMINUM
Portland, ME
Syracuse, NY
Auburn, MA

Quality Flame Cutting
Fremont, NH

MARKETS & INDUSTRIES

NOVA steel fortifies a host of industries, is found supporting North America's most iconic structures and is used in the design of the top 10 selling vehicles in the US. It is processed and distributed to serve the construction & manufacturing, equipment, transportation, HVAC & energy and defense sectors.



NOVA STEEL MEXICO



Mexico Operations

Variated operating divisions, equipment, processes and skillsets allow Nova Steel to gain efficiencies while delivering quality across entire network



Tube Mill / Automotive Service Center / Flat Steel Processing

- ✓ Automotive tubular value add operations: Saw cut, laser cut, swagging, bending, chamfering & piercing operations.
- ✓ Roll formed Rail Floor manufacturing, welding, painting & assembly
- ✓ ISO & IATF Certified

> 500,000 Sq. Ft. Production Capacity Across 3 Plants

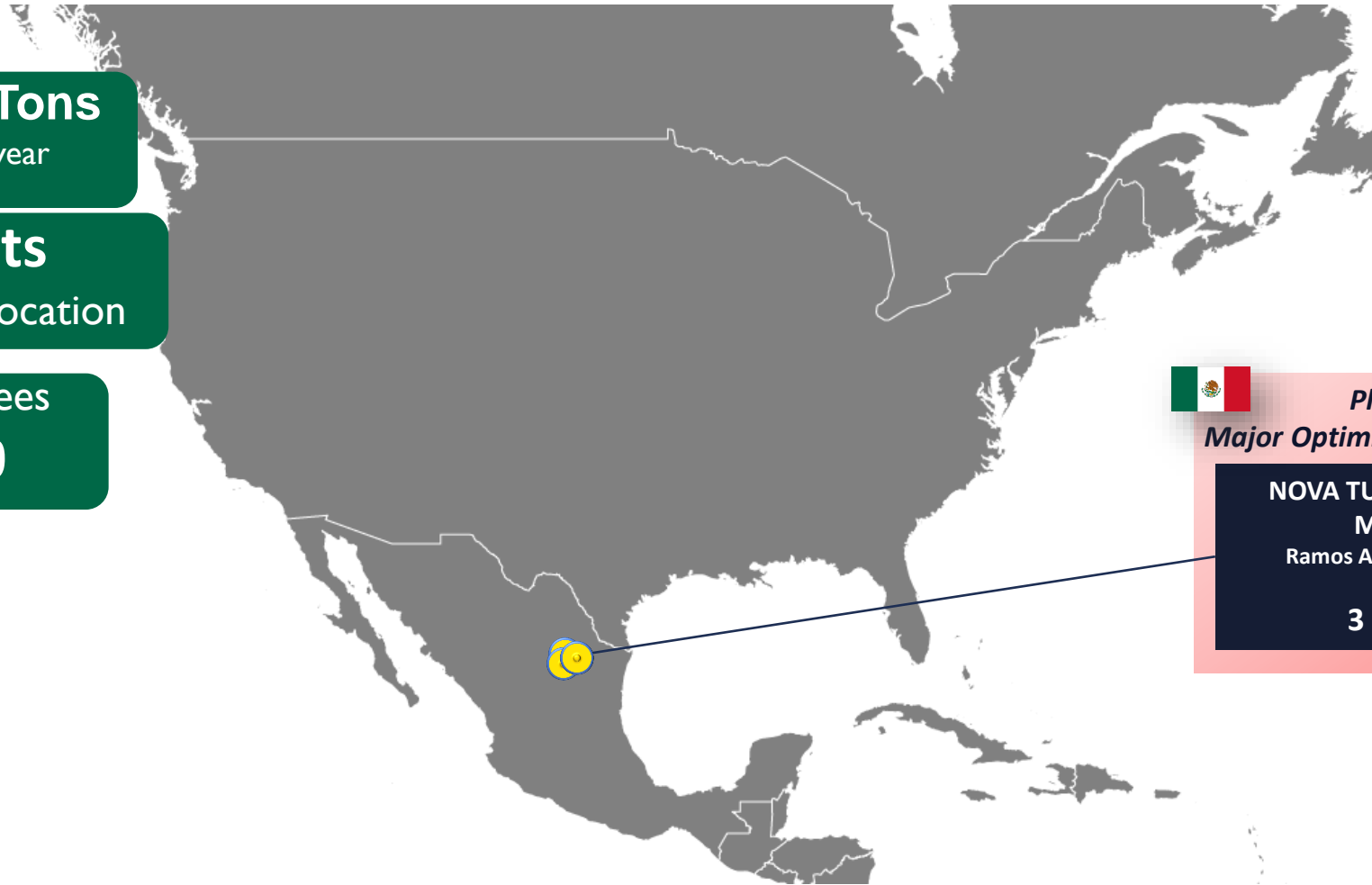
- ✓ ERW Automotive Tubing
- ✓ Benefit from diverse supply chain options
- ✓ Available capacity for customized solutions built to client specific requirements

MEXICO LOCATIONS

+ 150K Tons
handled per year

3 Plants
Strategic location

employees
+ 350



Plant #3
Major Optimization Underway

**NOVA TUBE & COIL DE
MEXICO**
Ramos Arizpe, Coahuila

3 Plants

MEXICO LOCATIONS



Service Center & Rollforming Lines

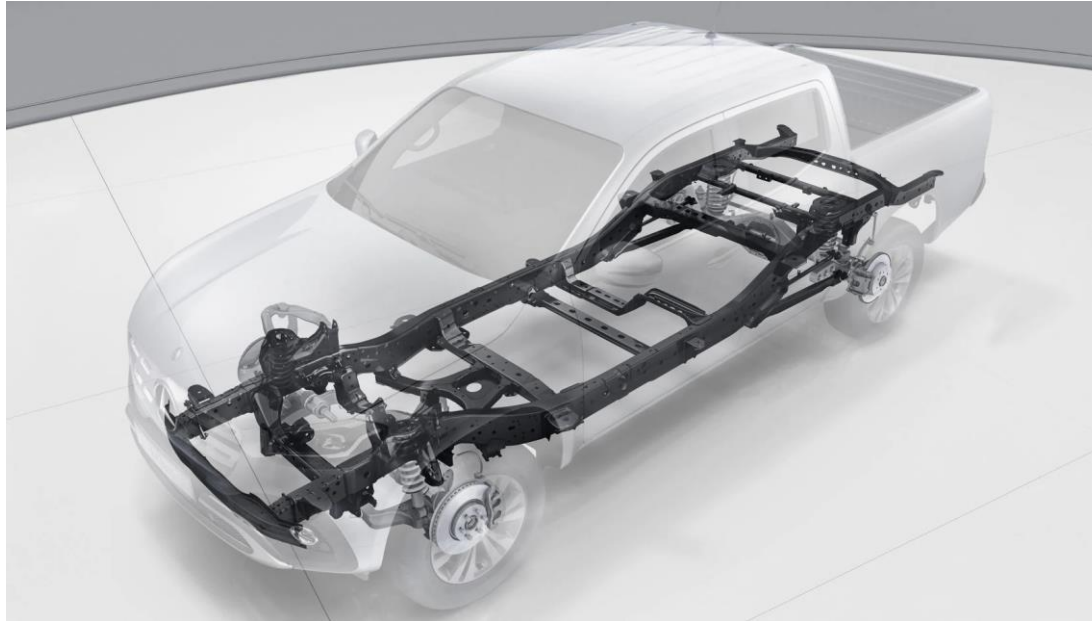


New Business Opportunities

- Nova Steel continue growth and committed to increase the range of opportunities adding new equipments & value added process to our core business.

Tube Mill & Rollforming	Tube Value Added
<ul style="list-style-type: none">✓ Current Tube Mill: O.D. 2.0 - 6.5 in Max Wall: < ¼ in✓ <u>New Tube Mill:</u> O.D.: ¾ - 3.5 in Max Wall: < ¼ in✓ Rollforming open and welded profiles	<ul style="list-style-type: none">✓ Saw Cut & Chamfering✓ Laser Cutting Equipment✓ Bending✓ Swagging✓ End Forming✓ Punching

Automotive Tube & Value Add Products



Weil Tech (Laser Welding Tube) & Industrial



Service Center & Industrial Apps

- As Nova Steel Mexico has become in a strong supplier to automotive industry in Mexico & USA; New strategy is focus to develop and growth “Industrial Business”.

Master - Coils	Flat Steel Value Added
<ul style="list-style-type: none"> ✓ Stocking 40,000 MT ✓ Slitter Process Up to 60 in - Width Up to .375 in - TH 0.005 in - Max Tol 	<ul style="list-style-type: none"> ✓ Laser Cutting Equipment ✓ Bending (Press Break) ✓ Swagging / Punching ✓ Roll Forming ✓ Mig Welding ✓ Dipping wet Paint



Expansion – México NEW PLANT on today!!!



Contact



Ricardo Pérez Alcocer

Sr. Sales Manager & Business Development
Automotive Tube & Value Add Products

mobile +52(442) 592-4177

office +52(844) 866-0360

ricardo.perez@novasteel.ca



Leonardo Hernández Posadas

Sr. KAM
Automotive Tube & Value Add Products

mobile +52(844) 362-1112

office +52(844) 866-0360

leonardo.hernandez@novasteel.ca

www.novasteel.ca