



COMPANY OVERVIEW

Classic Components

Your high-performance Supply Chain Solution

CLASSIC OVERVIEW

**What makes us
the best choice in
the independent
channel?**

- Nearly 40 years as a recognized market leader
- Consistently ranked among top global independents
- Private ownership - flexibility
- Growth through investment and performance
- Risk-free sourcing
- Leading edge QMS
- 16 global locations including distribution hubs in Hong Kong and USA
- Worldwide sales & procurement teams
- Critical shortage, cost reduction and asset recovery services
- Value-add services and BOM management
- Financial services



GLOBAL FOOTPRINT

**We Offer
Regional Support
with Global
Oversight**



NORTH AMERICA

Dallas, Texas
Los Angeles, California
San Jose, California
Ventura, California
Monterrey, Mexico
Guadalajara, Mexico

EUROPE

Willich, Germany
London, United Kingdom
Budapest, Hungary

SOUTH AMERICA

São Paulo, Brazil

ASIA

Hong Kong, China
Shenzhen, China
Seoul, South Korea
Penang, Malaysia
Taipei, Taiwan
Shanghai, China



LINE CARD SPECIALTY LINES

Top Brands & Component Partners

AMD
Adamtech
Amphenol
Analog Dev/ Lin Tech/ Maxim
APTIV / Delphi
Attend
AVX / Kyocera
Bel Fuse
Bourns
Broadcom / Avago / PLX
Cherry Switches
Cypress
Diodes Inc
Grayhill
Hirose
Hitachi
IDT
Infineon / Int'l Rectifier
Intel / Altera
ISSI
ITT / Cannon
Johanson
JST
Kemet
Keystone
KOA Speer
Lattice
Ledit
Littelfuse / IXYS
Lattice

Ledit
Littelfuse / IXYS
Marvell
Meanwell
Microchip / Microsemi / Atmel
Micrel
Micron
Molex
Monolithic Power Systems
Murata
Nanya
NDK
Nexperia
NIC
Nichicon
Nidec
NXP / Freescale
OnSemi
Panasonic
Pulse
Renesas / Intersil
Rohm
RoyalOhm
Samsung
Samtec
Sandisk

Sanyo
Semtech
Sharp
Shenzen Qiyue
Silicon Labs / Silabs
SK Hynix
SMK
Sony
ST Micro
Stackpole
Taiyo Yuden
TDK / Epcos
TE / Tyco / AMP
Texas Instruments
Toshiba
TRW
Vishay
Walsin / Sincera
Wurth
Xilinx
Yageo
Yazaki

LINE CARD FRANCHISED LINES

Top Brands & Component Partners

CALCHIP
Capacitors & Resistors

CAPXON
Capacitors

ELNA
Caps: Electrolytic, Film, Double-Layer

GENERAL TOUCH
Touchscreen, Touch Monitor

GK LIGHTING
LED Modules/Strip Lighting

GREENCONN
Connectors

HO CHIEN
Diodes, Connectors, Cables

KINGTRONICS
Electrolytic Caps, Diodes, Rectifiers

TXC/QST
Crystals/Oscillators
Wireless Charging, Solenoids

LEDIST OPTO
Chip LED, LED Modules

LEDTRONICS
LED Lighting (Indoor & Outdoor)

NEWHAVEN DISPLAY
TFT/LCD/OLED

ORIENT DISPLAY
TFT/LCD/Touch

PARALIGHT
LED Lighting

P-DUKE
Power Supplies

TECATE
Caps: Ceramic, Film, Polymer

TLC ELECTRONIC
PTC/NTC/Fuses





PROGRAMS & SERVICES

PROGRAMS & SERVICES

Material Cost Reduction & Lead Time Buys

- Exclusive OEM/CEM/EMS relationships
 - Leverage competitive contract pricing to drive incremental profit
 - Purchase on standard L/T for scheduled orders
 - Access to volume discounts
- Committed quality performance – Industry leading QMS practices
- Leverage Classic's financial stability for scheduled orders
- Supply & Demand data alignment managed through centralized team
- Predictable Cost Savings—Manageable, measurable and reportable quarterly P/L contribution
- Price protection
 - Classic will agree to price protection on purchases for agreed upon commodities
 - Price protection will be based on orders that ship in following Quarters where Direct or Franchise pricing levels have increased above current order price
- Flexible push-out delivery schedules and non-NCNR orders
 - Rescheduling privileges up to 60 days (or additional options considered on case-by-case basis)
 - Cancellation privileges on L/T buys where Classic has same terms with Vendor

PROGRAMS & SERVICES

Shortage Solutions

- Effective regional partnerships
- Thorough and effective supplier management processes
- Price protections through inventory bonding
- Industry leading Quality Management Systems
- No risk sourcing
- Stringent authentication processes
- Flexible terms
- Second sourcing with our authorized brands
- Dedicated Account Management team
- Aggressive sourcing

PROGRAMS & SERVICES

VMI

- Redirect capital to other spend categories as needed
- Supplement procurement requirements with tactical PPV
- Improved business revenue results and inventory turns
- Reduce Total Cost of Ownership
- Scheduling out to 12 months if required
- \$0 Carrying Costs / \$0 Restocking fees
- Cancellation and Rescheduling Privileges
 - Vendor specific — Classic will reciprocate any return privilege we can secure with our Vendors
 - If return not available — Classic will attempt to remarket material for optimal asset recovery
- Blended PPV to offset any cost overruns – PPV savings offset inflated shortages
- Tiered rebate structure based on total monthly sales
- Dedicated Account Management team

PROGRAMS & SERVICES

Financing & Logistics Solutions

- Customized to address your specific needs
- Inventory Financing
- EMS Inventory Transit Solutions
- Long-Term Scheduling
- See Supply Chain Finance Presentation for more

Last Time Buy & Obsolete Part Sourcing

- Inventory risk reduction for constrained components and medium-to-long term life-cycle products
- Supplier owned inventory stored at Classic warehouse location or on-site
- Fully insured and secure storage facilities
- Blended buys from extensive network of partners to reduce cost
- Certified QMS Processes and Policies
- Real-Time Industry Alert Monitoring
- Traceable Sourcing
- Identify Potential Cross/Substitution Opportunities

PROGRAMS & SERVICES

Excess/Surplus Mitigation

- Outright Lot Purchases
- Line-Item Purchases
- Inventory Consignment (physically and/or virtually)
- Strategic Marketing of the Materials

PROGRAMS & SERVICES

USA & Hong Kong Logistic & Quality Inspection Hubs



- State of the art Quality Inspection facilities
- Full duplication of process between Hong Kong and global HQ (LA, CA)
- Inventory bonding services
- Highly secure location for product storage
- Improved TLC (Total Landed Cost) and L/T for most customers
- Increased Asia region market penetration
- Convenient business district location for customer/partner business reviews
- Space and facilities available for ongoing Sales Team expansion



QUALITY

Process & Capabilities

QUALITY

ISO 9001 AS 9120B ANSI/ESD S20.20

ERAI Member



Certificate of Registration

This is to certify that the Quality Management System of

Classic Components Corporation
(Several Site Structure)

has been assessed for conformance with the provisions set forth by

**ISO 9001:2015
AS9120B**

Scope of Registration:

Electronic component distribution, inspection and logistics services.

Address

23605 Telo Ave.
Torrance, CA 90505
(Central Function)

Customer Purchase Order, Customer Inquiry, Supplier Inquiry,
Purchase Order & Receiving, Inspection, Shipping, and QMS
Processes.

Futura Plaza
111-113 How Ming Street,
10/F, Rm 3, 6-8 Kwun Tong
Hong Kong

Inspection and shipping.

The assessment was performed in accordance with the requirements of the latest version of AS9104 /1:2012-01
ISA is accredited under the ICOP Scheme.

Certificate No. 1565
Issue Date: 02/20/2022
Expiration Date: 02/19/2025
Certified since February 19, 2013



The conditions for maintaining this certificate of registration are set forth in
ISA's Registration Policies 5.1. This registration is granted subject to the
organization maintaining compliance to the noted standard. The validity of
this certificate is dependent upon ongoing surveillance audits.



President Farid J. J. J.

International Standards Authority, Inc.

www.isaqsistrac.com
525 Queensland Cir.
Corona, CA 92879, USA
Tel: 951-738-0035

Certificate of Registration

This is to certify that the Electrostatic Discharge
Control Program of:

Classic Components Corporation
23605 Telo Ave.
Torrance, CA 90505

has been assessed for conformance with the provisions set forth by

**ANSI/ESD
S20.20 2014**

This certificate is valid for the following product / service ranges:

Distribution, inspection, and logistics services.

The assessment was performed in accordance with the latest requirements set forth by the ESD Association.
ISA is accredited under the ESD Association guidelines for Accredited Certification Bodies.

Lead Auditor Scott Donovan

Certificate No. ESD1439-1 Date of Issuance: 01/27/2016 Recertification: 03/31/2022 Date of Expiration: 03/30/2023



Such processes or services shall be manufactured or offered at
or from, only the address given above. This registration is
granted subject to the organization maintaining compliance to
the noted standard. This certificate is not transferable and
remains the property of International Standards Authority.



President Farid J. J. J.

International Standards Authority, Inc.



www.isaqsistrac.com
525 Queensland Cir.
Corona, CA 92879, USA
Tel: 951-738-0035

Certificate of Registration

This is to certify that the Electrostatic Discharge
Control Program of:

Classic Components Corporation

Futura Plaza
111-113 How Ming Street
10/F, Rm 3, 6-8 Kwun Tong
Hong Kong

has been assessed for conformance with the provisions set forth by

**ANSI/ESD
S20.20 2014**

This certificate is valid for the following product / service ranges:

Distribution, inspection, and logistics services.

The assessment was performed in accordance with the latest requirements set forth by the ESD Association.
ISA is accredited under the ESD Association guidelines for Accredited Certification Bodies.

Lead Auditor Scott Donovan

Certificate No. ESD1439-2 Date of Issuance: 01/27/2016 Recertification: 03/31/2022 Date of Expiration: 03/30/2023



Such processes or services shall be manufactured or offered at
or from, only the address given above. This registration is
granted subject to the organization maintaining compliance to
the noted standard. This certificate is not transferable and
remains the property of International Standards Authority.



President Farid J. J. J.

International Standards Authority, Inc.



www.isaqsistrac.com
525 Queensland Cir.
Corona, CA 92879, USA
Tel: 951-738-0035



QUALITY

Quality Policy

Classic Components Corporation will provide electronic components, related products and necessary services such as product processing, inspection and testing that consistently meet or exceed the requirements and expectations of our customers. We will actively pursue continual quality improvements that increase effectiveness of our Quality Management System, products and services.

QUALITY

Global Quality Objectives

- 100 % Total Quality
- 0 DPPM
- 100 % On Time Delivery
- 100 % Customer Satisfaction
- Stronger relationships with external business partners
- Accurate and Effective communication with internal customers

QUALITY

Risk Mitigation & Counterfeit Avoidance

- Supplier Management: Screening and Selection
 - Established supplier rating system
 - Regular Audits of Supply Base
 - Performance statistics
 - USL (Unapproved Supplier Listing) – report to Membership Organizations
 - Real-time Management Review
- Traceability Documentation (Specify supply chain traceability to the OCM or after market manufacturer that identifies the name and location of all the supply chain intermediaries from the part manufacturer to the direct source of the product. If this traceability is unavailable, a risk mitigation plan is required.)
 - CoC (Certificates of Conformance) requirements
 - Verifiable Chain of Custody
 - Regularly update and maintain a comprehensive package & die pedigree photo repository DB to help identify counterfeits
- Compliance Verification
 - Visual Inspection
 - Testing
 - Physical Analysis

QUALITY

Risk Mitigation & Counterfeit Avoidance

- Traceability Control Process
 - ERP driven flow down of customer traceability requirement
 - Clear identification of supplier type within the ERP
 - Established control points to ensure compliance
- Authorized Sources
 - 100 % real-time review of supplier(s) picked through the ERP by the order approval process
 - Real-time Product Management confirmation of supplier's authorized lines
 - Documentation of supplier's current authorized lines in the ERP
 - Risk profile driven inspection and sampling to ensure the proper level of risk mitigation steps are performed while maintaining material integrity and ability to meet customer commitments
 - Procurement of materials through specialized SPB agents that perform expert analysis and front-end risk mitigation
 - Top management, including the order approval process, review of SPB transaction to verify traceability and material support
 - Real-time Product Management confirmation that all SPB criteria, including statutory requirements, have been satisfied per transaction

QUALITY

Risk Mitigation & Counterfeit Avoidance (cont.)

- Risk Profiler System based on AS6171 Risk Identification and Analysis Requirements:
 - Identification of all areas of risk and individual risk factors
 - Precise analysis of risk and accurate reflection through aggregate scoring
 - Flow down of risk information and establishment of multiple points of control
 - Processes and procedures driven by a complete risk profile score
- Consolidated Core Risk Data Points:
 - Traceability level of material
 - End customer application
 - Supplier rating and type
 - Customer classification
 - Supporting quality data (e.g., historical information, ERAI reports, etc.)
- Algorithmic Weighted Scale
 - Practical modeling of weight assigned to each consolidated risk data point to ensure total quality without sacrificing OTD
 - Determination of a comprehensive risk profile for counterfeit avoidance and mitigation processes
- Risk Profile Driven Inspection and Sampling Program
 - Business Risks – Details and requirements of the order against the final risk profile
 - Inspection Criteria – Inspection plan against the final risk profile
 - Sampling Criteria – Sampling plan against the final risk profile

QUALITY

Risk Mitigation & Counterfeit Avoidance (cont.)

- Supply Chain Management Controlling Body
- New Supplier Qualification and Approval:
 - AS registered and audited process and forms
 - Policy and procedure driven process
 - Consolidation and central management of supplier data
 - Product Management review of all data and audit results
- Supplier Management and Maintenance
 - Real-time Product Management review of transactional data
 - Criteria based management of supplier status, type and rating
 - Centralized management of supplier audits and quality metrics
- Optimized Flow Down and Distribution of Information
 - Workflow integrated flow down and distribution of supplier data including historical transactions, status, type and rating
 - Distribution and control of policies
 - Final review of complete order data prior to shipment
 - Distribution center for all critical order and material information for post-delivery support and services

INSPECTION & TEST

Incoming Inspection

- Quality Inspection Checkpoints
- External Packaging
 - Original, sealed packaging, labels, QC markings, correct colors, bar code discrepancies, lot codes, marking font and clarity of labels
- Internal Packaging
 - Bar code, logo discrepancies, dry pack, moisture barrier bags - vacuum sealed anti-static bags, desiccant, carrier originality, labels consistent with manufacturer's specs
- Product Inspection
 - Physical arrangement in packaging, pin orientation, coplanarity, cut or bent leads, BGA damage, lead blemishes, discoloration, rust, tarnish, evidence of remarking, lot codes and country of origin, discoloration, sandblasting/blacktopping evidence, surface scratches and blemishes
- Escalation – Critical Inspection
 - XRF
 - X-ray
 - Solderability Test
 - Destructive Decapsulation
 - Outsourced Partner Electrical Testing



Any discrepancy results in isolation of goods until the issue is resolved

INSPECTION & TEST

Incoming Inspection EQUIPMENT

- XRF RoHS / Pb Inspection and Verification
 - Olympus Vanta VMW with Tungsten Anode
- X-Ray Inspection (Creative Electron TruView Prime)
 - Automated Reel-to-Reel Inspection and Comparative Analysis
- Solderability Test
 - Plato SP-500TP Solder Pots
- Decapsulation - Nisene JetEtch Pro Acid Decap System
 - Air Science USA Fume Hood

QUALITY INSPECTION

External Packaging



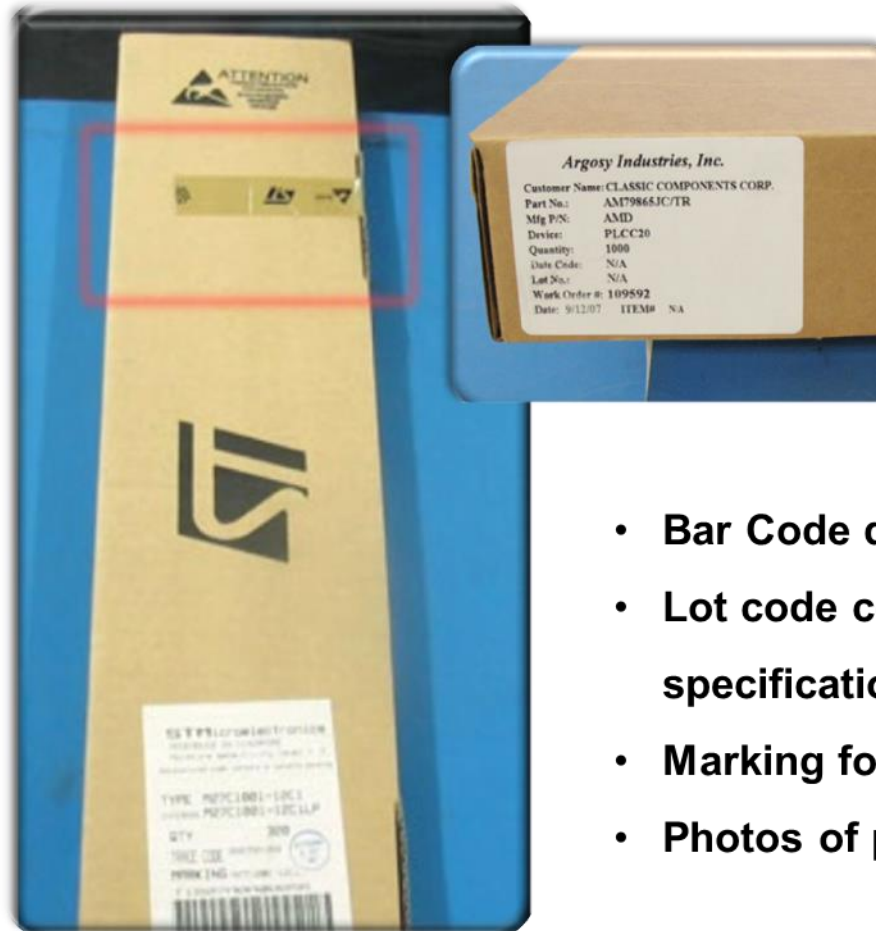
- Original, sealed packaging
- Labels, QC markings, colors correct
- Look for misspelled words



Any discrepancy results in isolation of goods until the problem is resolved.

QUALITY INSPECTION

External Packaging (cont.)

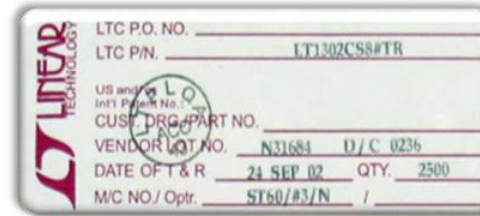


- Bar Code discrepancies
- Lot code consistent with manufacturer specifications
- Marking font & clarity of labels
- Photos of packaging documented and stored

❖ Any discrepancy results in isolation of goods until the problem is resolved.

QUALITY INSPECTION

Internal Packaging

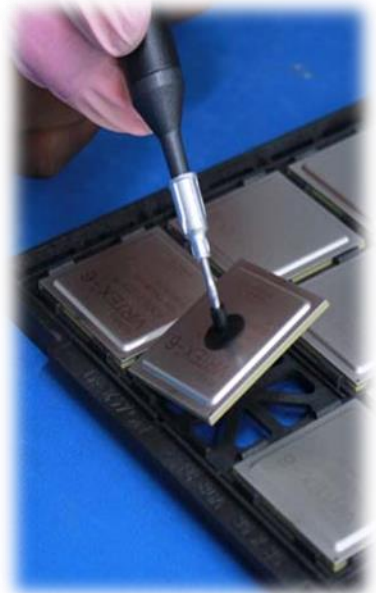


- Bar code, logo discrepancies & inconsistencies
- Dry pack, moisture barrier bags, vacuum sealed anti-static bags, desiccant
- Carrier originality
- Labels consistent with manufacturer's spec

❖ Any discrepancy results in isolation of goods until the problem is resolved.

QUALITY INSPECTION

Detailed Bench Inspection

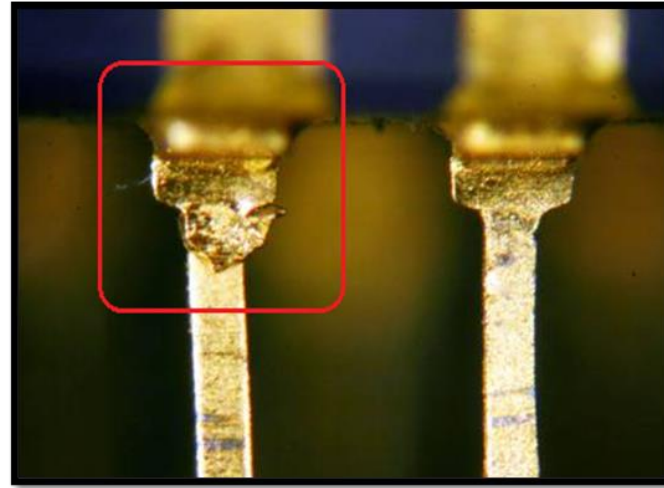


- Physical arrangement in packaging
- Pin orientation
- Photos again documented and stored

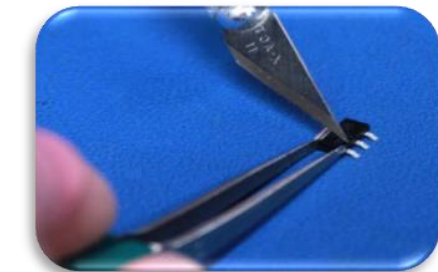
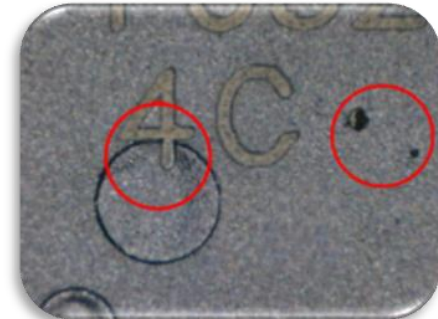
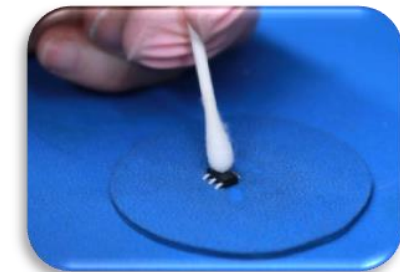
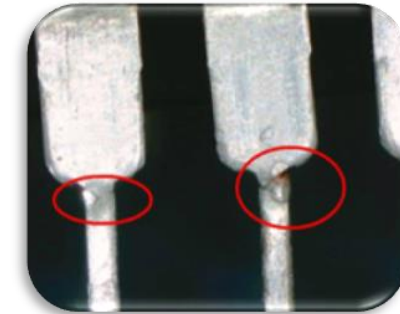
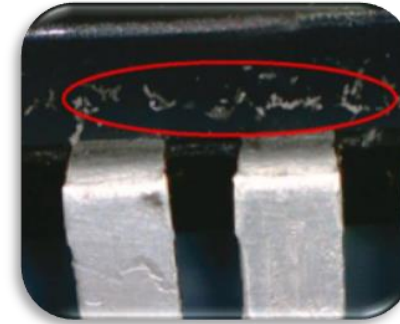
❖ Any discrepancy results in isolation of goods until the problem is resolved.

QUALITY INSPECTION

Detailed Bench Inspection (cont.)

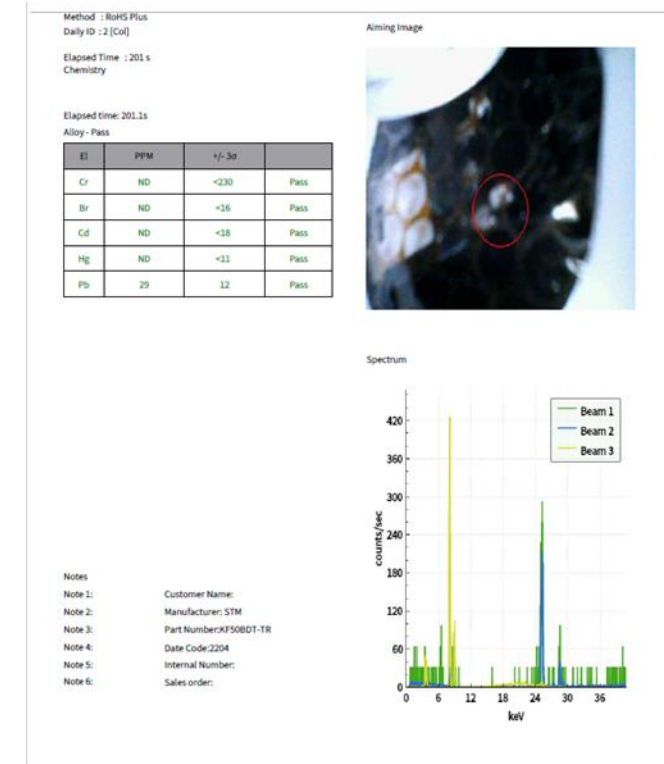


- Marking font & clarity (laser?)
- Evidence of remarking
- Discoloration & Oxidation
- Marking permanency
 - Blacktopping
 - Sandblasting
 - Scrape test
- Surface scratches & blemishes



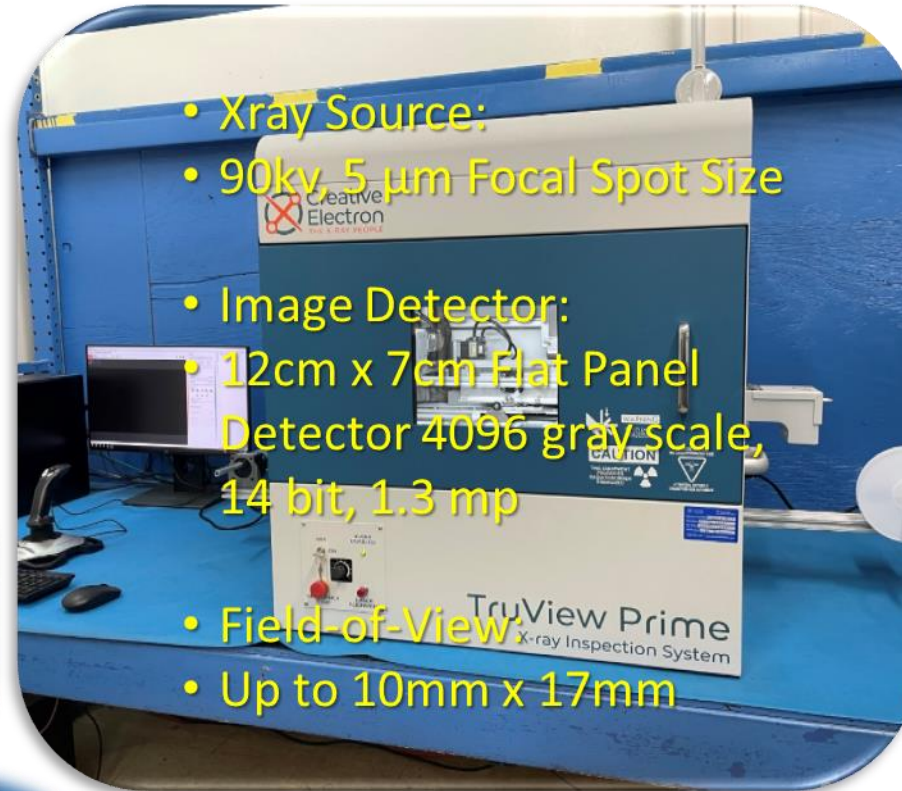
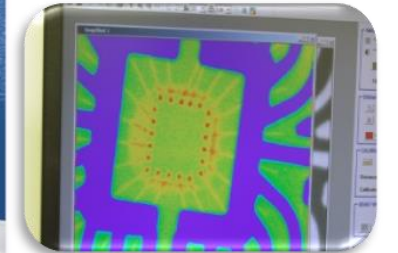
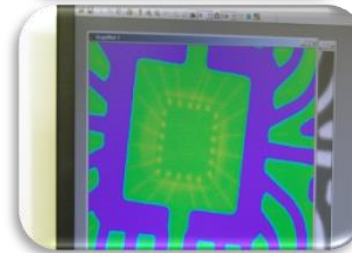
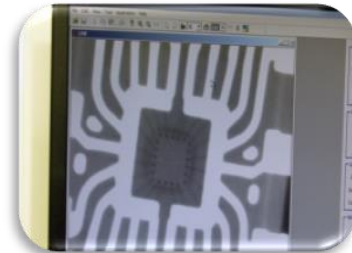
Inspection Escalation

XRF RoHS/PB Inspection & Verification (Olympus Vanta)



Inspection Escalation

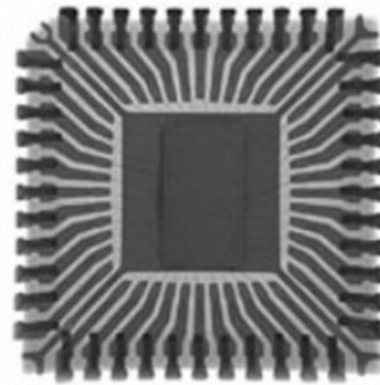
X-Ray Inspection (TruView Prime R)



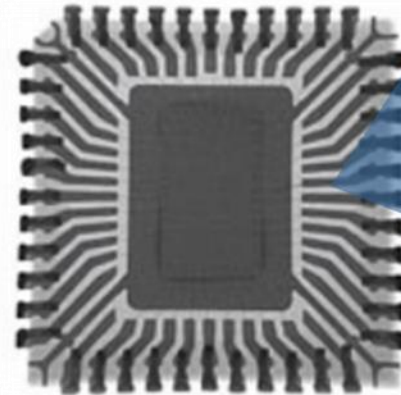
Inspection Escalation

X-Ray Inspection (Failure Analysis Test Cases)

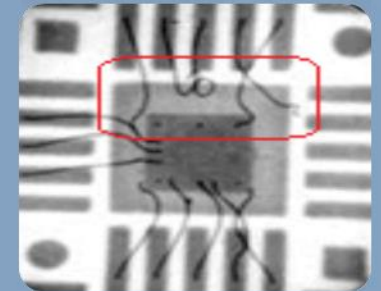
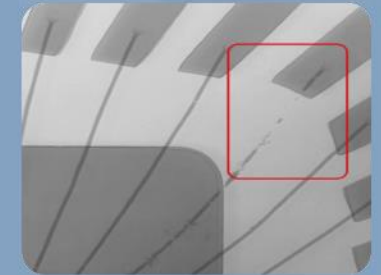
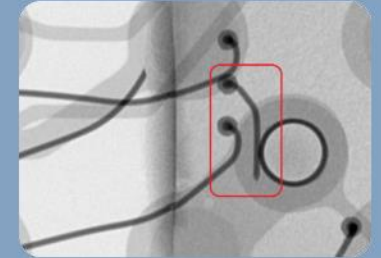
Known Good Part



- Materials that are apparently identical on the outside can be found to be completely different inside when inspected with X-ray Images. (Clear evidence of falsification)



- Fragmented connections
- Broken wire bonds

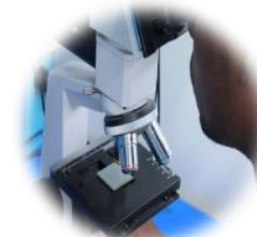
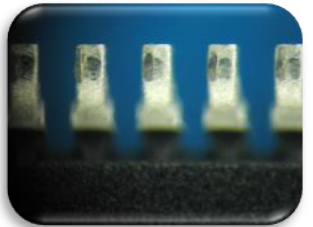


Inspection Escalation

Solder Test (Plato SP-500TP Solder Pots)



- Solderability test utilized when inspecting legacy parts and as a requirement of any customer purchase order.



❖ Microscopic photos examined and digitally stored

Inspection Escalation

Decapsulation (JetEtch Pro Acid Decap System)

- Etches precise openings in plastic packages of all sizes and compositions.
- Advanced pumping principle offers benefits in acid control, safety etc.
- Market-leading speeds for etch head heating & cooling. This provides maximum uptime when changing acid mixes and package types.
- User-friendly extended maintenance.
- Intuitive control -- all system controls are front panel mounted.
- Unique dual waste bottle setup that is an extension of its diversion process.

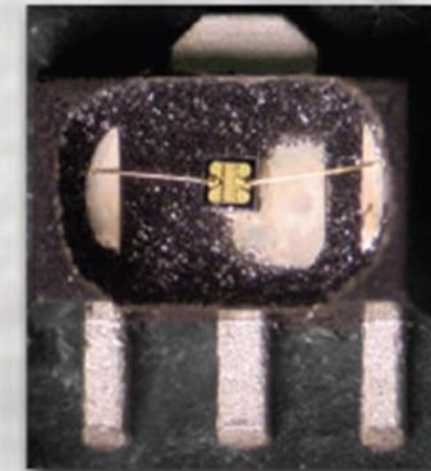


Inspection Escalation

Decapsulation (Air Science USA Fume Hood)



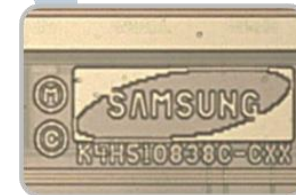
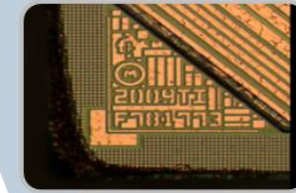
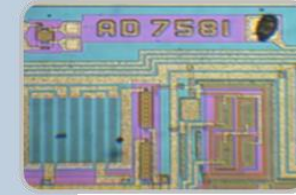
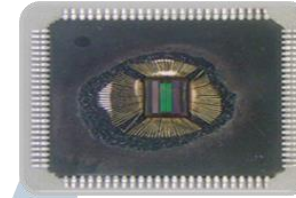
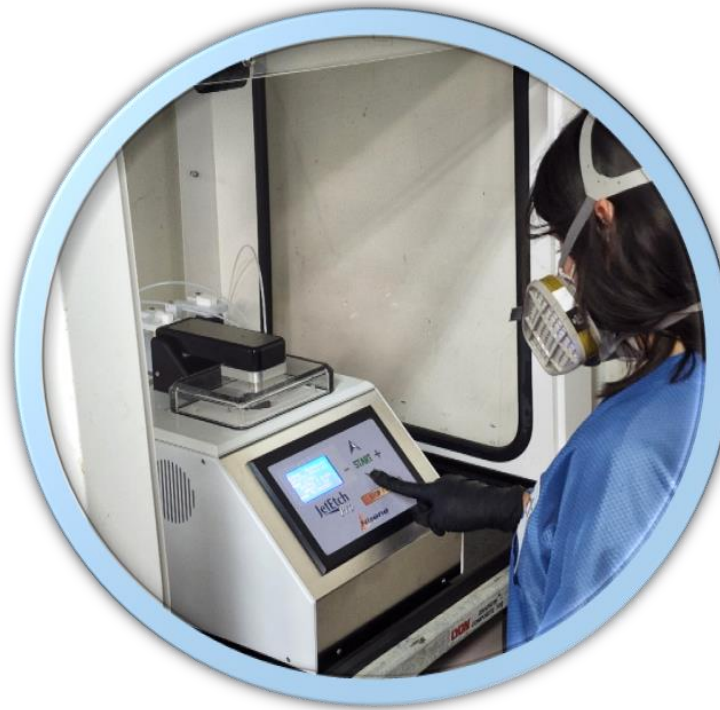
LARGE
Board-Level
Components



SMALL
Surface-Mount
Components

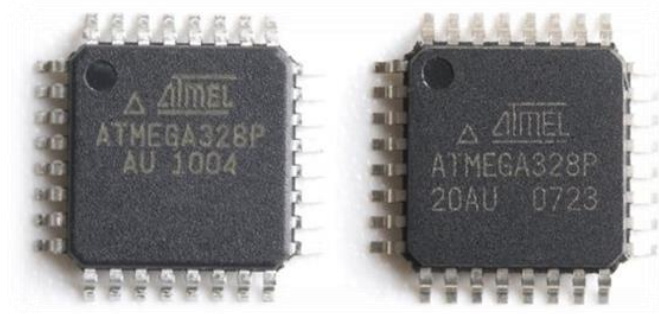
Inspection Escalation

Decapsulation (Cont.)

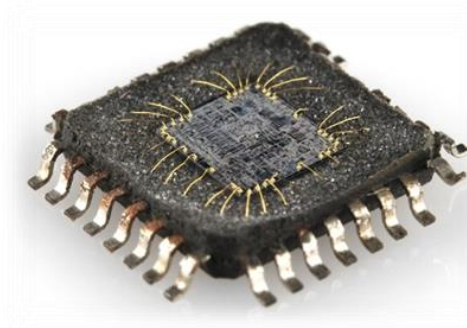


- Inspect die for part, serial, and/or identification numbers
- Cross-inspect against known series number
- Inspect for manufacturer's or partner logo

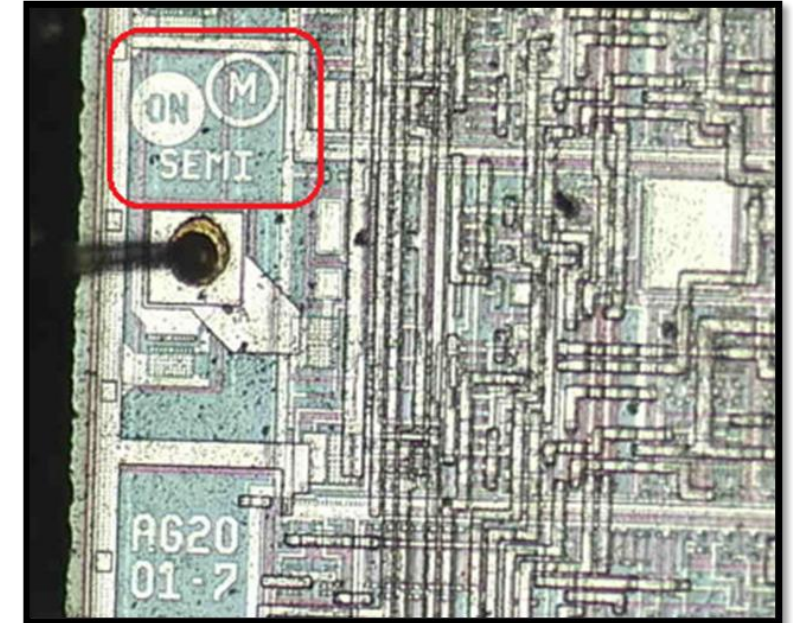
Decapsulation (Test Case)



1. Products received are compared with a “Golden Sample” - Product on the left is the original Atmel item (Golden Sample)



2. After the decapsulation process, the “die” is closely inspected under the microscope.



3. It is clear the decapsulated item is counterfeited (Atmel product with On-Semi details)



THANK
YOU