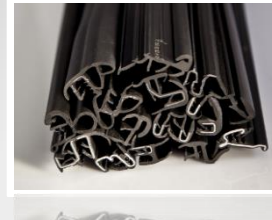




PLASTIC



DIE CASTING



RUBBER SEAL



STAMPING

AUTOMOTIVE SUBTRACTING PARTNER



1 GMD GROUP



2 STAMPING DIVISION



3 R&D : RMC



4 SLP MEXICO



The excellence of a French subcontracting group in
France and abroad



Turnover 2021
millions of euros
945



Workforce
6 634



Subsidiaries
in 14 countries
47

6I Philosophy

INNOVATION

INDUSTRIAL EXCELLENCE

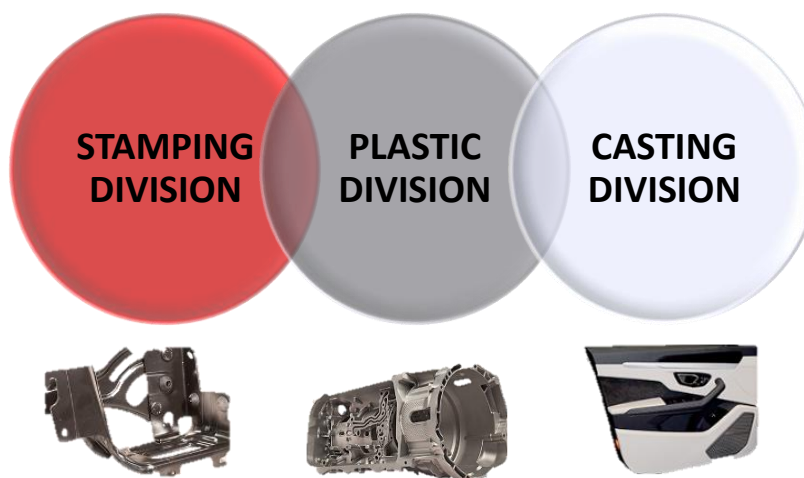
INTERACTION

INVESTMENT

INTERNATIONALIZATION

INTEGRATION

And an organization at the service



Of our customers



12 means customers

SUMMARY

1 GMD GROUP

2 STAMPING DIVISION

3 R&D : RMC

4 SLP MEXICO



- Under the direction of GMD Stamping, the division's holding company, the Stamping division is deployed throughout the world.
- Historical activity of the GMD Group, we put our expertise at the service of our customers from the design to the production of technical and complex parts with high added value.

Workforce

1 606



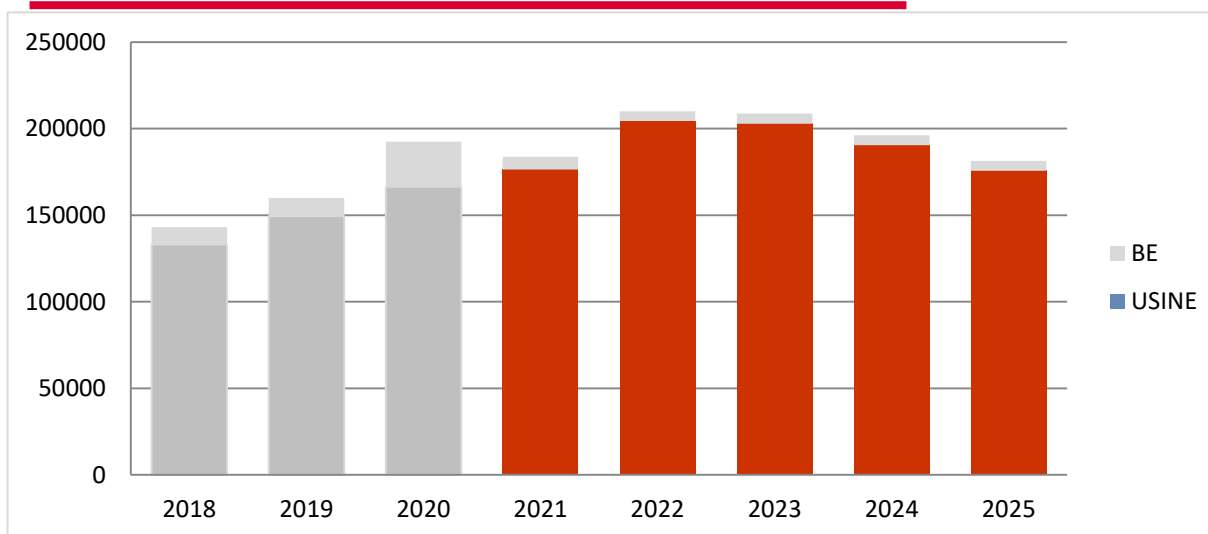
Incl. 150 techniciens et ingénieurs

Subsidiaries world

9



Chiffre d'affaire



TO 2022
millions of euros

195



**MOTTAZ INDUSTRIE (France)**

Creation 2008

ISO / TS16949

Factory : 7 760 m²Store : 1 128 m²**VERON****INTERNATIONAL (France)**

Creation 1975

ISO / TS16949

Factory : 9 827 m²Store : 6135 m²**LUCHARD INDUSTRIE (France)**

Creation 1962

ISO / TS16949

Factory : 30 000 m²Store : 10 000 m²**LS INDUSTRIE (France)**

Creation 1963 (2017)

ISO / TS16949

Factory : 21 000 m²Store : 24 000 m²

Technical Center
RMC INDUSTRIE
FRANCE
MOROCCO
CHINA

**MOTOKOM (Slovakia)**

Creation 2008

ISO / TS16949

Factory : 18 500 m²Store : 2 100 m²**GMD STAMPING**
MEXICO (Mexico)

Creation 2016

ISO / TS16949

Factory : 5 500 m²Store : 37 000 m²**GMD METAL**
TANGER (Morocco)

Creation 2011

ISO / TS16949

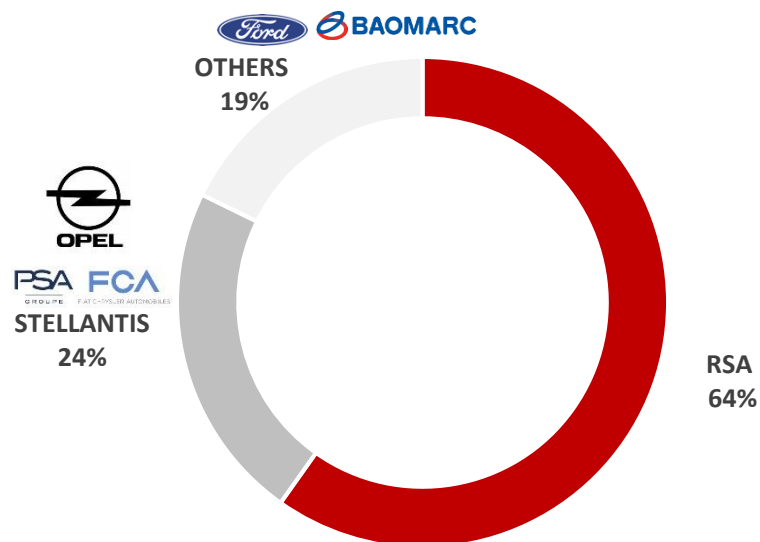
Factory : 21 000 m²Store : 24 000 m²**ANGAO (China)**

Creation 2006

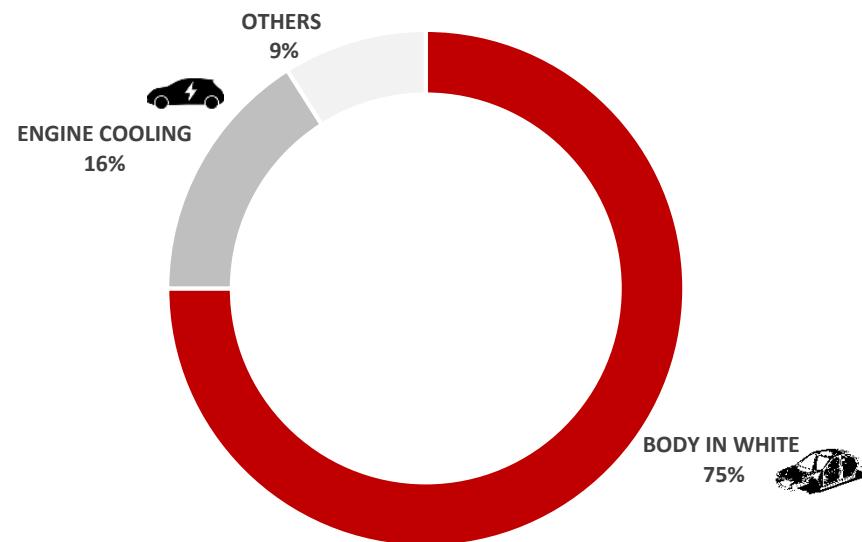
ISO / TS16949

Factory : 7 200 m²

TO / CLIENT



TO/ COMMODITY



OUR MEAN CUSTOMERS



35+ years

RENAULT NISSAN MITSUBISHI



BODY IN WHITE

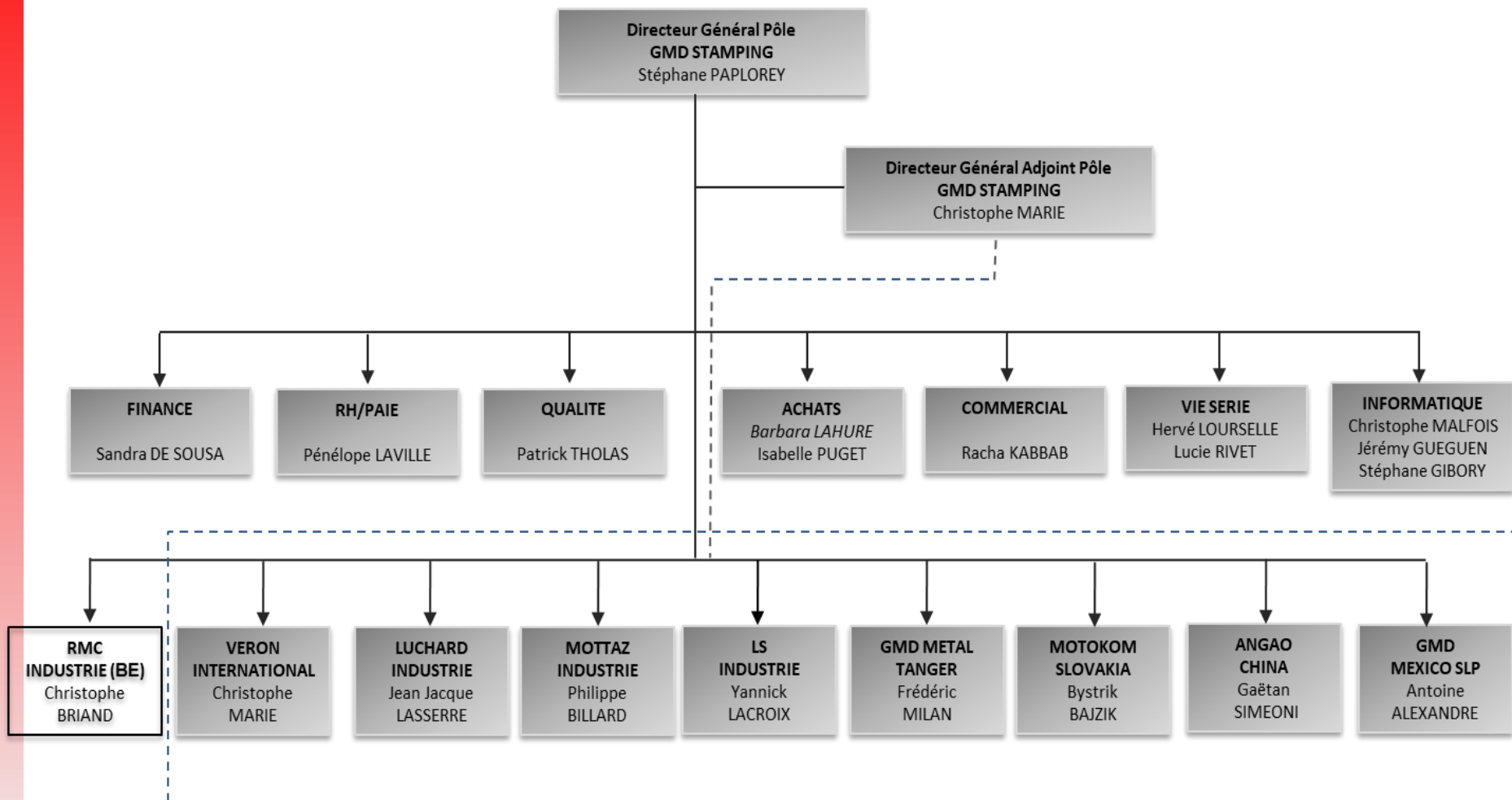
ENGINE COLLING

BRACKING

HARNESS

OTHERS ...





A QSE system adapted to customer requirements



☐ ISO 9001 / IATF 16949

☐ Audit VDA 6.3, QRQC, Standard, QSB+, ASESB, MMOG LE, VRS (LPA), FMEA inverse...

Strong awareness and proactive approach to safety and environmental issues



☐ ISO 14001 (In progress)

☐ ISO 45001 (In progress)

Ethical commitment

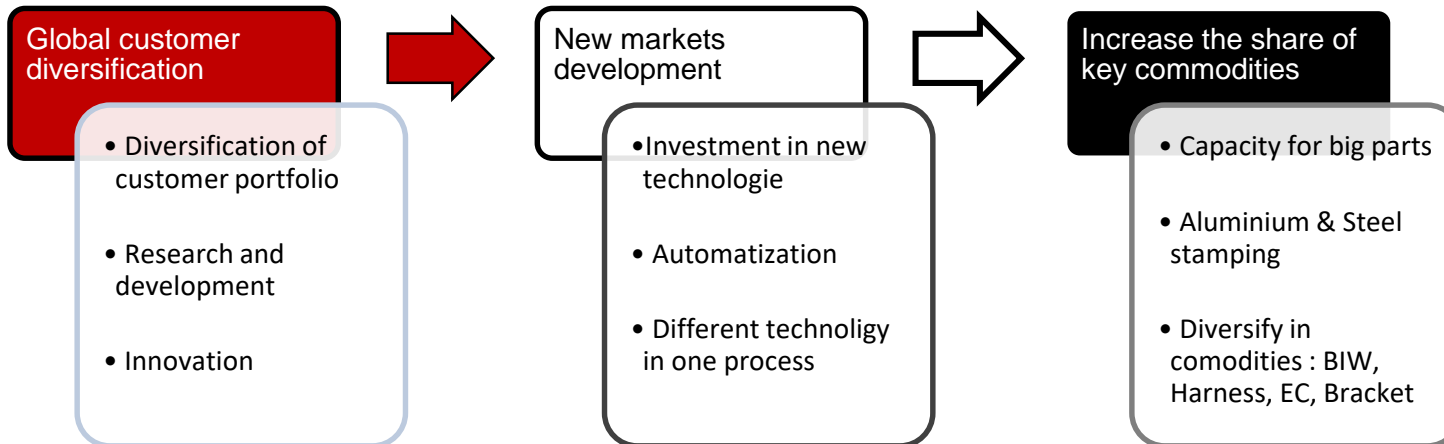


☐ EcoVadis

☐ The GMD Group adheres to the sustainable development charter of the United Nations Global Compact



Automotive industry standards for quality, inspection and cleanliness apply to all our production units



SUMMARY

1

GMD GROUP

2

STAMPING DIVISION

3

R&D: RMC

4

SLP MEXICO



FRANCE / MOROCCO & CHINA – TECHNICAL CENTER (RMC)



10,- Mio. €



26

WORKFORCE
(20 en France
+ 6 au Maroc)



300

PRODUCTS

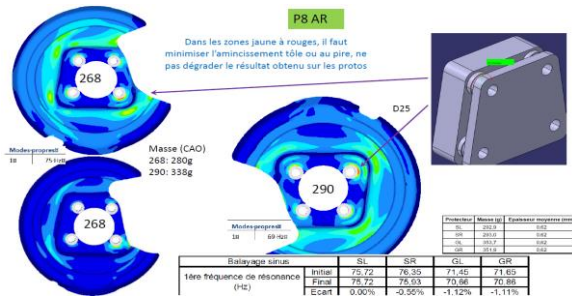


250

TOOLS



Abacus Simulation



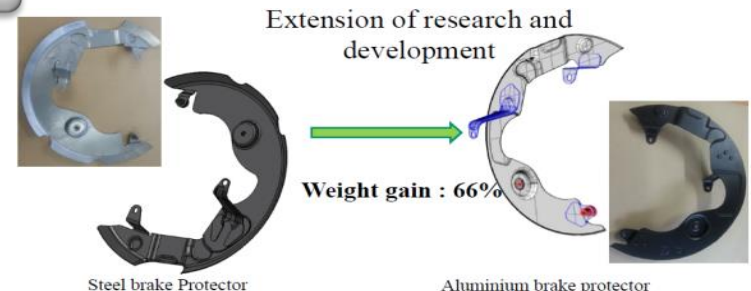
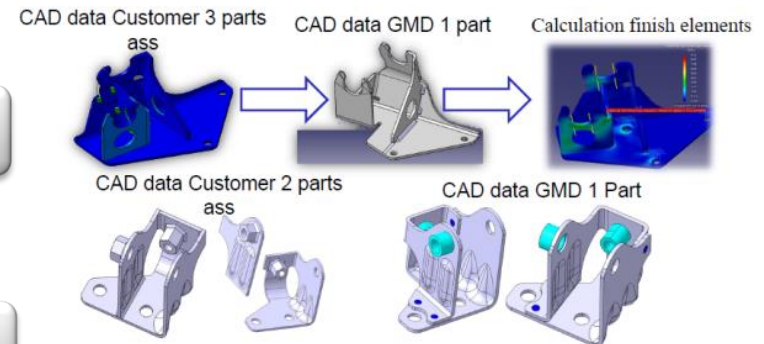
Stamping Simulation AUTOFORM



Achievement

VIBRATION TEST

TRACTION TEST



- Knowledge in the business with 36 years of experience
- Experienced team in the stamping trade, assembly to meet different customer needs
- Continuous innovation on multi-material parts (Metal, Plastic, Aluminum) Strong proposal and customer support from the development phases Development
- Creation of tools made with partners in China
- Costing ensured by a multidisciplinary team from the smallest part to the large part.

SUMMARY

1 GMD GROUP

2 STAMPING DIVISION

3 R&D: RCM

4 SLP MEXICO



4 GMD SLP



ADDRESS

PARQUE INDUSTRIAL MILLENIUM
Calle Cuatro #105, Int. 15, Lote 5 / SLP
78395 MEXICO



ESTABLISHED

2016



CERTIFICATION

ISO 9000 / IATF16949



SURFACE

Build: 5 500 m²
Land: 37 000 m²



OPERATORS

Direct: 95 associates
Indirect: 64 associates

VIBRACOUSTIC
9%

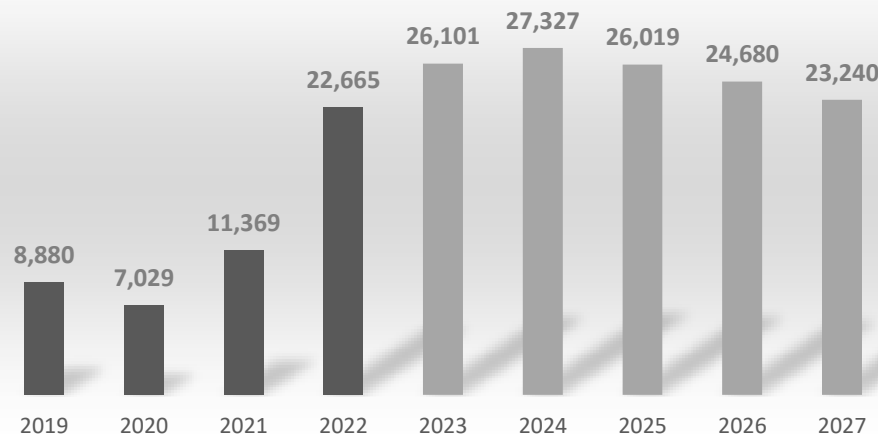
KONGSBERG
2%

TO BY CUSTOMER

FAURECIA
89%



TO Evolution K€



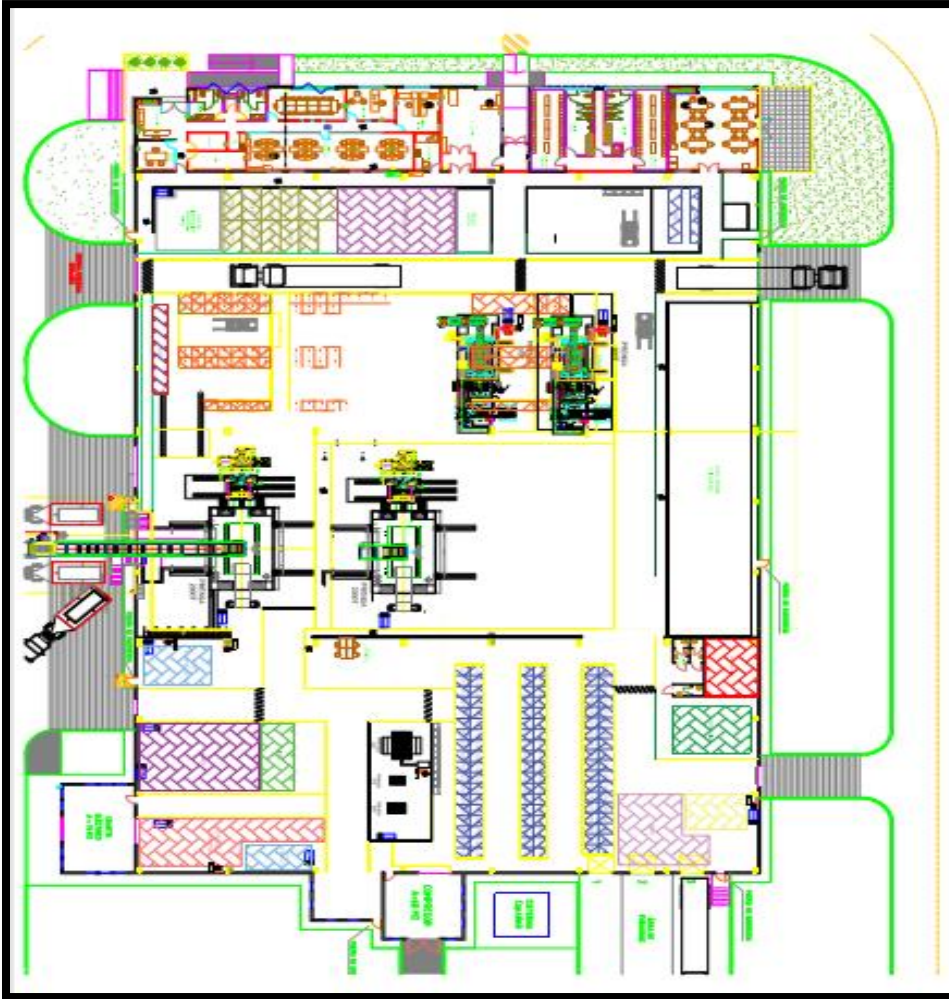
LOGISTIC PERFORMANCE



QUALITY PERFORMANCE



- GMD SLP Mexico have possibility of investment with acquisition of new business












Equipment List

- ❖ 1 progressive press 800T
Dimensions (mm): L 3200 * W 1500
- ❖ 1 progressive press 500T
Dimensions (mm): L 3200 * W 1500
- ❖ 2 Transfer presses 2000T
Dimensions (mm): L 6000 * W 2400
- ❖ 1 Manual Press 200T
Dimensions (mm): L 2000 * W 1200
- ❖ 1 Manual press 75T
Dimensions (mm): L 800 * W 480
- ❖ 1 Manual press 80T
Dimensions (mm): L 580 * W 1000
- ❖ Welding & Assembly
 - 3 spot machine
 - 1 assembly bushing line

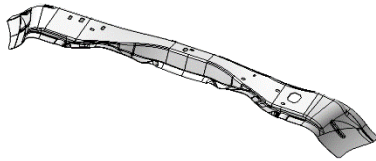


- Example of our current production parts in SLP Mexico plant.

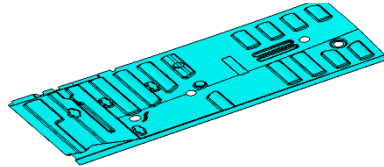
BACKREST SIDEMEMBER	SEAT PAN	BRACKET GUSSET	LOWER PLATE	BRACKET GUSSET
 <p>Steel: DPC420Y780T Thickness: 0.9mm</p>	 <p>Steel: CR04 Thickness: 0.9mm</p>	 <p>Steel: FEE500 Thickness: 2.2mm</p>	 <p>Steel: J2340 060XF HSLA Thickness: 3.5 mm</p>	 <p>Steel: S420MC Thickness: 3.0mm</p>
BRACKET RH / LH	BRACKET EPUMP CCS R ASSY	BRACKET-BELT BUCKLE	LEVER RECLINER RH / LH	LEVER RECLINER RH / LH
 <p>Steel: HRS550 MC Thickness: 2.5mm</p>	 <p>Steel: SAE J2340 420 Thickness: 2.0mm</p>	 <p>Steel: HR 490XF SAE J 2340 Thickness: 2.5mm</p>	 <p>Steel: HSLA 420 XU SAE 2340 Thickness: 2.0mm</p>	 <p>Steel: S420MC Thickness: 3.5mm</p>

- Example of Potential production parts in SLP Mexico plant.

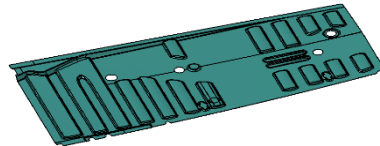
PLATFORM CENT X-MBR



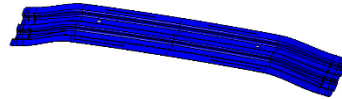
RH FRT FLOOR



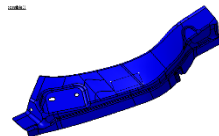
LH FRT FLOOR



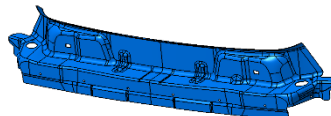
BOW CENT ROOF PANEL



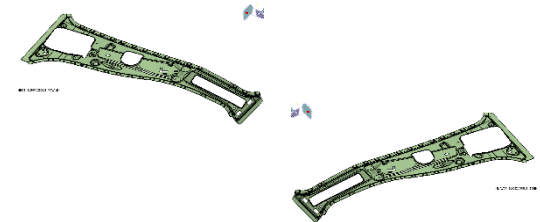
RR FLAP RH INTAKE GUTTER



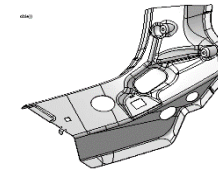
INNER CROSSMEMBER RR ROOF PANEL



INNER PILLAR CENT RH / LH



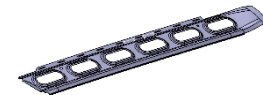
RH RR WING GUTTER GUSSET



FRT PART RH/LH RR WING LINING



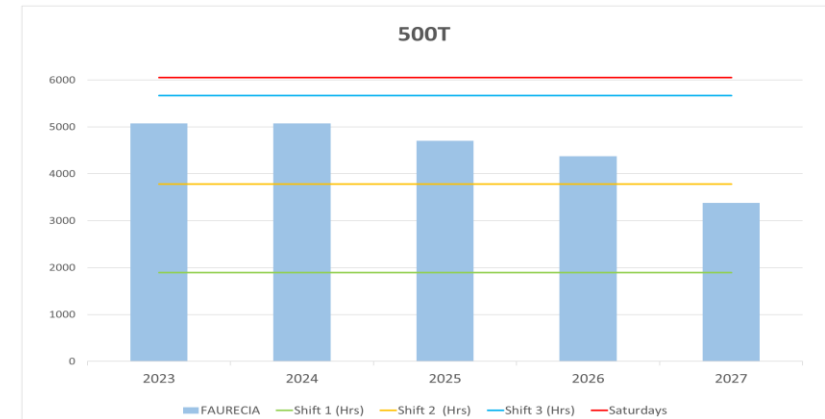
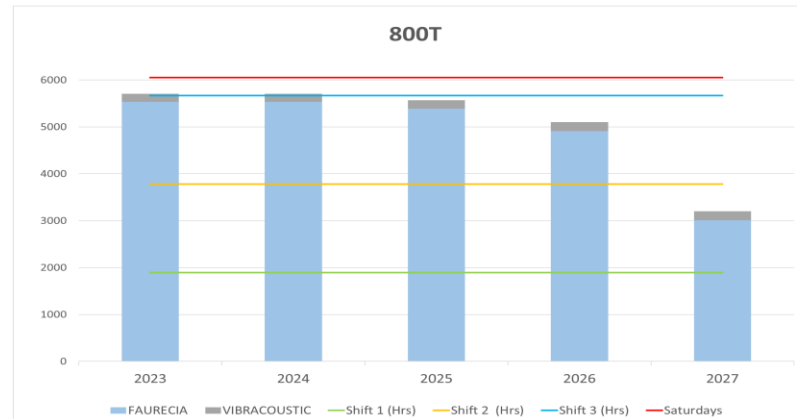
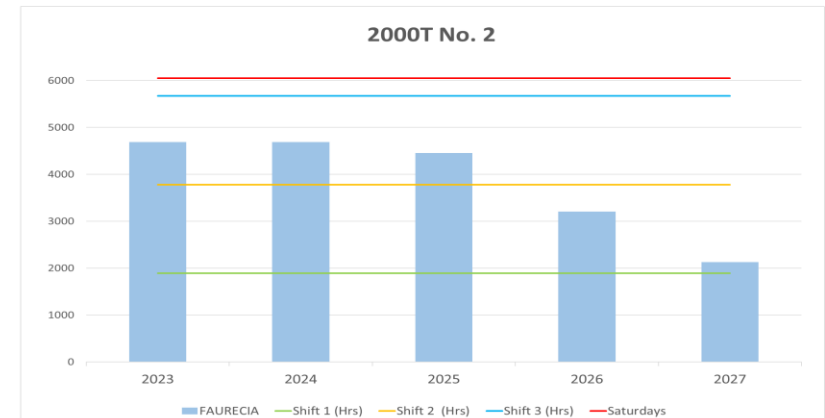
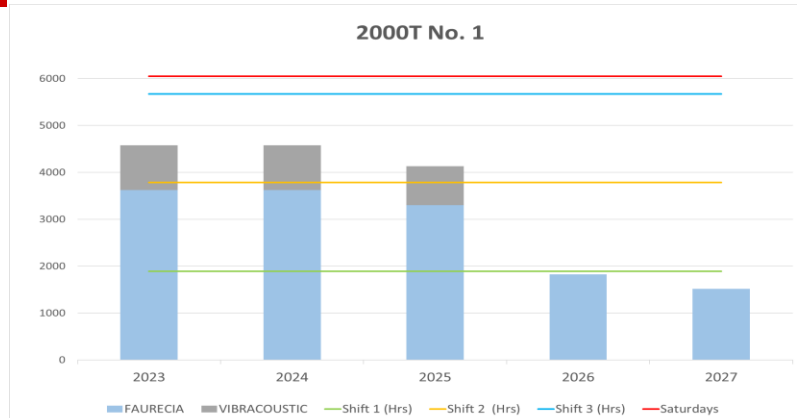
STIFFENER HORIZONTAL DOOR RH



STIFFENER HORIZONTAL DOOR RR RH/LH



Loading Plan 2023 – New projects have been launched in the 2022 year.



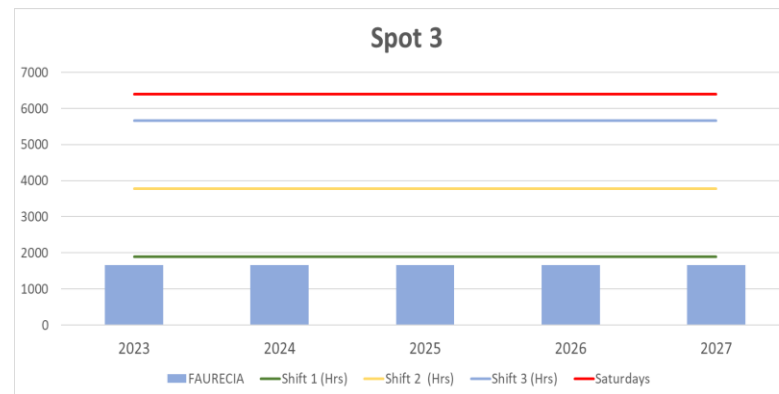
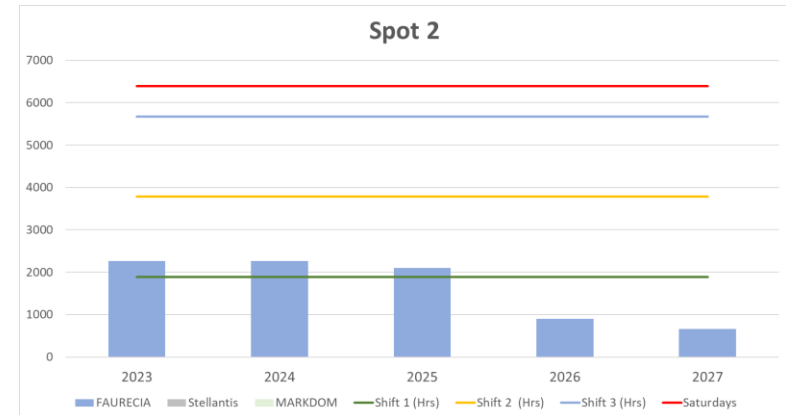
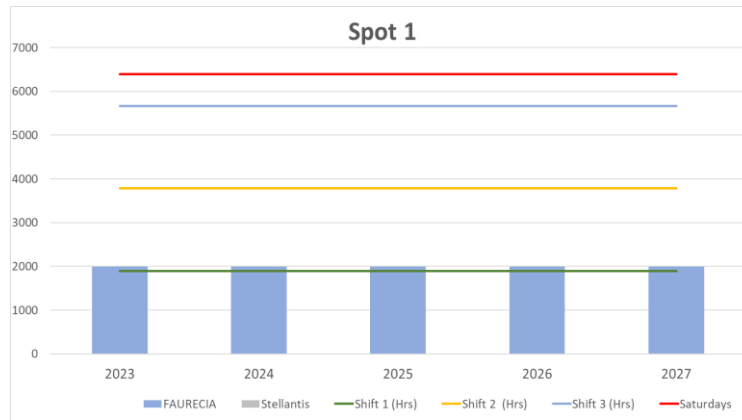
800T Press: Saturdays available.

500T Press: 15% of capacity available.

2000T No. 1 Press: 30% of capacity available.

2000T No. 2 Press: 30% of capacity available.

Plant Loading: In 2023 we will start up the Jeep WS program, however, there is still available capacity



200T Manual Press: Capacity 100% available for new business

80T Manual Press: 2 Shifts available for new business

75T Manual Press: 2 Shifts available for new business

Welding line (3 Machines): 2 Shifts available for new business

- SLP Plant has a tool shop dedicated to:
 - ✓ Tooling Preventive Maintenance
 - ✓ Tooling Improvements
 - Quality of the part
 - Speed of the tool
 - Engineering Changes



- IATF 16949 Audit was completed on July, 2019
- Yearly Audit Review was completed on March, 2023



- San Luis Potosi plant is a greenfield plant inaugurated in 2016
- This green field has been built based on a partnership with Faurecia
- 2021 Turnover was 11.3 Mio€ and is forecasted to achieve 20.8 Mi € in 2022.
- GMD Stamping Group has the target to increase our customer portfolio as part of continued and stable growth, and keep current business with current customers.
- GMD Stamping Group is available to make an expansion in current Mexico facilities, to increase our current capacity for future business.



PLASTIQUE



FONDERIE



ÉTANCHÉITÉ



DÉCOUPAGE /
EMBOUTISSAGE

LE PARTENAIRE GLOBAL

DE LA SOUS-TRAITANCE AUTOMOBILE

