



# Diseños Metalicos JMh S.A. de C.V.

---

[www.jmh.com.mx](http://www.jmh.com.mx)



# Company Background

---



Diseños Metálicos JMH SA. de C.V. was founded in 2002 in Monterrey, Nuevo León by Julián Macías Chávez. It is a 100% Mexican company with extensive & dedicated experience in the metal products manufacturing market, always being at the forefront of changes in the metal-mechanical sector.

Facility size 22,400 sq ft

Capacity to manufacture 40 dies per year (average)

JMH has managed Max Value Project: \$150,000 USD

Max Tooling Dimension : (L)108"x(W)60"x(H)30"

Max Parts Dimensions : (L)96"x(W)40"



## Mission

- JM is an organization dedicated to manufacture of manual and progressive dies, checking fixtures, poka-yokes and machining services also as stamping supplier for our customers by the commitment of every company collaborator. Using the best working practices and procedures for the human and structure development, reaching the quality specifications from our customer, providing continues support for domestic and foreign market.

## Vision

- To become a leader organization dedicated to manufacture of manual and progressive dies, checking fixtures, poka-yokes and machining services, having the must trained and competitive personnel with edge technology for their products, assuring our customer preference and new markets.

## Objectives

1. To increase sales over 15% compare with 2022
2. To deliver product 100%
3. To increase and maintain continues development projects internal 100%
4. To maintain customer satisfaction over 100%, reduce rejects below 3%.
5. To reinforce quality culture in the whole organization
6. To accomplish 100% internal KPI's.



# Strategy



# Certifications

ZERTIFIKAT · CERTIFICATE · 認證證書 · CERTIFICADO · CERTIFICAT



## CERTIFICATE

The Certification Body of  
TÜV SÜD AMERICA INC.

hereby certifies that



**Diseños Metálicos JMH S.A. de C.V.**  
Priv. Regio Parque #111 Regio Parque Industrial  
Apodaca, N.L. 66600 Mexico

Has implemented a Quality Management System in accordance with:

**ISO 9001:2015**

The scope of this Quality Management System includes:

Manufacturing of Manual and Progressive Dies, Checking  
Fixtures and Poka-Yoke Devices and Maquila Services  
like Stamping for General Industry

Certificate Expiry Date: September 23, 2024

Certificate Registration No: 951 18 4803

Issue Date: October 26, 2021

Reissue Date: N/A



  
Greg Bates  
Director Business Assurance America



TÜV SÜD America Inc. • 401 Edgewater Place, Suite 500 • Wakefield, MA 01880 USA • [www.TUVSUD.com](http://www.TUVSUD.com)

The validity of this certificate is contingent on the company maintaining its management system to the requirements of the indicated standard and is subject to regular monitoring by TÜV SÜD America.

TUV®



# Data Management

Cyber Security: By  
Kaspersky Internet  
Security (Anti-Virus)



Confidential and  
Industrial Secret  
Procedures:  
According NDA ( Non-  
Disclosure  
Agreement )





# Work experience

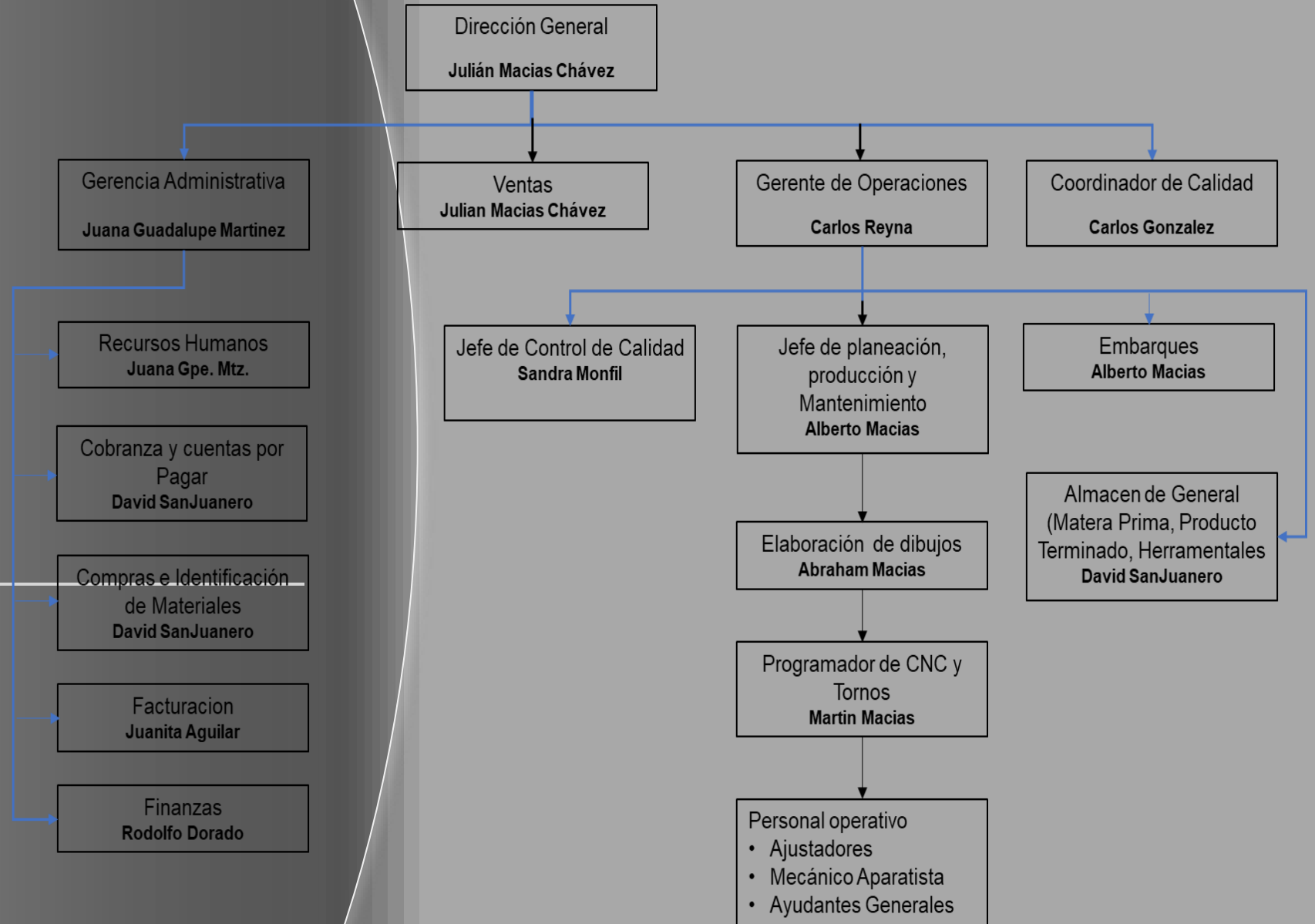
Company Differentiator : Quick response to requests.

- Headcount : 24 employees
- Specialized head count : 15
- Average workers years of experience : 10 years



Skill	Head Count	Experience
CNC Operator	11	+10 years
Tooling setup	2	+25 years
Matrix Operator	2	+ 15 years
Apprentice	1	+ 1 years
Quality Eng	1	+ 25 years
Management	9	+ 28 years
Total	24	

# Management





# Manufacturing Machinery & Equipment



#	Manufacturing Equipment	Description	Table Size
1	Vertical Milling	CNC Vertical Hass	X60,Y40,Z20
2	Vertical Milling	CNC Vertical Hass	X40,Y20,Z20
3	Vertical Milling	CNC Vertical Hass	X40,Y20,Z20
4	Vertical Milling	CNC Vertical Hass	X40,Y20,Z20
5	Vertical EDM	ACUTTEX AU500 Mod. AE5	650 x 350 mm
6	Vertical EDM	ACUTTEX GA Mod. 43AL	650 x 350 mm
7	Vertical Milling	Manual Mclane	X35, Y12, Z18
8	Vertical Milling	Manual Mclane	X35, Y12, Z18
9	Lathe	CNC Hass	60 mm
10	Lathe	Manual Lathe	80 mm
11	Vertical Grinding Machine	Grinding	X32, Y14, Z18
12	Vertical Grinding Machine	Grinding	X25, Y12, Z15
13	Cylindrical Grinding	Grinding	60 mm



# Quality Equipment











# Metal-Cutting CNC Bridge, Machine Tools

Coming soon, March/2023

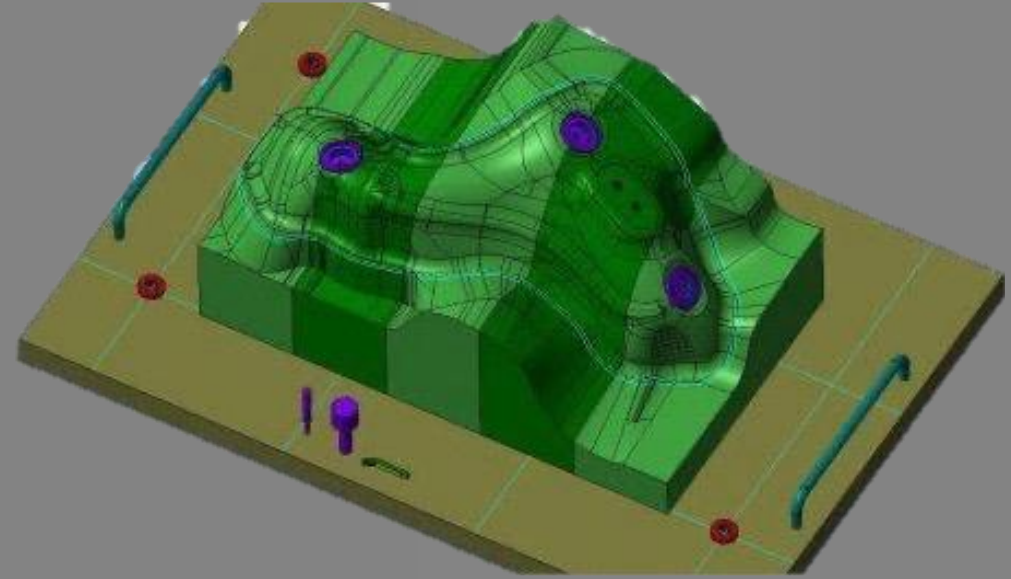


Specification	Unit	XH3019
Table size	mm	3000*1500
Max load capacity	ton	9
Table travel - X axis	mm	3100
Table travel - Y axis	mm	1900
Table travel - Z axis	mm	900
Magazine capacity	/	24
Tool magazine type	/	Disc
Controller	/	FANUC 0i MF5
Positioning accuracy	mm	±0.005/300
Repeat Positioning accuracy	mm	±0.005/1000
Machine net weight	ton	22
Machine overall size	m	8.5x4.5x4.5



# Design and Manufacturing Capacity

software :  
SolidWorks  
Master Cam  
Auto Cad

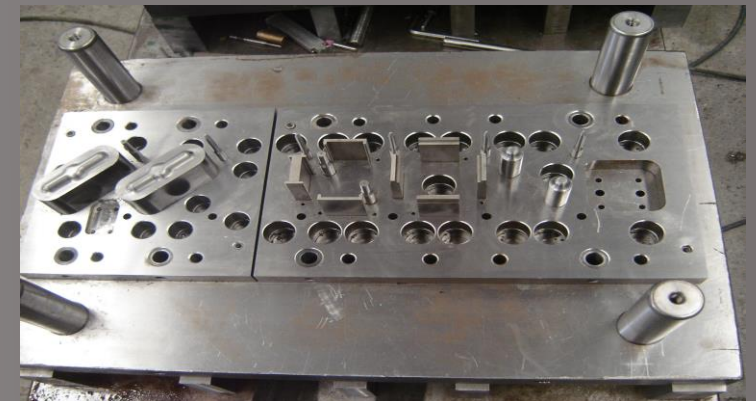
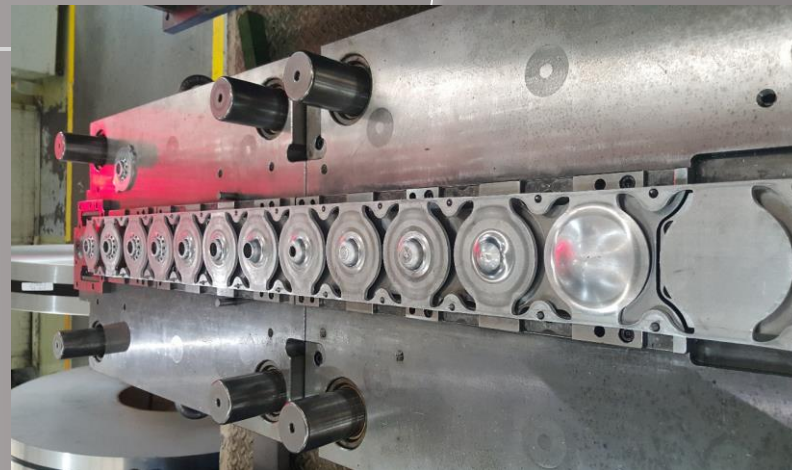
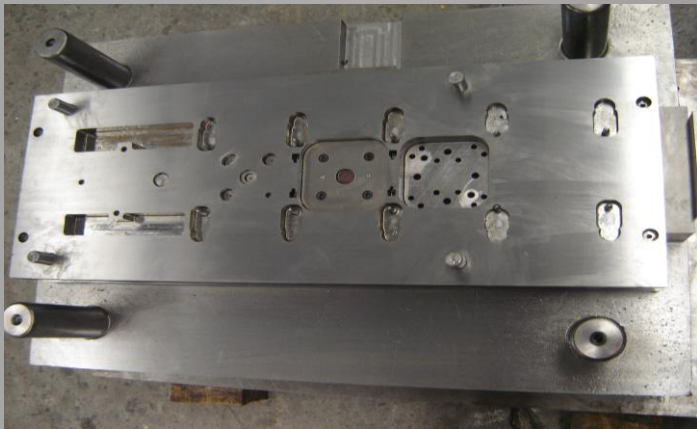
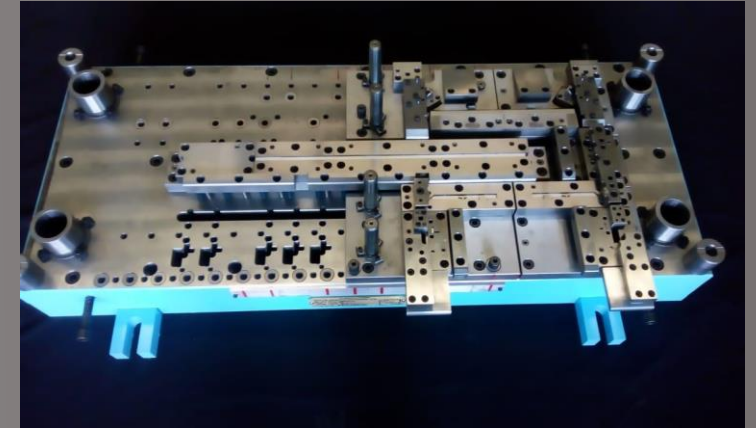
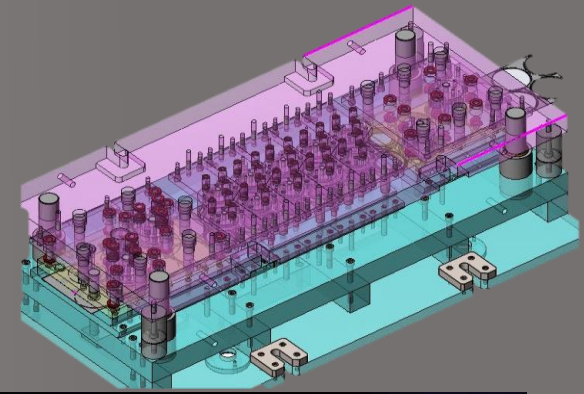


**3D SOLIDWORKS**

S/N MLP204Y0X8Y2



# Tooling Dies, Manual and Progressive Dies





**Project 61US-54589**

**TIER I: Mahle**

**OEM: Ford**

**2018MY C519 ATWU**

**PN 5220-40048629S00**



  
Project 61US-54589

TIER I: Mahle

OEM: Ford

2018MY C519 ATWU

PN 5224-40048635-S00

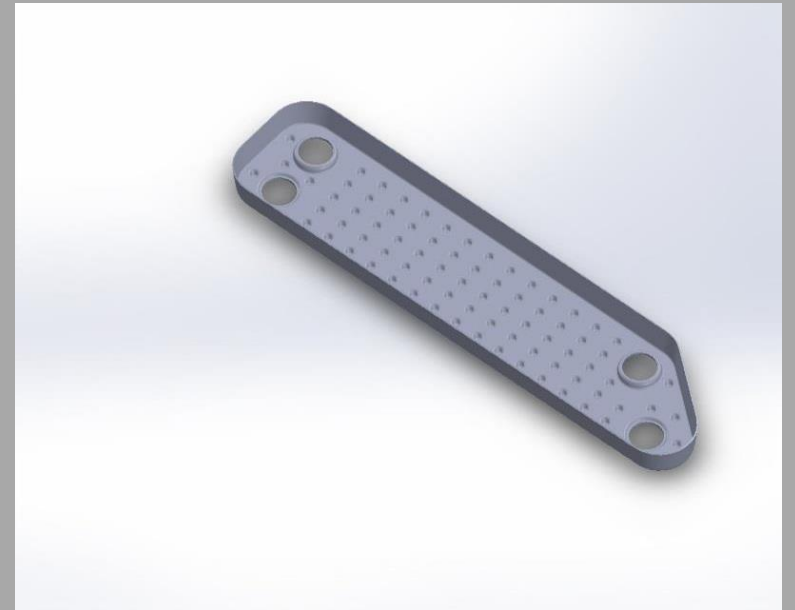
Project 61US-54589

TIER I: Mahle

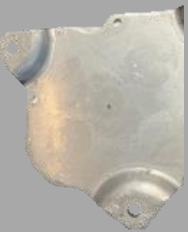
OEM: Ford

2018MY C519 ATWU

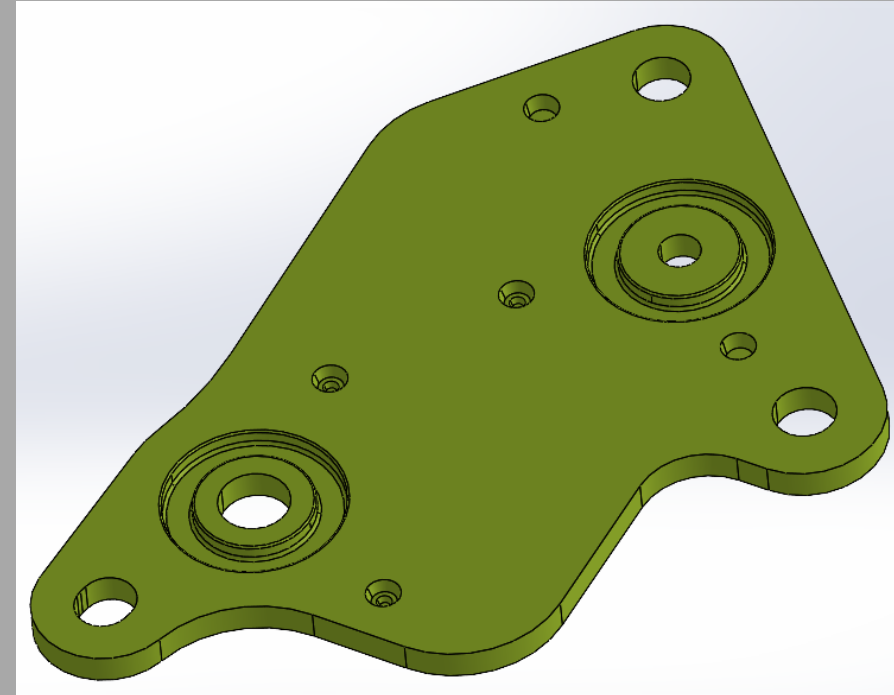
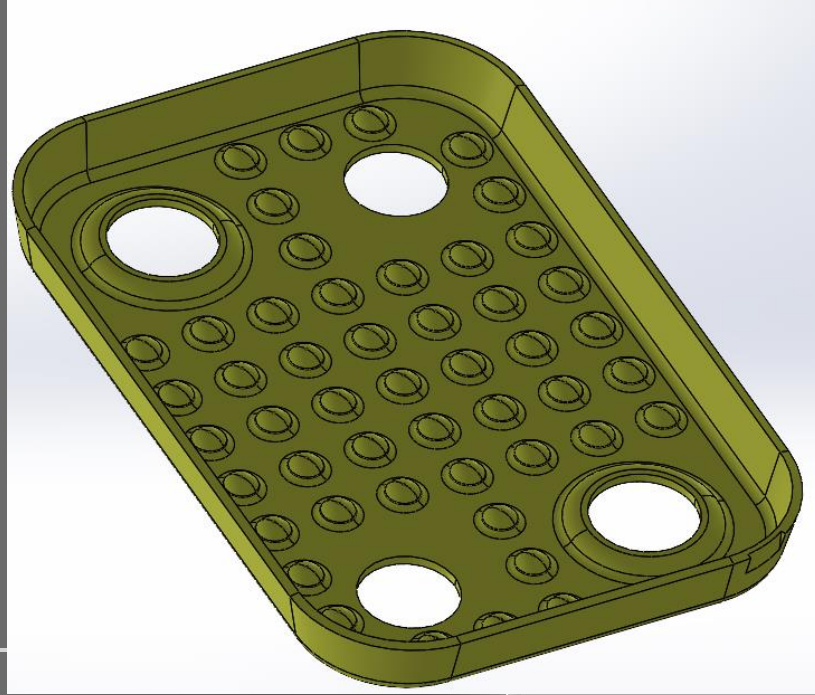
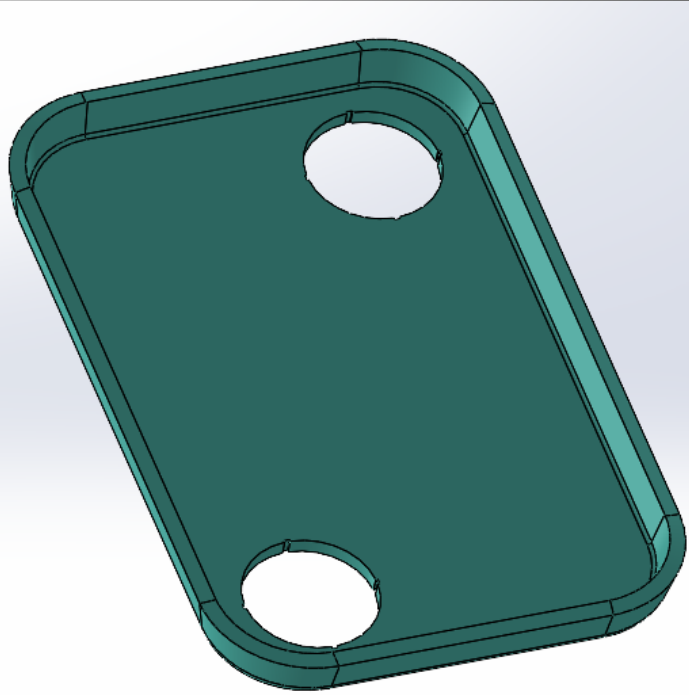
PN 5212-40048637-S00



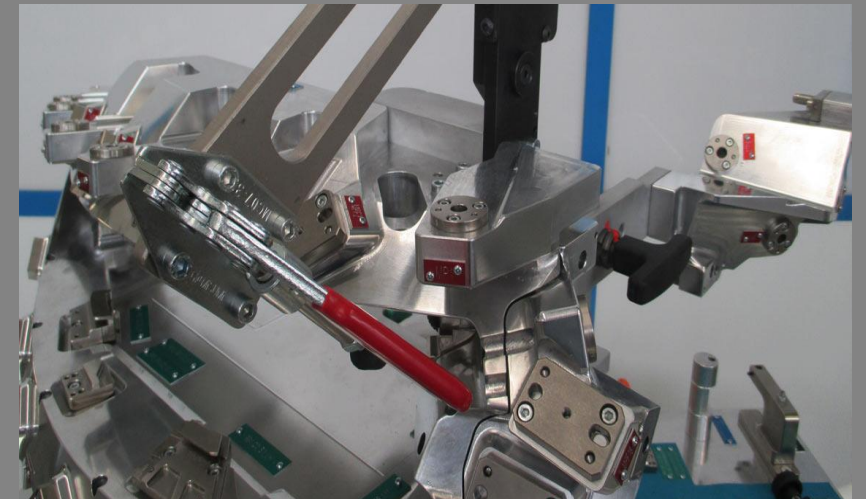
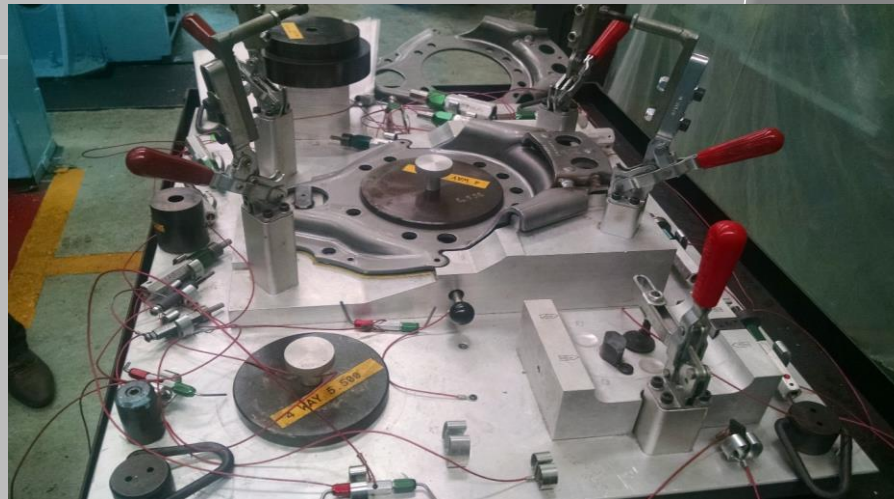
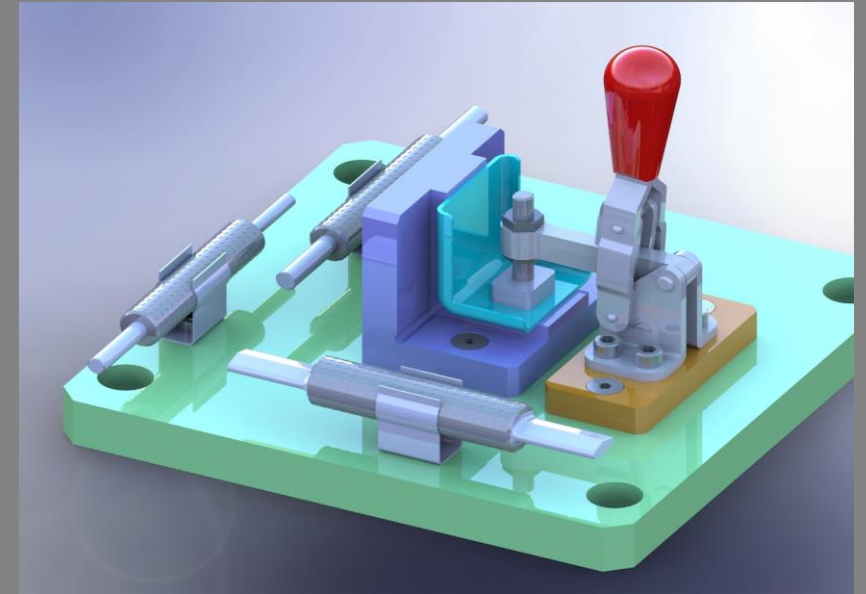
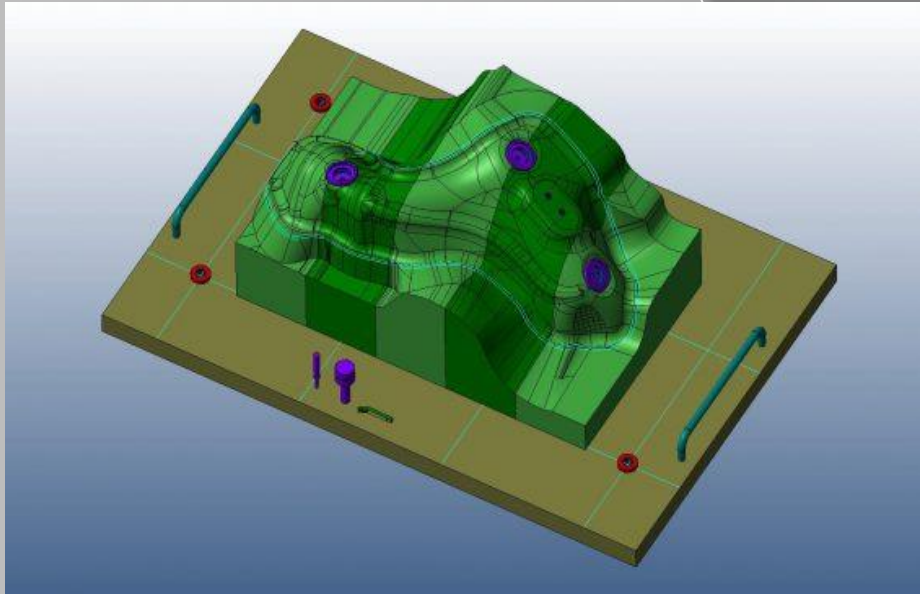
# Products: Diversity of Stamped Parts



— We can manufacture from a simple part, to a very complex one

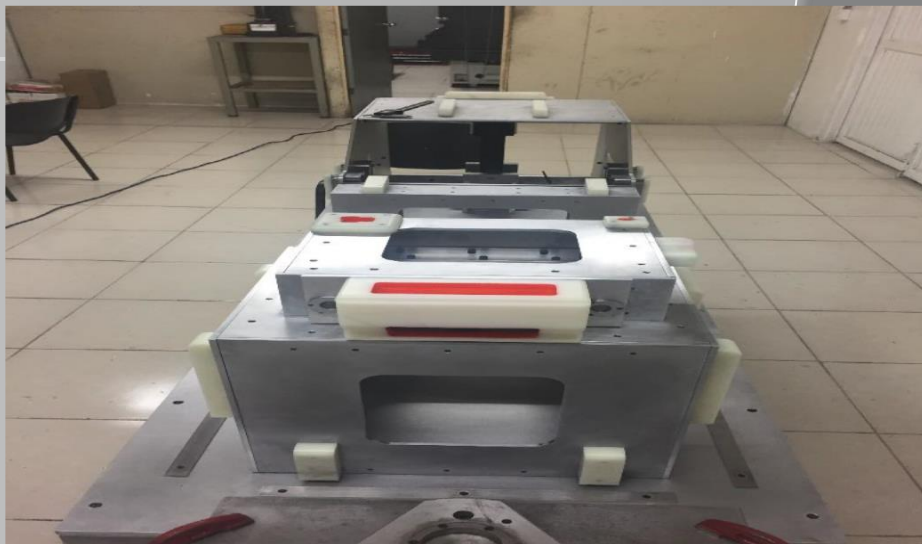


# Design and Manufacturing Checking Fixture

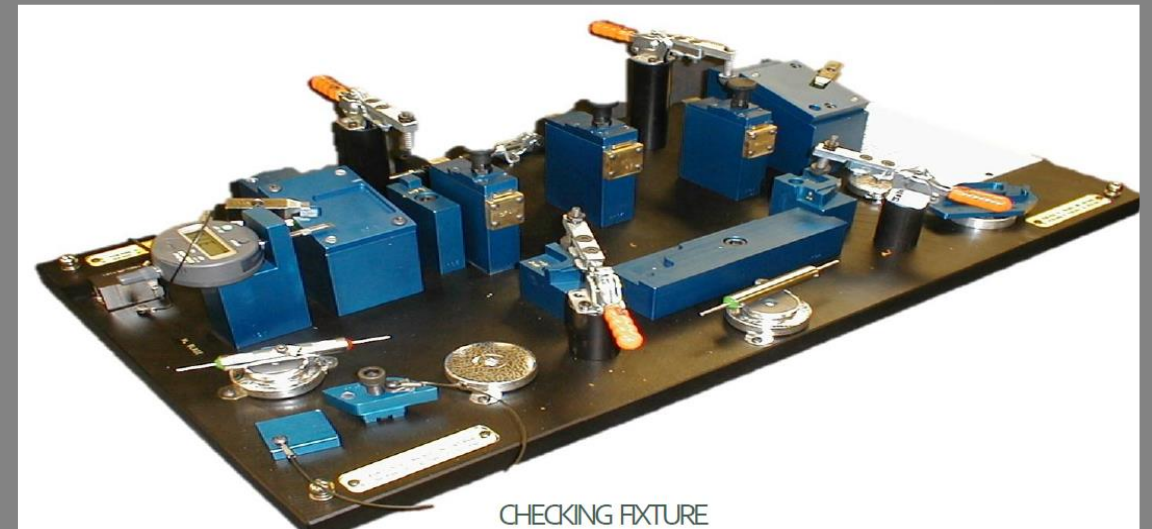
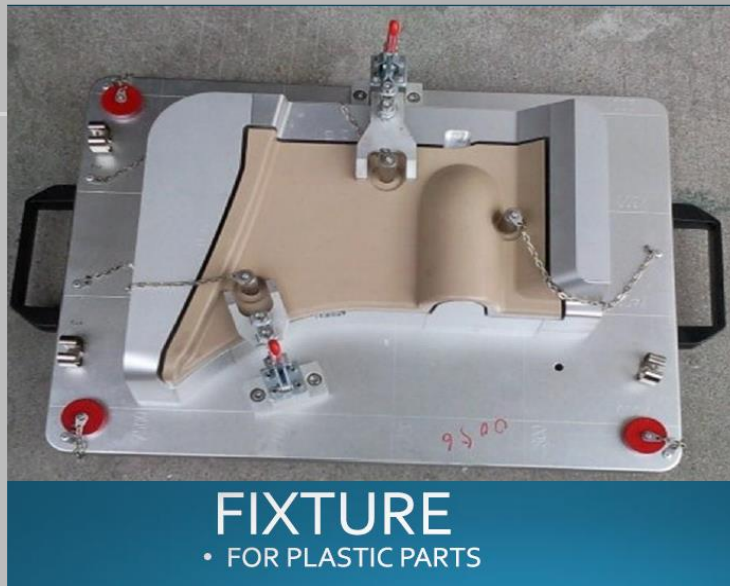




# Design and Manufacturing Checking Fixture

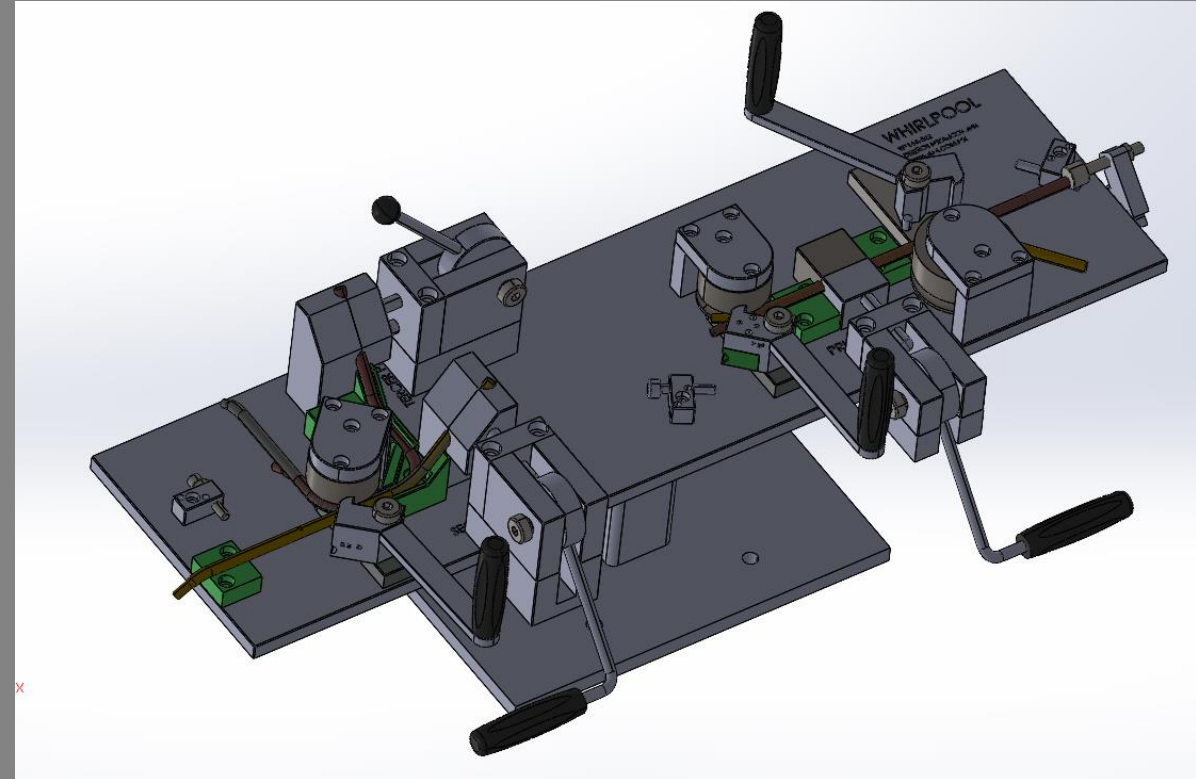
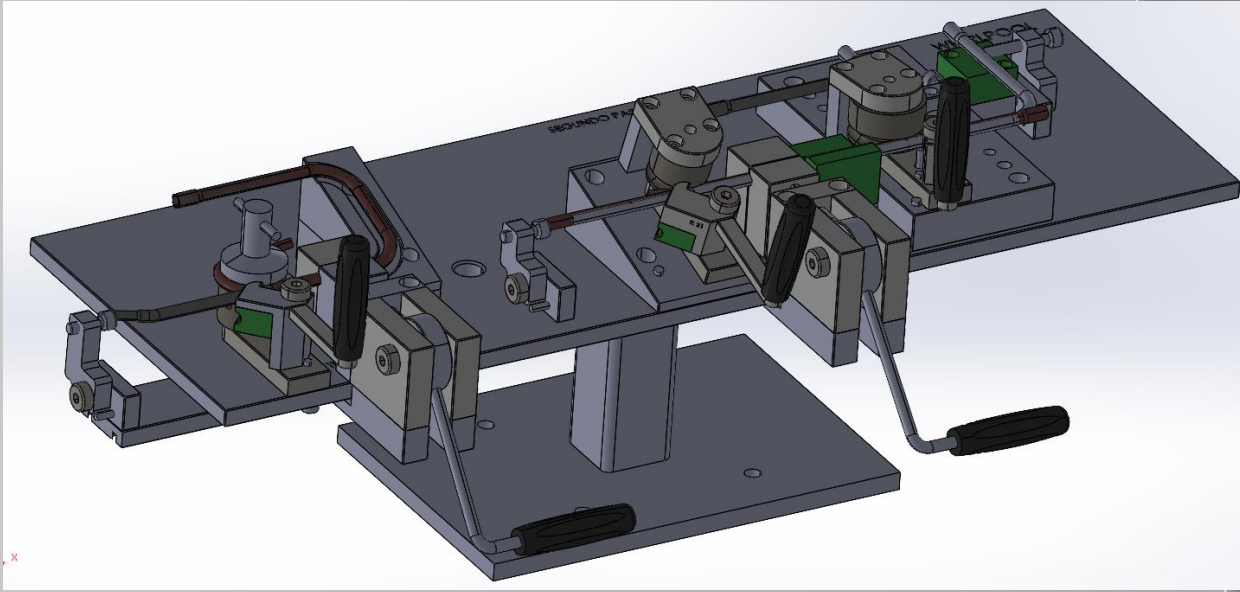


# Design and Manufacturing Checking Fixture





# Design and Manufacturing Bending Device





# Try Out Equipment



#	Manufacturing Equipment	Description	Spec's
1	Stamping press	Blow press LTD	150 Tons
2	Stamping press	Verson C2	300 Tons
3	Crane	Over head crane	2 Tons
4	Workshop Turbine	Cleaning turbine	Air tooling
5	Drills	Manual Drills	1" spkt
6	Welding Machine	Tig	150 MHZ

# Our Supply

Tool Grade Steel from:



Standard components:

- Dayton

- Danly

- Hyson

- Dadco



Customers



Turn to the experts



**MAHLE**

**Whirlpool**





## Contact

---

Privada Regio Parque  
Regio Parque Industrial  
Apodaca  
Nuevo Leon  
Mexico  
66600

Julian Macias Chavez :

[julian@jmh.com.mx](mailto:julian@jmh.com.mx)

Main Phone : 81 80 73 11 60 Ext. 105

Cell Phone : 81 1786 7262



[www.jmh.com.mx](http://www.jmh.com.mx)