



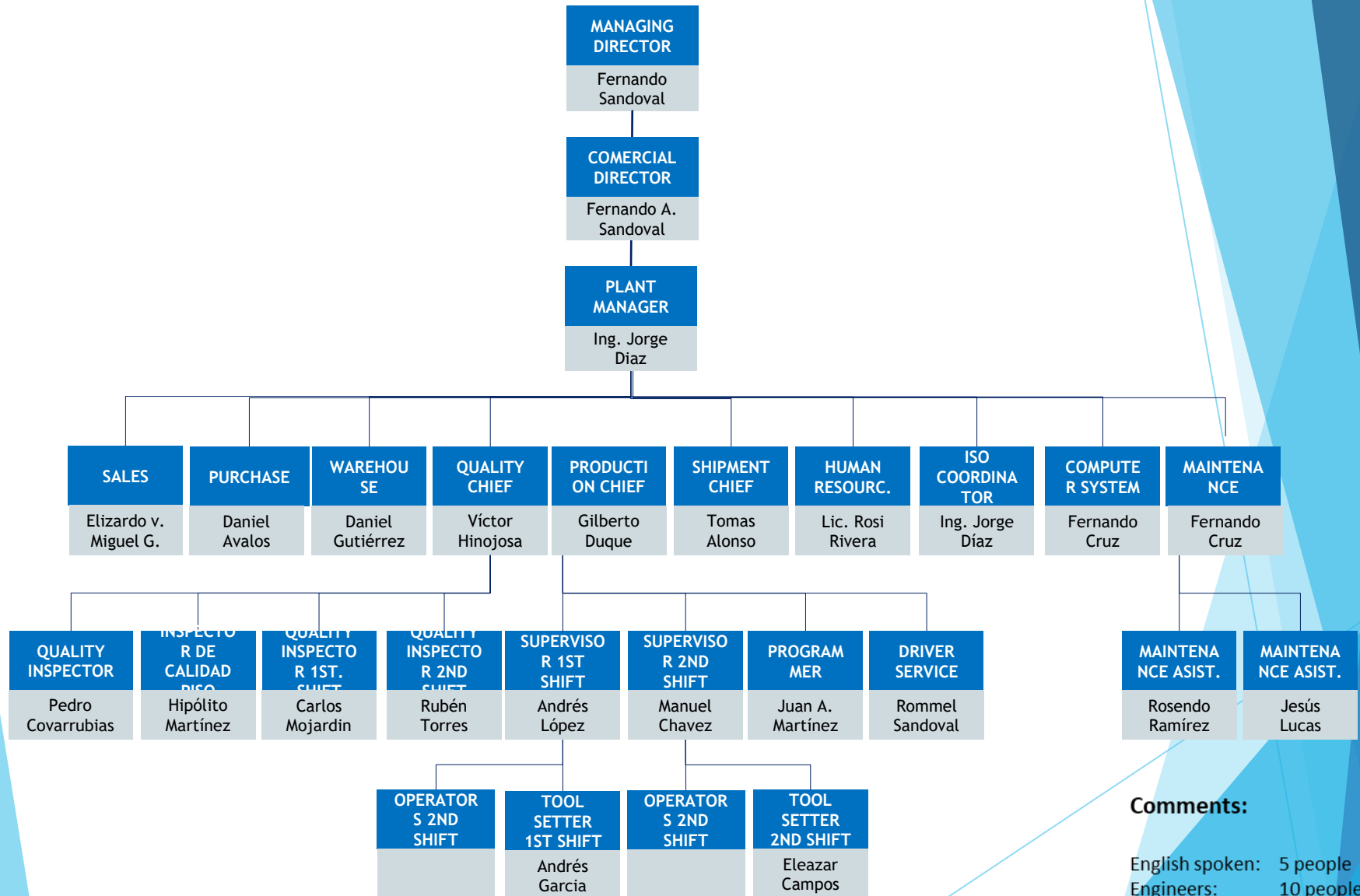
MAQ-REY S.A. DE C.V.

Address: Revolucion 530 Col. Burocratas del Estado,
Monterrey N.L. Mexico CP 64380 Tel. 52 81 83717550 /
27211313

Contact: **Miguel A. Gutierrez**
email : ventas@maq-rey.com

Please feel free to contact us, **WE SPEAK ENGLISH**

www.maq-rey.com



Comments:

English spoken: 5 people
Engineers: 10 people
Multi-skill staff

We are a Machining company focused on the manufacture of industrial components in large production runs. More than 30 years of experience let us to develop our capabilities according to our customers requirements: Oil and Gas, Electronic, Electrical, Medical, Automotive, Appliance, Mining industry and in the same way to have a global presence trough our customers.

PROFESSIONAL BACKGROUND:

1988	Maq-Rey started up operations with conventional equipment.
1996	Maq-Rey started developing automatic process
1998	Maq-Rey moved to our current building.
2001	Maq-Rey started to be focused on medium and large production.
2009	Maq-Rey is certified according <i>ISO 9001: 2008</i>
2012	Maq-Rey starts to export directly to U.S.A. and to develop strategical relationship with important distributors of raw materials in U.S.A.
2014	Acquisition of our first CNC swiss CINCOM citizen
2015	Acquisition of our second CNC swiss CINCOM citizen
2017	Certified ISO 9001: 2015 / sept 2017
2020	Acquisition of our third CNC swiss CINCOM citizen



ISO 9001:2015



**American Registrar
of Management Systems ®**

Certifica que el Sistema de Gestión de Calidad Establecido en:
MAQ-REY S.A. DE C.V

Revolución No. 530, Col. Burócratas Del Estado, Monterrey, Nuevo León, C.P. 64380



ema
ORGANISMO DE CERTIFICACIÓN
ACREDITADO 65/09

Cumple con:
NMX-CC-9001-IMNC-2015

ISO 9001:2015

IAF 17 METALES BÁSICOS Y PRODUCTOS DE METAL FABRICADOS, NACE C25.50

El alcance de esta certificación incluye:

Procesos de maquinado de precisión de piezas metálicas para la industria en general, en los siguientes materiales: acero, aluminio, bronce, cobre, durabar, modular, nylamid, acetal y teflón.



Fecha de emisión:
08/May/2018
Registro: MRE180508.QMS
Fecha de expiración:
14/Abr/2021
Fecha primera emisión: 11/Nov/2009

Por el comité de certificación:





Production: 1st area

1950 ft² used at 65% of capacity



Second production área: 70 % of spacing free (1800 ft²). Dec, 2020.



New building: 2,580 (ft²) space free for new projects: Dec, 2020

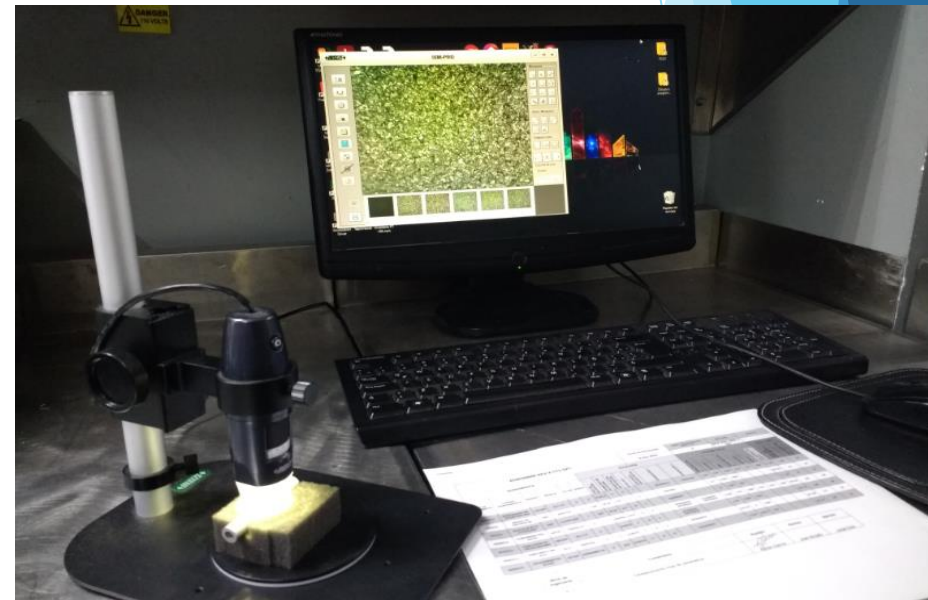
MAQ-REY

Laboratory



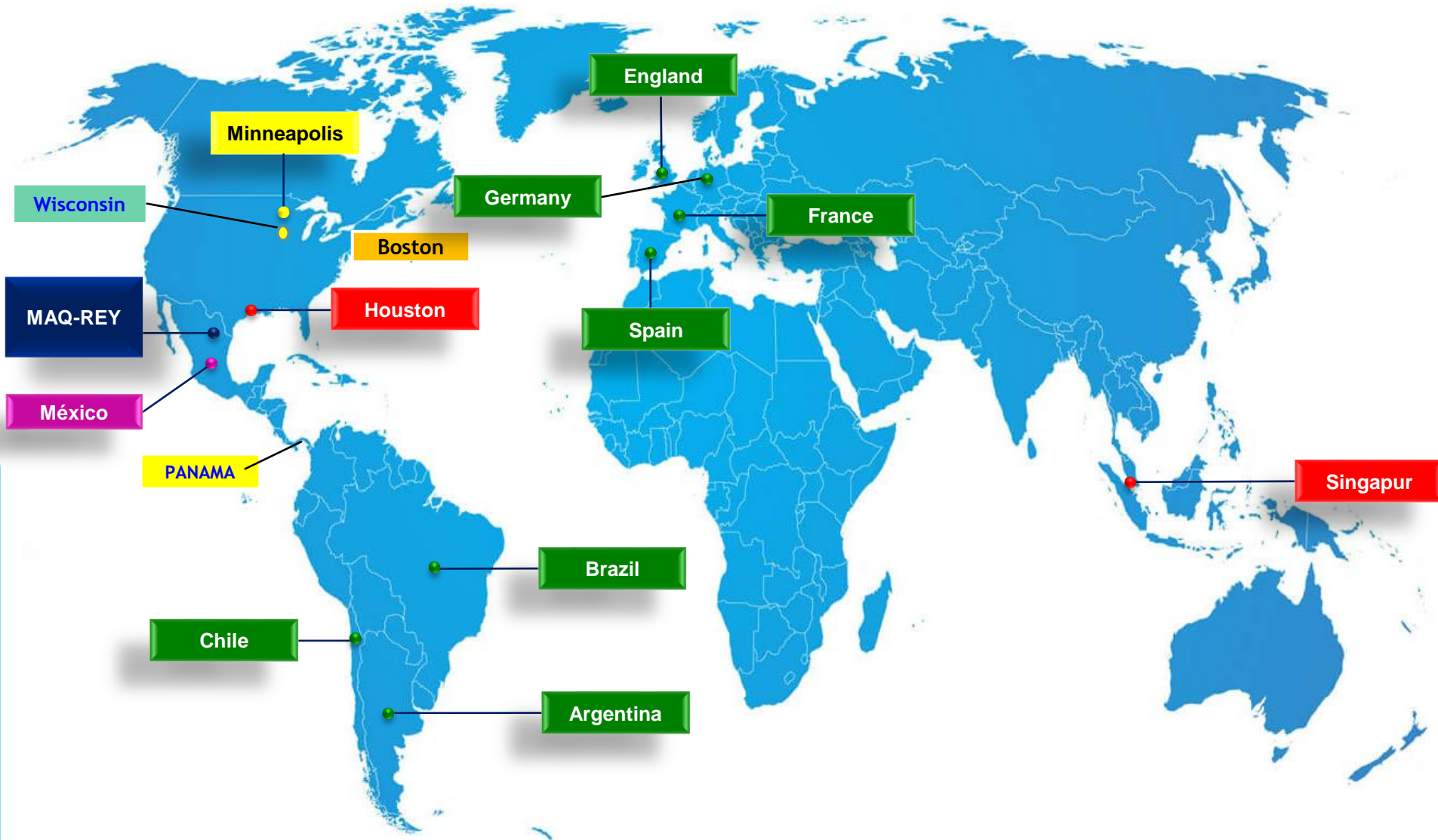
Quality control room

165 ft².



MAQ-REY

Maq-Rey around the world



- Digital optical comparator
- Digital Height Gauge
- Marbel (table)rectificated 16" x 32"
- Hardness tester
- Borematic (check until 9.000" for inside diameter)
- Engraving machine (traceability)
- Gauge makers , specialized on:
ACME Threads and Oil Threads



Complementary strategic process:

- Welding and coating applications as tungsten carbide
- Surfaces finishes as: Zinc, Electroless, Zinc Plate, Phosphatized, Black Oxide, Anodized, Galvanized, Casting ,etc
- Magnetic Particle Inspection
- Foundry
- Domestic and Foreign (USA) raw material suppliers.

*Financial capacity for equipment acquisition
in order to meet new projects requirements.*



- We have a CMM equipment on specialized room for measuring of complex geometries and provide precise measurements of objects for design, testing, assessment, profiling, and reverse engineering of our machined parts.

- (Zeiss, Duramax; maximum length in its axis X=500 mm, Y=500 mm; Z=500 mm).



- Vertical machining center 30 x 20 x 16 – Daewoo
- Vertical machining center 30 x 20 x 16 – Daewoo
- Vertical machining center 30 x 20 x 16 – Daewoo
- Vertical machining center 5-axis - Haas
- Turning center 21 x 48 Daewoo puma 300 (2 equipment)
- Turning center 21 x 21 Daewoo Lynx C (4 equipment)
- Turning center 21 x 21 Daewoo Lynx C (3 equipment)
- Turning center Lynx 220 LMSC sub spindle (1 equipment)

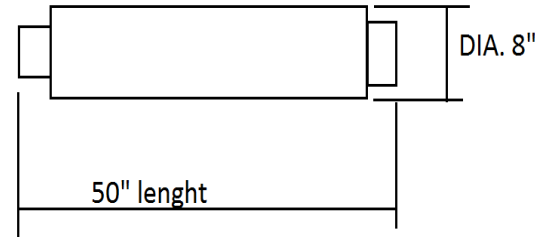


3 swiss Lathe CNC CITIZEN CINCOM model A20 & A32 (2)
equipped with bar-feeder of 3 meters for high production
runs

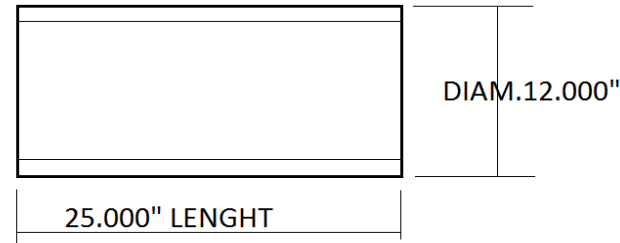


Maximum shaped dimensions that we can manufacture

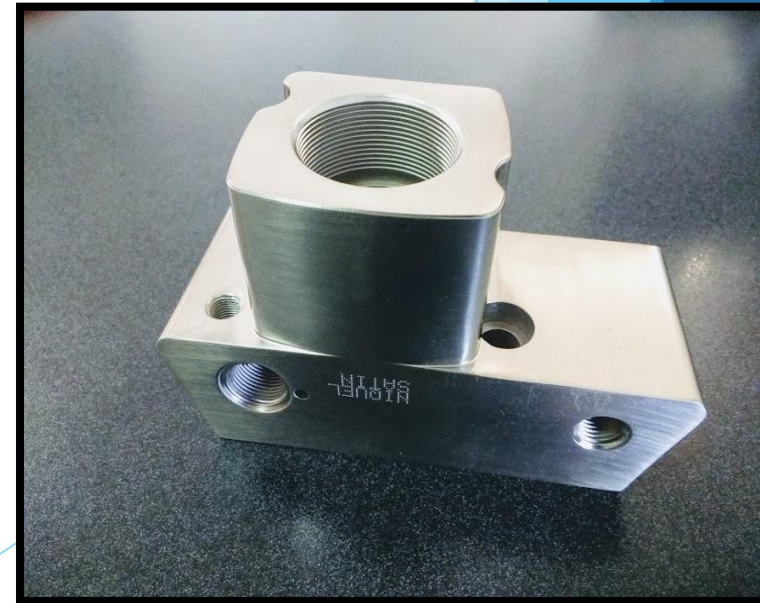
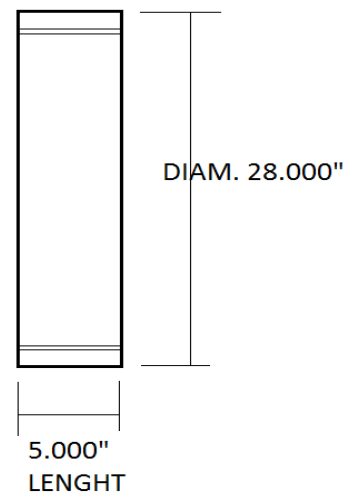
1.- Solid bar maximum
machining dimension.



2.- Pipe with internal or external
thread



3.- Rings with inner or external
thread .



Group of pieces developed in Maq-Rey supported by our foundry and coating partner.

- 1.- Casting model
- 2.- Casting
- 3.- Machining parts
- 4.- Precision Assembly

Materials commonly used:

- 1.- Aluminum 6061, 6005, 2024, Alloys, Casted
- 2.- Stainless Steel,, 303, 304, fatigue proof, alloy steel 4140, tool steel, Carbon Steel
- 3.- Bronze, Brass ,Copper
- 4.- Casted iron
- 5.- Engineering plastic.
- 6.- Ductile iron
- 7.- Titanium, Inconel



MAQ-REY

Surface finishes Quality



Plastic Protection Packaging

MAQ-REY

Packaging

C-TPAT SYSTEM



Parts packaged and ready to ship to USA