

PARKWAY

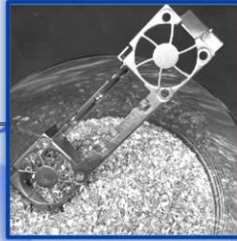
**HIGH
PERFORMANCE
POLYMERS**



**MACHINED
PLASTIC
SOLUTIONS**



**MAGNESIUM
THIXOMOLDING**



**THERMOPLASTIC
MOLDING**



**THERMOSET
MOLDING**



**AGRICULTURE,
TRUCK, OFF-ROAD**



INFRASTRUCTURE



AUTOMOTIVE



INDUSTRIAL



HEALTHCARE



**AEROSPACE &
ELECTRONICS**

Parkway Corporate Overview Presentation 2022

Company Overview

Leading North American supplier of molded product technologies

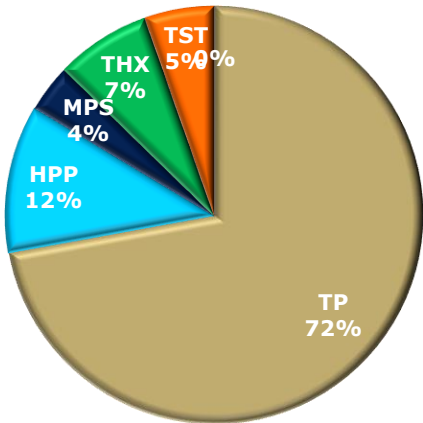
Founded 1946 in Cincinnati, OH
(9) North American Plants, Headquartered in Greenville, SC
2022 Projected Revenue: \$129M

Diversified Product Technologies

High Performance Polymer Molding
Machined Plastic Solutions
Magnesium Thixomolding
Thermoset Molding
Thermoplastic Injection Molding

Tooling, Assembly, Product Design, Supply Chain Management

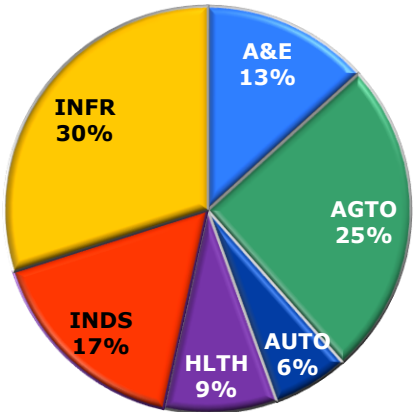
Product Mix



Targeted End Market Focus

Aerospace & Electronics	Agriculture, Heavy Truck, & Off-Road	Automotive
Healthcare	Industrial	Infrastructure

End Markets



Focused-Factory Operating Footprint

Asheville, NC	Saltillo, COA, MX	Atlanta, GA
Ft. Collins, CO	Seneca, SC	Loveland, CO
Greeneville, TN	Westminster, SC	Rockford, IL

(825+) Non-Union Employee Associates

A Stable, Trusted Supplier

Over 200 Active Customers with (31) \$1M+ Relationships in 2019
Consistent Long-Term Supply Relationships with Fortune 500 OEM clients
Adequate cash flow and financing for capital upgrades, growth and acquisitions

Company History

PARKWAY

Confidential – Not for External Distribution

Chapter 1 1946-1985

*Founding
Family
40 Years*



- Founded April 1946 by Edward Willig
- Joined by his sons Donald & Edgar and later their sons Gary & John, David, Ed, and Joe respectively
- Single Plant in Cincinnati, OH
- 1985 Revenue: \$7M, 40-yr AAGR \$175K/yr

Chapter 2 1986-2005

*Footprint
and
Product
Line
Expansion*



**PARKWAY
PRODUCTS, INC**



- Executive Leadership and Ownership transitioned to Non-Family Managers
- Aerospace market presence acquired
- Commercial Product Technology portfolio assembled organically and through acquisition
- Nine operations in 6 US states and Mexico
- 2005 Revenue: \$52M, 20-yr AAGR \$2.2M/yr

Chapter 3 2006-2014

*MBO,
Divisions
Formalized,
Aerospace
Divestiture*

PARKWAY
Aerospace & Defense



PARKWAY
Enterprise Molded Products



- Operated as two independent Divisions
- Recapitalized with Oxford Financial Group
- Each Division surpassed \$70M in 2013 revenue
- Aerospace & Defense divested July 2013
- 2013 Revenue: \$148M, 7-yr AAGR \$13.7M/yr

Chapter 4 2015 – Today

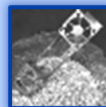
Technologies



HPP



MPS



THX



TP



TST

Operations



PARKWAY

End Markets



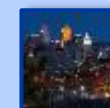
Agriculture,
Truck
& Off Road



Healthcare



Aerospace &
Electronics



Infrastructure



Automotive



Industrial

HIGH PERFORMANCE POLYMERS (HPP)



Wear, Chemical Resistance, Strength and High Heat Specialty Applications

Custom Injection Molding, Stock Shapes & Machined Prototypes

Torlon® PAI, PEEK, Ultem® PEI, PPS, PSU

THERMOPLASTIC MOLDING (TP)



192 Injection Molding Machines in NAFTA region, 17-1760T size

Insert Molding, Multi-shot, Overmolding and Structural Foam

All TP's & Compounds, 4 Operating Sites

MACHINED PLASTIC SOLUTIONS (MPS)



Precision High Performance Polymer Machining

Metal-to-Polymer Conversion, Low Friction, High Heat, Wear and Strength Applications

Torlon® PAI, PEEK, Ultem® PEI, Ryton®, ABS, Lexan

THERMOSET MOLDING (TST)



Compression, Transfer and Injection Molding 40 Machines, 50-500T size

Electrical, Structural, High Hardness and Flame Resistant Applications

Largest Custom Thermoset Molder in Mexico

MAGNESIUM THIXOMOLDING (THX)



Semi-solid Magnesium Injection Molding

Thin Wall, Light Weight, Fine Detail, EMI Shielded, Thermally Conductive, & Durable

Precision & economics of injection molding with properties of lightest structural metal

ASSEMBLY, FINISHING & FULFILLMENT



Low Labor Cost Country Assembly

Automated & Semi Automated, Pad Printing, Sonic & Vibration Welding

Extensive Program Transfer & LCC Repositioning Experience

TOOLING (IN-HOUSE & CONTRACTED)



Turnkey Design & Build, experience in 1 - 128 cavity construction

On-site Repair & Maintenance

Material & Process Technology Specialists at Focused-Factory Sites

End Market



**Agriculture,
Truck, Off-
Road**



Infrastructure



Automotive



Industrial



Healthcare



**Aerospace &
Electronics**

Application Area

ATV,
Construction,
Farm
Equipment,
Heavy Truck,
Lawn Care,
Personal
Watercraft,
Portable Power,
Snowmobile

Building
Networking
& Systems,
Electrical
Metering,
Electrical
Switching,
Gas
Metering,
Smart Grid,
Telecom,
Water
Purification

Electronics,
Vision Systems,
Fluid Handling,
Fuel Systems,
Interior
Controls,
Powertrain,
Suspension

Air-filtration,
Appliance,
Compressor,
Food
Processing &
Service,
Friction &
Wear, HVAC,
Textile,
Welding

Biotech/Lab
Equipment,
Diagnostic
Devices, Drug
Delivery,
Eyewear,
Imagery,
Robotics,
Surgical

Airframe,
Engines
Combat Gear,
Connectors,
Fuel Tanks,
Interiors,
Propulsion,
Missile,
Precision
Optical Gear,
Semi-
conductor
Equipment,
Weaponry

Products

HPP
MPS
THX
TP

TP
MPS
TST

THX
HPP
TP

HPP
MPS
THX
TST
TP

HPP
MPS
THX
TST
TP

HPP
MPS
THX



Production Operations Platform

PARKWAY

Confidential – Not for External Distribution



Atlanta, GA (ATL)



Loveland, CO (LOV)



Rockford, IL (ROC)



Saltillo, MX (SAL)

Plant	ATL	LOV	ROC	SAL	SAL	GRN	SEN	FTC	ASH	WES
Tech	HPP	THX	HPP/MPS	TST	TP	TP	TP	TP	TP	TP
Sq. Ft. (K)	50	32	30	65	45	175	90	24	35	60
# of Machines	14 + 10 CNC Centers	8 + 10 CNC Centers	11 + 33 CNC Centers	43	23	37	46	13	25	21
Range	17-300T	220-450T	40-360T	75-500T	60-500T	55-1760T	50-720T	35-400T	60-500T	90-1650T
<100T	5	0	6	8	2	2	3	2	5	1
100-250T	4	3	4	26	12	16	26	9	10	2
250-500T	5	5	1	9	7	10	13	2	10	7
>500T	0	0	N/A	0	2	9	4	0	0	11
ISO9001: 2015	X	X	X	X	X	X	X	X	X	X
UL	X			X	X		X	X		
IATF16949: 2015	X									
ISO14001	X									
Other Certifications	Q1, AS9100		AS9100					FDA, ISO13485		



Ft. Collins, CO (FTC)



Greenville, TN (GRN)



Seneca, SC (SEN)



Asheville, NC (ASH)



Westminster, SC (WES)

9 Facilities, 606K ft², 241 Molding Machines, 53 CNC Machining Centers

Benefits of HPP

- High heat resistance
- Excellent wear and friction resistance characteristics
- High stiffness & strength
- Strong chemical resistance
- Ideal for metal to plastic conversion



- 100+ years of HPP molding & tooling experience on staff
- Material selection & design support
- High production molding applications
- Stock & near net shapes
- Unmatched capacity of specialized material drying, mold heating, molding & post-curing equipment

NAFTA Market Leader in the injection molding of:

- Torlon® PAI
- PEEK
- Ultem® PEI
- PPA
- PPS
- Polysulfone



Benefits of MPS

- Wide range of high performance & engineering grade materials
- Complex part geometry and non-moldable part features
- Close tolerance requirements
- Low volume production and assemblies
- Cradle to grave program production



- Onsite Markforged X7 3D printer for design concept validation and custom fixturing
- In process Keyence Measuring Systems for optical measurements
- Automated machining cells for high volume machined plastic production
- AS9100 certified for Aerospace components and assemblies

Latest Inspection Techniques:

- Real-time SPC data collection
- Cpk Tracking
- CT Scanning



- Comparable process to plastic injection molding using semi-solid magnesium alloy

Thixo vs. Cast Metals

- Thinner walls (0.020"/0.5mm)
- 34% lighter than aluminum, 76% lighter than steel
- Cosmetic quality surface finish
- Lower porosity
- Tighter, more repeatable process
- Less energy consumed, no by-products

Thixo vs. Engineering Thermoplastics

- Thermally & electrically conductive
- Higher stiffness & strength
- EMI/RFI shielded without secondary plating
- Stability at higher temperatures
- Metallic aesthetics & end-user perception



Materials

- Polyester Compounds
- Epoxy Compounds
- Phenolic Compounds
- Melamine Compounds

Forms

- Bulk Molding Compound (BMC)
- Sheet Molding Compound (SMC)
- Granular / Pelletized
- Heavily Filled BMC Grades
Dough/Thick Molding Compound (TMC/DMC)

Processes

- Injection Molding (150-500T)
- Compression Molding (75-500T)
- Transfer Molding (75-250T)



- Injection/ compression/ transfer capabilities, 40+ presses under one roof
- Integrated thermoplastic, thermoset & assembly operation
- Mexico low cost country advantage





Processes

- Injection Molding
- Vertical Insert Molding
- Structural Foam Molding
- 2-Shot Molding

Capacity

- 100+ Molding Machines
- 17-1760 Ton Single Shot Injection Molding Machines
- 80-160 Ton 2-Shot Injection Molding Machines
- In-house engineering & tooling repair

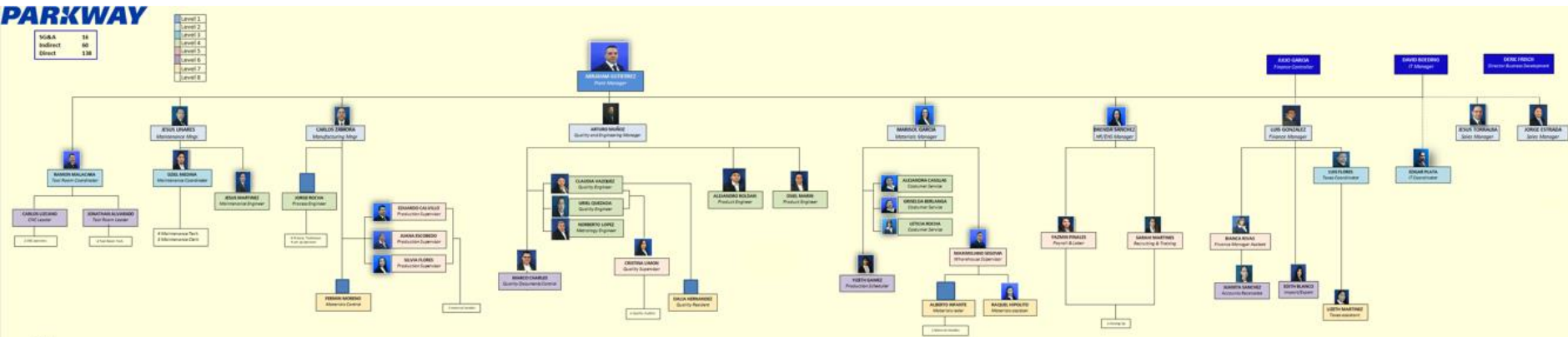


Parkway Saltillo Presentation 2022

Organization Chart

PARKWAY

Confidential – Not for External Distribution



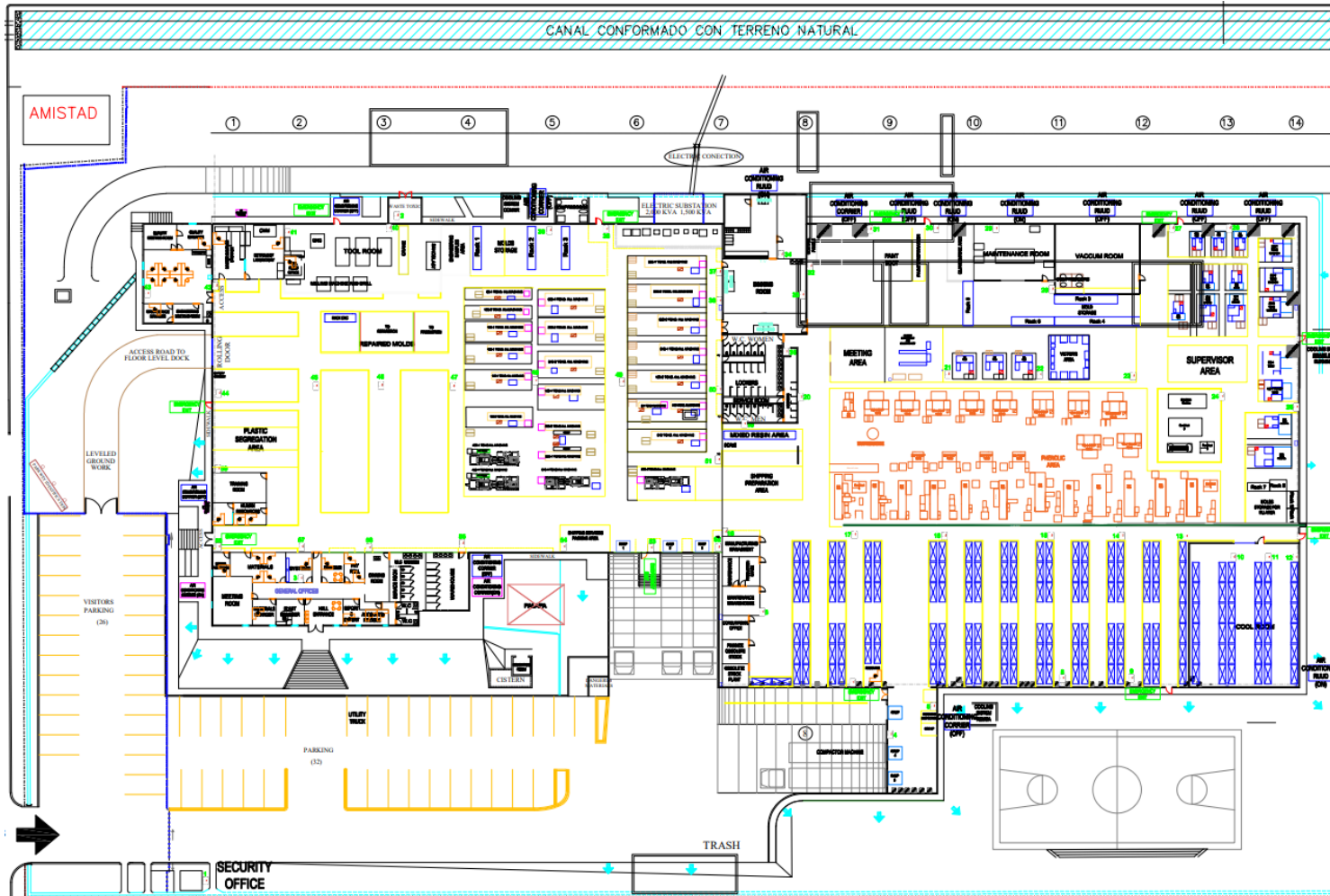
SG&A	16
Indirect	60
Direct	138

ISO 9001:2015



UL Certification





ThermoSet Machines:

(43) 75-500T

ThermoPlastic Machines:

(23) 60-500T
•ISO9001, UL

Building Construction:

80,000 ft²

Plant Lot:

110,000 ft²

Available Space

40%

What questions do you have for us?