



WHERE GREAT PRODUCTS TAKE SHAPE

Overview of Capabilities

WWW.TEKMARTIMS.COM

Company Snapshot

Revenue Growth 2013 to 2022

- Stable growth annually 2013 to 2018
- Weathered challenges in 2019-2020
- Financially stable

Markets Served

- 50% automotive*
- 20% appliances
- RV, Recreational (ATV), Electronics

Clients & Programs

- OEMS' and Tier One
- Healthy business distribution
- New 5 year programs -2020

Expansion

- Added 2 injection molding plants
- Purchased Power-Sonic Tijuana 2022 & Brenta in 2020 Juarez

TIMS Tijuana Plant - 80% automotive with 60% open capacity.

TIMS Facilities



- Juarez main plant 350,000 Sq. Ft. - Texas Border
- Juarez satellite plant 30,000 " " (Brenta)
- Tijuana satellite plant 140,000 " "
- Tijuana satellite plant 60,000 " "
- 60% available capacity in Tijuana



- 132 Injection machines ranging from 100 to 3000 tons.
- Fully automated material distribution system.
- 9 Silos with capacity of over 1.5M pounds.
- Fully automated robot solutions & multiple 30 tons overhead crane.

TIMS Capabilities

Injection Molding And Assembly

- ✓ Large parts
- ✓ Gas assist
- ✓ Insert molding
- ✓ Pad Printing
- ✓ Hot stamping
- ✓ Ultrasonic welding
- ✓ Testing

Tool build design and management

- ✓ In house Design
- ✓ Project Management
- ✓ DFM & MOLD Flow
- ✓ China Eng. Office

Vacuum Metallization and Painting

- ✓ Al coating for lighting
- ✓ 2 layer liquid paint up to 90% gloss

Metrology Lab and Very large on site Tool Room

- ✓ CMM
- ✓ Color, Gloss, Harmony measuring
- ✓ Laser scanning
- ✓ Packaging validation
- ✓ Rapid ECR

Certification : IATF16949, ISO9000, CTPAT,

Over 128 Injection molding machines. between 100T to 3000T. (*open capacity*)

Stable workforce and in-depth management expertise

TIMS Solutions Summary



Plastics Molding & Assembly

2K/3K/4K lenses for automotive lighting products, Gas Assist
Insert Molding, Pad Printing, Ultrasonic & Vibration Welding
Assemblies – EV Chargeport for EV



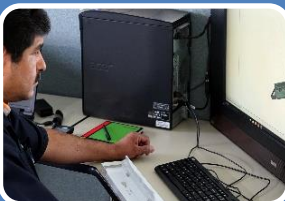
Paint – Semi and High Gloss Capabilities

- Ionized Cleaning
- 3 Paint Booth in line - Base Coat and Clear Coat
- Automated and Manual process
- Controlled Environment – Prevent contamination



Vacuum Metallization (vapor deposition) – 3 Machines

- Metallized taillight and headlight housing.
- Fully automated process
- Potential Other Applications – glass, metal, ceramics



Mold Design, Construction & Product Development

- In-House Engineering –Mold Design DFM, Mold Flow
- Project Management, Engineering Office Shenzhen
- Tooling , Fixtures & Gages Design
- Packaging Analysis and Design

TIMS Injection Machines

Tonnages	Juarez			
	Juarez Main Plant	Satellite Plant 2	Tijuana Satellite Plant 3	Tijuana Satellite Plant 4
Less 100T	1			2
100-199T	12	2	4	3
200-299T	4	1	0	3
300-399T	8	2	0	3
400-550T	10	3	3	7
600-699T	5		1	3
700-799T	7		1	1
800-899T	2		3	1
900-1000T	4		0	
1100-1500T	10	1	8	2
1600-2000T	3		2	
2200-3000T	3		1	2

Open
Capacity

Vacuum Metallization

- Fully automated production process controlled by a state-of-the-art IPC system.
- Large chamber and optimized for larger parts.
- Coating plastic, metal, glass, and ceramic parts.
- High throughput & quality.



Chamber Size(w/h)
1800mm X 2000M
71"x 79"



Semi-Automated Paint Line

- Paint cabin with air injection controlled filters.
- Manual paint application booths.
- Waterfalls curtains for overspray extraction.
- Water and solvent capabilities.
- 150 feet aerial conveyor.
- Ionized air cleaning.



Assembly and Secondary operations

Assembly and sub-assembly of component parts:

- Performing inspections
- Fastening
- Functional tests
- Labeling
- Quality control
- Packaging
- Preparation for final use

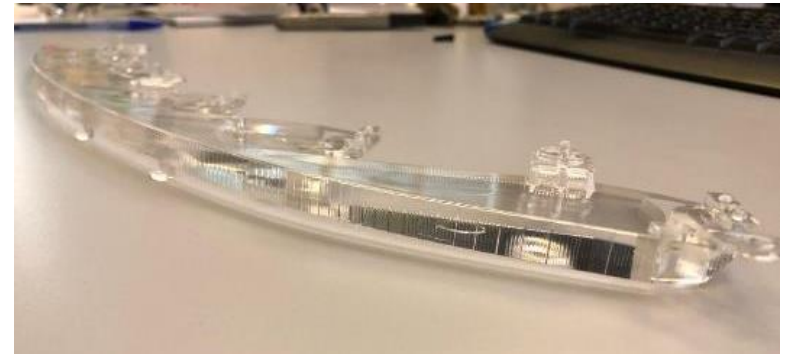
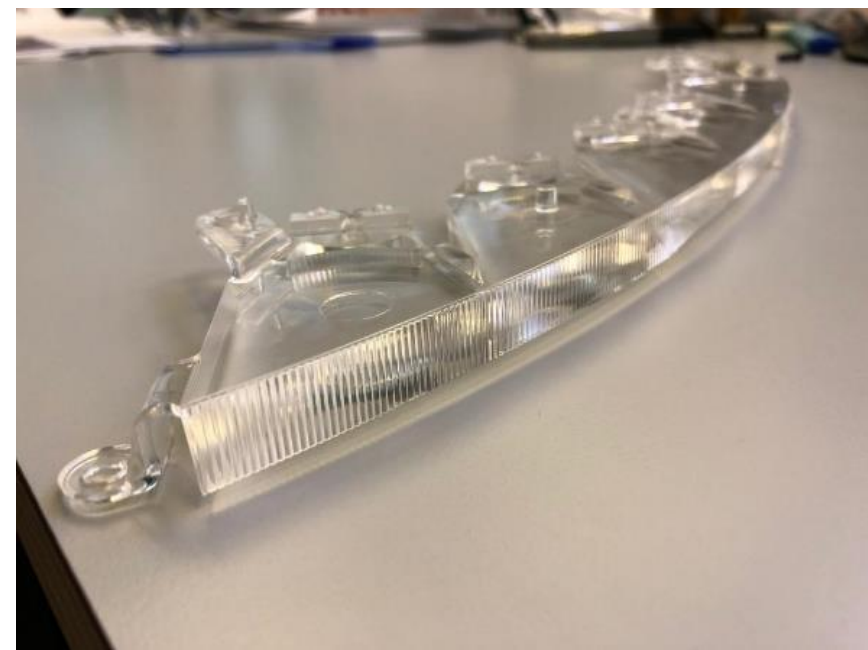
Secondary operations

Pad printing - Heat transfer - Hot stamping

Ultrasonic welding - Vibration welding



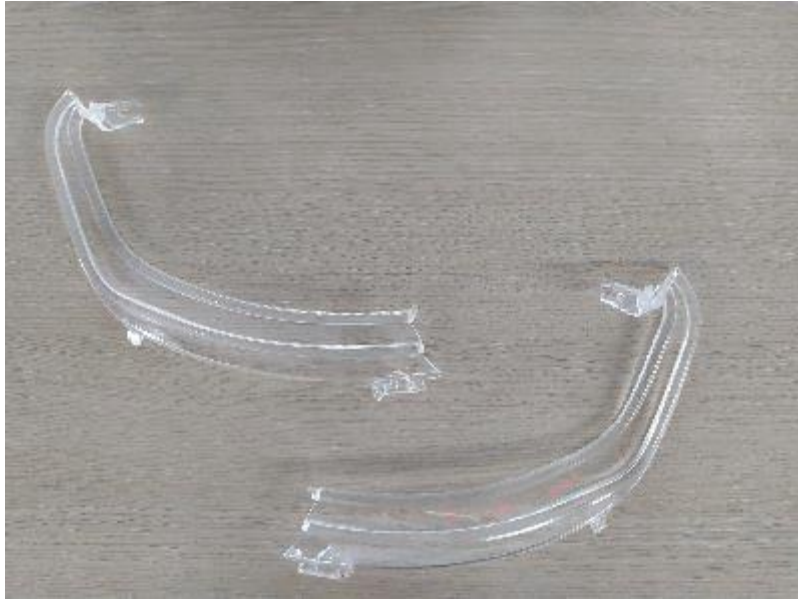
Dedicated Facility for Light guides in Juarez



JEEP COMPASS 2021 HL blade – production in TIMS-3



Dedicated Facility for Light guides in Juarez



**JEEP COMPASS 2021 HL light guide and
inner lenses RL**

Tool Maintenance Capabilities

- EDM, CNC, horizontal & vertical milling machines.
- 3 air cranes with capacity up to 30.
- Tig and micro welding.
- Heat treatment and hardness tester.

Daily Preventative - maintenance at machine level, cleaning, visual inspection of inserts, movable parts and venting.

Monthly Preventative –repair and replace mold parts.

Corrective Maintenance - ability to rebuild inserts & change Hot Runner configuration.

Engineering Changes - Ability to analyze & propose ECN for various applications.



Quality Systems

Manufacturing, 5'S, Kaizen, PDCA, DMAIC.

World Class

Process Control.

APQP, PPAP, FMEAS, CP, SPC, IQ, OQ,
PQ Validations Protocols for Medical industry.

Document and Data Control.

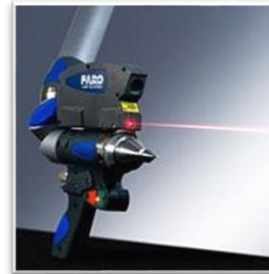
ISO/9000 – ISO/TS 16949 /VDA

Quality and Metrology Lab – Fully equipped

- Heat deflection load (HDT)
- VICAT softening temperature (VSP)
- Melt Flow Index
- Tensile strength
- Resistance Test
- Torsion Test
- Flexion-torsion Test
- Impact Test
- Flammability Test
- Dimensional Metrology
- Roughness surface
- Spectrophotometer (color and appearance)



The deflection temperature



Faro Arm EDGE



Fluorescence Spectrometry



Color Harmony Room

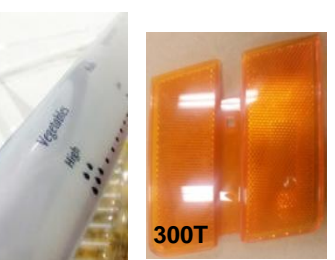


CMM 3D accurate measurements

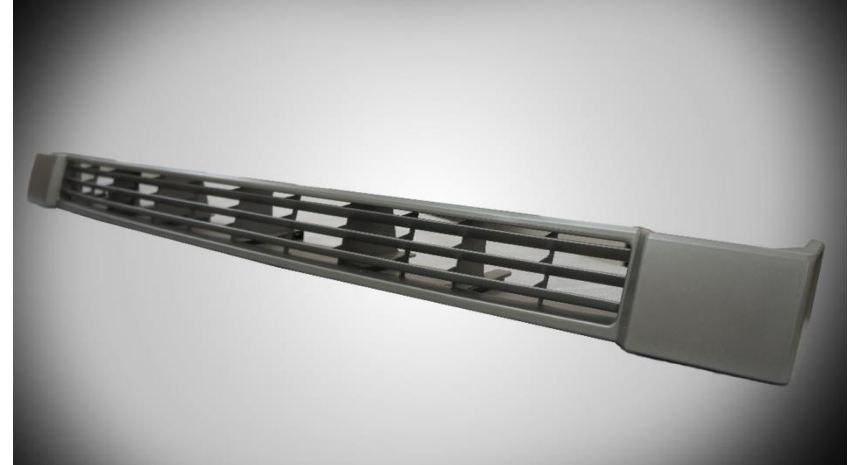


OGP Smartscope
Fast & accurate measurements
for small parts

Snapshot of TIMS Products



TIMS Automotive Parts 1/2



TIMS Automotive Parts 2/2



TIMS Automotive Parts 2/3



TISM Contact

TIMS Contact Information

Contact us to learn more about manufacturing possibilities.

Thank you

Bernardo Castro /Sales/Engineering Manager

bernardo.castro@tekmartims.com

Ph:+52 656-379-1167

+1 (915) 307-9103

sales@tekmartims.com

<http://www.tekmartims.com/>



@TIMSMEXICO