



---

MANUFACTURE  
METAL PARTS & ASSEMBLIES

**01**

---

**SYVASA**

WHO WE ARE?

**02**

---

**SERVICES**

OUR OFFER

**03**

---

**PORTAFOLIO**

OUR EXPERIENCE





01

**SYVASA**

WHO WE ARE?





## Who we are?

Mexican enterprise with more than **40 years** of experience, manufacturing metal pieces, mainly using the following materials:

- Carbon Steel
- Stainless Steel
- Aluminum
- Galvanized steel
- Copper
- Brass, etc

• Certified under the norm **ISO 9001 & ISO 14001.**



# Who we are?

Campesinos 201, Granjas Esmeralda,  
09810, Mexico City.

Total area: 5,267.11 m<sup>2</sup> / 56,694.71 ft<sup>2</sup>

Production area: 3510.74 / 37,789.28 ft<sup>2</sup>

Maneuvering area: 934m<sup>2</sup> / 3064.3 ft<sup>2</sup>



**WHITE COLLAR**

40



**BLUE COLLAR**

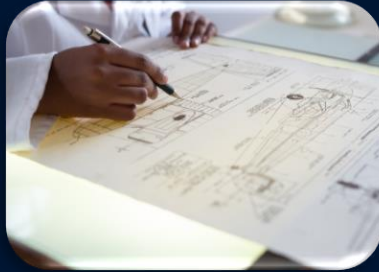
100



# OUR SERVICES



**ENGINEERING**



**PROTOTYPES**

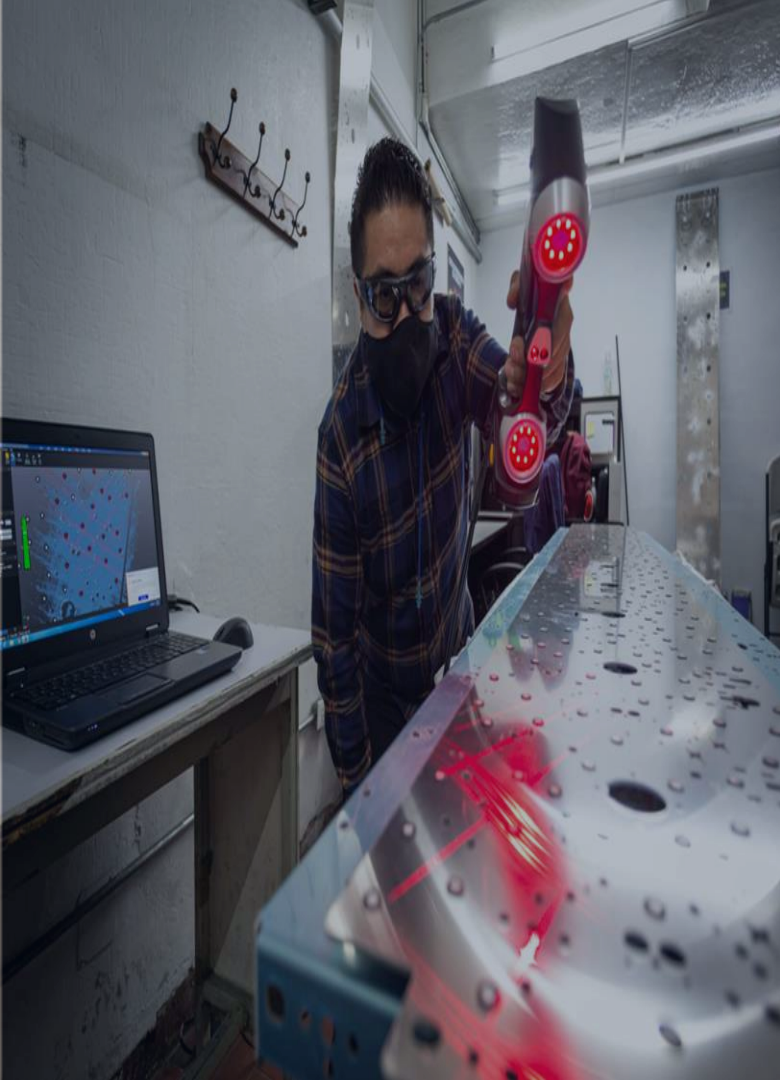


**MANUFACTURING**



**VALUE ADDED**





## ENGINEERING

- Our staff is made up of 10 engineers in the process and continuous improvement department. Within our services we can do reverse engineering with the 3d scanner that is also useful for high precision dimensional reports.





## PROTOTYPES

- Our NPI (New Product Introduction) area is in charge of manufacturing the prototypes as well as all the useful information for the start of production, it also produces poka yokes and devices to ensure the best manufacturing practices.





## VALUE ADDED

- \*Double Sided foam tape and EPDM
- \*Pieces assembled with glass, wood, vinyl, etc.
- \*Different processes that generate value to metalworking manufacturing

# OUR PROCESSES



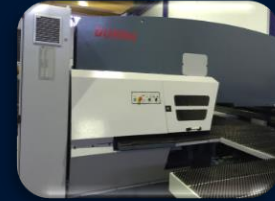
**LASER CUT**



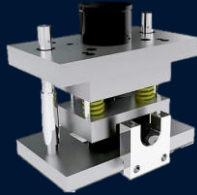
**SHEAR**



**BENDING**



**PUNCHING**



**STAMPING**



**WELDING**



**PAINTING**  
(OUTSOURCING)





# MACHINERY

## 2 LASER CUTTING

CO2 - 4KW  
Fiber Laser-1KW

## 6 STAMPING

60 to 250 TONS

## 3 PUNCHING

30 to 50 TONS



# MACHINERY

**10 BENDING**

60 to 400 TONS

**3 SHEAR**

5 METERS LONG & 5/8"  
CAPACITY

**25 WELDING**

MIG / TIG / SPOT WELDING



# MARKET SECTORS WE SERVE

---

OUR FLEXIBILITY ALLOWS US TO MAKE  
ALMOST ANY METAL PART OR ASSEMBLY

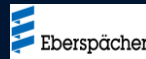
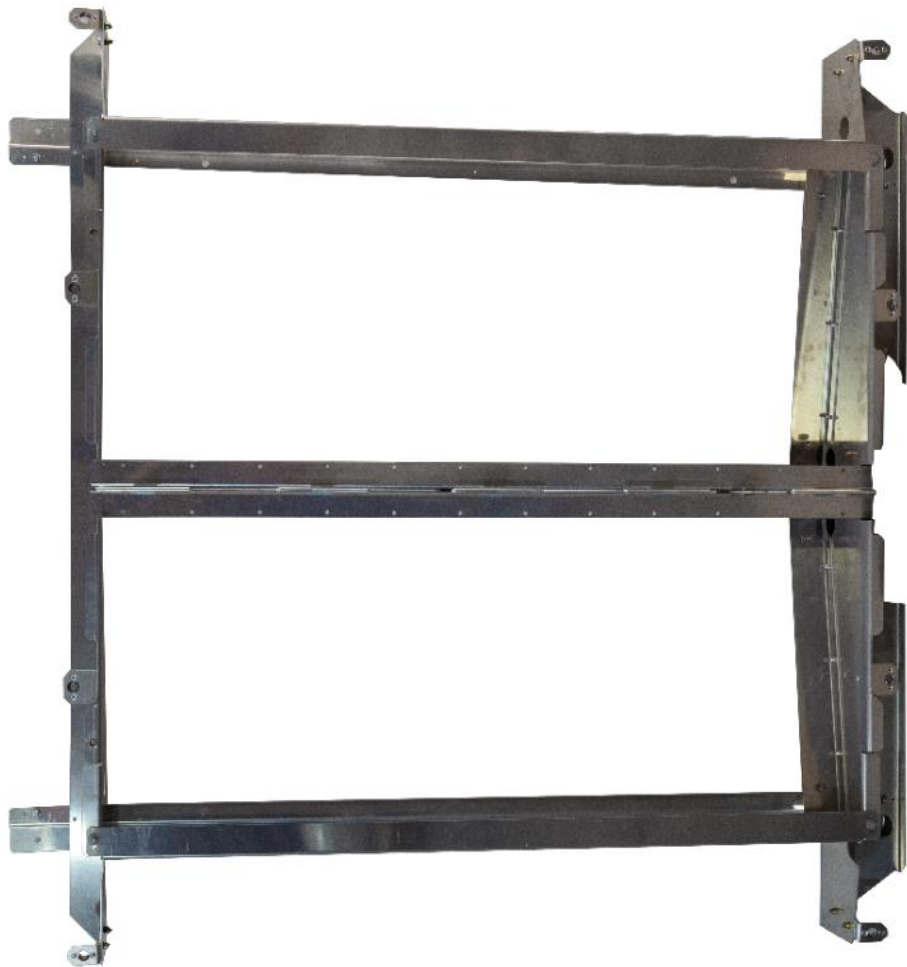




## BUSES & TRUCKS (TIER 1)

Abatible steps, tire carriers,  
laminated panels, chassis  
supports, toolbox, etc.





## BUSES & TRUCKS (TIER 2)

Metal mounts for  
entertainment systems,  
Automotive HVAC units.





SIEMENS  **ABB** 

## ELECTRICAL

Cabinets, Brackets, grates,  
panels, copper parts, etc.







# POWER SYSTEMS

Metal parts for power  
generators.





GUNDERSON CONCARILL  
SUSTAINABLE GUNDERS

CAF



## RAILWAY

Panels, moldings, gratings,  
structures, channels, parts for  
door devices in freight cars.

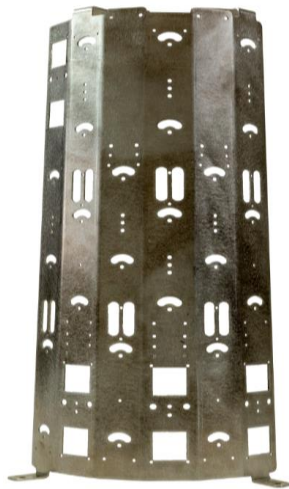
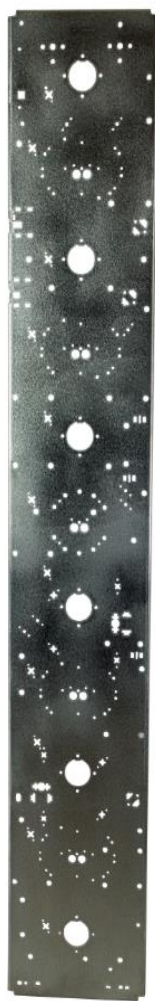
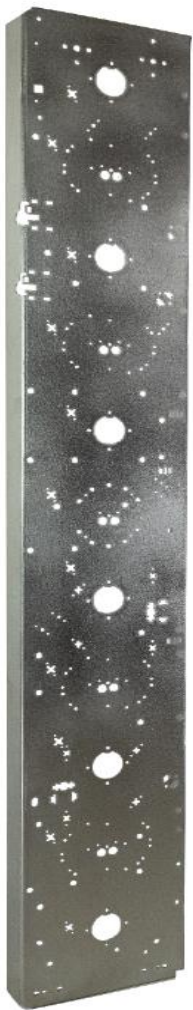




## TELECOMM

Anti-seismic server racks, trays,  
 housings, cabinets, etc.





# ANTENNA

Reflectors.







KONE

## ELEVATOR

Brackets, cabinets and housings.



# Cabinets for ticket vending machines



## TICKET DISPENSERS

Cabinets for ticket vending machines.





## URBAN FURNITURE

Bus stops, advertising furniture, benches, etc.





## **CABINETS & LOCKERS**

Custom cabinets & lockers.







# CABINETS & LOCKERS

Custom cabinets & lockers





# OFFICE FURNITURE





## BUNK BEDS





# DISPLAYS





# CUSTOM FURNITURE

Grills, tables & accessories







# SANITIZING STATIONS

Sanitization stations with advertising.





## SANITATION FURNITURE

Mobile hand washing stations.



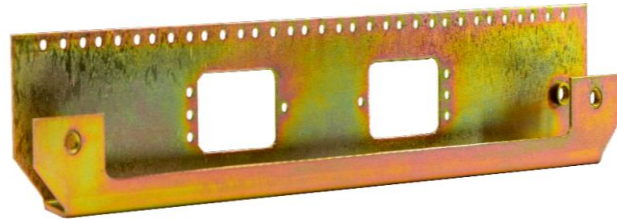


## OTHERS

Give us your project and we will manufacture it.



# OUR QUALITY



We verify our pieces or assemblies with a high precision scanner to provide dimensional reports.

---

# ASSEMBLIES



Our welders are certified under AWS standards.





---

# IMPORT & EXPORT



We have IMMEX program and the ability to import or export all over the world.



---

Thank you for your attention;

**VISIT US AT**  
**www.syvasa.com.mx**



# CONTACT US

---

Cynthia Reséndez: [resendezmc@syvasa.com](mailto:resendezmc@syvasa.com)

Alfonso Reséndez: [resendezv@syvasa.com](mailto:resendezv@syvasa.com)

[www.syvasa.com.mx](http://www.syvasa.com.mx)

