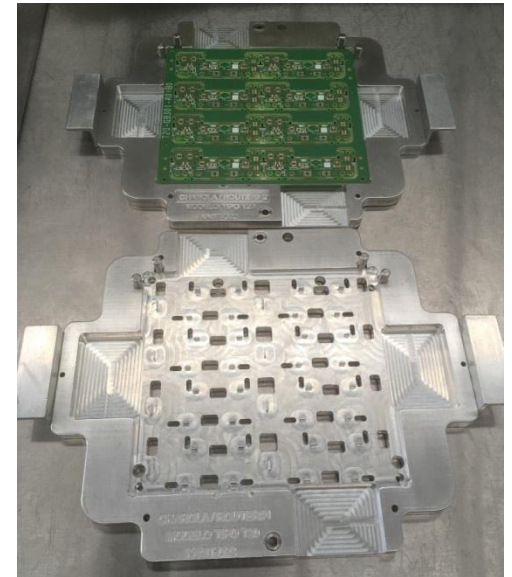
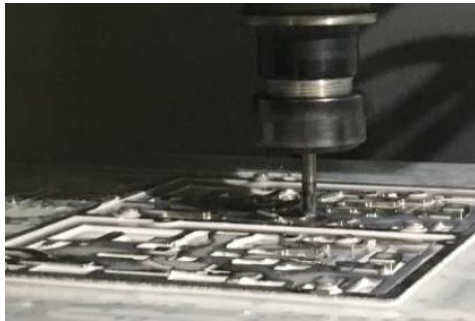




Company Profile

Kyosha de Mexico, S.A. de C.V.



November 14, 2022

Kyosha de Mexico, S.A. de C.V.

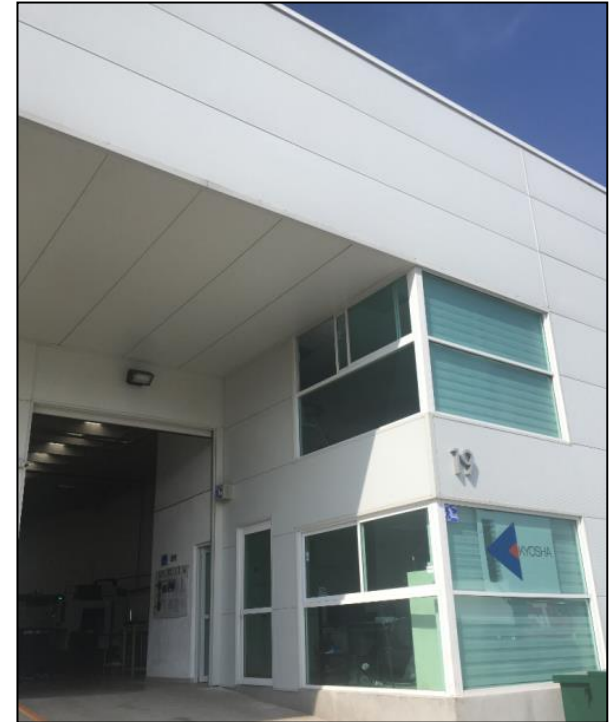
—A Group Company of Kyosha Co., Ltd.—

Contents

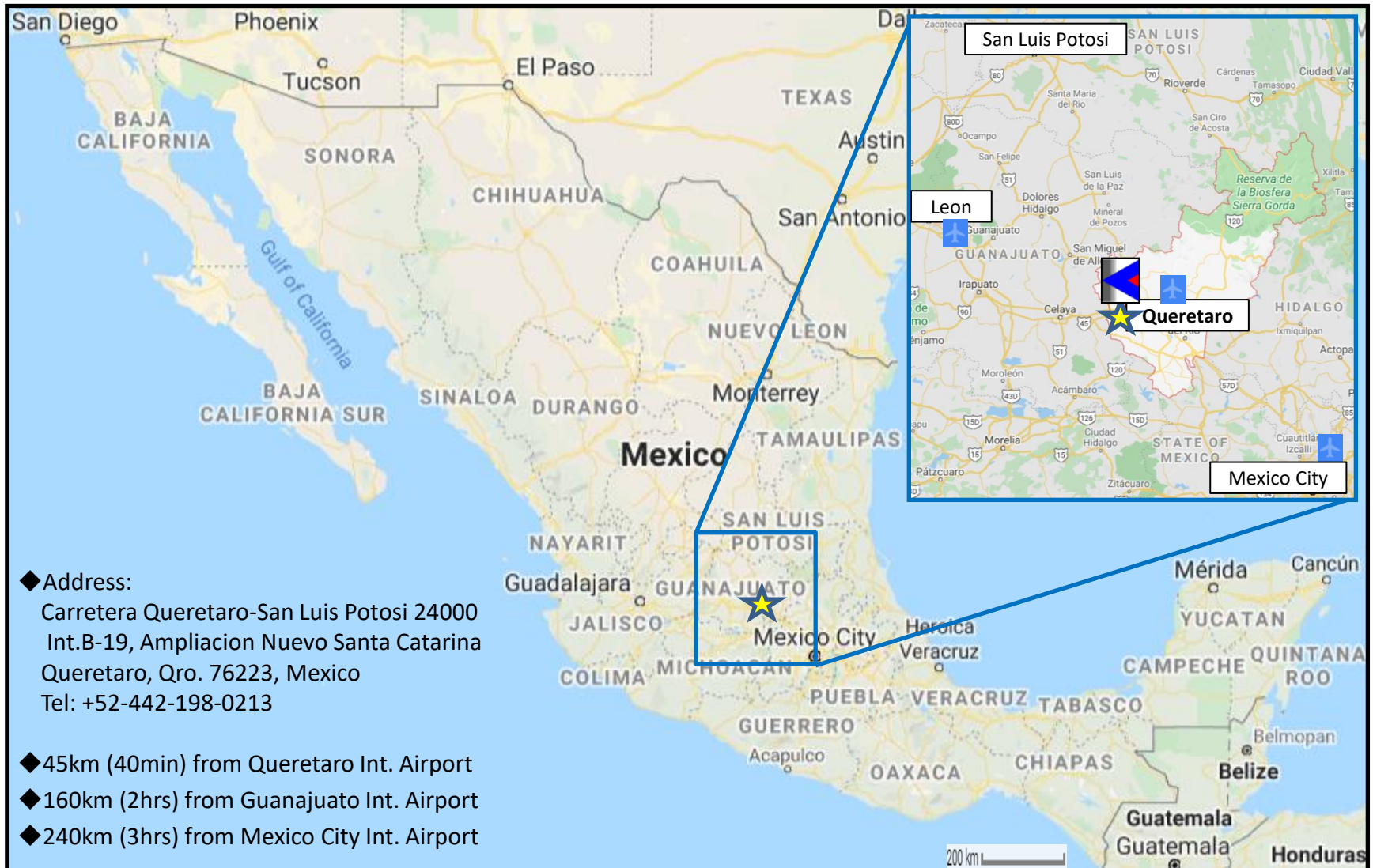
1. Company Information
2. Location
3. Equipment & Capability
4. Organization
5. Manufactured Samples
6. Corporate Company Information
7. Global Locations

1. Company Information

- ◆ Name: Kyosha de Mexico, S.A. de C.V.
- ◆ Origin: Kyoto, Japan
- ◆ Founded: May 13, 2016
- ◆ Factory: June 17, 2019 in Queretaro, Qro.
- ◆ Core Business: 1. Fabrication of Reflow/Flow pallets, Routers, & Other jigs
2. Import, Delivery, & Quality support for PCB business in Mexico
- ◆ Capital: \$19,990,000MXN
- ◆ Employees: 10 (as of June 1, 2022)
- ◆ Web: www.kyosha.co.jp/en



2. Location



3. Equipment & Capability

◆ Equipment:

- CNC machine (4, HAAS)
- Lathe CNC machine (1, HAAS)

◆ Production Category:

- SMT pallet (Reflow)
- Dip & Selective pallet (Flow)
- Routers
- Inspection Jigs
- Components such as Pins, Screws, Handles, etc.

◆ Material:

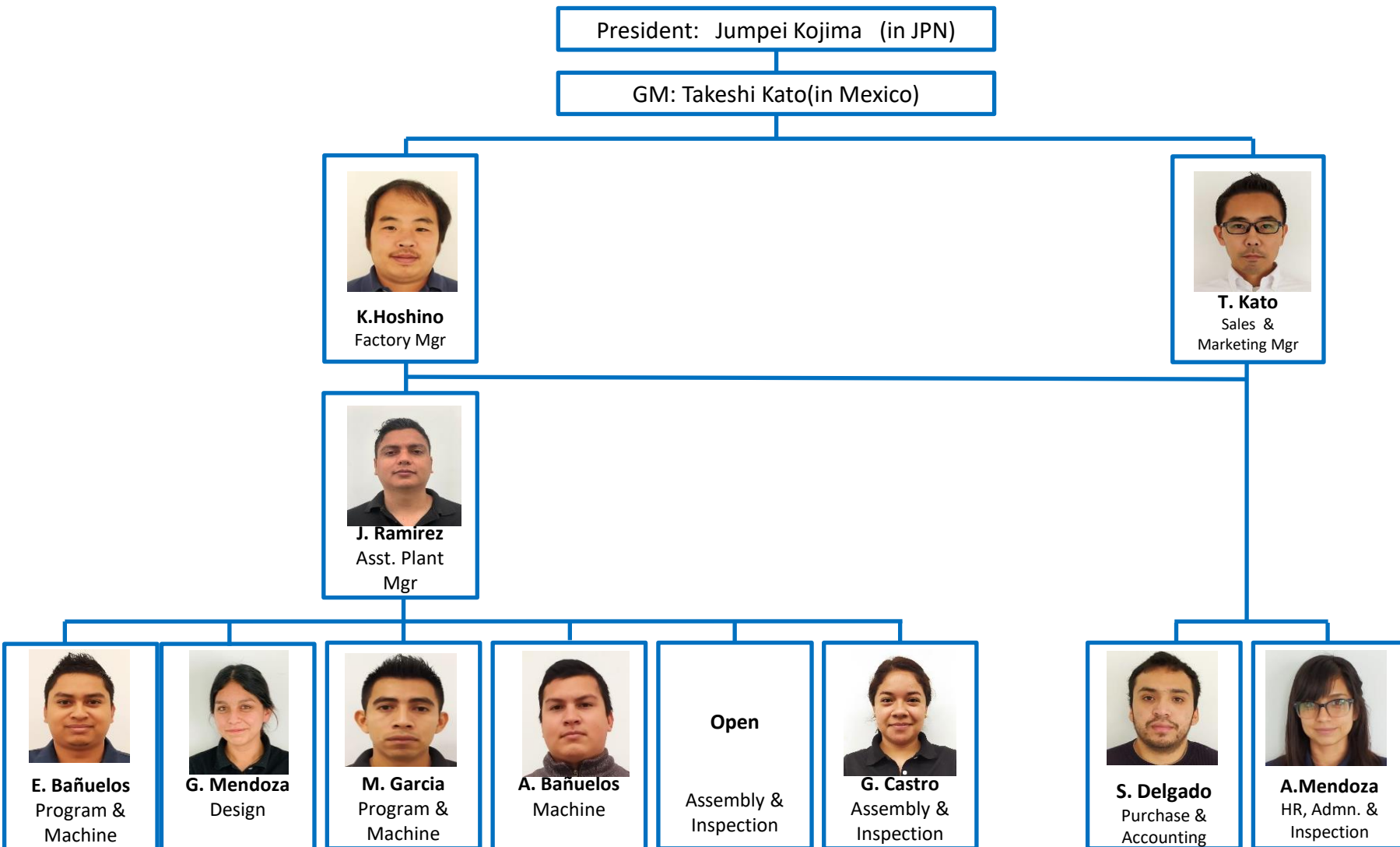
- Glass+Epoxy (Ricocel, Durostone, Durapol, G10) 1.6mm and up
- Alm (5052, 6061) 3mm and up
- Titanium

◆ Capability:

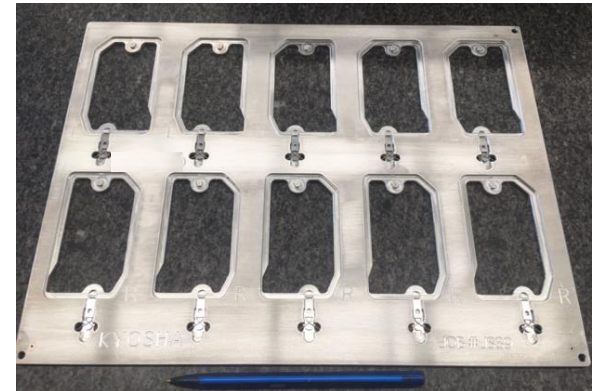
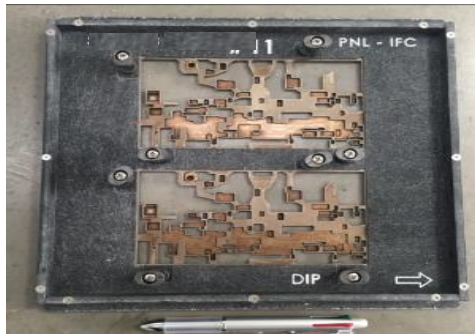
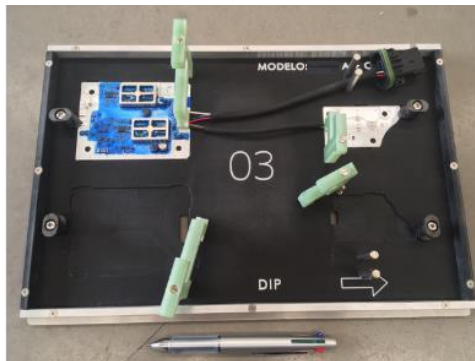
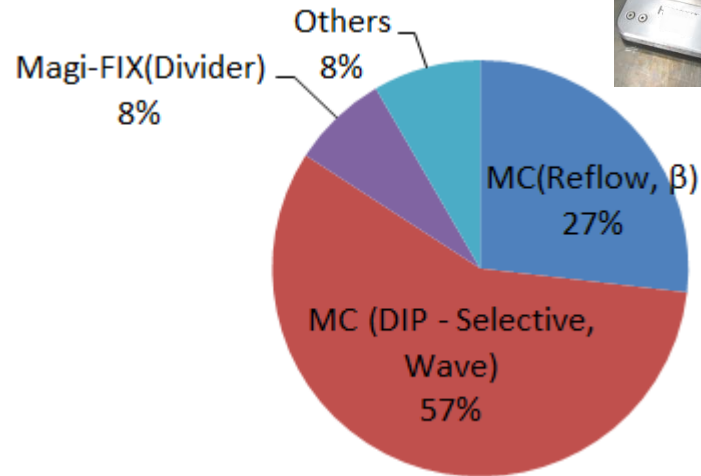
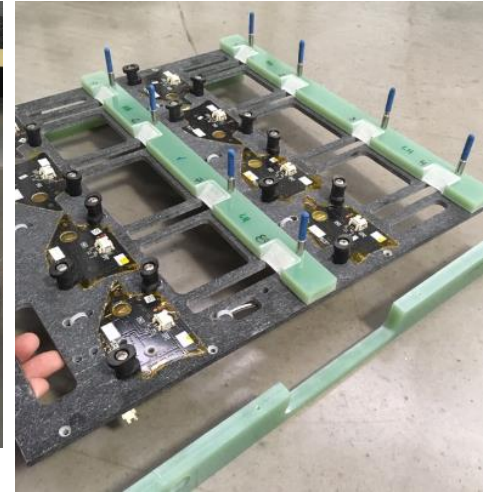
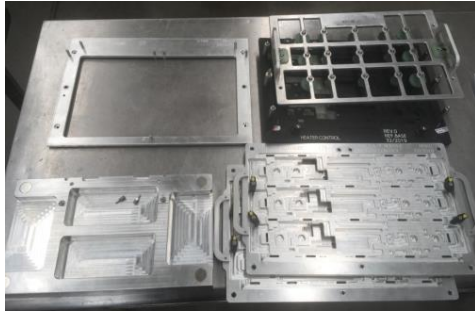
1. Accuracy $\pm 0.1\text{mm}$ (Partially 0.05)
2. Size up to 700mm
3. Low(1pc) ~ High(100+) quantity
4. Overnight express service



4. Organization



5. Product Category



6. Corporate Company Information

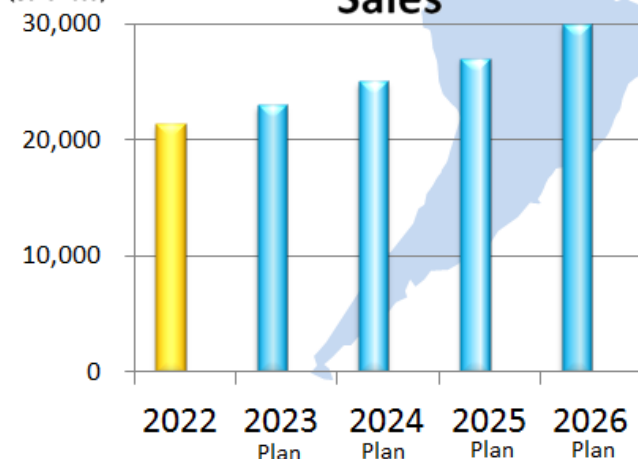
Company Name	KYOSHA CO., LTD.
Head Office	300 Morimurahigashi Kumiyama-cho Kuse-gun Kyoto, Japan 613-0024 Tel 075-631-3191(Main) Fax 075-631-7761
Representative	President : Kazuto Kojima
Establishment	May-1951
Incorporation	February-1959
Core Business	<ul style="list-style-type: none"> ■ Manufacturing / Sales of Printed Wiring Boards (PWB) ■ Manufacturing / Sales of Carrier Jigs (JIG)
Listed Exchange	Standard Market [Securities Code 6837]
Capital	1,102 million yen (Aprx.US\$8.48M, 1USD=130yen)
Number of Employees	Worldwide: 1,352 (as of March 31,2022)
Consolidated Business Results	The fiscal year ending March,31 2022 ■ Sales:21,337 million yen (US\$164M) ■ Operating Profit: 478 million yen (Aprx.US\$3.68M)

Subsidiary Company

- Kyosha Hong Kong Co., Ltd.
- Guangzhou Kyosha Circuit Technology Co., Ltd.
- Guangzhou Kyosha Trading Company
- Kyosha North America, Inc.
- Kyosha Thailand Co., Ltd.
- Kyosha Malaysia Circuit Technology Sdn.Bhd.
- PT. Kyosha Indonesia
- Kyosha Vietnam Co., Ltd.
- Kyosha de Mexico, S.A. de C.V.
- Sanwa Electron Co., Ltd.

(JPY M)

Sales

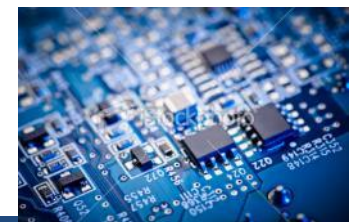


7. Global Locations





KYOSHA Group Company Profile



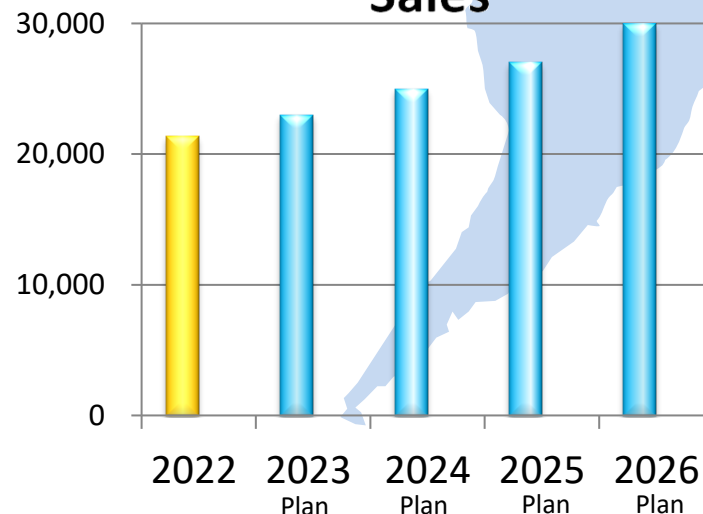
Company Name	KYOSHA CO., LTD.
Head Office	300 Morimurahigashi Kumiya-machi Kuse-gun Kyoto, Japan 613-0024 Tel 075-631-3191(Main) Fax 075-631-7761
Representative	President : Kazuto Kojima
Establishment	May-1951
Incorporation	February-1959
Core Business	<div>■ Manufacturing / Sales of Printed Wiring Boards (PWB)</div> <div>■ Manufacturing / Sales of Carrier Jigs (JIG)</div>
Listed Exchange	Standard Market [Securities Code 6837]
Capital	1,102 million yen
Number of Employees	Worldwide: 1,352 (as of March 31,2022)
Consolidated Business Results	The fiscal year ending March,31 2022 <div>■ Sales:21,337 million yen</div> <div>■ Operating Profit: 478 million yen</div>

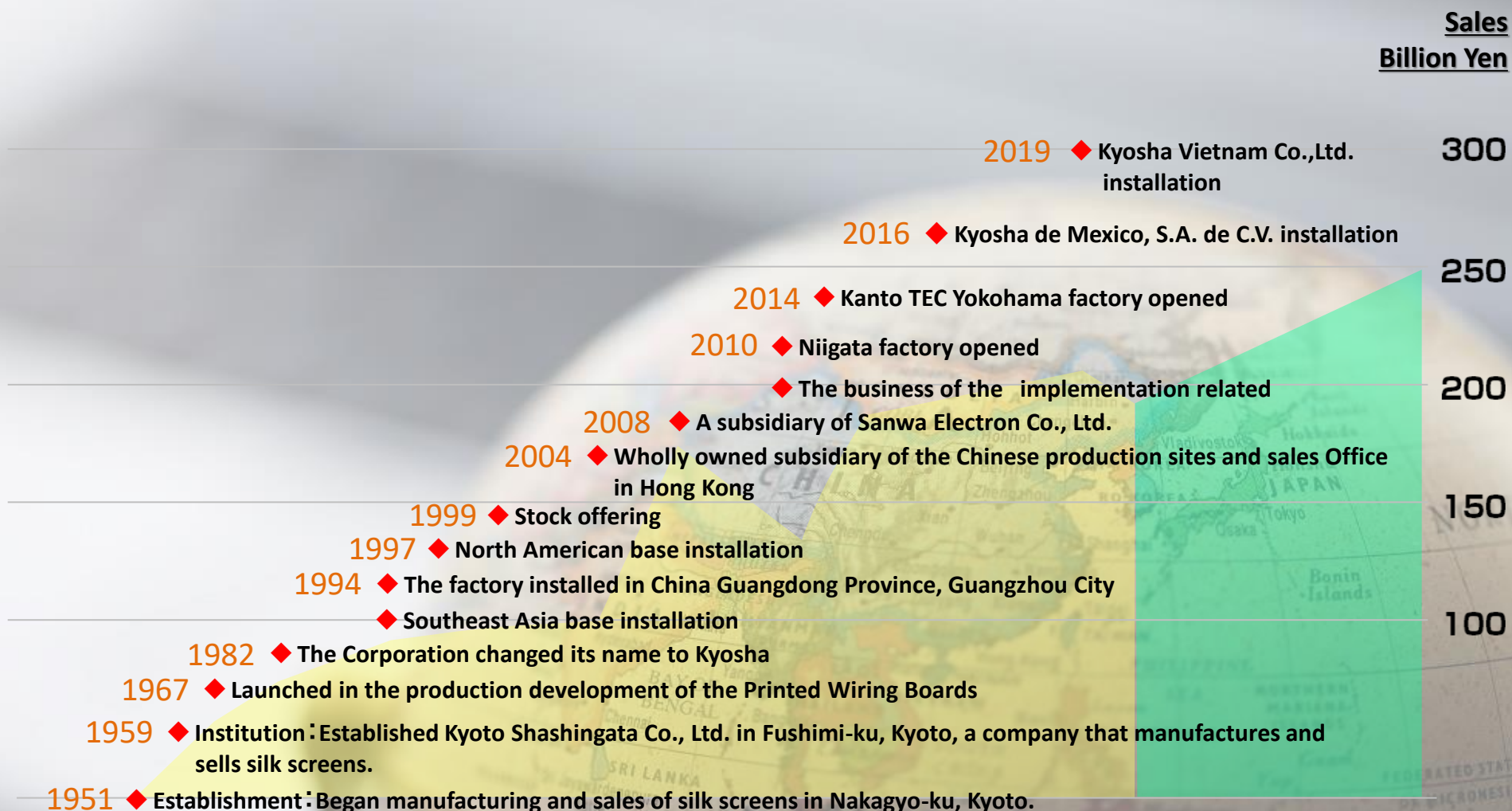
Subsidiary Company

- Kyosha Hong Kong Co., Ltd.
- Guangzhou Kyosha Circuit Technology Co., Ltd.
- Guangzhou Kyosha Trading Company
- Kyosha North America, Inc.
- Kyosha Thailand Co., Ltd.
- Kyosha Malaysia Circuit Technology Sdn.Bhd.
- PT. Kyosha Indonesia
- Kyosha Vietnam Co.,Ltd.
- Kyosha de Mexico, S.A. de C.V.
- Sanwa Electron Co., Ltd.

(JPY M)

Sales





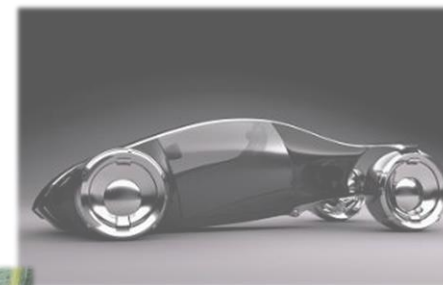
By focusing on heat dissipating boards
and environmentally conscious products as our core,
we provide total solutions
from “PWB” to “EMS and JIG”.

*PWB=Printed Wiring Boards

*JIG=Carrier Jigs

PWB
Business

EMS and JIG
Business



Printed Wiring Boards(PWB) Business

Multi-layered
PWBs

Double-sided
PWBs

Through-hole •
Non-through-hole

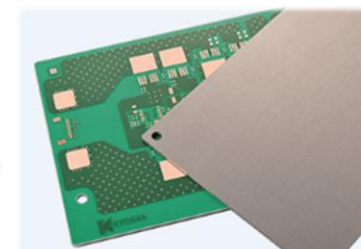
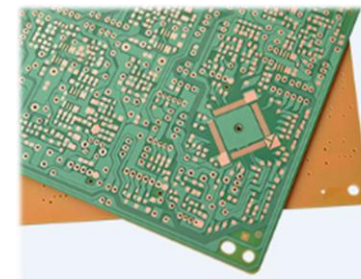
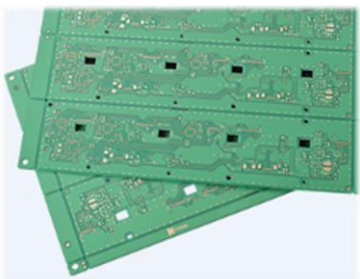
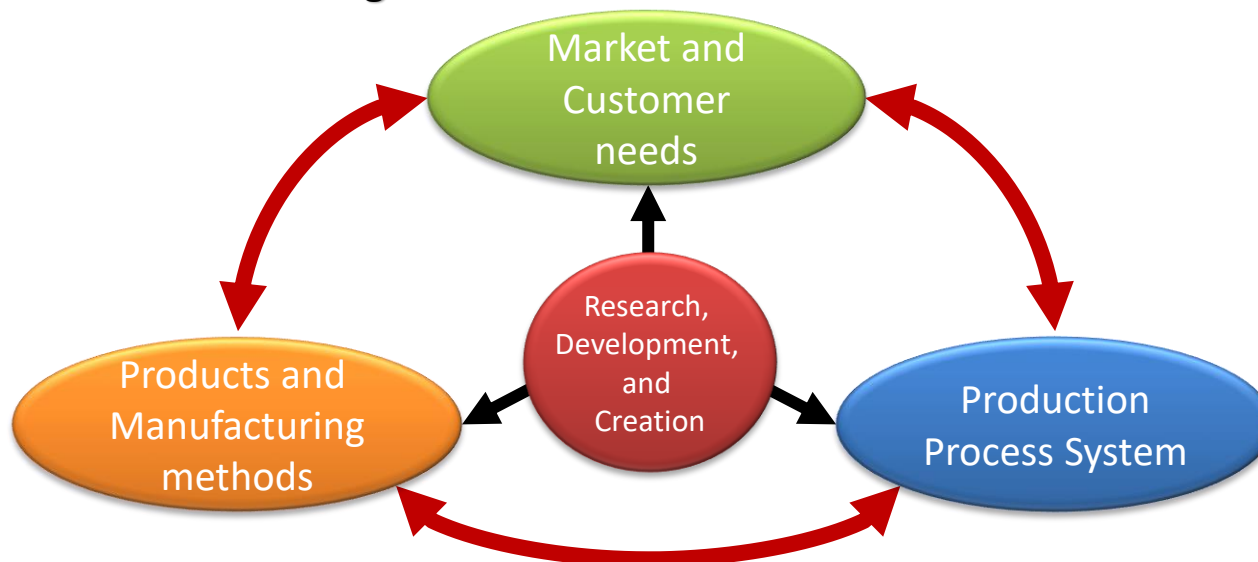
Double-sided
Paste Through-hole
PWBs

Single-sided
PWBs

Aluminum
-based
PWBs

**Total support for
Development, Design, Prototyping, and Mass production**

“Integrated Product Creation Method”



EMS and Carrier Jigs(JIG) Business

EMS

Carrier Jigs
for
Micro parts
and PWB

Carrier Jigs
for
Flow soldering

Carrier Jigs for
Solder printing・
Mounter/
Boards dividing

EMS

- High-quality

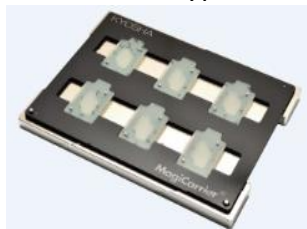


- Available from Trial to Mass production



MagiCarrier®

- Conventional type



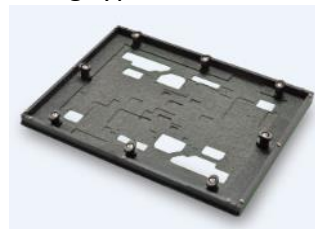
MagiCarrier®-β

- Sheet type



MagiCarrier®-DIP

- Fixing type

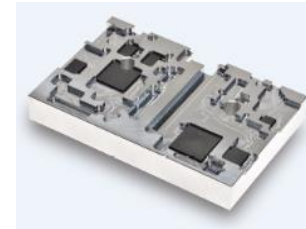


- Variable type

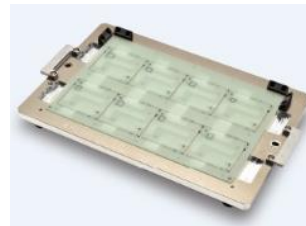


MagiFIX®

- Solder printing・Mounter



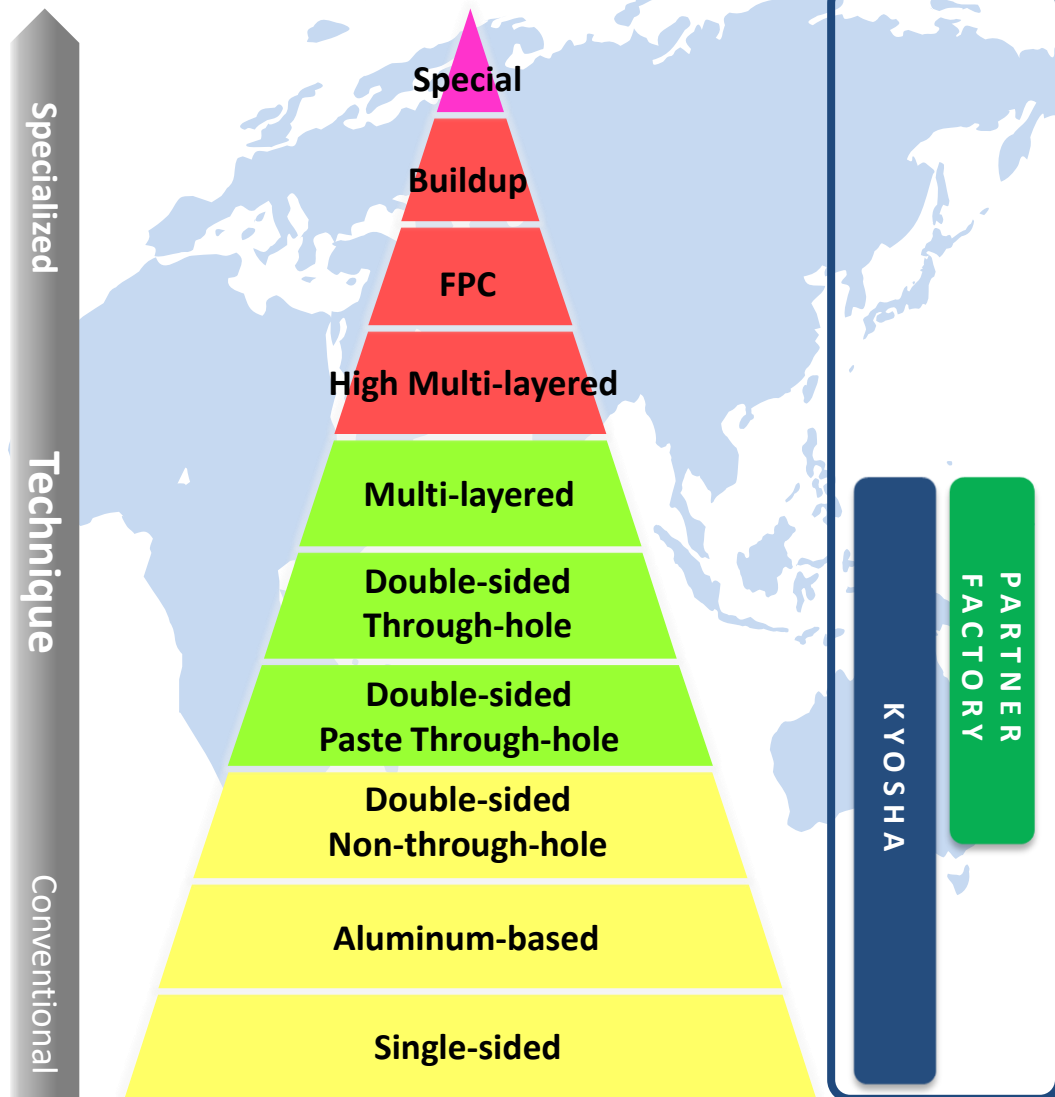
- Board dividing



PWB Structures

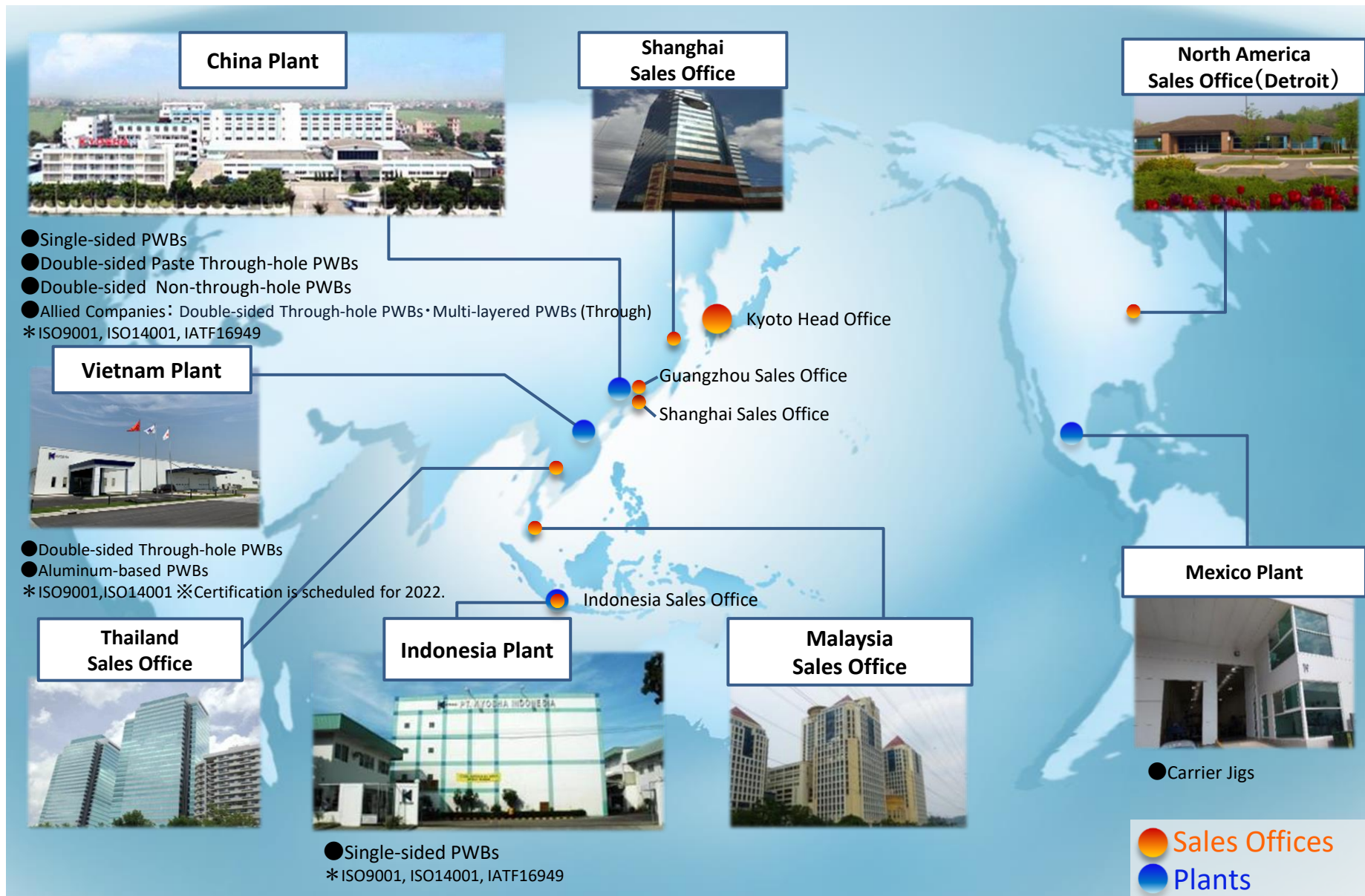
Business Area

Production items by location



PWB	JAPAN	CHINA		INDONESIA	VIETNAM
		KYOSHA	PARTNER FACTORY		
Buildup					
FPC					
High Multi-layered 8L (Through) or more					
Multi-layered 4L/6L (Through)	●		●		Production start 2022
Double-sided Through-hole	●		●		●
Double-sided Paste Through-hole (Silver/Copper)		●			
Double-sided Non-through-hole	●	●	●		●
Aluminum-based	●	●	●	●	●
Single-sided	●	●	●	●	





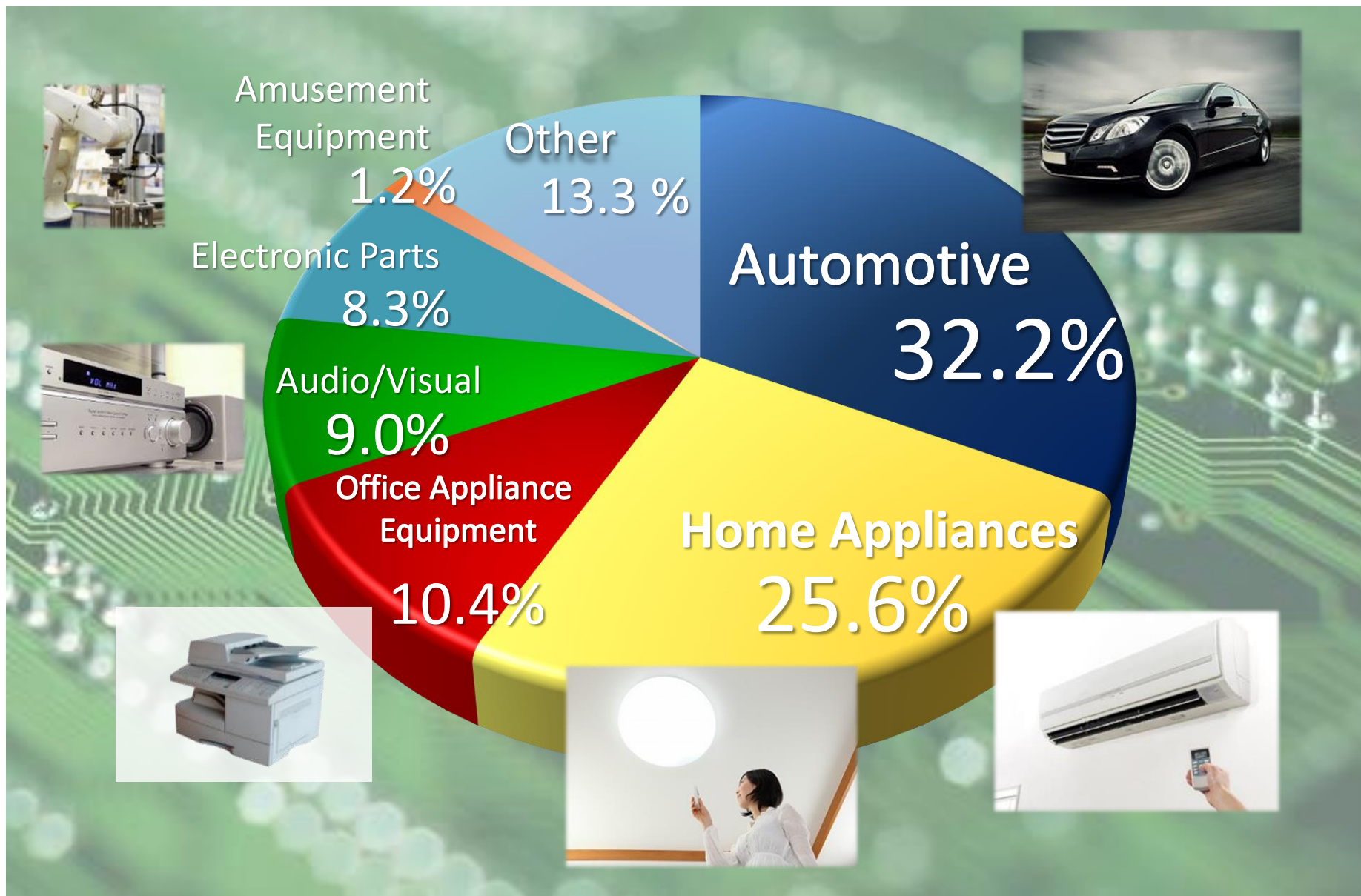
We deliver our PWB to your global manufacturing locations from Japan, China, Indonesia, and Vietnam.



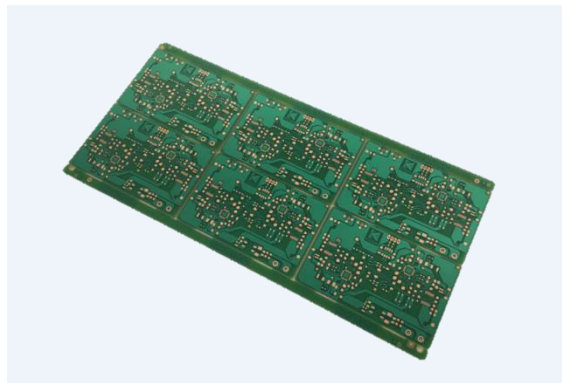
Item	Manufacturing Locations	Production Capacity per Month	
Double-sided through-hole	Vietnam	40,000m ²	70,000m ²
	Kyoto	15,000m ²	
	Niigata	15,000m ²	
	Allied Companies in China	50,000m ²	
	Total	120,000m ²	

Item	Manufacturing Locations	Production Capacity per Month
Single-sided	Kyushu	80,000m ²
	China	220,000m ²
	Indonesia	100,000m ²
	Total	400,000m ²

Item	Manufacturing Locations	Production Capacity per Month
Double-sided Paste Through-hole • Double-sided Non-through-hole	China	40,000m ²



Printed Wiring Boards Business



0603 Mounting PWBs

We can print copper lands for 0603 sized components by screen printing method. It is considerably less expensive than photographic printing method.

«Supported Product»

- Single-sided
- Double-sided Non-through-hole

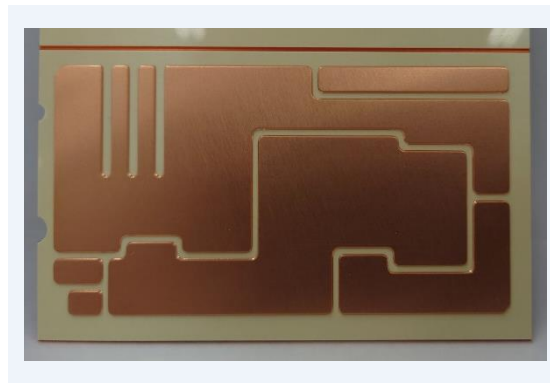


Printed Electronics

We are developing technology for Film PWBs that forms circuits by printing conductive paste on film based materials.

«Major Application»

- General FPC area without strong bending
- Sensor, Film heater



Heavy-copper PWBs

Metal substrate with high thermal conductivity of 12 W/(m-k) and high insulation properties.

«Major Application»

- Industrial equipment (motors, etc.)
- Air conditioning equipment



Our PWB, EMS, and JIG
businesses help realize future technology.

KYOSHA envisions the future.