



·ENGINEERING·
TROUBLESHOOTING

Get focused direction!

Overview

We are a company dedicated to providing solutions to the Automotive Industry, we focus on the development of Engineering and solving problems focused on Industry 4.0, through innovation, technological vanguard, technical and comprehensive development, superior engineering, to fix the needs of our clients, in an efficient, transparent, committed and responsible way.

The development of Engineering for different companies has allowed us to evolve, be a flexible company, able to adapt to the needs and standards established by each one of our clients.

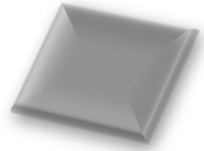
Mission

We are a company with the ability to serve our clients inside and outside the country, which offers engineering solutions, exceeding clients' expectations through high-performance teamwork committed to the values of the organization, reaching quality and cost goals, continuous improvement, security and adaptability.

VISION

Taking on the challenges of the immediate present, offering the best service to our clients by creating development opportunities for our collaborators, as well as developing an innovation and research center that allows us to expand our range of services to the industry.

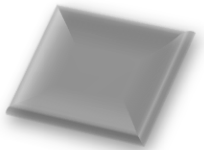
Services



Automation processes, design and programming, robotic integrations, mechanical and electrical engineering developments partners of **ABB, FANUC, KUKA and Yaskawa**.



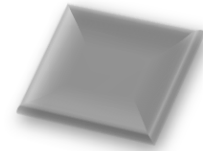
Integration of vision systems, partners of the companies **Eigen Innovations, Keyence and Cognex**, carrying out the development of engineering, processes for these systems and integrations at the points of use.



Design, development and construction of JIG's, Panels, Grippers and Manipulators.



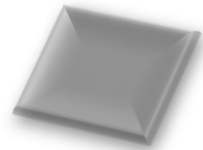
Welding and laser cutting.



Distribution of measurement equipment, CMM's, arms, scanners, personnel training, equipment calibration, retrofits, etc.



Dimensional metrology services, equipment programming and calibration, CMM (Polyworks, PCDmiss).



Diagnostics and inspection of materials and welding processes (plastic, aluminum and metal) using vision systems through the development of artificial intelligence applied to vision systems



Design and manufacture of fixtures, (Control, Holding, Checking), machining capacity.

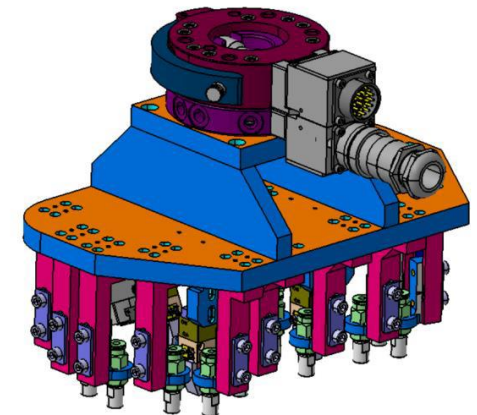
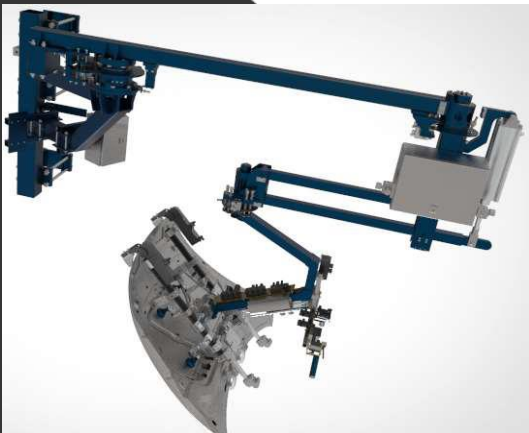
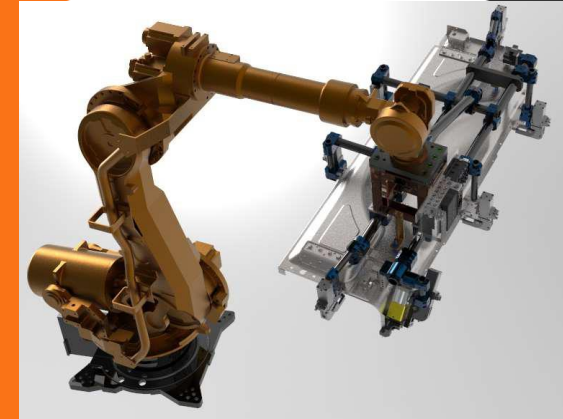
Our participation in Industry 4.0



ENGINEERING
TROUBLESHOOTING

Automation processes, design and programming, robotic integrations, mechanical and electrical engineering developments.

- *Control boards*
- *Welding cells*
- *Welding devices*
- *Vision systems*
- *Automation of production, assembly and manufacturing lines.*
- *Design, development and construction of JIG's, Panels, Grippers and Manipulators*



Vision systems



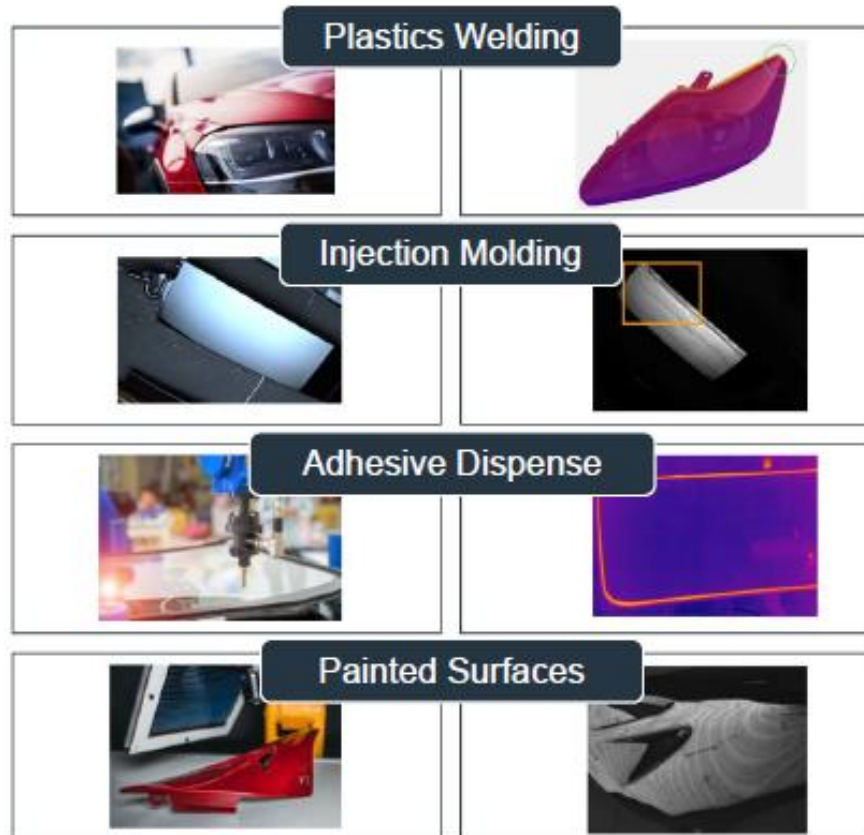
ENGINEERING
TROUBLESHOOTING

- *Alignment*
- *Dimensioning.*
- *Item detection.*
- *Gauging.*

WE HELP OUR CUSTOMERS GET AHEAD OF DEFECTS BEFORE THEY HAPPEN

Eigen Innovations machine vision

Automotive Applications



Eigen Machine Learning specialists designed an algorithm that predicted weld quality in real-time.

Eigen machine learning specialists designed an algorithm to detect all three defects in real-time.

Eigen machine learning specialists designed inspection algorithm to identify broken or thin / excess bead.



Image & Process Data
Processed in Real Time
at the Edge



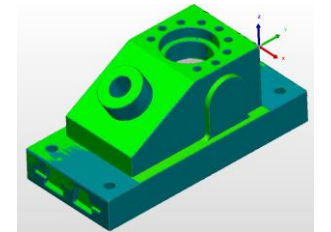
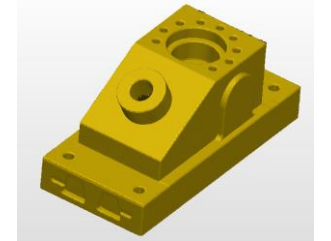
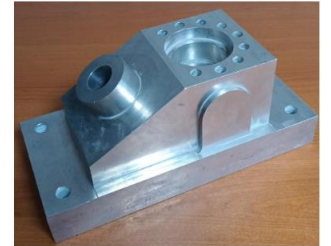
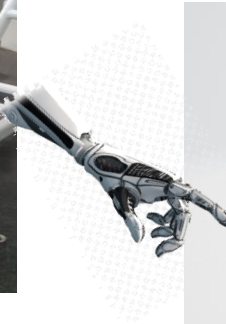
Industrial Grade
Thermal and Optical
Cameras



Real-Time AI Enabled
Insights (Cloud & On Prem)

Dimensional Metrology

Dimensional metrology services, equipment programming and calibration, CMM (Polyworks, PCDmiss).



- CMM measurement
- Fixture Measurement
- Scanner and Arm Measurement
- Parts scanning and tooling
- Measurement on site
- Workstation measurement
- Engineering reverse
- MSA

Support of CMM programmers and CMM operators to our clients in the outsourcing scheme!

Service to equipment of Metrology



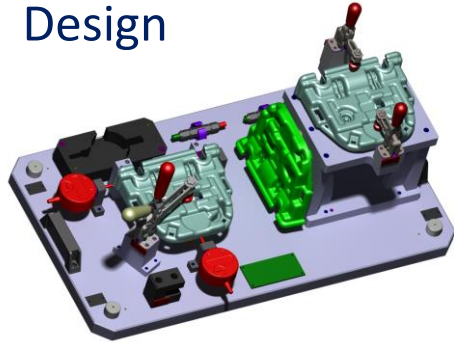
Brown & Sharpe, DEA, Zeiss, Mitutoyo, Wenzel, Leitz, Trimek, Cordax, Dukin, IMS, SIP, Stiefelmayer, TESA, Poly, Coord3.

- *Calibration (Certification)*
- *Maintenance.*
- *Repair.*
- *Retrofit and actualizations.*
- *Installation.*
- *Relocate.*
- *Spare parts*



Development and Construction of Fixtures

Design



Manufacturing

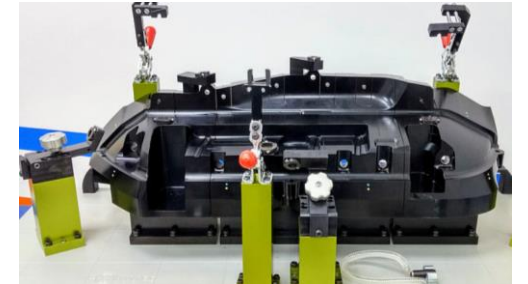


We provide solutions in the development of engineering, manufacturing and start-up to solve the requirements of our clients.

Approval & Release by CMM and measuring arm



ISO 17025 Certification



Welding and laser cutting

We offer laser cutting and welding services with capacities up to 6,020 mm.



Advantages of using our services

*Standardization of
processes*

*Less use of labor in
repetitive and high-risk
processes*



*Higher quality in final
products or services.*

*Decrease in production
errors*

*Better use of energy and
time*

Productivity increase

*Decrease in information
processes*

*Greater industrial safety and
lower occupational risks*

Our partners



<https://eigen.io/>

Partner located in Canada



<https://gripautomation.com/>

Partner located in Mexico



<http://masup.com.mx/>

Partner located in Mexico



<https://vector3dmesstechnik.de/>

Partner located in Germany



<https://www.it-s.mx/>

Partner located in Mexico



<https://www.nauka.com.mx/>

Partner located in Mexico



<https://www.dinmec-solutions.net/>

Partner located in Mexico

Contact information

Address: 4040 Broadway St, San Antonio Texas, 78209 USA



: +1 210 440 4049



: +52 222 710 8117



Web site: <https://engtroubleshooting.com>



ENGINEERING
TROUBLESHOOTING

*Plant
Manager*

Oswaldo Varela
o.varela@engtroubleshooting.com

*Eng.
Manager*

Cesar Camargo
c.camargo@engtroubleshooting.com

*Project
Manager*

Israel Valencia
i.valencia@engtroubleshooting.com

*Sales
Manager*

Manuel Culebro
m.culebro@engtroubleshooting.com