

# ERREKA

## PLÁSTICOS





A  
Company  
for People

► Introduction to Mondragon Corporation

General Data

Locations

► Matz Erreka Presentation

► ERREKA Plastics

► Location

► Technology

► Part types

► Customers

## MONDRAGON CORPORATION / *GENERAL INFORMATION*

ERREKA belongs to MONDRAGON CORPORATION the world's biggest Cooperative Group.

261 Companies and Entities operating

74,000 workers

Technological innovation and integrations as the driving forces behind its development

15 Research and development centers

467 invention patent families

1 University of its own



# MONDRAGON CORPORATION / *LOCATIONS*



In addition to Spain, the Corporation has offices and plants in

## Corporate offices :

Brazil	Chile	China
México	Russia	Vietnam
USA	India	

## Plants:

Germany	Brazil	China
France	India	Italy
Poland	Portugal	United Kingdom
Romania	Taiwan	Thailand
USA	Slovakia	Morocco
México	Czech Republic	Rep. South
Turkey		

# MONDRAGON CORPORATION / *GENERAL*



Automotive

Industrial Automation

Bodywork and Supplies

**COMPONENTS**

Construction

Lifting

Equipment

Home

Machine Tools

Industrial Systems

Tooling and Systems

COPRECI

EIKA

**MATZ ERREKA**

EMBEGA

FAGOR ELECTRÓNICA

ORKLI

TAJO

## ERREKA / BUSINESS UNITS



**ERREKA  
PLASTICS**



**ERREKA  
FASTENING SOLUTIONS**



**ERREKA  
AUTOMATIC ACCESSES**

ERREKA is configured **in three different business lines**, with a high level of autonomy in their management and able to compete in international environments but sharing common values and culture

## ERREKA PLASTICS / GLOBAL POSITION



To give an adequate response to the challenges of globalization along with its plant in Spain, **Erreka** Plastics has two subsidiaries, **Erreka Plast** in Czech Republic and **Erreka Mex** in Mexico, covering the production and commercial needs of their areas of influence.

### PRODUCTION SITES

Spain	Czech Republic	Mexico
3.500 square meters 37 plastic injection moulding machines Up to 400 tons	2.300 square meters. 16 plastic injection moulding machines. Up to 350 tons.	3.000 square meters. 39 plastic injection moulding machines. Up to 320 tons.
<b>Capabilities</b> <ul style="list-style-type: none"><li>• Plastic injection moulding</li><li>• Insert moluding</li><li>• Integrated operations</li><li>• Complex plastic parts &amp; assemblies</li><li>• Metal to plastic conversions</li><li>• Plastic injection moulds</li><li>• Prototypes</li></ul>	<b>Capabilities</b> <ul style="list-style-type: none"><li>• Plastic injection moulding</li><li>• Insert moulding</li><li>• Integrated operations</li><li>• Complex plastic parts &amp; assemblies</li><li>• Metal to plastic conversions</li></ul>	<b>Capabilities</b> <ul style="list-style-type: none"><li>• Plastic injection moulding</li><li>• Insert moulding</li><li>• Integrated operations</li><li>• Complex plastic parts &amp; assemblies</li><li>• Metal to plastic conversions</li></ul>



## ERREKA PLASTICS / *TECHNOLOGY*

Fleet of Arburg and Engel injection moulding machines: from 15 to 320 Tn.





## ERREKA PLASTICS / *Mexico-Facilities*



3.000 square meters.  
39 plastic injection moulding machines.  
Up to 320 tons.

### Capabilities

- Plastic injection moulding
- Insert moulding
- Integrated operations
- Complex plastic parts & assemblies
- Metal to plastic conversions



**Erreka Mex S.A. de C.V.** Santa Rosa de Viterbo No. 11, Lote 9, Manzana II,  
P. Ind. FINSA 76246 El Marqués (Querétaro)  
México



**ERREKA PLASTICS** / *Mexico-Facility*

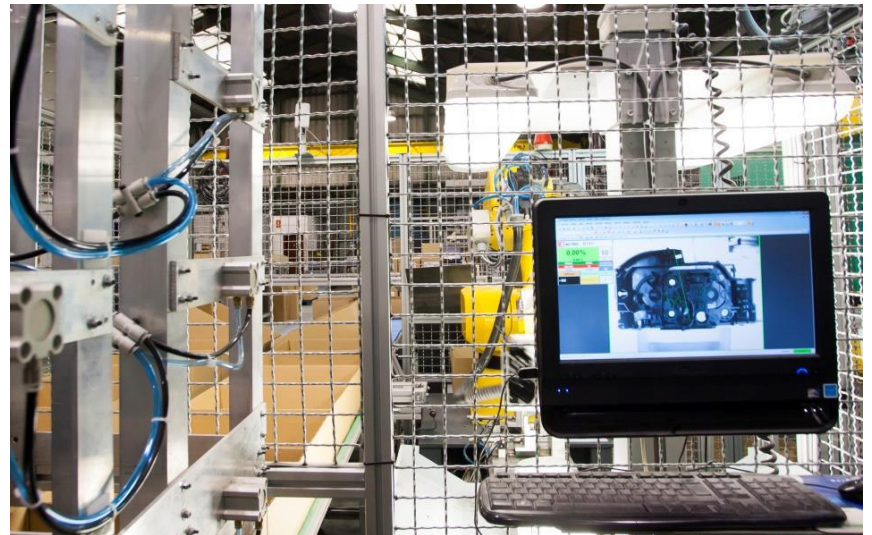
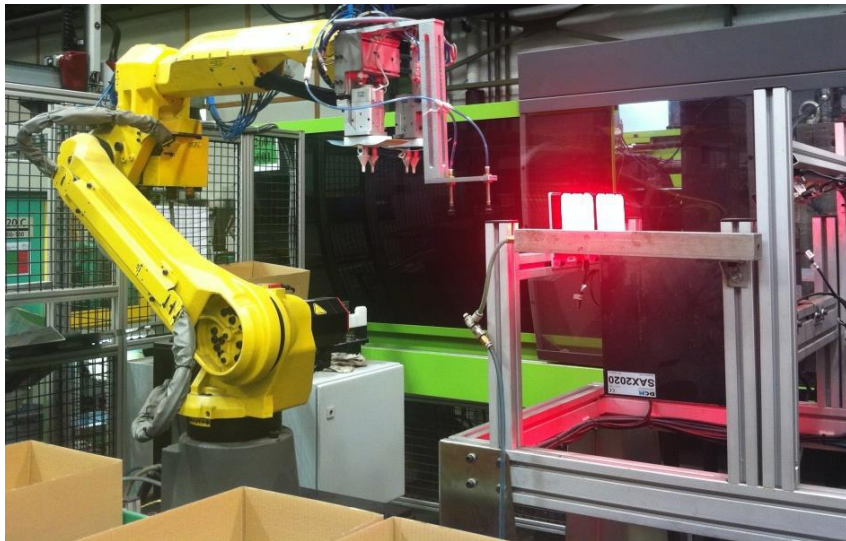
**SINCE 2001 IN MEXICO**





## ERREKA PLASTICS / TECHNOLOGY

Highly automated production processes:



Simple precision injection with automatic extraction, verification and packaging integrated in the cycle time.

## ERREKA PLASTICS / TECHNOLOGY

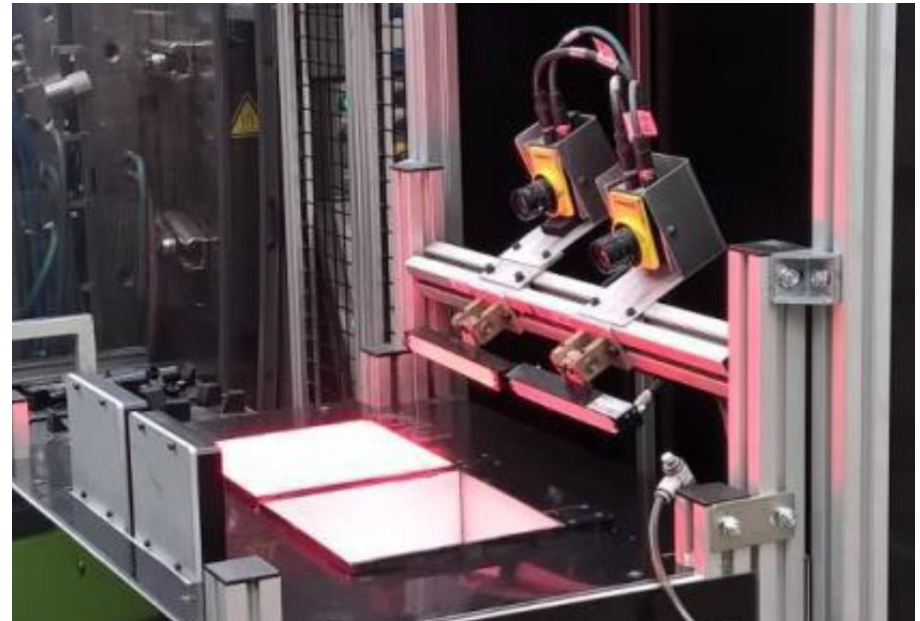
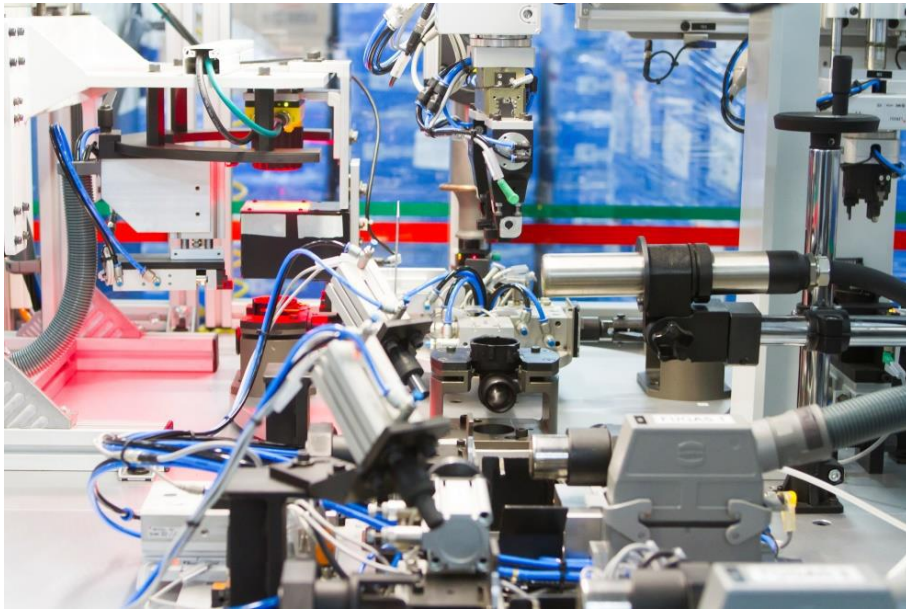
Highly automated production processes:



Ultrasonic Welding.

## ERREKA PLASTICS / *TECHNOLOGY*

Highly automated production processes:



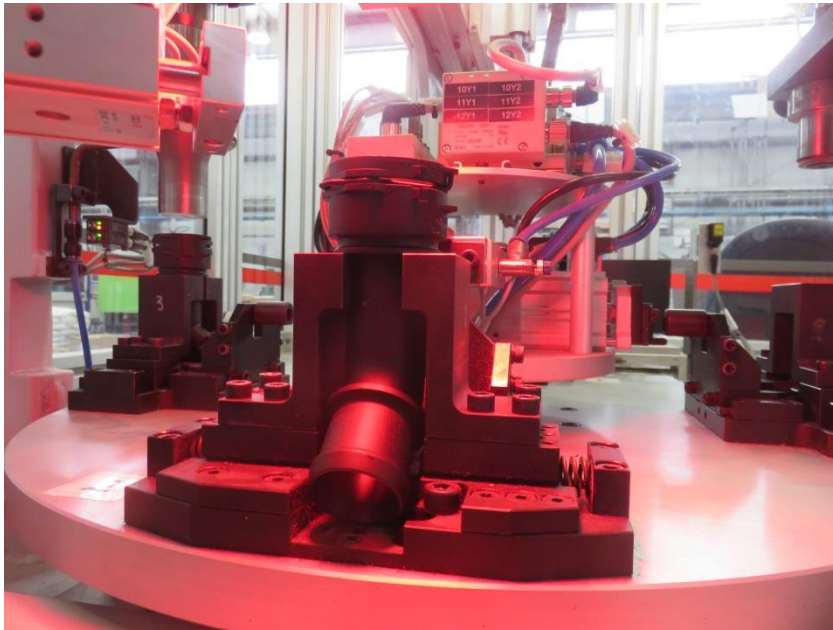
**100% Leak test.**

**100% artificial vision inspection.**



## ERREKA PLASTICS / *QUALITY*

Quality assurance for 0 ppm`s:

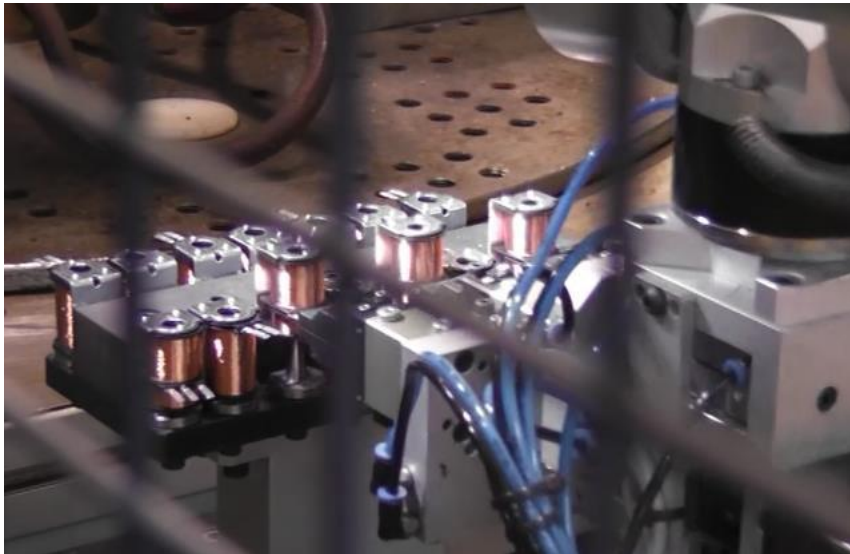


Integrated artificial vision for verification of 100% of production.



## ERREKA PLASTICS / *TECHNOLOGY*

Highly automated production processes:



Overmoulding

## ERREKA PLASTICS / *DEVELOPMENT*

Own design and production of plastic injection tools:



# ERREKA PLASTICS / PRODUCTS

Fluid Systems



Gears



Door Systems



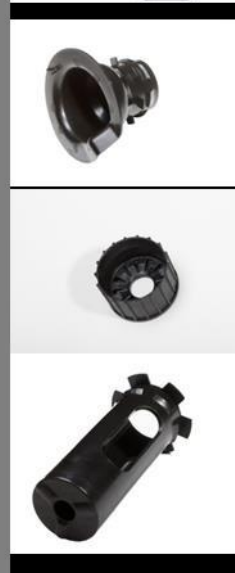
Overmoulded parts



Levers



Striker Caps



## ERREKA PLASTICS / *Main Costumers*





Wiper Systems



Thermal





## ERREKA PLASTICS MEXICO / *Products*



Wiper Motor



Lighting







Powertrain



## ERREKA PLASTICS MEXICO / *Products*



## ERREKA PLASTICS MEXICO / *Products*

**Continental**   
**CONTITECH**



**AKWEL**



## ERREKA PLASTICS MEXICO / *Products*



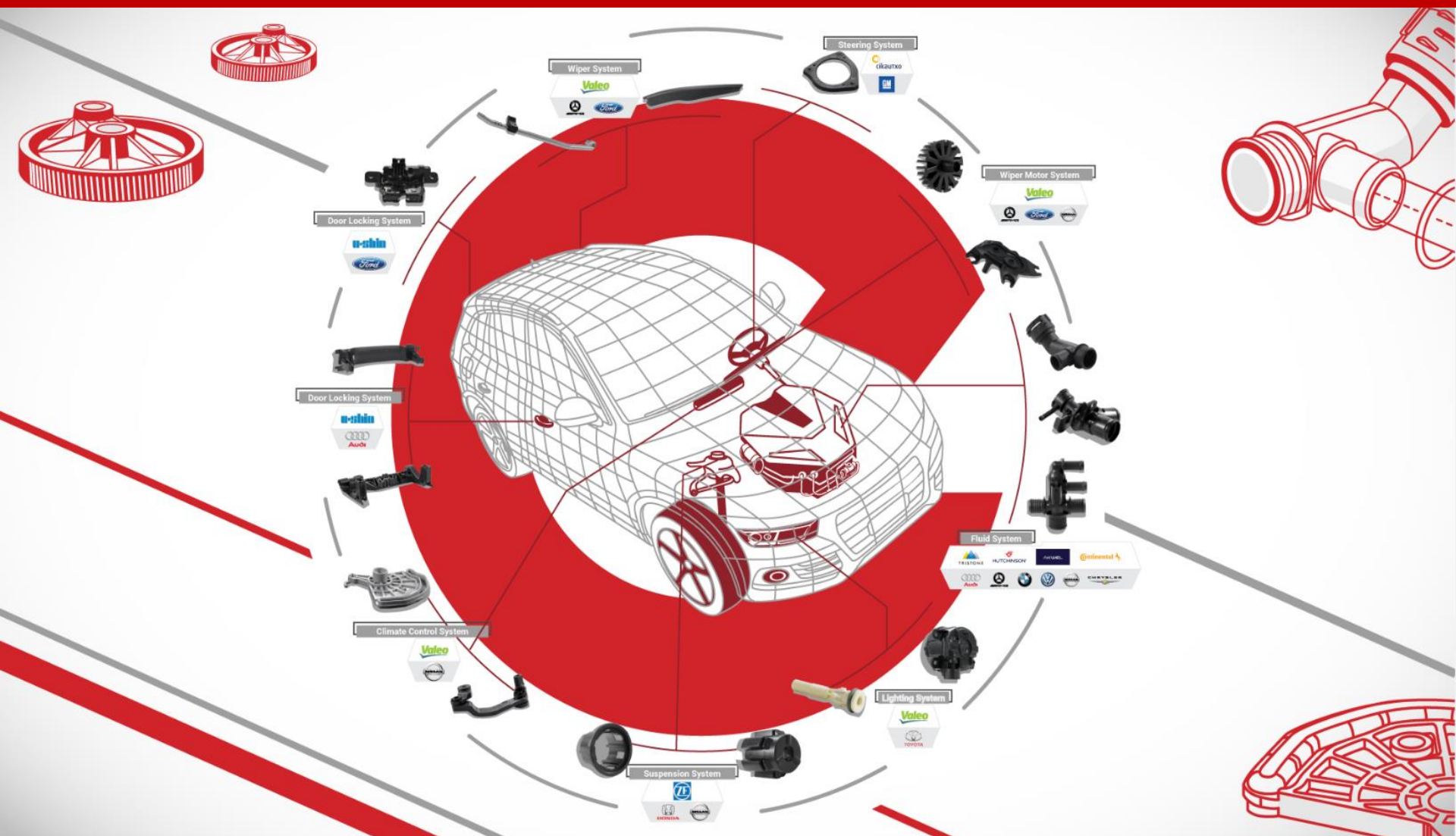
## ERREKA PLASTICS MEXICO / *Products*

Q5



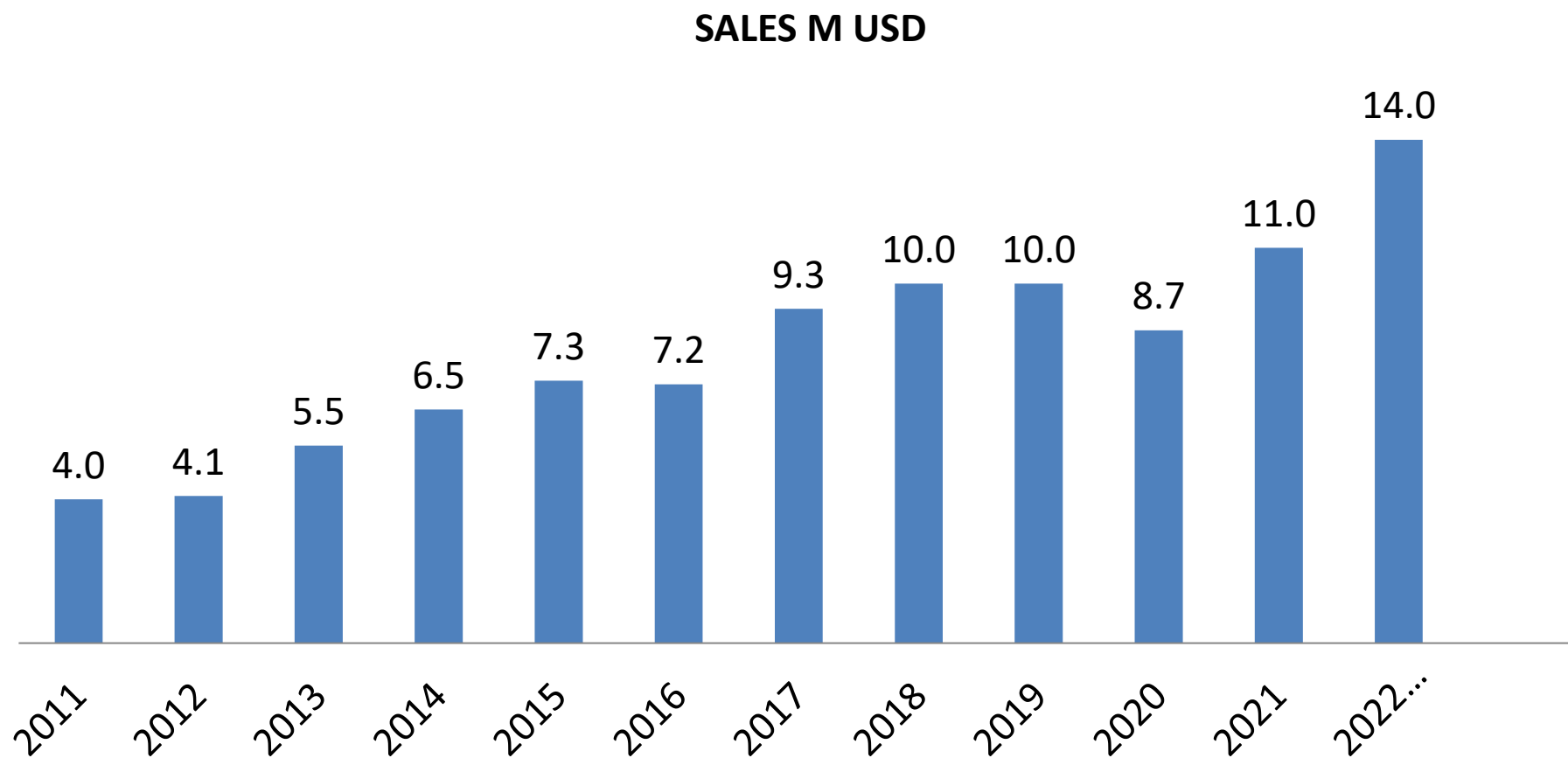


# ERREKA PLASTICS MEXICO / *Products*





## ERREKA PLASTICS / *Sales evolution-Erreka Mex*



**THANK YOU!!!**