



PROCeMmEX

Performance in Metal Products

WHO WE ARE

Procemmex is a proud Mexican company created in 2010, manufacturer of precise high quality metal parts for the industry. Our objective is to perform with excellence, professionalism and passion to be a superior option in the market, constantly striving in improving our work methods as well in the training of our teammates.

Processes

- Cutting: Fiber Optic Lasers, Shear
- Punching and Bending
- Rolling
- Machining
- Assemblies
- Weldments
- Installation of Hardware
- Powder Paint
- Wet paint and Hot dipped galvanized “External Source”



OUR COMPANY



Located in
Monterrey, Nuevo Leon. Mexico
(2 hr. Drive to the US)

Certifications



Certificate No. 49209



American Welding Society



IMMEX
601-2013

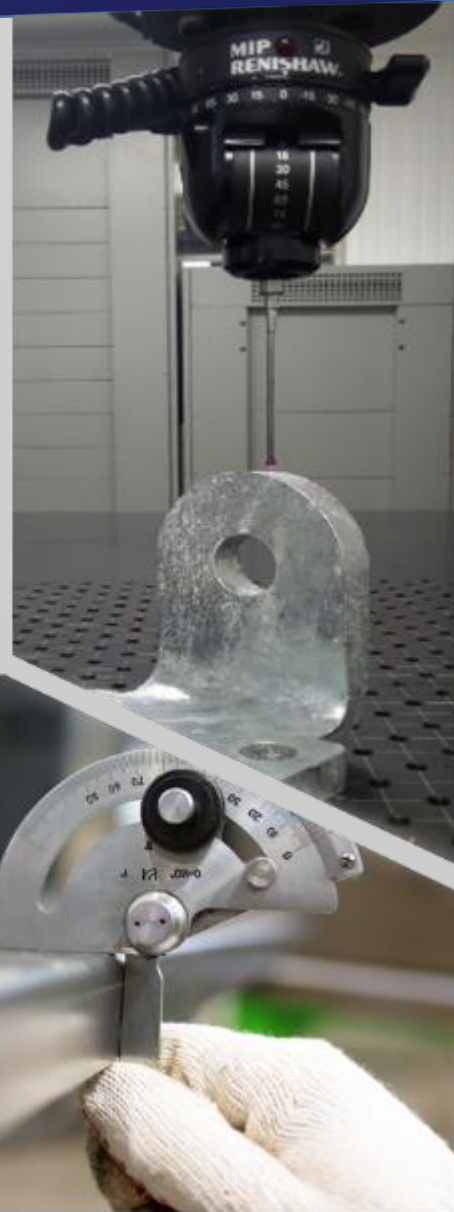


Metals that we can process

- Hot rolled
- Cold rolled
- Galvanized
- Pre-painted
- Stainless
- Aluminum
- Structurals

Associates

Qty. 176
White collar.- 54
Blue collar.- 122
Turnover rate: 7%



FACILITIES

Industrial Building.- 82,882 sq ft. (7,700 sq. mt.)

Yard.- 26,675 sq. ft. (2,500 sq. mt.)

3 bridge cranes of 11,000 lbs. (5,000 kgs.)

Projects for 2022

Building expansion of 12,917 sq ft. (1,200 sq. mt.)

Laser Tube Cutting up to 6" diameter x wall .5" x 20 ft long

CNC Panel Bender Up to 14 Gauge x 6.5' (2 mts) Width

Projects for 2023

Additional building expansion 12,917 sq. ft. (1,200 sq. mt.)

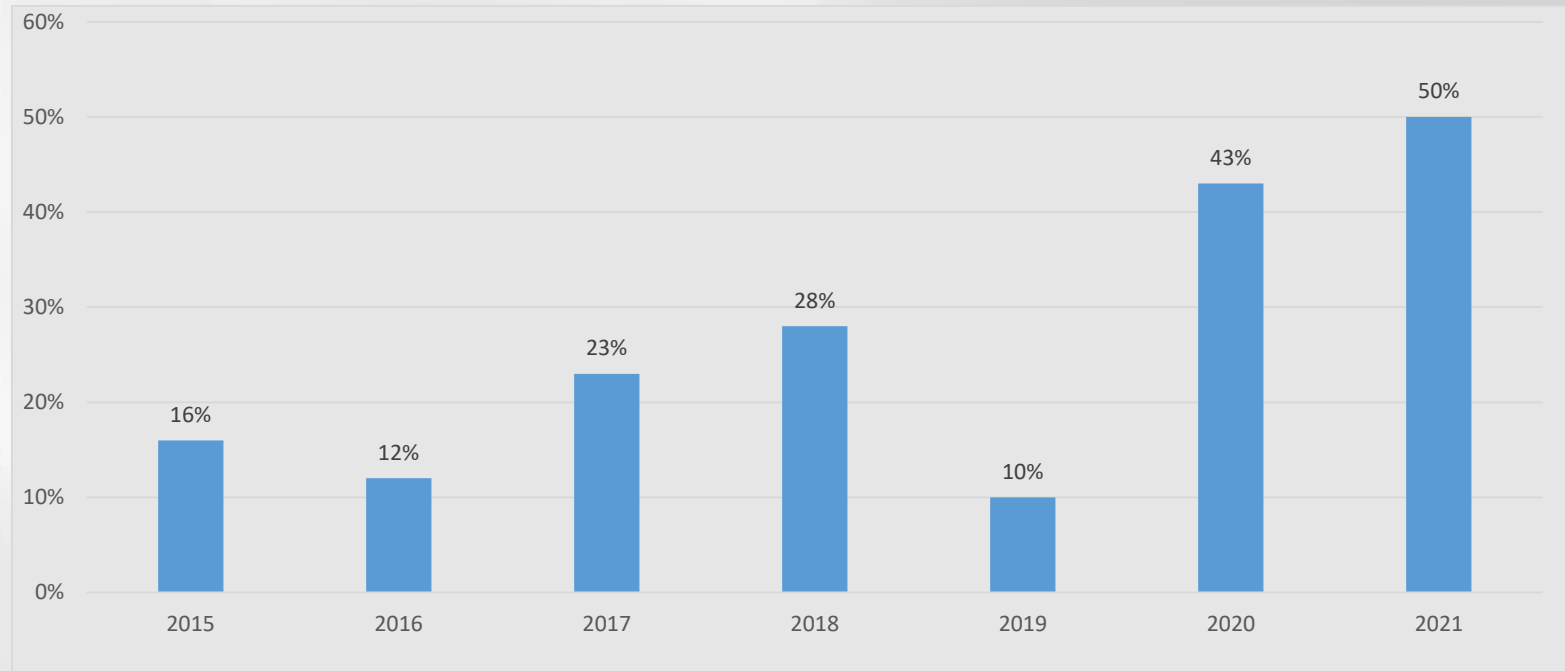


WHY CHOOSE PROCEMMEX

- Passion in being a reliable and competitive source for our clients.
- Performance oriented team complying with lead times and quality.
- Strong commitment of Excellence.
- Constant communication with our clients to assure Quality and Service.
- Experience manufacturing and exporting to world class companies since 2010.
- Immex Certified, ISO 9001:2015, Core Tools, Advance Engineering, (Solid Works, Autocad), Kanban.
- In House Metrologist and GD&T
- Certified AWS D1.1 and D1.6 GTAW (carbon, aluminum and stainless) procedures Certified
- Certified welding inspectors (CWI), WPS and PQR certified welders and welding equipment
- Compliance with international safety and environmental regulations.
- Constant Training and Internal Audits.
- Global Shop ERP based and EDI capacity

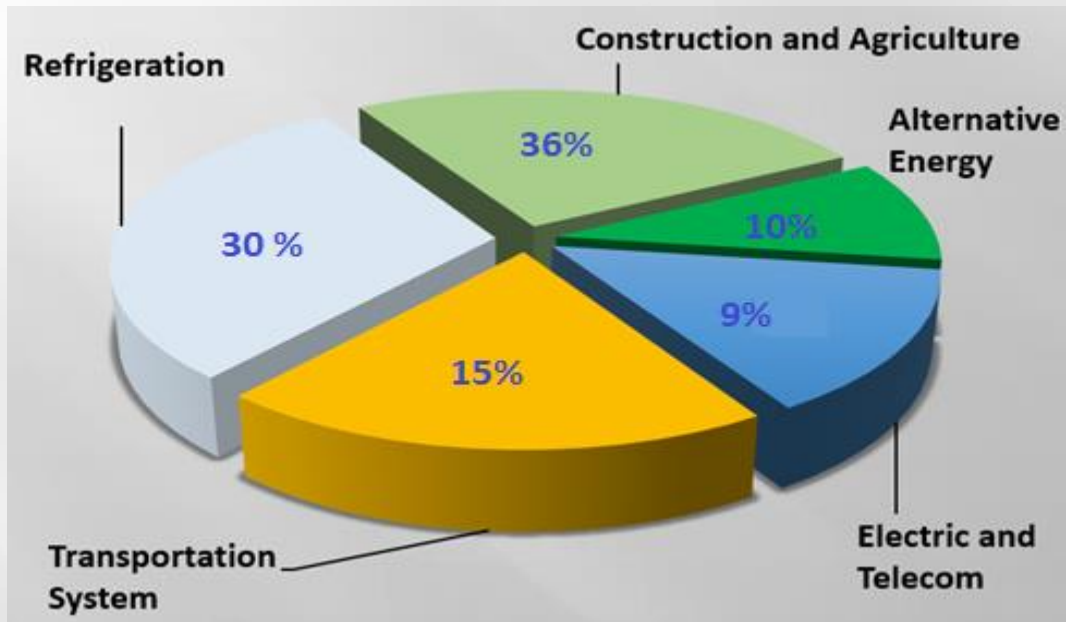


SALES GROWTH PER YEAR

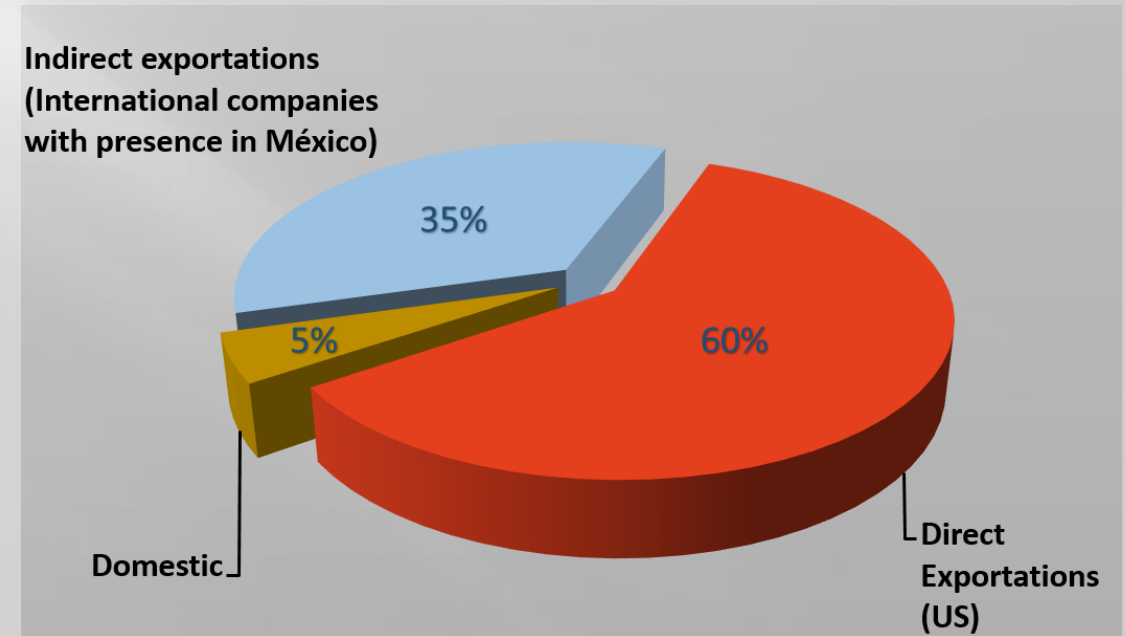


MARKETS AND SALES

Presence in the following Markets



Geographical Sales



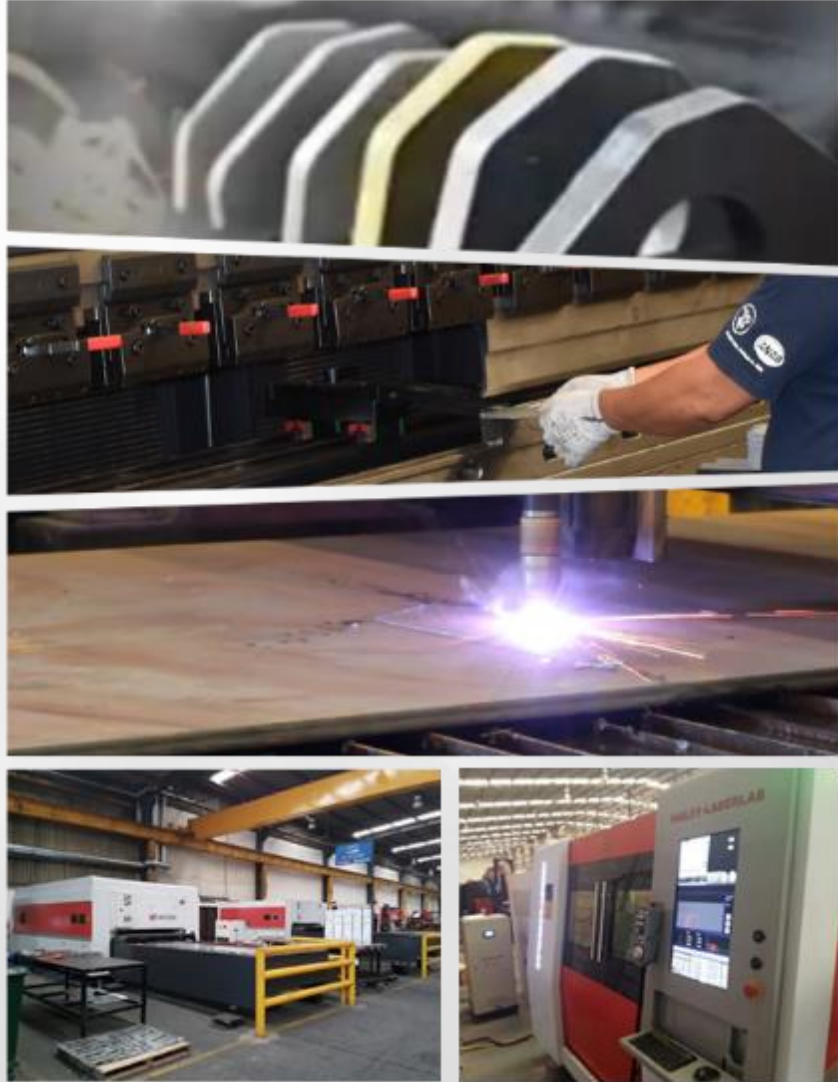
MANUFACTURING MARKETS AND CLIENTS



SIEMENS



LIST AND CAPACITY OF KEY EQUIPMENT



Cutting Equipment

- **5 Laser Fiber Optic Lasers.-**
3000-8000 Watts, Thickness 1 1/4" 5' x 20 ft.
- **Cincinnati Shear**
Width: 10 ft. Thickness: 3/8"
- **2 Band Saws**
Amada 10" x 10" and Kalamazoo 25" x 25"

Punching and Press Brake Equipment

- **4 CNC Amada Punch Turrets with Brush Tables**
Max. Wth.- 60", Max. Thk.- 3/16", Max. Length.- 16.5 ft.
- **11 CNC Press Brakes:**
Max. Width.- 14 ft. Max.- 250 Tons

Rolling

- **2 Rolling machines**
Up to .25" x 50" width

LIST AND CAPACITY OF KEY EQUIPMENT

Machining

- SYIL CNC Vertical Machining Center
36 tools, table of 25" x 15"
- OKUMA CNC Lathe Machining Center
12 tools

OBI PRESSES

- 1 Rockford of 125 Tons. bed size 29" x 45"
- 2 Minster of 100Tons. bed size 30" x 40"
- 1 Heim of 70 Tons. bed size 20" x 32"
- 2 Minster of 45 Tons. bed size 20" x 29"

Welding Equipment

- 3 TIG electronic Inverter AC/DC
- 5 Miller MIG/TIG
- 3 Mechanized spot welder

INSERTION PRESS



Powder Coating Paint

Paint Booth and Oven Size

7 ft. wide x 8 ft. height x 10 ft. length (2.20 mt. x 2.50 mt. x 3 mt.)

- Paint Adhesion Test Kit (P.A.T.), Positector and Colorimeter to guarantee the paint's specifications and quality.



QUALITY LAB

CERTIFIED INSPECTION EQUIPMENT

- 2 Faro measuring arms of 12 ft.
- Mitutoyo Granite table of 36" x 72" x 8"
- Mitutoyo Verniers from 6" up to 48"
- Mitutoyo Height vernier up to 24"

External Finishing Services

- Hot dipped galvanized
- Plating
- Wet Paint



ISO 9001-2015 CERTIFICATE

We have been a ISO Company since 2013



Certificate No. 49209

ABS Quality Evaluations
Certificate Of Conformance
This is to certify that the Quality Management System of:
Procesos Metálicos PCM, S.A. de C.V.
Privada Fundidores #1333
Col. Garza Cantú
San Nicolás de los Garza, Nuevo León 66480
México




has been assessed by ABS Quality Evaluations, Inc. and found to be in conformance with the requirements set forth by:
ISO 9001:2015

The Quality Management System is applicable to:
MANUFACTURE AND WELDING OF METALS PARTS FOR INDUSTRY
MANUFACTURA Y SOLDADURA DE PARTES METÁLICAS PARA LA INDUSTRIA

This certificate may be found on the ABS QE Website (www.abs-qe.com). For certificates issued in the People's Republic of China information may also be verified on the CNCA website (www.cnca.gov.cn).

Certificate No: 49209
Effective Date: 02 January 2020
Expiration Date: 10 November 2022
Revision Date: 02 January 2020

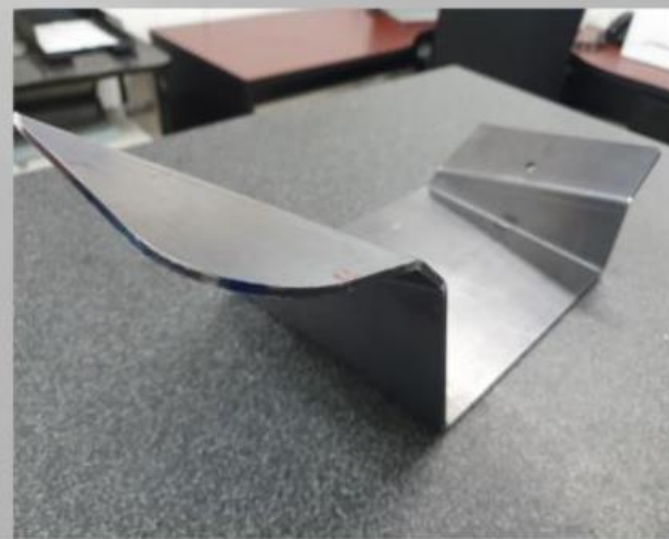
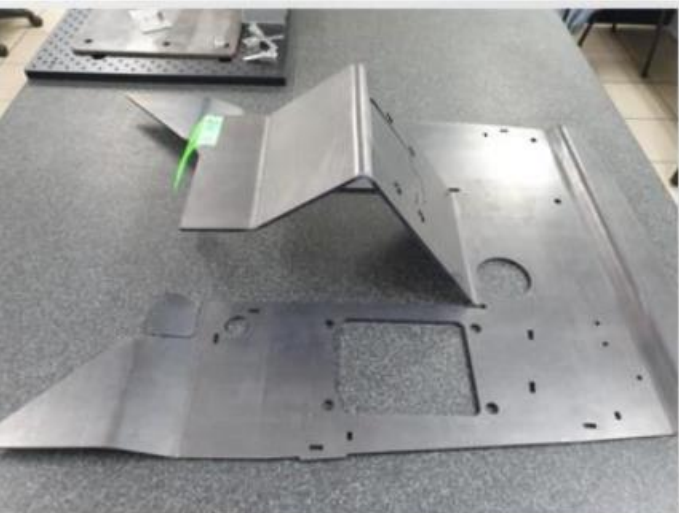
Dominic Townsend
Dominic Townsend, President

Validity of this certificate is based on the successful completion of the periodic surveillance audits of the management system defined by the above scope and is contingent upon

ABS Quality Evaluations, Inc. 1701 City Plaza Drive, Spring, TX 77389, U.S.A.
Copyright 2011-2020 ABS Quality Evaluations, Inc. All rights reserved

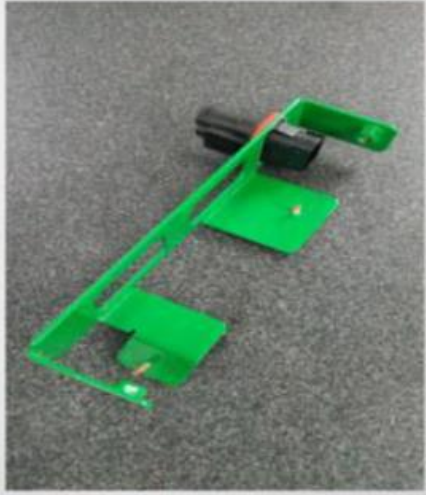
MANUFACTURED PRODUCTS



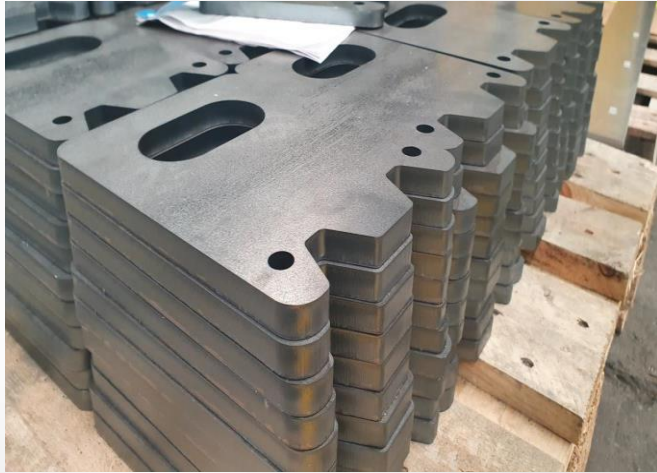
MANUFACTURED PRODUCTS



MANUFACTURED PRODUCTS



MANUFACTURED PRODUCTS



CONTACT

Comm. +52 (81) 8351-1500

Email.
info@procemmex.com.mx

Address:

Priv. Fundidores 1333
Col. Garza Cantu
San Nicolas de los Garza, N.L.
Mexico 66480

www.procemmex.com.mx

