

[www.mfgoregon.com](http://www.mfgoregon.com)



**Manufacturing Beyond...**





# Background

This small company is my lifetime dream come true.

Since 1994, when I started in Manufacturing Projects at TEC de Monterrey, Mexico, as a Computer Aid Design Instructor modeling 3D mechanical parts, I found that I thoroughly enjoy manufacturing projects. My passion is to transform pieces of metal into high value-added mechanical parts.

I learned techniques, methods and strategies from American machinists working in a clean, drug free manufacturing shop committed to putting the customer first, with total quality as our norm.

Our shop has plenty of CNC machining experience from Oregon, USA, same quality, same materials, same tools, same knowledge and  
BETTER PRICING.

We can offer you job projects on time, with Top Quality and Low Prices. That is why we want hear about your machining projects.

You can have confidence in us.

*Jorge Robles*

CEO





# About us?

## Mission

We create value for our customers, jointly innovating high precision products and processes with effectiveness and profitability, through our talent and passion for manufacturing.



To be a benchmark in the creation of value, with leadership in the manufacturing sector, achieving profitable, sustainable and socially responsible growth.





# Quality politics

We are committed to continuously improve the quality standards of the processes, through the efficient implementation of the quality management system, to achieve the satisfaction of our customers.



The logo consists of the letters 'MFG' in a bold, sans-serif font. The letters are rendered in a 3D style with a dark green color and a lighter green highlight on the top surfaces, giving them a metallic or plastic appearance. They are set against a plain white background.The logo consists of the word 'Oregon' in a bold, sans-serif font. The letters are rendered in a 3D style with a dark green color and a lighter green highlight on the top surfaces, giving them a metallic or plastic appearance. They are set against a plain white background.

**Industry we  
serve**

- Automotive
- Medic
- Aerospace
- Optical fiber
- Electronics



# Installed infrastructure

5,060 sqf. Facility with 12 CNC Machines:

- 6 Vertical Machining Centers
- 3 CNC Lathes
- 2 CNC Swiss Lathes
- 1 CMM Zeiss







Our quality is guaranteed  
with certified suppliers  
and prestigious brands in  
the world





**VMC**  
**CHEVALIER**  
**2040 VMC-L**

**4 ejes**

X:40"

Y:20"

Z:24"

U:10"DIA



**CNC LATHE**  
**HITACHI SEIKI TF-20**

10 Tools

DIA: 14" L: 12"

# CNC

## Installed infrastructure





# Inspection and Quality

## COORDINATE MACHINE

ZEISS ECLIPSE 2840  
Presición:  $\pm 0.00005''$   
capacity of X40 Y28 Z24



DIMENSIONAL MEASUREMENT OF PARTS AND/OR FIXTURES

## Equipment for Inspection And Measurement

(precision  $\pm 0.0001''$ ).



## Granite Surfaces

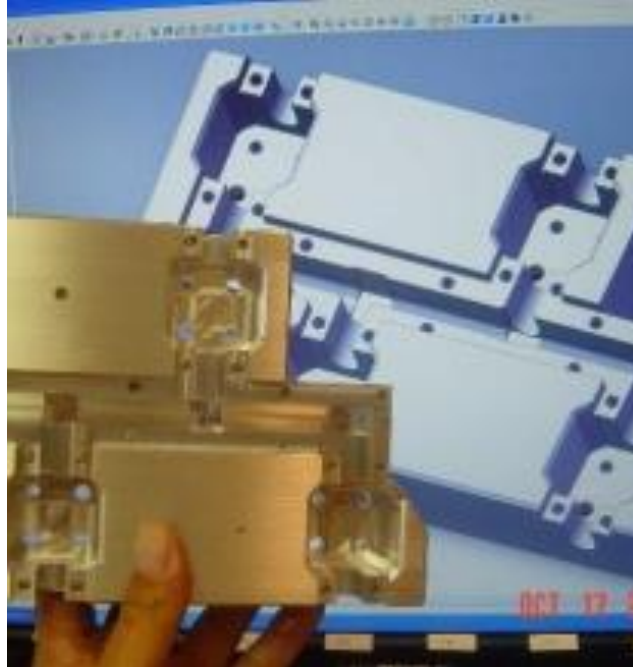
Grade AA, B+



## Complementary equipment

(cutting, presses, clamping,  
polished finish).





# CNC MACHINING

Fast and Reliable  
Affordable quotes in hours  
Capacity  
Capabilities  
Quality control  
Experience  
On-time delivery





# FIXTURES FOR INDUSTRIAL PROCESSES

We have gained many years of experience in manufacturing all types of fixtures





# ANODIZED ALUMINUM







# SOLDER PALLETS

**(WAVE OR SELECTIVE)**

Good performances with lead free soldering process.

**Increased temperature resistance:**

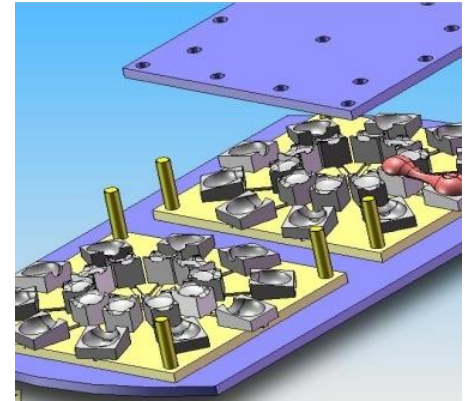
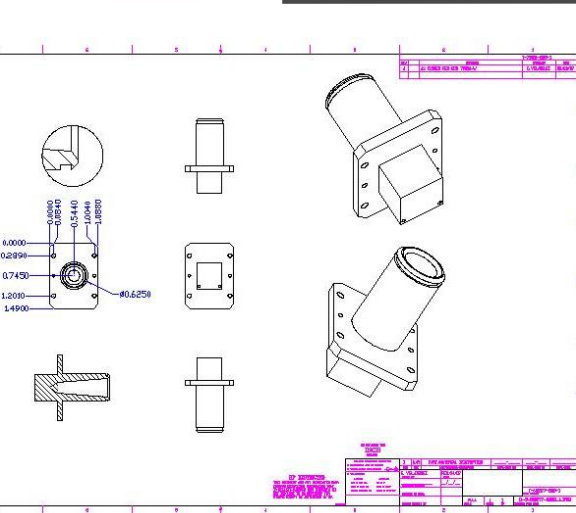
good performances at higher temperatures than 300°C.

Excellent flux resistance.

Dissipative material.

Surface resistivity 10E5 to 10E9 Ohm/square.

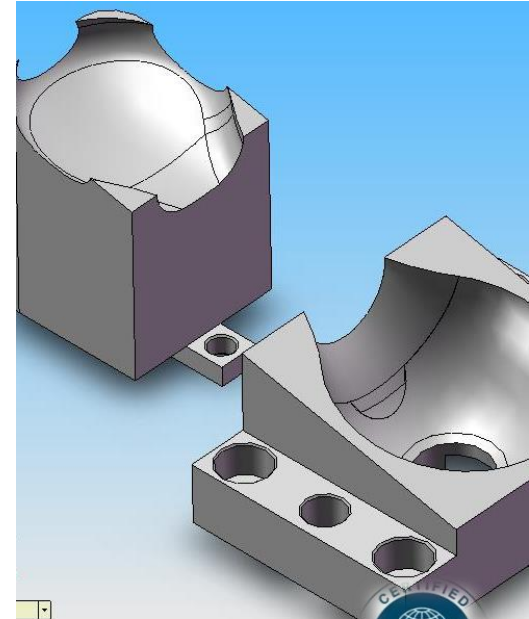




## 3D PROTOTYPES

We offer rapid design iterations, physical proof of concept, and scale models for clients looking to accelerate product development.

Solidworks, AutoCAD, IGES, BobCAD-CAM, MasterCAM.





**CONTAC US:**

JORGE ROBLES

Manufacturing engineer

[jorge.robles@mfgoregon.com](mailto:jorge.robles@mfgoregon.com)

[ventas@mfgoregon.com](mailto:ventas@mfgoregon.com)

Chihuahua, MX, 31350

+52 (614) 259-7994, (614) 335 7775

+52(614) 100-1828

**WE  
THINK  
BIG**

