



TREBOTTI

CIA. CONSTRUCTORA D E S D E 1 9 8 0



1980

Since

220

USD Mill
Bonding Capacity

5m

Liability Insurance

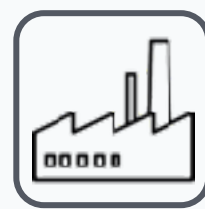
50

In-house Engineers



Business Holding Company

Subsidiaries



Construction
TREBOTTI



Structural Steel
TEMSA



Industrial Mobile Cranes
Grúas MOVER



Transportation
REMOLK



Real Estate
GINN

‘ grupo ittob | subsidiaries



GENERAL CONTRACTOR

- In-house Engineering
 - Conceptual Design
 - Basic Design
 - Detail Design
 - Value Engineering
- Construction Specialties:
 - Civil and Structural Works
 - Utilities and Services
 - Mechanical and Automation
 - Equipment Commissioning
- ISO 9001, ISO 14001 & ISO 45001
- Delivery Methods: Design & Build, Turn-Key, General Contractor & EPCM



STRUCTURAL STEEL PLANT

- Design:
 - Conceptual Design
 - Basic Engineering
 - Detail Engineering
 - Value Engineering
- Fabrication and Erection:
 - 2,400 tons/month
 - Special Steel forms and containers
 - CNC cutting and drilling lines
- Certifications:
 - AISC Certified (USA)
 - IMCA Certified (MX AISC Equivalent)
 - AWS Certified
- Export: US, Caribbean & Central America



MOBILE INDUSTRIAL CRANES

- Industrial Mobile Cranes with Lifting Capacities from 10 tons to 500 tons
- OSHA Certified Personnel
- Pre-task Analysis
- Nationwide Service
- Modern Fleet
- 2 Domestic Locations: TRC & AGS
- Over 35 years experience
- Construction Equipment for subsidiary companies construction projects.



REAL ESTATE

- Industrial Real Estate Developer
 - BTS Project
 - Pocket Parks
- Site Selection flexibility
- 2 Industrial Parks
- Multiple Industry Clients
- LEED Certified Buildings
- EDGE Certified Buildings



TRANSPORTATION COMPANY

- Transportation company for internal service only
- Oversized load transport
- GPS tracking and recovery system on every unit
- Better control in every shipment
- Cost effective reflected in our customers proposal price



‘ financial strength



Business Group financial health and strength.



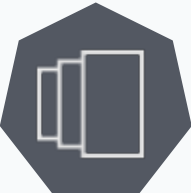
Bonding Capacity

TREBOTTI Bonding Capacity: **\$220 Million USD.**



Liability Insurance

TREBOTTI Liability Insurance: **\$5 Million USD.**



Consolidated Financial Statements

TREBOTTI Financial Information is part of business group consolidated financial information.



Audited by Deloitte

Yearly Audits perform by **Deloitte**, one of the big four global accountancy firms.



Working Capital (NWC)

Bank Credit Lines, Invoice Factoring, Suppliers and Contractors Factoring & others.

Current Assets

- Current Liabilities

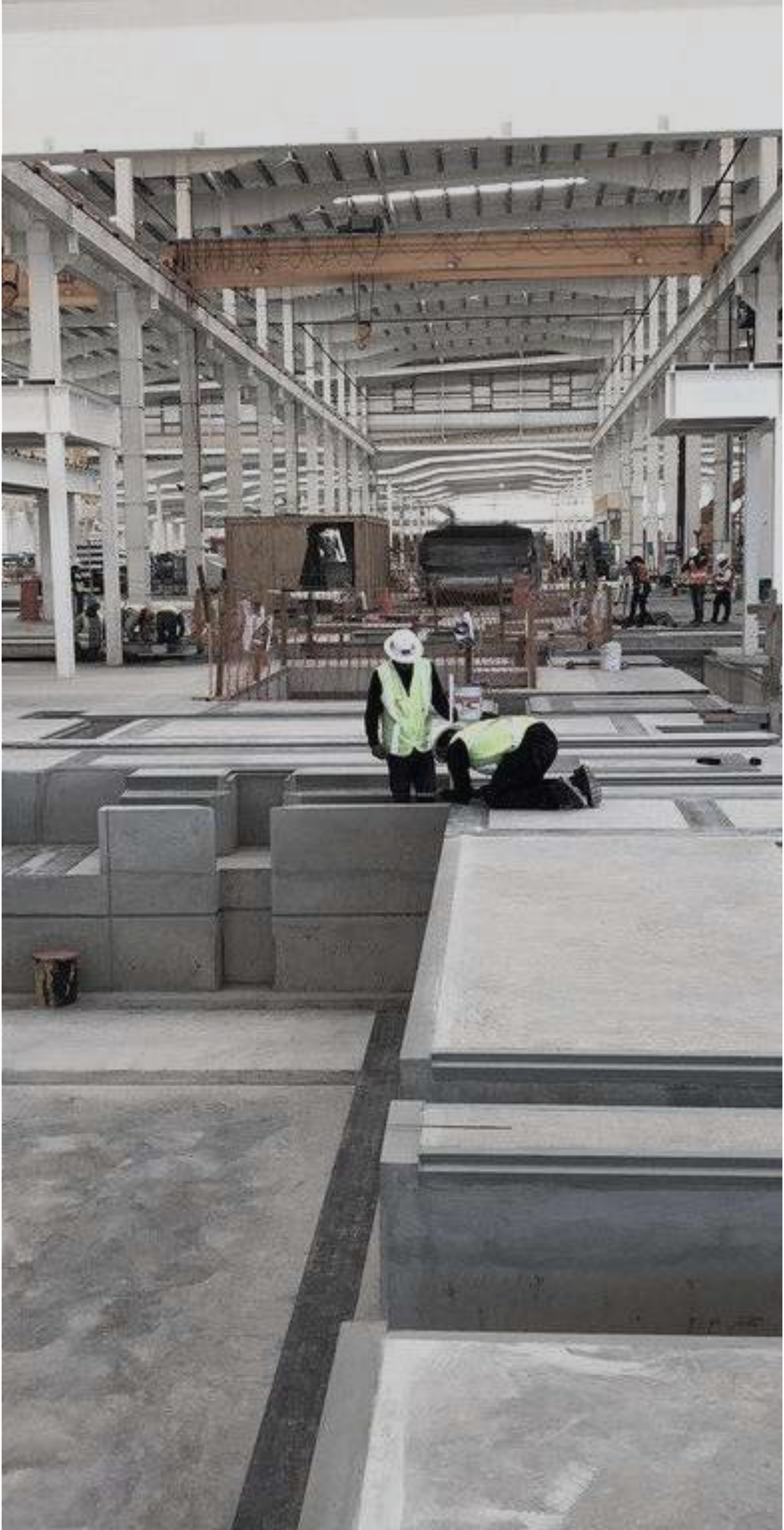
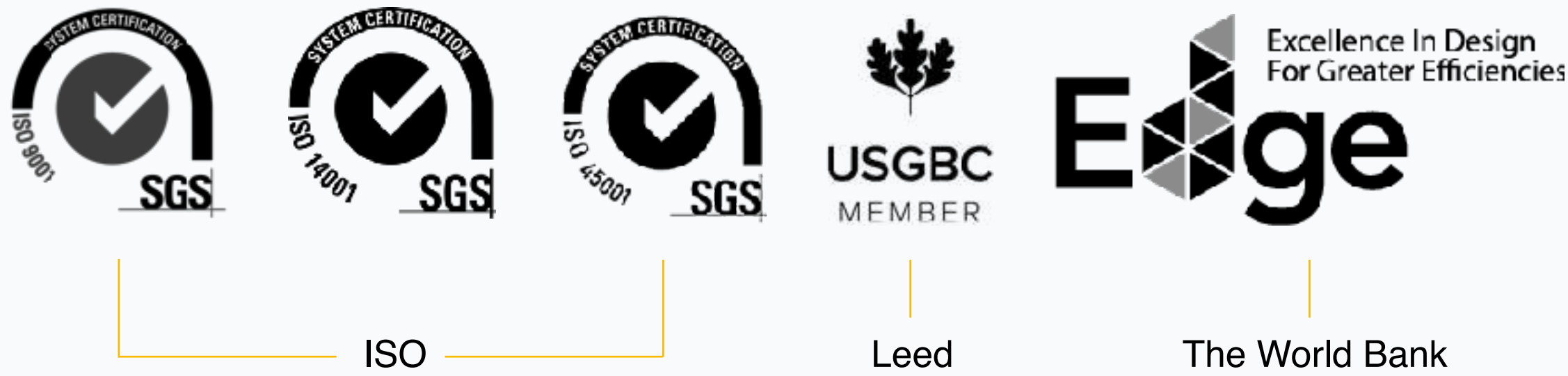
Working Capital

(Property, Inventory, Cash)
(Wages, Rent, Utilities, Taxes)
(Cash, Short-Term Debt, Inventory, Operating Expenses)

* All financial information available upon request.

‘ **trebotti + grupo ittob**
added value.

TREBOTTI aims to provide a practical and workable Quality, Safety and Environmental Management Systems for improving and monitoring all areas of your project.

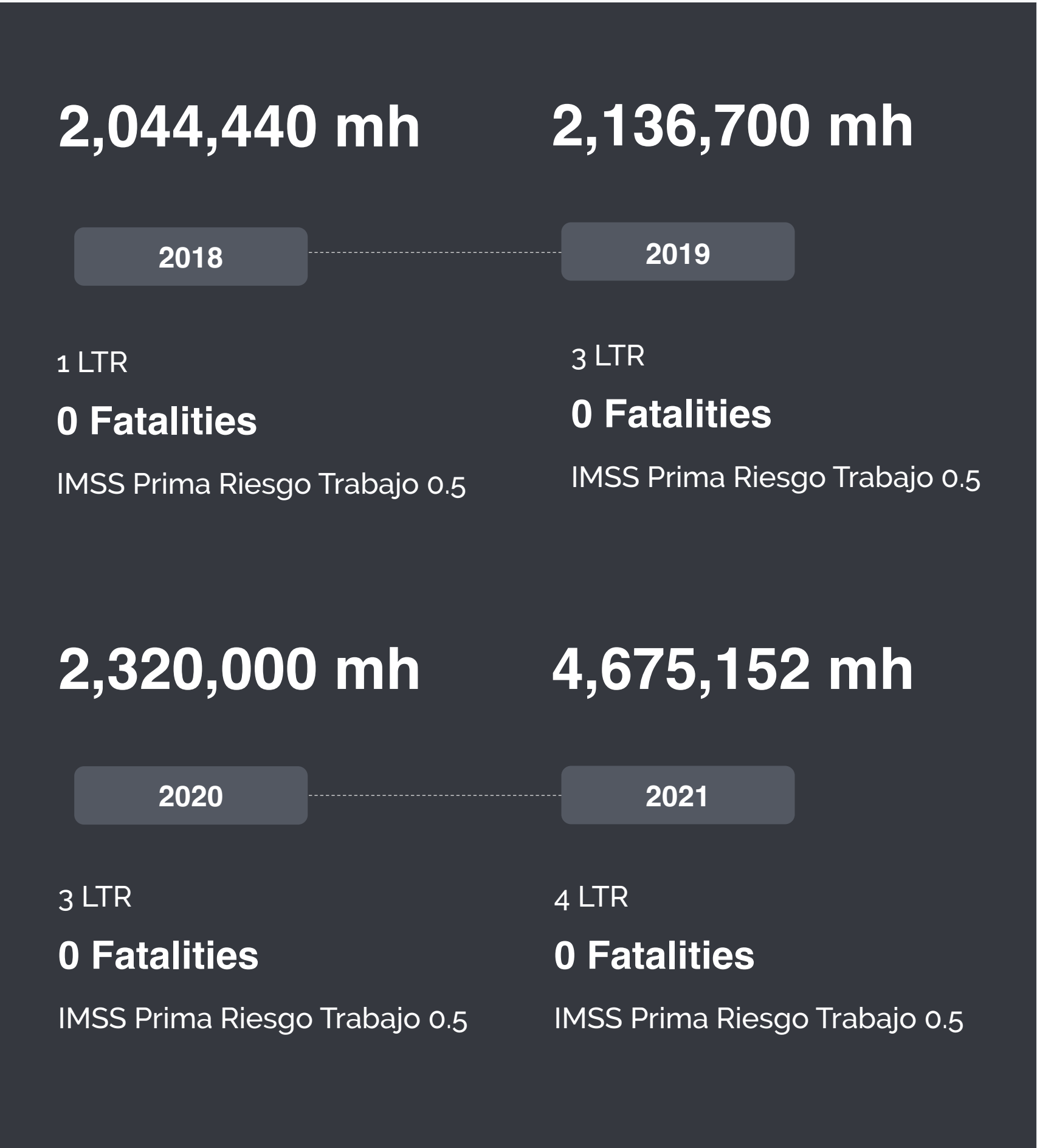


+ certifications.

Additional certifications from our business group.







‘ safety records



' our markets

42 years focused on Design & Build, Turn
Key and General Contractor Projects.

Automotive

General Manufacturing / Industrial

Food & Beverage

Mining

Metals

Commercial / Residential

Petrochemical | Energy

‘ in-house engineering + technology

Conceptual Design, Basic Design, Detail Design and Value Engineering.

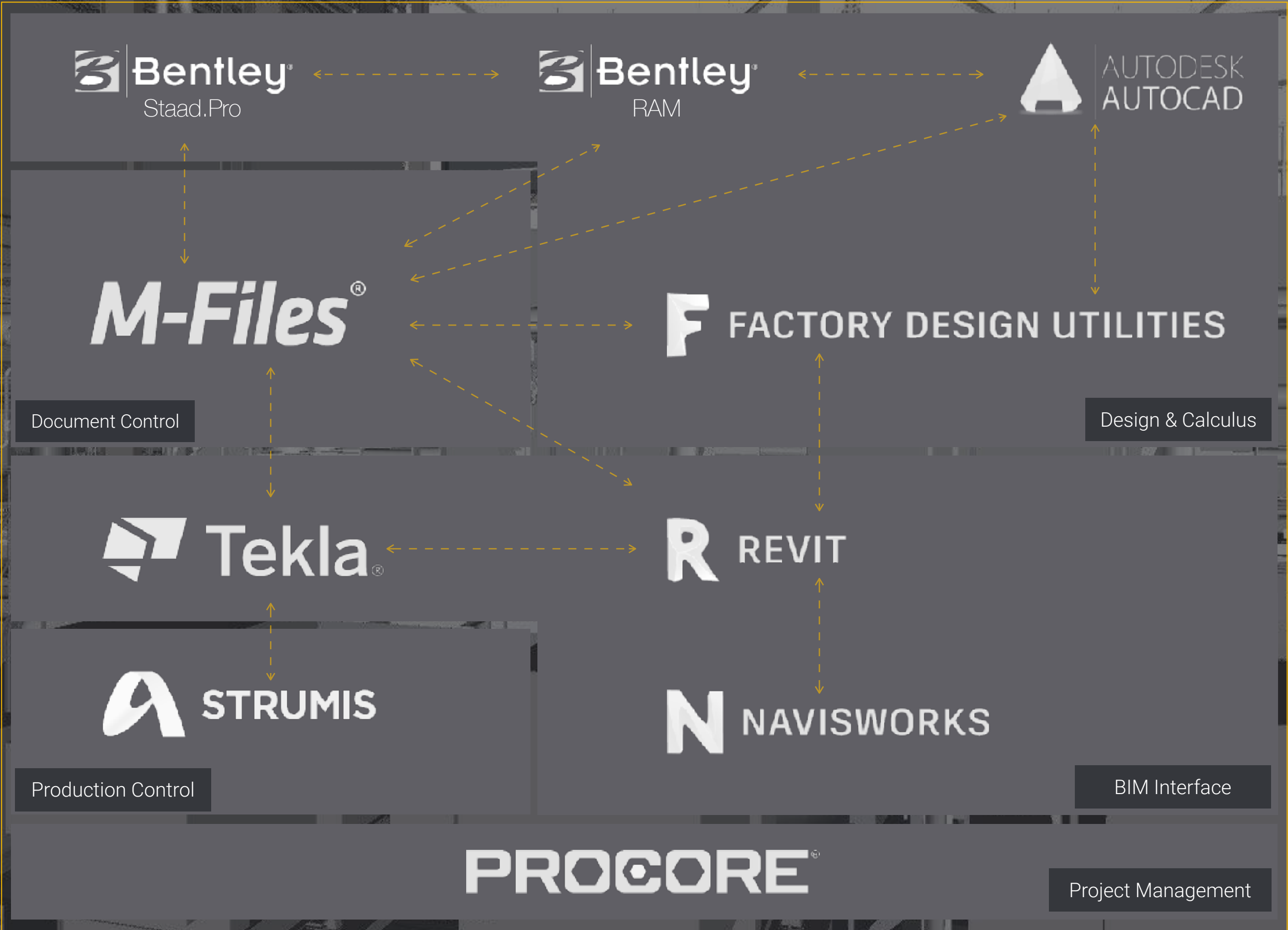
BIM development and integrator.

TREBOTTI - In-house Engineers

30

TEMSA - In-house Engineers

20



* TREBOTTI Engineering and Construction Software Interaction Flowchart

' TREBOTTI Design & Build Fast Track Methodology

Traditional Method



Design & Build Method - Fast Track



Project Duration

Design & Build

Traditional

‘ project control

PMI Methodology

M-Files:

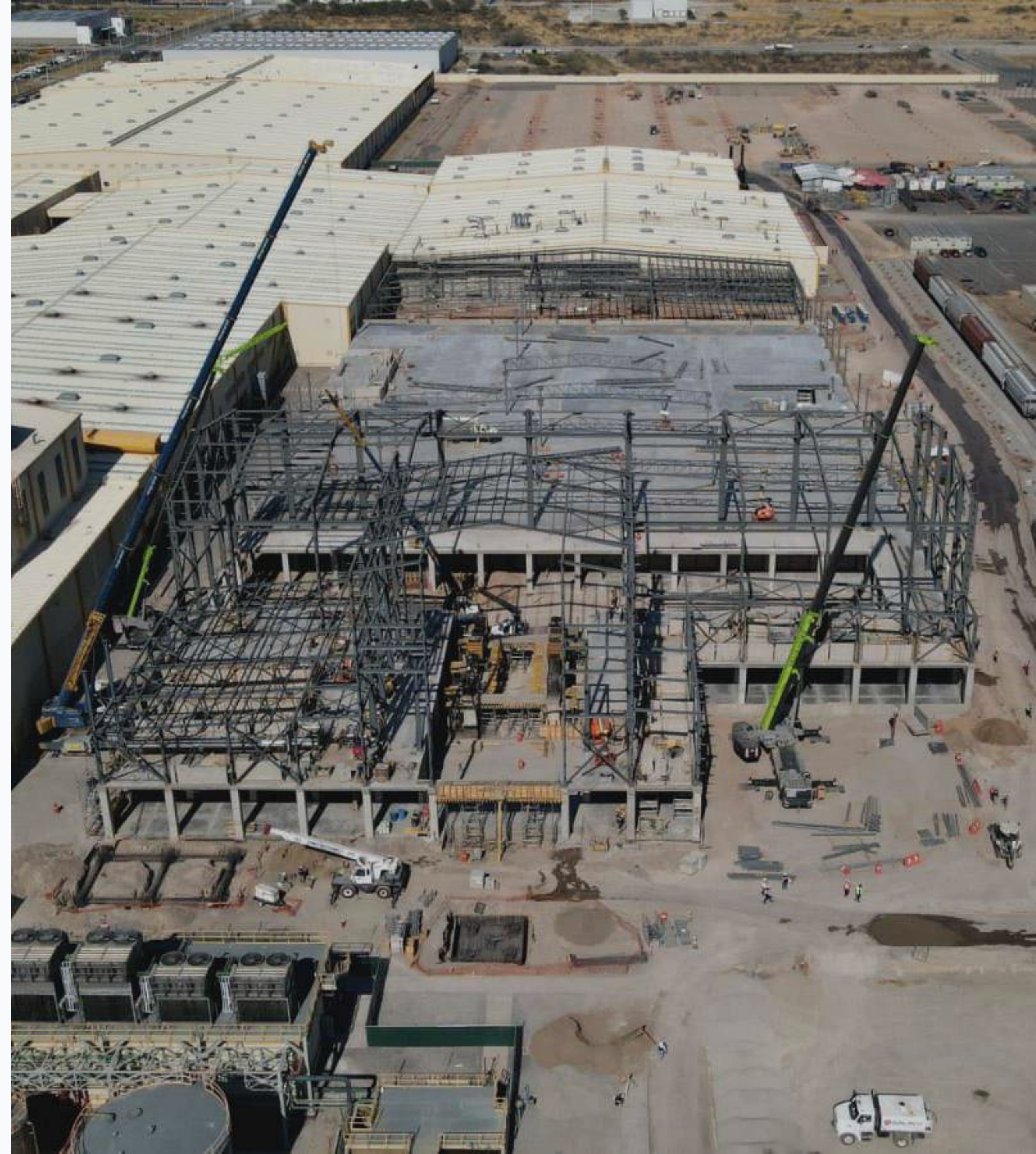
- Resources and Supplies control

Procore:

- Project Control
- Submittals
- Daily Reports

Daily Meetings (Methodologies):

- PMI
- Look Ahead
- Deming Cycle
- Poka Yoke
- Pull Planning (Lean)





- Project Planning
 - Strategy Program
 - Project Supervision | Upper Management
- Visits to the Project to support team onsite:

Construction Manager	Weekly
Operations Manager	Bi-weekly
Director of Operations	Monthly

‘ recent projects



SuKarne
TIF Meat Processing Plant
Design & Build
World's most modern plant in 2016



FCA

FIAT CHRYSLER AUTOMOBILES

CONFIDENTIAL PROJECTS & PHOTOS

AUTOMOTIVE PLANT EXPANSIONS - 9 ON-GOING PROJECTS

DESIGN & BUILD - 100,000 M²

**CIVIL, STRUCTURAL STEEL, ELECTRICAL, MECHANICAL,
UTILITIES, ALL SPECIALITIES**



GRUPO GONDI & WEST ROCK JV

GUADALUPE, NL

DESIGN & BUILD GREENFIELD CARDBOARD PLANT + OFFICES

TURN KEY PROJECTS 26,000 M²



LEGO

DESIGN & BUILD - CIÉNEGA DE FLORES, NUEVO LEÓN

CORPORATE CANTEEN REMODELING + TEMPORARY

CIVIL, STRUCTURAL STEEL, ELECTRICAL, MECHANICAL, UTILITIES



Beiersdorf

CONFIDENTIAL PROJECTS & PHOTOS

BEIERSDORF

SILAO, GUANAJUATO

WAREHOUSE EXPANSION

GENERAL CONTRACTOR - 10,000 M²

CIVIL, STRUCTURAL STEEL, E&M, FPS, FAS, I&C & IT



7 MONTHS EXECUTION
HOFUSAN INDUSTRIAL PARK
DESIGN & BUILD - 25,000 M²
CIVIL, STRUCTURAL STEEL, ELECTRICAL, MECHANICAL,
UTILITIES, ALL SPECIALITIES



ON-GOING PROJECT
POK NUCOR
ACATLAN DE JUAREZ, JALISCO
DESIGN & BUILD - 12,000 M²
GREENFIELD METAL PLANT -DESIGN + BUILD



HAITIAN
DESIGN & BUILD - ACATLÁN DE JUAREZ, JALISCO
CNC PLASTIC INJECTION MANUFACTURING PLANT - 31,500 M²
CIVIL, STRUCTURAL STEEL, ELECTRICAL, MECHANICAL, UTILITIES



GRUPO SIMSA - AWA
TORREON, COAHUILA
ICE FACTORY
DESIGN & BUILD - 6,000 M²



SUMITOMO
GÓMEZ PALACIO, DURANGO & TEPIC, NAYARIT
DESIGN & BUILD GREENFIELD PROJECTS
TURN KEY PROJECTS 15,000 M² & 10,000 M²
6 PROJECTS EXECUTED FOR CUSTOMER



DENSO ASMX
MONCLOVA, COAHUILA - 15,000 M² PLANT EXPANSION
DESIGN & BUILD



ALFAGOMMA
TORREÓN, COAHUILA
WAREHOUSE 12,000 M² - OFFICES 3,000 M²
DESIGN & BUILD



ALTOZANO
HERMOSILLO, SONORA
CONCRETE BASEMENT + PLAZA + OFFICES + GYM
13 LEVEL BUILDING - 45,000 M²



ABINBEV - GRUPO MODELO
 APAN, HIDALGO GREENFIELD BEER PLANT
 DESIGN & BUILD - 35,000 M²



SAVER GLASS
 ACATLÁN DE JUÁREZ, JALISCO
 TURN-KEY PROJECT - DESING & BUILD
 GLASS BOTTLES PLANT GREENFIELD PLANT 78,000 M²



FLEX
 SAN LUIS RIO COLORADO, SONORA
 DESIGN & BUILD 15,000 M²
 DEMOLITIONS, EARTHWORKS, FOUNDATIONS, CIVIL WORK,
 STRUCTURAL STEEL, SIDING, UTILITIES, FINISHES & EXTERIOR
 WORKS



FORD MOTOR COMPANY
 SUBCONTRACTED BY WALBRIDGE
 HERMOSILLO, SONORA
 CIVIL AND STRUCTURAL STEEL 8,000 M²



TOYOTA
APASEO EL GRANDE, GUANAJUATO GREENFIELD PLANT
STAMPING AND ASSEMBLY BUILDINGS
STRUCTURAL STEEL, FABRICATION AND ERECTION



TORREON, COAHUILA
TURN-KEY PROJECT - DESIGN & BUILD
OFFICES + PRODUCTION PLANT
GREENFIELD PLANT 49,000 M²



HYOSUNG
TORREÓN, COAHUILA
TURN-KEY PROJECT - DESIGN & BUILD
GREENFIELD PLANT 34,000 M² + OFFICES



CATERPILLAR
TORREÓN, COAHUILA
TURN KEY PROJECT - SEVERAL AREAS. OVER 10,000 M²



YAZAKI
TORREÓN, COAHUILA
TURN-KEY PROJECT - DESIGN & BUILD
GREENFIELD PLANT 24,000 M2



Constellation
Brands

CONSTELLATION BRANDS (PO FROM GILBANE-ALBERICI)
PIEDRA NEGRAS, COAHUILA
GLASS PLANT
CIVIL WORKS, STRUCTURAL STEEL, E&M



SUKARNE
LUCERO, DURANGO
TURN-KEY PROJECT - DESIGN & BUILD
TIF MEAT PROCESSING PLANT 38,000 M2



Irvin

IRVIN
GÓMEZ PALACIO, DURANGO
DESIGN & BUILD - 10,000 M²
AUTOMOTIVE TIER PROJECT

‘ success cases





Success Case - Customer Needs

5,000 m² in 8 weeks

Initial facility with utilities to manufacture customer airbag prototype and get contract awarded.

After project was awarded rest of facility was executed



- Construction: 31,600 m²
- Offices - two levels: 3,000 m²
- Exterior work: 11,500 m²
- Ventilation pits: 1,000 m
- Execution time: 13 months

Paper Mill Plant

PROJECT OVERVIEW

- **OWNER:** Grupo Gondi | WestRock
- **CUSTOMER ORIGIN:** Mexico | USA
- **LOCATION:** Guadalupe, Nuevo León
- **CONSTRUCTION SIZE:** 20,000 square meters
- **EXECUTION TIME:** 12 Months
- **ON-GOING PROGRESS:** 90% progress
- **DELIVERY METHOD:** D&B - Turn Key Project

GENERAL OVERVIEW

- Design and Build of Cardboard Mill
- Hybrid Structure: Concrete + Structural Steel
- 14 Gantry Cranes
- Controlled environment eliminating thermal bridging

TREBOTTI SOW

- Stock Preparation Building
- Paper Machine Building
- Building Mezzanines
- Buildings Cranes
- Buildings Electrical and Mechanical
- Offices
- Additional change orders to complement scope



Glass and Decoration Plant

PROJECT OVERVIEW

- **OWNER:** SAVERGLASS
- **CUSTOMER ORIGIN:** France
- **LOCATION:** Centro Logistico Jalisco
- **CONSTRUCTION SIZE:** 73,550 square meters
- **EXECUTION TIME:** 9 Months
- **DELIVERY METHOD:** D&B - Turn Key Project
- **VALUE ENGINEERING:** \$3M USD
- **WORKFORCE:** 450 average for 6 months

GENERAL OVERVIEW

- 700 foundation piles at 25 meters deep due to soil condition
- 10,800 m² operations mezzanine at 6.5 m height
- 3,000 tons structural steel
- 1,771 tons reinforcement steel
- 41,000 m³ of concretes (different types)
- Super flat floors for robots
- Roofing, smoke vents, gravity vents
- Electrical and Mechanical

TREBOTTI SOW

Process Building	44,460 m²
Decoration Building	1,650 m²
Finished Product Building	23,055 m²
Empty Pallet Building	2,730 m²
Big Bags Building	1,655 m²



TIF Meet Processing Plant

PROJECT OVERVIEW

- **OWNER:** SuKarne
- **CUSTOMER ORIGIN:** Mexico
- **LOCATION:** Tlahualilo, Durango
- **EXECUTION TIME:** 12 Months

TREBOTTI SOW

- Design & Build: Conceptual, Basic and Detailed Engineering
- Turn Key Project
- Buildings: 30,000 m²
- Roads, parking and maneuver patios: 51,000 m²
- Workforce 1,000 people per day for 6 months

TIF 645
Certified



Success Case - Chinese Customer

PROJECT OVERVIEW

- **OWNER:** Golden Dragon Copper
- **CUSTOMER ORIGIN:** China
- **LOCATION:** Monclova, Coahuila
- **SIZE:** 72,000 square meters
- **EXECUTION TIME:** 12 Months
- **DELIVERY METHOD:** Turn Key Project
- **WORKFORCE:** 1,000 for 6 months

SCOPE OF WORK

- Earthworks 300,000 m³
- 450 Deep pile foundations
- Over 36,000 m³ of concrete.
- 3,600 tons structural steel - bolted rigid frames
- Concrete bases for production lines and ovens using more than 12,800 m³ of concrete
- 4.4 km of tunnels and tranches for utilities
- 48,000 m² laser leveled floors
- Concrete Mezzanine
- Electrical & Mechanical
- FPS
- Gantry Crane

CONCRETE ENGINEERING

The main challenge of the project was the civil work needed for the copper foundry and production lines. TREBOTTI Engineering team in collaboration with CEMEX Engineering came up with a solution for each particular need using special concretes:

- Antibacterial Cement
- Auto sealant Cement
- Low contraction Cement
- Self-compacting
- Fluid cement
- Grout - over 20 tons

For this solution and performed work TREBOTTI was awarded with the following two recognitions:





“I have no special talents. I am only passionately curious”

Albert Einstein



TREBOTTI

CIA. CONSTRUCTORA D E S D E 1 9 8 0



USGBC
MEMBER

TREBOTTI S.A. de C.V.

P: +52.871.126.1168 | E: ventas@trebotti.com.mx

<http://www.trebotti.com.mx>

Piedras Negras 422 - Parque Industrial Carlos A Herrera - Gómez Palacio, Durango - 35079 - México

