



GROB

Company Presentation

Competence in Advanced Technologies Worldwide

A Success Story...

Over Four Generations!



Dr. Ernst Grob

Founder and Managing Director
of Ernst Grob Werkzeug- und
Maschinenfabrik

1926–1952



Dr. Burkhard Grob

Managing Director and
Supervisory Board Chairman of
GROB-WERKE

1952–2016



Our Company History Started Over 95 Years Ago



Mindelheim, Germany

Output: EUR 856 million

Employees: 4,701

(in Mindelheim since 1968)

1926

Our Company History Started Over **95** Years Ago



São Paulo, Brazil
Output: EUR 62 million
Employees: 518

1956



Bluffton, USA
Output: EUR 129 million
Employees: 611

1983

Our Company History Started Over **95** Years Ago



Dalian, China

Output: EUR 104 million

Employees: 806

2012



Pianezza, Italy

Output: EUR 16 million

Employees: 83

2017

GROB GROUP



5

PLANTS

15

SALES AND
SERVICE BRANCHES

7,000

EMPLOYEES WORLDWIDE

Output in Mio. EUR by manufacturing plant

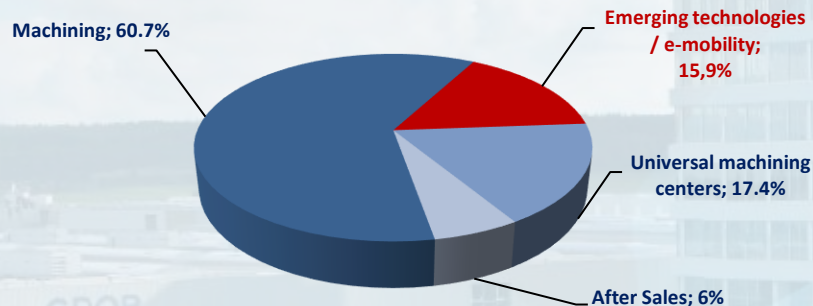
2009/10 to 2021/22



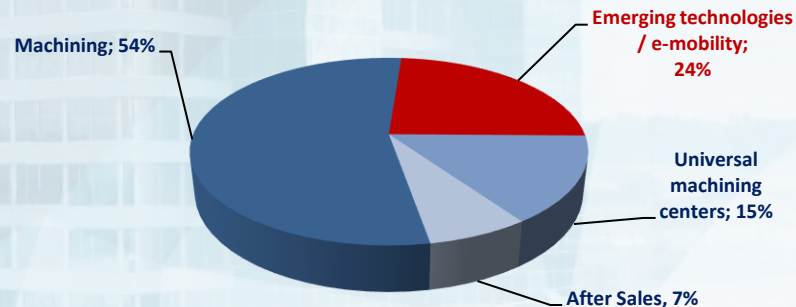
Output distribution according to product range

2018/19 to 2021/22

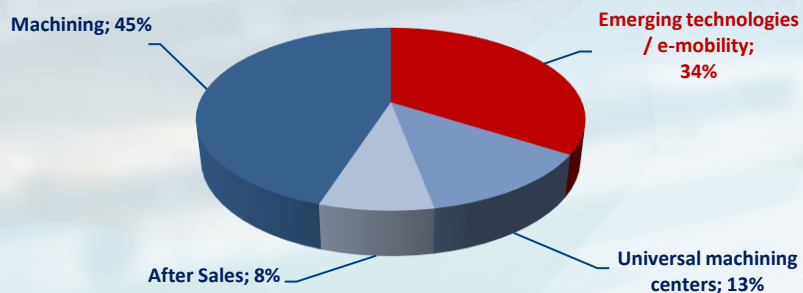
Business Year 2018/2019



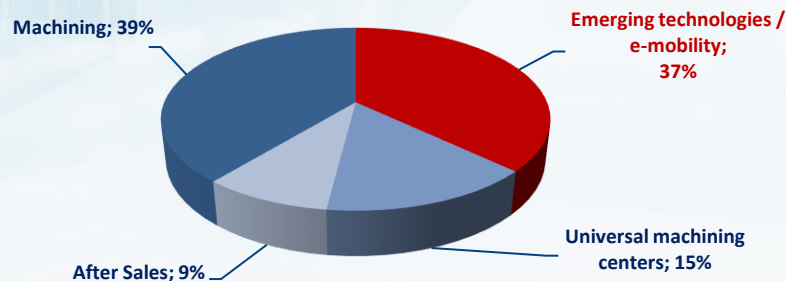
Business Year 2019/2020



Business Year 2020/2021



Business Year 2021/2022 (Forecast)



Transformation in the Machining

Part type and quantity change

Combustion engine



Cylinder head cover

Cylinder block

Clutch housing

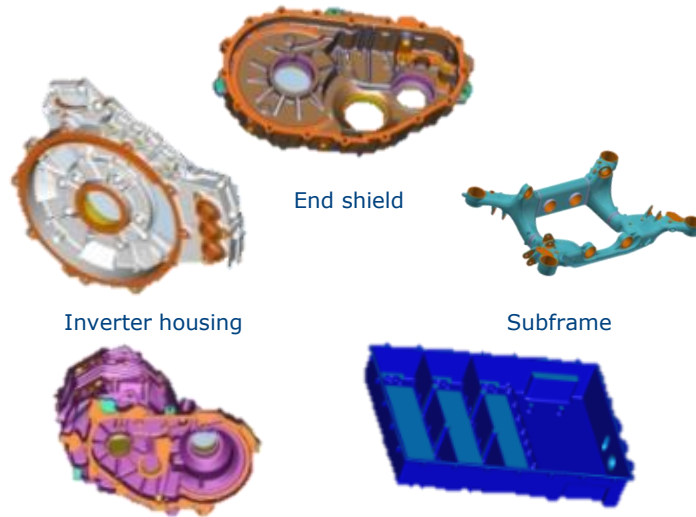
Cylinder head

Transmission case

Oil pan

Reduction
→
of 46 %

electric motor



End shield

Inverter housing

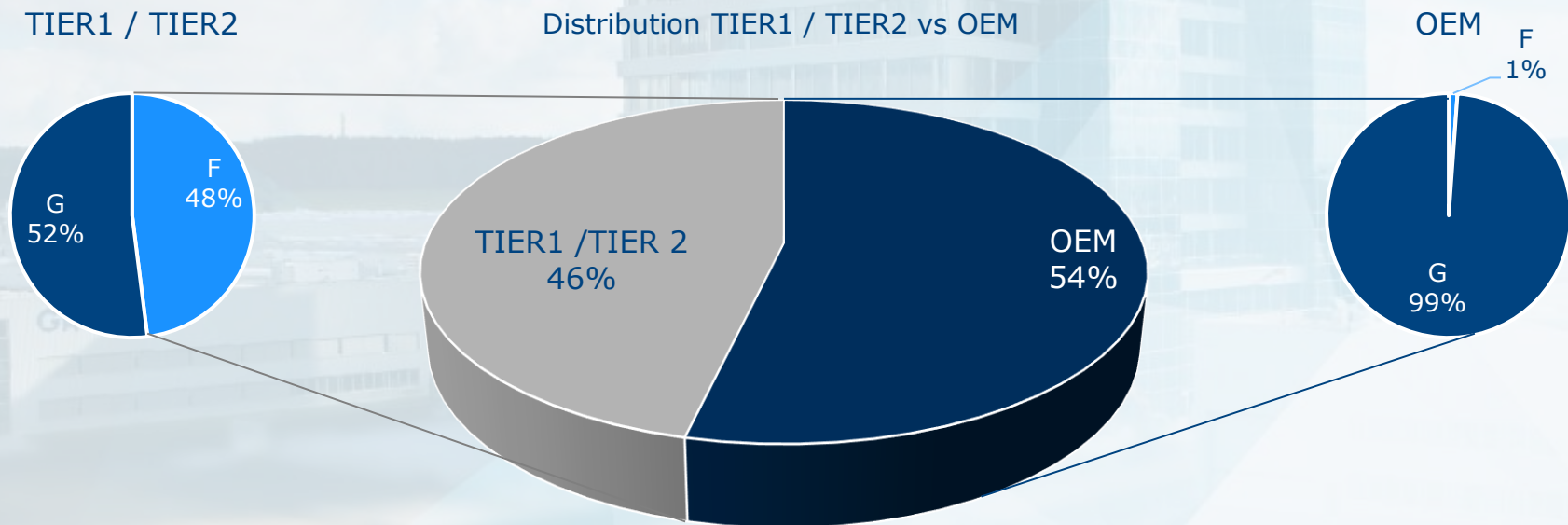
Subframe

Stator housing

Battery housing

Transformation in the Machining

Ratio between OEM and TIER 1 / TIER 2 supplier



Shift to Tier 1&2 market

- „Key Components“ shift from OEM to TIER1 / TIER2 suppliers
- New E-Mobility and chassis parts are delivered by TIER1 / TIER2

GROB Product Overview



1. System business



2. Universal machines



3. Assembly systems



4. E-Mobility



5. Automation



6. GROB-NET⁴Industry



7. Used machines



GROB Industry Range

Precision at the highest level

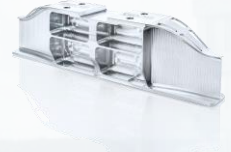
Sectors



Aerospace



Turbine blade



Structural component



Automotive



Subframe



Stator housing



Mechanical engineering



Vise bottom part



Gear wheel



Medical technology



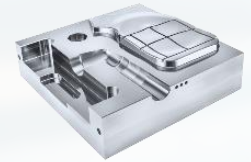
Scalpel holder



Bone insert



Die and mold industries



Mold insert



Bottle mold



Energy technology



Francis turbine wheel



Centrifugal compressor

Starting into a digital future with GROB-NET⁴Industry

Simulation & Training

GROB⁴Simulate

Complex processes & parts easily simulated

GROB⁴Coach

Programming, simulation, training

Smart UI & Automation

GROB⁴Pilot

Multi-functional, interactive machine connection

GROB⁴Automation

Intuitive production control software for unmanned operation

Service & Availability

GROB⁴Track

Machine axes in view at all times

GROB⁴Optimization

Extend the service life of your motorized spindle

GROB⁴Care

Your service and maintenance portal

GROB⁴Line

The machine in sight via smartphone

GROB⁴Analyze

Feedback from the machine for your CIP process

GROB⁴Analyze OfficeClient

Easily analyze cloud data with MS Office

GROB⁴OEE

OEE figure output under consideration of the shift plans

GROB⁴Connect

Connection of the real world around the ERP system

GROB⁴Interface

Easy route to machine communication

GROB⁴Portal

The secure cloud for the industry

Productivity

Networking
MES On Site & Cloud



Other Technologies

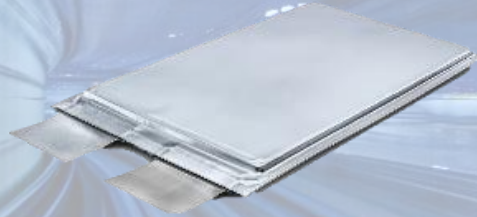
...a glance into the future

Additive Manufacturing



**First pre-series system
planned for 2021/2022**

Battery Cell



**Completion of a pilot plant for
lamination processes
planned for 2021**

Fuel Cell



**Completion of a pilot plant
planned for 2021/2022**



GROB MEXICO

Excellence in advanced technology worldwide



Jörg Wagner



Key Facts

- Founded:
 - Grob Mexico was founded in July 2000 in the city of Saltillo, but strategically relocated to Querétaro in the year 2011.
- Number of employees:
 - As of November 2021, Grob Mexico currently employs more than 50 persons in engineering, field service and administrative.
- Turnover:
 - Grob Mexico's turnover for FY2019/20 was of more than 9.250.000 €
- Grob Presence:
 - Currently there are more than 865 installed spindles across the country and more than 55 special purpose machines and transfer lines.



Serviceportfolio / Products

- GROB has a strong presence in Mexico's Automotive Companies.
- GROB Mexico has over 40 technicians distributed in the country. All technician's native language is Spanish and all of them are fluent in English as well.
- Customer's training & production support done by GROB Mexico.
- After Sales Service Solutions managed locally.
- Fast response to spare parts & service support.
- Grob Mexico's local Spindle Repair Shop guarantees faster responses.
- Grob Mexico's Showroom has capability for prototyping, and complete turnkey solution developments.



Motor Spindle Repair Shop since 08/2020

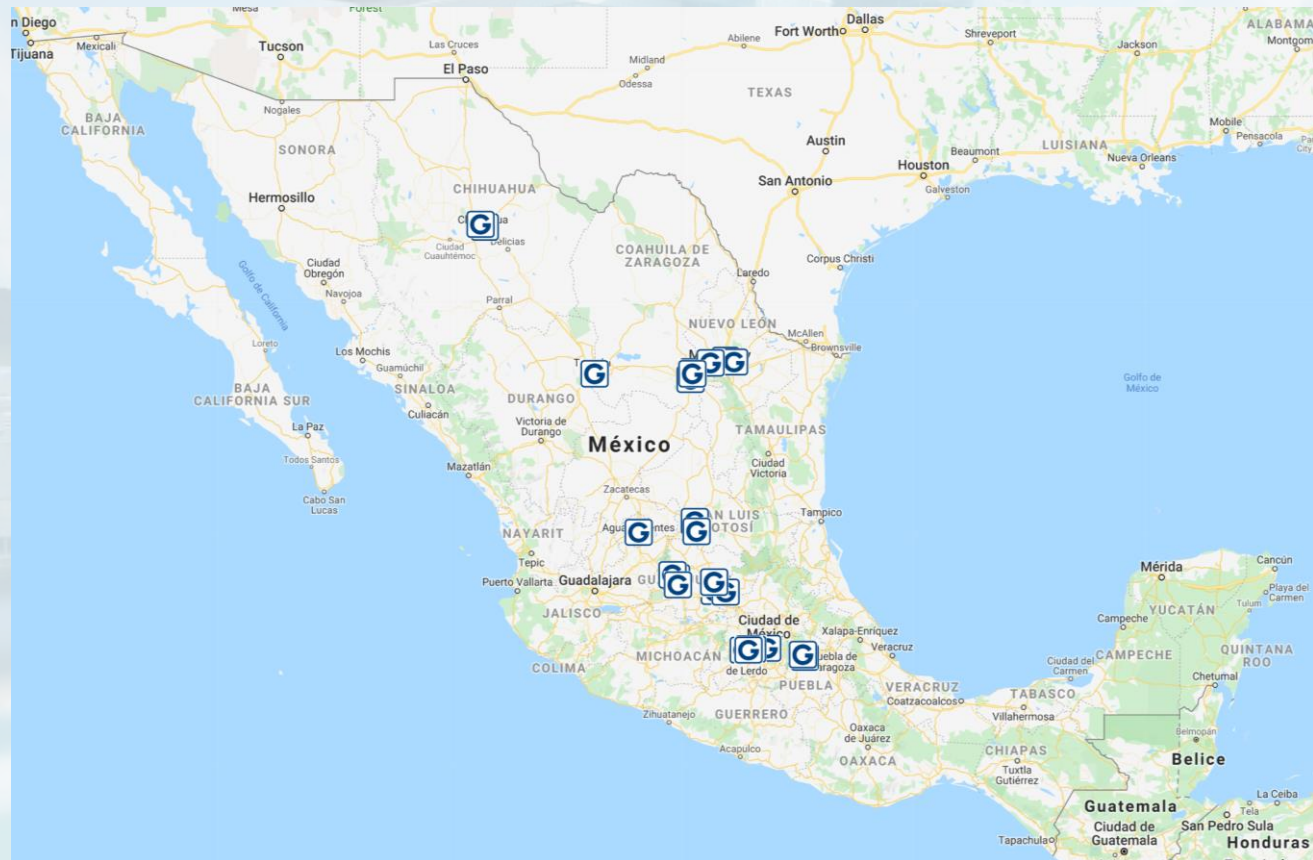
- Advantage for our customers giving a faster and reliable in-house repair process, assuring quality and customer satisfaction.
- Large stock of Motor Spindles available.



GROB Mexico



Grob Mexico GXQ	Installed Spindles
Systems Machines	609
Universal Machines	244
Total	853



BOSCH



JOHN DEERE



HYUNDAI
WIA



TREMEC



ThyssenKrupp

MEGGITT



THANK YOU
for your attention!





Your Reliable Partner for
the Future



www.grobgroup.com