



# ForeFront Power

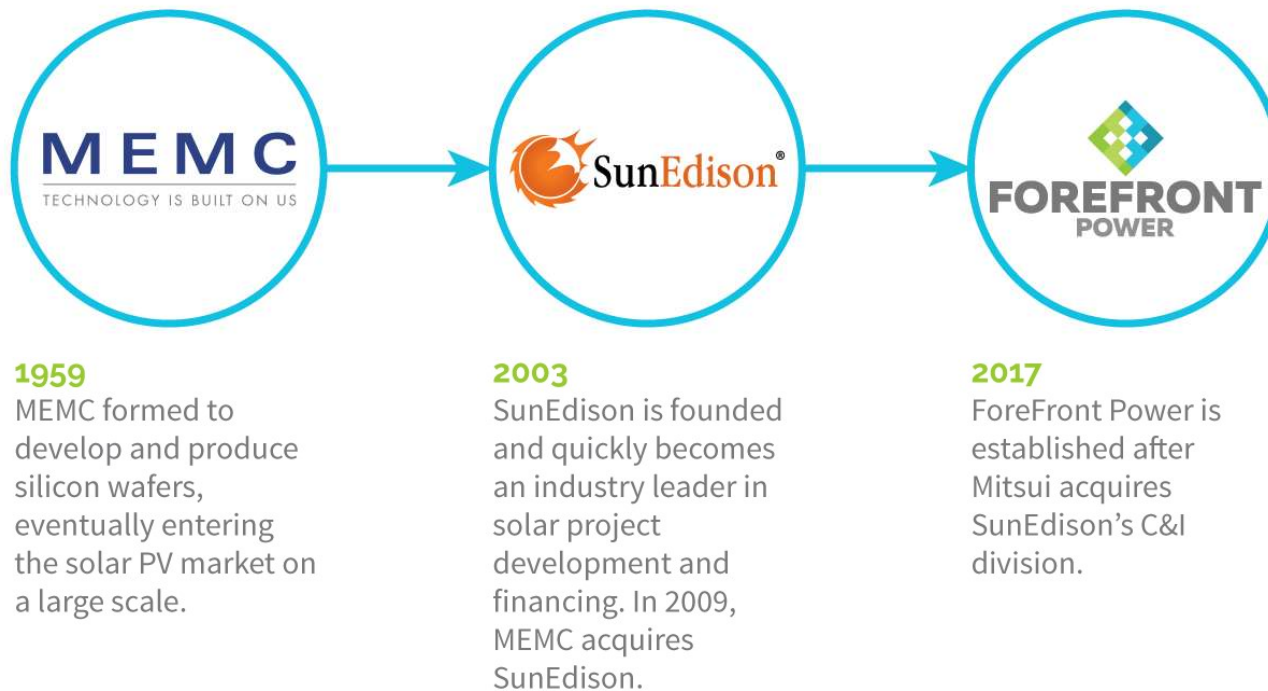
---

Renewable Energy Solutions



# ForeFront Power Overview

# A story of progress in the industry.



# Strong Sponsorship and Commitment



**MITSUI & CO.**

- Mitsui & Co. is a leading Japanese conglomerate with a diversified portfolio of businesses in a broad range of industry sectors, such as Metals, Machinery & Infrastructure, Chemicals, Energy, Lifestyle and Innovation.
- Infrastructure development and energy solutions has been one of the core businesses at Mitsui, and Mitsui currently possesses a total of 40GW(Gross)/11GW(net) power generating assets worldwide.

ForeFront Power is currently evolving into a total energy solutions provider. ForeFront Power's origination capabilities combined with Mitsui's financial strength and globally-diversified, customer / partner base create a unique and competitive market presence for growth.

**\$112.8**

billion in total assets\*

**\$41.2**

billion in total equity\*

**\$5.9**

billion in core operating cash flow\*

**A/A3**

S&P/Moody's\*

**130**

offices across 63 countries

**44,509**

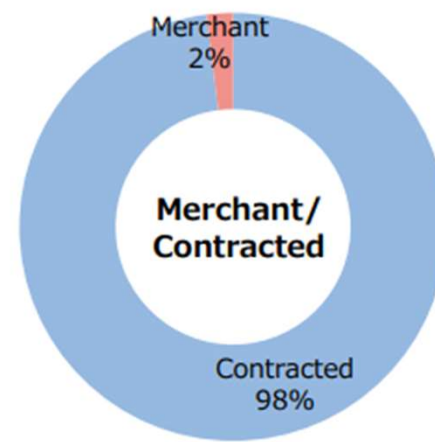
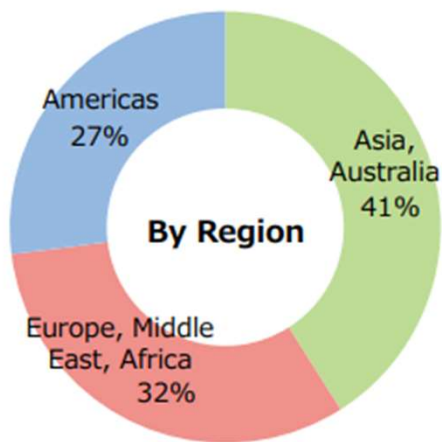
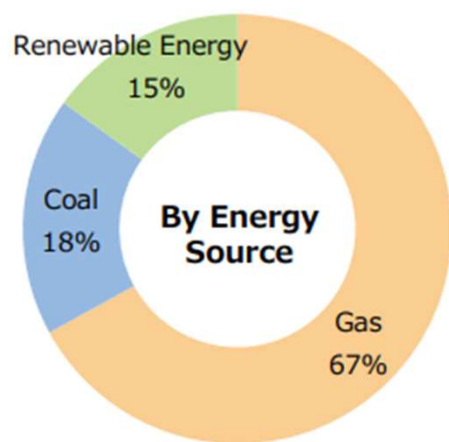
Employees

*\*As of March 31, 2021*

# Mitsui's Global Generation Portfolio

Net generation capacity (Mitsui's share): **11.0GW**  
(Gross generation capacity: 40GW)

(As of end of March 2021)



## Mitsui & Co. Infrastructure Solutions



MITSUI & CO.  
Infrastructure Solutions

**MITInfra is a leading company in development, power asset operation and wastewater treatment in the Americas**



### Key Activities

- Project Development
- O&M
- Asset Management
- Market Representation
- Qualified Supply

### MITInfra in numbers:

- +300 employees
- 3 GW in power assets
- 400mmbtu gas pipeline
- 2<sup>do</sup> largest private conventional energy operator in Mexico
- Over 34 WWT projects
- Over 30k lps of treated water
- BOT of the largest WWTP of latinamerica

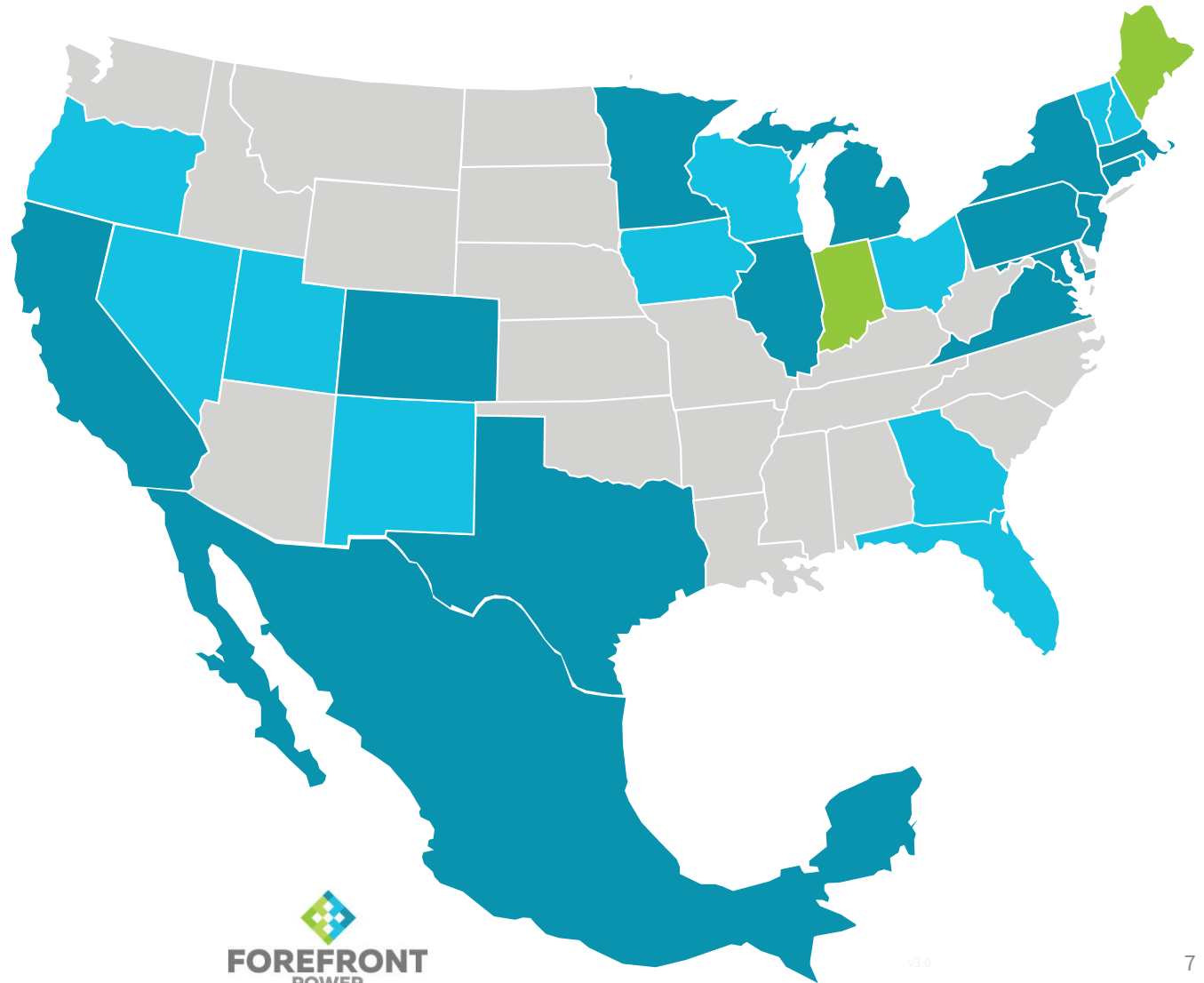
# The ForeFront Power Footprint

**~200 MWdc**

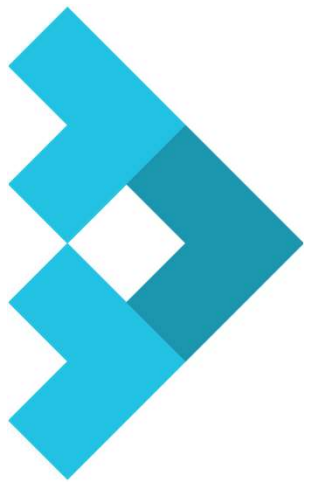
entered operation  
since 2017

**>550 MWdc**

in development



CONFIDENTIAL



# Solutions to suit your needs.

ForeFront Power offers customized renewable energy solutions to business, public sector, and wholesale power customers.



# On-site renewable solutions.

## GROUND MOUNTED

---

- Traditionally used in utility-scale projects
- Currently the lowest cost for solar deployment
- When adjacent to buildings, can be coupled with other on-site DG to maximize footprint



## ROOFTOP

---

- Most common among commercial real estate
- Relies on viability of roof structure
- Systems configured to avoid shaded areas and maximize energy output
- Highly visible commitment to sustainability



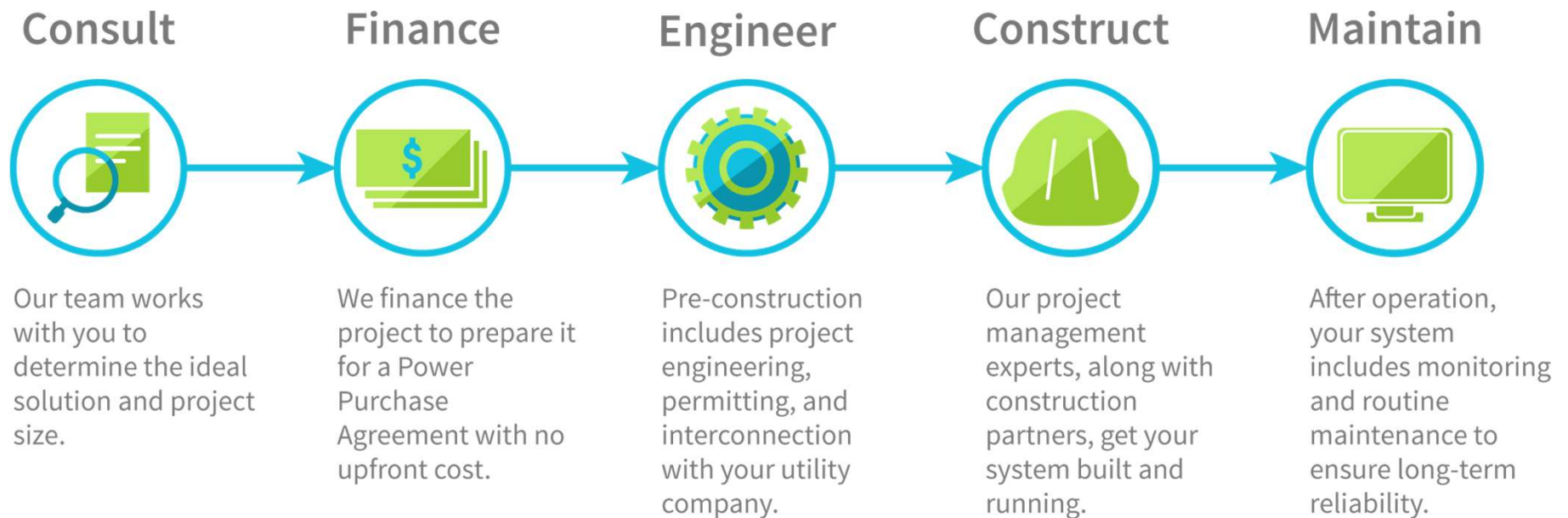
## PARKING CANOPY

---

- Used for covered parking and walkways
- Can be coupled with Vehicle Charging
- Adds value to the property in the form of convenience
- Signage coupled with structures add to branding



# Controlling the Development Life Cycle





# Benefits for the Customer

## **Cost Reduction**

- Cost reduction by utilizing solar

## **Going Green**

- Utilization of renewable clean energy
- Enhancement of corporate branding

## **No Upfront Cost**

- No upfront cost / no initial investment
- Benefit to be provided through a service contract

## **No Impact on Operation**

- No impact on customer's operation





# CONTACT INFORMATION

Our leaders for all projects associated with the customer are included below.

Pablo is the Business Development Director for our Mexico team where he leads new solar power sales and management of current accounts. Pablo will be the primary contact for the customer's team and his deep industry knowledge will assist them throughout the process.

Fermín Pérez is the Commercial Manager for our Corporate Accounts. His experience with global corporate accounts ensures the success of these projects.



Pablo Rivero  
Business Development Director  
(521)-55-3939-2552  
[privero@forefrontpower.com](mailto:privero@forefrontpower.com)



Fermín Pérez  
Commercial Manager  
(521) 55-2335-3490  
[fperez@forefrontpower.com](mailto:fperez@forefrontpower.com)



# Some of our recent Projects



## Aisin Illinois | 3 Manufacturing Plant Rooftops | Marion, IL | 1.1 MW



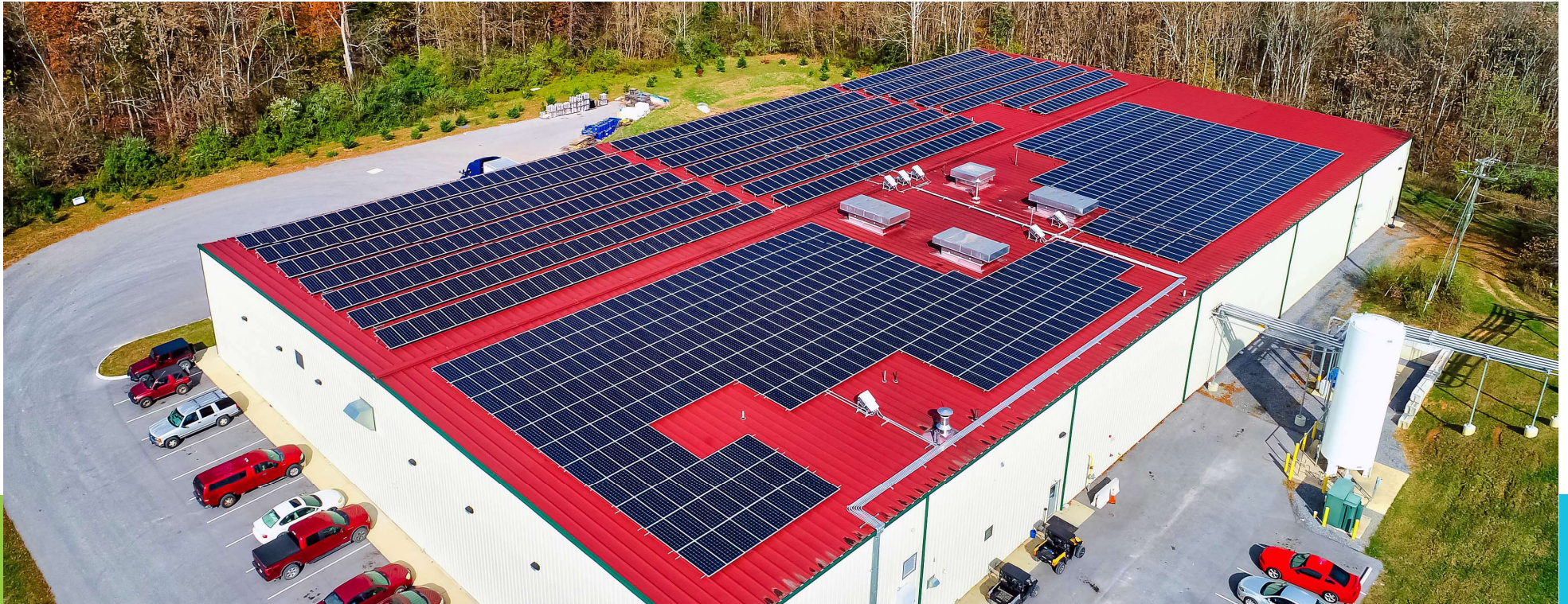
CONFIDENTIAL



14



## Devils Backbone Brewing Company (AB InBev) | Lexington, VA | 453 kW



CONFIDENTIAL



15



## State Center Community College District (Fresno) Fresno, CA | 2,409 kW



CONFIDENTIAL





## Hollygrove Community Solar | Red Creek, NY | 3 MW



CONFIDENTIAL



## Explanada Shopping Mall | Culiacán, Sinaloa | 1.0 MW



CONFIDENTIAL





# Cosmetic Colors | Rooftop and Carports | Toluca, Edomex | 213 kW



CONFIDENTIAL



## Kaki | Rooftop and Ground mounted | Acanceh, Yucatán | 2.2 MW



CONFIDENTIAL





**FOREFRONT**  
**POWER**