



AUTOMOTIVE  
**FINISHING**

☎ P. (800) 535 – 8196

📠 F. (909) 419 – 7020

🌐 [SPRAYTECH.COM](http://SPRAYTECH.COM)



# JUNAIR SERIES

## SPRAY BOOTHS



### A WINNING COMBINATION OF SUPERIOR PERFORMANCE & ENERGY EFFICIENCY

The JUNAIR Series Spray Booths will exceed all of your expectations. These fine booths have been designed with great attention to detail and are built to provide years of worry-free operation. This booth truly sets the industry standard when it comes to a high production tool. There is no booth in the industry capable of handling the workload that a Junair booth can.

### QADS AIR MOVEMENT

Standard on the Junair Series. The QADS system introduces additional airflow from the corners of the spray booth cabin. The clean, filtered and heated air delivered by QADS provides the ideal environment for fast, CONTROLLED flash off of waterborne paints as well as low VOC top coats.



Junair spray booths ensure that your product will be sprayed, flashed, and cured faster while using less energy than any other system. Standard features include user programmable controls, allowing unparalleled process customization utilizing PLC and HMI technologies through a simple-to-use touch screen interface.

JUNAIR BOOTHS DELIVER THE HIGHEST QUALITY  
PAINT FINISH AT THE LOWEST COST PER UNIT.

### RADIANT LIGHTING

The Junair Series boasts the latest technology in lighting with the most efficient and reliable LED lighting in the industry. Our 5th Generation LED Light fixtures and our high frequency electronic components combine to reduce energy costs. Lighting levels of up to 1500 lumens are consistently achieved anywhere in the booth.

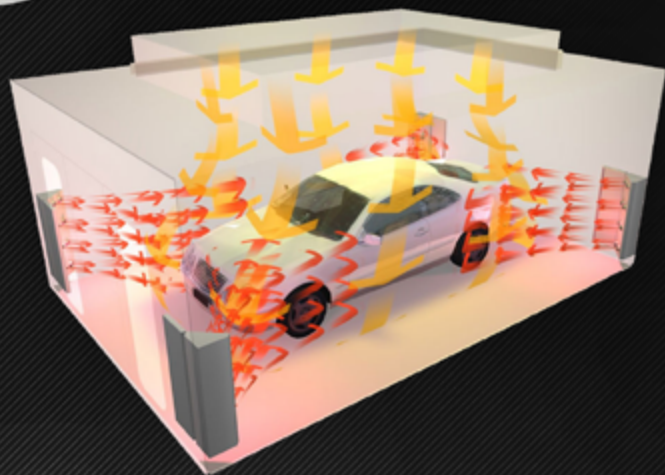


Shown with optional  
windowed side panels



# QUALITY WITHOUT COMPROMISE

## UNSURPASSED PERFORMANCE



### UNMATCHED AIRFLOW

The Junair Series incorporates an extra wide fully filtered ceiling providing superior downdraft airflow. Overspray is removed from the booth up to 50% faster than any other booths equipped with standard sized ceiling filters.



### EXTREME ENERGY EFFICIENCY

Other booths claim to save energy by including an additional feature or two. Through the use of the Fuel Saver mode, the Junair booths operate for less than HALF of the cost of other booths on the market. The Junair Series utilizes energy efficient twin variable frequency drives (VFD's) with four motor speeds. The drives communicate with the booths' control system resulting in tiered baking capabilities so they operate exactly as you want them to for every finish. This translates to superior quality of work, increased throughput in the shop, and energy savings that you can actually see.



## JUNAIR SERIES - SIZING & SPECS

JA509 5 Series	241 24' Downdraft	271 27' Downdraft	301 30' Downdraft
<b>Light Fixtures</b>	(18) Industry-Leading LED Light Fixtures	(20) Industry-Leading LED Light Fixtures	(20) Industry-Leading LED Light Fixtures
<b>Inside Dimensions</b>	24'L x 14'W x 9'H	27'6"L x 14'W x 9'H	30'1"L x 14'W x 9'H
<b>Outside Dim. w Mech.</b>	24'5"L x 19'10"W x 13'7"H	27'11"L x 19'10"W x 13'7"H	30'6"L x 19'11"W x 13'8"H
<b>Entrance Door Opening</b>	9' 11 7/8" W x 8' 11 5/8" H	9' 11 7/8" W x 8' 11 5/8" H	9' 11 7/8" W x 8' 11 5/8" H
<b>Heater</b>	1M BTU Direct Drive 10HP VFD Controlled	1M BTU Direct Drive 10HP VFD Controlled	1M BTU Direct Drive 10HP VFD Controlled
<b>Exhaust</b>	Direct Drive Fan 10HP VFD Controlled	Direct Drive Fan 10HP VFD Controlled	Direct Drive Fan 10HP VFD Controlled
<b>CFM</b>	15,200	15,400	16,800

JA309 3 Series	241 24' Downdraft	271 27' Downdraft	301 30' Downdraft
<b>Heater</b>	1M BTU 10HP VFD Controlled	1M BTU 10HP VFD Controlled	1M BTU 10HP VFD Controlled
<b>Exhaust</b>	32" Fan 7.5 HP VFD Controlled	32" Fan 7.5 HP VFD Controlled	32" Fan 7.5 HP VFD Controlled
<b>CFM</b>	15,400	15,400	15,400

Junair 5 Series and 3 Series booths use very similar cabin constructions. The models differ when it comes to mechanicals and CFM.

## 5 SERIES STANDARD FEATURES:

- Fastest over-spray clearing - QADs Equipped
- iSystem Controls – Custom Automation
- Direct Drive Blower/10HP/15,200 CFM\*
- Tri-Fold Entrance Door Opening 10'W x 9'H
- (3) Windows on Entrance Doors 32" W x 82" H
- Dual Panic Bars on Front Doors For Ease Of Egress
- Wide Filtered Ceiling with Plenum Baffling
- Entire System Pre-Wired for Easy Field Assembly
- White Powdercoated Dual Skin Galvanized Steel
- Rock Wool Insulated Panels
- (1) Personnel Door w/ Window
- ETL US & Canada Listed Spray Booth Package

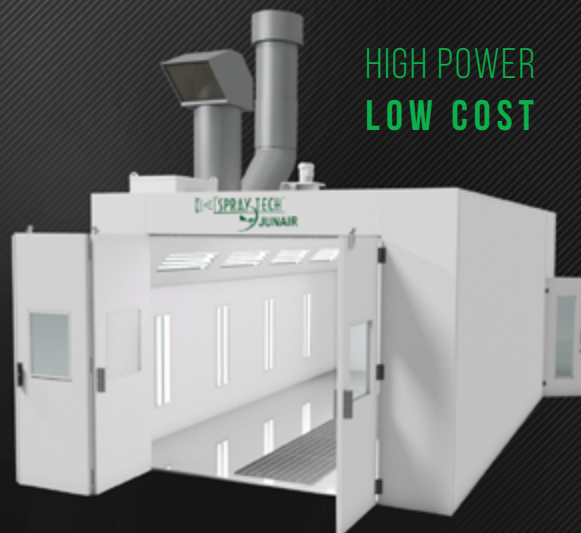


# THERMAIRE SERIES

## SPRAY BOOTH PACKAGES

### THERMAIRE FULL DOWNDRAFT [INSULATED]

TIDDV	241 24' Full Down	271 27' Full Down	301 30' Full Down
<b>Light Fixtures</b>	(16) Industry-Leading LED Light Fixtures	(18) Industry-Leading LED Light Fixtures	(20) Industry-Leading LED Light Fixtures
<b>Inside Dimensions</b>	24'L x 14'W x 9'H	27'6"L x 14'W x 9'H	30'L x 14'W x 9'H
<b>Outside Dim. w Mech.</b>	24'4"L x 17'10"W x 11'10"H	27'10"L x 17'8"W x 11'10"H	30'1"L x 17'4"W x 11'10"H
<b>Entrance Door Opening</b>	9'H x 9'4"W (Tri-Fold)	9'H x 9'4"W (Tri-Fold)	9'H x 9'4"W (Tri-Fold)
<b>Heater</b>	1M BTU 7.5 HP Motor	1M BTU 7.5 HP Motor	1M BTU 7.5 HP Motor
<b>Exhaust</b>	32" Fan 5 HP VFD Controlled	32" Fan 5 HP VFD Controlled	32" Fan 5 HP VFD Controlled
<b>CFM</b>	13,440	14,200	14,700



HIGH POWER  
LOW COST



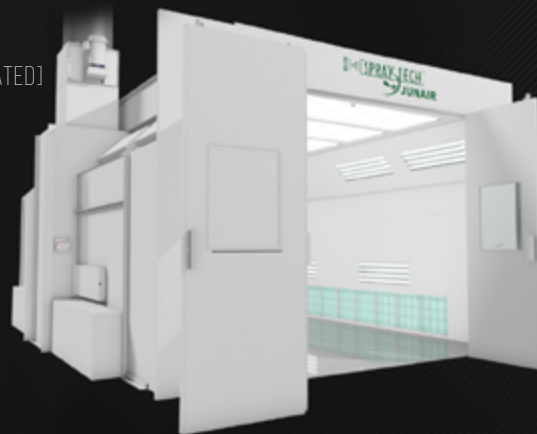
### THERMAIRE FULL DOWNDRAFT [NON-INSULATED]

TIDPE	242 24' Full Down	271 27' Full Down	301 30' Full Down
<b>Light Fixtures</b>	(16) Industry-Leading LED Light Fixtures	(16) Industry-Leading LED Light Fixtures	(16) Industry-Leading LED Light Fixtures
<b>Inside Dimensions</b>	23'10"L x 14'W x 9'H	27'L x 14'W x 9'H	30'L x 14'W x 9'H
<b>Outside Dim. w Mech.</b>	24'2"L x 17'8"W x 11'10"H	28'6"L x 17'10"W x 11'10"H	30'4"L x 17'4"W x 11'10"H
<b>Entrance Door Opening</b>	9'H x 9'4"W (Tri-Fold)	9'H x 9'4"W (Tri-Fold)	9'H x 9'4"W (Tri-Fold)
<b>Heater</b>	1M BTU 7.5 HP Motor	1M BTU 7.5 HP Motor	1M BTU 7.5 HP Motor
<b>Exhaust</b>	32" Fan 5 HP VFD Controlled	32" Fan 5 HP VFD Controlled	32" Fan 5 HP VFD Controlled
<b>CFM</b>	13,300	13,600	13,600

Our Thermaire Series Packaged Spray Booths are top producers that provide long-lasting state-of-the-art capabilities at an economical price point.

### THERMAIRE SIDE DOWNDRAFT [NON-INSULATED]

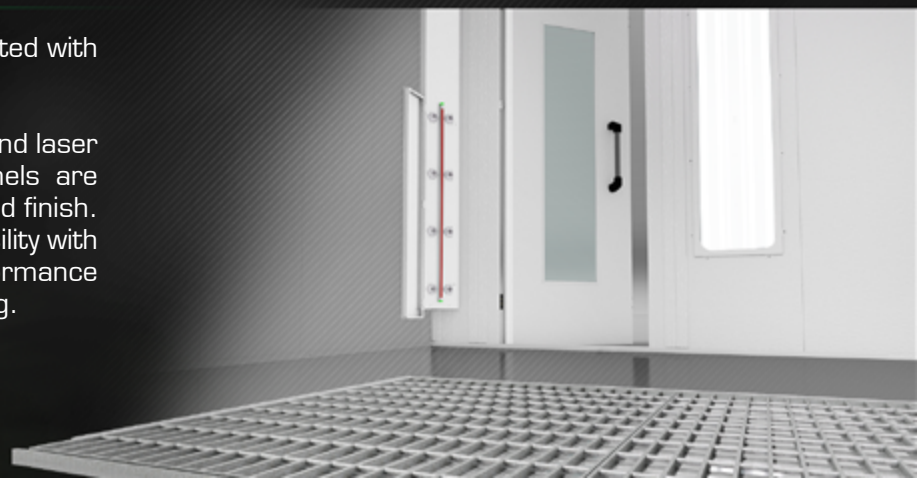
TDDSE	242 24' Side Down	272 27' Side Down
<b>Light Fixtures</b>	(12) Industry-Leading LED Light Fixtures	(12) Industry-Leading LED Light Fixtures
<b>Inside Dimensions</b>	23'10"L x 14'W x 9'H	26'10"L x 14'W x 9'H
<b>Outside Dim. w Mech.</b>	24'2"L x 19'3"W x 11'10"H	27'2"L x 19'1"W x 11'10"H
<b>Entrance Door Opening</b>	9'H x 9'4"W (Tri-Fold)	9'H x 9'4"W (Tri-Fold)
<b>Heater</b>	1M BTU 7.5HP Motor	1M BTU 7.5HP Motor
<b>Exhaust</b>	2x 24" Fan 3 HP VFD Controlled	2x 24" Fan 3 HP VFD Controlled
<b>CFM</b>	13,300	15,000



## SPRAY-TECH/JUNAIR IS ON THE LEADING-EDGE:

Our entire line of single-skin spray booths are created with the highest standards in mind.

CNC-controlled equipment precisely pre-punches and laser cuts every beam for perfect alignment. All panels are punched and squared robotically for superior fit and finish. Better fit ensures rapid booth assembly at your facility with the added assurance of years of unsurpassed performance thanks to the excellence of Spray-Tech engineering.





# POWER SERIES

## SPRAY BOOTHS

THE POWER SERIES INCORPORATES AN AIR MAKE-UP UNIT ABOVE THE BOOTH TO SAVE FLOOR SPACE.



### POWER FULL DOWNDRAFT [INSULATED]

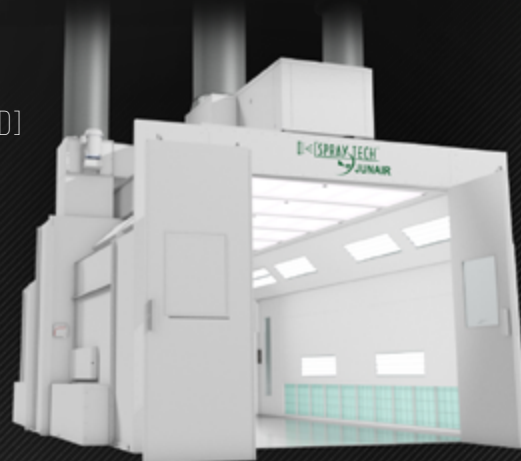
TIDDZ	241 24' Full Down	271 28' Full Down	301 32' Full Down
<b>Light Fixtures</b>	(16) Industry-Leading LED Light Fixtures	(16) Industry-Leading LED Light Fixtures	(18) Industry-Leading LED Light Fixtures
<b>Inside Dimensions</b>	24'L x 14'W x 9'H	27'6"L x 14'W x 9'H	32'L x 14'W x 9'H
<b>Outside Dim. w Mech.</b>	24'5"L x 14'5"W x 13'10"H	27'10"L x 14'4"W x 13'11"H	32'4"L x 14'4"W x 13'11"H
<b>Entrance Door Opening</b>	9'H x 9'4"W (Tri-Fold)	9'H x 9'4"W (Tri-Fold)	9'H x 9'4"W (Tri-Fold)
<b>Exhaust Fan/Motor</b>	32" Fan / 7.5 HP Motor	32" Fan / 7.5 HP Motor	32" Fan / 7.5 HP Motor
<b>Blower Motor</b>	7.5 HP	7.5 HP	7.5 HP

## THE POWER TO CHOOSE

With the Power Series you get the same Peace of Mind, as you would with any Spray-Tech manufactured product, in an economical booth package

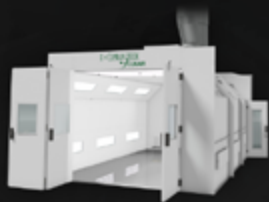
### POWER SIDE DOWNDRAFT [NON-INSULATED]

TDDSE	243 24' Side Down	273 27' Semi Down
<b>Light Fixtures</b>	(12) Industry-Leading LED Light Fixtures	(12) Industry-Leading LED Light Fixtures
<b>Inside Dimensions</b>	24'L x 14'W x 9'H	26'10"L x 14'W x 9'H
<b>Outside Dim. w Mech.</b>	24'2"L x 16'4"W x 15'5"H	27'2"L x 16'9"W x 15'5"H
<b>Entrance Door Opening</b>	9'H x 9'4"W (Tri-Fold)	9'H x 9'4"W (Tri-Fold)
<b>Exhaust Fan/Motor</b>	2x 24" Fan / 3 HP Motor	2x 24" Fan / 3 HP Motor
<b>Blower Motor</b>	7.5 HP	7.5 HP



### POWER SEMI DOWNDRAFT [INSULATED]

TIDDS	241 24' Semi Down	281 28' Semi Down	311 32' Semi Down
<b>Light Fixtures</b>	(14) Industry-Leading LED Light Fixtures	(16) Industry-Leading LED Light Fixtures	(18) Industry-Leading LED Light Fixtures
<b>Inside Dimensions</b>	24'L x 14'W x 9'H	28'6"L x 14'W x 9'H	32'L x 14'W x 9'H
<b>Outside Dim. w Mech.</b>	24'4"L x 14'4"W x 13'11"H	28'10"L x 14'4"W x 13'11"H	32'4"L x 14'4"W x 13'11"H
<b>Entrance Door Opening</b>	9'H x 9'4"W (Tri-Fold)	9'H x 9'4"W (Tri-Fold)	9'H x 9'4"W (Tri-Fold)
<b>Exhaust Fan/Motor</b>	32" Fan / 5 HP Motor	32" Fan / 5 HP Motor	32" Fan / 5 HP Motor
<b>Blower Motor</b>	7.5 HP	7.5 HP	7.5 HP

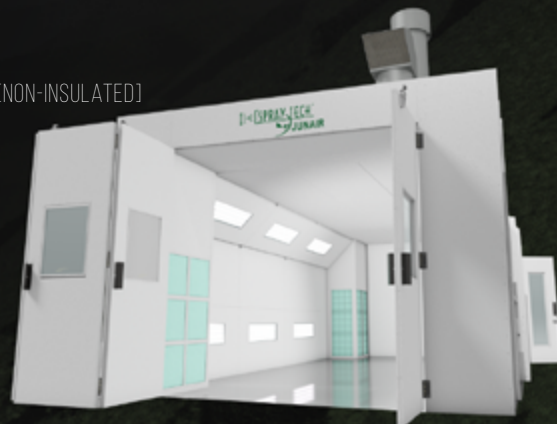


POWER SEMI DOWNDRAFT AVAILABLE IN INSULATED OR NON-INSULATED CONFIGURATIONS

Please ask for more information regarding your specific needs. Dimensional Information for Power Series Models vary. Please request specification data on specific models.

### POWER REVERSE FLOW [NON-INSULATED]

TRFCE	291 29' Reverse
<b>Light Fixtures</b>	(12) Industry-Leading LED Light Fixtures
<b>Inside Dimensions</b>	28'9"L x 14'W x 9'H
<b>Outside Dim. w Mech.</b>	29'1"L x 14'4"W x 14'1"H
<b>Entrance Door Opening</b>	9'H x 9'4"W (Tri-Fold)
<b>Exhaust Fan/Motor</b>	32" Fan / 5 HP Motor
<b>Blower Motor</b>	7.5 HP







### QADS™ SN:

Static neutralization emitters allow for easier color matching on bumpers and composite parts that accumulate static electricity and cause variations in metal particle alignment.

### QADS™ AUTOMATIC:

Used to dramatically decrease dry time of base and clear coat. Interfaces with the bake cycle of existing air make-up to create more turbulence, causing car to bake in a shorter time while reducing overall energy consumption.

### QADS™ ON BAKE:

In addition to QADs™ Automatic, features include elevated temperature control during flash-off and QADs™ are engaged during bake cycle.

### QADS™ CROSSFLOW:

Our exclusive patented above booth air acquisition system provides clean, filtered air from the ceiling, expediting the paint drying process.



# ENERGY MONITOR

(OPTIONAL)

## SPRAY-TECH MAKES IT EASY TO COMPLY WITH THE HAPS 6H RULE WHILE SAVING ENERGY CONSUMPTION COSTS.

All booth functions are monitored and controlled automatically through the use of the ENERGY MONITOR. The energy monitor uses a group of automatic sensors that are built into the Spray-Tech control system and are used to monitor the operations of the booth/oven. If the spray gun is idle for ten minutes, the booth automatically enters "economy" mode. In this mode, 80% of the air is recirculated and 20% fresh air is brought into the booth. In addition to the recirculated air that has already been heated, the fans slow to an idle speed to reduce electric energy consumption. The booth will stay in this mode, continuously clearing itself of recirculated air every ten minutes. When the painter is ready to spray, the spray gun trigger is pulled or the "Spray" button is depressed on the control panel. This entire process of change over from economy mode to spray mode takes less than ten seconds!

## SAVING ENERGY IS AUTOMATIC AND TAKES NO ADDITIONAL EFFORT FROM THE OPERATOR

Included with the energy monitor is an Auto Balance system that monitors the pressure within the booth. It measures the resistance of the airflow across the filters and adjusts the booth pressure accordingly by transmitting the information to the Variable Frequency Drives (VFD's)\* so the painter can be assured that the booth is balanced at all times.

*\*The VFD's are used for optimum air management and efficient motor startup. VFD's eliminate energy depleting and maintenance prone control dampers.*







## CLOSED TOP OPEN FRONT SPRAY BOOTH

The Spray-Tech Thermaire CTOF will handle the vehicle preparation process, including the final application. It is available in several sizes and airflow configurations to meet your needs.

## PAINT MIXING ROOMS

Spray-Tech mixing rooms are designed to provide the safest means of paint storage and preparation in the collision repair industry. A filtered intake vent provides clean contaminant-free air to the storage and mixing environment while an exhaust fan removes any airborne VOC's. High output light fixtures provide uniform, color-corrected, illumination to the mix room, ensuring both safety and productivity.



# OUR SMART LINE OF PRODUCTS

Designed to save you time and energy costs and will help your shop meet the approaching NESHAP Rule 6H Deadline.



## SMART PREP

Smart prep is an outstanding compact booth for refinishing miscellaneous parts/products or vehicle sub assemblies. Since the Smart Prep comes standard with a full roof, curtains or walls and is ventilated so air is drawn into the booth, this product meets NESHAP 6H as well as other local code requirements. Ask us about attaching a mixing room!

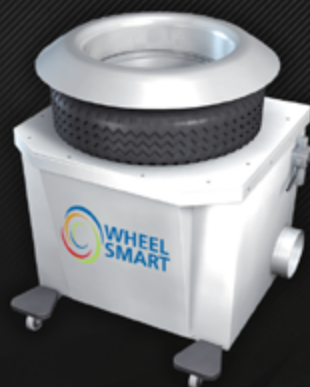
Attached mixing room optional



## SMART AIR

Smart Air is a unique way to reduce operating costs by reserving your spray booth for larger jobs. Smart Air features a hood and masking system that is attached to an extraction tower, which captures overspray and allows for the flexibility of spot repairs anywhere in your shop thanks to our convenient extraction tower system.

Note: Smart Wheel/Air come with tower extraction system not pictured here.



## WHEEL SMART

Wheel Smart is an innovative wheel refinishing method that not only enables you to provide a profitable "in-house" refinishing service, it also allows for a wheel to be refinished without having to tie up your spray booth. Wheel Smart is attached to an extraction tower that captures overspray and allows for a wheel to be refinished in virtually any location with the tire still on the wheel.





## QUALITY – RELIABILITY & INNOVATION

For more than two decades Spray-Tech/Junair has manufactured superior finishing equipment, built from quality components to provide years of worry-free operation. Our innovative designs deliver energy and application efficiencies with consistent results.

- Spray-Tech/Junair employs a team of seasoned designers proficient with the latest software and lean manufacturing principles.
- Combined, our engineering staff has well over 100 years of design experience, providing us the ability to maintain continuity in design and allowing us to accurately visualize and test our equipment before it is physically constructed.

Ask our expert engineers to find a practical solution for your process today.



### PRODUCING ONLY THE HIGHEST QUALITY FINISHING EQUIPMENT SINCE 1994

Est. 1994 and based in Rialto, CA, Spray-Tech/Junair is an American brand whose products have achieved international reach & relevance.

Spray-Tech/Junair produces some of the world's most efficient industrial finishing products that deliver exceptional results while leading the industry in eco-friendly design. Spray-Tech/Junair is dedicated to doing business without damaging the environment; that's why we utilize solar-panel technology to run our manufacturing facility.

### REQUEST A QUOTE :



P. (800) 535 – 8196



F. (909) 419 – 7020



[SALES@SPRAYTECH.COM](mailto:SALES@SPRAYTECH.COM)

Want to see more? Follow us on:



LEARN MORE AT [SPRAYTECH.COM](http://SPRAYTECH.COM)

