



Xinling Industrial Co., Ltd.

Top quality by every details

<http://www.xinlinghk.com>



Company Profile

1

**Company
Overview**

2

**Our
Capacity**

3

**Projects
Show**



Company Overview



4 locations---Shenzhen, Chang'an , Wuhan, Germany and Canada



40 mins by car from Shenzhen airport to Xinling factory



70 employees
including over 50 skilled worker in manufacturing department





Company Overview

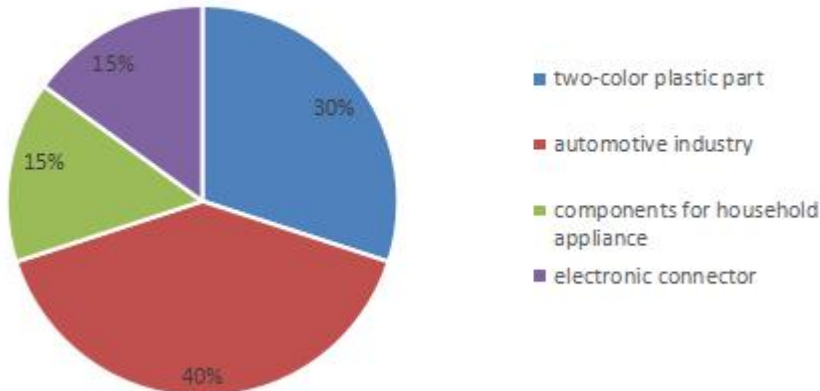


US\$ 4.5 millions turnover in 2020, US\$ 5 millions forecast turnover in 2021

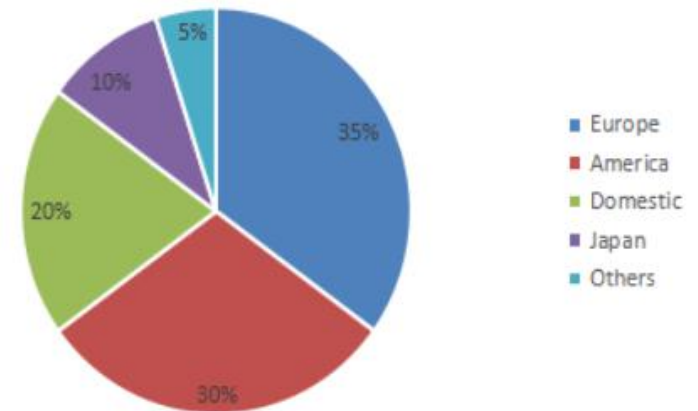


80% Mould
20% Producing

Industry



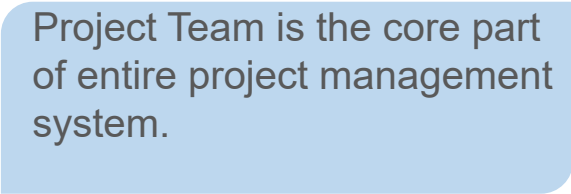
Market





Company Overview---Customers







Company Capacity



In sizes up to
1500 mm*1200 mm and 15 Tons of weight

Mold precision:0.01 mm

Capability:30 molds/per month
300 sets of molds per year

Main tooling: Plastic injection mold
Two Color mold
Insert mold
Over-Molding mold



Company Capacity



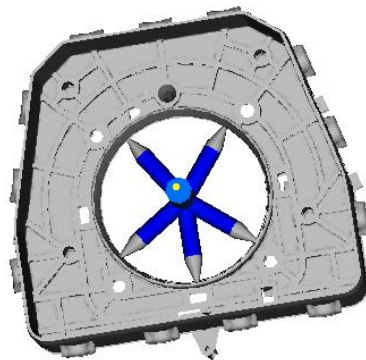
7 mold designer & 3 programming engineer

Software:

UG NX8.5, AutoCAD 2008, Mold Flow Advisor.

Mould Flow Analysis

- Gate Suitability
- Filling
- Melting line
- Air traps
- Deflection



MoldFlow
MOLDFLOW PLASTICS INSIGHT

Scale [100 mm]

Pressure
Time = 0.0967[s]
[MPa]



172
-124
-74





2 Project Managers

Company Capacity



Fully support you to finish your project from kick off to shipping

Including:

DFM report

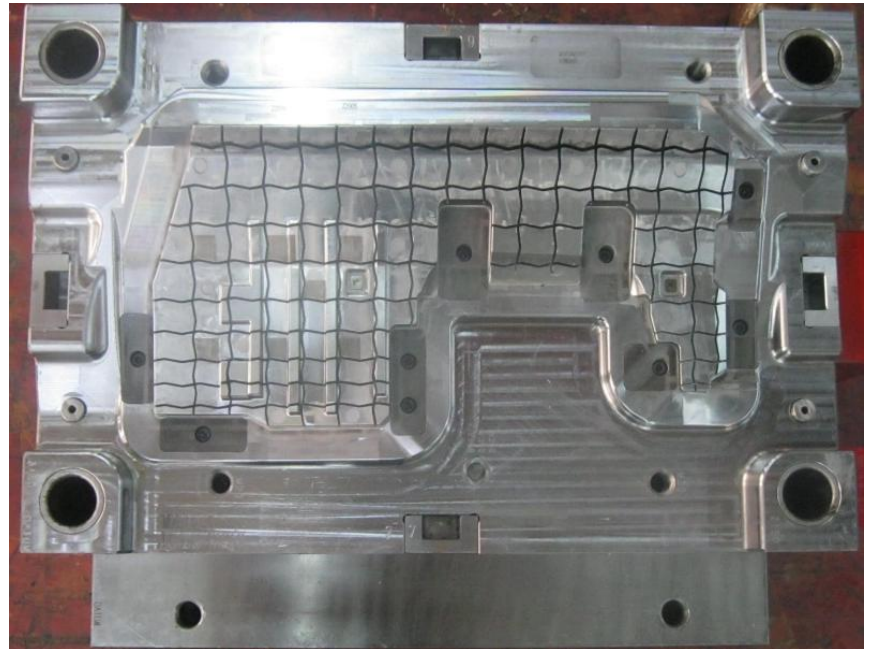
Mold flow analysis

Weekly report with process pictures

T1 trial report

Molding process setup report

Mold checking list





Company Capacity

Offering:

Steel certification

Steel hardness report

Inserts measurement report

Samples measurement report



3 Coordinates Measuring



2D PROJECTOR

Quality Control



Company Capacity

Mould Packing&Shipment



Items shipped along with Mould :

- Mould 2D & 3D in CD
- Steel certificates
- Latest Injection process parameters
- Latest part inspection reports
- Fine electrodes with CAD data in CD



Main Supplier

Steel



Hot runner



Standard parts



Hydro-cylinder



Plastic Material supplier





Project Show--Auto parts





Project Show--Auto tank





Project Show--Auto lighting





- Project Show--Over molding & 2k parts





- Project Show--Two Color parts



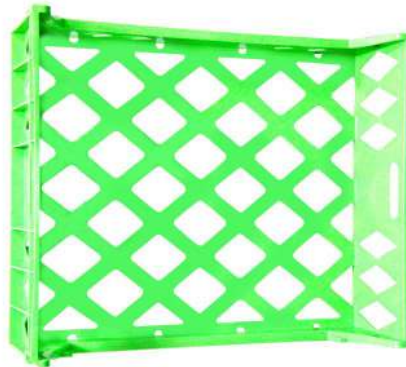
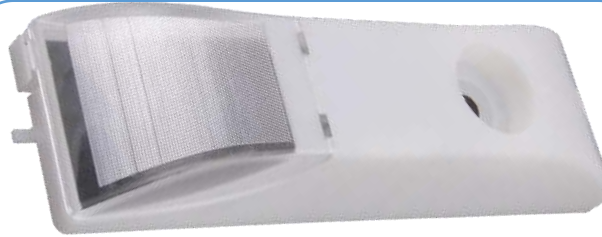


Project Show--Auto connector



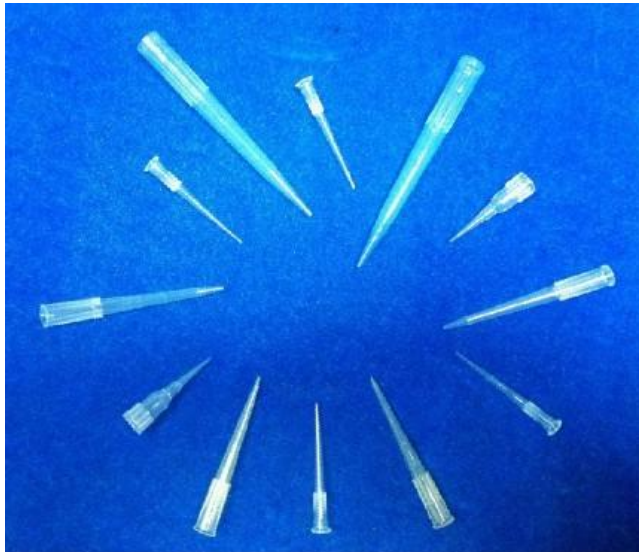
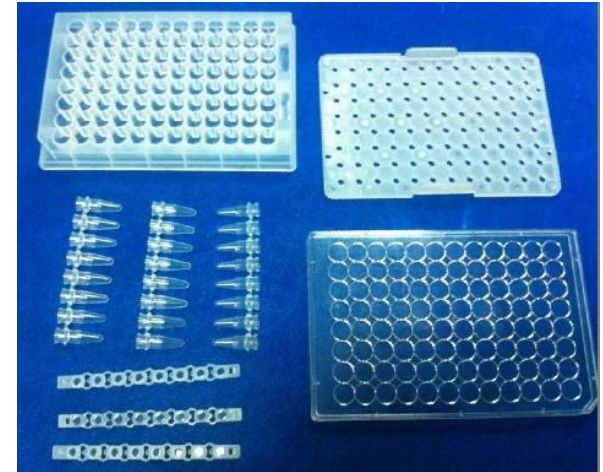


Project Show--Household appliances





• Project Show--medical part • • •





Project Show

Ending customer: TE (India)

Part material: PPE+PA+GF10

Part size: 206X303X91 mm

Part weight: 546g

Cavity: 1

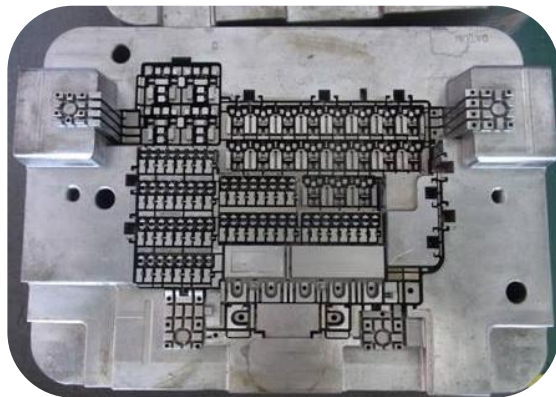
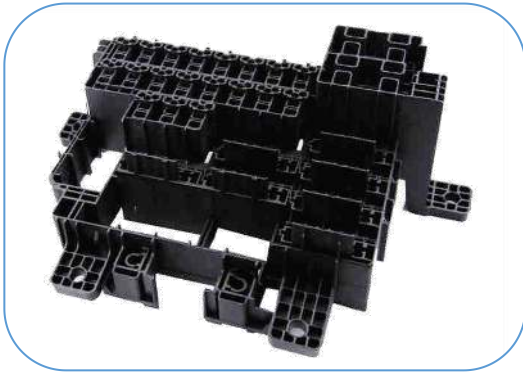
Cavity & Core: 1.2738H

Gate: Cold runner with 22 gates

Mould dimension: L400*W500*H500 mm

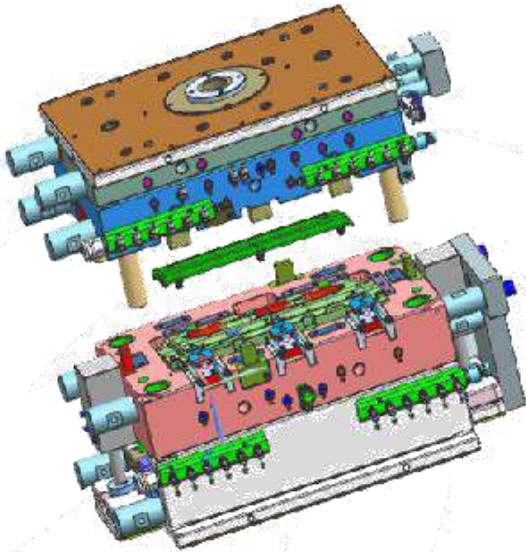
Mould Insert Quantity: 876pcs

Blade Ejector Quantity: 635pcs





Project Show



Part Material: PP

Part demension:558*208*60 mm

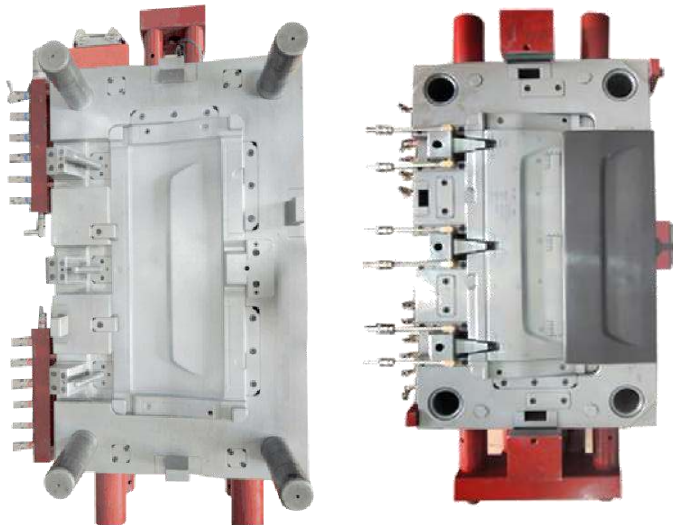
Runner method:cold runner

Mold type: 2 plate mold

Cavity&Core Steel: 1.2711

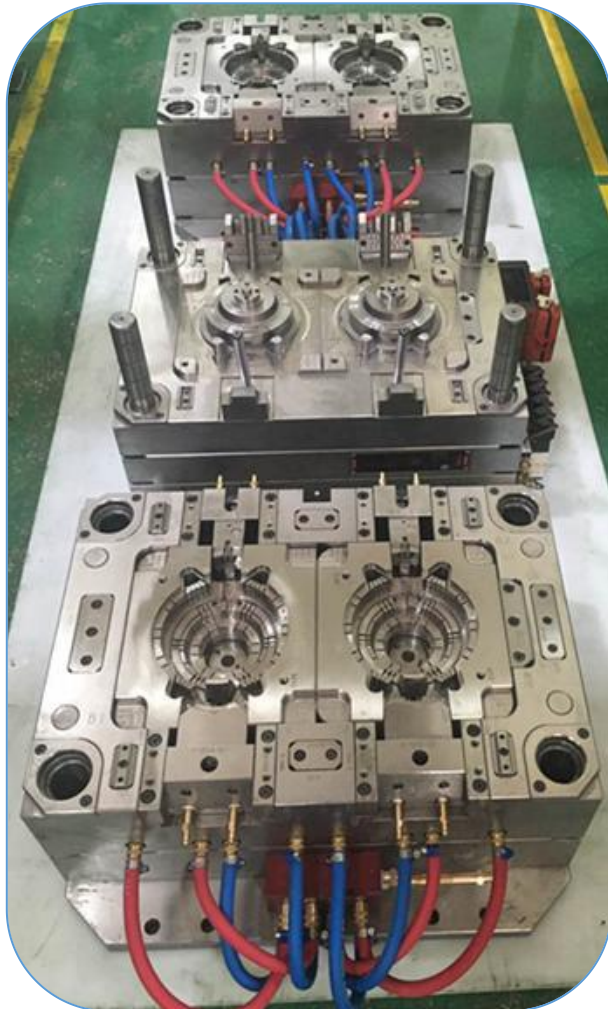
Mold Dimension: L1230*W650*H663 mm

Mold weight:2585 KG





Project Show



Final Customer: Harman(Hungary)

Project No.: SZR1197-1198

Parts name: Smart basket

Part Material: PC GF10

Cavity&Core Steel: 1.2344

Mold Dimension: L700*W450*H550 mm

Runer&gate: YUDO Hot runner, needle valve

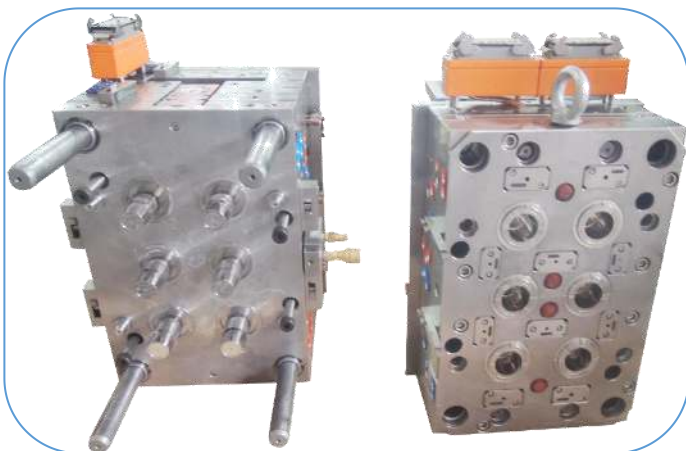
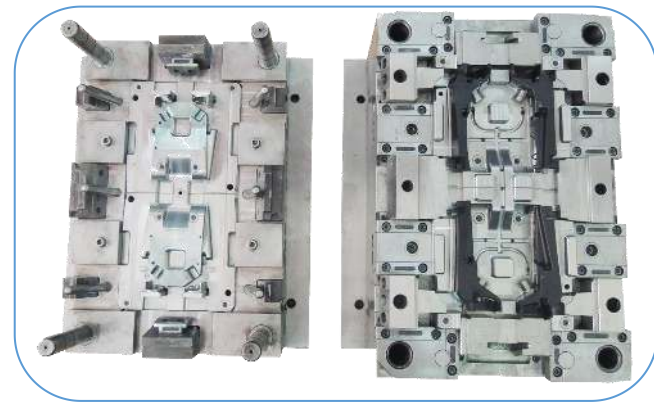
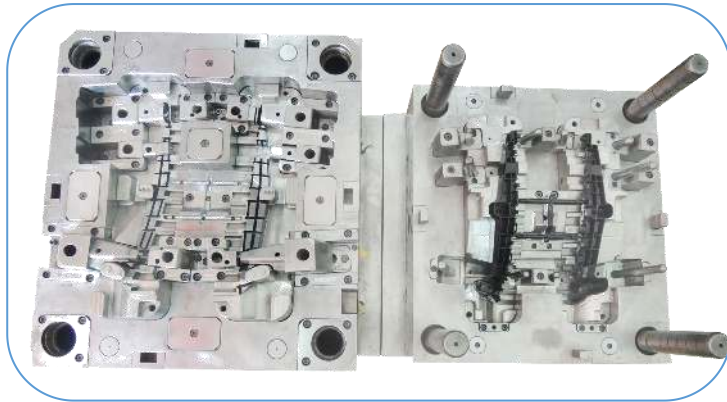
Notes:

Vertical machine.1 cavity with 2 core,overmolding with metal components





Project Show





Molding ability



20+ Haitian molding machines.

90T-2800T



Injection machine list

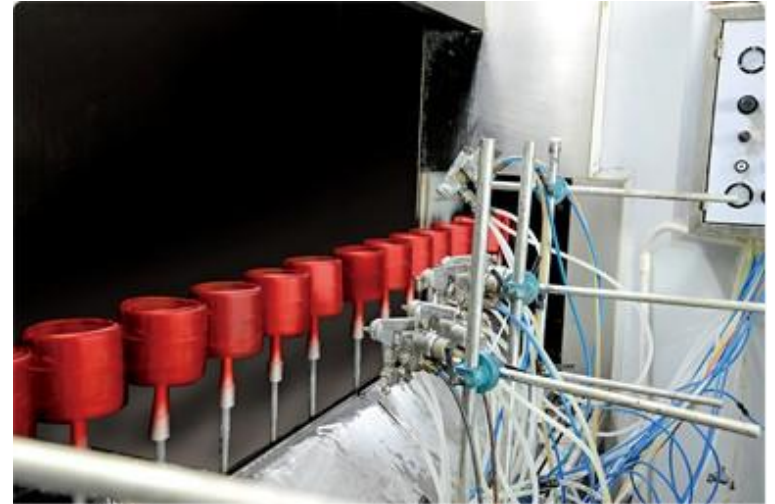
Brand	Type	Machine Qty	Platen size	Tiebar spcaing	Min mold height	Max mold height	Platen stroke	Injection volume
HT	SA90T	1	545*545	360*360	150	380	700	121
HT	SA120T	1	620*620	410*410	150	450	700	173
HT	SA160T	1	705*705	470*470	180	520	950	253
HT	SA200T	2	790*790	510*510	200	530	1000	334
HT	SA250T	1	860*860	580*550	220	580	1040	472
HT	SA320T	2	1000*1000	680*680	250	680	1320	792
HT	SA380T	2	1030*1030	730*730	280	730	1430	1068
HT	SA470T	2	1210*1180	780*780	320	780	1550	1296
HT	SA600T	1	1320*1300	880*880	380	880	1780	2497
HT	SA700T	1	1405*1386	960*940	400	940	2000	2058
HT	SA800T	1	1420*1440	1160*1160	400	1080	2050	3145
HT	SA1000T	2	1702*1650	1250*1250	500	1160	2380	4006
HT	SA1200T	1	1870*1820	1350*1350	550	1250	2550	4006
HT	SA1300T	1	1916*1896	1550*1430	600	1300	2700	5227
HT	SA1600T	1	1960*1960	1650*1500	700	1600	3100	8349
HT	SA2000T	1	2300*2390	1900*1750	720	1600	3100	10115
HT	SA2800T	1	2720*2520	1900*1900	830	1900	3900	17557
Baina	L260-2C 2K	1	1030*1030	570*570	295	705	1300	A136 B61



Second operation



Packaging



Painting



Silk-screen



Quality Assurance

All activities performed at Xinling each division are ISO 9001:2015 certified. Xinling quality management system is designed to assure superior quality and service.

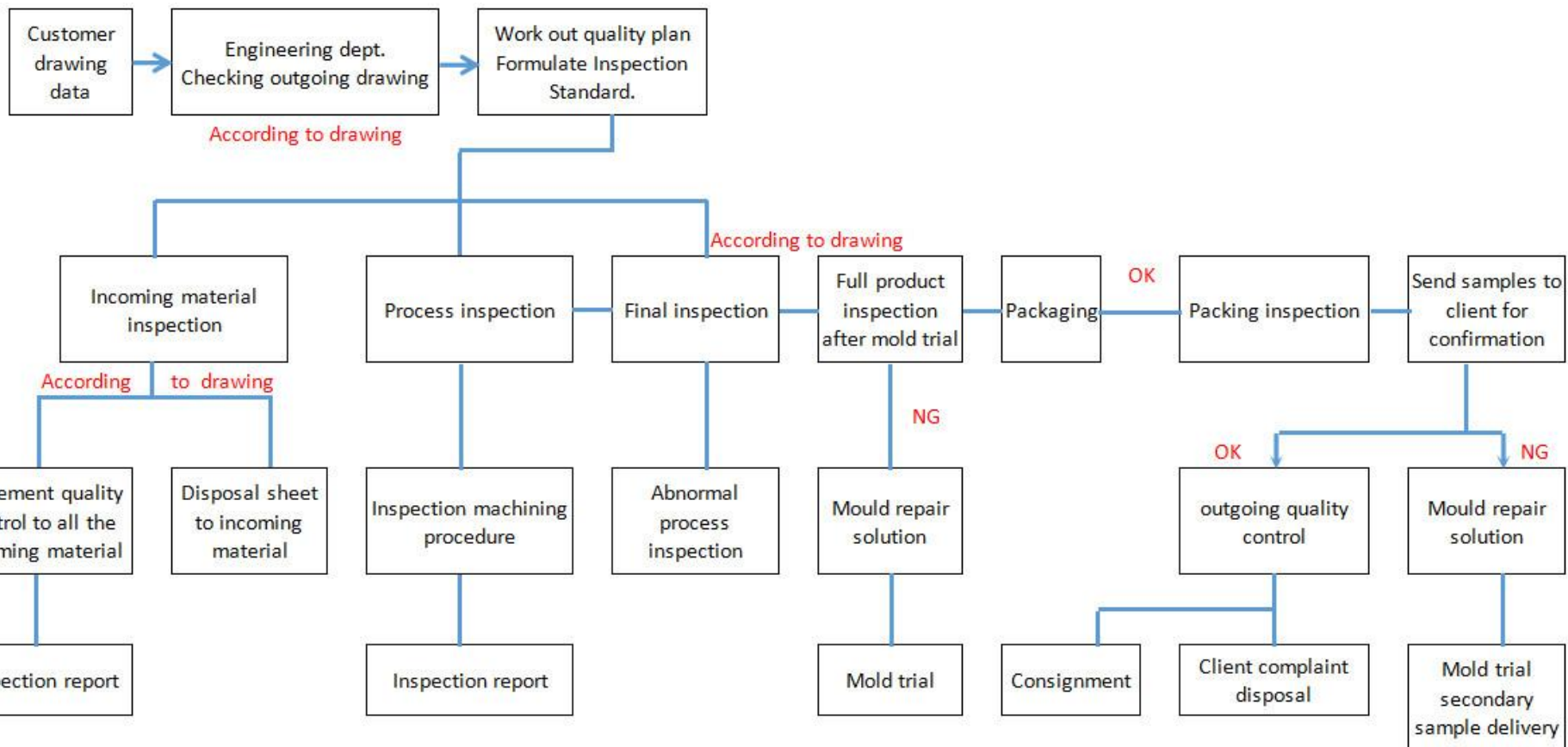
This system is specifically developed to assure attention to detail, consistent documentation and unsurpassed overall product quality and reliability.

These systems include:

1. Project review: it include the part design analysis,mold structure design and machining verification,mandatory documented quality planning for every project.
2. To check the supplier qualification.
3. To check the resource of the raw material.
4. To check every step during the mold making.
5. Sample inspection.
6. Checking before shipping.
7. Internal auditing to assure our system remains in compliance.



Quality Assurance

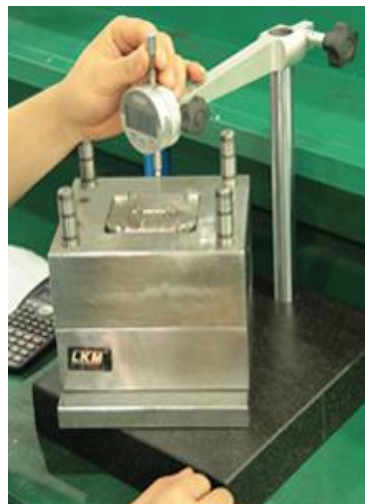
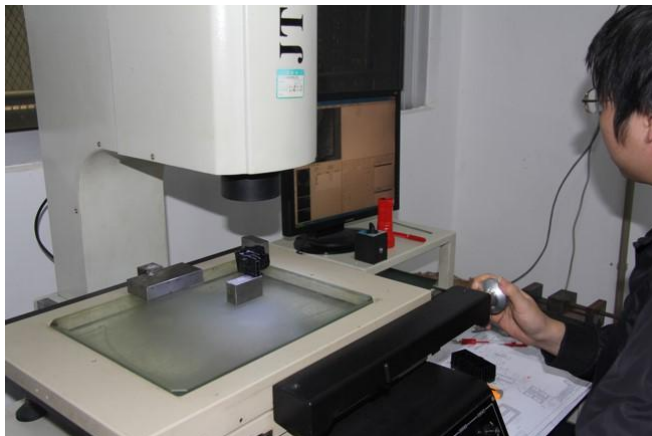




Quality Assurance



ISO 9001:2015





THANK YOU

- Contact: Jovy Liu
- Email: joy@xinlinghk.com
- Tel: 86-13427437753 (wechat&whatsapp)
- Website: <http://www.xinlinghk.com>