

Ashimori Mexico Company Profile

2.09.2022

Corporate Data

- Found in 1878 in Osaka Japan
- Originate with textile business
- Capital 8,388 Million Yen (76 Million USD)
- Consolidated employees 2,800

Ashimori Core Technology

**Assembling,
Sewing**

**Winding,
Fastening**

**Resin (coating)
process**

Inflating

Ashimori Business Field

ASHIMORI
POWERED BY
INNOVATION

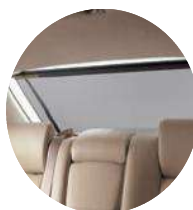
Consolidated Sales 51,248 MILLION YEN (480 MILLION USD)

***2021/3**

Automotive Safety System Division

**JAPAN, CHINA, KOREA,
THAILAND, INDIA, MEXICO**

70%



Seat Belts

Airbags

CRS Products, Etc.

Interior Products

Cargo Nets/ Sun shades, Etc.

Functional Products Division

JAPAN

30%



Fire Hoses, Hydrant Hoses

Synthetic Fiber Ropes

Cargo-transportation Systems, Etc.

Ashimori Mexico General Information

ASHIMORI
POWERED BY
INNOVATION

Company's full name	Ashimori Industria de Mexico S.A. de C.V.
Address	Circuito San Roque Norte No. 345,
	Parque Industrial Santa Fe Ampliacion,
	C.P. 36275 Silao, Guanajuato, Mexico
Shareholder	Ashimori Industry Co., Ltd. 100%
Employees	430 (Assignment from Ashimori Japan 4)
Function	Production and Evaluation after production for Automotive Safety Product

Ashimori Mexico Footprint

ASHIMORI
POWERED BY
INNOVATION

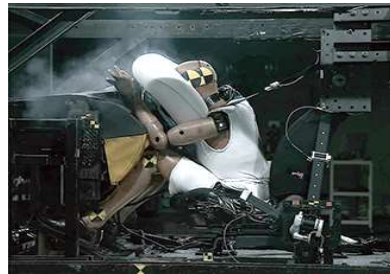
Year	New Customer	Industry	Certification	Remarks
2012				Operation begin
2013	Kasai North America, Kasai Mexico	Automotive		
2014	Mazda Mexico, Subaru Indiana	Automotive	ISO9001	
2015			ISO/TS16949	
2016	Honda North America	Automotive		
2017				
2018	Toyota North America	Automotive	IATF16949, CCC	2 nd plant construction
2019	Daimler Mexico	Automotive	ISO14001	
2020			C-TPAT	
2021	Mazda North America	Automotive		

OEM Program –in production

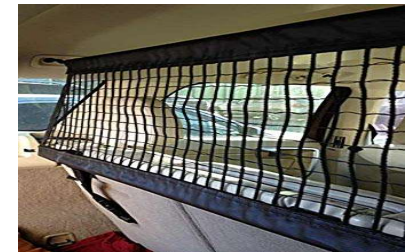
OEM	Program	Safety/ Interior	Application	Delivered Place
HONDA	CR-V	Interior	Tonneau Cover	USA/CANADA/ASIA
SUBARU	OUTBACK	Interior	Tonneau Cover	USA
SUBARU	IMPREZA	Interior	Tonneau Cover	USA
SUBARU	ASCENT	Interior	Tonneau Cover	USA
MAZDA	MAZDA CX50	Interior	Tonneau Cover	USA
TOYOTA	LEXUS ES	Interior	Electronic Rear Shade	USA
DAIMLER	CLASS A/B/C/GLA	Interior	Partition Net	MEXICO
NISSAN	INFINITI QX50	Interior	Manual Rear Window Shade	MEXICO
NISSAN	INFINITI QX60	Interior	Manual Rear Window Shade	MEXICO
MAZDA	MAZDA3	Safety	Seat Belt	MEXICO
MAZDA	MAZDA2	Safety	Seat Belt and Air Bag	MEXICO
MAZDA	MAZDA CX30	Safety	Seat Belt and Air Bag	MEXICO
MAZDA	MAZDA CX50	Safety	Seat Belt	USA

Production Line-up in Mexico

-Safety: Seat Belt, Air Bag, Spare Tire Band



-Interior: Tonneau Cover, Electronic / Manual Door Shade, Partition Net



Customer Recognition



Subaru Indiana

2015: Quality and Delivery award

2016: Excellence in partnership award

Mazda Mexico

2016: Supplier of excellence award

2017: Quality award

Honda North America

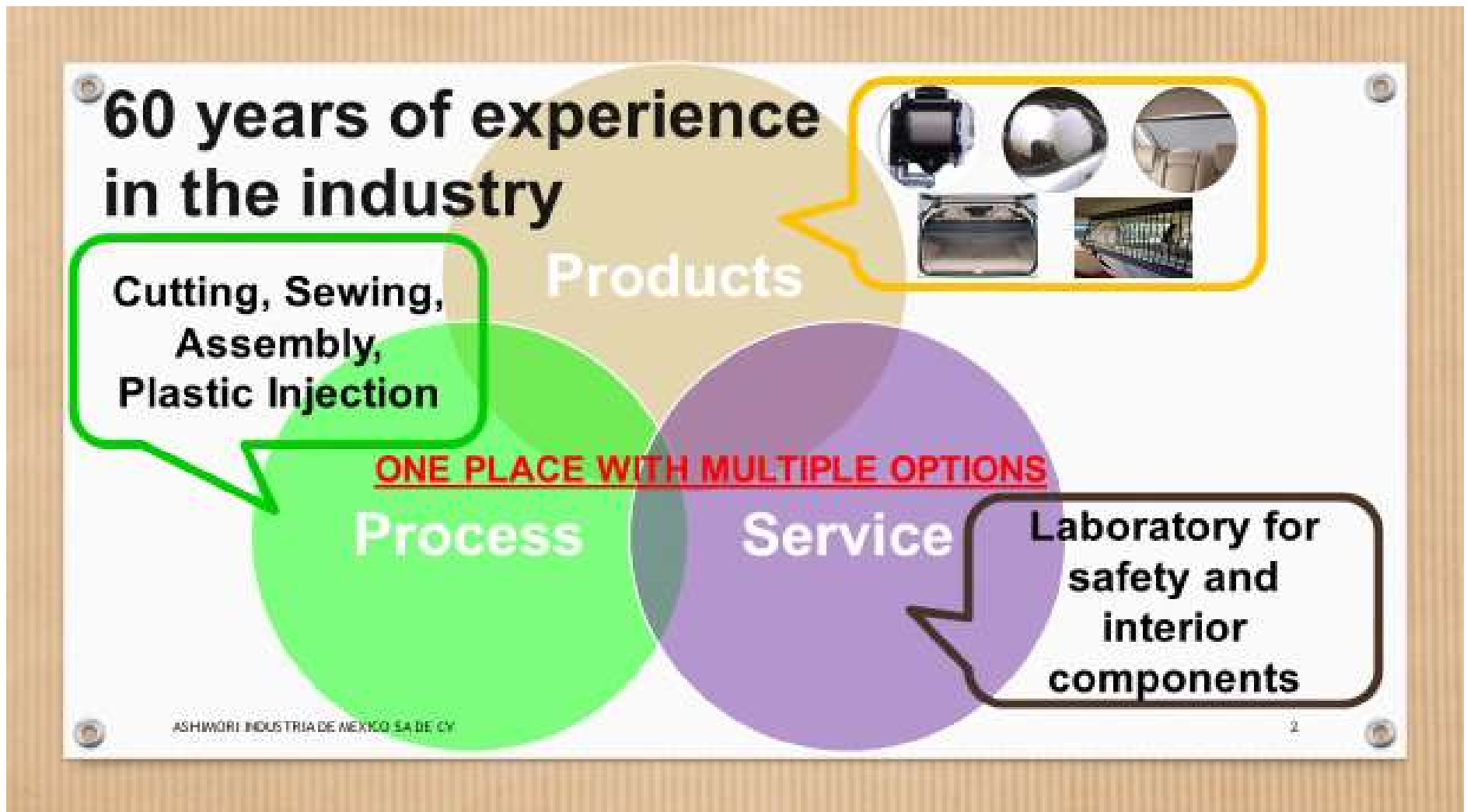
2017: Quality and Delivery award

Kasai Mexico

2018: Quality award

Plant In-House Capacity

ASHIMORI
POWERED BY
INNOVATION



Ashimori Mexico Plant Layout

ASHIMORI
POWERED BY
INNOVATION

Overall Land 43,000 m²

2nd plant

- ① 1,2F FG warehouse
- ② 2F Canteen
- ③ 3F Safety Assembly
- ④ 4F Interior Assembly

Raw material Warehouse

1st plant

- ① cutting
- ② Injection
- ③ Laboratory

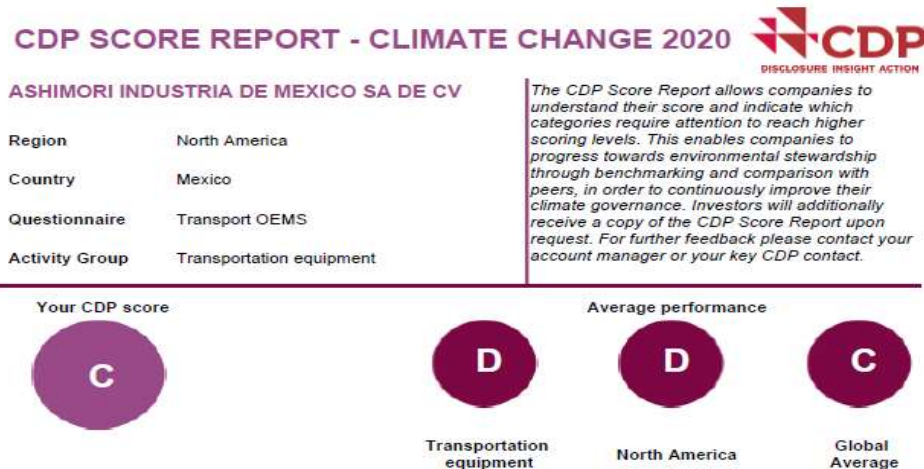


Ashimori Mexico Environmental Initiative

ASHIMORI
POWERED BY
INNOVATION



**50% of Energy consumption
from solar panel**



Participation on CDP* since 2019
***Carbon Disclosure Project**