



SERVICIOS GENERALES DE MANUFACTURA & DOCAR CORP

La Solución a sus Necesidades





MISSION.

Offer the best services to our customers, exceeding their expectations through innovative solutions and applying engineering, guaranteeing total quality in the needs that arise in a timely manner.

VISION.

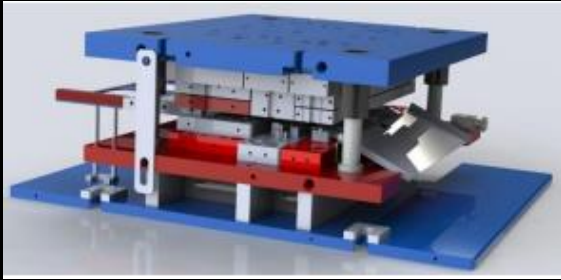
To be a leading service company in the application of engineering and solutions according to the needs of the market through the adaptation of technologies.

To be the number one supplier to the industry as well as the largest engineering developer in the country

VALUES.

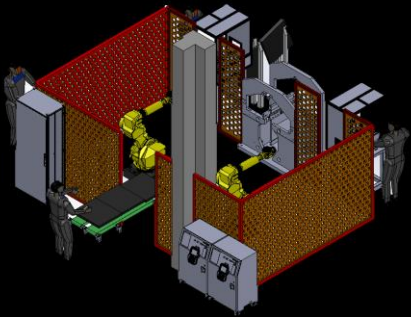
We are a company 100% responsible in providing first level attention to our customers, dedicated to offering quality excellence in our projects, professionals in the elaboration of each work and focused on continuous innovation and delivering our products and services on time, with quality, complying with specifications and promoting new technologies and improvements giving support 24 x 7.

SERVICES



Design and Manufacture of Tooling and Injection Molds (Aguascalientes, Ags.).

- Precision machining
- Major repair
- Manufacture of spare parts
- Mass production of machined parts
- Reverse engineering
- Stamping maquila up to 300 tons



Engineering and Design Automation (Aguascalientes, Ags.).

- Manufacture and integration of equipment for manufacturing, inspection and assembly
- Turnkey projects
- Welding
- Design of drawings and mechanisms
- Electronic design
- Reverse engineering



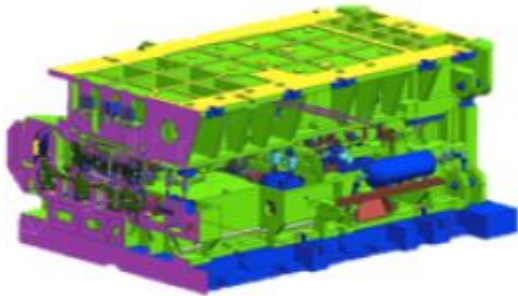
Aluminum Injection - Die Casting (García NL)

- Aluminium / Zamak
- Surface termination
- Machining
- Assemblies and tests

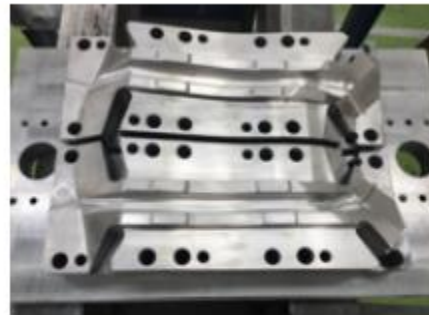
Design and Manufacture of Stamping Tooling and Injection Molds

Company specialized in the design and manufacture of tooling with Japanese engineering.

We provide high level engineering and agility in the problem solving for high complexity projects



DESIGN

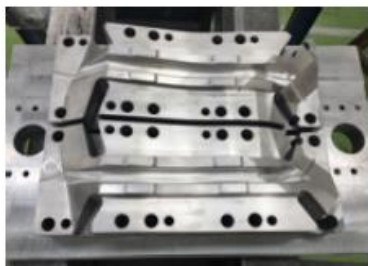


DIE MANUFACTURING



REVERSE ENGINEERING

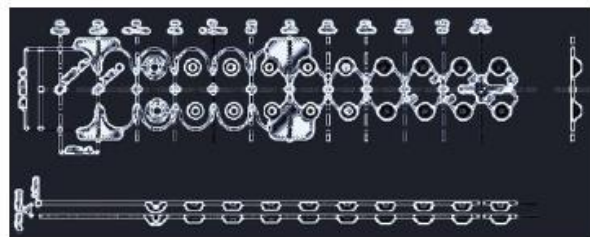
Manufacturing, maintenance and set-up of tooling, as well as soft tools and checking fixtures.



MANUFACTURING AND MAINTENANCE



PRECISION MACHINING WITH SPECIALIZED EQUIPMENT



FOCUS ON PROCESS OPTIMIZATION

SERVICES

FAST PROTOTYPES

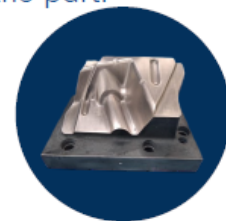
Quick simple soft tool design and manufacturing for low volume or first prototype parts.

REVERSE ENGINEERING

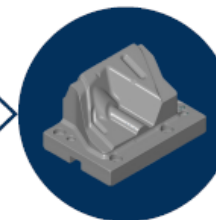
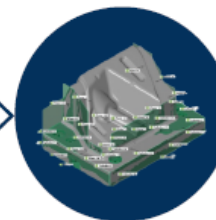


Parts with cracks, welding, surface wear or damage to their cutting on edges.

Solid 3D data after repairing surfaces according to the function of the part.

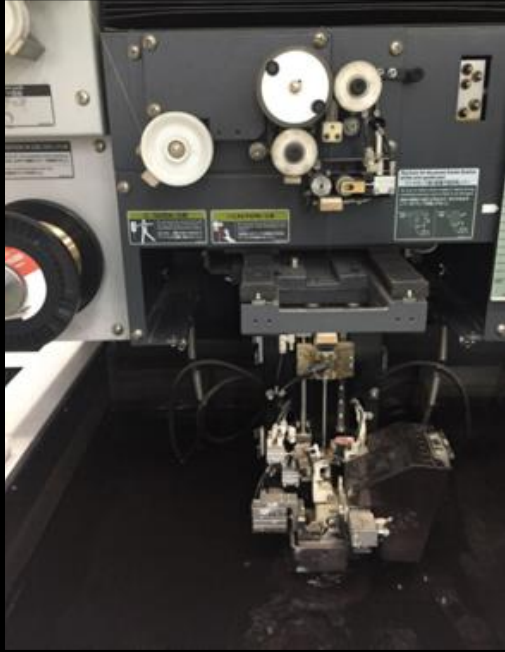


Optical scanner equipment for reverse engineering and 3D inspection with high accuracy, $\pm 0.002\text{mm}$ in a single 3D scan, and high resolution with working distance of 440mm.

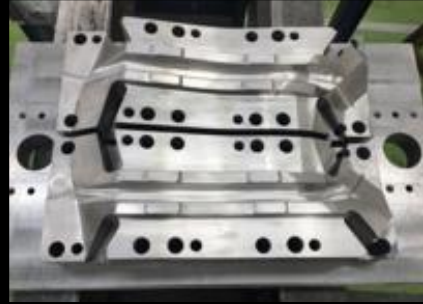


EQUIPMENT

- HIGH ACCURACY EQUIPMENT -



EDM wire cutting machinery with accuracy of $\pm 0.001\text{mm}$, from 2D or 3D geometry. It can cut materials up to 200mm in height



3-axis CNC machinery for surfaces with high quality finishes. Cad cam programming with process optimization software.



CNC lathe with 2 axes for parts such as guide pins, bushings, pilots and punches, from cam programming in 2D and 3D.



Optical scanner equipment for reverse engineering and 3D inspection with high accuracy, $\pm 0.002\text{mm}$ in a single 3D scan, and high resolution with working distance of 440mm.

EQUIPMENT

- HIGH ACCURACY EQUIPMENT -



EQUIPMENT

HYDRAULIC PRESS FOR TRY OUTS
BRAND · SAVAGE

Specifications (All inches)

Tonnage Capacity

100 tons

Stroke

74" (1879.6mm)

Daylight

124" (3149.6mm)

Shut height

50" (1270mm)

Press speeds

Advance-120ipm (3048mm p/m)
Press- 0 to 20" ipm (0 to 508mm p/m)
Retract - 190ipm (4286mm p/m)

Platen size

120" (3048mm) left to right, between post-
84" (2133.6mm) front o back overall

EQUIPMENT

- HIGH ACCURACY EQUIPMENT -

Machine Name	Brand	Model	Quantity	Stroke				Spindle speed (r/min)
				Xmm	Ymm	Zmm	Wmm	
Wire Cut Electric Discharge Machine	Mitsubishi Baoji	MV1200-S DK7732ZF	1 1	400 320	300 400	220 200	- -	- -
Vertical Machine Center	Baoji Microcut Microcut	VMC850B	2	800	500	550	-	8000
		V-760	1	1510	740	680	-	8000
		VMC400	5	400	350	450	-	8000
Vertical Machine Center Bridge Type	SNK	VFD-4N	1	4242	2895	610	1016	6000
NC Lathe	Baoji	SK50P	1	275	-	900	-	1620
Conventional Lathe	Baoji	GH-1340A	1	160	-	890	-	2000
Milling machine	Tos Kurim Baoji	FG320	1	1030	320	430	-	1400
		X6323A	2	838	305	400	-	4200

PRESS STAMPING AND PRODUCT MANUFACTURING



DIE STAMPING FROM 150 TO 300 TONS



DIE MAINTENANCE



3D SCANNING MEASUREMENT



OUR DESIGNERS HAVE AT LEAST 6 YEARS OF
WORKING EXPERIENCE IN EACH AREA



Design Engineers
7 members



Project Development Engineer
1 member



Administrative Staff
3 members



Logistics
1 member



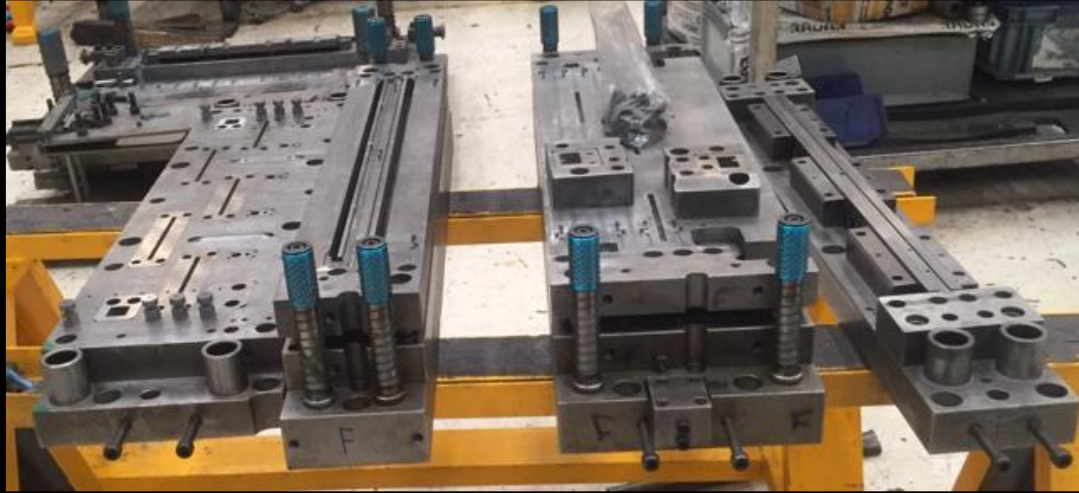
Machine Operators
8 members

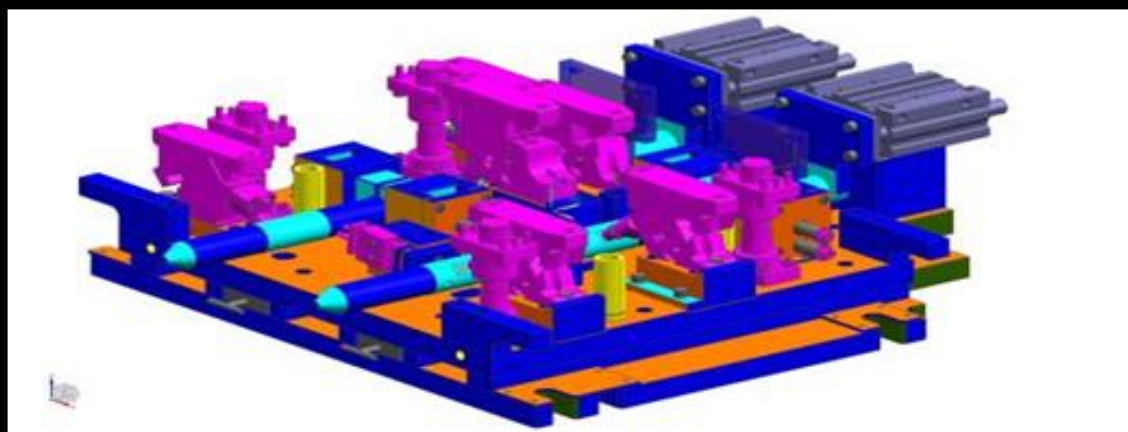
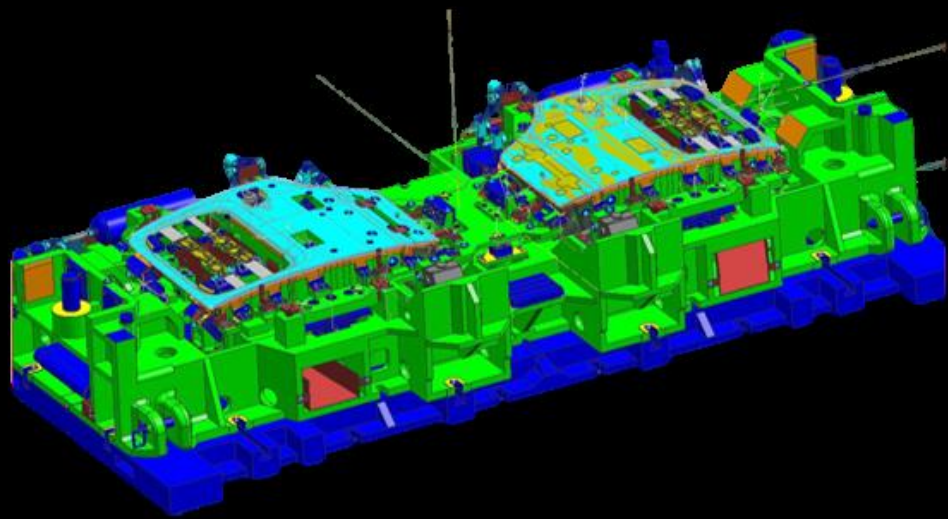


Adjustment and Assembly Technicians
6 members



Quality Control
2 members





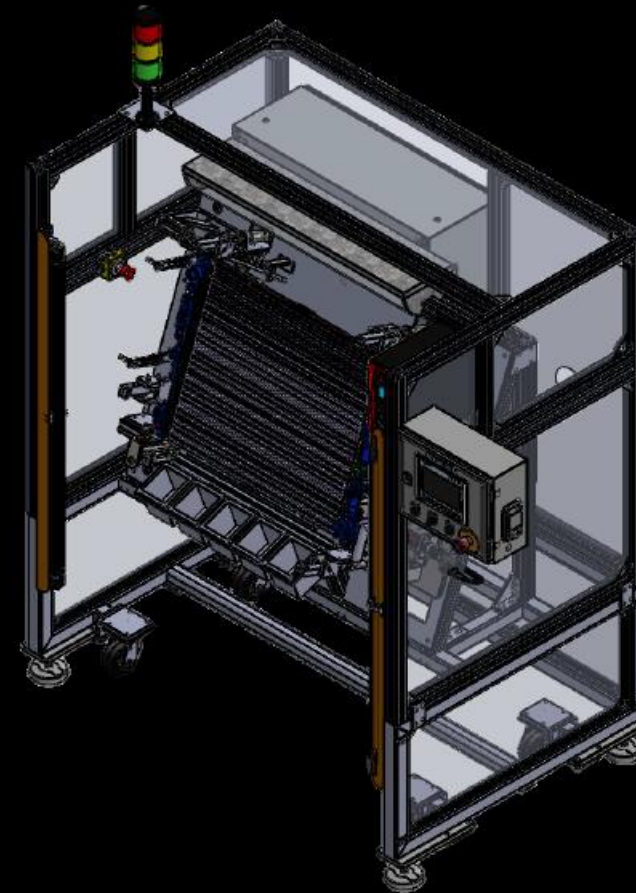
OUR CLIENTS



ENGINEERING AND DESIGN AUTOMATION

Products and services

- Automation and Control
- Design and manufacture of special equipment
- Installation and electromechanical assemblies
- Reconstruction and upgrading of equipment
- Staffing –Project Engineers, Designers, Programmers, Electrical and Mechanical staff
- Safety –Risk Assessment, Orientation and consulting, equipment validation
- Safety introductory and advanced training
- DC3 training



Skills

System design and 3D simulation.

- Design, programming and simulation of robotic cells & CNC machines.
- Design and construction of tools and fixtures.
- Programming software and electrical controls.
- Reverse engineering.
- Special Machining workshop.
- Equipment for installations and assembly.



Before



After



Rockwell
Automation
 **Allen-Bradley**

DENSO
robotics


3D
SOLIDWORKS

PARTNER
SYSTEM
INTEGRATOR **PSI**
COGNEX

Certifications



Mitsubishi Electric
System Integrator


UNIVERSAL ROBOTS

Ovens



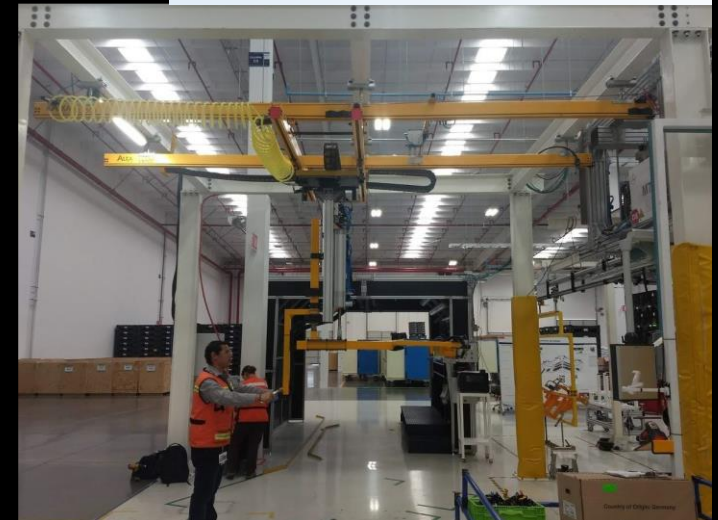
Vision System



Punching Machine



Manipulator lift assist



Robot adhesive application System



Robotic Cells





Customers



Die Casting

We are a company dedicated to the manufacture of Aluminum die cast parts, complemented by secondary operations required by our customers: trimming debarring, surfaces finishing, Machining processes as drilling and tapping; assembly and tests.



MARKETS:

- INDUSTRIAL
- ELECTRICAL
- STRUCTURAL
- DOMESTIC AND FARM



QUALITY ASSURANCE

- Certificated Alloys
- Improvement quality control based on ISO 9001-2015
- In process - 100% visual inspection system
- Destructive test to internal probe (in sampling)
- Measuring of finished parts (Gauges, micrometer, Vernier)



Die casting machines

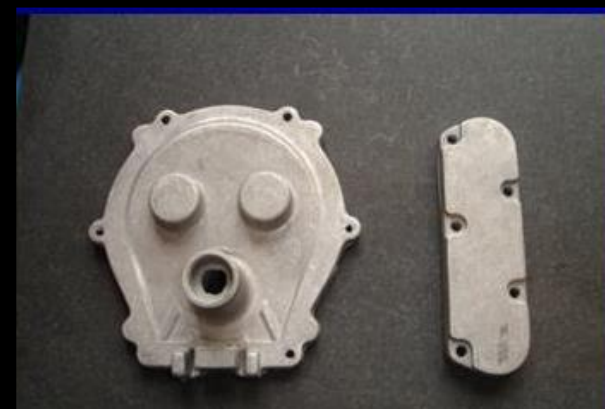
Maquina	tonelaje	Marca	distancia entre barras eje X	dist entre barras y	Altura mínima	altura máxima	posición de inyección
120-1	120 ton	italpresse	360 mm	360 mm	140 mm	420 mm	central e inferior (80 mm bajo centro)
250-1	250 ton	Bulher	500mm	550mm	200 mm	700 mm	central e inferior 150 mm debajo centro)
500-1	500 ton	Bulher	620 mm	680 mm	250 mm	700 mm	central e inferior 200 mm bajo centro)
750-1	750 ton	Kux	715 mm	715 mm	500 mm	900 mm	Inferior 200 bajo centro

Machinned machines

Maquina	Marca	dimensiones X-Y-Z
CNC-1 CENTRO DE MAQUINADO	ACROLOC	50"-18"-9"
F-1 FRESADORA	BRIDGEPORT	775-400-406mm
F-2 FRESADORA	ALLIANT	775-400-406mm
TORNO	DJC	500mm de volteo por 2000mm de longitud



CUSTOMERS:





GRACIAS!!!

Juan Carlos Estrada R.
81 8210 5423
jcestradar@outlook.com