



Greenleaf®

Saegertown, PA 16433 | 814-763-2915 | www.greenleafcorporation.com | www.greenleafglobalsupport.com

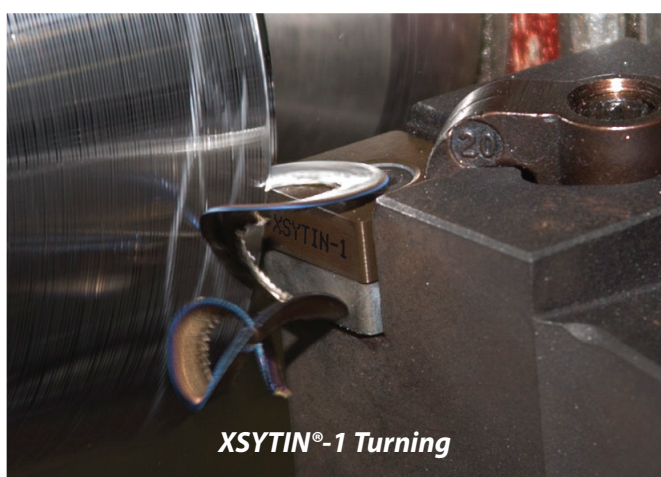
New!!!

XSYTIN®-1

Phase-Toughened Ceramic Inserts

Ideal for Machining:

- Heat-Resistant Super Alloys
- Cast Iron
- Nodular Iron
- Ductile Iron
- Steel Alloys
- Stainless Steel...



XSYTIN®-1 is engineered to machine more materials than any other ceramic grade in the industry today. It's designed to mill, turn and groove the most difficult materials you can encounter...and do it at extreme feed rates with the high surface footage of ceramic inserts. The end result is unbelievable and exciting!

For more information about XSYTIN®-1 or to schedule a demo, please visit www.greenleafcorporation.com/xsytin-1.

Let us show you how this could be the answer to your most demanding cuts.

Because you're not cutting butter



Greenleaf Corporation is ISO 9001 Certified.



Greenleaf®

Saegertown, PA 16433 | 814-763-2915 | www.greenleafcorporation.com | www.greenleafglobalsupport.com

New!!!

XSYTIN®-1

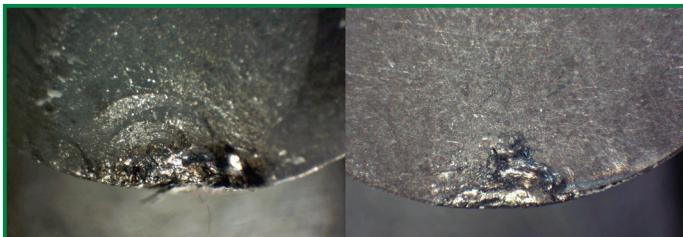


TEST DATA - TURNING

MACHINE	MORI-SEIKI NL 3000	
OPERATION	TURNING	
MATERIAL	Rene 65 50 R/c	
INSERT	COMPETITOR RNGN 45 T1	GREENLEAF RNGN 43 T1 GRADE XSYTIN®-1
SFM	700 (213 m/min)	700 (213 m/min)
IPR	.008" (0,2 mm)	.018" (0,45 mm)
DOC	.035" (0,88 mm)	.035" (0,88 mm)

COMPETITOR INSERT

XSYTIN®-1



2x

Faster feed rate!

TEST DATA - MILLING

MACHINE	MAZAK	
OPERATION	MILLING	
MATERIAL	Inconel 718 36 R/c	
INSERT	COMPETITOR RPGN 43	GREENLEAF RPGN 43 GRADE XSYTIN®-1
RPM	3183	3183
DIA.	3.150" (80 mm)	3.150" (80 mm)
SFM	2620 (800 m/min)	2620 (800 m/min)
IPT	.007" (0,18 mm)	.007" (0,18 mm)
LOC	23.6" (600 mm)	23.6" (600 mm)
DOC	.039" (1 mm)	.039" (1 mm)
WOC	2.36" (60 mm)	2.36" (60 mm)
PASSES PER EDGE	8	16

2x

Longer tool life!



Greenleaf®

Saegertown, PA 16433 U.S.A. | 800-458-1850 • 814-763-2915
www.greenleafcorporation.com | www.greenleafglobalsupport.com

Greenleaf Europe B.V.
Schimmert, The Netherlands
+31-45-404-1774
eurooffice@greenleafcorporation.com

Greenleaf (Hunan) High-Tech Materials Co., Ltd.
Changsha, Hunan 410205, China
+86-731-89954796
info@greenleafcorporation.com.cn