

MAXIMUM DURABILITY WITHIN YOUR GRIP

Rugged, reusable, and sustainable containers for any application.

ssitote.com

SSI SCHAEFER

SSI SCHAEFER

SUSTAINABLE SOLUTIONS FROM A SINGLE SOURCE

Protect your investment by utilizing durable containers for assembly, shipping and returns, and even storage. All SSI SCHAEFER packaging products are reusable and used in a wide variety of industries including agriculture, automotive, distribution, electronics, food, government, heavy-equipment, manufacturing, recreation vehicles, and even white durable goods. Whatever your need, SSI SCHAEFER has a solution for you.

The SSI SCHAEFER family of reusable containers is the result of ongoing research into industry trends, optimal designs, and potential savings to better serve customers.

From ergonomic totes for manual handling to high quality containers for automated systems, all SSI SCHAEFER reusable containers are injection molded from high-density polyethylene or polypropylene to provide the highest quality and performance under any circumstance. Custom

hot stamps, logos, and an array of colors can complement your branding and add detail for your supply chain processes.

By choosing SSI SCHAEFER, quality is first and foremost. Plus, SSI SCHAEFER has industry experts to consult, design, and even create a custom packaging solution to meet your specific needs.



The extensive SSI SCHAEFER range of reusable packaging includes more than 2,000 different models, sizes, and types—giving you the flexibility to find the right container for your application. You'll find practical solutions for everyday warehouse, production facility, and transport needs.

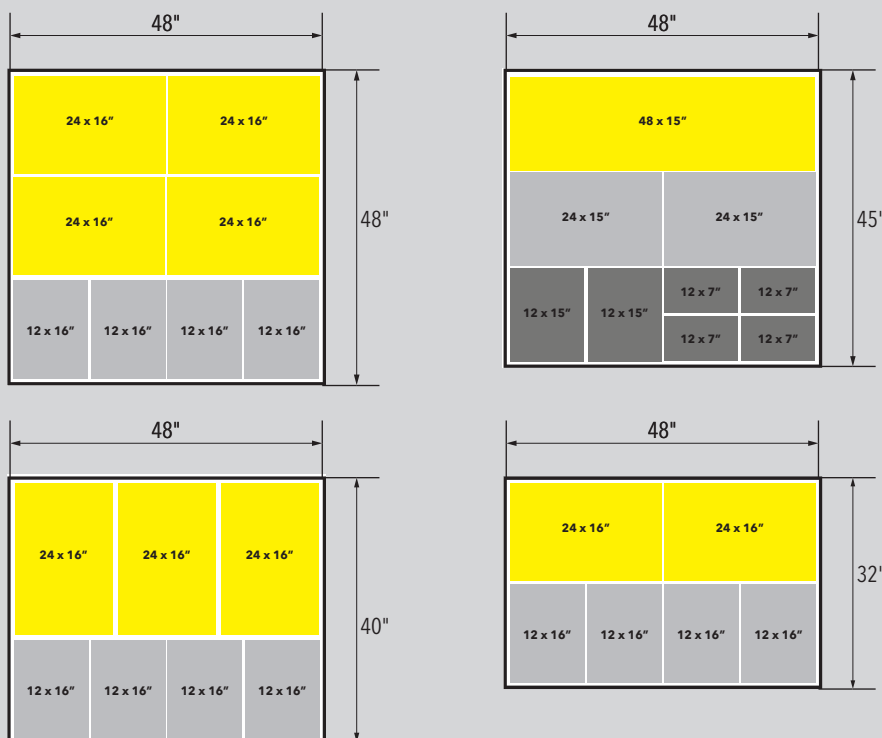
SSI SCHAEFER has a complete range of accessories to compliment each model so operation protocols are easily followed. Each container line from SSI SCHAEFER allows for easy assembly process controls and protects contents during storage and transport.

INCORPORATE A SUSTAINABLE OPTION FOR YOUR SUPPLY CHAIN

- Meet or exceed sustainability goals.
- Increase employee safety.
- Reduce freight cost.
- Maintain supply chain protocols and operational procedures.
- Custom colors and hot stamping add visibility and branding.
- Both 40x48 and 45x48 ALIAG footprints available.
- Built with ergonomics in mind for easy handling and transport.
- Durable enough for any industry.

CUBING INFORMATION

SSI SCHAEFER containers are designed for a variety of pallet footprints.



BRING SUSTAINABILITY TO YOUR SUPPLY CHAIN.

SSI SCHAEFER offers durable but lightweight straight wall containers that offer the utmost parts per container ratio. Designed for ergonomic comfort, SSI SCHAEFER straight wall containers are easy to transport.

AF TranStac® returnable containers efficiently transport goods.

These straight wall containers are available in over 40 models and work great with automated systems and assembly processes. With over six footprints, you'll find barcode placements on all four sides as well as an 8.25 x 3.25" molded card holder.

AF containers come in a variety of versions: ventilated bottoms, ventilated sidewalls, and reinforced bottoms. Plus, AF containers have optional detached lids. The AF TranStac® containers are the original industry standard and are perfect for heavy duty and demanding applications.

AF TRANSTAC® FEATURES

- Over 40 models and six footprints.
- Heights from 4" to 14".
- Ergonomic handles on two sides.
- Large, flat identification areas.
- Based on AIAG standard sizes.
- Meets NAFTA specifications.
- Compatible with 48" x 45" pallet systems, AFP, NFP, SFK, and SMP models.
- Detached lid options for 12 x 15 and 24 x 15 footprint.
- Load capacity is 55 lbs.
- Maximum stack load is 1,320 lbs.

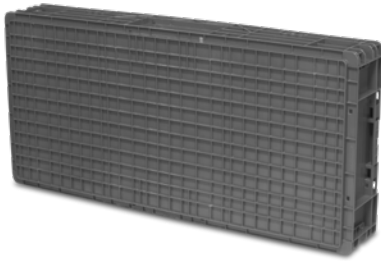


AF24150L



AF12150L

STRAIGHT WALL CONTAINERS



Ribbed



Textured



Crosspad®



Smooth bottom



Reinforced



Crosstac®

Product#	Bottom	Boxes per layer	Outside Dim. L x W x H (inches)	Inside Dim. L x W x H (inches)	Weight (lbs)	Capacity (Cu Ft)	t/l Qty	FOB	Drain Holes	Ventilated Walls
AF120705*	Textured	24	12.0 x 7.4 x 5.0	9.3 x 5.3 x 4.3	1.20	0.12	12,480	Charlotte		
AF121504	Crosstac	12	14.9 x 11.9 x 4.0	13.0 x 9.4 x 2.9	2.20	0.21	7,800	Charlotte		
AF121505	Smooth	12	15.0 x 12.0 x 5.0	12.9 x 9.3 x 4.0	2.20	0.28	6,240	Charlotte	X	X
AF121507	Ventilated	12	15.0 x 12.0 x 7.5	12.9 x 9.3 x 6.5	2.60	0.46	4,056	Charlotte		X
AF121509	Smooth	12	15.0 x 12.0 x 9.5	12.9 x 9.3 x 8.8	3.40	0.62	3,120	México	X	
AF241504	Crosstac	6	23.9 x 14.9 x 4.0	21.4 x 13.0 x 2.9	3.60	0.47	3,900	Charlotte		
AF241505	Reinforced	6	24.0 x 15.0 x 5.0	21.3 x 12.9 x 4.0	4.10	0.66	3,120	Charlotte		
AF241507	Ventilated	6	24.0 x 15.0 x 7.5	21.3 x 12.9 x 6.5	4.00	1.05	2,028	Charlotte		X
AF241509	Smooth	6	24.0 x 15.0 x 9.5	21.3 x 12.9 x 8.8	5.40	1.41	1,560	México		
	Reinforced	6	24.0 x 15.0 x 9.5	21.3 x 12.9 x 8.5	6.40	1.11	1,560	México	X	
AF241511	Textured	6	23.9 x 14.9 x 10.9	21.3 x 12.9 x 10.2	5.90	1.60	1,404	México		
	Crosstac	6	23.9 x 14.9 x 10.9	21.4 x 13.0 x 9.8	6.20	1.50	1,404	México	X	
AF241514	Textured	6	23.9 x 14.9 x 14.5	21.3 x 12.9 x 13.8	7.40	2.20	1,092	México		
	Crosstac	6	23.9 x 14.9 x 14.5	21.4 x 13.0 x 13.4	9.60	2.20	1,092	México	X	
AF242207	Textured	4	23.9 x 22.4 x 7.3	21.3 x 20.4 x 6.7	5.80	1.70	1,352	México		
	Crosstac	4	23.9 x 22.4 x 7.3	21.4 x 20.5 x 6.2	6.90	1.60	1,352	México		
AF242208	Textured	4	23.9 x 22.4 x 8.7	21.3 x 20.4 x 8.1	6.50	2.00	1,144	México		
AF242209	Textured	4	23.9 x 22.4 x 9.5	21.3 x 20.4 x 8.9	6.80	2.20	1,040	México		
AF242211	Smooth	4	23.9 x 22.4 x 10.9	21.3 x 20.4 x 10.2	7.00	2.60	936	México		
	Crosstac	4	23.9 x 22.4 x 10.9	21.4 x 20.5 x 9.8	7.80	2.50	936	México	X	
	Reinforced	6	23.9 x 22.4 x 10.9	21.4 x 20.5 x 9.6	9.50	2.40	936	México		
AF242214	Smooth	4	23.9 x 22.4 x 14.5	21.3 x 20.4 x 13.8	9.40	3.50	728	México		
	Crosstac	4	23.9 x 22.4 x 14.5	21.4 x 20.5 x 13.4	10.30	3.40	728	México		
	Reinforced	4	23.9 x 22.4 x 14.5	21.4 x 20.5 x 13.2	11.50	3.40	728	México		
AF481507**	Smooth	3	47.9 x 14.9 x 7.5	46.3 x 13.3 x 6.9	6.70	2.50	1,014	México	X	
	Crosspad	3	47.9 x 14.9 x 7.5	46.3 x 13.3 x 6.4	7.20	2.30	1,014	México	X	
	Crosstac	3	47.9 x 14.9 x 7.5	46.3 x 13.3 x 6.4	8.90	2.30	1,014	México		
AF481511**	Smooth	3	47.9 x 14.9 x 10.9	46.3 x 13.3 x 10.3	8.80	3.70	702	México	X	
	Crosspad	3	47.9 x 14.9 x 10.9	46.3 x 13.3 x 9.8	9.90	3.50	702	México	X	
	Crosstac	3	47.9 x 14.9 x 10.9	46.3 x 13.3 x 9.8	11.20	3.50	702	México		
AF482207	Ribbed	2	47.9 x 22.4 x 7.3	45.3 x 20.3 x 6.3	12.20	3.30	676	Charlotte		

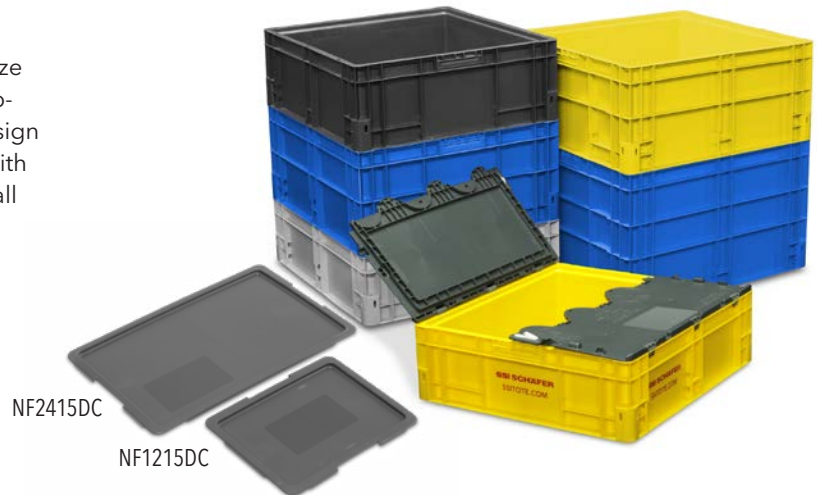
*Rimless version available. **Open hand holes available for easy gripping. For the latest in product sizes and options, visit ssitote.com/products.



Maximize function and fit with the all new NF NewStac®.

NF NewStac® containers from SSI SCHAEFER maximize function and minimize handling with features that support multiple industries. The NewStac lightweight design allows you to pack more products while complying with 33 lbs. handheld standards. In addition, a new sidewall design and rimless option provide uninterrupted surfaces for placards.

NF NewStac containers come in 17 sizes allowing for a more secure fit. You'll find a patented label pocket, which allows for easy labeling and protection from folding damage or accidental removal.



NF NEWSTAC® FEATURES

- Lightest weight tote per similar size in the industry.
- Available in 17 sizes.
- 3 bottom designs to choose from: Smooth, Crosspad®, or Crosstac®.
- Patented label pocket to protect KanBan cards.
- Improved impact strength.
- Rimless versions and smooth sidewall contours for optimal placard application.
- 100% compatible with existing box lines.
- Drain holes available.
- Improved ergonomic features, which allow for safe handling.
- Label texture area on some models.
- Both detached and attached lid options are available for certain model numbers.
- Compatible with 45 x 48 pallet systems, AFP, NFP, SFK, and SMP.
- Load capacity is 33 lbs.
- Maximum stack load 900 lbs.



STRAIGHT WALL CONTAINERS

Smooth bottom

Crosspad®

Crosstac®

Reinforced

Product#	Bottom	Boxes per layer	Outside Dim. L x W x H (inches)	Inside Dim. L x W x H (inches)	Weight (lbs)	Capacity (Cu Ft)	t/l Qty	FOB	Drain Holes	Label Text. Area	Attached Lids	Open Hand Holes
NF121504**	Smooth*	12	14.9 x 11.9 x 4.0	13.1 x 9.5 x 3.47	1.40	0.25	7,488	Charlotte	x			
NF121505**	Smooth	12	14.9 x 11.9 x 5.0	13.1 x 9.5 x 4.4	1.60	0.32	5,616	Char./Mex.	X	X***		
	Reinforced	12	14.9 x 11.9 x 5.0	13.1 x 9.5 x 4.2	1.80	0.30	5,616	México	X	X		
NF121507**	Smooth	12	14.9 x 11.9 x 7.5	13.1 x 9.5 x 6.9	2.20	0.50	3,744	Char./Mex.	X	X***		
	Reinforced	12	14.9 x 11.9 x 7.5	13.1 x 9.5 x 6.7	2.30	0.49	3,744	México	X	X		
NF121508**	Smooth	12	14.9 x 11.9 x 8.7	13.1 x 9.5 x 8.1	2.40	0.58	3,120	Charlotte				
	Reinforced	12	14.9 x 11.9 x 8.7	13.1 x 9.5 x 7.9	2.50	0.58	3,120	México	X	X		
NF121511	Smooth	12	14.9 x 11.9 x 10.9	13.1 x 9.5 x 10.3	2.80	0.74	2,496	Charlotte				
NF241504**	Smooth*	6	23.9 x 14.9 x 4.0	21.5 x 13.1 x 3.4	2.40	0.55	3,744	Charlotte	X			
	Crosspad	6	23.9 x 14.9 x 4.0	21.5 x 13.1 x 2.8	2.60	0.46	3,744	Charlotte	X			
	Crosstac	6	23.9 x 14.9 x 4.0	21.5 x 13.1 x 2.8	3.00	0.46	3,744	Charlotte	X			
NF241505**	Smooth	6	23.9 x 14.9 x 5.0	21.5 x 13.1 x 4.4	2.80	0.71	2,808	Char./Mex.	X			
	Crosspad	6	23.9 x 14.9 x 5.0	21.5 x 13.1 x 3.8	3.00	0.62	2,808	México	X	X		
	Crosstac	6	23.9 x 14.9 x 5.0	21.5 x 13.1 x 3.8	3.40	0.62	2,808	México	X	X		
NF241507**	Smooth	6	23.9 x 14.9 x 7.5	21.5 x 13.1 x 6.9	3.40	1.12	1,872	Char./Mex.	X	X***		
	Crosspad	6	23.9 x 14.9 x 7.5	21.5 x 13.1 x 6.3	3.60	1.03	1,872	Char./Mex.	X	X***		
	Crosstac	6	23.9 x 14.9 x 7.5	21.5 x 13.1 x 6.3	4.20	1.03	1,872	Char./Mex.				
NF241508**	Smooth	6	23.9 x 14.9 x 8.7	21.5 x 13.1 x 8.1	3.80	1.32	1,560	Charlotte				
	Crosspad	6	23.9 x 14.9 x 8.7	21.5 x 13.1 x 7.5	4.00	1.22	1,560	Charlotte				
	Crosstac	6	23.9 x 14.9 x 8.7	21.5 x 13.1 x 7.5	4.40	1.22	1,560	Charlotte				
NF241511	Smooth	6	23.9 x 14.9 x 10.9	21.5 x 13.1 x 10.3	4.40	1.68	1,248	Charlotte				
	Crosspad	6	23.9 x 14.9 x 10.9	21.5 x 13.1 x 9.8	4.60	1.58	1,248	Charlotte				
	Crosstac	6	23.9 x 14.9 x 10.9	21.5 x 13.1 x 9.8	5.20	1.58	1,248	Charlotte				
NF241514	Smooth	6	23.9 x 14.9 x 14.5	21.5 x 13.1 x 13.9	5.80	2.26	936	Charlotte				
	Crosspad	6	23.9 x 14.9 x 14.5	21.5 x 13.1 x 13.3	6.40	2.17	936	Charlotte				
	Crosstac	6	23.9 x 14.9 x 14.5	21.5 x 13.1 x 13.3	6.60	2.17	936	Charlotte				
NF321507	Smooth	4	32.0 x 15.0 x 7.5	29.5 x 13.1 x 6.9	4.40	1.50	1,248	Charlotte				
NF242207	Smooth	4	23.9 x 22.4 x 7.5	21.5 x 20.6 x 6.7	4.50	1.80	1,248	Charlotte	X	X	X	
	Crosspad	4	23.9 x 22.4 x 7.5	21.5 x 20.6 x 6.3	4.60	1.70	1,248	Charlotte	X	X	X	
	Crosstac	4	23.9 x 22.4 x 7.5	21.5 x 20.6 x 6.3	5.40	1.60	1,248	Charlotte	X	X	X	
NF242208	Smooth	4	23.9 x 22.4 x 8.7	21.5 x 20.6 x 7.9	4.90	2.10	1,040	Charlotte	X	X	X	
	Crosspad	4	23.9 x 22.4 x 8.7	21.5 x 20.6 x 7.5	5.00	2.00	1,040	Charlotte	X	X	X	
	Crosstac	4	23.9 x 22.4 x 8.7	21.5 x 20.6 x 7.5	5.80	2.00	1,040	Charlotte	X	X	X	
NF242211	Smooth	4	23.9 x 22.4 x 10.9	21.5 x 20.6 x 10.1	6.00	2.60	832	Charlotte	X	X	X	
	Crosspad	4	23.9 x 22.4 x 10.9	21.5 x 20.6 x 9.7	6.10	2.60	832	Charlotte	X	X	X	
	Crosstac	4	23.9 x 22.4 x 10.9	21.5 x 20.6 x 9.7	6.90	2.50	832	Charlotte	X	X	X	
NF242214	Smooth	4	23.9 x 22.4 x 14.5	21.5 x 20.6 x 13.8	7.40	3.60	624	Charlotte	X	X	X	
	Crosspad	4	23.9 x 22.4 x 14.5	21.5 x 20.6 x 13.3	7.50	3.50	624	Charlotte	X	X	X	
	Crosstac	4	23.9 x 22.4 x 14.5	21.5 x 20.6 x 13.3	8.30	3.40	624	Charlotte	X	X	X	
NF481507	Smooth	3	47.9 x 14.9 x 7.5	45.5 x 13.2 x 6.9	7.20	2.40	936	Charlotte	X	X		X
	Crosspad	3	47.9 x 14.9 x 7.5	45.5 x 13.2 x 6.3	7.20	2.30	936	Charlotte	X	X		X
	Crosstac		47.9 x 14.9 x 7.5	45.5 x 13.2 x 6.3	9.00	2.20	936	Charlotte	X	X		X
NF481511	Smooth	3	47.9 x 14.9 x 10.9	45.5 x 13.2 x 10.3	8.00	3.60	624	Charlotte	X	X		X
	Crosspad	3	47.9 x 14.9 x 10.9	45.5 x 13.2 x 9.7	8.10	3.50	624	Charlotte	X	X		X
	Crosstac	3	47.9 x 14.9 x 10.9	45.5 x 13.2 x 9.7	9.30	3.40	624	Charlotte	X	X		X

*Rimless. **Detached lid option available. *** Mexico Only.

For the latest in product sizes and options, visit ssitote.com/products.

EF EURO-FIX CONTAINER. Sturdy yet lightweight and easy to clean.

EF straight wall containers are durable, lightweight, and work with 32" x 48", 40" x 48", and 48" x 48" system footprints. Plus, EF handheld containers withstand extreme temperatures, making them ideal for applications in heavy industrial or manufacturing facilities.

EF straight wall containers feature a smooth base and interior, which allows for maximum fill.

EF EURO-FIX CONTAINER FEATURES

- Available in 18 sizes, six footprints.
- Heights from 3" to 16.5".
- Spacing, number and thickness of ribs add even more strength and years of life to the container.
- Designed for high cube utilization and strength.
- Made of polypropylene which makes the Euro-Fix economical, durable and easy to clean.
- Available in conductive version.
- Over 15 lids, clips and accessories.
- Compatible with EFP 48 x 32 pallet system.



SOLID BASE & SIDES



SOLID BASE & MESH SIDES



MESH BASE & MESH SIDES

Solid base & solid sides

Product#	Outside Dim. L x W x H (inches / mm)	Inside Dim. L x W x H (inches / mm)	Weight (lbs / kg)	Capacity (Cu Ft / Liters)	Recommended Load (lbs / Kg)	Stock	FOB
EF 2120	7.9 x 6.0 x 4.7 / 200 x 148 x 117	6.0 x 4.1 x 4.0 / 153 x 106 x 114	0.60 / 0,30	0.07 / 2,00	22 / 10	Light Gray and Red	Charlotte
EF 3120	11.9 x 7.9 x 4.7 / 299 x 199 x 117	9.9 x 6.0 x 4.0 / 254 x 154 x 114	1.10 / 0,50	0.17 / 4,70	33 / 15	Light Gray and Red	Charlotte
EF 3170	11.9 x 7.9 x 6.7 / 299 x 199 x 170	9.9 x 6.0 x 5.8 / 253 x 153 x 168	1.40 / 0,60	0.25 / 7,00	33 / 15	Light Gray and Red	Charlotte
EF 3220	11.9 x 7.9 x 8.7 / 299 x 199 x 220	9.9 x 6.0 x 7.8 / 253 x 153 x 217	1.80 / 0,80	0.32 / 9,00	33 / 15	Light Gray Only	Charlotte
EF 4070	15.8 x 11.9 x 3.0 / 399 x 299 x 75	14.1 x 10.1 x 2.4 / 359 x 259 x 73	1.70 / 0,80	0.24 / 6,90	33 / 15	Light Gray Only	Charlotte
EF 4120	15.8 x 11.9 x 4.8 / 399 x 299 x 120	13.9 x 10.0 x 4.1 / 356 x 256 x 117	1.80 / 0,80	0.39 / 11,10	33 / 15	Light Gray and Red	Charlotte
EF 4170	15.8 x 11.9 x 6.7 / 399 x 299 x 170	13.9 x 10.0 x 5.7 / 354 x 254 x 167	2.40 / 1,10	0.55 / 15,70	33 / 15	Light Gray Only	Charlotte
EF 4220	15.8 x 11.9 x 8.7 / 399 x 299 x 220	13.9 x 10.0 x 7.7 / 355 x 255 x 217	2.90 / 1,30	0.72 / 20,40	33 / 15	Light Gray and Red	Charlotte
EF 4320	15.8 x 11.9 x 12.6 / 399 x 299 x 320	14.1 x 10.2 x 12.0 / 354 x 253 x 316	3.70 / 1,70	1.05 / 29,70	33 / 15	Light Gray Only	Charlotte
EF 4440	15.8 x 15.8 x 16.6 / 399 x 399 x 420	13.9 x 13.9 x 15.6 / 353 x 353 x 417	6.60 / 3,00	1.90 / 53,90	33 / 15	Light Gray Only	Charlotte
EF 6120	23.7 x 15.8 x 4.8 / 599 x 399 x 120	21.7 x 13.9 x 3.8 / 553 x 353 x 117	3.50 / 1,60	0.82 / 23,30	44 / 20	Light Gray Only	Charlotte
EF 6140	23.7 x 15.8 x 5.6 / 599 x 399 x 140	21.7 x 13.9 x 4.6 / 553 x 353 x 137	3.70 / 1,70	0.97 / 27,40	44 / 20	Light Gray Only	Charlotte
EF 6150	23.7 x 15.8 x 6.0 / 599 x 399 x 150	21.7 x 13.9 x 5.0 / 553 x 353 x 147	3.90 / 1,80	1.04 / 29,40	44 / 20	Light Gray Only	Charlotte
EF 6180***	23.7 x 15.8 x 7.1 / 599 x 399 x 180	21.7 x 13.9 x 6.1 / 553 x 353 x 176	4.40 / 2,00	1.25 / 35,40	44 / 20	Light Gray Only	Charlotte
EF 6220***	23.7 x 15.8 x 8.7 / 599 x 399 x 220	21.7 x 13.9 x 7.7 / 553 x 353 x 216	5.60 / 2,50	1.54 / 43,50	44 / 20	Light Gray and Red	Charlotte
EF 6320***	23.7 x 15.8 x 12.6 / 599 x 399 x 320	21.7 x 13.9 x 11.6 / 553 x 353 x 316	6.80 / 3,10	2.25 / 63,70	44 / 20	Light Gray and Red	Charlotte
EF 6420***	23.7 x 15.8 x 16.6 / 599 x 399 x 420	21.7 x 13.9 x 15.6 / 553 x 353 x 416	9.20 / 4,20	2.96 / 83,80	44 / 20	Light Gray and Red	Charlotte
EF 8320	31.5 x 23.7 x 12.6 / 800 x 600 x 320	29.6 x 21.8 x 11.3 / 753 x 553 x 316	12.00 / 5,50	4.36 / 123,50	44 / 20	Light Gray Only	Charlotte

*** 7.5 x 5.5 index card holder is standard.

**Solid base & mesh sides**

Product#	Outside Dim. L x W x H (inches / mm)	Inside Dim. L x W x H (inches / mm)	Weight (lbs / kg)	Capacity (Cu Ft / Liters)	Recommended Load (lbs / Kg)	Stock	FOB
EF 4121	15.8 x 11.9 x 4.8 / 399 x 299 x 120	13.9 x 10.0 x 4.0 / 356 x 256 x 117	1.80 / 0,80	0.38 / 10,80	33 / 15	Light Gray	Charlotte
EF 4221	15.8 x 11.9 x 8.7 / 399 x 299 x 217	13.9 x 9.9 x 7.6 / 355 x 255 x 217	2.60 / 1,20	0.71 / 20,10	33 / 15	Light Gray and Red	Charlotte
EF 6221	23.7 x 15.8 x 8.7 / 599 x 399 x 220	21.7 x 13.8 x 7.6 / 553 x 353 x 216	4.70 / 2,10	1.54 / 43,60	44 / 20	Light Gray and Red	Charlotte
EF 6321	23.7 x 15.8 x 12.6 / 599 x 399 x 320	21.7 x 13.8 x 11.6 / 553 x 353 x 316	5.30 / 2,40	2.25 / 63,70	44 / 20	Light Gray and Red	Charlotte
EF 6421	23.7 x 15.8 x 16.6 / 599 x 399 x 420	21.7 x 13.8 x 15.5 / 553 x 353 x 416	7.70 / 3,50	2.96 / 83,80	44 / 20	Light Gray and Red	Charlotte

Mesh base & mesh sides

Product#	Outside Dim. L x W x H (inches / mm)	Inside Dim. L x W x H (inches / mm)	Weight (lbs / kg)	Capacity (Cu Ft / Liters)	Recommended Load (lbs / Kg)	Stock	FOB
EF 4123	15.8 x 11.9 x 4.8 / 399 x 299 x 120	13.9 x 10.0 x 4.0 / 356 x 256 x 114	1.60 / 0,70	0.37 / 10,60	33 / 15	Light Gray	Charlotte
EF 4223	15.8 x 11.9 x 8.7 / 399 x 299 x 220	13.9 x 10.0 x 7.6 / 355 x 255 x 214	2.30 / 1,00	0.70 / 19,80	33 / 15	Light Gray and Red	Charlotte
EF 6223	23.7 x 15.8 x 8.7 / 599 x 399 x 220	21.7 x 13.8 x 7.6 / 553 x 353 x 213	4.30 / 2,00	1.51 / 42,90	33 / 15	Light Gray and Red	Charlotte
EF 6323	23.7 x 15.8 x 12.6 / 599 x 399 x 320	21.7 x 13.9 x 11.5 / 553 x 353 x 296	4.80 / 2,20	2.23 / 63,10	33 / 15	Light Gray and Red	Charlotte
EF 6423	23.7 x 15.8 x 16.6 / 599 x 399 x 420	21.7 x 13.8 x 15.5 / 553 x 350 x 413	6.80 / 3,10	2.94 / 83,20	33 / 15	Light Gray and Red	Charlotte

**SHE LIFTING TROLLEY**

- For containers 600 x 400.
 - Diameter of swivel casters 125 mm.
 - Diameter of rigid castors 200 mm.
 - Max. Load 200 kg.
 - Color - Painted blue-gray*.
- (conductive material available upon request)
Product # 16170

ELB LIGHT CONTAINER. Lighter by design, yet extremely durable

ELB straight wall containers are great for special applications, mail order items, food, or even electronics that need electro-static dissipative protection. Whatever the application, ELB can handle. With two attached lid options, items stay secure and dust-free.

An innovative lightweight handheld container, the ELB is durable but is light enough for everyday use.

Plus, the ELB is sensibly priced. Ergonomic grips allow for easy handling and carrying. Optional attached lids for greater security and three base options. The ELB is capable of carrying up to 150 pounds.

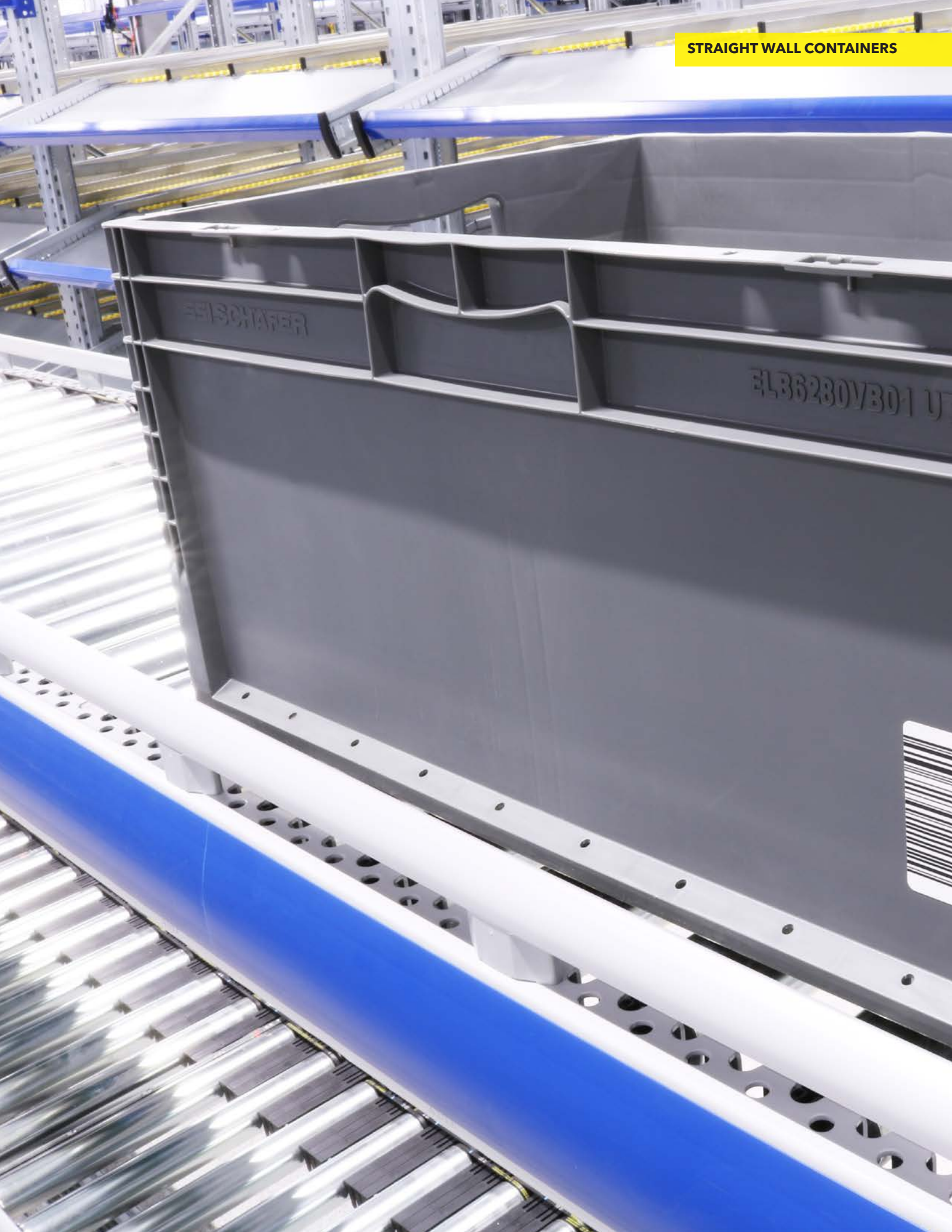
Great for electronics, food, retail, and special applications.



ELB LIGHT CONTAINER FEATURES

- Available in 6 sizes.
- Heights: 4.5" up to 12.6".
- Two attached lid options.
- Polypropylene.
- Three base options are available. SSI SCHAEFER stocks all ELB smooth bottom models.

Product#	Bottom	Outside Dim. L x W x H (inches / mm)	Inside Dim. L x W x H (inches / mm)	Weight (lbs / kg)	Capacity (Cu Ft / Liters)	Recommended Load (lbs / kg)	Stock	FOB
ELB 4120	Smooth	15.7 x 11.8 x 4.7 / 400 x 300 x 120	14.0 x 10.1 x 4.5 / 355 x 255 x 114	1.10 / 0,50	0.37 / 10,40	40 / 18,1	Light Grey	Charlotte
ELB 4220	Smooth	15.7 x 11.8 x 8.7 / 400 x 300 x 220	14.0 x 10.1 x 8.5 / 355 x 255 x 214	1.80 / 0,80	0.72 / 19,50	40 / 18,1	Light Grey	Charlotte
ELB 6120	Smooth	23.6 x 15.7 x 4.7 / 600 x 400 x 120	21.9 x 14.0 x 4.5 / 555 x 355 x 114	2.00 / 0,90	0.82 / 22,60	40 / 18,1	Light Grey	Charlotte
ELB 6220	Smooth	23.6 x 15.7 x 8.7 / 600 x 400 x 220	21.9 x 14.0 x 8.5 / 555 x 355 x 214	3.10 / 1,40	1.54 / 43,30	40 / 18,1	Light Grey	Charlotte
ELB6280	Smooth	23.6 x 15.7 x 11.0 / 600 x 400 x 280	22.3 x 14.4 x 10.3 / 557 x 357 x 263	3.70 / 1,70	1.80 / 50,00	40 / 18,1	Light Grey	Charlotte
ELB 6320	Smooth	23.6 x 15.7 x 12.6 / 600 x 400 x 320	21.9 x 14.0 x 12.4 / 555 x 355 x 314	4.00 / 1,80	2.26 / 62,00	40 / 18,1	Light Grey	Charlotte





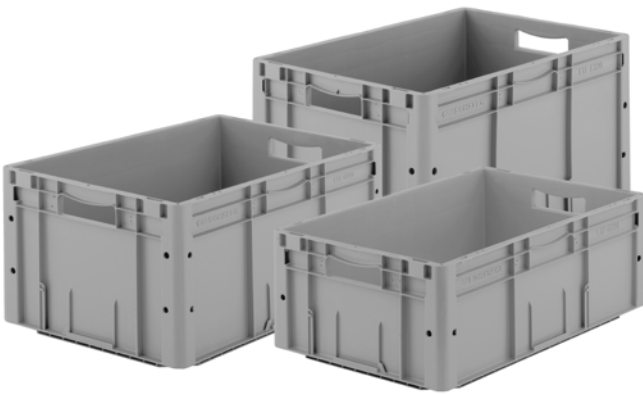
LTF CONTAINERS. Economical choice for medium-duty applications.

LTF containers feature a reinforced base with patented design for silent running on conveyor systems. This straight wall container features perpendicular sides for maximum usable internal space and specially designed corner posts to facilitate

high stacking loads and easy cleaning. Also, the LTF has a protected area for barcodes and are RFID compatible. The LTF is a great choice for medium-duty applications.

Product#	Bottom	Outside Dim. L x W x H (inches / mm)	Inside Dim. L x W x H (inches / mm)	Weight (lbs / kg)	Capacity (Cu Ft / Liters)	Recommended Load (lbs / kg)	Stock	FOB
LTF6120	Reinforced	23.4 x 15.6 x 4.7 / 600 x 400 x 119	22.2 x 14.4 x 4.0 / 564 x 366 x 102	3.50 / 1,60	0.74 / 21,00	66 / 30	Light Grey	Charlotte
LTF6220	Reinforced	23.6 x 15.8 x 8.7 / 601 x 400 x 220	22.2 x 14.4 x 7.4 / 565 x 366 x 187	4.50 / 2,00	1.50 / 42,00	66 / 30	Light Grey	Charlotte
LTF6280	Reinforced	23.6 x 15.8 x 11.0 / 600 x 400 x 280	22.2 x 14.4 x 9.7 / 564 x 366 x 247	4.90 / 2,20	1.90 / 53,80	66 / 30	Light Grey	Charlotte
LTF6320	Reinforced	23.6 x 15.8 x 12.6 / 600 x 400 x 320	22.2 x 14.4 x 11.3 / 564 x 366 x 287	5.40 / 2,40	2.10 / 59,50	66 / 30	Light Grey	Charlotte

All models noted include open handles with no door drops.



LTF CONTAINER FEATURES

- Stable impact surface for use in automatic mini-load systems rounded corner design for ease of use with conveyors.
- Smooth walls for easy cleaning.
- Double walled corner frames for high load stacking.
- LTF containers come standard with a protected barcode area and are RFID compatible.
- SSI SCHAEFER stocks reinforced bottom LTF containers. Other bottom options are available with minimum quantities.

COLLAPSIBLE CONTAINERS: SAVE SHIPPING COSTS WITH COLLAPSIBLE TOTES

Collapsible containers offer manufacturers a great way to ship and store components. The collapsible and lightweight design allows for lower cost shipments. Plus, adding sustainability into your supply chain is easy with collapsible containers.

CF CONTAINERS. Specifically developed for AIAG shipping standards.

Compatible with all 48" x 45" systems on the market, the CF collapsible makes a great choice. Also, you can use CF collapsible containers in conjunction with NF Newstac and AF Transtac straight-wall container systems.

Equipped with true ergonomic pocket handles, you'll find the CF collapsible container addresses safety concerns as well.



"We use SSI SCHAEFER containers to deliver provisions to our yacht clients. Since the containers collapse, they are the best thing in the world! They carry a load, stack, and are easy to clean."

Joel Aranha, Island Purveyors



CF CONTAINER FEATURES

- Attached lids are available with minimum order quantities.
- Stack with NF Newstac® and AF Transtac® containers.
- Equipped with true ergonomic pocket handles for easy lifting and handling.
- Completely 100% recyclable, including pivot pins. no separation of components necessary.
- Compatible with 45 x 48 pallet systems: AFP, NFP, SFK, and SMP.
- Load capacity 33lbs. Maximum stack load 500lbs.

Product#	Bottom	Boxes per layer	Outside Dim. L x W x H (inches)	Inside Dim. L x W x H (inches)	Weight (lbs)	Return Ratio	Capacity (Cu Ft)	t/l Erect	t/l Collapsed	FOB	Attached Lids
CF121507	Smooth	12	11.9 x 14.9 x 7.5	9.86 x 13.65 x 6.9	2.80	2.3	0.50	3,744	9,360	Charlotte	
	Lids	12	11.9 x 14.9 x 8.1	9.86 x 13.65 x 7.0	+1.00	2.1	0.50	3,744	7,488	Charlotte	X
CF241507	Smooth	6	23.9 x 14.9 x 7.5	21.9 x 13.7 x 6.9	4.20	2.8	1.20	1,872	5,304	Charlotte	
	Crosspad	6	23.9 x 14.9 x 7.5	21.9 x 13.7 x 6.4	4.40	2.8	1.10	1,872	5,304	Charlotte	
	Crosstac	6	23.9 x 14.9 x 7.5	21.9 x 13.7 x 6.4	4.80	2.8	1.10	1,872	5,304	Charlotte	
	Lids	6	23.9 x 14.9 x 8.1	21.9 x 13.7 x 7.0	+2.00	2.4	1.20	1,872	4,368	Charlotte	X
CF241511	Smooth	6	23.9 x 14.9 x 11.0	21.9 x 13.7 x 10.4	5.20	4.1	1.80	1,248	5,304	Charlotte	
	Crosspad	6	23.9 x 14.9 x 11.0	21.9 x 13.7 x 9.9	5.40	4.1	1.70	1,248	5,304	Charlotte	
	Crosstac	6	23.9 x 14.9 x 11.0	21.9 x 13.7 x 9.9	5.80	4.1	1.70	1,248	5,304	Charlotte	
	Lids	6	23.9 x 14.9 x 11.6	21.9 x 13.7 x 10.5	+2.00	3.5	1.80	1,248	4,368	Charlotte	X
CF241514	Smooth	6	23.9 x 14.9 x 14.5	21.9 x 13.7 x 13.9	6.80	4.0	2.40	936	3,744	Charlotte	
	Crosspad	6	23.9 x 14.9 x 14.5	21.9 x 13.7 x 13.4	7.00	4.0	2.30	936	3,744	Charlotte	
	Crosstac	6	23.9 x 14.9 x 14.5	21.9 x 13.7 x 13.4	7.40	4.0	2.30	936	3,744	Charlotte	
	Lids	6	23.9 x 14.9 x 15.1	21.9 x 13.7 x 14.0	+2.00	3.5	2.40	936	3,432	Charlotte	X
CF242207	Smooth	4	23.9 x 22.4 x 7.5	21.9 x 21.2 x 6.9	6.20	2.8	1.80	1,248	3,536	Charlotte	
	Crosspad	4	23.9 x 22.4 x 7.5	21.9 x 21.2 x 6.4	6.40	2.8	1.70	1,248	3,536	Charlotte	
	Crosstac	4	23.9 x 22.4 x 7.5	21.9 x 21.2 x 6.4	7.00	2.8	1.70	1,248	3,536	Charlotte	
	Lids	4	23.9 x 22.4 x 8.1	21.9 x 21.2 x 7.0	+2.40	2.4	1.90	1,248	2,912	Charlotte	X
CF242211	Smooth	4	23.9 x 22.4 x 11.0	21.9 x 21.2 x 10.4	7.20	4.1	2.80	832	3,536	Charlotte	
	Crosspad	4	23.9 x 22.4 x 11.0	21.9 x 21.2 x 9.9	7.40	4.1	2.70	832	3,536	Charlotte	
	Crosstac	4	23.9 x 22.4 x 11.0	21.9 x 21.2 x 9.9	8.40	4.1	2.70	832	3,536	Charlotte	
	Lids	4	23.9 x 22.4 x 11.6	21.9 x 21.2 x 10.5	+2.40	3.5	2.80	832	2,912	Charlotte	X
CF242214	Smooth	4	23.9 x 22.4 x 14.5	21.9 x 21.2 x 13.9	8.80	4.0	3.70	624	2,496	Charlotte	
	Crosspad	4	23.9 x 22.4 x 14.5	21.9 x 21.2 x 13.4	9.00	4.0	3.60	624	2,496	Charlotte	
	Crosstac	4	23.9 x 22.4 x 14.5	21.9 x 21.2 x 13.4	9.80	4.0	3.60	624	2,496	Charlotte	
	Lids	4	23.9 x 22.4 x 15.1	21.9 x 21.2 x 14.0	+2.40	3.5	3.80	624	2,288	Charlotte	X

Lids note: *Varies per bottom, add 0.1" to I/D of corresponding bottom.
For the latest in product sizes and options, visit ssitote.com/products.



STACK AND NEST CONTAINERS FOR WAREHOUSING AND MATERIAL-HANDLING APPLICATIONS

SSI SCHAEFER containers offer nesting ability, convenience, and are efficient in stacking. A 4:1 nest ratio means significant storage space savings and economic payback for shipping returns.

EFB Heavy Duty. Our strongest Stack and Next Container.

Designed for use in food processing, industrial, and distribution applications. The EFB container securely stacks when full and nest when empty to minimize freight and storage costs. Made by SSI SCHAEFER using heavy-duty FDA approved polypropylene or polyethylene for lasting durability. These containers resist oils and grease and are impervious to most chemicals.

Reinforced rim provides extra strength and stacking capacity. Available in four popular colors, blue, red, green and yellow. Utilize lids and labels for easy part identification.



EFB CONTAINER FEATURES

- Three sizes, three heights, one footprint.
- Made of polypropylene, FDA approved.
- Inventory stock in blue. Available in green, yellow, and red with minimum order quantities.
- Oil and grease resistant, and impervious to most chemicals.
- Optional lids latch securely into place.
- Compatible with Euro-pallet and 48" x 40" pallet models.
- All three containers interstack and nest with each other.
- Ergonomic handles offer an easy grip from the side or top.
- Built-in 3" x 2.25" label holder.
- Large, protected hot stamp areas.
- Protected bar-code areas.
- Easily conveyed on textured bottom.
- Easy to clean.

Product#	Outside Dim. Top L x W x H (inches / mm)	Outside Dim. Bottom L x W x H (inches / mm)	Inside Dim. Top L x W x H (inches / mm)	Inside Dim. Bottom L x W x H (inches / mm)	Weight (lbs / kg)	Capacity (Cu Ft / Litres)	Recommended Load (lbs / kg)	Stock	FOB
EFB642	23.6 x 15.7 x 7.9 / 600 x 400 x 200	18.9 x 13.1 x 7.9 / 479 x 332 x 200	19.8 x 14.3 x 7.7 / 504 x 363 x 196	18.6 x 12.8 x 7.7 / 472 x 325 x 196	4.40 / 2,00	1.30 / 36.00	44 / 20	Blue	Charlotte
EFB643	23.6 x 15.7 x 11.8 / 600 x 400 x 200	18.9 x 13.1 x 11.8 / 479 x 332 x 300	19.8 x 14.3 x 11.7 / 504 x 363 x 296	18.6 x 12.8 x 11.7 / 472 x 325 x 296	6.00 / 2,70	1.90 / 54.00	44 / 20	Blue	Charlotte
EFB644	23.6 x 15.7 x 15.7 / 600 x 400 x 400	18.9 x 13.1 x 15.7 / 479 x 332 x 400	19.8 x 14.3 x 15.6 / 504 x 363 x 396	18.6 x 12.8 x 15.6 / 472 x 325 x 396	7.50 / 3,40	2.50 / 72.00	44 / 20	Blue	Charlotte

Minimum order quantities for mesh sides and bottoms.



KFB Containers handle the tough stuff.

SSI SCHAEFER offers the KFB stack and nest container, which offers two nesting sizes with a stacking bail feature.

A patented bail design provides an easy stacking function that minimizes storage space and saves transport costs. Plus, the KFB has a secure plastic swivel stacking bar to help make stacking secure.



KFB CONTAINER FEATURES

- Closed handles for better part protection.
- Compatible with current 48 x 40" KFP6527 pallet and KFT6527 top caps.
- Ergonomic pocket handle design.
- Improved plastic bail design.
- Patented bail channel design.
- Textured label areas.
- Standard drain holes.
- Full internal height clearance.
- Cardholder available: KFB8038MCH.
- Made of polypropylene.

Product#	Outside Dim. Top L x W x H (inches)	Outside Dim. Bottom L x W (inches)	Inside Dim. Top L x W (inches)	Inside Dim. Bottom L x W x H (inches)	Clearance Height (inches)	Weight (lbs)	Capacity (Cu Ft)	Return Ratio	FOB
KFB6215	23.6 x 19.7 x 8.4	21.8 x 18.4	21.7 x 18.4	20.5 x 17.0	7.70	5.50	1.60	3.7:1	Charlotte
KFB6295	23.6 x 19.0 x 11.6	20.7 x 17.3	20.7 x 17.3	20.5 x 17.0	10.80	7.10	2.30	3.7:1	Charlotte



FB All purpose Stack & Nest Containers

Made from polypropylene, these durable European containers offer dimensions in three footprints. The FB container is ideal for automation and use on conveyors or for assembly. Choose from four standard colors that work great for process protocols.

Nesting feature allows for easy storage and freight savings when shipping empty.



FB CONTAINER FEATURES

- Made of polypropylene, FDA approved.
- Reinforced rim provides extra strength and stacking capacity.
- Oil and grease resistant, and impervious to most chemicals.
- Available in green, blue, yellow and red.
- Lids and labels, for easy part identification, are available.

Product#	Outside Dim. Top L x W x H (inches / mm)	Outside Dim. Bottom L x W x H (inches / mm)	Inside Dim. Top L x W x H (inches / mm)	Inside Dim. Bottom L x W x H (inches / mm)	Weight (lbs / kg)	Capacity (Cu Ft / Litres)	Recommended Load (lbs / kg)	Stock	FOB
FB530	21.3 x 12.6 x 6.7 / 540 x 320 x 170	17.0 x 10.3 x 6.7 / 431 x 262 x 170	16.5 x 10.8 x 6.6 / 420 x 275 x 167	16.7 x 10.0 x 6.6 / 425 x 255 x 167	2.90 / 1,30	0.60 / 17,00	44 / 20	Blue	Charlotte
FB601	23.0 x 14.8 x 7.9 / 585 x 375 x 200	18.2 x 12.2 x 7.9 / 463 x 310 x 200	19.3 x 13.0 x 7.7 / 490 x 330 x 196	16.5 x 11.8 x 7.7 / 420 x 300 x 196	3.10 / 1,40	1.10 / 30,00	44 / 20	Blue, Yellow, Red, Green	Charlotte
FB600	23.6 x 15.7 x 9.8 / 600 x 400 x 250	20.0 x 13.1 x 9.8 / 509 x 333 x 250	21.7 x 14.2 x 9.7 / 550 x 360 x 247	19.7 x 12.8 x 9.7 / 500 x 325 x 247	4.90 / 2,20	1.40 / 40,00	44 / 20	Blue, Yellow, Red, Green	Charlotte
FB603	23.5 x 15.6 x 11.8 / 597 x 397 x 300	21.3 x 13.4 x 11.8 / 542 x 340 x 300	22.2 x 14.3 x 11.7 / 565 x 364 x 297	20.9 x 13.1 x 11.7 / 530 x 334 x 297	4.90 / 2,20	2.00 / 57,00	44 / 20	Blue	Charlotte
FB604	23.6 x 15.7 x 13.8 / 600 x 400 x 350	20.9 x 12.8 x 13.8 / 530 x 325 x 350	19.8 x 13.9 x 13.7 / 502 x 354 x 347	18.7 x 12.5 x 13.7 / 475 x 317 x 347	7.10 / 3,20	2.20 / 62,00	44 / 20	Blue	Charlotte

For the latest in product sizes and options, visit ssitote.com/products.



KS Light, efficiently nest when empty to minimize freight and storage costs.

SSI SCHAEFER offers a general all-purpose nesting container that provides safe storing, easy labeling, as well as an economic return.



KS CONTAINER FEATURES

- Two sizes available.
- Made of polypropylene.
- Standard blue color.
- For KS17, dividers are available for quartering or halving.
- General purpose 180° stack and nest container.
- Large label areas on sides.

Product#	Outside Dim. Top L x W x H (inches / mm)	Outside Dim. Bottom L x W x H (inches / mm)	Inside Dim. Top L x W x H (inches / mm)	Inside Dim. Bottom L x W x H (inches / mm)	Weight (lbs / kg)	Capacity (Cu Ft / Litres)	Recommended Load (lbs / kg)	Available Colors	FOB
KS10	28.4 x 16.6 x 9.9 /	25.9 x 13.9 x 9.9 /	24.8 x 14.5 x 9.1 /	24.0 x 13.6 x 9.1 /	5.60 /	1.94 /	44 /	Blue	Charlotte
	721 x 422 x 26	658 x 353 x 252	630 x 368 x 231	610 x 345 x 231	2,50	55,00	20		
KS17	14.3 x 10.4 x 7.5 /	11.7 x 8.4 x 7.5 /	12.6 x 9.6 x 7.3 /	11.4 x 8.3 x 7.3 /	2.20 /	0.38 /	17 /	Blue	Charlotte
	363 x 264 x 191	297 x 213 x 191	320 x 244 x 185	290 x 211 x 185	1,00	10,50	7,7		

Max Stack Load: KS10-264 lbs and KS17 is 176 lbs.



LF Hopper, easily find or pick parts even when stacked

One of the most popular containers on the market, designed for the storage of high-density small parts. Made with injection molded heavy-duty FDA approved polypropylene, stackable bins resist oil, grease and are unaffected by most chemicals for long term performance.

Ergonomically designed, recessed grip handle on back for easier manual handling.



LF CONTAINER FEATURES

- Made with injection molded heavy-duty FDA approved polypropylene
- Bins resist oil, grease and are unaffected by most chemicals
- Double-wall construction for long term performance
- Recessed grip handle on back for easier manual handling
- Available in popular colors blue, yellow, green and red

Product#	Description	Outside Dim. L x W x H (inches / mm)	Weight (lbs / Kg)	Capacity (Cu Ft / Liters)	Available Colors	FOB
LF040402	LF110	3.8 x 4.0 x 2.0 / 97 x 102 x 51	0.10 / 0,05	0.01 / 0,28	Blue	Charlotte
LF060402	LF210	6.7 x 4.2 x 2.0 / 170 x 107 x 51	0.20 / 0,09	0.02 / 0,57	Blue	Charlotte
LF060503	LF211	6.5 x 4.3 x 3.0 / 165 x 109 x 76	0.20 / 0,09	0.03 / 0,85	Blue, Red, Green and Yellow	Charlotte
LF090605	LF221	9.2 x 5.9 x 4.8 / 234 x 145 x 122	0.60 / 0,27	0.10 / 2,83	Blue, Red, Green and Yellow	Charlotte
LF140806	LF321	13.6 x 8.3 x 5.8 / 345 x 211 x 147	1.40 / 0,64	0.26 / 7,36	Blue, Red, Green and Yellow	Charlotte
LF140808	LF322	13.6 x 8.3 x 7.9 / 345 x 211 x 200	1.80 / 0,82	0.37 / 10,48	Blue	Charlotte
LF141906	LF351	14.2 x 19.1 x 5.8 / 361 x 485 x 147	2.30 / 1,04	0.60 / 16,99	Blue	Charlotte
LF200606	LF511	19.7 x 6.2 x 5.8 / 500 x 158 x 147	1.80 / 0,82	0.27 / 7,65	Blue	Charlotte
LF201206	LF531	20.1 x 12.5 x 5.8 / 511 x 318 x 147	2.60 / 1,18	0.57 / 16,14	Blue	Charlotte
LF201208	LF532	19.7 x 12.3 x 7.9 / 500 x 312 x 201	3.30 / 1,50	0.83 / 23,50	Blue, Red, Green and Yellow	Charlotte
LF201212	LF533	19.7 x 12.3 x 11.9 / 500 x 312 x 302	4.20 / 1,91	1.34 / 37,94	Blue,	Charlotte
LF201812	LF543	19.7 x 18.4 x 11.9 / 500 x 467 x 302	5.90 / 2,68	2.01 / 56,92	Blue	Charlotte
LF291812	LF743	28.2 x 18.6 x 11.9 / 716 x 472 x 302	9.40 / 4,26	2.61 / 73,91	Blue	Charlotte





Customization options

Custom Options For Your Supply Chain

Whether you need branded containers, better identification, or shipment security, SSI SCHAEFER provides options to customize containers and packaging products. By choosing these options, you can add extra safety measures and visual

cues that assist with organizing goods for assembly, storage, and transport within your process, warehouse, or distribution center. Custom options allow for even more efficiency, while ensuring you meet safety requirements and best practices.



Shipping Labels

In order to streamline automated systems and to assist with scanning machines, add custom labels to containers. Labeling allows easy identification for employees and reduces material handling errors. Available in standard sizes of 2 x 3", 1 x 6.25", and 1 x 3". Other sizes are available upon request.



Label Placards

In order to help maintain the usable surface on containers, the label placard is designed to apply firmly with a permanent adhesive backing and a smooth surface for easy removal and application of your label. Shown here with a standard 4.5 x 6.5" size. Other sizes are available upon request.



Textured Label Area

Textured label areas eliminate the need for adding exterior placards resulting in less material and contaminates in recycling.



Cardholder Clips

Easy to use and reuse clips to snugly place identification cards.



Colors

While SSI SCHAEFER containers are produced in standard colors, other options are available dependent upon meeting minimum order quantity qualifications.

Charcoal

Green

Grey

Blue



Handles

48x15" containers have open or closed handles available.



ID Tags

For uniform branding, plastic identification plates adhere to your containers. Designed for durability, these plates have long lasting service life and adhere to a variety of locations. Standard tag size is 5 x 3". Other sizes are available upon request.



Hot Stamps

For a permanent identification, a hot stamp is heat transferred onto containers. You can customize each hot stamp to meet your specifications—allowing for easy visual inventory management.



Snap-in Cardholders

Use snap-in card holders to identify the contents of all types of returnable/reusable containers. Holds card sizes up to 4 x 6.5.



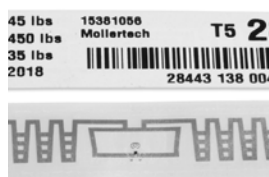
Adhesive Cardholders

Adhesive cardholders fit firmly on containers and protect shipping labels, instructions, inventory data, or other important information. Holds up to a 4 x 6.5" card. Other sizes are available upon request.



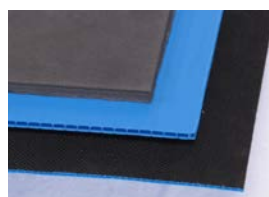
Lids

AF12150L and AF24150L
NF1215DC and NF2415DC
NF242200LH - attached lid option
Custom fabric lids designed for your application.



RFID Label

Barcode / RFID combination ensures traceable products for asset management.



Dunnage Layer Pads

Standard layer pads available in corrugated plastic and foam.

"In the ten plus years that I have been dealing with SSI SCHAEFER, they have been very helpful in the design and production of many containers that Aisin Warner North Carolina use on a daily bases. The turnkey jobs SSI SCHAEFER has done for us have been very competitive, and I can always call our SSI SCHAEFER representative and have a packaging quote within a short turnaround."

Joey Pleasants,
AW North Carolina, Packaging and
Logistics Production Control



ESD Divider Sets



ESD Custom Fit Dunnage



ESD Foam Dunnage

ELECTROSTATIC DISSIPATIVE (ESD) CONTAINERS AND DUNNAGE

Guarding against static shock requires the use of an ESD material such as conductive, anti-static, or static dissipative plastics and foam to minimize risk.

Electrostatic dissipative shock can destroy sensitive electronic components, erase or alter magnetic media, and even cause explosions. Materials with ideal ESD protection require 10^6 ohms/square to 10^9 ohms/square. Anything outside of this range still leaves electronic components unprotected.

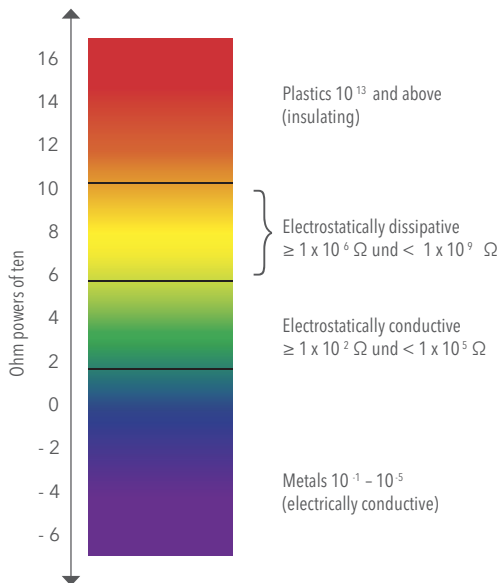
Every SSI SCHAEFER ESD product falls within the recommended range guidelines and is suitable for a wide range of electrical components.

Protect Your Electronics Wisely

With electrostatic dissipative (ESD) products from SSI SCHAEFER, the charge flows to a ground position in a slow and controlled manner. Dissipative materials have a surface resistance equal to 10^6 ohms/square but less than 10^9 ohms/square. The risk of electrostatic charges are extremely low, and ESD containers prevent discharge from human contact.

FEATURES

- Static dissipative solution protects product from electrostatic discharge.
- Permanent ESD protection with infinite shelf life for the container and its contents.
- Available in both AIAG and European standard footprints.
- Can be combined with ESD foam or divider sets to further reduce damage caused by mishandling.
- Lid options offer further protection from moisture and dust.
- Perfect for clean rooms and other controlled environments.



Ohms / Sq.	Material	Description
$>10^{13}$	Insulative	Insulators and base polymers. These materials are not protective against static electricity.
10^{10} to 10^{12}	Anti-Static	Initial charges are suppressed, but may only be surface resistant.
10^6 to 10^9	Dissipative	No or low initial charge. Prevents discharge to or from human contact.
10^3 to 10^5	Conductive	No initial charge, but still provides an easy path for bleed off to another object.
1 to 10^3	Shielding Composites	Employs nickel coated carbon fibers to omit EMI only in specific products.
10^{-3} to 1	Carbons	Carbon powder and fiber.
$< 10^{-3}$	Metals	Stainless steel, bronze, and copper.





FIND THE RIGHT PROTECTION

The SSI SCHAEFER team of experts works with you to design products to meet your exact needs. Our engineers and designers provide decades of experience developing products for diverse industries including automotive, automation, electronics, and logistics.

From custom totes and pallets to part specific dunnage, SSI SCHAEFER designs a custom solution to protect your products and strengthen your supply chain performance.

SSI SCHAEFER offers superior part protection through custom designed interior packaging and dunnage. Our engineers design efficient, cost-effective protective packaging to cradle parts through all stages of assembly, work in process and transportation.

Utilizing materials such as plastic corrugated with protective laminates, polyethylene and cross-linked foams, high-density polyethylene and vacuum thermoformed trays,

SSI SCHAEFER meets specific handling requirements by creating a custom dunnage design. Whether you require shock or vibration protection, part separation, specific orientation for class "A" parts or electrostatic discharge protection, SSI SCHAEFER will meet your needs. We offer turn-key help and support.

For a complete listing of SSI SCHAEFER products, visit ssitote.com/products.



CUSTOM FIT FOR YOUR PRECISION PARTS

With SSI SCHAEFER, our expert packaging engineers work with you to design a specific product to meet your needs. Our engineers and designers have decades of experience designing products for various industries—including aerospace, appliance, automotive, electronics, and even retail.

Mark Ward
SSI SCHAEFER Dunnage Packaging Expert



CUT & WELD

Due to unique sizes and shapes, some products require special container sizes. These products are either too large or too small to be shipped in standard containers. To address this, SSI SCHAEFER cuts standard containers to specific lengths, widths, or heights and hand welds components to create a custom container that fits your exact requirements.

SCHAEFGUARD™ Dunnage

SSI SCHAEFER offers one of the largest selection of Dunnage material on the market. Utilizing an ever-growing list of protective materials and fabrication principles, SCHAEFGUARD™, by SSI SCHAEFER, protects products from impact, abrasion, vibration, moisture, corrosion, and electrostatic discharge (ESD).

SIDE LOAD UNITS

Resourceful innovation is the principle behind SSI SCHAEFER side-load bulk container. SSI SCHAEFER side-load bulk containers are reinforced with a steel frame to ensure durability and extend life in harsh conditions. The interior of each side-load bulk container is made custom with a vast number of protective Dunnage materials and designs.

GLIDERPAC™

Ergonomic, efficient, and economical define the SSI SCHAEFER GliderPac container. Customized with protective Dunnage in multiple layers, our system is secured to the inside walls of standard bulk containers. The Dunnage glides along an integrated track feature that prevents binding but provides easy part accessibility. The design is user friendly and reduces unnecessary reaching and bending.



REASONS WHY YOU SHOULD CHOOSE SSI SCHAEFER:

- **Stability:**

As a financially independent family business, SSI SCHAEFER is committed to long-term solutions. You can trust that our team of experts will be there for you tomorrow and in years to come.

- **Efficiency:**

SSI SCHAEFER solutions are scalable and grow with your business. You can always add to your reusable packaging system to help meet your business needs.

- **Quality:**

As a leader in intralogistics, SSI SCHAEFER provides a single-source solution. As an original equipment manufacturer, SSI SCHAEFER guarantees quality and the right solution for your needs.

- **Sustainability:**

Reusable packaging from SSI SCHAEFER is 100% recyclable.

- **Know-how:**

SSI SCHAEFER is always on the cutting edge of reusable packaging trends within the market. Our team of experts can answer any question you have regarding reusable packaging.

- **Global Network:**

As an international company, SSI SCHAEFER has local offices worldwide. Our manufacturing facilities are located throughout North America in both the U.S.A and Mexico. With over 70 office locations, our team of experts speak your language.

ssitote.com

+1.888.SSI.TOTE
packaginghelp@ssi-schaefer.com
©2018 SSI SCHAEFER. Release _2.0_7/18-EN



SSI SCHAEFER