

“Global Leadership in electronics”

**Comercial, Automotive, Agriculture
& Medical Industries**



Welcome!



CS Manufacturing & Industrial Services Inc Welcome to solutions!



USA OFFICES SALES & MARKETING : 619 Paulin Avenue Suite 105, Calexico California USA

CONTACT US: csamaniego@csmanufacture.com , info@csmanufacture.com
Sales-Quotations@csmanufacture.com

USA (760)-890-7746 & (760)-996-7281

www.csmanufacture.com



CS Manufacture and Industrial Services SA de CV Welcome to solutions!



MEXICO MANUFACTURING PLANT: Circuito de Las Misiones Oeste #180, Mexicali BC Mexico C.P. 21394

CONTACT US: csamaniego@csmanufacture.com , info@csmanufacture.com
Sales-Quotations@csmanufacture.com

MEXICO: 52-(686)565-84-44 & 52-(686)592-14-45

www.csmanufacture.com



Global Presence

MÉXICO PLANTS

- Mexicali BC México.

USA PLANTS

- Calexico, California USA, main Offices.

ELECTRONICS-INDUSTRIAL

- Crossing Calexico Border
- 2 International Border Crossing to USA
- Two and half hours From Tijuana B.C./car
- Two hours from San Diego CA./car
- Four hours from Phoenix, AZ/car
- Three and half hours from Los Angeles CA./car

PARTNERSHIP: **MÉXICO, USA, CHINA.**





CSM MEXICALI BC, MEXICO'S PLANT

CSM Building Size : 50,000 SQF

CSM used Space: 15,000 SQF

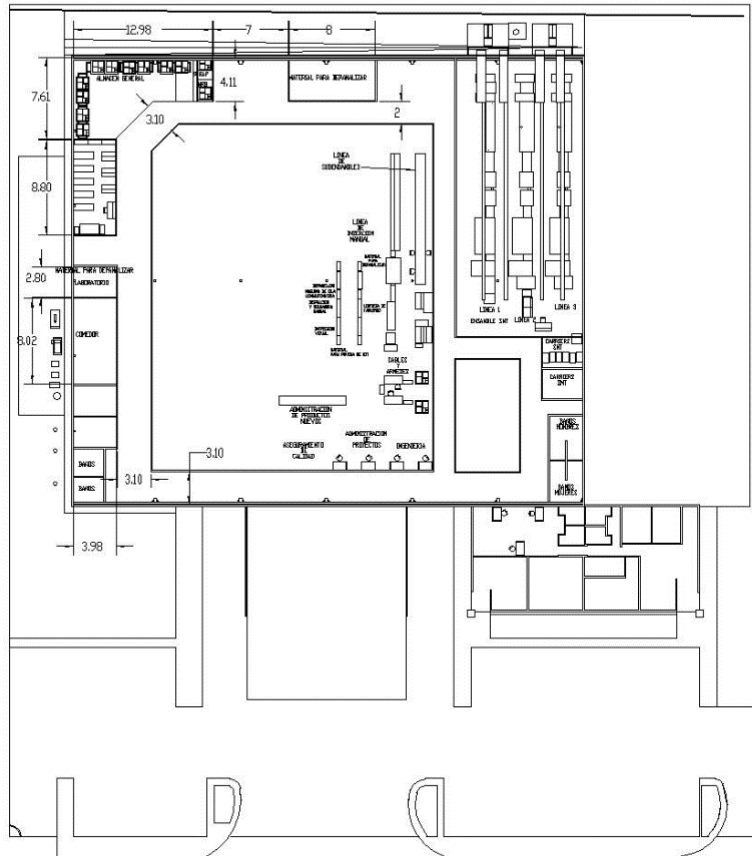
Available space: 35,000 SQF

Working Personnel: Average 70 people

Capacity Personel per shift: 500 +

CSM Sales 6 Mi.







OUR FACILITIES





OUR FACILITIES





CSMIS

- **Manufacture & Assembly Plant – Mexicali, México.**
- **Sales: Mexico & USA**
- **Distribution Warehouse: Calexico CA, USA.**

CSM Network Companies

- **PCB Bare Board Fabrication-Shenzhen China, Hong Kong**
- **Stamping company-Shenzhen China**
- **Plastic Mould Design-Shenzhen China**
- **Injection Molding Process-Mexico**



Our History

- 2001: Start operation in Mexicali under UEM
- 2006: Born **CS Manufacture and Industrial Services SA de CV.**
- 2008: Born **CS Manufacturing & Industrial Services Inc.** Privately owned.
- 2010: Starts project for Certification in ISO/TS 16949 in 2011
- 2011: CSM obtain the ISO9000 and TS16949 certifications
- 2015: Start Injection Molding Planing for Transfer from China to Mexico
- 2017: Start Injection Molding Process in Mexicali Plant
- 2017: CSM Get the IATF16949 Certification
- **We Did it !!! , Thanks to our CSM team.**



Vision and Mission

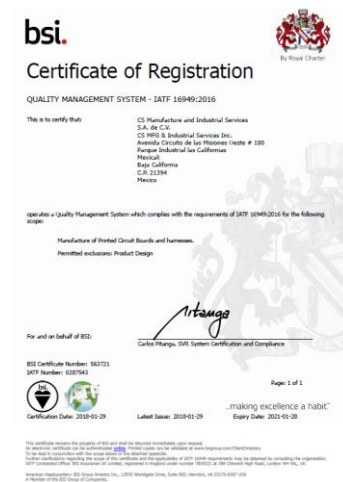
VISION: Be recognized as a world class company, totally integrated contract manufacturer for electronics, Plastics, Industrial and mechatronics products satisfying any commitment to our customers, following globalization sourcing of skills and technologic advances.

MISSION: Dedicated to be the supplier of choice in our field of activity, by meeting the ever changing requirements of our customers. Is committed to provide a conducive work environment, where entrepreneurship, personal initiative and team work are stimulated.



Our Quality System

IATF16949 Certified



“Our Quality System”

***Control Plan**

***PFMEA**

***PPAP**

***IMDS**

***MSA**

***SPC**

***PSW**

All requirements needed for Automotive & Commercial products.



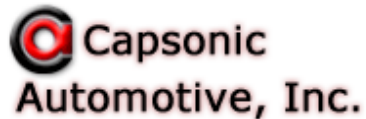
Values

- **Value our People**
- **Value our Customer Success**
- **Value Committed to Quality**
- **Value innovation of our Values**





Customers





FULL TURNKEY & ASSEMBLY CAPABILITIES



PCB ASSEMBLIES



ELECTRONICS



PLASTICS



STAMPING SURFACE FINISH

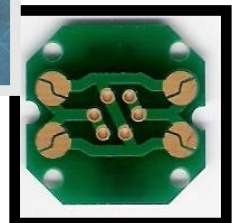
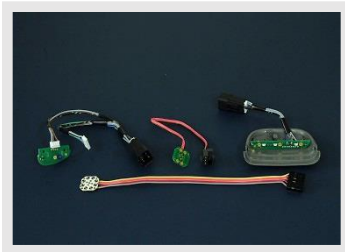
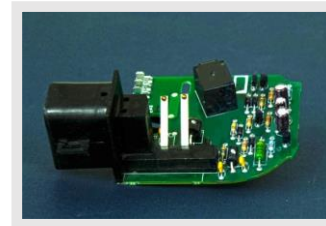
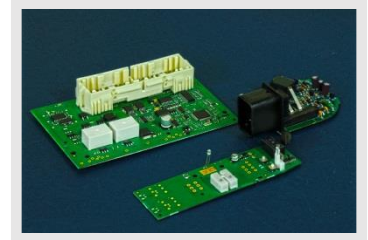




ASSEMBLIES

Mechanical, Electric, Cables. Harnesses, Pcb.

- Pcb Fabrication for Automotive and Comercial Markets
- Materials Procurement for our customerss products
- ECU Automotive PCBs
- Wiper Systems Assemblies
- Harness Assembly for Automotive
- Mechanic-Electromechanic Assemblies for Automotive
- Stamping for Wiper Motor case
- Injection Molding Process for Wiper Systems
- Chemical treatment-Anodized,Chrome etc.

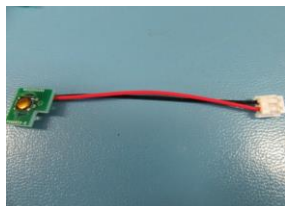
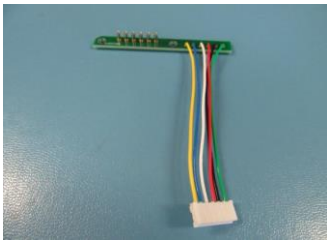




Electronics Assemblies

Medical PCB, Cables & Harness. Agriculture, Mechanic

- Pcb Fabrication for Medical Devices
- Materials Procurement for our customers products
- Medical PCBs
- Medical Systems Assemblies
- Harness Assembly for Medical Devices
- Mechanic-Electromechanic Assemblies for Medical Devices
- Stamping for Medical Assemblies
- Injection Molding Process for Medical Systems
- Chemical treatment-Anodized,Chrome etc.





Electronics Capabilities

EQUIPMENT

- **EQUIPMENT FOR ELECTRONICS**
- **QTY(3) Screen Printers**
- **QTY(3) SPI**
- **QTY(3) Chip shooter Fuji CP6**
- **QTY(2) Chip Shooter Fuji NXT-III**
- **QTY(1) Universal Chipshooter GC-60D**
- **QTY(4) Fine Pitch and Shooter Juki740**
- **QTY(3) Reflow Heller 1800, BTU, Conceptronics etc.**
- **QTY(3) AOI Vision Inspection**
- **PCBs Rework stations**





MEXICALI EQUIPMENT

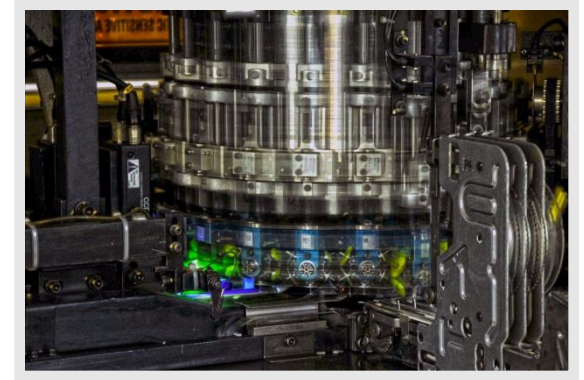
- WAVE PROCESS LINES
- ICT TEST EQUIPMENT
- INJECTION MOLDING LINES





MEXICALI ASSEMBLIES LINES AND PCB ASSY EQUIPMENT

- SMT PROCESS LINES
- WAVE SOLDER PROCESS LINES
- GENERAL ASSEMBLIES LINES





PLASTICS PROCESS IN MEXICO

- **Molding Process**
- Engineering changes
 - Automotive
 - Electronics
 - Consumer products
 - Medical Devices
 - Medical Sensors
 - Basic Mould & Overmould

MACHINES

- QTY-2 of 140 Tons
- QTY-1 of 230 Ton



CURRENT BASIC MOULD PARTS

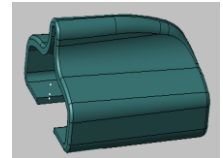
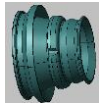


FUTURE OVERMOULD PARTS





General Assemblies



STAMPING, ANODIZED & CASTING





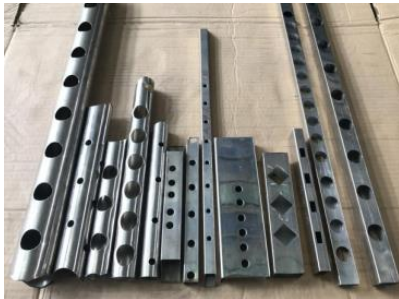
AGRICULTURE AND INDUSTRIAL PROCESS

- **Steel Pipes**
- Engineering changes
 - Racks
 - Fence

MACHINES

- Laser Cutting
- Hidraulic Punshing

Current Punshing pipes



Angles and squared Pipes





THERMOFORMING PROCESS

■ Thermoforming Process

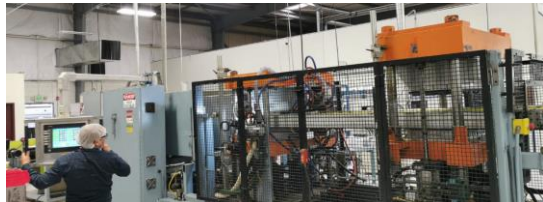
■ Engineering changes

- ☐ Automotive
- ☐ Electronics
- ☐ Consumer products
- ☐ Food

MACHINES

- QTY-1 30"x36"
- QTY-1 24x36"

Current Thermoforming parts



Current Forming Moulds



Current Punching Dies





Metrics “Weekly Scorecard”

A minimum of 3 metrics in each of the following four areas are measured and discussed weekly with the Plant Manager with appropriate corrective actions.

- **Customer Service**
- **Quality**
- **Inventory Management**
- **Labor and Material Management**





ERP Inventory Management

Inventory Multi warehouse systems with ERP

1-Return Merchandise Authorization function

2-Hierarchical groups for products

3-Import and export functions for QuickBooks

4-PDF and XML files

5-Multi-currencies and expiration dates features.

6- RMA Reports

7.- Work orders Generation

8.-Inventory Adjustment

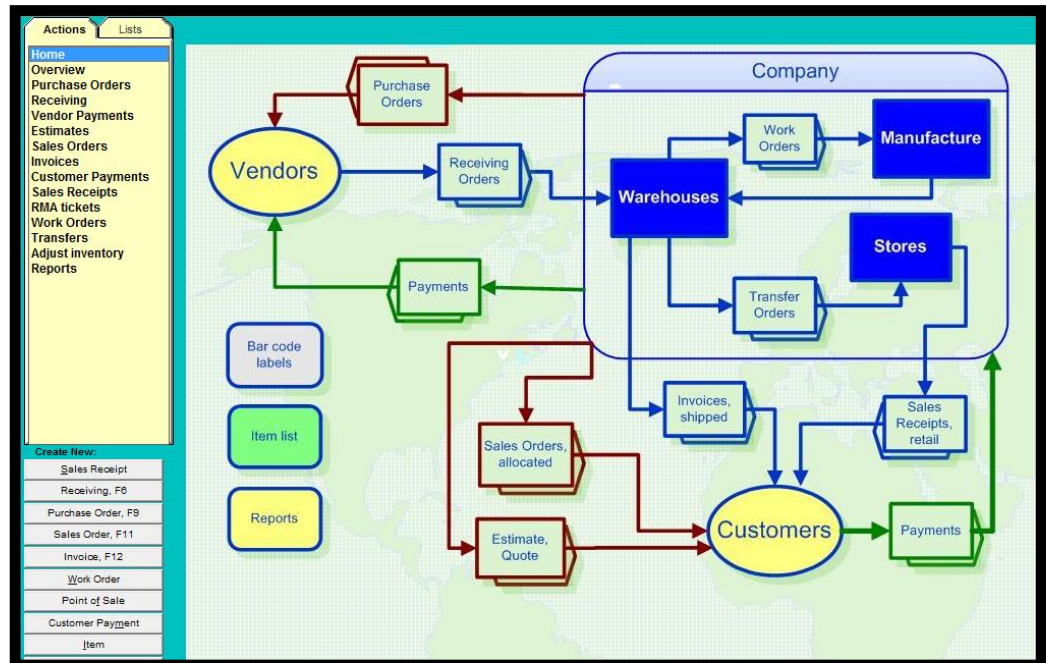
9-Invoice and PO Generation

10-Vendor payments

11-Estimates

12-Reports

13- Much More





Accomplishments

- **ISO 14000 Working Enviroment**
- **New ERP Jo Boss Implementation**
- **SPC Live Monitoring in each Critical Process**
- **QR Product Traceability**
- **RF and Automotive New Projects Introduction**
- **Medical, Automotive & Commercial Products Expanded**



Gracias!

고마워!

جراسياس

Thank You!

Merci!

謝謝!

Danke!

ありがとう!



Comercial, Automotive & Medical Industries