

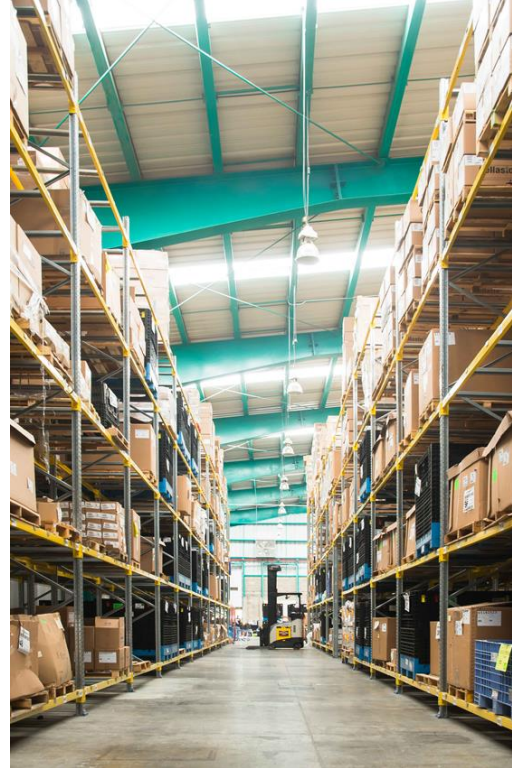
Seeräuber Automotive

An extension of your operations



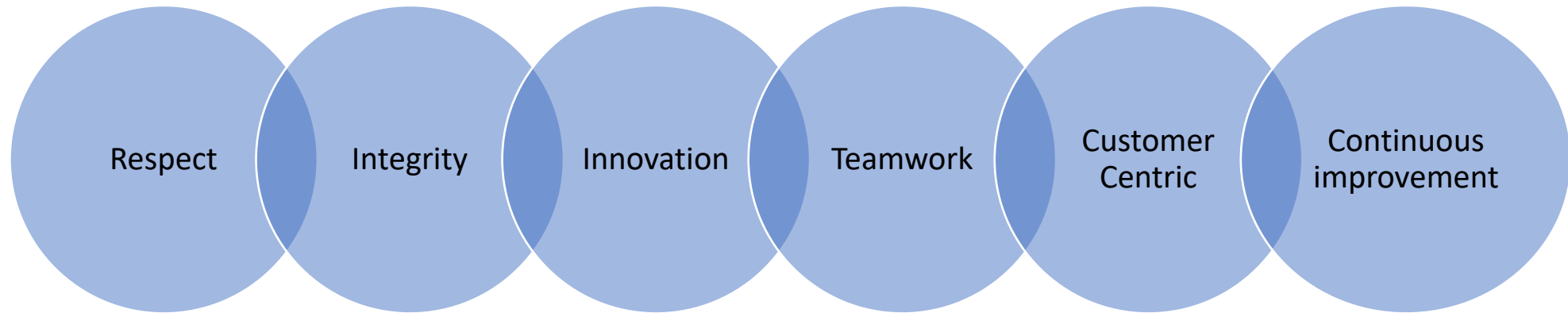
**Seeräuber
Automotive**

What We Do



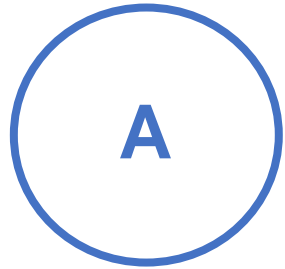
We are a Manufacturing and Supply Chain Management Services company, certified in IATF 16949:2016, ISO 9001:2015 and ISO 14001:2015, founded in 2014. We are focused on the Regulated Industry and located within the biggest industry cluster in the center of Mexico.

Our Mission Statement

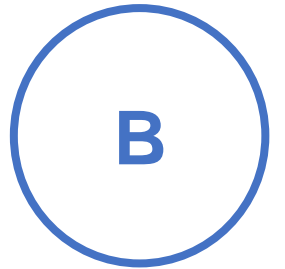


We provide high quality manufacturing, assembly and supply chain management services which meet or exceed the requirements of our customers in a positive work environment for our people allowing for their professional development. By doing so we contribute in a positive way to society and seek to maximize the benefits for our stockholders.

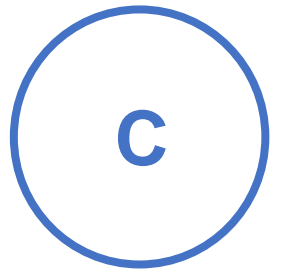
Our Value Proposition



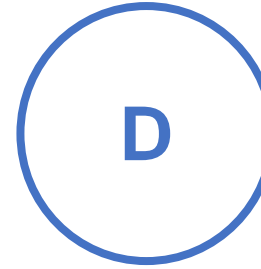
Concentrate on your core capabilities by outsourcing your assembly processes.



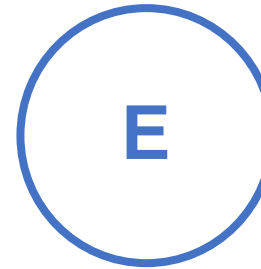
Free up your shop floor by manufacturing in an automotive grade quality certified company.



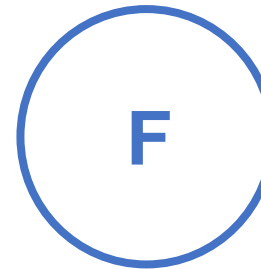
Optimize your manufacturing in a controlled environment (systems, process, quality)



Manage your product life cycle in the manufacturing area from NPI to EOL



Develop your local supply chain with a highly connected, certified contract manufacturer.



Deal with an American registered and owned company.

Senior Management Team

BOD Chairman

Ernesto Sánchez Proal

Previous experience:

- IBM (EA procurement Mgr)
- Jabil (General Director Mexico)
- Own Company (Design & Mfg)
- Government (Minister of Economic Dev.)

Strengths:

- New Business Development
- Execution Assurance
- Product Realization
- Process and Quality Management
- Business Strategic Planning
- Economic Development Strategy

Operations and Plant Manager

Miguel García

Previous experience:

- IBM (Reliability Mgr)
- Hitachi (Quality Mgr)
- Jabil (Quality Mgr)

Strengths:

- Lean Manufacturing
- Master black belt 6 sigma
- Quality Management
- Mechanical and Electronics assembly
- Product realization (design and manufacturing)

Finance Manager

Manuel Ríos Mena

Previous experience:

- KPMG (Assurance Services)
- SOLECTRON (Site Controller CUU site)
- CADU (Real Estate, publicly listed corp)

Strengths:

- Financial Strategy
- GAAP / SOX
- International Mfg. Ops Finance
- Tax/Fiscal Strategy
- TPS / Lean Mfg applied to Finance

Quality Management



- **IATF 16949** is a global Quality Management System Standard for the Automotive industry. IATF 16949:2016 incorporates the structure and requirements of the **ISO 9001:2015** quality management system standard with **additional** automotive customer-specific requirements. It was developed by the International Automotive Task Force (IATF), with support from AIAG.
- **IATF 16949:2016** is an independent QMS standard that is fully aligned with the structure and requirements of **ISO 9001:2015**. Therefore, the IATF 16949 cannot be implemented alone as a stand-alone document but must be implemented as a supplement and in conjunction with ISO 9001:2015.
- **Seeräuber Automotive** currently holds ISO 9001:2015, IATF 16949:2016 and ISO 14001:2015 certificates.



Certification Number: 74 700 1515.



Certification Number: 74 800 1860.



Certification Number: 01 111 1630161.

Certificate IATF Number: 0268467.



CMMISVC/2SM
Exp. 2023-02-27 / Appraisal #6017



International Automotive Task Force

Certificates



CMMISVC / 2SM
Exp. 2023-02-27 / Appraisal #6017



ISO9001 - 2015



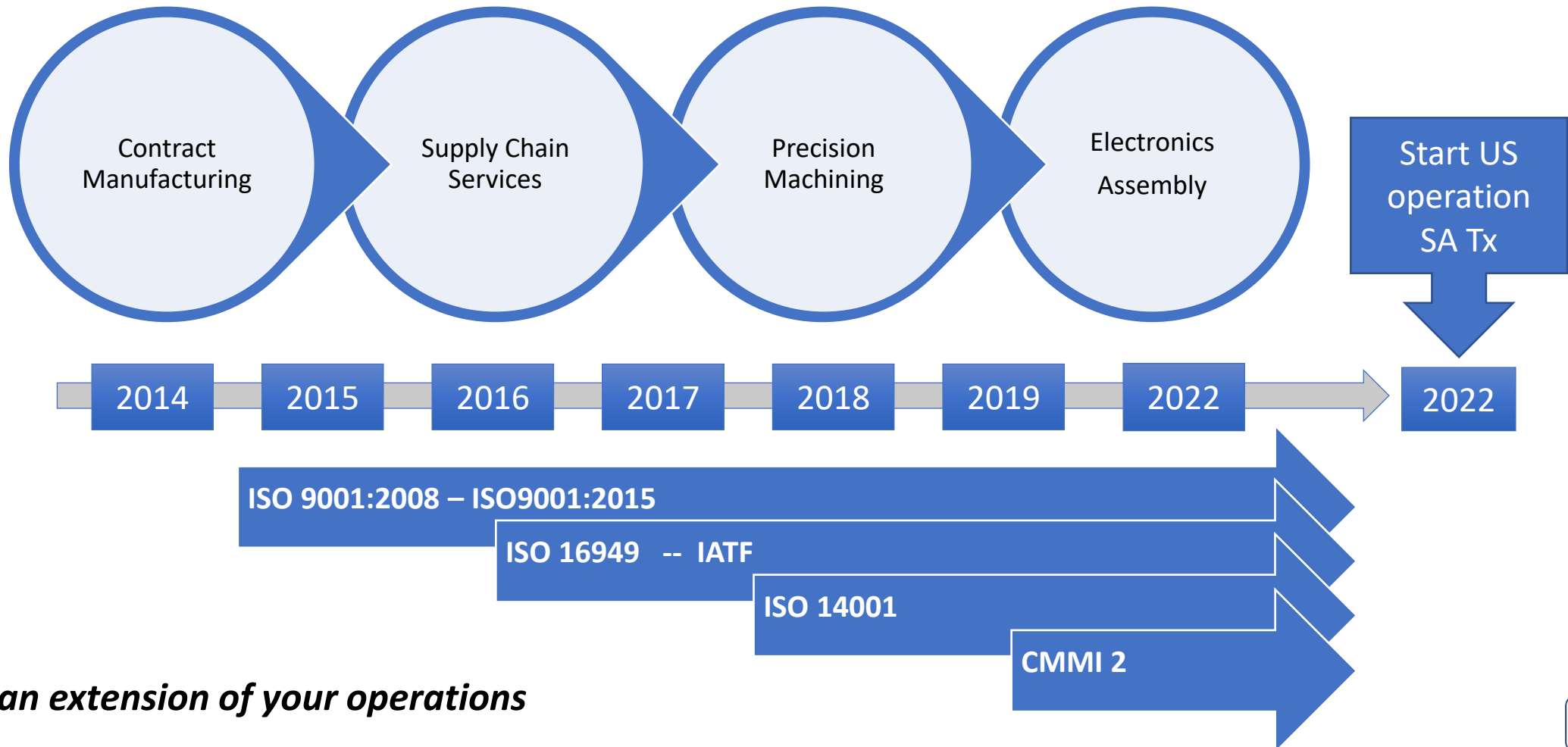
IATF 16949 - 2016



ISO 14001- 2015



Business Development Strategy



We are an extension of your operations

Business Development Strategy

Head Quarter
Marketing, logistics
and Finance

Seeräuber
Automotive LLC

FUTURE HC (Starting 2022)

Currently incorporated and starting operations for new customers

Contract manufacturing and supply chain management services for the corporation

Manufacturing,
Supply Chain and
Engineering services

Seeräuber
Automotive
Mexico

Manage resources for Mexico operations and **future engineering and technology services** .

Our Customers

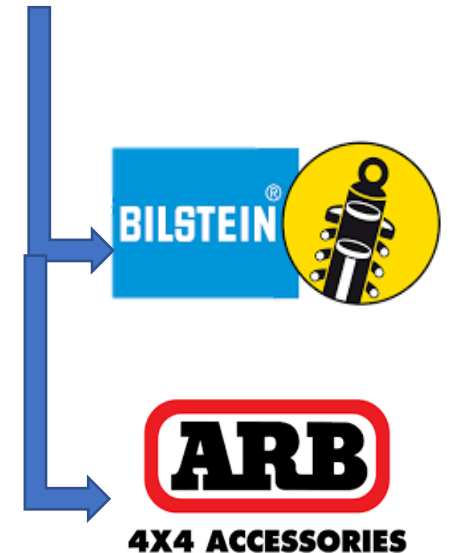
Xometry



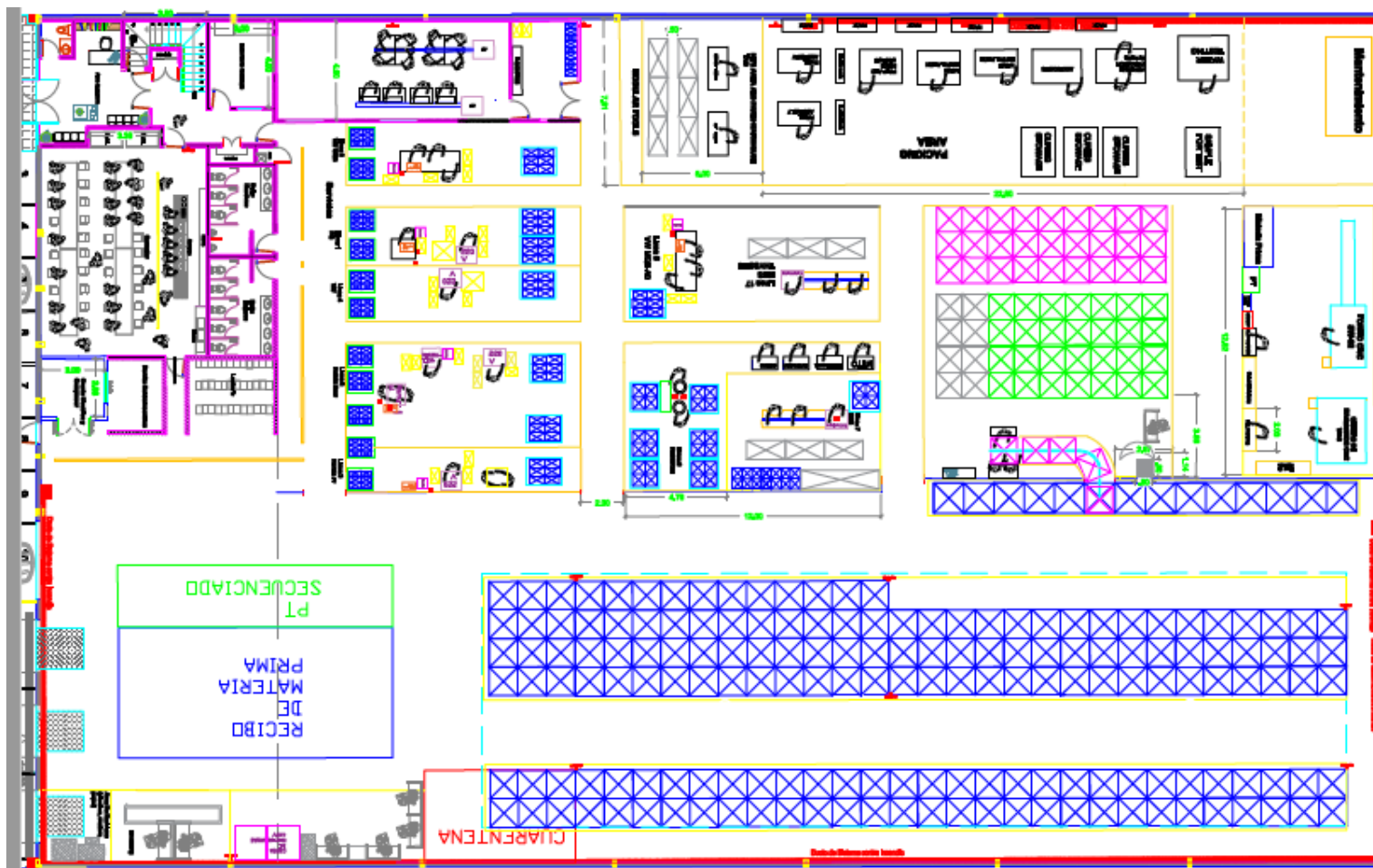
 thyssenkrupp

URREA

HUBS
A PROTO LABS COMPANY



Plant Layout



- ▶ Production 1600m2
- ▶ Warehouse 750m2
- ▶ Receiving 325m2
- ▶ Office 220m2
- ▶ Docks 3

Mechanical Assembly Capacity

Automotive-grade quality processes and systems
(IATF, ISO 9001)

Process development for mechanical and
electromechanical assembly

Flexibility to assemble and configure parts using
Lean Manufacturing



We are an extension of your operations

Precision Machining Capacity

SW32 SWISS HIGH PERFORMANCE

High precision revolution parts for any industry, such as bushings, shafts, bolts, guides among others

D. up to 32 mm.
L. up to 315 mm.
Tolerance up to 0.0002 in.



VF3 CNC MACHINING CENTER

Parts with non-cylindrical shapes such as bases, molds, pieces with irregular finishes, among others.

L. 1016 mm.
H. 508mm.
Tolerances up to 0.001 in



Electronics Assembly Capacity

State of the Art, Fully automated SMT assembly line.

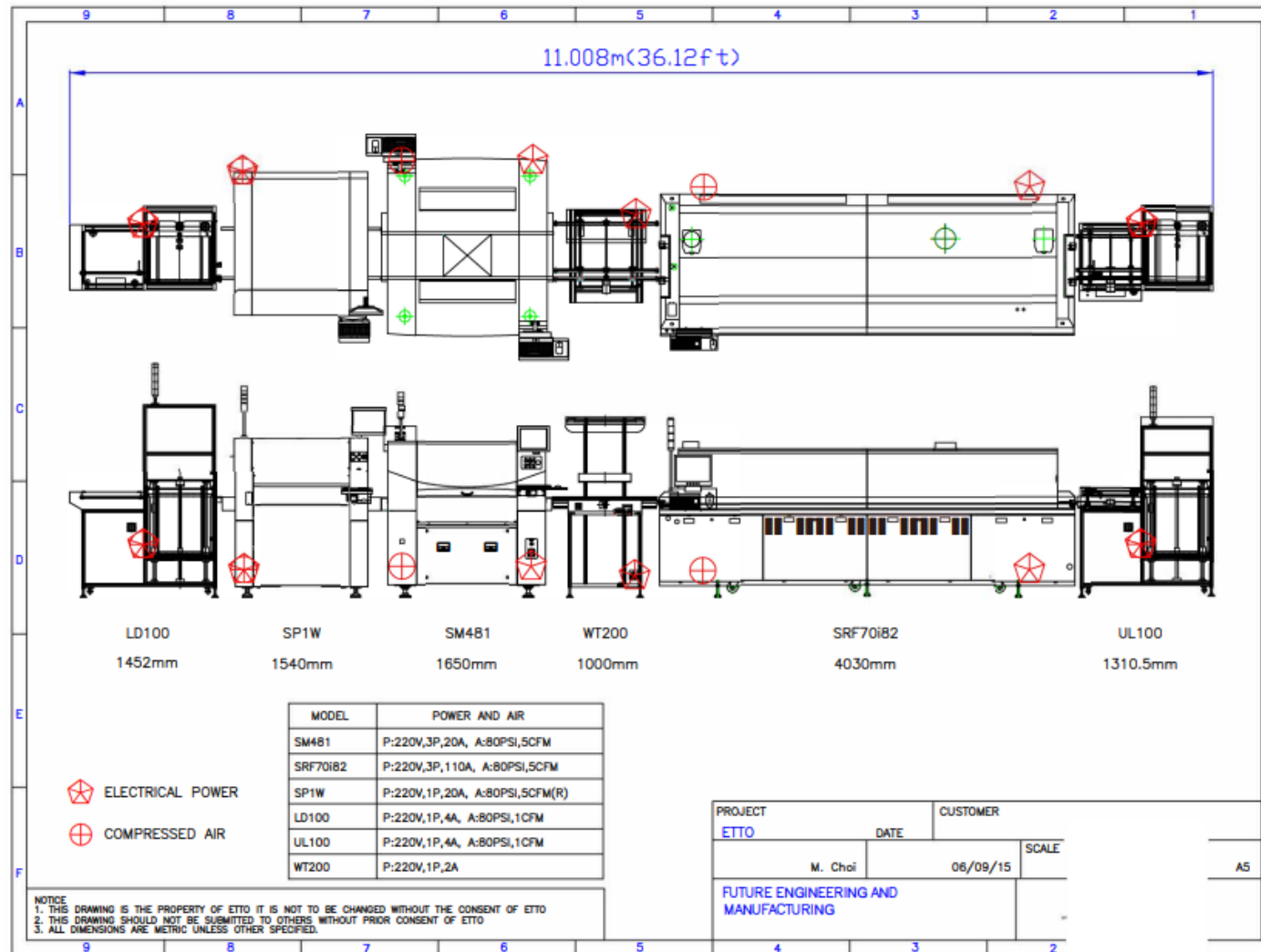
Printing Accuracy: $12.5\mu\text{m}@6\sigma$. Automatic Stencil Position Setting / Advanced Software Interface

Up to 40k CPH throughput, wide range of board sizes. Single/double lane capable.

Complete Board Handling Solution ensuring touch-free process.



Electronics Assembly Capacity

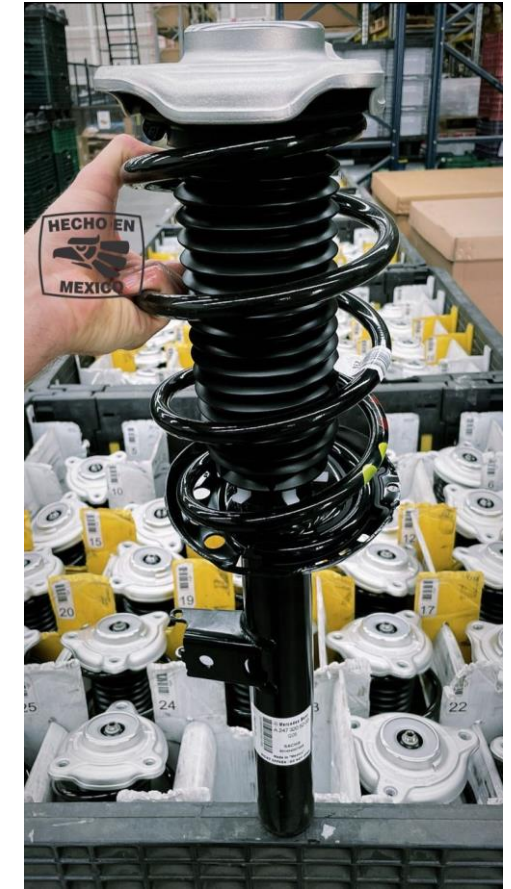


- Pick & Place: **SM481 Plus**. Performs high-speed placement of chips at 40,000CPH and QFPs at one per 1.1 seconds. Able to produce long boards with lengths of up to 1,500mm
- Samsung SM481 High Speed Flexible Chip Mounter
- Samsung SRF70i82 Reflow Oven
- PDT Tech NPS510 Screen Printer
- Samsung LD-300E Handling System
- Samsung UL-300E Unloader
- Samsung WT-200XLE Advanced Flexible Chip Mounter
- Ingersoll-Rand SSR-EP30SE Air Compressor

Examples of current products/services



► Modular Assembly



► Sequencing Service

Examples of current products/services



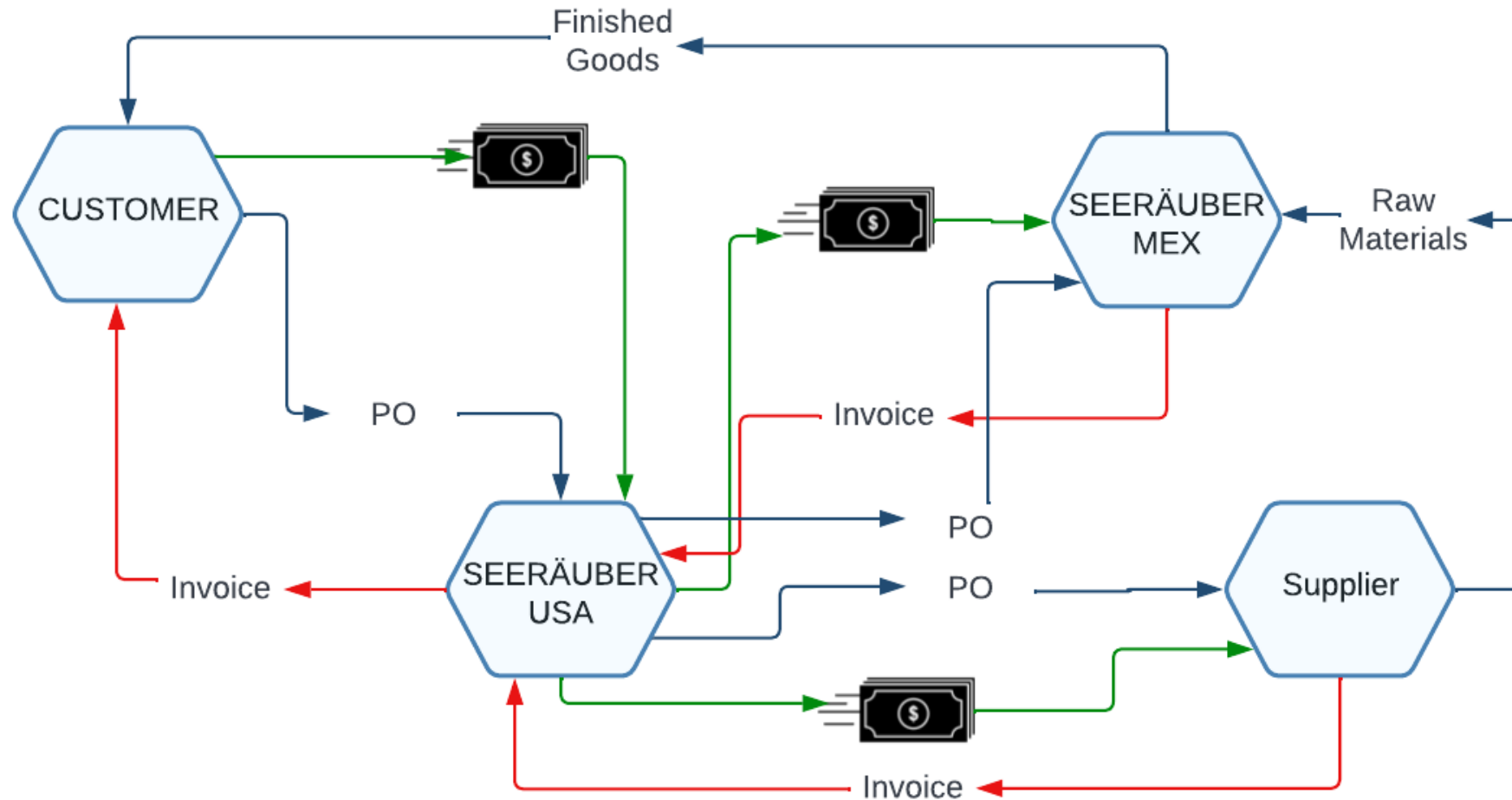
► Precision Machining

Supply Chain Management

- Customer interface: Supply-On (EDI and performance reporting)
- ERP: SAP B1
- IMMEX program (in process)
- Access controlled warehouse for parts and Finished goods
- Supplier Management, Component Acquisition, Logistics, Re-packaging / Kits, final assembly.
- Sequential delivery.
- Supply chain development.

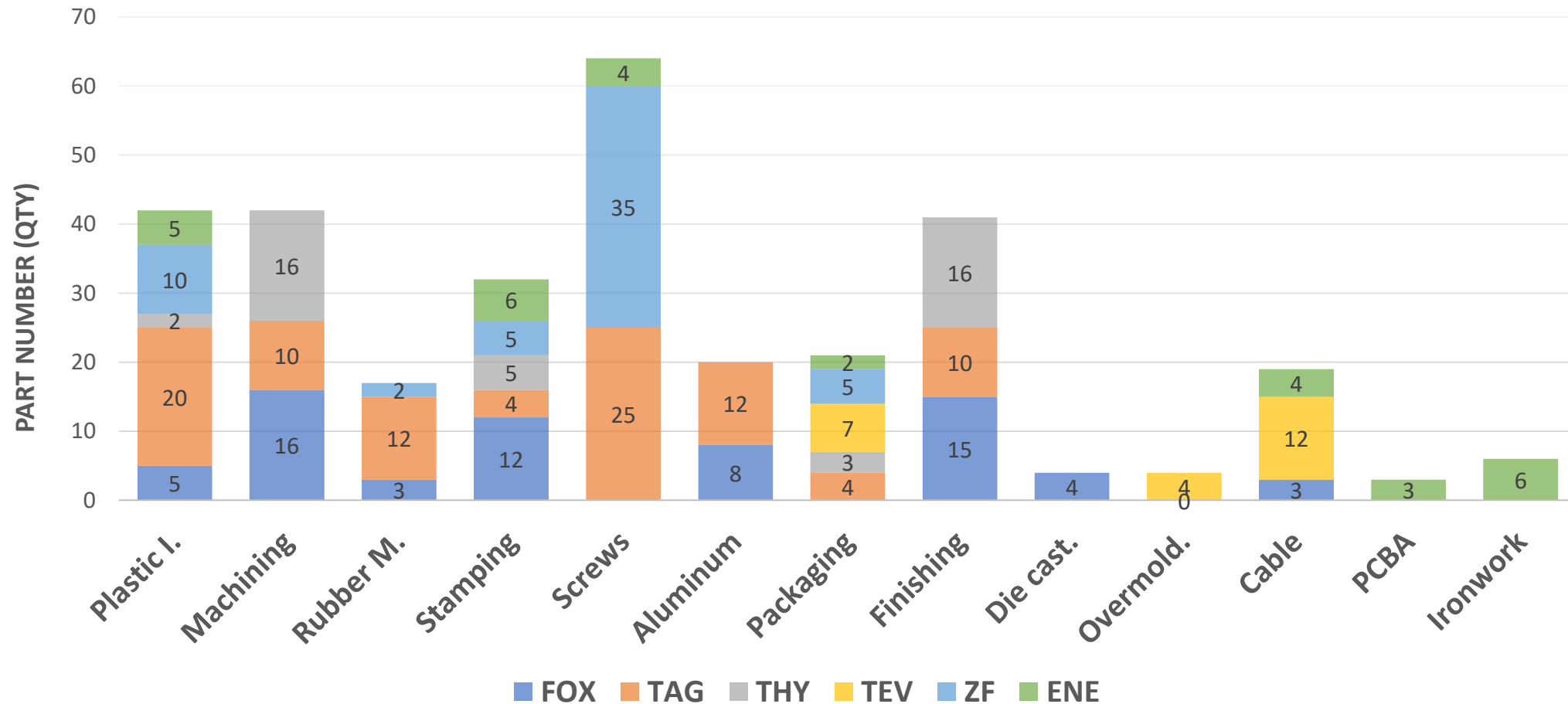


Export Scheme



Export scheme currently in use with selected customers.

Supply Chain Development



We are an extension of your operations

Supply Chain Reengineering

Product development and reengineering services

Purpose: ENABLE NEARSHORING

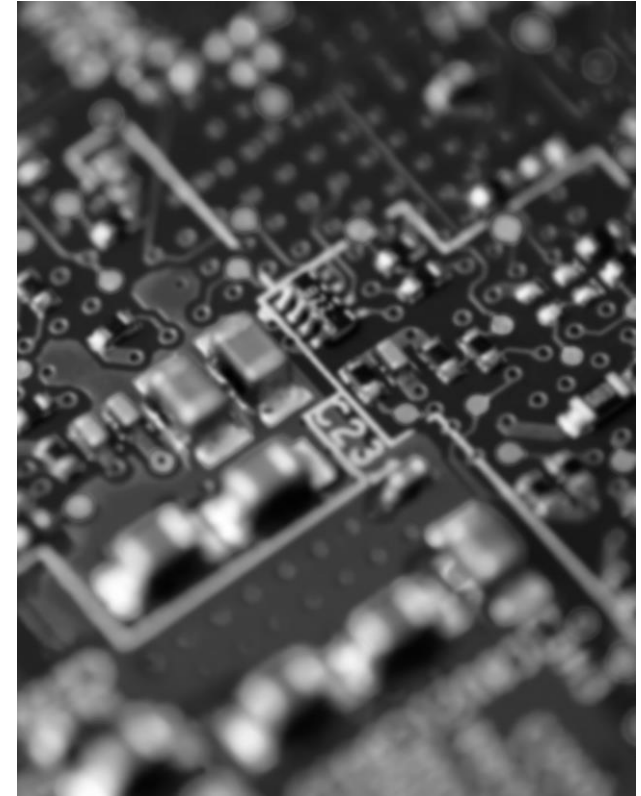
- Complement / create missing data
- Adapt design to North America's supply chain.

Design services scope:

Mechanical

Electronic and electrical

Software design



We are an extension of your operations

Thank you



**Seeräuber
Automotive**

www.seerauber.com