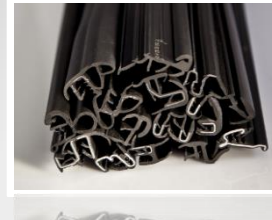




PLASTIC



DIE CASTING



RUBBER SEAL



STAMPING

AUTOMOTIVE SUBTRACTING PARTNER



1 GMD GROUP



2 STAMPING DIVISION



3 R&D : RMC



4 SLP MEXICO



- GMD has been created in 1986 with a cutting and stamping activity
- Shareholders are Mr Martineau with 66% and financial banks for the balance
- GMD sales is planned in 2016 to be 100 % Automotive Industry
- With a regular and stable growth, GMD Group is today a reliable partner, mastering 4 different activities



Turnover 2021

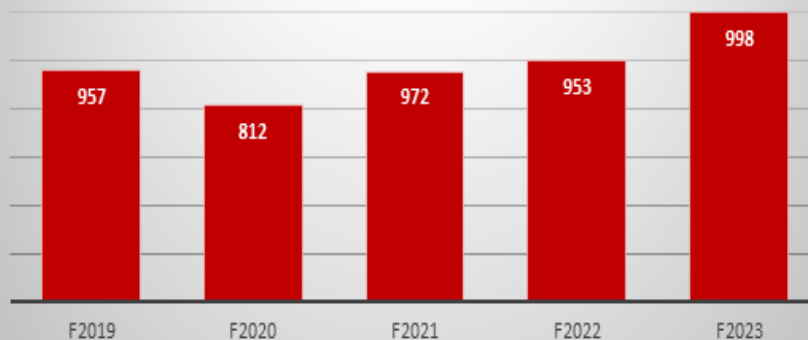
millions of euros

883**Workforce****6,178****Subsidiaries**

In the world

47

Prévision du Chiffre d'affaires GMD (M€)



A WORLDWIDE FOOTPRINT

**TO of GMD GROUP exceeded 950M€ in 2019**

The excellence of a French subcontracting group in
France and abroad

SUMMARY

1 GMD GROUP

2 STAMPING DIVISION

3 R&D : RMC

4 SLP MEXICO



Turnover 2021

millions of euros

160

Workforce

1,415

Subsidiaries

In the world

10



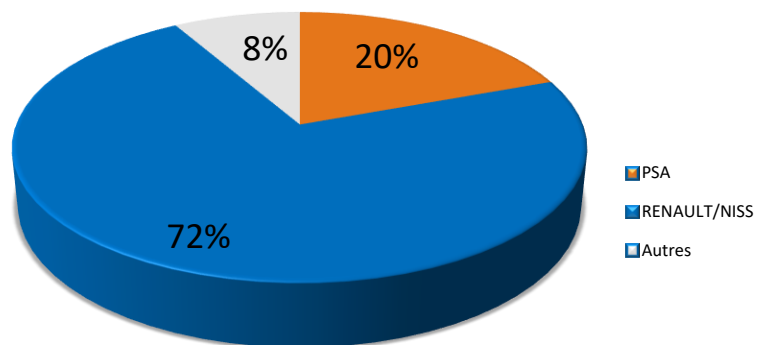
ANGAO (Chine)
GMD METAL TANGER (Maroc)
GMD STAMPING MEXICO (Mexique)

KIMS (Chine)
LUCHARD INDUSTRIE (France)
LS INDUSTRIE (France)

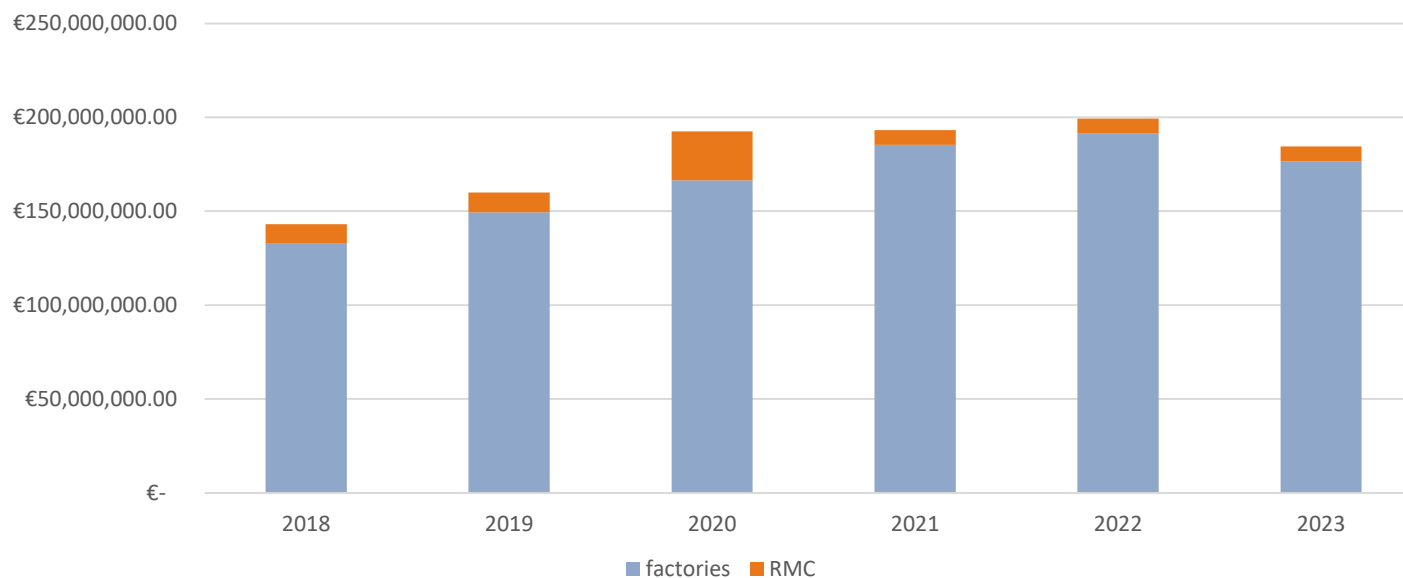
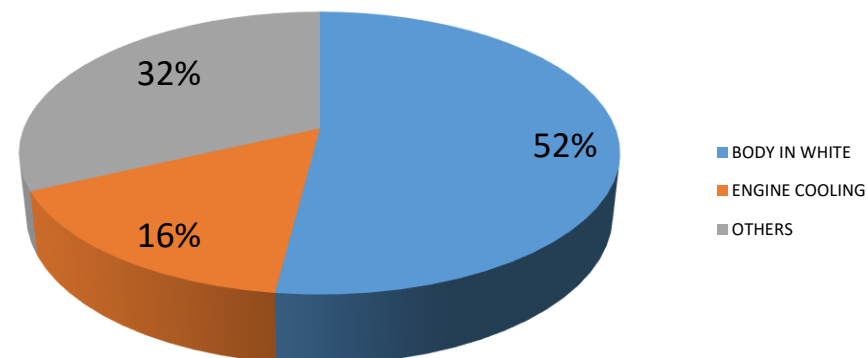
MOTOKOM (Slovaquie)
MOTTAZ INDUSTRIE (France)

RMC (France)
VERON INTERNATIONAL (France)

TO / Customer



TO / PRODUCT



Means of Production

- 2 Transfer Presses 2000T
- 1 Transfer Press 1250T
- 3 Transfer Presses 1000T
- 3 Automatic Presses 800T
- Automatic Press 100T – 600T
- More than 30 Manuel Presses
- Welding (PRP, Robots...)
- Quality Control (3D, Scan, laboratory)

Vehicle Integration



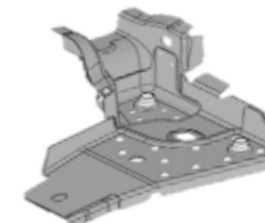
Products



ESP hydraulic block support



Engine Oil Pan



HOUSING - RR AXLE MTG, RH



Front Rail Assembly

SUMMARY

1 GMD GROUP

2 STAMPING DIVISION

3 R&D: RMC

4 SLP MEXICO



3 R&D : RMC



Location : Veron, France

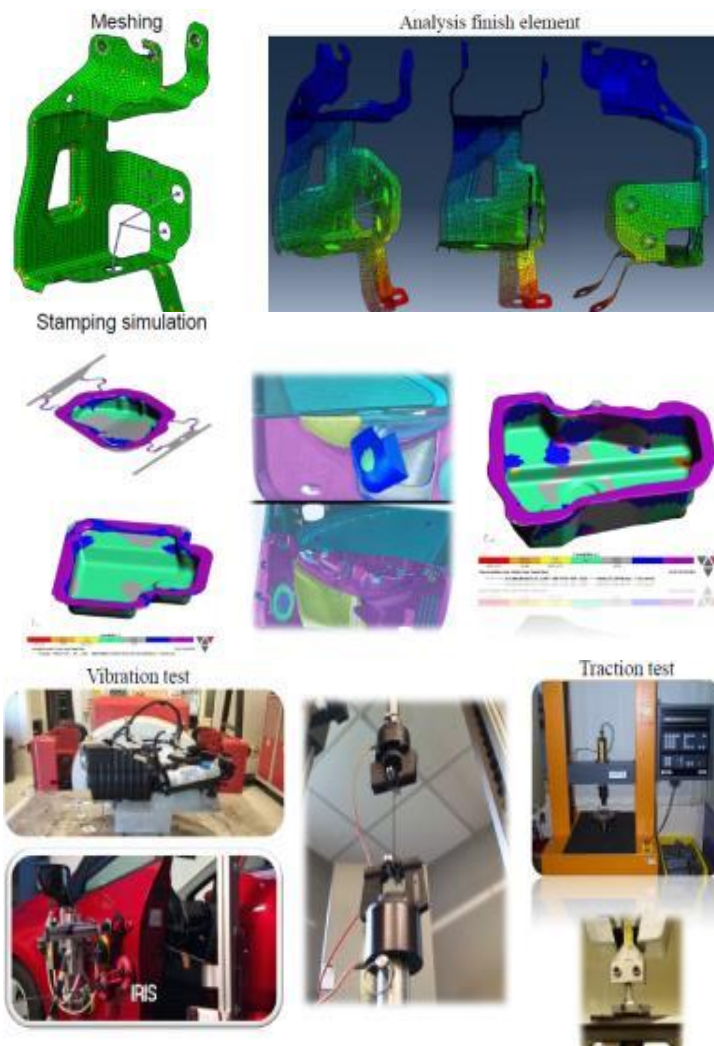
Employees : 21

Number of products developed: 300

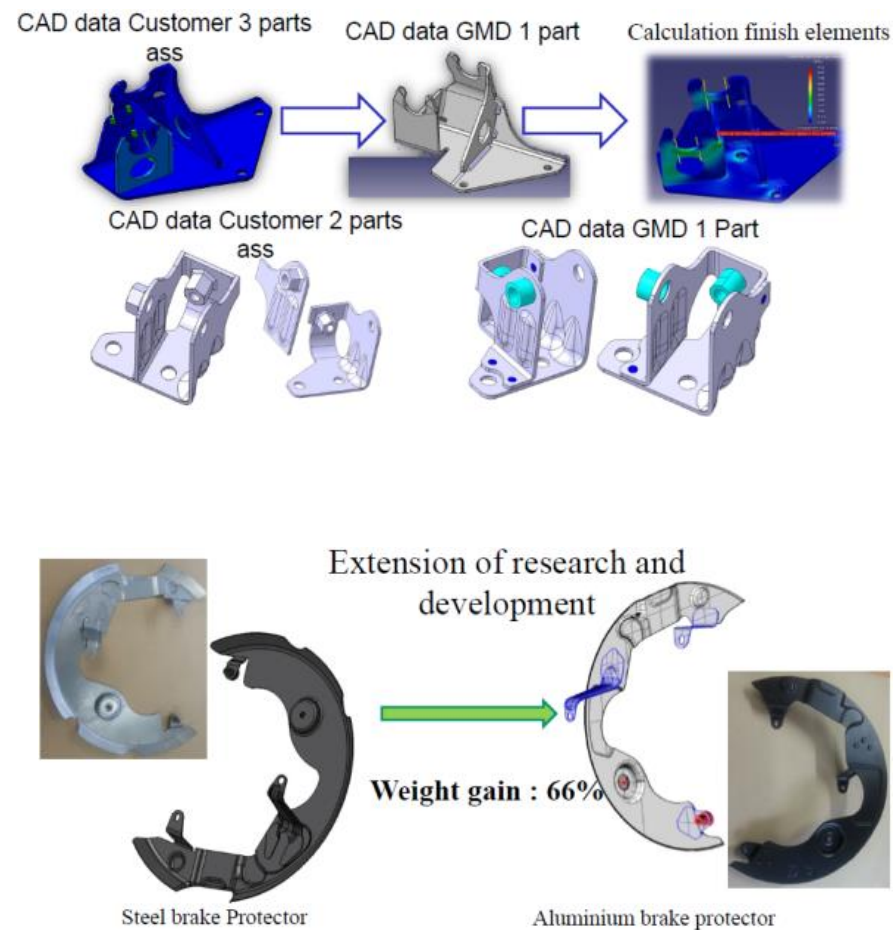
Number of tooling developed: 250

TO Tooling /year: 10 M€

Capabilities :



Achievements:

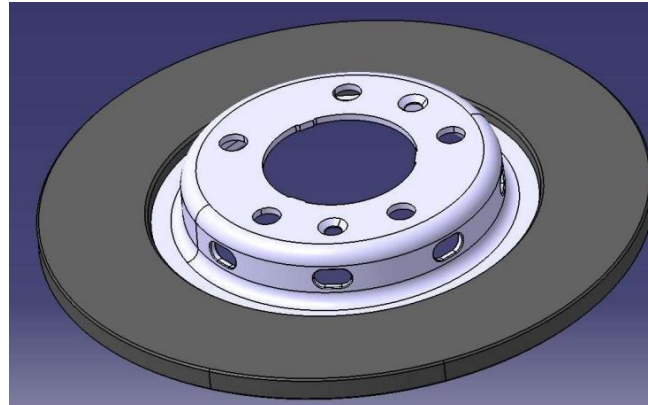


Actual Innovation

Disc Brake :

Bi-material disc, Weight reduction target)

1.2kg / vehicle == (-0.6kg / disc)



- Knowledge in the business with 36 years of experience
- Experienced team in the stamping trade, assembly to meet different customer needs
- Continuous innovation on multi-material parts (Metal, Plastic, Aluminum) Strong proposal and customer support from the development phases Development
- Creation of tools made with partners in China
- Costing ensured by a multidisciplinary team from the smallest part to the large part.

SUMMARY

1 GMD GROUP

2 STAMPING DIVISION

3 R&D: RCM

4 SLP MEXICO



4 GMD SLP



ADRESSE
 PARQUE INDUSTRIAL MILLENIUM
 Calle Cuatro #105, Int. 15, Lote 5 / SLP
 78395 MEXICO

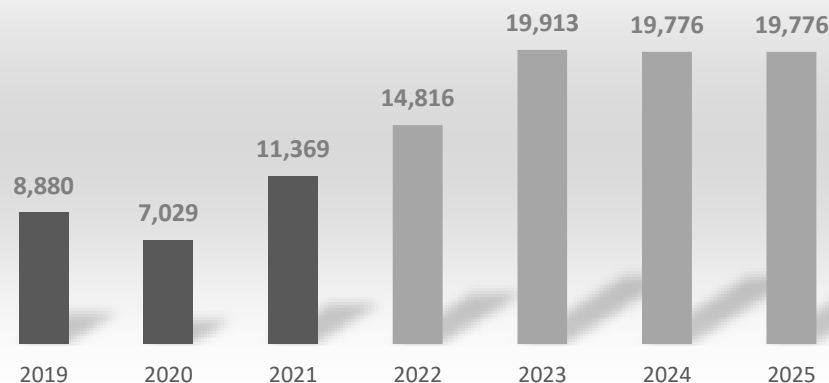
CREATION
 2016

CERTIFICATION
 ISO / TS16949

SURFACE
 Build : 5 500 m²
 Land : 37 000 m²



TO Evolution K€



LOGISTIC PERFORMANCE



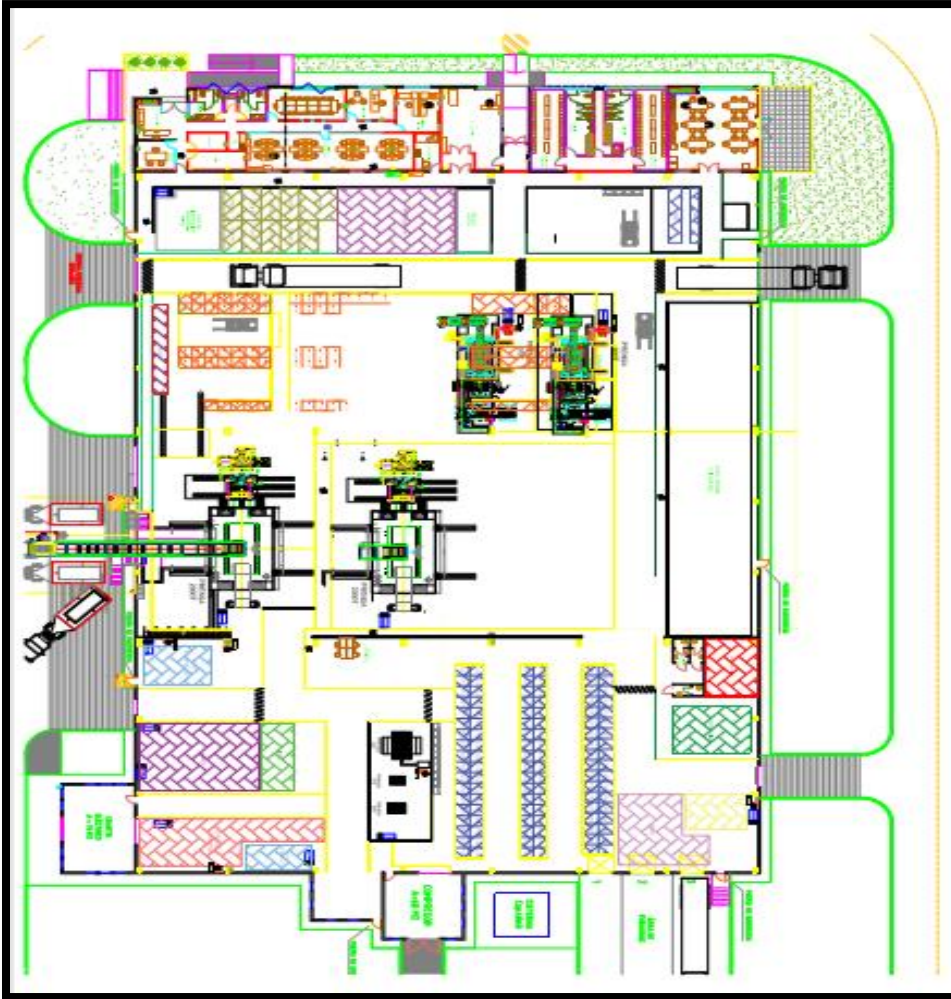
QUALITY PERFORMANCE



- The acquisition of San Luis Potosi plant is part of GMD worldwide development strategy. This plant is located at Central Zone, one of more important zones for automotive industry in Mexico.
- Based on GMD experience with most of the OEMs, our target is now to propose our technology and facilities to OEMs.



- GMD SLP Mexico have possibility of investment with acquisition of new business













Equipment List

- ❖ 1 progressive press 800T
Dimensions (mm): L 3200 * W 1500
- ❖ 1 progressive press 500T
Dimensions (mm): L 3200 * W 1500
- ❖ 2 Transfer presses 2000T)
Dimensions (mm): L 6000 * W 2400
- ❖ 1 Manual press 75T
Dimensions (mm): L 800 * W 480
- ❖ 1 Manual press 80T
Dimensions (mm): L 580 * W 1000
- ❖ Welding & Assembly
 - 3 spot machine
 - 1 assembly bushing line

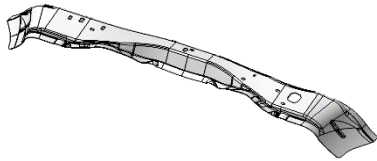


- Example of our current production parts in SLP Mexico plant.

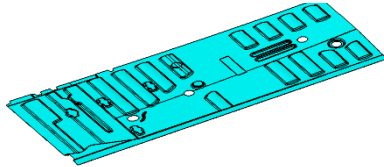
BACKREST SIDEMEMBER	REAR SPACER WITH PIN	BRACKET RH /LH	BRACKET EPUMP CCS R ASSY	BRACKET GUSSET
 <p>Steel: Cold Rolled (Galvanneal) Thickness: 0.9mm</p>	 <p>Steel: Hot Rolled Thickness: 5.0mm</p>	 <p>Steel: Hot Rolled Thickness: 2.5mm</p>	 <p>Steel: Hot Rolled Thickness: 2.0mm</p>	 <p>Steel: Hot Rolled Thickness: 2.2mm</p>
SEAT PAN	FRAME-SIDE-MEMBER	BRACKET-BELT BUCKLE	COVER LH	LEVER RECLINER RH / LH
 <p>Steel: Cold Rolled (Galvanneal) Thickness: 0.9mm</p>	 <p>Steel: Cold Rolled (Galvanneal) Thickness: 0.9mm</p>	 <p>Steel: Hot Rolled Thickness: 2.5mm</p>	 <p>Steel: Hot Rolled (Galvanized) Thickness: 2.9 mm</p>	 <p>Steel: Hot Rolled (Galvanized) Thickness: 2.0mm</p>

- Example of Potential production parts in SLP Mexico plant.

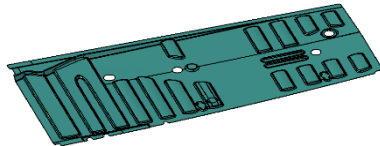
PLATFORM CENT X-MBR



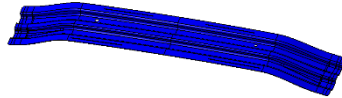
RH FRT FLOOR



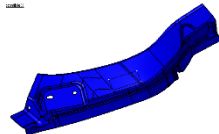
LH FRT FLOOR



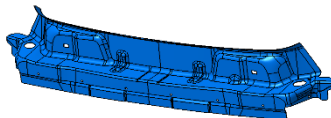
BOW CENT ROOF PANEL



RR FLAP RH INTAKE GUTTER



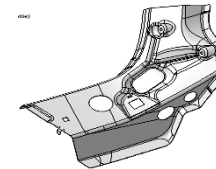
INNER CROSSMEMBER RR ROOF PANEL



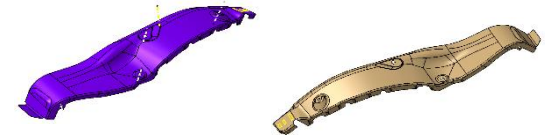
INNER PILLAR CENT RH / LH



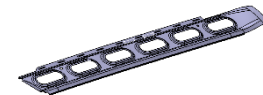
RH RR WING GUTTER GUSSET



FRT PART RH/LH RR WING LINING



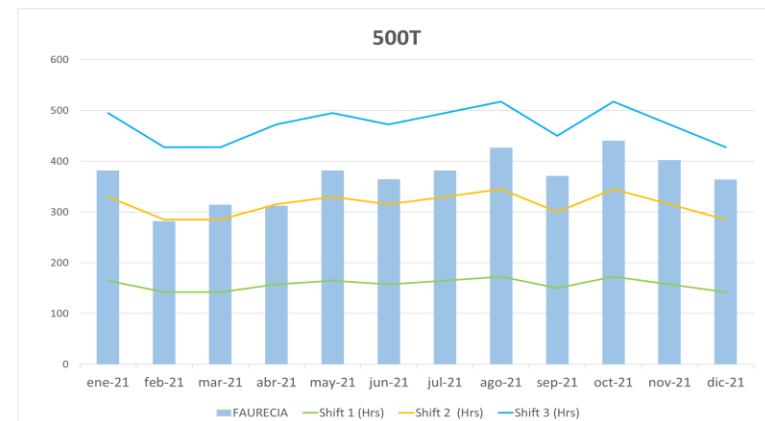
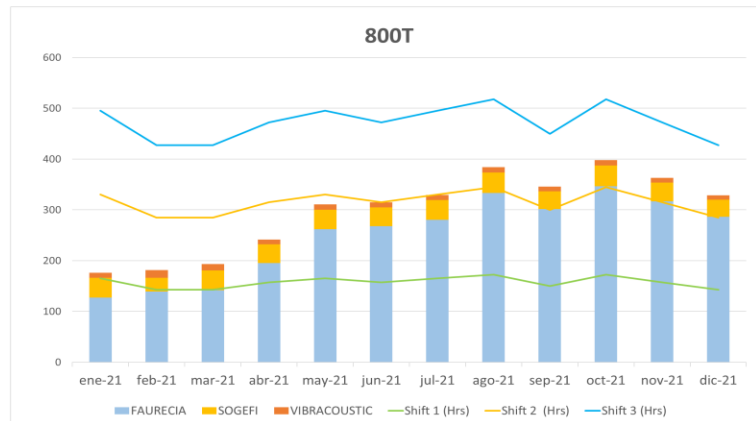
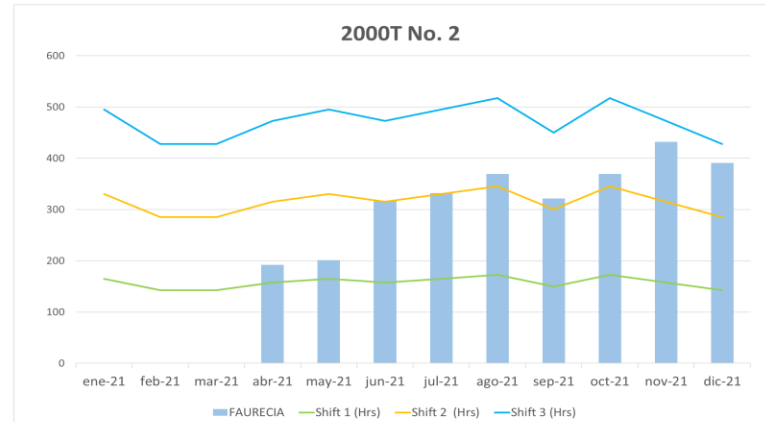
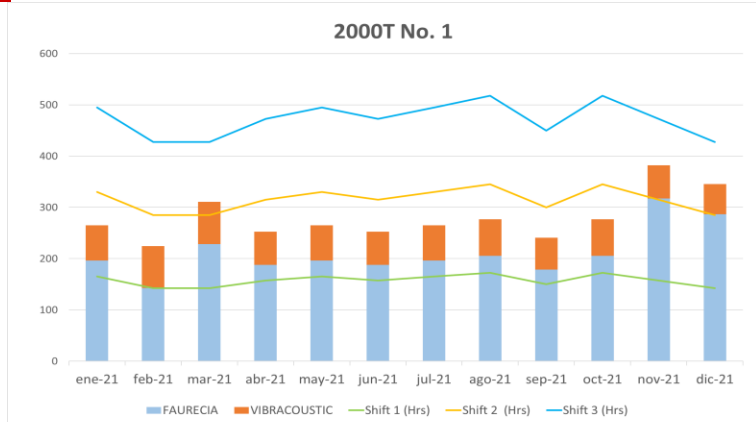
STIFFENER HORIZONTAL DOOR RH



STIFFENER HORIZONTAL DOOR RR RH/LH



Loading Plan– New projects starting this year, however we still have open capacity



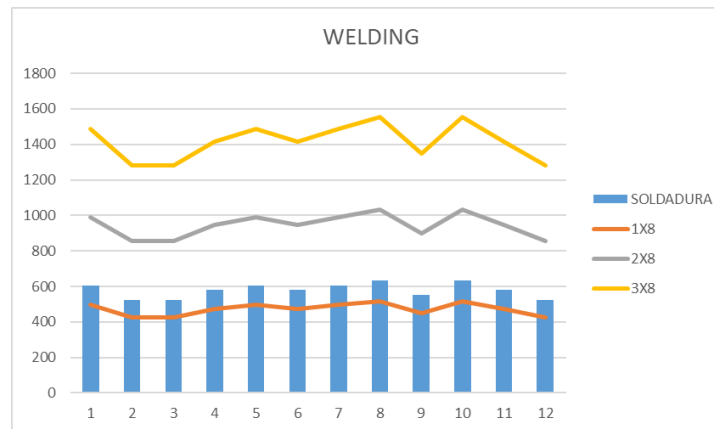
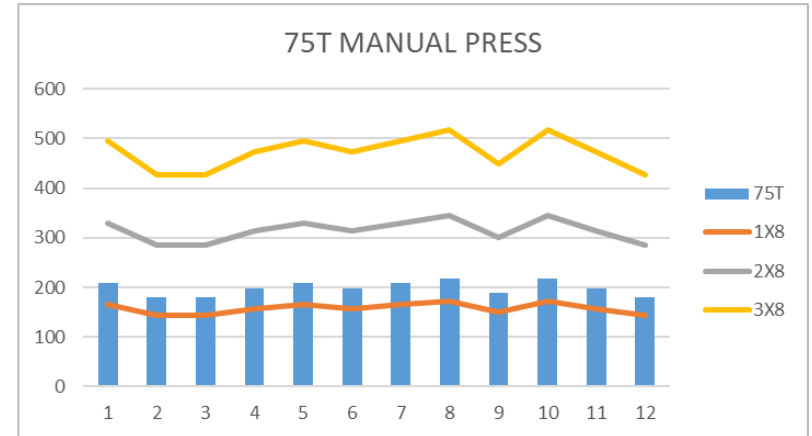
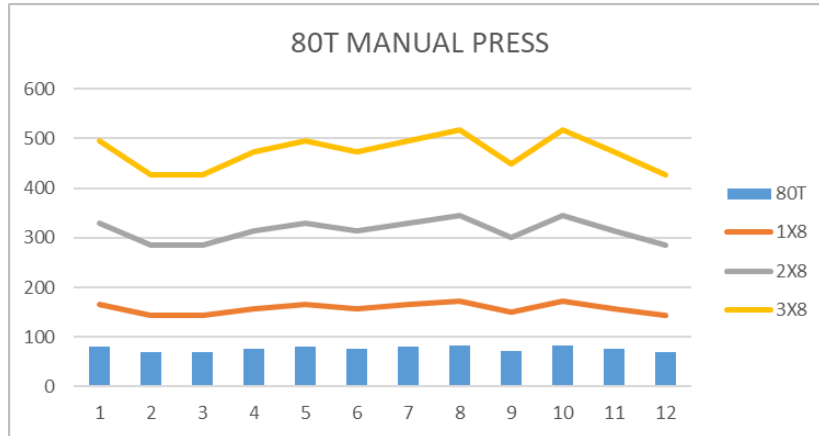
800T Press: Capacity will be at 85%.

500T Press: Capacity will be at 85% by end of the year.

2000T No. 1 Press: Capacity is at 80%.

2000T No. 2 Press: Capacity available 10%.

Plant Loading



200T Manual Press: Capacity 100% available for new business

80T Manual Press: 2 Shifts available for new business

75T Manual Press: 2 Shifts available for new business

Welding line (3 Machines): 2 Shifts available for new business

- SLP Plant has a tool shop dedicated to:
 - ✓ Tooling Preventive Maintenance
 - ✓ Tooling Improvements
 - Quality of the part
 - Speed of the tool
 - Engineering Changes



- IATF 16949 Audit was completed on July, 2019
- Yearly Audit Review was completed on March, 2022



- San Luis Potosi plant is a green field plant inaugurated in 2016
- This green field has been built up based on a partnership with Faurecia
- 2020 Turnover will achieve 7.0 Mio€ and is forecasted to achieve 14.6 Mi € in 2021.
- GMD Stamping Group has the target to increase our customer portfolio as part of continue and stable growth, and keep current business with current customers.
- GMD Stamping Group is available to make an expansion in current Mexico facilities, in order to increase our current capacity for future business.



PLASTIQUE



FONDERIE



ÉTANCHÉITÉ



DÉCOUPAGE /
EMBOUTISSAGE

LE PARTENAIRE GLOBAL

DE LA SOUS-TRAITANCE AUTOMOBILE

