

The background is a dark blue gradient with abstract, flowing lines. On the right side, there is a large, stylized graphic of a rotating metal part, possibly a turbine or engine component, with a bright light reflecting off its surface. Overlaid on this are several translucent, light blue geometric shapes, including a large triangle and a smaller one, creating a sense of depth and movement.

ALUDYNE™

GLOBAL
LIGHTWEIGHTING
SOLUTIONS

**Welcome to
Aludyne Automotive
Mexico City**

Location & Employees

- Located in Mexico City.
- Plant Size: 143,000 Ft². Floor Size: 51,053 Ft².
- Employees: 227
- 3 Working Shift @ Day
- 5.5 Days @ Week

Address: Calz. Ermita Iztapalapa 1478.
Col. Barrio San Miguel, México DF, C.P. 09360.
Phone: 52 (55) 5804-3300.



IATF 16949:2016 Certificate

ISO 14001:2015 Certificate



Certificate of Registration

This certifies that the Quality Management System of


Aludyne Automotive México City S.A. de C.V.
Calzada Ermita Iztapalapa 1478
Col. Barrio de San Miguel
México, 09360, Mexico

has been assessed by NSF-ISR and found to be in conformance to the following standard(s):

IATF 16949:2016

Scope of Registration:
Design, Machining and Assembly of Metallic Parts and Components.

Exclusions: None



IATF Certificate Number: 0412648
Certificate Number: C0050630-TS4-62875
Certificate Issue Date: 22-JUL-2021
Registration Date: 21-JUL-2021
Expiration Date *: 20-JUL-2024


Jennifer Morecraft,
Senior Managing Director

Page 1 of 2

NSF International Strategic Registrations
789 North Dixboro Road, Ann Arbor, Michigan 48105 | (888) NSF-9000 | www.nsf-isr.org

Authorized Registration and/or Accreditation Marks. This certificate is property of NSF-ISR and must be returned upon request.
*Company is audited for conformance at regular intervals. To verify registration call (888) NSF-9000 or visit our web site at www.nsf-isr.org



Certificate of Registration

This certifies that the Environmental Management System of

Aludyne Automotive México City S.A. de C.V.
Calzada Ermita Iztapalapa 1478
Col. Barrio de San Miguel
México, 09360, México

has been assessed by NSF-ISR and found to be in conformance to the following standard(s):

ISO 14001:2015

Scope of Registration:
Manufacture and Assembly of Fabricated Metal Automotive Components.



Certificate Number: C0050630-EM8
Certificate Issue Date: 10-JAN-2020
Registration Date: 25-NOV-2019
Expiration Date *: 24-NOV-2022


Tom Chestnut,
Sr Vice President - ISR,
NSF-ISR, Ltd.

NSF International Strategic Registrations
789 North Dixboro Road, Ann Arbor, Michigan 48105 | (888) NSF-9000 | www.nsf-isr.org

Authorized Registration and/or Accreditation Marks. This certificate is property of NSF-ISR and must be returned upon request.
*Company is audited for conformance at regular intervals. To verify registration call (888) NSF-9000 or visit our web site at www.nsf-isr.org

Founding Year to 2021

SIMPSON
INDUSTRIES

metaldyne

ASAHI TEC
アサヒテック

DIVERSIFIED
Machine Inc.

DIVERSIFIED
Machine Inc.
+
SMW AUTOMOTIVE

chassix
Forming Strength

ALUDYNE



QS9000



ISO 14000



CTPAT
Certification

Q1 Award



ALUDYNE

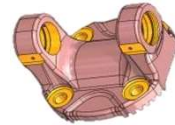
Core Business



Control Arms



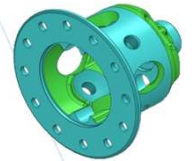
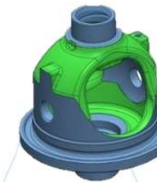
• Hubs



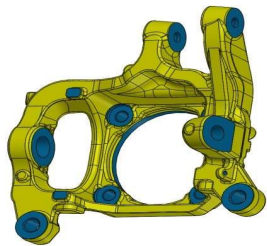
Flange Yokes



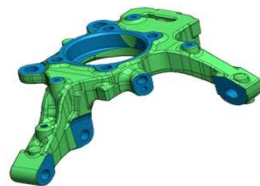
Spindles



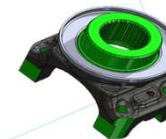
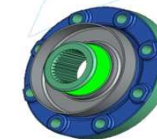
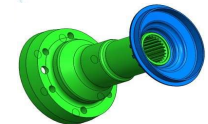
Differential Cases



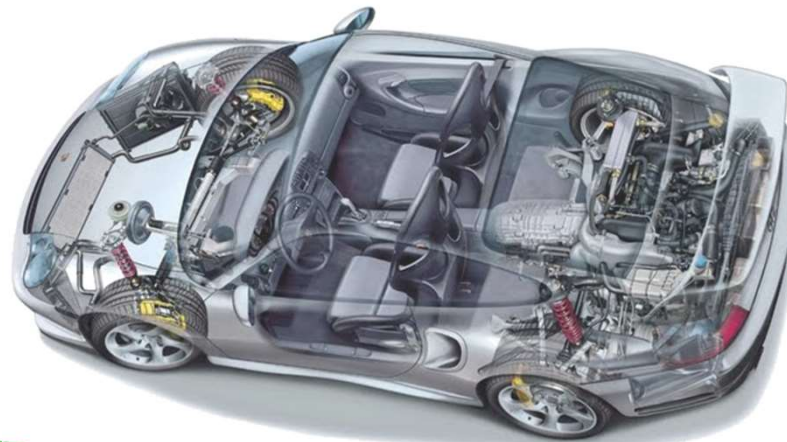
Front Knuckles



Rear Knuckles



Pinion Flanges



Customers Portfolio



Driveline



Casting

STELLANTIS



TRW

Programs & Capacity Installed

Front Knuckle

2500/3500

- RH 4X4

Vol. Per Year : 183,552 Parts.



- RH 4X2

Vol. Per Year: 8,448 Parts



- LH 4X4 & LH 4X2

Vol. Per Year: 192,000 Parts.



Programs & Capacity Installed

- Pinion Flange
Vol. Per Year: 99,500 Parts



Programs & Capacity Installed

Rear Axles

- Pinion Flange 9.76 "
Vol. Per Year: 89,769 Parts



Programs & Capacity Installed

- **Companion Flanges Front Axles**
Vol. Per Year: 670,458 Parts



Programs & Capacity Installed

- **Front Axles 8.0"**

Vol. Per Year: 687,139 Parts



- **Rear Axles 9.5"/9.76" & 8.6"**

Vol. Per Year: 551,075 Parts



Programs & Capacity Installed

- **HD Front Axles 9.25"**
Vol. Per Year: 290,930 Parts



- **SUV Rear Axles 9.5"/9.76"**
Vol. Per Year: 301,269 Parts



Programs & Capacity Installed

- Front DP/DK
- Rear DP
- Rear DK

Total Vol. Per Year: 121,000 Parts



Programs & Capacity Installed

●RH

Vol. Per Year: 27,071arts



●LH

Vol. Per Year: 27,071 Parts



New Programs to be launch



Oct 2022

Front Knuckle
Aluminum



Oct 2022

Rear Knuckle
Aluminum



Aug 2022

Front and Rear Pinion
Flange
Nodular Iron



Jan 2024

Front subframe nodes
Aluminum

Manufacturing Equipment

Horizontal & Vertical Spindle Machining Center – 4 / 5 Axis Equipment

✓ Brands:

- Makino
- Chiron
- SW
- OKK
- Okuma
- Vigel

✓ 4th/ 5th axis capabilities

✓ Siemens / Fanuc

✓ Cat 40, Cat 50, HSK 63 HSK 100 tool holder size

✓ Hydraulic fixture

✓ Automatic Palettizer (allowing part loading while machining)



Manufacturing Equipment

Horizontal & Vertical Lathes Machining Center

✓ Brands:

- Fuji
- Nakamura
- Okuma
- Samsung
- Kitako
- Emag

✓ 3rd & 4th axis capabilities

✓ Hydraulic fixture

✓ Automatic Palettizer (allowing part loading while machining)



Measurement Technology

To assure to our customers the 100% quality of our products, Aludyne Iztapalapa has invested in high level Laboratory equipment.

- CMM Machines in Lab.
- CMM Machines in Floor.
- Roundness measurement equipment
- Surfometer equipment in Lab.
- Surfometer equipment in Floor
- Optical comparator equipment
- Profilometer
- Hardness tester equipments



Aludyne Media and publicity

ALUDYNE™

Lightweighting and Mobility Solutions | Aludyne



<https://mx.linkedin.com/company/aludyne>



<https://es-la.facebook.com/Aludyne>

ALUDYNE

Diego Ruiz | Plant Manager & Key Account Manager | Mexico City

O. +52 (55) 5804 3313

M. +52 (55) 4084 6887

Diego.Ruiz@aludyne.com

Karen Angeles | Commercial Support | Mexico City

O. +52 (55) 5804 3334

M. +52 (55) 1815 9635

Karen.Angeles@aludyne.com

Learn more about Aludyne: <https://www.aludyne.com/>



Thank You