



DASH
INDUSTRIAL DE MÉXICO



About us

We are a 100% Mexican company focused on the Extrusion of Industrial Aluminum Profiles and metal stamping, meeting the highest quality standards that are required today.

We can serve the Automotive and Transportation, Electrical and Electronic, Automation, Petrochemical, Energy, Aeronautical and Industrial Industries in general.



Production capacity

3,000
TONS
— BY YEAR —





INSTALLATIONS

54,000 ft²

WITH LATEST
GENERATION
MACHINERY

And two semi-automated lines for the production of industrial profiles that allow us to always offer the best quality in our products and services.

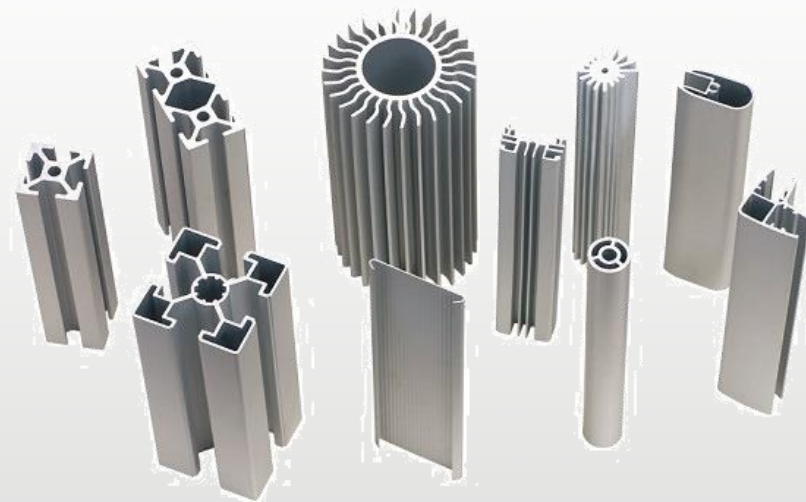


2 EXTRUSION PRESSES

WUXI QIANZHOU

660 U.S. TONS

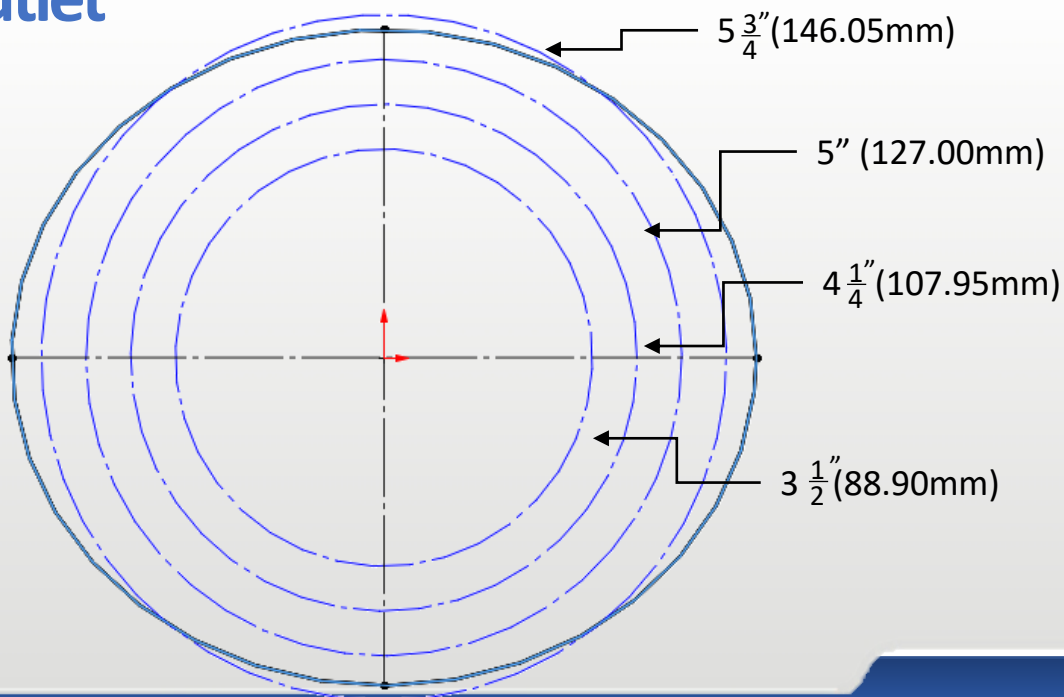
OUTLET 6.5 "





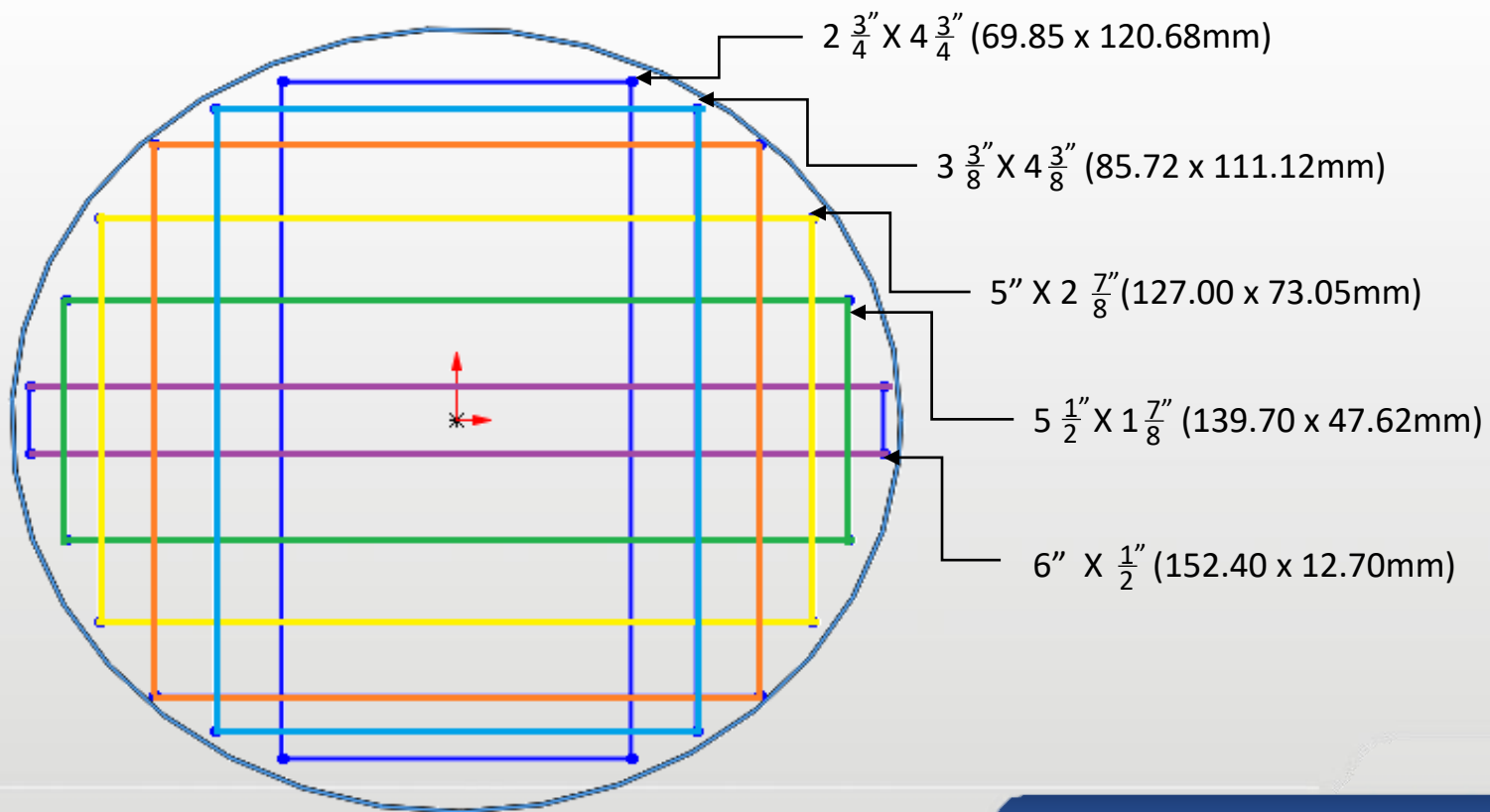
(123.823mm)

Circumscribed outlet diameters





Profile area dimensions

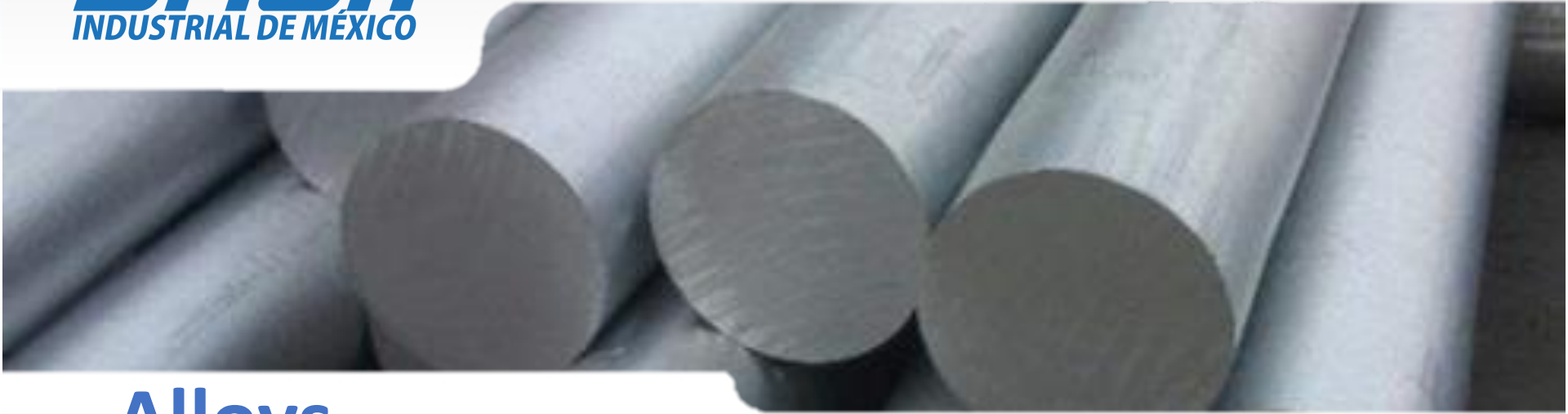




Cooling tables

70 FEET AUTOMATIC AIR-AIR SYSTEM

It allows us to offer the highest quality standards to obtain the best solutions for industrial profiles.



Alloys

6005 • 6060 • 6061 • 6063

Typical applications

Construction, automotive and transportation industry, petrochemical industry, renewable energies, transportation in general, heavy structures and structures with good surface finish, doors, windows, walls, stairs, fences, dissipators, etc.



Temples

T2 • T4 • T5 • T6

2 **AGEOVENS** **AUTOMATIC**
AIR-HEAT SYSTEM

Hardness according to
product engineering
specification



Remelted process

CAPACITY

Holding: 1,100 lb.
Melting: 440 lb./h



Commitment

- Guarantee products of the highest quality.
- Excellent personalized service.
- Manufacture of special measures with a high degree of difficulty.
- Technical Advice.



Norms

- NMX-CC-9001-IMNC-2008
- EN 755-9:2008
- EN 12020-2:2008
- NMX-W-039-SCFI-2013
- Aluminum standards and data 2009, Section 6-1 y 6-2.
- Registration record of international alloy designations and chemical composition limits for wrought aluminum and wrought aluminum alloys; Edition 1993.
- International alloy designations and chemical composition limits for wrought aluminum and wrought aluminum alloys. Edition 2002.
- ASTM B 221
- Military Standard MIL-STD-105 D; UNE 66020.
- Norma ISO 9001:2008



Petrochemistry

Industry



Petrochemistry

Industry

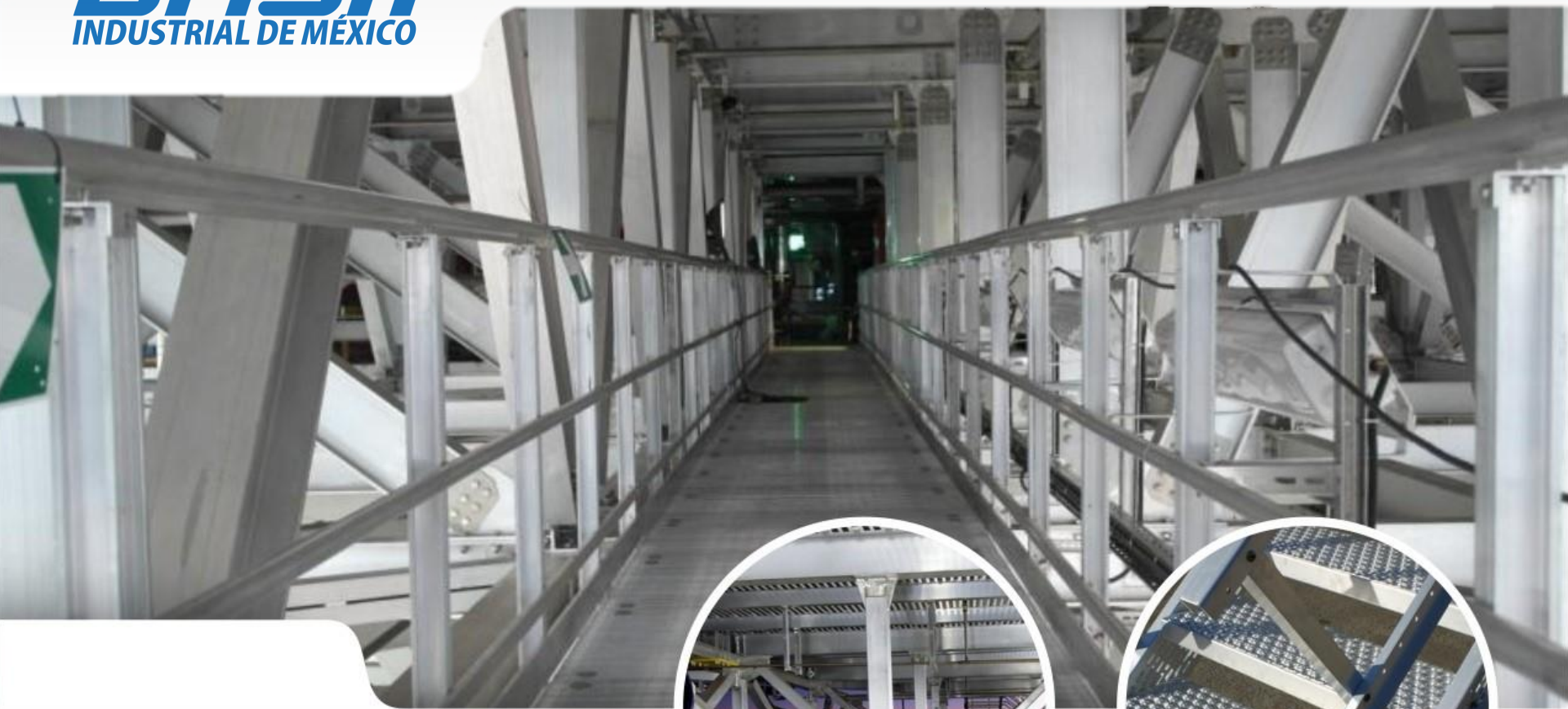




Heliports and Automotive

Construction



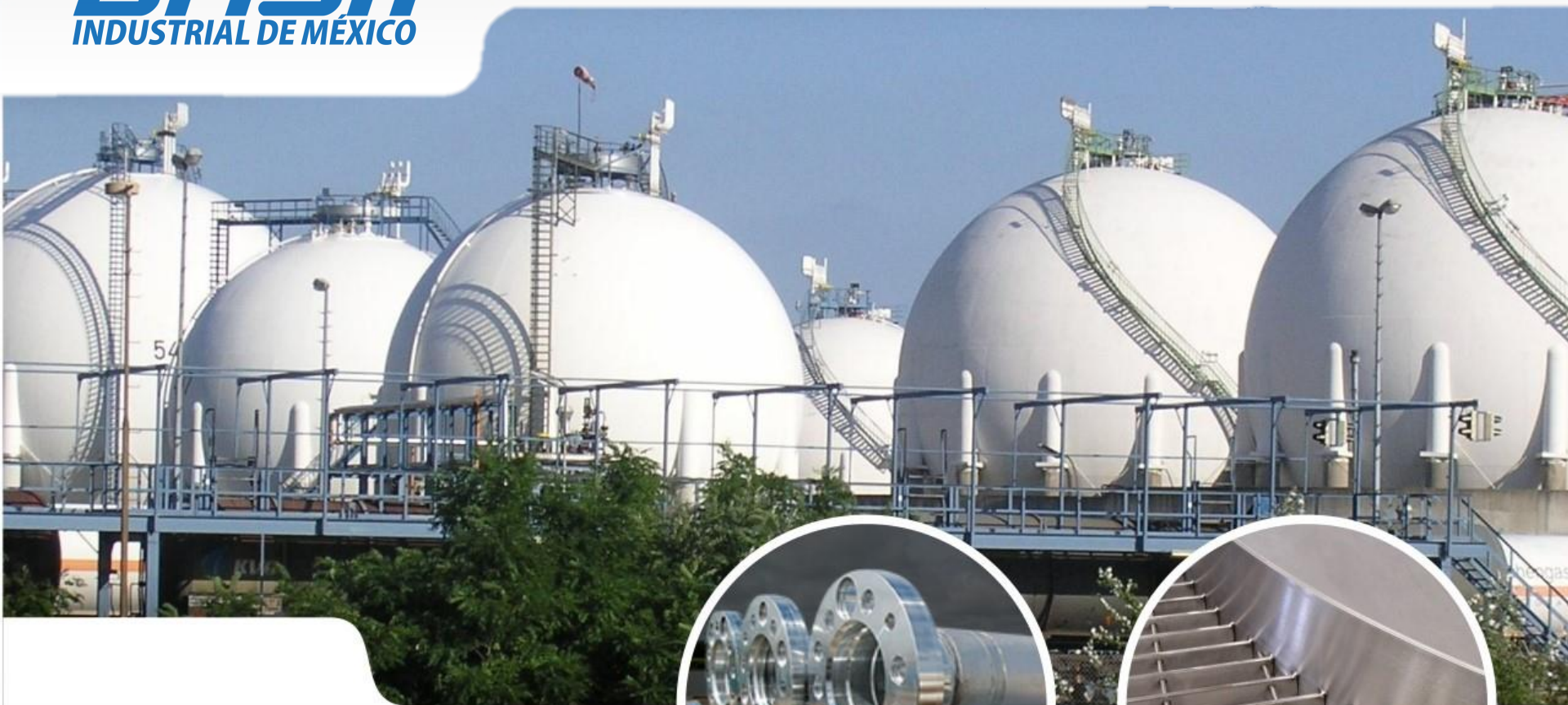


Monumental

Construction



DASH
INDUSTRIAL DE MÉXICO



Energetic
Industry



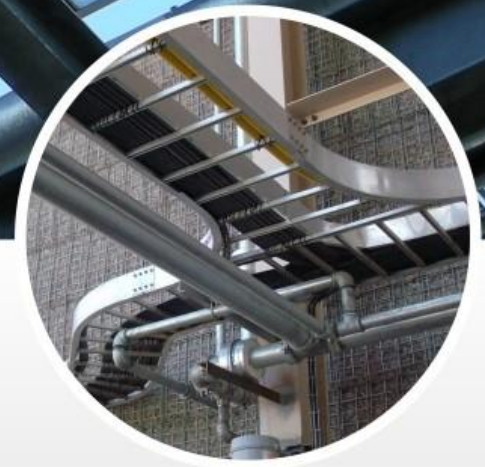
Energetic

Industry



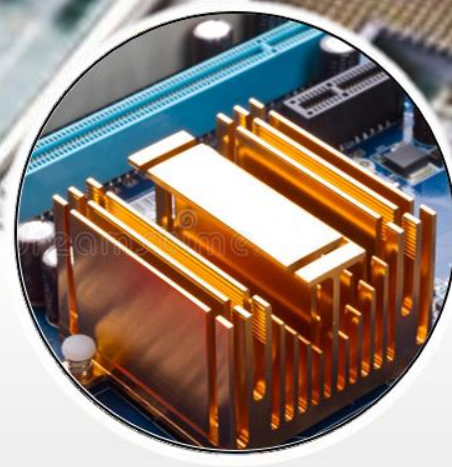
Electrical

Industry



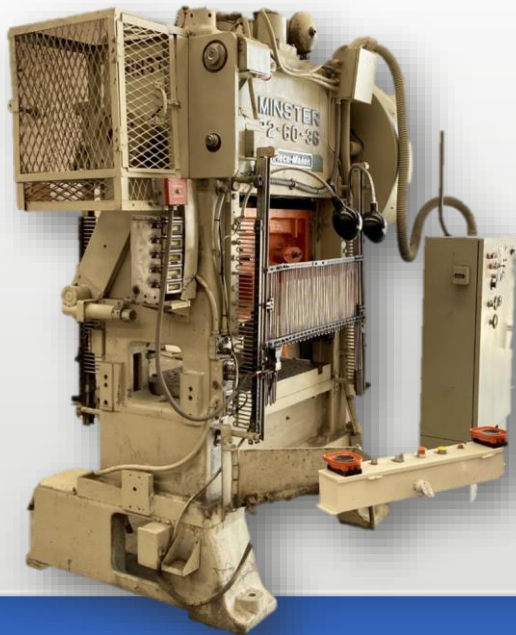


electronics
Industry

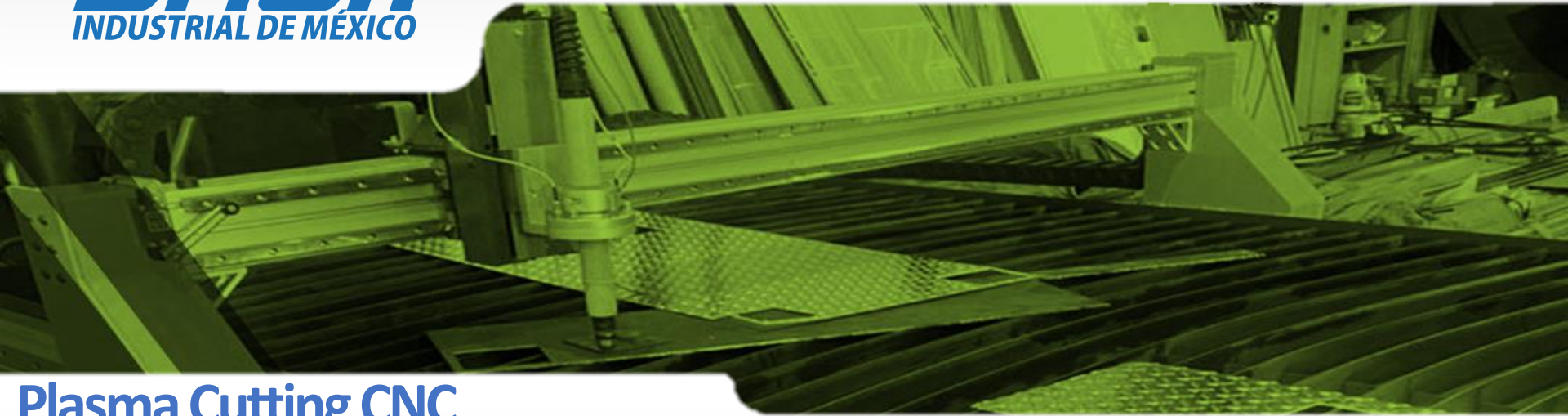




Metal stamping machines



- P2-60-36 minster
- S2-100-48-30 minster
- EM2-150-48x30 L&J



Plasma Cutting CNC Cyrious Lite 5x10



- cutting table size 62 "x 122"
- Speed Guide 25mm Linear Rails
- High speed DTHC5 torch height control with isolated remote sensor module



DASH Industrial de Mexico

Plant

Address: El Terrero 9612
Colonia Toribio Ortega, 32676
Cd. Juárez Chih. Mx
Telephone: 52 (656) 831 2603
Email: Indsicomoro@gmail.com

THANK YOU