



Metal Stampings

Small Assemblies

---



**Corporate Sales Presentation**

## Philosophy

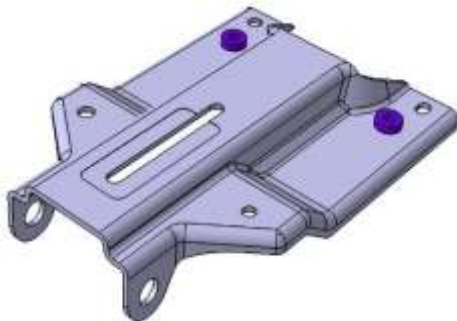
To maintain a Total Quality Management System, premised on the following criteria.

1. Providing products and services that meet our customers well-defined need, use or purpose.
2. Satisfying customers' expectations.
3. Complying with our customers' standards and specifications.
4. Providing products and services at a competitive price.
5. Gradual and orderly improvement and growth.

## Introduction

Kenosha Metal Products, Inc. is a manufacturing corporation that produces metal stampings and small assemblies.

Through internal growth founded on superior quality, delivery, price and technical support, Kenosha Metal Products has established itself as a preferred supplier to the automotive industry.



***Established in 1960***

### ***Manufacturing Facility***

Pleasant Prairie, WI (70,500 Sq FT)



### ***Operational***

Three Shifts

## Equipment and Capabilities



9 Presses – Progressive, Programmable cams, Electronic Die Protection

Press Capacity:

(3) 85 ton OBI presses

(1) 88 ton OBI press

(1) 121 ton OBI press

(1) 440 ton Straight Side

(1) 165 ton OBS press

(1) 176 ton “2 point” OBS press

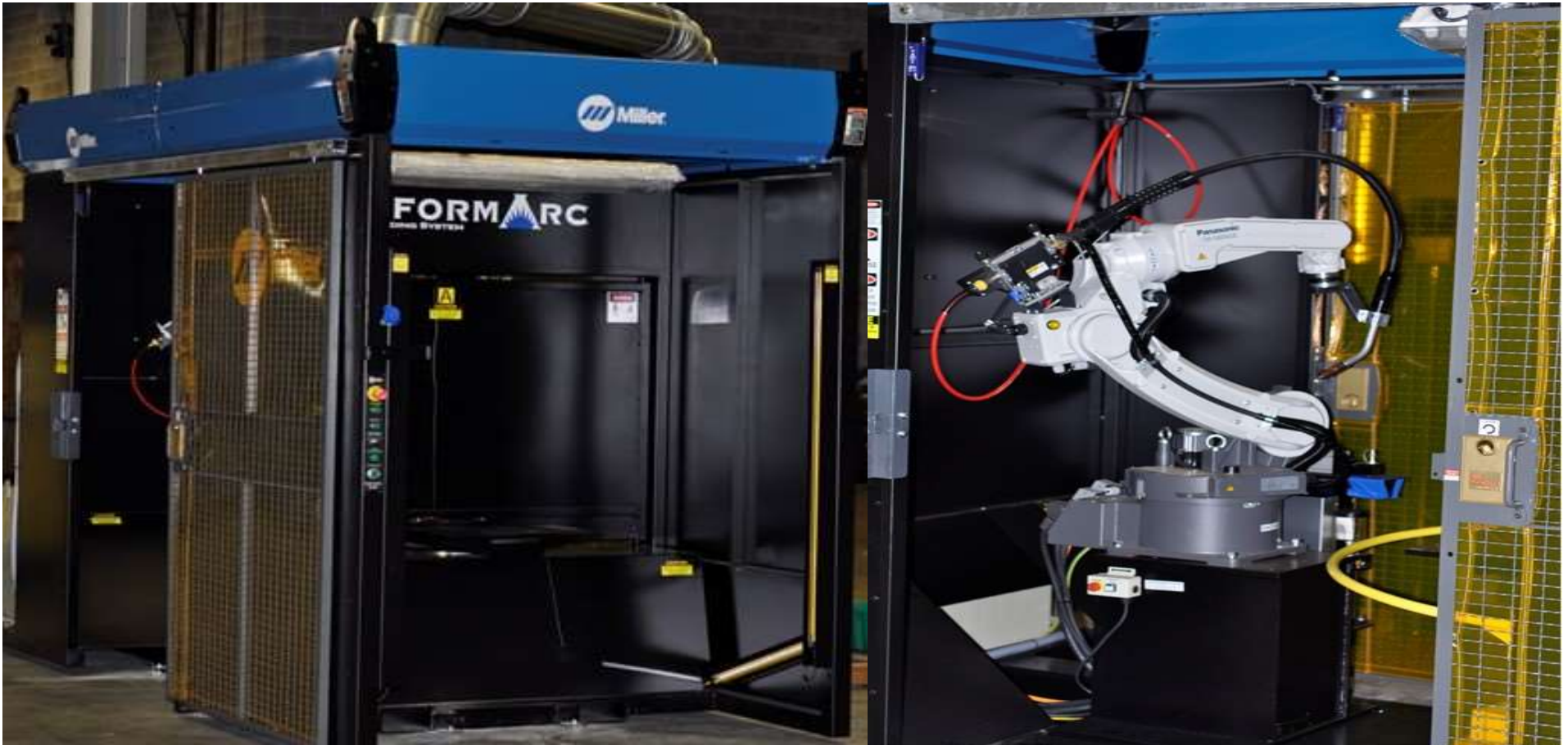
(1) 275 ton “2 point” OBS press

Metal Stampings

Small Assemblies

## Equipment and Capabilities

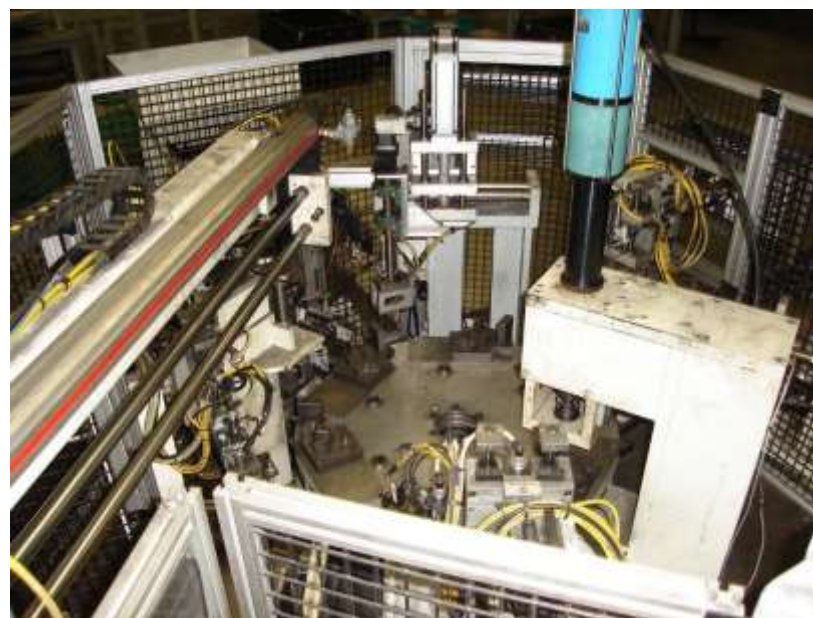
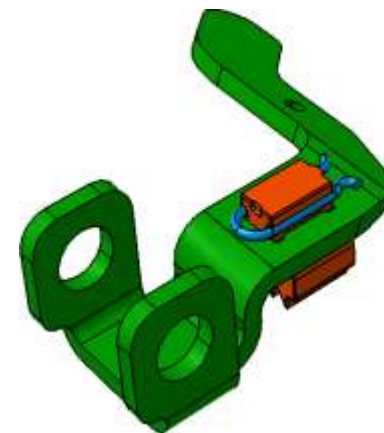
### Mig/Tig Robotic Welding





## Equipment and Capabilities

### Automated Tilt Lever Assembly Work Center





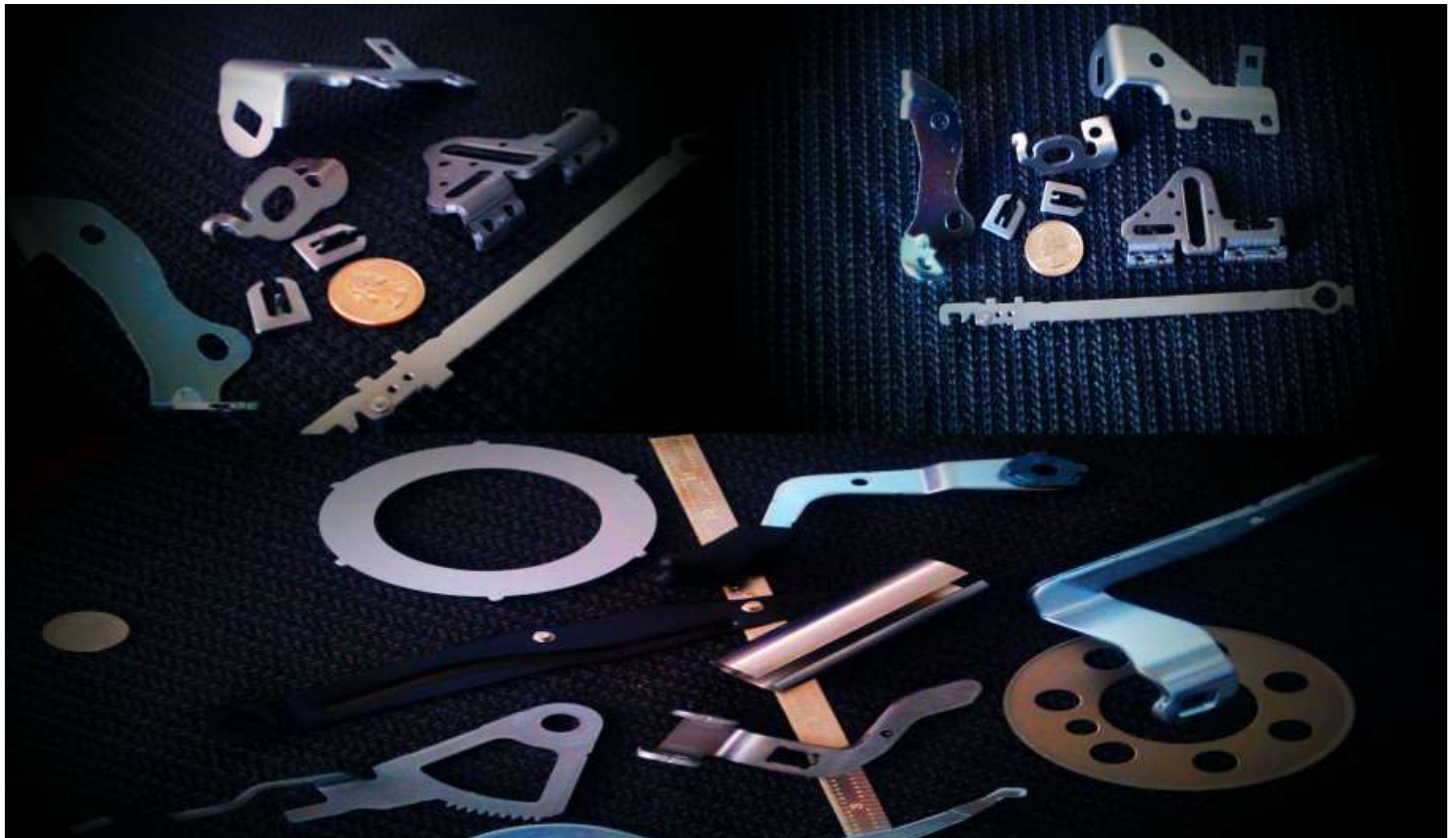
## Capabilities and Equipment

**Flexible  
Automated Assembly  
Work Center**



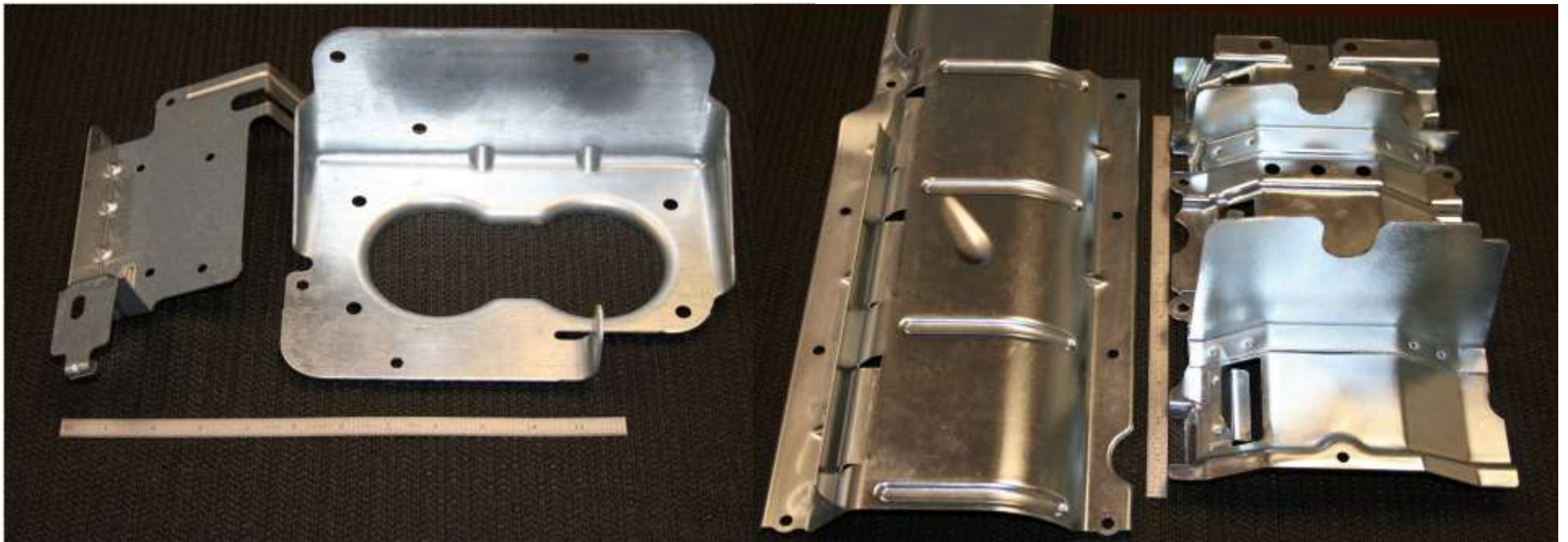


## Product Size Range





## Product Size Range



## Product Size Range



## Customer Base & Corresponding Markets

### **NSK**

*TOYOTA*

Tilt Lever Assemblies,  
Telescope Lever Assemblies,  
Energy Absorption Brackets,  
and Key Lock Collars.

*HONDA*

Pivot Brackets, Tilt Brackets,  
and Inner Brackets

*NISSAN*

Tilt Lever Assemblies,  
Telescope Lever Assemblies,  
and Mounting Brackets

*FORD/MAZDA*

Tilt Lever Assemblies,  
Telescope Lever Assemblies,  
Energy Absorption Brackets,  
Over Brackets, and Key Lock  
Collars

*MERCEDES*

Pivot Brackets, and Reach and  
Rake Plates

### **YOROZU**

Front Suspension Components

### **MSC**

*Akebono*

*Federal Mogul*

*Nisshinbo*

*America Friction Technologies*

*TMD – Mexico*

Quite Steel®

Brake Shims

### **FIAT / CHRYSLER**

Engine Component Mounting  
Brackets, Internal Engine and  
Transmission Parts,  
Suspension Components,  
Interior Trim Attachment  
Brackets, etc.

### **ATF, Inc.**

*DELPHI / AUTO LIV*

*CONTINENTAL*

*BROSE*

Airbag Mounting Components  
Brake Input Rods  
Seat Spindle Adjuster

### **AISIN HOLDINGS OF AMERICA**

Electrical Mounting  
Components

### **POLLMANN N.A.**

Sun Roof Components

### **UFI FILTERS**

Fuel Filters Assemblies

### **CTS of CANADA**

Mounting Brackets

## On Site Capabilities

APQP Based Program Management

Design assistance for improved manufacturability

CAD Software:

CATIA V5

SolidWorks

Solid Edgeccc

Anvil 1000



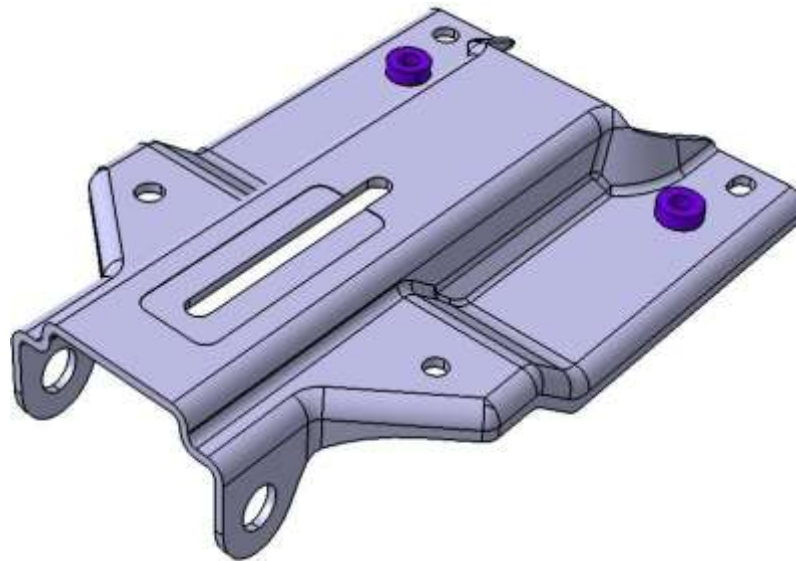
EDI: Fully capable of ASN Transmission, Build Schedules  
and Shipment Schedules



## Technology

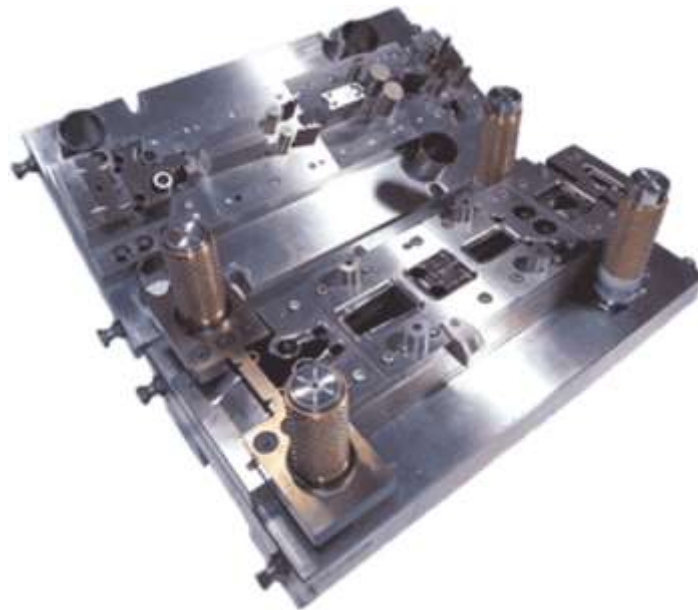
In-Die Tapping and Staking capability (i.e. Clinch Screws and Nuts).

- Minimizes or eliminates secondary operations
- Reduces costs
- Enhances quality



## Tooling Maintenance

All tooling is maintained internally (3 shifts).



## Quality Systems



**ISO 9001:2015**

Registration date:  
 11/7/2007

Registrar: NQA, USA

## Quality Resources

- 2 Brown & Sharp CMM
- 1 Tinius Olson, Tensile Tester
- 1 Optical Comparator





## 2021 Quality Performance

- Total Parts Produce      57 Million
- Shipments Made          6455
- On-time delivery          99.8%
- PPM Level                  Less than 18

Metal Stampings



Small Assemblies

---

Thank You.