

***ekide*group**

We are committed to the solution

OUR BUSINESS ACTIVITIES



INDEX

01

WHO WE ARE

02

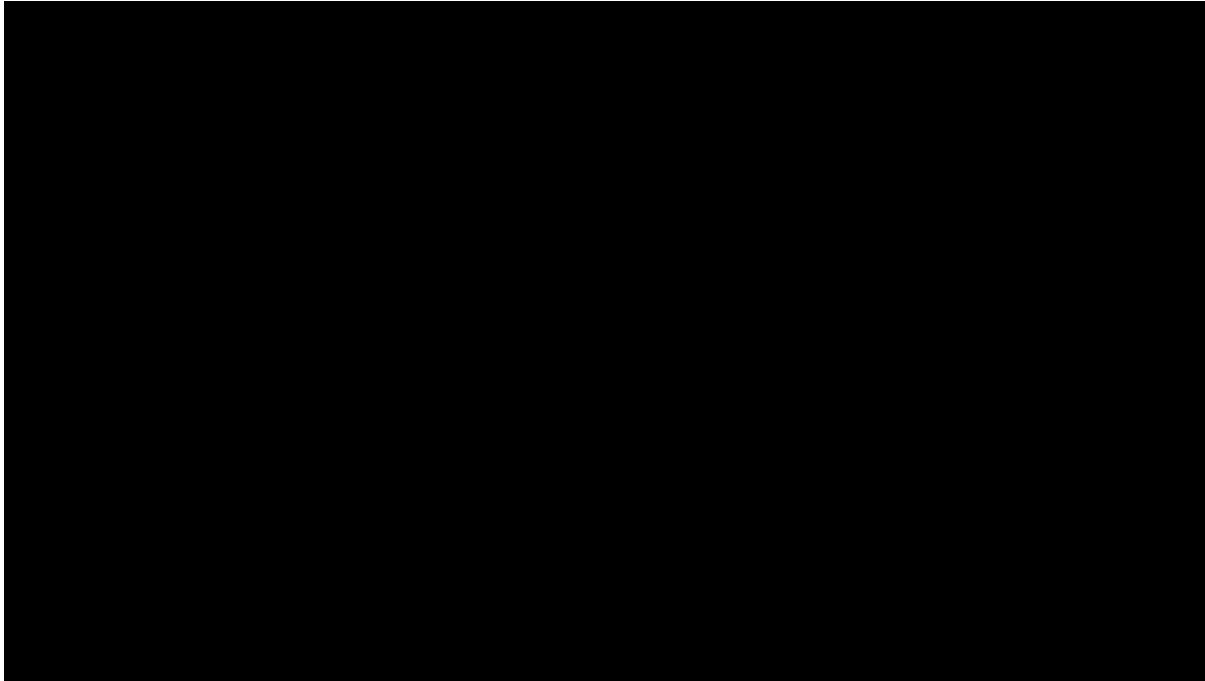
WHAT WE DO

- > ENGINEERING & FABRICATION
- > CHECKING FIXTURES
- > MACHINE VISION & ROBOTICS

01 | WHO WE ARE



CORPORATE VIDEO



<https://www.youtube.com/watch?v=6HngjvfQuN8>

FACTS & HISTORY

30 *years* of entrepreneurial roots, commitment and global ambition

1988
Beginning
Numeric control
engraving machines



1991
Ekide-Maier S.Coop.
Commercial
relationship



2000
Strategic partners
Maier, Mapsa, Fagor
Electrodomésticos, etc.



2005
Ekide China
First steps in
internalization



2015
Ekide Bizkaia
New installations
Checking figures for metal parts



2018
Ekimen Lab
Mock-ups, scale 1:1
Ekide & Sormen



1990
Ekide S.L. Establishment
Located at Mondragon University
CAD/CAM services



1995
Rapid Prototyping
Nueva actividad, tecnologías
e instalaciones



2003
New installations
+Services: Design & Engineering,
Rapid Prototyping, Checking
Fixtures, Assembling Fixtures



2010
Machine Vision & Robotics
First projects are launched



2017
Ekide México
Engineering & Manufacturing
Checking Fixtures



2018
Ekide USA
Engineering
Commercial Office



HEADQUARTERS & MANUFACTURING PLANTS

ekideméxico

- Engineering Department
- Manufacturing of composite, metal and plastic parts
- Design and Manufacturing of Checking Fixtures
- Machine Vision & Robotics



ekideusa

- Commercial Office
- Engineering Department
- Assembly lines



ekidegroup headquarters

- Engineering Department
- Design and Manufacturing of Checking Fixtures for plastic parts
- Machine Vision & Robotics
- Assembly lines



ekidebizkaia

- Design and Manufacturing of Checking Fixtures for metal parts

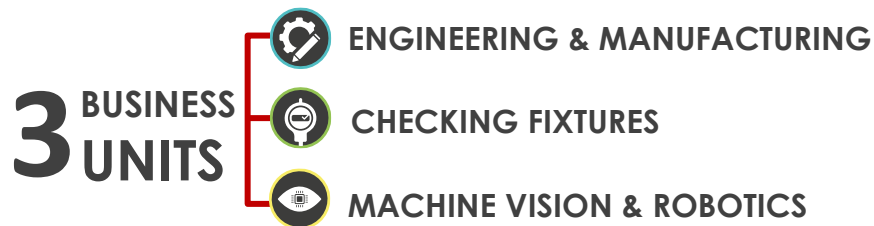


ekidechina

- Offices for Mould Design and Rapid Tooling
- Manufacturing of composite, metal and plastic parts



FIGURES



550
WORKERS

>50
ENGINEERS

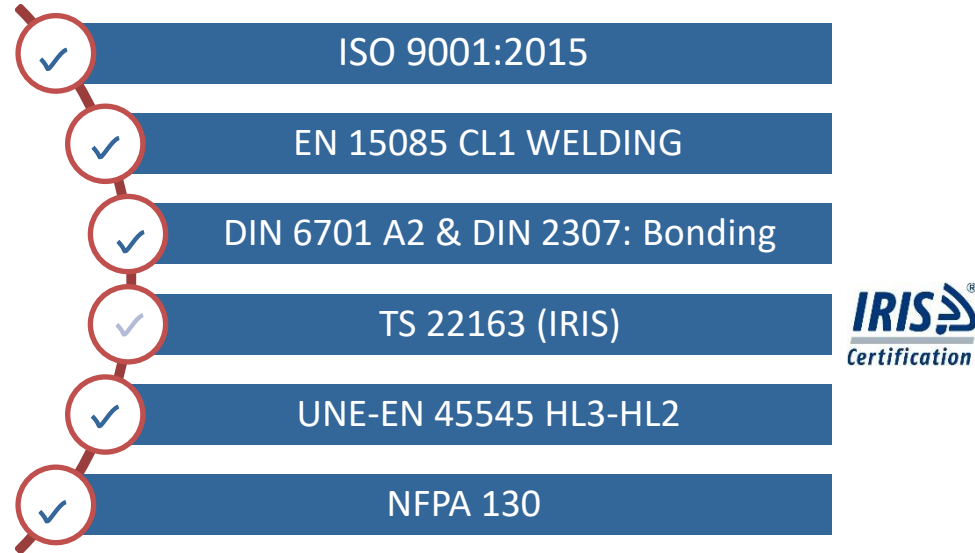
40%
HIGHER GRADUATES 

46 € | 2020
TURN OVER

48 € | 2021
TURN OVER
FORECAST

4,5%
of our sales to
R&D

QUALITY & CERTIFICATIONS



02 | WHAT WE DO

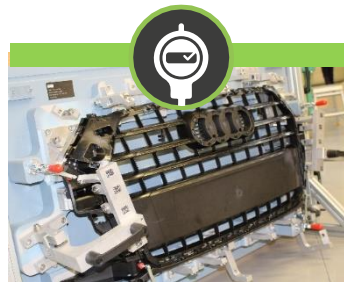


OUR BUSINESS UNITS AND SERVICES

ENGINEERING & MANUFACTURING



CHECKING FIXTURES



MACHINE VISION & ROBOTICS



Ekide Group, through its 3 business areas, offers a **comprehensive solution** to companies dedicated to products development; both related to their industrialization; as well as verification, dimensional control and production automation.



ENGINEERING & MANUFACTURING



DESIGN



ENGINEERING



MOCK-UPS

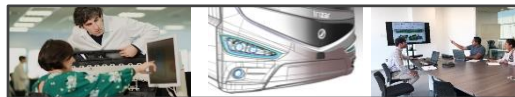


MANUFACTURING

CAPACITIES



DESIGN & ENGINEERING



MOCK-UPS



MANUFACTURING



PAINTING & FINISHING



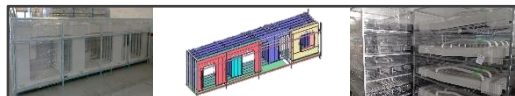
ASSEMBLY



MEASURING



LOGISTIC



In our role as supplier of complete systems, we offer perfectly coordinated projects, with **innovative and complex in-house designs, systems developments, mock ups & virtual reality, and manufacturing processes** in any kind of material.

CAPACITIES



DESIGN & ENGINEERING

- Conceptual Design
- Engineering
- Feasibility Study
- Virtual Reality
- Reverse Engineering



MOCK-UPS

- Scale 1:1 mock ups
- Prototypes



MANUFACTURING



PAINTING & FINISHING

- Wet painting
- Robot wet painting
- Powder painting
- Polishing



ASSEMBLY

- Assembly facilities
- Bonding



MEASURING

- CMM



LOGISTIC

- Warehousing
- Kits packaging design & manufacturing
- Returnable transport packaging design & manufacturing

PLASTIC

- Plastic Injection

METAL

- Welding [EN 15085 CL1]
- Bonding [DIN 6701 A2 & DIN 2307]
- Robot Welding
- Bending facilities
- Hidraulic Stamping
- Mechanical Stamping
- 2D laser
- 3D laser
- CNC punching
- CNC Machining 3 axis
- CNC Tube bending

COMPOSITES

- Polyester & Phenolic Hand lay up
- Polyester & Phenolic vacuum infusion
- Pre-preg
- Carbon fibre parts
- Autoclave
- SMC



Railway



EKI PANEL
Sandwich panels for train floorings

Bus



Campers



Electromedicine



Automotive



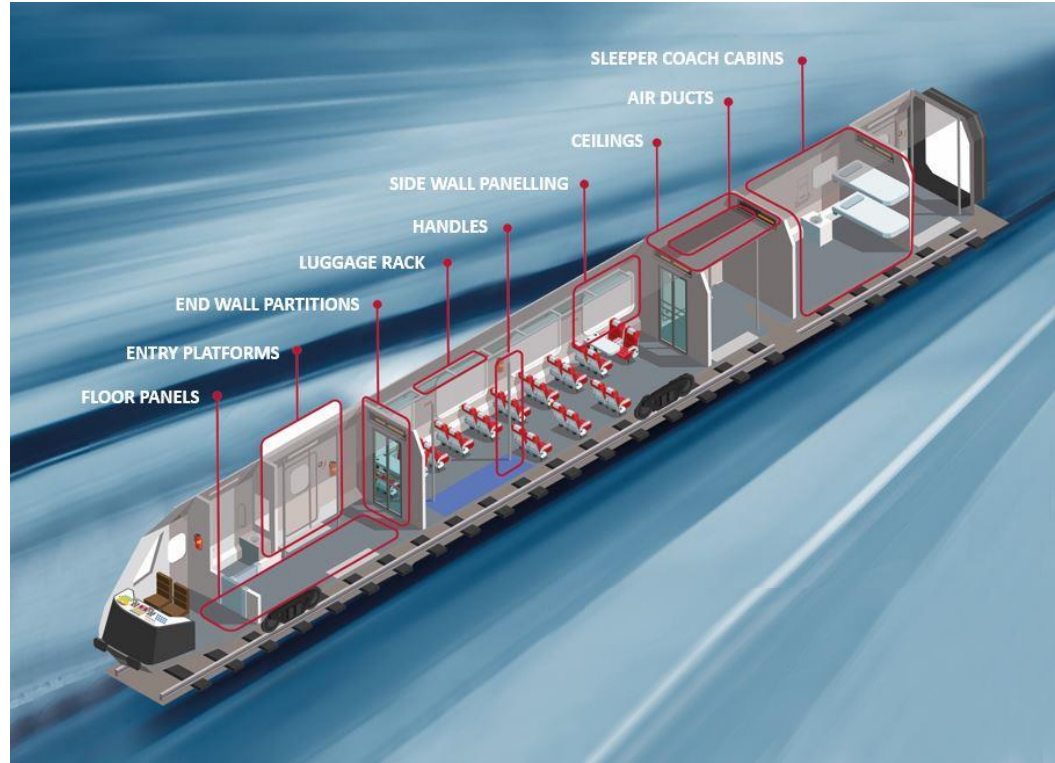
Mock-up & Prototypes



PRODUCTS · EXAMPLES



Railway



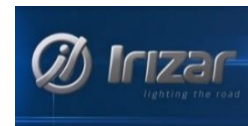
PRODUCTS · EXAMPLES



Automotive



MAIN CUSTOMERS





CHECKING FIXTURES



CAD CATIA NX



CAM/CNC/THREAD-CUT



ASSEMBLY



DIMENSIONAL CONTROL



BLUETOOTH



R&R

R&R VALIDATION

OUR MANUFACTURING PLANTS



ekideméxico



ekidegroup
headquarters



3 MANUFACTURING
PLANTS

15 
DESIGNERS

8000
sqm for
manufacturing

ekidebizkaia



Export to
more than
20
COUNTRIES

CAPACITIES



- **Software:** CATIA / NX
- **Checking fixture typology:**
 - Cubing car.
 - MMT, 3D.
 - 1D: DTI, Gap and Flush
- **Volume production:** + 600 checking fixtures per year
- **Precision:** 0,05mm
- **Part control:** Any part from the car
- **Customer:** Tier 1 and OEM



CAD CATIA NX



CAM/CNC/THREAD-CUT



ASSEMBLY



DIMENSIONAL CONTROL



BLUETOOTH



R&R VALIDATION

CAPACITIES



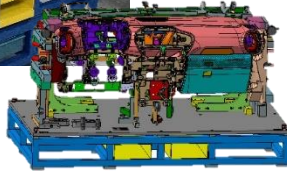
GAGE Manufacturer Profile and Evaluation Summary

General	Company Name		Ekide Group		Email address		gonale@ekide.es		Fiscal Yr Sales		Production Tooling		7.080.000 €		Currency		EUR																	
	Address		Ekide S.L. · Tellería 2 · 20500		Website		https://www.ekide.es/		Capital Investment		Tooling Equipment				mechanical + service																			
	City		Arrasate-Mondragón, Gipuzkoa		Year Established		1988		Number of Employees		Design		14		QC Insp.		6																	
	Country		SPAIN		Type of business		Control Gages and CMM Fixture				NC Data		19		Mgmt		5																	
	Phone Number		(+34) 610928664								Tool Makers		15		Total		59																	
Qual	Fax Number								Customer Type percentage		Automotive				Appliance																			
	Accreditation & certifications		ISO 9001		Inspection Equipment		5 CMM Machines (3xLk, Cort 3 and Innovaia Metro)				No. of Companies or Technical Agreement in Country		2 in Spain (Mondragon and Zamudio)																					
Design	# of Design Stations		13		Design Software		Catia and Nx.		Total Design Source		In %		100%		No. of Companies or Technical Agreement outside of country		1 in Mexico (Queretaro)																	
											Out %		0%																					
	# of Machine NC Data Stations		13		NC Data Software		CAM, Power Mill, CNC Fagor, Electroerosion...		Total Mach NC Data Source		In %		90%		Business Experience Customer Name		Tier 1																	
											Out %		10%				Tier 2																	
	# of Simulation Stations		5		Simulation Software		Metrolog and M3.		Total Simulation Source		In %		100%				Other																	
											Out %		0%																					
Evaluation Summary					Avg.		4,4		Data Format used		Catia V5R19/24/27 Nx3-11		Company Expertise		Design and Engineering, Checking tools, Mock-up&prototypes, Rapid tooling manufacturing, and Machine vision.																			
<div>5-World class Tool Mfg. 4-Efficient Tool Mfg. 3-Efficient but some concerns. 2-Major concern. 1-Not recommended for business. 0-No response</div> <div><h3>Evaluation Summary</h3><p>Quality 4.4, Design 4.0, Development 4.0, Delivery 4.3, Management 4.1, Overall 4.4</p></div>					Data Transfer Method		FTP		Previous Experience		P13A Germany (Serial Control Device and CMM for Seats components: Belt fixation bracket, FR/RR back bracket, FSC ASM, Sidemember FSB ASM, tube RR/FR Bearing...) Serial Control Device and CMM for seats components, tube, sidemember ASM, cushion ASM, backframe ASM, tube and independent parts CMM gage: Cushion sea and metal structure for Johnson and Control.		Languages Supported		Good English, French and Spanish.																			
					Development					Equipment					#					Size					Avg. Age									
					Typical Part Type					Control device for metals, plastic and fabric components.					EDM Wire or Plunge					2					800x400					8				
					Avg Process Type & Process size					Mechanizing machine 2500x1200					NC Machining Center					13					2200x1200					7				
					Avg part size					1200*800					Number of Axis and spindle speed					35					3000-8000rpm					7				
					Delivery					Tool buyoff Process					Manual Milling Machine																			
					Avg. Tool Delivery time					Wks 9					Automated 2D Machine					2					1000x500					10				
					Avg. Design time					Wks 2,5					Grinder/Finish Machine																			
					Avg. M/C time					Wks 6,5					Gun Drill																			
					Avg. Develop time					Wks 2,5					Customer assistance onsite.					Spotline press					N/A									
																				Try out Press					N/A									
																				Blank/Straighten Equip.					N/A									
																				Automation Trial Equip.					N/A									
																				Other					N/A									

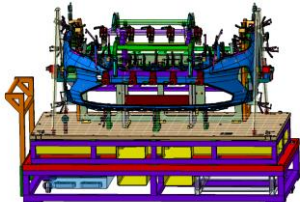
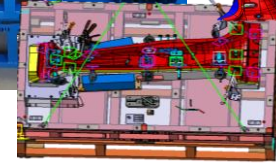
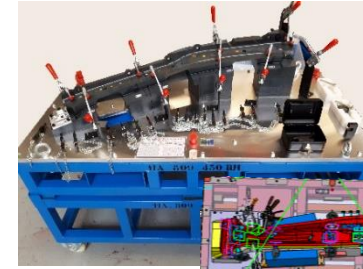
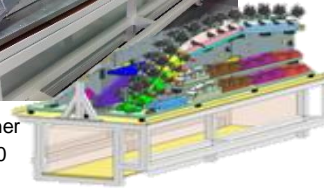
HIGH DIMENSIONS CHECKING FIXTURES



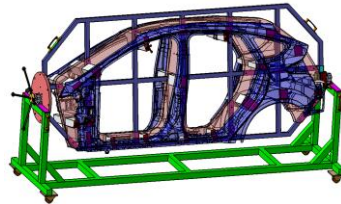
Cockpit
2500x1000



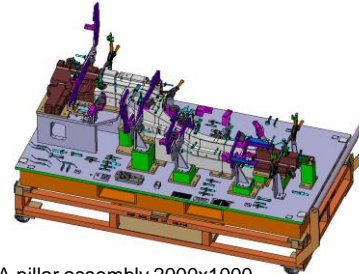
Roof finisher
2800x1000



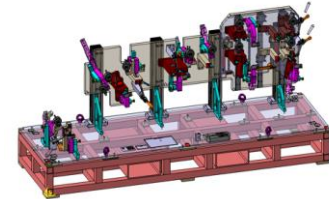
Front/Rear Bumper: 2500x1000



Lateral body 3400x1000

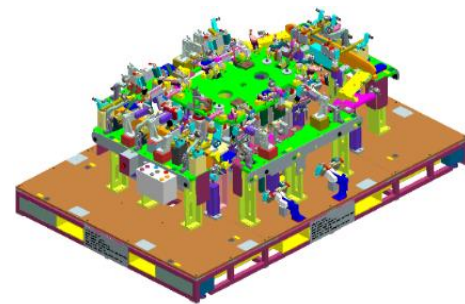
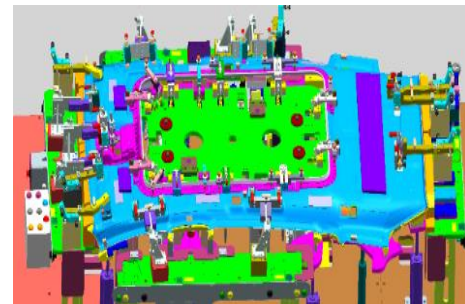
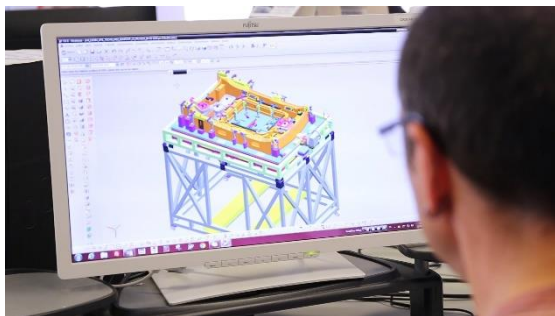


A pillar assembly 2000x1000



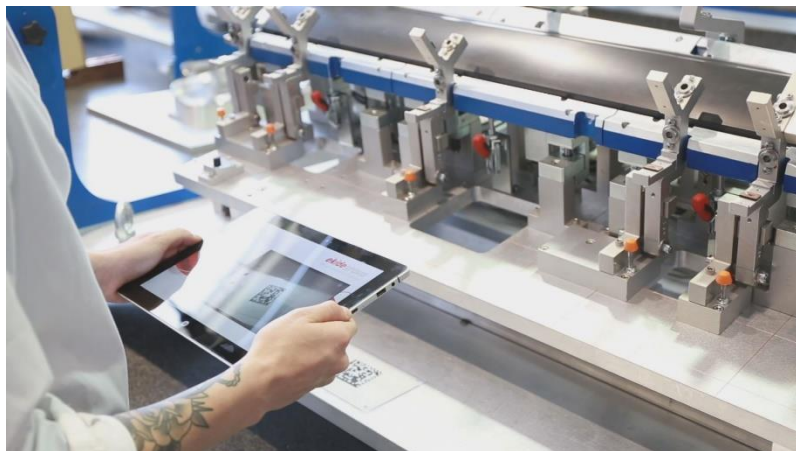
Frame structure 2500x1000

SEMI-AUTOMATIC CHECKING FIXTURES



Headliners 2500x2200

BLUETOOTH TRANSMISSION CHECKING FIXTURES



EKIMETER[®]
wireless



ADVANTAGES

- Up to 75% Gain time
- Pay-back from the development.
- Real and visual knowledge of the general status of the piece.
- Reliability of the measurements.
- No possible to cheat.
- Traceability of the part in case of defect in client / internal.
- Direct export to Excel and system eliminating the margin of human error of transmission.

DISADVANTAGES

- Small Initial investment
- Increases the thickness of the watch by 20mm.

MAIN CUSTOMERS





MACHINE VISION & ROBOTICS



DIMENSIONAL MEASUREMENT



ASSEMBLY POST

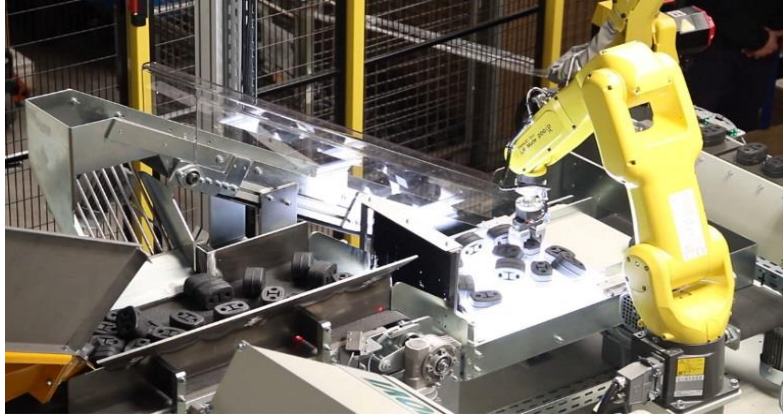


AESTHETIC ASPECTS INSPECION



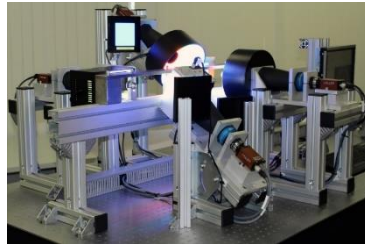
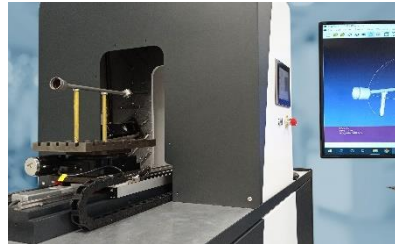
PICKING

CAPACITIES



Design and manufacturing, **integral solutions and control machines** through **Machine vision and Robotics**.

- Conception of the **solution** and 3D design.
- **Assembly, wiring and tuning phase**
- **Complete programming** and PC interfaces and automatisms.





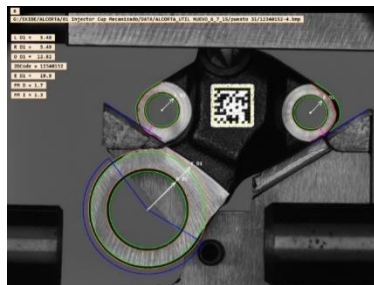
**MACHINE
LEARNING/
DEEP LEARNING**

**TRACEABILITY
4.0 industry**

Codes, numbers and letters,
or any other symbol.



2D VISION



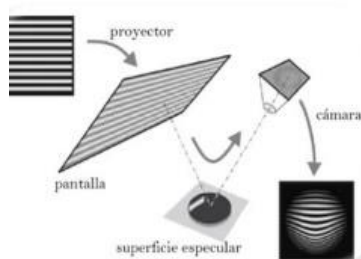
3D VISION



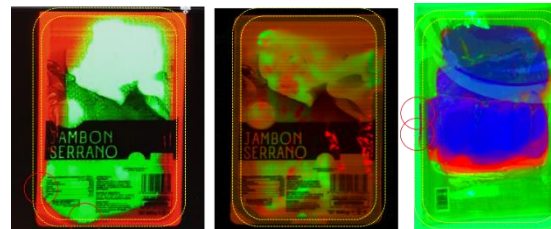
DEFLECTOMETRY



PHOTOMETRIC STERO



HYPERSPPECTRAL

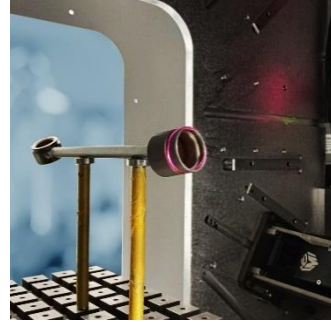


PRODUCTS



3D LINEAL

Reconstruction using linear advance scanning. Obtaining the real geometry of the part, for its comparative analysis against CAD.



3D ROTATIVE

Reconstruction for parts of revolution by rotating scan. Obtaining the real geometry of the part, for its comparative análisis against CAD.



PRODUCTS



PISTACHIOS CLASSIFIER

Separation of open pistachios from closed ones.

Further:

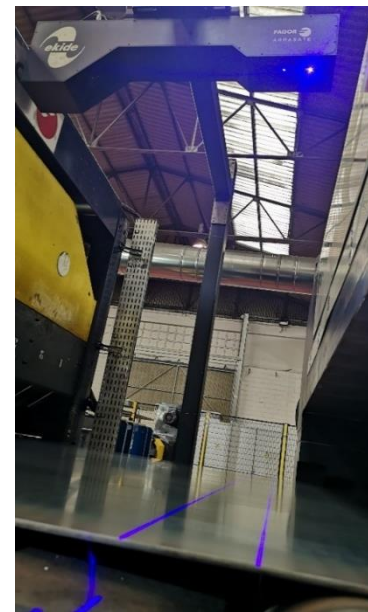
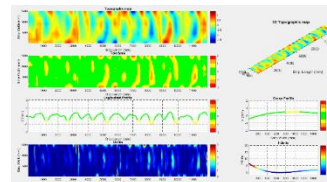
- Classification of pistachios by color.
- Classification of pistachios into full and empty.



FLATNESS METTER

Measurement of flatness by 3D triangulation of a flat surface in motion.

It is used in sheet metal roll flattening lines, correcting the closed loop flattening process.



PRODUCTS



VGR • VISION-GUIDED ROBOTICS

Through vision, objects are recognized and located; its position, orientation and dimensions are located in space; and give the robot the X, Y and Z coordinates and angles.

COLLABORATIVE
ROBOT
POSSIBILITY

BIN PICKING

Software to extract parts directly from a container or basket of bulk parts.



PALLETIZING / DEPALLETISING

Extraction or introduction of elements on a pallet. The Software determines the ideal extraction strategy..



PICKING

Apprehension of semi-ordered elements or spread out on a moving surface or conveyor belt.



MAIN CUSTOMERS



Ekide works in many sectors:
automotive, locksmith, logistics and food industry.



fagorederlandgroup



Get in touch with us & stay tuned



<https://www.ekide.es/>



EkideGroup



EkideGroup

***ekide*group**

We are committed to the solution